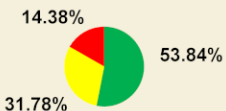
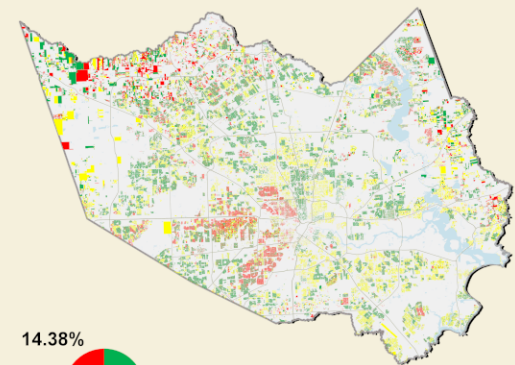
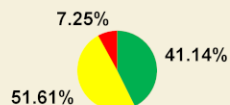
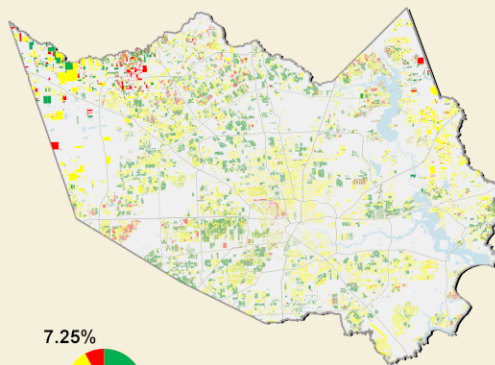


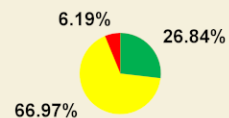
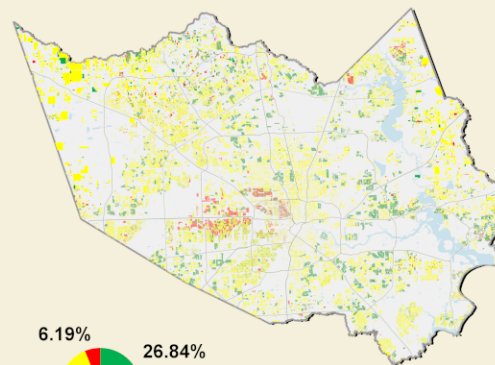
2009



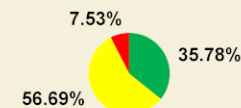
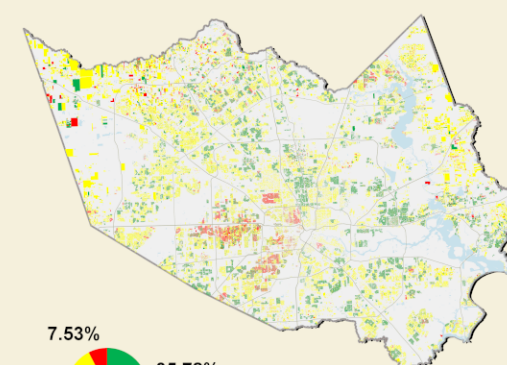
2010



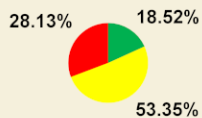
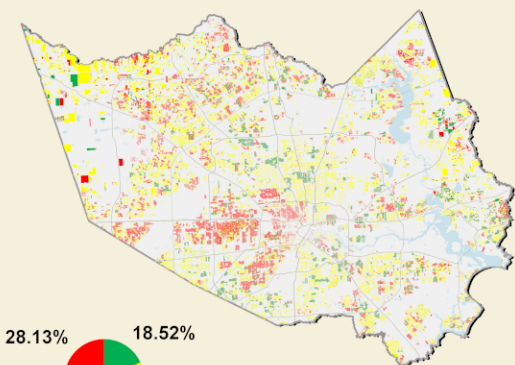
2011



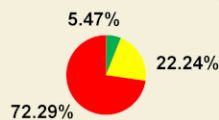
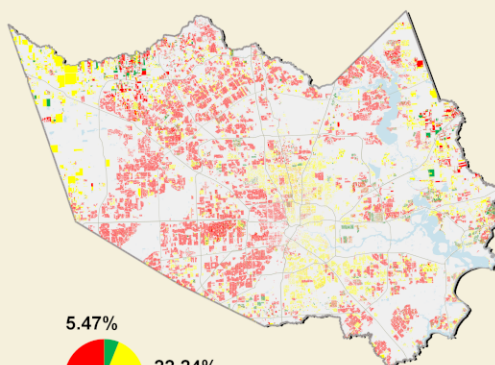
2012



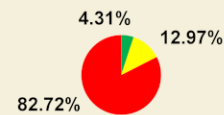
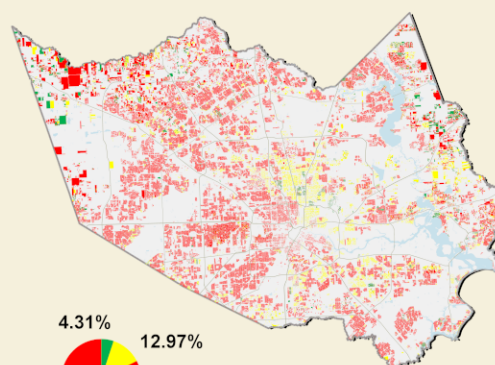
2013



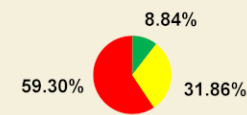
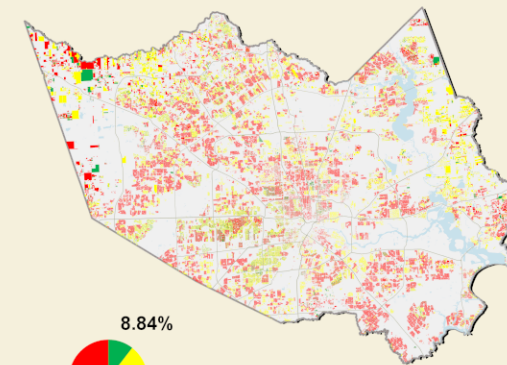
2014



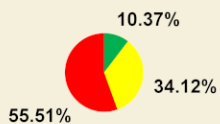
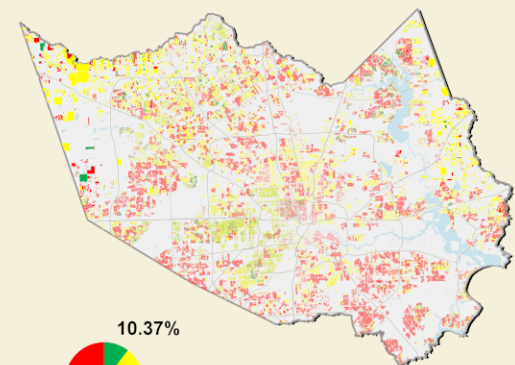
2015



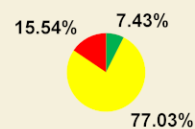
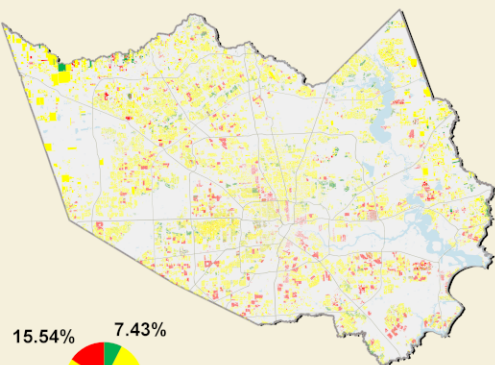
2016



2017



2018



Valuation Trends

Residential Market Value Changes
In Harris County - 2009 to 2018



Data as of June 12, 2018
2009 to 2017 Certified Market Values
2018 Noticed Values Subject to Change

- Decrease
- No Change
- Increase
- County
- Water
- Highway

Scale: Not To Scale / Plot Date: 6/26/2018

GIS User: tnguyen
Data Provider: A.O.D.

Harris County Appraisal District
13013 Northwest Fwy
Houston, TX 77040-6305

Geospatial or map data maintained by the Harris County Appraisal District is for informational purposes and may **not** have been prepared for or be suitable for legal, engineering, or surveying purposes. It does **not** represent an on-the-ground survey and only represents the approximate location of property boundaries.