



***HARRIS COUNTY
APPRAISAL DISTRICT
HARRIS COUNTY
HOUSTON, TEXAS***

2019 BUDGET

July 2018

RESOLUTION NO. 2018-01

**A RESOLUTION OF THE BOARD OF DIRECTORS OF THE HARRIS
COUNTY APPRAISAL DISTRICT APPROVING AND ADOPTING
THE 2019 BUDGET OF SAID DISTRICT**

* * * *

WHEREAS, pursuant to the provisions of the Texas Property Tax code, a proposed budget for the Harris County Appraisal District for the year 2019 has heretofore been prepared by the chief appraiser of the district and timely submitted by him to the Board of Directors of such district and to the governing bodies of each taxing unit within such district; and

WHEREAS, following timely notice in writing furnished to the presiding officer of the governing body of each such taxing unit and published in a newspaper of general circulation in Harris County, Texas, in accordance with Section 6.062 of the Texas Property Tax Code, the Board of Directors of said district did on the 18th day of July, 2018, conduct a public hearing on such proposed budget; and

WHEREAS, at such public hearing any and all persons desiring to be heard on any matter relating to said proposed budget were heard and their comments and suggestions were duly noted and considered by the Board of Directors of said district; and

WHEREAS, the Board of Directors of the district now deems it necessary and appropriate to formally approve and adopt at this time the 2019 budget of the Harris County Appraisal District; now, therefore

**BE IT RESOLVED BY THE BOARD OF DIRECTORS OF THE HARRIS COUNTY
APPRAISAL DISTRICT:**

Section 1. That the facts and recitations set forth in the preamble of this Resolution be, and they are hereby, found to be true and correct and that they be, and they are hereby, adopted, ratified, and confirmed.

Section 2. That the proposed budget for the Harris County Appraisal District for the year 2019 as heretofore submitted to and considered by the Board of Directors of such district and as heretofore modified or changed by such Board of Directors of such district during its deliberations on such budget following the public hearing thereon, in the total amount of \$88,094,531 will be paid to the district by the various taxing units participating in

the district according to their respective proportionate shares calculated pursuant to the formula established by Section 6.06(d) of the Texas Property Tax Code be, and it is hereby, approved and adopted as the official budget of said district for the year 2019.

Section 3. That the chief appraiser of the Harris County Appraisal District be, and he is hereby, authorized to make the interfund transfers between the general fund and the internal service fund as necessary for expenditures related to the group benefits fund.

Section 4. That the chief appraiser of the Harris County Appraisal District be, and he is hereby, authorized to transfer unencumbered balances from one budget account to another budget account during the 2019 fiscal year in amounts of \$25,000 or less. Amounts exceeding \$25,000 may be transferred under the following circumstances and conditions: A written request to effect such transfers exceeding \$25,000 shall be submitted by the chief appraiser to the Board of Directors. Such request shall identify the budget account from which it is proposed the transfer will be made, the budget account to which it is proposed the transfer will be made, and the need or justification for such transfer. Approval of such request by formal action of the Board of Directors must be obtained before the chief appraiser shall be authorized to make such transfer.

Section 5. That, for the purpose of authenticating the official 2019 budget of the Harris County Appraisal District adopted hereby, a copy of which is attached hereto and made a part hereof for all purposes, the chairman and secretary of the Board of Directors of said district be, and they are hereby, authorized and directed to affix their signatures on the cover of the original of such budget under the following certification which they shall cause to be placed thereon:

"This is to certify that this is the official 2019 budget of the Harris County Appraisal District approved and adopted by the Board of Directors of said district on July 18, 2018."

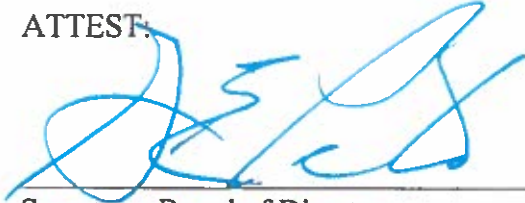
Section 6. That the chief appraiser of the district be, and he is hereby, authorized and directed to place or cause to be placed the official, authenticated original of said 2019 budget among the public records of the district and to make the same available for inspection in the office of the district by any person requesting that right and privilege.

PASSED, APPROVED, AND ADOPTED this the 18th day of July, 2018.



Chairman, Board of Directors
Harris County Appraisal District

ATTEST:



Secretary, Board of Directors
Harris County Appraisal District

(SEAL)



***HARRIS COUNTY
APPRAISAL DISTRICT***

2019 BUDGET

January 1, 2019 through December 31, 2019

**REVENUES & EXPENDITURES
FOR ALL DEPARTMENTS**

**Roland Altinger, Chief Appraiser
Houston, Texas
July 2018**

Contents

- 3 District Officials
Board of directors and chief appraiser
- 4 Plan of Organization
The departments and divisions of the district and the number of full time equivalent positions

FINANCIAL SECTION

- 6 2019 Budget
Expenditures for the general fund by line item account
- 8 Expenditure Summary & Method of Financing
Summarizes expenditures by account groups and an estimate of revenue used to finance the expenditures
- 9 Line Item Expenditures by Department
General fund expenditures by line item account for each of the district's 3 operating departments
- 11 2019 Budget with Comparisons
Comparison of the 2019 budget to the 2018 budget and 2017 actual expenditures by line item

TEXAS PROPERTY TAX CODE SECTION

- 14 Schedule of Positions
List of full time equivalent positions in alphabetical order; indicating the pay grade and number of positions for each position title
- 18 Schedule of Appraisal Review Board Members
Number of appraisal review board members eligible for payment
- 19 Salary Schedule and Provisions
Employee pay is determined by three salary schedules: Classified, Technical, and Director; list of line item positions; merit and quality service incentive salary increases; compensatory time; career development program; and, career ladder program

22 General Provisions

Provisions relating to mileage, expense allowances, commissioned security officers uniform cleaning, cell phone allowance, travel regulations, van pool subsidy, general counsel, and reappropriation of certain income

26 Employee Benefits Schedule

Provisions for employee benefits, including paid leave and vacation

29 Appraisal Review Board Provisions

Provisions relating to ARB Members and other appropriations

31 Capital Expenditures

List of capital items scheduled for acquisition

32 Estimated Cost Allocation to Taxing Units

List of taxing units allocated a portion of this budget and the estimated amount to be paid

DISTRICT OFFICIALS

Harris County Appraisal District Board of Directors 2018

PETE PAPE
Chairman

GLENN PETERS
Secretary

WANDA ADAMS
Assistant Secretary

ANN HARRIS-BENNETT
Ex-Officio Director

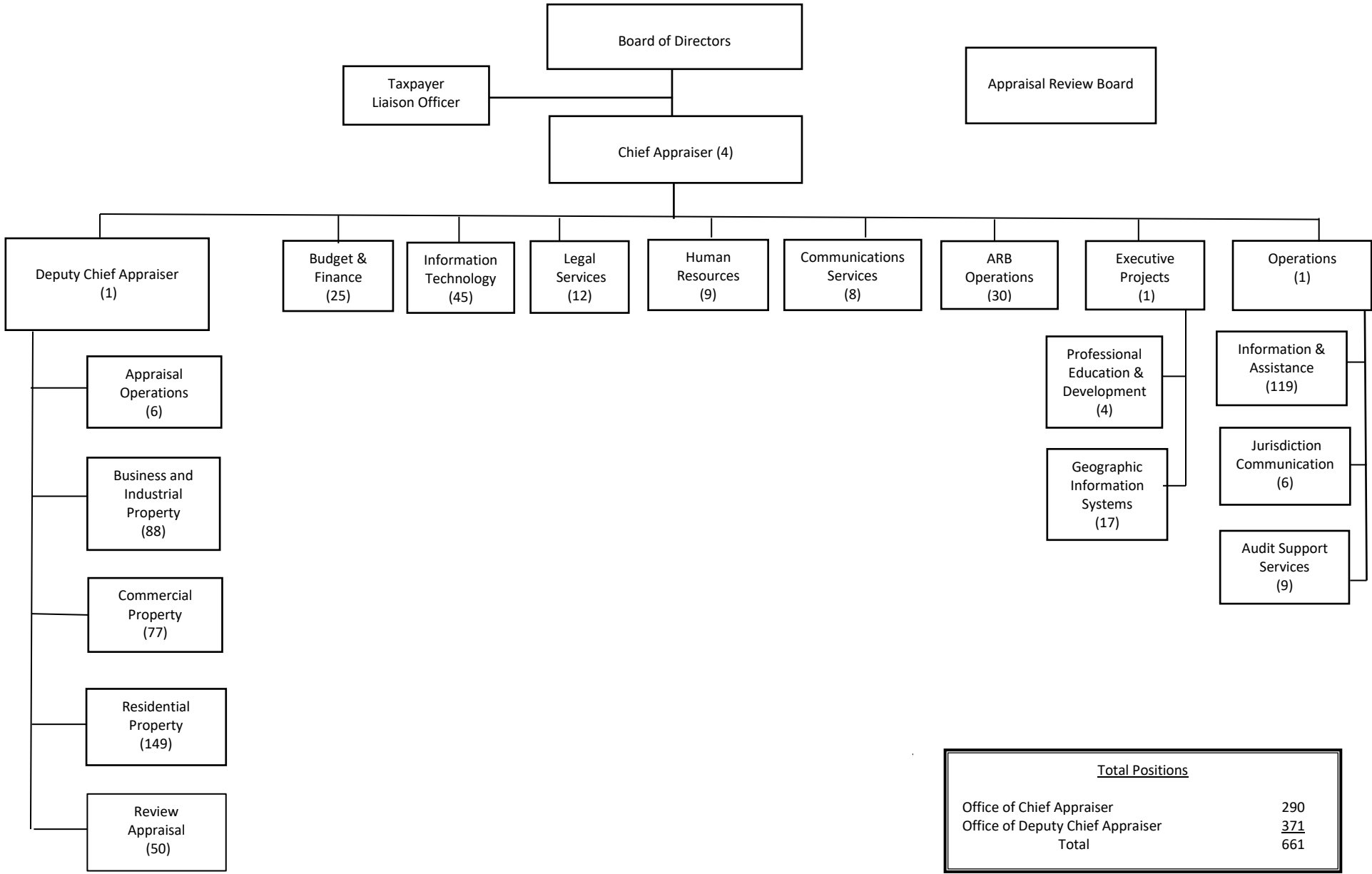
AL ODOM
Member

JIM ROBINSON
Member

MIKE SULLIVAN
Member

Roland Altinger
Chief Appraiser

PLAN OF ORGANIZATION - 2019



<u>Total Positions</u>	
Office of Chief Appraiser	290
Office of Deputy Chief Appraiser	<u>371</u>
Total	661

FINANCIAL SECTION

2019 Budget – General Fund

Expenditure Summary and Method of Financing

General Fund – Line Item Expenditures by Department

2019 Budget with Comparisons

2019 BUDGET
GENERAL FUND

Account Number	Account Name	2019 Budget
	Number of Positions	661.0
	Part-time & Seasonal FTEs	12.9
<u>SALARIES, WAGES & RELATED</u>		
	Salaries & Wages	\$ 38,590,316
	Allowance for Career Development	95,000
	Less Salary Lapse	(1,929,047)
	Allowance for Salary Adjustment	900,000
	Reserve for Longevity	395,939
	Reserve for COLA	0
	Allowance for Career Ladder	175,000
3010	Net Salaries & Wages	38,227,208
3011	ARB Board Members	2,781,000
3015	Contract & Seasonal Labor	0
3020	Shift Differential	16,000
3030	Overtime	644,510
3040	Part-time & Seasonal Wages	433,046
TOTAL SALARIES, WAGES & RELATED		42,101,764
<u>EMPLOYEE BENEFITS & RELATED</u>		
3501	Group Health Insurance	9,042,480
3503	Workers' Compensation Insurance	100,000
3504	Group Life & LTD Insurance	135,842
3505	Group Dental Insurance	230,821
3506	Group Vision Insurance	71,388
3507	Unemployment Insurance	229,770
3520	Retirement	6,109,263
3526	FICA Medicare	610,473
3527	Social Security	199,271
TOTAL EMPLOYEE BENEFITS & RELATED		16,729,308
<u>OFFICE & FIELD OPERATIONS</u>		
4001	Office Supplies	174,325
4003	Office Equipment Maintenance	909,524
4011	Telephone & Communication Service	281,284
4020	Copier Leases	94,000
4021	Copier Supplies & Maintenance	73,350
4030	Mapping Reproduction & Supplies	3,250
4040	Public Notice Advertising	18,000
4050	Security Services	174,000
4060	Field Travel, Vanpool & Other Exp	1,138,919
4070	Appraisal Supplies	13,610
4080	Vehicle Gasoline & Maintenance	34,000
4090	Records Storage & Supplies	2,205
4092	Records Conversion Services	0
4097	Employee Recognition Activities	35,000
4100	Postage, Mailing, & Handling Svcs.	2,000,000
4200	Professional Registration & Dues	79,170

2019 BUDGET
GENERAL FUND

Account Number	Account Name	2019 Budget
4202	Seminars & Other Tuition	314,458
4212	Education Travel & Expenses	195,725
4213	Books, Manuals & Publications	335,394
4501	Printing, Forms, & Stationery	54,400
4530	Paper, Copier & Printer	55,797
TOTAL OFFICE & FIELD OPERATIONS		5,986,411
 <u>COMPUTER OPERATIONS</u>		
5010	Computer Leasing	0
5020	CPU & Related Maintenance	144,979
5030	Other Computer Maintenance	12,623
5040	Computer Supplies	26,000
5050	Software Lease & Maintenance	1,833,477
5060	Teleprocessing Lines & Installation	18,000
TOTAL COMPUTER OPERATIONS		2,035,079
 <u>PROFESSIONAL SERVICES</u>		
5510	Financial Auditing	60,300
5520	Legal Services	10,983,967
5525	Arbitration Fees & Services	600,000
5526	State Office of Admin Hearings	5,000
5530	Appraisal Services	1,558,564
5550	Other Professional Services	1,591,375
5551	Mapping & Records Maintenance	1,509,600
TOTAL PROFESSIONAL SERVICES		16,308,806
 <u>OFFICE SPACE, UTILITIES & RELATED</u>		
6100	Office Space	2,692,620
6150	Utilities	502,000
6200	Building & Fixture Maintenance	1,520,043
6400	Casualty & Liability Insurance	143,500
TOTAL OFFICE SPACE, UTILITIES & RELATED		4,858,163
 <u>FIXED ASSETS PURCHASES</u>		
6501	Capital Purchases	75,000
TOTAL FIXED ASSETS PURCHASES		75,000
TOTAL BUDGET		88,094,531

EXPENDITURE SUMMARY AND METHOD OF FINANCING
2019 BUDGET

<u>BUDGETED EXPENDITURES</u>	2018 BUDGET	2019 BUDGET	Variance	% Change
<u>Account Groups</u>				
Number of Positions	661.0	661.0	0.0	0.00%
Part-time & Seasonal FTEs	21.8	12.9	(8.9)	-40.80%
Salaries, Wages & Related	41,643,558	42,101,764	458,206	1.10%
Employee Benefits	16,089,030	16,729,308	640,278	3.98%
Office & Field Operations	5,639,816	5,986,411	346,595	6.15%
Computer Operations	1,981,132	2,035,079	53,947	2.72%
Professional Services	15,472,497	16,308,806	836,309	5.41%
Office Space, Utilities & Maint.	4,686,054	4,858,163	172,109	3.67%
Capital Expenditures	50,000	75,000	25,000	50.00%
TOTAL BUDGET	85,562,087	88,094,531	2,532,444	2.96%
 <u>FINANCING METHOD</u>				
Jurisdiction Allocations	85,562,087	88,094,531	2,532,444	2.96%
Interest Income	0	0	0	0.00%
Other Income	0	0	0	0.00%
Application of Restricted Funds	0	0	0	0.00%
Application of Unrestricted Funds				
General Fund	0	0	0	0.00%
Internal Service Fund	0	0	0	0.00%
TOTAL FINANCING METHOD	85,562,087	88,094,531	2,532,444	2.96%

GENERAL FUND - LINE ITEM EXPENDITURES BY DEPARTMENT
2019 BUDGET

Account Number	Account Name	TOTAL BUDGET	BOARD OF DIRECTORS	OFC CHIEF APPRAISER	DEP CHIEF APPRAISER
	Number of Positions	661.0	0.0	341.0	320.0
	Part-time & Seasonal FTEs	12.9	0.0	10.6	2.3
<u>SALARIES, WAGES & RELATED</u>					
	Salaries & Wages	\$38,590,316	\$0	\$17,944,794	\$20,645,522
	Allowance for Career Development	95,000	0	95,000	0
	Less Salary Lapse	(1,929,047)	0	(897,021)	(1,032,026)
	Allowance for Salary Adjustment	900,000	0	900,000	0
	Reserve for Longevity	395,939	0	174,309	221,630
	Reserve for COLA	0	0	0	0
	Allowance for Career Ladder	175,000	0	175,000	0
3010	Net Salaries & Wages	38,227,208	0	18,392,082	19,835,126
3011	ARB Board Members	2,781,000	2,781,000	0	0
3020	Shift Differential	16,000	0	16,000	0
3030	Overtime	644,510	0	517,510	127,000
3040	Part-time & Seasonal Wages	433,046	30,000	280,346	122,700
TOTAL SALARIES, WAGES & RELATED		\$42,101,764	\$2,811,000	\$19,205,938	\$20,084,826
<u>EMPLOYEE BENEFITS & RELATED</u>					
3501	Group Health Insurance	9,042,480	0	3,980,880	5,061,600
3503	Workers' Compensation Insurance	100,000	0	100,000	0
3504	Group Life & LTD Insurance	135,842	0	65,975	69,867
3505	Group Dental Insurance	230,821	0	101,617	129,204
3506	Group Vision Insurance	71,388	0	31,428	39,960
3507	Unemployment Insurance	229,770	51,300	78,570	99,900
3520	Retirement	6,109,263	0	2,973,213	3,136,050
3526	FICA Medicare	610,473	40,760	278,484	291,229
3527	Social Security	199,271	174,282	17,382	7,607
TOTAL EMPLOYEE BENEFITS & RELATED		16,729,308	266,342	7,627,549	8,835,417
<u>OFFICE & FIELD OPERATIONS</u>					
4001	Office Supplies	174,325	1,000	116,025	57,300
4003	Office Equipment Maintenance	909,524	0	909,524	0
4011	Telephone & Communication Service	281,284	0	281,284	0
4020	Copier Leases	94,000	0	94,000	0
4021	Copier Supplies & Maintenance	73,350	0	73,350	0
4030	Mapping Reproduction & Supplies	3,250	0	3,250	0
4040	Public Notice Advertising	18,000	0	18,000	0
4050	Security Services	174,000	0	174,000	0
4060	Field Travel, Vanpool & Other Exp	1,138,919	3,000	107,430	1,028,489
4070	Appraisal Supplies	13,610	0	600	13,010
4080	Vehicle Gasoline & Maintenance	34,000	0	34,000	0
4090	Records Storage & Supplies	2,205	0	2,205	0
4092	Records Conversion Services	0	0	0	0
4097	Employee Recognition Activities	35,000	35,000	0	0
4100	Postage, Mailing, & Handling Svcs.	2,000,000	0	2,000,000	0
4200	Professional Registration & Dues	79,170	0	79,170	0
4202	Seminars & Other Tuition	314,458	16,000	251,644	46,814
4212	Education Travel & Expenses	195,725	3,800	123,765	68,160
4213	Books, Manuals & Publications	335,394	0	100,520	234,874
4501	Printing, Forms, & Stationery	54,400	0	54,400	0
4530	Paper, Copier & Printer	55,797	0	55,797	0
TOTAL OFFICE & FIELD OPERATIONS		5,986,411	58,800	4,478,964	1,448,647

GENERAL FUND - LINE ITEM EXPENDITURES BY DEPARTMENT
2019 BUDGET

Account Number	Account Name	TOTAL BUDGET	BOARD OF DIRECTORS	OFC CHIEF APPRAISER	DEP CHIEF APPRAISER
<u>COMPUTER OPERATIONS</u>					
5010	Computer Leasing	0	0	0	0
5020	CPU & Related Maintenance	144,979	0	144,979	0
5030	Other Computer Maintenance	12,623	0	12,623	0
5040	Computer Supplies	26,000	0	26,000	0
5050	Software Lease & Maintenance	1,833,477	0	1,833,477	0
5060	Teleprocessing Lines & Installation	18,000	0	18,000	0
TOTAL COMPUTER OPERATIONS		2,035,079	0	2,035,079	0
<u>PROFESSIONAL SERVICES</u>					
5510	Financial Auditing	60,300	0	60,300	0
5520	Legal Services	10,983,967	10,983,967	0	0
5525	Arbitration Fees & Services	600,000	600,000	0	0
5526	State Office of Admin Hearings	5,000	5,000	0	0
5530	Appraisal Services	1,558,564	0	0	1,558,564
5550	Other Professional Services	1,591,375	5,000	1,554,375	32,000
5551	Mapping & Records Maintenance	1,509,600	0	1,509,600	0
TOTAL PROFESSIONAL SERVICES		16,308,806	11,593,967	3,124,275	1,590,564
<u>OFFICE SPACE, UTILITIES & RELATED</u>					
6100	Office Space	2,692,620	0	2,692,620	0
6150	Utilities	502,000	0	502,000	0
6200	Building & Fixture Maintenance	1,520,043	0	1,520,043	0
6400	Casualty & Liability Insurance	143,500	0	143,500	0
TOTAL OFFICE SPACE, UTILITIES & RELATED		4,858,163	0	4,858,163	0
<u>FIXED ASSETS PURCHASES</u>					
6501	Capital Purchases	75,000	0	75,000	0
TOTAL FIXED ASSETS PURCHASES		75,000	0	75,000	0
TOTAL BUDGET		<u>\$88,094,531</u>	<u>14,730,109</u>	<u>\$41,404,968</u>	<u>\$31,959,454</u>

2019 BUDGET WITH COMPARISONS
2018 BUDGET & 2017 ACTUAL

Account Number	Account Name	2017 ACTUAL	2018 BUDGET	2019 BUDGET
	Number of Positions	650	661	661
	Part-time & Seasonal FTEs	15	21.8	13
<u>SALARIES, WAGES & RELATED</u>				
	Salaries & Wages	\$34,532,752	\$ 37,824,174	\$ 38,590,316
	Allowance for Career Development	\$0	95,000	95,000
	Less Salary Lapse	\$0	(1,890,751)	(1,929,047)
	Allowance for Salary Adjustment	\$0	900,000	900,000
	Reserve for Longevity	\$0	395,939	395,939
	Reserve for COLA	\$0	0	0
	Allowance for Career Ladder	\$0	175,000	175,000
3010	Net Salaries & Wages	\$34,532,752	\$ 37,499,362	\$ 38,227,208
3011	ARB Board Members	2,469,405	2,781,000	2,781,000
3015	Contract & Seasonal Labor	\$0	0	0
3020	Shift Differential	\$297,948	16,000	16,000
3030	Overtime	\$234,819	636,376	644,510
3040	Part-time & Seasonal Wages	\$535,718	710,820	433,046
TOTAL SALARIES, WAGES & RELATED		\$38,070,642	\$ 41,643,558	\$ 42,101,764
<u>EMPLOYEE BENEFITS & RELATED</u>				
3501	Group Health Insurance	7,339,801	8,542,764	9,042,480
3503	Workers' Compensation Insurance	105,000	100,000	100,000
3504	Group Life & LTD Insurance	141,059	100,320	135,842
3505	Group Dental Insurance	226,980	230,822	230,821
3506	Group Vision Insurance	70,200	71,388	71,388
3507	Unemployment Insurance	226,800	229,770	229,770
3520	Retirement	7,409,058	5,993,639	6,109,263
3526	FICA Medicare	534,065	603,834	610,473
3527	Social Security	159,997	216,493	199,271
TOTAL EMPLOYEE BENEFITS & RELATED		\$16,212,960	\$ 16,089,030	\$ 16,729,308
<u>OFFICE & FIELD OPERATIONS</u>				
4001	Office Supplies	113,292	169,108	174,325
4003	Office Equipment Maintenance	391,804	549,882	909,524
4011	Telephone & Communication Service	277,736	271,284	281,284
4020	Copier Leases	89,159	94,000	94,000
4021	Copier Supplies & Maintenance	64,071	89,350	73,350
4030	Mapping Reproduction & Supplies	3,661	3,250	3,250
4040	Public Notice Advertising	2,776	18,000	18,000
4050	Security Services	158,210	174,000	174,000
4060	Field Travel, Vanpool & Other Exp	967,938	1,125,206	1,138,919
4070	Appraisal Supplies	17,001	13,610	13,610
4080	Vehicle Gasoline & Maintenance	40,760	34,000	34,000
4090	Records Storage & Supplies	1,580	1,500	2,205
4092	Records Conversion Services	0	0	0
4097	Employee Recognition Activities	34,382	12,000	35,000
4100	Postage, Mailing, & Handling Svcs.	1,974,786	2,072,000	2,000,000
4200	Professional Registration & Dues	89,685	79,170	79,170
4202	Seminars & Other Tuition	215,150	293,489	314,458
4212	Education Travel & Expenses	111,116	169,625	195,725
4213	Books, Manuals & Publications	274,559	340,596	335,394
4501	Printing, Forms, & Stationery	48,907	60,000	54,400
4530	Paper, Copier & Printer	55,423	69,746	55,797
TOTAL OFFICE & FIELD OPERATIONS		\$4,931,996	\$ 5,639,816	\$ 5,986,411

2019 BUDGET WITH COMPARISONS
2018 BUDGET & 2017 ACTUAL

Account Number	Account Name	2017 ACTUAL	2018 BUDGET	2019 BUDGET
<u>COMPUTER OPERATIONS</u>				
5010	Computer Leasing	0	0	0
5020	CPU & Related Maintenance	89,542	124,000	144,979
5030	Other Computer Maintenance	7,021	11,000	12,623
5040	Computer Supplies	34,169	26,000	26,000
5050	Software Lease & Maintenance	1,320,274	1,789,132	1,833,477
5060	Teleprocessing Lines & Installation	0	31,000	18,000
TOTAL COMPUTER OPERATIONS		\$1,451,006	\$ 1,981,132	\$ 2,035,079
<u>PROFESSIONAL SERVICES</u>				
5510	Financial Auditing	42,997	60,300	60,300
5520	Legal Services	8,087,488	10,983,967	10,983,967
5525	Arbitration Fees & Services	681,050	300,000	600,000
5526	State Office of Admin Hearings	0	5,000	5,000
5530	Appraisal Services	1,474,123	1,506,295	1,558,564
5550	Other Professional Services	1,519,486	1,157,835	1,591,375
5551	Mapping & Records Maintenance	1,076,255	1,459,100	1,509,600
TOTAL PROFESSIONAL SERVICES		\$12,881,399	\$ 15,472,497	\$ 16,308,806
<u>OFFICE SPACE, UTILITIES & RELATED</u>				
6100	Office Space	2,426,713	2,427,904	2,692,620
6150	Utilities	381,308	590,000	502,000
6200	Building & Fixture Maintenance	1,253,005	1,524,650	1,520,043
6400	Casualty & Liability Insurance	129,944	143,500	143,500
TOTAL OFFICE SPACE, UTILITIES & RELATED		\$4,190,970	\$ 4,686,054	\$ 4,858,163
<u>FIXED ASSETS PURCHASES</u>				
6501	Capital Purchases	0	50,000	75,000
TOTAL FIXED ASSETS PURCHASES		\$0	\$ 50,000	\$ 75,000
TOTAL BUDGET		\$77,738,973	\$ 85,562,087	\$ 88,094,531

TEXAS PROPERTY TAX CODE SECTION

The following schedules are provided pursuant to Section 6.06(a) of the Texas Property Tax Code:

Schedule of Positions

Schedule of Appraisal Review Board Members

Salary Schedule and Provisions

General Provisions

Employee Benefits Schedule – General & Special Provisions

Appraisal Review Board Provisions

2019 Capital Expenditures

2019 Estimated Cost Allocation to Taxing Units

SCHEDULE OF APPRAISAL DISTRICT POSITIONS - 2019 BUDGET

Position	Salary Grade	Number of Positions
Account Resolution Manager	23	1
Accounting Specialist	16	2
Accounts Examiner	16	1
Accounts Examiner II	17	1
Admin Tech	8	42
Admin Tech 4	13	1
Administrative Assistant	15	5
Agent Section Coordinator	20	1
Appraisal Data Analyst	22	1
Appraisal Information Specialist	21	3
Appraisal Operations Specialist	23	1
Appraisal Support Technician	19	2
Appraiser I	15	47
Appraiser II	16	27
Appraiser III	17	57
Appraiser IV	18	26
ARB Executive Office Coordinator	18	1
Assistant Chief Financial Officer	26	1
Assistant CIO for Applications	27	1
Assistant CIO for Systems	27	1
Assistant Commercial Valuation Manager	22	1
Assistant Director, Information & Assistance	22	1
Assistant Field Manager	21	1
Assistant Manager, Review Appraisal	21	2
Assistant Network Administrator	21	1
Assistant Valuation Manager	21	1
Associate Chief Appraiser, Appraisal Operations	28	1
Associate Chief Appraiser, Business & Industrial	28	1
Associate Chief Appraiser, Commercial	28	1
Associate Chief Appraiser, Residential	28	1
Associate Chief Appraiser, Review Appraisal	28	1
Audio Visual Specialist	15	1
Benefits Administrator	20	1
Budget & Finance Manager	23	1
Business Systems Administrator	18	1
CAMA Applications Lead	25	1
CAMA Database Lead	25	1
Chief Appraiser	-	1
Chief Communications Officer	28	1
Chief Financial Officer	29	1
Chief Human Resources Officer	29	1
Chief Information Officer	29	1
Chief Legal Officer	29	1
Chief of Hearings	28	1
Chief of Operations	29	1
Chief, Executive Programs	28	1
Commercial Valuation Analyst	19	14
Commercial Valuation Manager	23	1
Commercial Valuation Supervisor	22	1

SCHEDULE OF APPRAISAL DISTRICT POSITIONS - 2019 BUDGET

Position	Salary Grade	Number of Positions
Communications Officer II	18	2
Communications Specialist I	15	1
Community Relations Representative	19	1
Compliance Manager	23	1
Counter Supervisor	20	1
Database Programmer I	17	2
Deputy Chief Appraiser	-	1
Document Control Specialist	15	2
Document Team Lead	21	1
Education & Development Manager	23	1
Engineer	21	2
Executive Assistant	19	1
Executive Project Advisor	25	1
Executive Projects Manager	27	1
Exemption Specialist	12	12
Field Manager	23	3
Fraud Examiner Investigator	19	1
Geographic Information Specialist	15	10
GIS Analyst	22	2
GIS Director	27	1
Hearings Specialist	10	7
Homestead Exemption Coordinator	20	1
HR Coordinator	16	1
HR Generalist	18	1
HRIS Administrator	20	1
Human Resources Manager	23	2
Industrial Manager	23	1
Information Security Analyst	25	1
Jurisdiction Coordinator	18	3
Jurisdiction Coordinator Supervisor	20	1
Legal Counsel	23	5
Manager, Arbitration & Administration	23	1
Mapping Supervisor	20	1
Network Service Technician	18	1
New Subdivision Coordinator	20	1
Payroll Specialist	19	2
Payroll Supervisor	22	1
PDDA Developer	22	1
Personal Property Manager	23	1
Processing Supervisor	22	1
Program Administrator	17	1
Program Data Design Analyst	22	11
Project Specialist	20	1
Public Information Technician	16	3
Purchaser	14	2
Purchasing & Facilities Manager	23	1
Records Management Officer	20	1
Records Management Specialist	11	2
Research Associate	18	8
Residential Valuation Specialist	20	1

SCHEDULE OF APPRAISAL DISTRICT POSITIONS - 2019 BUDGET

Position	Salary Grade	Number of Positions
Resolution Coordinator	20	1
Review Appraisal Manager	23	1
Review Appraiser	20	18
Security Manager	23	1
Security Officer	14	5
Security Officer Captain	16	1
Security Officer Lieutenant	16	1
Senior Accounting Specialist	17	1
Senior Accounts Examiner	20	1
Senior Admin Tech	11	28
Senior Commercial Valuation Analyst	21	11
Senior Director, ARB Operations	27	1
Senior Director, Audit Support	28	1
Senior Director, Information & Assistance	28	1
Senior Director, Jurisdiction Communications	28	1
Senior Exemption Specialist	15	6
Senior Financial Officer	27	1
Senior Geographic Information Specialist	18	1
Senior GIS Analyst	24	2
Senior Hearings Specialist	13	1
Senior Hearings Supervisor	16	1
Senior Internal Auditor	21	1
Senior Legal Counsel	25	1
Senior Paralegal	17	2
Senior Program Data Design Analyst	25	3
Senior Project Specialist	21	1
Senior Public Affairs Officer	20	1
Senior Recruiter	20	1
Senior Research Associate	20	3
Senior Review Appraiser	25	4
Senior Supervising Appraiser	20	8
Senior Support Specialist	13	1
Senior Support Supervisor	16	5
Senior Systems Design Analyst	27	1
Senior Systems Support Specialist	16	3
Senior Technical Assistance Specialist	14	20
Senior Telephone Information Specialist	14	2
Senior Valuation Analyst	20	16
Sharepoint Administrator	25	1
Sr Administrative Assistant	17	1
Supervising Appraiser	19	13
Supervising Examiner	22	1
Supervising Paralegal	21	1
Support Coordinator	15	1
Support Specialist	10	12
Systems Administrator	21	1
Systems Support Coordinator	20	1
Systems Support Specialist	14	3
Systems Support Supervisor	21	1
Systems Team Lead	25	1

SCHEDULE OF APPRAISAL DISTRICT POSITIONS - 2019 BUDGET

Position	Salary Grade	Number of Positions
Team Lead-CAMA	25	1
Team Lead-Development	25	1
Technical Assistance Specialist	11	29
Technical Program Specialist	16	6
Technical Writer	21	1
Telephone Center Coordinator	20	1
Telephone Information Specialist	11	19
Total Exemption Coordinator	20	1
Training & Development Coordinator	15	1
Training & Development Specialist	20	1
Valuation Analyst	18	22
Valuation Manager	23	2
Valuation Supervisor	22	3
Visiflow & CAMA Technician	17	1
	<hr/>	<hr/>
	163	661

SCHEDULE OF APPRAISAL REVIEW BOARD MEMBERS
2019 BUDGET

<u>Position</u>	<u>Salary Group</u>	<u>Number of Positions</u>
ARB Member	per diem	190
TOTAL		<u>190</u>

2019 SALARY SCHEDULE AND PROVISIONS

A. Classified Positions Salary Schedule.

<i>Grade</i>	<i>Minimum</i>	<i>Midpoint</i>	<i>Maximum</i>
8	\$25,712	\$33,765	\$41,818
9	\$27,512	\$36,129	\$44,745
10	\$29,438	\$38,658	\$47,877
11	\$31,498	\$41,364	\$51,229
12	\$33,703	\$44,259	\$54,815
13	\$36,062	\$47,357	\$58,652
14	\$38,587	\$50,672	\$62,758
15	\$41,288	\$54,219	\$67,151
16	\$44,178	\$58,015	\$71,851
17	\$47,270	\$62,076	\$76,881
18	\$50,579	\$66,421	\$82,262
19	\$54,120	\$71,070	\$88,021
20	\$57,908	\$76,045	\$94,182
21	\$61,962	\$81,368	\$100,775
22	\$66,299	\$87,064	\$107,829
23	\$70,940	\$93,159	\$115,377
24	\$75,906	\$99,680	\$123,454
25	\$81,219	\$106,657	\$132,095
26	\$86,905	\$114,123	\$141,342
27	\$92,988	\$122,112	\$151,236
28	\$99,497	\$130,660	\$161,822
29	\$106,462	\$139,806	\$173,150
30	\$113,914	\$149,593	\$185,271

B. Schedule of Positions Outside the Classification Schedule.

Chief Appraiser	\$246,750
Deputy Chief Appraiser	\$189,000

C. It is expressly provided that the chief appraiser is authorized to grant merit salary increases to district employees. Such merit increases shall be subject to the following:

1. The maximum merit salary increase for an employee may not exceed 6%.
2. The maximum limit shall not exceed the amount specifically budgeted as "Allowance for Salary Adjustments".
3. For an employee to be eligible for a merit salary increase, the following criteria must be met:
 - (i) the employee must have been employed by the district for at least six continuous months prior to the award;
 - (ii) at least six months must have elapsed since the employee's last promotion;

- (iii) the employee's job performance and productivity must be consistently above that normally expected or required as evidenced by performance evaluation; and,
 - (iv) an employee may not receive more than one merit salary increase in a single fiscal year.
- D. The chief appraiser is authorized to award quality service incentive salary increases, disbursed as a single payment, to employees under the following conditions:
 - 1. The employee must have been employed by the district in a full-time position for at least 6 continuous months and must not have received a promotion or merit salary increase for a minimum of 6 months prior to the award;
 - 2. The employee's high level of performance must be documented by the performance evaluation system;
 - 3. The lump sum award may be no more than 5% of the employee's annual base rate of pay;
 - 4. Six months must have elapsed since the employee's last quality salary increase;
 - 5. Funding for such increases will be made only from the overall limits specified under Paragraph C, above; and,
 - 6. A quality salary increase is a one-time payment and does not increase the salary level for the following year.
- E. The chief appraiser is authorized to award a quality service incentive salary increase and a merit salary increase concurrently. The combined award may not exceed 7% of the employee's annual base rate of pay.
- F. The chief appraiser may authorize salary adjustments. A non-merit related salary adjustment may be warranted when there are changes to an employee's duties and responsibilities, whether such changes result in title change, or not (e.g. needs arising from resignations, retirements, restructuring), promotion/progression, to address pay equity, or in response to market conditions.
- G. The chief appraiser may substitute other classified position titles for those listed in this Schedule of Positions when the chief appraiser finds that such reclassifications are necessary for effective performance of the district's responsibilities. The chief appraiser is further authorized to reassign an employee serving in a classified position to another classified position or to move the employee to another salary within the employee's salary grade as necessary to maintain desirable salary relationships:
 - 1. between and among employees of the district; or
 - 2. between employees of the district and employees who hold similar positions in the relevant labor market;

- 3. to retain staff essential to the district’s succession plans; or,
 - 4. to establish a 90-day dual incumbency for a position for the purpose of knowledge transfer prior to resignation or retirement of one of the incumbents.
- H. Career Development Program. The chief appraiser is authorized to award achievement pay according to the district’s policy under the Career Development Program.
- I. TDLR Career Ladder Program. The chief appraiser is authorized to promote staff upon reaching levels I, II, III and IV Property Tax Professional Appraiser designations with the Texas Department of Licensing and Regulation (TDLR) and satisfaction of such other requirements as the chief appraiser may impose. The schedule below (career ladder) is the authorized salary increase or promotion upon reaching these TDLR milestones. The minimum months in designation varies dependent on TDLR rules. A promotion to the next pay grade under this plan must result in a salary increase of not less than 3%. This schedule does not preclude a promotion to a higher pay grade if the staff member is otherwise qualified for a currently open position requiring TDLR registration. Promotions under these TDLR milestones are made within the current occupied budgeted position and the salary differential is funded through salary lapse.

Position Title or Equivalent	TDLR Designation	Minimum Months in Position & Designation	Pay Grade for Position
Appraiser I	Level I	6	15
Appraiser I	Level II	6	15
Appraiser II	Level III	12	16
Appraiser III	Level IV RPA		17

- J. The chief appraiser is authorized to pay a full-time employee who is a state approved instructor a stipend of \$500 if the employee teaches two or more state certification courses during a calendar year.
- K. The chief appraiser is authorized to pay salaried exempt employees straight time for compensatory time worked during periods when paid leave is restricted or when the chief appraiser finds it essential for effective performance of critical functions.
- L. The chief appraiser is authorized to pay vacation or compensatory leave hours or both, in excess of the maximum hours that carry over to the next year, limited to unspent budgeted funds.
- M. The chief appraiser is authorized to pay a full-time employee a stipend of up to \$500 for translation services per calendar year to ensure quality services to the limited english proficient populations.

GENERAL PROVISIONS

A. Mileage Allowance.

1. Use of Privately Owned Vehicles. Employees, board members, or persons assigned to the district by another agency under contract who use their privately owned vehicles on official district business are authorized reimbursement at the rate authorized by the Internal Revenue Service as the standard mileage deduction rate (currently \$0.545/mile for 2018).
 - a. Phase Out of Mileage and Expense Allowances. The chief appraiser is authorized to develop a schedule for phasing out mileage and expense allowances as appropriate to reflect the district's increasing reliance on photographic reinspection of property. As appropriate under that schedule, the chief appraiser may increase the salary of an employee or position that receives an allowance to offset the phased reduction.
2. Monthly Vehicle Allowance. The chief appraiser is authorized to pay a monthly vehicle allowance for appraisal positions whose job responsibilities require that they spend the majority of their time outside the district headquarters in an amount not to exceed \$450 per month. Division directors shall annually prepare a list of the employees and position numbers for which the monthly allowance is authorized. The total amount paid under this provision may not exceed the amount allocated in this budget for that purpose.
3. Idling Allowance. Appraisers performing as group leaders, or who are assigned to pre-review, review and quality control functions are authorized an "idling allowance" of \$1.00 per hour in addition to reimbursement for actual mileage as provided in the district's appraisal manual.
4. Audit Support Services. Employees assigned to the Audit Support Services Division who engage in investigations or field audits may be entitled to a vehicle allowance not to exceed \$450 per month for official use of their personal vehicles.
5. Reimbursement at Standard Mileage Rate. If the monthly vehicle allowance is insufficient to reimburse a designated employee for miles actually driven in the conduct of district business, that employee's reimbursement for the period will be calculated at the standard mileage rate.
6. Other Provisions. An employee who is transferred from a position that is authorized a vehicle allowance may be transferred at a higher salary step to offset the loss of a vehicle allowance. If an employee who is authorized a vehicle allowance uses a district owned vehicle on any day, the vehicle allowance is prorated by the number of days the district owned vehicle is used whether part of a day or a whole day.

- B. Expense Allowance. The following listed positions are authorized an expense allowance in lieu of a vehicle allowance, in-district mileage, and incidental in-district expenses at the monthly rate indicated:

Chief Appraiser	\$850
Deputy Chief Appraiser	\$550

- C. Uniform Cleaning Reimbursement. Commissioned security officers who are required to regularly wear district-provided uniforms are entitled to reimbursement for the actual cost of professional uniform cleaning in an amount not to exceed \$45.00 per month.
- D. Cell Phone Allowance. In lieu of providing a district-owned cellular phone to an employee whose duties require it, the chief appraiser is authorized to pay a monthly cellular phone allowance as follows: \$10 to \$45 per month, depending on the number of minutes of business use projected, for basic cellular service, and an additional \$50 per month for data services if the chief appraiser determines that data services are appropriate. An employee who receives a cellular phone allowance under this provision must, at his or her own expense, obtain equipment and cellular services meeting minimum specifications that are approved by the chief appraiser or his designee. The equipment and service must be in working order at all times during the period for which an allowance is paid. The total amount paid under this provision may not exceed the amount allocated in this budget for cellular phone and data services.

E. Travel Expenses.

1. Non-overnight Travel.

- a. The chief appraiser, a member of the board of directors, a district employee, or a person assigned to the district by another agency under contract who has been designated to represent the chief appraiser or a board member, or a district employee who is traveling with the chief appraiser or a board member may receive reimbursement of actual expenses for meals when traveling outside the district's boundaries. The meal receipts must be attached to the travel expense report if the amount claimed for a meal exceeds \$11.00.
- b. Other employees may be reimbursed for meal expenses incurred on a day the employee conducts official business outside the district's boundaries for no fewer than six consecutive hours on the day the expenses are incurred in an amount not to exceed \$51 per day. However, the maximum reimbursement for breakfast may not exceed \$11.00, exceed \$12 for lunch, or exceed \$23 for dinner. Meal receipts must be attached to the travel expense report if the amount claimed for a meal exceeds \$11.00.

2. Overnight Travel.

- a. The chief appraiser, a member of the board of directors, a district employee, or a district employee who is traveling with the chief appraiser or a board member may receive reimbursement for actual expenses for meals, lodging, and incidental expenses authorized by this section. In lieu of claiming actual expenses, a person may elect to be reimbursed in the manner provided for in subsection 2.b. of this section.

- b. Employees and members of the board of directors who elect to do so, may be reimbursed for actual expenses of lodging at a commercial lodging establishment and an allowance for meals in an amount not to exceed the maximum per diem allowance authorized for that locality in the current federal travel regulations unless the chief appraiser determines, in advance of the travel, that local conditions necessitate a change in the lodging rate for a particular location. An employee may reduce the maximum meal reimbursement rate for a locality and use the reduction to increase the maximum lodging reimbursement rate for the locality, and may also be reimbursed for authorized incidental expenses. In calculating the applicable meal allowance for a particular locality, the amounts allowed for the first and last day of travel are reduced to 50% of the daily federal rate if the person begins travel after 1 p.m. on the first day or returns and ends travel before 1 p.m. on the last day.
 - c. A person authorized to be reimbursed for overnight travel expenses may receive reimbursement for the person's actual expenses for meals and lodging when traveling outside the continental United States.
 - d. Persons who are authorized to claim actual expenses and elect to do so must provide lodging and meal receipts with their travel expense report. An employee who claims expenses on a per diem basis must submit lodging receipts with the travel expense report.
 - e. Allowable incidental expenses include taxes levied on lodging, taxi fare, airport limousine service, airport or other parking charges, and business-related telephone calls and/or reasonable internet connection charges. Receipts for incidental expenses must be attached to the travel expense report.
3. Transportation Expenses.
- a. Employees and board members who travel outside the district by personal auto will be reimbursed for mileage at the same rate used for in-district mileage. Travel must be by the most direct route. If two or more employees are attending the same business function, they should travel together if possible to minimize mileage expense. A person's total mileage reimbursement for a trip may not exceed the cost of round trip air travel by coach or economy class. The chief appraiser may require an employee traveling outside the district to use a district-owned vehicle instead of the employee's personal vehicle or other form of conveyance.
 - b. Persons who travel by air must fly coach or economy class. All flight arrangements should be made through the district's travel coordinator in the Office of Chief Appraiser.
4. Purchase of Alcoholic Beverages Prohibited. A person who travels on official business may not claim reimbursement from district funds for the purchase of alcoholic beverages.

5. Completion of Travel Expense Reports. After completion of authorized out-of-district travel, the person may not be reimbursed for travel expenses until the person submits a written travel report on the form prescribed by the chief appraiser. The form must clearly outline the official purpose of the travel and summarize, on a daily basis, the duties performed and expenses incurred or per diem claimed.

- F. Reappropriations. Monies received by the district as payment for copying charges are reappropriated to the district to offset the cost of making such copies. Monies received by the district under a Grant or Interlocal Contract are appropriated to the district to pay the cost of conducting the activity or activities authorized by such Grant or Contract. To the extent penalties may be imposed under any section of the Tax Code, penalty monies actually received are reappropriated to the district to offset the cost of operations, less any amounts required by law to be remitted to the appropriate taxing units.

- G. Vanpool Subsidy. The district is a member of the METRO STAR Vanpool program. Employees who participate are authorized a monthly subsidy of \$35.00. Participation is limited to an appropriation of \$42,000.

- H. Employee Recognition Activities. There is appropriated the sum of \$35,000 to be used for service awards and other employee recognition activities as approved by the board of directors.

- I. General Counsel. Pursuant to §6.05(j), Property Tax Code, the board may employ a general counsel to the district to serve at the will of the board. The general counsel shall provide counsel directly to the board and perform other duties and responsibilities as determined by the board. The general counsel is entitled to compensation as authorized by the board and funds are provided in Account 5520 - Legal Services.

EMPLOYEE BENEFITS SCHEDULE
GENERAL & SPECIAL PROVISIONS

- A. Health, Dental and Vision Benefits. The district provides health, dental and vision benefits for all full time regular employees. New employees are covered on the first day of the month following a 30-day waiting period. Under the district's Flexible Benefits Plan, employees may select from a variety of coverage, but must select basic health coverage. The cost of coverage selections under the plan, which exceeds the provided allowance, is borne by the employee. The board of directors determines the amount of the allowance for employees and retirees when health, dental and vision contracts are renewed near the end of the year. Eligible retirees may continue coverage under the district's health plan until age 65 or eligible for Medicare. Retirees eligible for Medicare may enroll in a Medicare Supplement Plan offered by the Texas Association of Counties.
- B. Life and Disability Insurance. The district also provides life and disability insurance to all full time regular employees. The cost of life and disability insurance for the employee is paid by the district. Employees may purchase additional life, accidental death and AFLAC insurance for themselves and their dependents under the Flexible Benefits Plan. Retirees are not eligible for coverage under the life and disability plans.
- C. Texas County & District Retirement System (TCDRS). This budget provides funding for the employee retirement plan. The employee contribution rate is 7% of salary and the district contribution rate is composed of a TCDRS actuarial determination plus an amount for an annuitant COLA if authorized by the board of directors, and the supplemental death benefit component. The TCDRS Supplemental Death Benefits Fund provides for a lump-sum death benefit payment to the beneficiary of a deceased employee-member equal to a year's salary in addition to a return of the deceased's personal deposits and interest earnings or a Deferred Service Retirement pension benefit. Upon the death of a retired member, the beneficiary is provided a lump-sum payment equal to \$5,000.
- D. Workers' Compensation Insurance. All full time regular and part-time employees, and members of the board of directors and appraisal review board are protected with workers' compensation insurance. This budget provides coverage through participation in the Texas Municipal League Intergovernmental Risk Pool.
- E. Unemployment Insurance. The district provides unemployment insurance for all district employees.
- F. Social Security. District employees do not participate in the federal Old Age, Survivors, and Disability Insurance (OASDI) program. Part-time employees who are not members of the Texas County & District Retirement System are required to contribute to Social Security. This budget provides for the employer's matching amount.
- G. Federal Medicare Coverage. Most district employees participate in the Medicare portion of the Federal Insurance Contribution Act (Social Security). Employees contribute to this program at a rate of 1.45% of wages paid. Funding is provided in this budget for the employer's matching amount.

- H. Longevity Pay. All full time regular employees, beginning with the first pay period after their first year of service with the district, are entitled to longevity pay calculated on the basis of \$5.00 per month per year of service, not to exceed \$150.00 per month. Employees returning to employment with the district after a break in service of less than five years are not entitled to longevity pay until after completing one year of continuous service. After the one-year waiting period, the employee's prior service of whole years is included in the calculation of longevity pay.
- I. Sick Leave. All full time regular employees are entitled to sick leave subject to the following conditions:
1. An employee will earn sick leave entitlement beginning with the first day of employment with the district and ending on the last day of duty. Sick leave entitlement shall be earned at the rate of 3.6920 hours per regular pay period, not to exceed 12 days per year, and shall accumulate with the unused amount of such leave carried forward each pay period. Unpaid time does not earn sick leave.
 2. Sick leave may be taken any time after accrual, subject to the terms set forth in the district's sick leave policy.
 3. An employee who resigns, is dismissed, or separated from district employment may not be paid for unused sick leave, but the estate of a district employee who dies while employed by the district shall be paid one-half of the employee's unused sick leave, or for 80 hours of sick leave, whichever is less.
- J. Employee Vacations. All full time regular employees are entitled to vacation leave. Such entitlement is calculated on 26 pay periods per year in accordance with the following schedule:

<u>Years of District Service</u>	<u>Hours Earned Per Pay Period</u>	<u>Maximum Hours That Carry Over To Next Year</u>
First 2 years	3.23	168
2 to under 5 years	3.69	288
5 to under 10 years	4.15	324
10 to under 15 years	4.61	360
15 to under 20 years	5.53	432
20 to under 25 years	6.46	504
25 to under 30 years	7.38	576
30 or more years	8.30	647

Vacation with pay may not be granted until the employee has had continuous employment with the district for six months, although credit will be earned during that period. The chief appraiser may authorize additional unpaid vacation leave as a supplement to vacation with pay. An employee who resigns, is dismissed, or separated from district employment is entitled to be paid for all vacation time duly accrued at the time of separation, provided the employee has had continuous employment with the district for six months. For an employee who has a break in service, total HCAD employment is calculated in the same manner as with longevity pay. After a one-year waiting period, the employee's prior service of whole years is included in the calculation of vacation hours.

- K. Emergency Leave. The chief appraiser may grant emergency leave of up to three working days to a full time regular employee because of a death of the employee's spouse, parent, step-parent, child, step-child, brother, sister, grandparent, grandchild, spouse's parent, or spouse's children. The chief appraiser may grant leave for any other purpose that justifies emergency leave.
- L. Other Paid Leaves. Full time regular employees of the district are entitled to paid leaves for holidays, military duty, and jury duty in accordance with the district's policy on such leaves.

APPRAISAL REVIEW BOARD PROVISIONS

The Appraisal Review Board of Harris County (ARB) is authorized by Section 6.41 of the Texas Property Tax Code as an entity separate from the Harris County Appraisal District. The Code contains provisions about the separation of the two entities, and requires the board of directors to fund certain activities of the appraisal review board. ARB members are not employees of the district and are not eligible for appointment to the ARB if ever employed by the district. Other restrictions apply.

A. Appraisal Review Board Member Per Diem and Duties and Per Diem of ARB Officers.

1. ARB members are compensated at a flat per diem rate for each full day or half day of service on the appraisal review board that equals or exceeds eight hours, exclusive of lunch. A full day is defined as greater than four hours, exclusive of lunch. A half day is defined as less than four hours, exclusive of lunch. ARB members attending ARB meetings will receive half day per diem. ALG "ARB Leadership Group" team leaders will receive an additional \$49.50 per month for meeting attendance. The per diem rate for such members shall be paid as follows:

Years of Board Service	Full Day Per Diem	Half Day Per Diem
1st or 2nd Year	\$167 per full day	\$84 per half day
3rd or 4th Year	\$185 per full day	\$93 per half day
5 th Year or more	\$204 per full day	\$102 per half day

The board of directors may provide a per diem of up to \$211 per full day for the chairman of the ARB. Service shall mean sitting as a member of a panel, participating at a meeting of the full board, or attending training required by law or approved by the board of directors. The board of directors may provide that service for an officer or member of the ARB includes such other activities as the board may prescribe. The chairman of the appraisal review board determines panel and training schedules for ARB members in consultation with the ARB administrator.

2. A member must serve more than four hours, exclusive of lunch, and be discharged for the day by ARB Support personnel or by the ARB Executive office to receive the full day per diem. It is anticipated that members will serve the time required to properly discharge their obligations. For service of four hours or less, a member shall receive the half day per diem. Regardless of the number of hours served in excess of eight in a 24-hour period, a member will not be compensated at more than the full day per diem rate specified above.

B. Appropriation for ARB Member Per Diem and Related Items

1. Appropriation for ARB member per diem compensation is \$2,781,000.
2. Appropriation for ARB member coverage for Unemployment Insurance is \$51,300.
3. Appropriation for the matching portion of OASDI and FICA, is \$215,042.

- C. Appropriation for Appraisal Review Board Attorney. The Appraisal Review Board shall use the services of the county attorney for legal counsel. In the event the county attorney is unable or declines to represent the board in a lawsuit to which the board is made a party, the board may employ and compensate private counsel, subject to a total appropriation of \$5,000.
- D. Appropriation for Clerical Assistance. The appraisal office provides clerical assistance to the appraisal review board, including assisting the board with the scheduling and arranging of hearings. The appropriation for clerical assistance appears elsewhere in this budget.
- E. Appropriation for Texas Comptroller ARB Training. The Property Tax Code provides for the Texas State Comptroller to provide mandatory training of ARB members. The amount of \$12,500 is appropriated for that purpose.
- F. Appropriation for TALCB Licensed Appraiser Instruction. The ARB may contract with a Texas Appraiser Licensing and Certification Board (TALCB) licensed appraiser to instruct the members of the appraisal review board on valuation methodology if an appropriation for the instruction is provided. The amount of \$3,500 is appropriated for that purpose.
- G. A member of the board of directors, the chief appraiser, or any other employee of the district may not communicate with a member of the appraisal review board about a course provided by the Comptroller or any other matter presented or discussed in training. In addition, the Property Tax Code prohibits communication with the appraisal review board by an officer or employee of a taxing unit or by an attorney who represents or whose law firm represents the appraisal district or a taxing unit that participates in the appraisal district.

2019 CAPITAL EXPENDITURES

ORG	ACCT	ITEM	QTY	NEW (N) REPL (R)	UNIT COST	TOTAL COST
8006	6501	Server Blades	6	N	12,500	75,000
						<u>\$75,000</u>

2019 ESTIMATED COST ALLOCATION TO TAXING UNITS

The Harris County Appraisal District is funded by the taxing units it serves. As provided in Section 6.06(d), Tax Code, "(E)ach taxing unit participating in the district is allocated a portion of the budget equal to the proportion that the total dollar amount of property taxes imposed in the district by the unit for the tax year in which the budget proposal is prepared bears to the sum of the total dollar amount of property taxes imposed in the district by each participating unit for that year."

Section 6.06(d), Tax Code, requires "(E)ach taxing unit shall pay its allocation in four equal payments to be made at the end of each calendar quarter, and the first payment shall be made before January 1 of the year in which the budget takes effect." It has been the practice of the Harris County Appraisal District to invoice the taxing units for their quarterly payments approximately 45 days prior to the due date. Since the first quarter billing for 2019 will be prepared and delivered on or about November 15, 2018, and before the time some 2018 tax rates have been determined or received, the first quarter 2019 will be invoiced using incomplete information. The second quarter invoice will reflect the necessary corrections.

This estimate is prepared in May 2018 using 2017 tax rates and levies.

ESTIMATED 2019 COST ALLOCATION TO TAXING UNITS

Jur No.	Taxing Unit	Tax Year	Taxable Value as of 4/6/2018	Tax Rate	Total Levy	Frozen Levy Loss	Adjusted Levy	Allocation Ratio	2019 Budget Allocation
<u>SCHOOL DISTRICTS</u>									
001	HOUSTON ISD	2017	172,162,592,371	1.21	2,077,486,002	63,373,828	2,014,112,174	0.1733252579	15,268,993
002	DEER PARK ISD	2017	8,133,254,252	1.56	126,610,369	1,448,004	125,162,365	0.0107708992	948,857
003	WALLER ISD	2017	1,605,011,668	1.44	23,112,168	254,438	22,857,730	0.0019670314	173,285
004	CYPRESS FAIRBANKS ISD	2017	49,822,498,584	1.44	717,443,980	13,826,415	703,617,565	0.0605501012	5,334,133
005	CROSBY ISD	2017	1,842,780,246	1.67	30,774,430	1,265,273	29,509,157	0.0025394227	223,709
006	CHANNELVIEW ISD	2017	2,644,381,539	1.40	36,915,566	496,240	36,419,326	0.0031340802	276,095
007	NEW CANEY ISD	2017	64,260,839	1.67	1,073,156	41,412	1,031,744	0.0000887872	7,822
008	ALIEF ISD	2017	15,307,112,854	1.33	203,584,601	891,029	202,693,572	0.0174428793	1,536,622
009	ALDINE ISD	2017	19,444,191,925	1.37	267,044,199	1,125,493	265,918,706	0.0228837445	2,015,933
015	GALENA PARK ISD	2017	8,206,394,899	1.56	128,290,571	1,414,847	126,875,724	0.0109183430	961,846
016	GOOSE CREEK ISD	2017	8,858,814,066	1.43	126,848,473	1,762,680	125,085,793	0.0107643098	948,277
017	KLEIN ISD	2017	20,754,070,856	1.43	296,783,213	8,850,358	287,932,855	0.0247781812	2,182,822
018	HUMBLE ISD	2017	15,844,952,597	1.52	240,843,279	8,149,683	232,693,596	0.0200245438	1,764,053
019	KATY ISD	2017	22,256,012,008	1.52	337,534,678	2,658,440	334,876,238	0.0288179135	2,538,701
020	LA PORTE ISD	2017	9,874,739,852	1.38	136,271,410	849,177	135,422,233	0.0116538164	1,026,638
021	PASADENA ISD	2017	13,509,769,031	1.48	199,944,582	4,267,819	195,676,763	0.0168390449	1,483,428
023	SHELDON ISD	2017	5,406,855,676	1.47	79,480,778	225,225	79,255,553	0.0068203694	600,837
024	SPRING ISD	2017	12,639,449,331	1.51	190,855,685	3,745,216	187,110,469	0.0161018690	1,418,487
025	SPRING BRANCH ISD	2017	32,158,206,582	1.39	448,446,191	28,226,000	420,220,191	0.0361622227	3,185,694
026	TOMBALL ISD	2017	9,714,309,552	1.34	130,171,748	3,185,676	126,986,072	0.0109278391	962,683
027	CLEAR CREEK ISD	2017	14,750,256,974	1.40	206,503,598	6,669,019	199,834,579	0.0171968475	1,514,948
028	DAYTON ISD	2017	4,355,550	1.39	60,542	737	59,805	0.0000051465	453
029	PEARLAND ISD	2017	184,297,230	1.42	2,608,912	325,672	2,283,240	0.0001964852	17,309
030	HUFFMAN ISD	2017	1,168,071,117	1.40	16,352,996	526,138	15,826,858	0.0013619868	119,984
031	STAFFORD MSD	2017	8,085,740	1.23	99,459	4,945	94,514	0.0000081334	717
<u>COUNTY-WIDE UNITS</u>									
040	HARRIS COUNTY	2017	436,140,173,244	0.42	1,823,109,538	0	1,823,109,538	0.1568884469	13,821,014
041	HARRIS COUNTY FLOOD CONTROL	2017	427,419,749,112	0.03	121,002,531	0	121,002,531	0.0104129230	917,322
042	PORT OF HOUSTON AUTHORITY	2017	427,399,329,272	0.01	53,681,356	0	53,681,356	0.0046195713	406,959
043	HARRIS COUNTY HOSPITAL DIST	2017	427,423,266,541	0.17	731,321,209	0	731,321,209	0.0629341497	5,544,155
044	HARRIS COUNTY DPT OF EDUCATION	2017	436,193,223,127	0.01	22,660,238	0	22,660,238	0.0019500362	171,788
<u>COLLEGE DISTRICTS</u>									
045	LONE STAR COLLEGE SYSTEM DISTRICT	2017	139,077,984,864	0.11	149,926,068	594,709	149,331,359	0.0128507720	1,132,083
046	LEE JR COLLEGE DISTRICT	2017	8,922,102,013	0.25	22,340,943	312,504	22,028,439	0.0018956664	166,998
047	SAN JACINTO COMMUNITY COLLEGE DISTRICT	2017	51,692,072,496	0.18	94,769,661	0	94,769,661	0.0081554425	718,450
048	HOUSTON COMMUNITY COLLEGE SYSTEM	2017	193,385,355,554	0.10	193,893,959	0	193,893,959	0.0166856250	1,469,912
<u>CITIES</u>									
051	CITY OF BAYTOWN	2017	3,501,459,164	0.82	28,783,045	405,761	28,377,284	0.0024420189	215,129
052	CITY OF BELLAIRE	2017	4,880,727,135	0.42	20,298,944	0	20,298,944	0.0017468340	153,887
053	CITY OF BUNKER VILLAGE	2017	2,187,210,521	0.28	6,058,573	0	6,058,573	0.0005213730	45,930

ESTIMATED 2019 COST ALLOCATION TO TAXING UNITS

Jur No.	Taxing Unit	Tax Year	Taxable Value as of 4/6/2018	Tax Rate	Total Levy	Frozen Levy Loss	Adjusted Levy	Allocation Ratio	2019 Budget Allocation
054	CITY OF DEER PARK	2017	2,640,766,847	0.72	19,013,521	0	19,013,521	0.0016362164	144,142
055	CITY OF HEDWIG VILLAGE	2017	1,011,367,647	0.27	2,749,534	0	2,749,534	0.0002366123	20,844
056	CITY OF EL LAGO	2017	239,572,999	0.53	1,265,113	0	1,265,113	0.0001088698	9,591
057	CITY OF GALENA PARK	2017	563,869,717	1.04	5,849,866	0	5,849,866	0.0005034126	44,348
058	CITY OF FRIENDSWOOD	2017	654,140,724	0.53	3,449,605	0	3,449,605	0.0002968572	26,151
059	CITY OF PEARLAND	2017	927,563,749	0.69	6,354,359	353,640	6,000,719	0.0005163944	45,492
060	CITY OF HILSHIRE VILLAGE	2017	231,223,439	0.50	1,161,109	0	1,161,109	0.0000999197	8,802
061	CITY OF HOUSTON	2017	227,134,468,922	0.58	1,326,942,281	0	1,326,942,281	0.1141905680	10,059,565
062	CITY OF HUMBLE	2017	1,820,799,682	0.23	4,105,375	0	4,105,375	0.0003532897	31,123
063	CITY OF KATY	2017	848,502,821	0.49	4,129,833	0	4,129,833	0.0003553945	31,308
064	CITY OF MISSOURI CITY	2017	300,814,073	0.60	1,804,884	0	1,804,884	0.0001553200	13,683
065	CITY OF HUNTERS CREEK VILLAGE	2017	2,880,428,136	0.18	5,302,350	0	5,302,350	0.0004562959	40,197
066	CITY OF JACINTO CITY	2017	420,504,892	0.78	3,294,883	0	3,294,883	0.0002835425	24,979
067	CITY OF LEAGUE CITY	2017	164,363,029	0.57	928,651	0	928,651	0.0000799154	7,040
070	CITY OF JERSEY VILLAGE	2017	1,044,077,806	0.74	7,752,278	0	7,752,278	0.0006671255	58,770
071	CITY OF LA PORTE	2017	3,292,611,003	0.71	23,377,538	126,293	23,251,245	0.0020008956	176,268
072	CITY OF MORGAN POINT	2017	520,340,878	0.89	4,636,981	37,914	4,599,067	0.0003957747	34,866
073	CITY OF NASSAU BAY	2017	624,991,661	0.74	4,638,188	0	4,638,188	0.0003991412	35,162
074	CITY OF PASADENA	2017	8,689,582,575	0.58	49,998,815	179,453	49,819,362	0.0042872259	377,681
075	CITY OF PINEY POINT VILLAGE	2017	2,613,766,575	0.26	6,668,764	0	6,668,764	0.0005738832	50,556
076	CITY OF SEABROOK	2017	1,235,912,497	0.57	7,105,397	73,618	7,031,779	0.0006051226	53,308
077	CITY OF SHOREACRES	2017	118,944,573	0.77	910,527	1,379	909,148	0.0000782371	6,892
078	CITY OF SOUTH HOUSTON	2017	648,383,923	0.64	4,171,034	28,486	4,142,548	0.0003564887	31,405
079	CITY OF SOUTHSIDE PLACE	2017	721,063,074	0.32	2,307,402	0	2,307,402	0.0001985644	17,492
080	CITY OF SPRING VALLEY	2017	1,190,914,560	0.43	5,162,615	0	5,162,615	0.0004442710	39,138
082	CITY OF TAYLOR LAKE VILLAGE	2017	448,528,340	0.27	1,209,232	0	1,209,232	0.0001040610	9,167
083	CITY OF TOMBALL	2017	1,846,271,131	0.34	6,304,185	0	6,304,185	0.0005425093	47,792
084	CITY OF WEBSTER	2017	2,057,464,560	0.32	6,527,306	4,686	6,522,620	0.0005613068	49,448
085	CITY OF WEST UNIVERSITY PLACE	2017	6,078,494,687	0.32	19,256,671	0	19,256,671	0.0016571408	145,985
086	CITY OF WALLER	2017	109,749,385	0.47	516,151	0	516,151	0.0000444176	3,913
	SPECIAL DISTRICTS	2017							
100	HARRIS COUNTY MUD 421	2017	29,372,808	1.25	367,160	0	367,160	0.0000315961	2,783
101	ADDICKS UD	2017	315,206,857	0.65	2,033,084	0	2,033,084	0.0001749579	15,413
105	HARRIS COUNTY MUD 264	2017	245,840,865	0.37	897,319	0	897,319	0.0000772192	6,803
106	HARRIS COUNTY MUD 502	2017	82,059,466	1.50	1,230,892	0	1,230,892	0.0001059249	9,331
108	HARRIS COUNTY MUD 255	2017	198,283,148	0.28	555,193	0	555,193	0.0000477774	4,209
110	BAKER ROAD MUD	2017	272,807,904	0.30	818,424	0	818,424	0.0000704298	6,204
111	BAMMEL UD	2017	155,837,473	0.37	576,599	0	576,599	0.0000496195	4,371
112	BARKER CYPRESS MUD	2017	331,815,265	0.84	2,787,248	0	2,787,248	0.0002398578	21,130
115	HARRIS COUNTY MUD 499	2017	69,258,377	0.92	637,177	0	637,177	0.0000548325	4,830
116	BEECHNUT MUD	2017	66,899,881	0.65	434,849	0	434,849	0.0000374211	3,297

ESTIMATED 2019 COST ALLOCATION TO TAXING UNITS

Jur No.	Taxing Unit	Tax Year	Taxable Value as of 4/6/2018	Tax Rate	Total Levy	Frozen Levy Loss	Adjusted Levy	Allocation Ratio	2019 Budget Allocation
117	BILMA PUD	2017	465,755,284	0.53	2,468,503	0	2,468,503	0.0002124280	18,714
118	BISSONNET MUD	2017	358,394,869	0.57	2,042,851	0	2,042,851	0.0001757984	15,487
120	WEST RANCH MANAGEMENT DISTRICT	2017	0	0.50	0	0	0	0.0000000000	0
121	BRIDGESTONE MUD	2017	1,448,449,212	0.52	7,531,936	0	7,531,936	0.0006481639	57,100
124	BAYBROOK MUD	2017	332,705,217	1.11	3,693,028	0	3,693,028	0.0003178051	27,997
125	THE WOODLANDS TOWNSHIP	2017	2,517,942,013	0.23	5,791,267	0	5,791,267	0.0004983699	43,904
128	HARRIS COUNTY MUD 250	2017	55,323,761	1.15	636,223	0	636,223	0.0000547504	4,823
129	HARRIS COUNTY MUD 276	2017	389,555,328	0.55	2,142,554	0	2,142,554	0.0001843784	16,243
131	CNP UTILITY DISTRICT	2017	624,286,001	0.28	1,748,001	0	1,748,001	0.0001504250	13,252
134	CASTLEWOOD MUD	2017	283,684,047	0.43	1,219,841	0	1,219,841	0.0001049739	9,248
135	CEDAR BAYOU PARK UD	2017	32,649,355	0.09	28,320	0	28,320	0.0000024371	215
136	CHARTERWOOD MUD	2017	413,352,327	0.42	1,736,080	0	1,736,080	0.0001493991	13,161
137	CHELFORD CITY MUD	2017	139,144,593	0.39	542,664	0	542,664	0.0000466992	4,114
138	CHELFORD ONE MUD	2017	204,372,069	0.49	1,001,423	0	1,001,423	0.0000861779	7,592
139	CHIMNEY HILL MUD	2017	354,134,221	0.78	2,762,247	0	2,762,247	0.0002377063	20,941
140	CIMARRON MUD	2017	834,299,879	0.37	3,045,195	0	3,045,195	0.0002620555	23,086
141	CLAY ROAD MUD	2017	182,423,255	0.71	1,295,205	0	1,295,205	0.0001114594	9,819
142	CLEAR LAKE CITY WATER AUTHORITY	2017	5,603,564,651	0.27	15,129,625	0	15,129,625	0.0013019862	114,698
145	CORNERSTONE MUD	2017	365,988,032	0.30	1,097,964	0	1,097,964	0.0000944857	8,324
146	CROSBY MUD	2017	265,172,239	0.50	1,325,861	0	1,325,861	0.0001140975	10,051
147	CY - CHAMP PUD	2017	567,348,233	0.37	2,099,188	0	2,099,188	0.0001806465	15,914
148	CYPRESS CREEK UD	2017	193,648,053	0.21	396,979	0	396,979	0.0000341622	3,010
149	CYPRESS FOREST PUD	2017	681,009,621	0.29	1,974,928	0	1,974,928	0.0001699532	14,972
150	CYPRESS HILL MUD 1	2017	841,862,287	0.75	6,313,967	0	6,313,967	0.0005433510	47,866
151	CYPRESS KLEIN UD	2017	269,876,660	0.11	302,262	0	302,262	0.0000260113	2,291
152	CYPRESSWOOD UD	2017	166,879,192	0.36	600,765	0	600,765	0.0000516991	4,554
153	CAMFIELD MUD	2017	13,375,752	0.50	66,879	0	66,879	0.0000057553	507
154	LOWER KIRBY PEARLAND MGMT DIST	2017	208,457,485	0.70	1,459,202	0	1,459,202	0.0001255722	11,062
156	HARRIS COUNTY MUD 278	2017	456,091,855	0.98	4,469,700	0	4,469,700	0.0003846419	33,885
159	HARRIS COUNTY MUD 290	2017	724,489,257	0.83	6,013,261	0	6,013,261	0.0005174737	45,587
161	MEADOWHILL REGIONAL MUD	2017	507,104,204	0.75	3,803,282	0	3,803,282	0.0003272930	28,833
162	DOWDELL PUD	2017	475,466,208	0.84	3,993,916	0	3,993,916	0.0003436981	30,278
163	EL DORADO UD	2017	120,500,796	0.49	590,454	0	590,454	0.0000508118	4,476
164	EMERALD FOREST UD	2017	354,921,144	0.66	2,324,733	0	2,324,733	0.0002000559	17,624
165	ENCANTO REAL UD	2017	278,956,803	0.93	2,594,298	0	2,594,298	0.0002232534	19,667
170	HARRIS COUNTY MUD 286	2017	635,737,197	0.13	826,458	0	826,458	0.0000711212	6,265
171	FALLBROOK UD	2017	240,083,578	0.28	672,234	0	672,234	0.0000578494	5,096
172	FAULKY GULLY MUD	2017	614,356,369	0.38	2,334,554	0	2,334,554	0.0002009010	17,698
174	FOREST HILLS MUD	2017	96,501,884	1.07	1,032,570	0	1,032,570	0.0000888582	7,828
175	FOUNTAINHEAD MUD	2017	274,757,768	0.58	1,593,595	0	1,593,595	0.0001371375	12,081
176	FRY ROAD MUD	2017	275,790,321	0.44	1,213,477	0	1,213,477	0.0001044263	9,199

ESTIMATED 2019 COST ALLOCATION TO TAXING UNITS

Jur No.	Taxing Unit	Tax Year	Taxable Value as of 4/6/2018	Tax Rate	Total Levy	Frozen Levy Loss	Adjusted Levy	Allocation Ratio	2019 Budget Allocation
177	HARRIS COUNTY MUD 415	2017	42,930,984	0.80	343,448	0	343,448	0.0000295556	2,604
178	HARRIS COUNTY ID 18	2017	1,818,086,715	1.12	20,362,571	0	20,362,571	0.0017523095	154,369
179	HARRIS COUNTY MUD 304	2017	255,632,532	0.80	2,045,060	0	2,045,060	0.0001759885	15,504
180	HARRIS COUNTY MUD 275	2017	80,168,222	0.90	721,514	0	721,514	0.0000620902	5,470
182	GRANT ROAD PUD	2017	339,461,285	0.59	1,985,849	0	1,985,849	0.0001708931	15,055
183	GREENWOOD UD	2017	182,173,644	0.75	1,366,302	0	1,366,302	0.0001175777	10,358
185	GREENS TRAIL MUD	2017	297,097,496	0.21	623,905	0	623,905	0.0000536904	4,730
186	GREENS PARKWAY MUD	2017	667,113,471	0.33	2,201,474	0	2,201,474	0.0001894488	16,689
187	HARRIS COUNTY MUD 287	2017	295,443,485	1.22	3,604,411	0	3,604,411	0.0003101791	27,325
189	HARRIS COUNTY MUD 489	2017	7,708,059	1.00	77,081	0	77,081	0.0000066332	584
190	HARRIS COUNTY MUD 284	2017	208,695,644	0.86	1,794,783	0	1,794,783	0.0001544508	13,606
193	HARRIS COUNTY MUD 285	2017	700,234,402	0.72	5,041,688	0	5,041,688	0.0004338646	38,221
197	HARRIS COUNTY MUD 401	2017	299,479,316	1.03	3,084,637	0	3,084,637	0.0002654497	23,385
200	HARRIS COUNTY FWSD 1A	2017	59,918,416	0.45	269,633	0	269,633	0.0000232034	2,044
205	HARRIS COUNTY MUD 321	2017	232,089,214	1.05	2,436,937	0	2,436,937	0.0002097116	18,474
206	HARRIS COUNTY FWSD 6	2017	320,664,472	0.21	688,627	0	688,627	0.0000592601	5,220
207	HARRIS COUNTY MUD 282	2017	279,584,325	0.85	2,376,467	0	2,376,467	0.0002045079	18,016
208	HARRIS COUNTY MUD 316	2017	120,052,997	0.51	612,270	0	612,270	0.0000526891	4,642
213	HARRIS COUNTY MUD 322	2017	325,180,481	0.52	1,690,939	0	1,690,939	0.0001455145	12,819
220	HARRIS COUNTY MUD 342	2017	266,743,451	0.76	2,027,250	0	2,027,250	0.0001744558	15,369
222	HARRIS COUNTY MUD 344	2017	414,051,963	0.85	3,519,442	0	3,519,442	0.0003028670	26,681
224	HARRIS COUNTY MUD 345	2017	589,183,845	0.25	1,472,960	0	1,472,960	0.0001267562	11,167
225	HARRIS COUNTY MUD 346	2017	143,169,478	0.10	143,169	0	143,169	0.0000123205	1,085
227	HARRIS COUNTY FWSD 27	2017	68,712,661	0.60	412,276	0	412,276	0.0000354786	3,125
228	HARRIS COUNTY MUD 404	2017	81,319,759	0.86	700,366	0	700,366	0.0000602703	5,309
229	HARRIS COUNTY MUD 412	2017	326,797,674	0.94	3,071,898	0	3,071,898	0.0002643535	23,288
230	HARRIS COUNTY MUD 407	2017	132,388,500	0.32	423,643	0	423,643	0.0000364568	3,212
231	HARRIS COUNTY MUD 405	2017	31,122,851	1.30	404,597	0	404,597	0.0000348178	3,067
232	HARRIS COUNTY MUD 433	2017	430,440,252	1.20	5,165,283	0	5,165,283	0.0004445006	39,158
234	HARRIS COUNTY MUD 451	2017	80,916,701	0.92	741,027	0	741,027	0.0000637694	5,618
235	HARRIS COUNTY MUD 459	2017	64,757,040	0.80	518,056	0	518,056	0.0000445815	3,927
236	HARRIS COUNTY MUD 416	2017	86,395,043	0.65	561,568	0	561,568	0.0000483260	4,257
237	HARRIS COUNTY MUD 434	2017	114,832,751	1.23	1,409,572	0	1,409,572	0.0001213013	10,686
238	HARRIS COUNTY MUD 439	2017	14,034,093	0.80	112,273	0	112,273	0.0000096617	851
241	HARRIS COUNTY MUD 460	2017	86,805,254	0.74	642,359	0	642,359	0.0000552785	4,870
242	HARRIS COUNTY MUD 450	2017	229,228,034	0.79	1,799,440	0	1,799,440	0.0001548516	13,642
243	HARRIS COUNTY MUD 480	2017	68,689,186	1.44	989,124	0	989,124	0.0000851195	7,499
246	HARRIS COUNTY MUD 432	2017	183,598,267	1.38	2,533,656	0	2,533,656	0.0002180348	19,208
247	HARRIS COUNTY FWSD 47	2017	120,837,981	0.95	1,147,961	0	1,147,961	0.0000987883	8,703
248	HARRIS COUNTY MUD 481	2017	122,601,175	1.16	1,422,174	0	1,422,174	0.0001223858	10,782
249	HARRIS COUNTY MUD 406	2017	352,372,416	1.05	3,699,910	0	3,699,910	0.0003183973	28,049

ESTIMATED 2019 COST ALLOCATION TO TAXING UNITS

Jur No.	Taxing Unit	Tax Year	Taxable Value as of 4/6/2018	Tax Rate	Total Levy	Frozen Levy Loss	Adjusted Levy	Allocation Ratio	2019 Budget Allocation
251	HARRIS COUNTY FWSD 51	2017	526,960,208	0.25	1,317,401	0	1,317,401	0.0001133695	9,987
252	CHAMPIONS MUD	2017	359,612,257	0.33	1,168,740	0	1,168,740	0.0001005764	8,860
253	BRAZORIA COUNTY MUD 18	2017	230,187,999	0.31	713,583	0	713,583	0.0000614077	5,410
254	KINGS MANOR MUD	2017	70,665,861	0.70	494,661	0	494,661	0.0000425683	3,750
255	HARRIS COUNTY MUD 501	2017	501,459,283	1.24	6,218,095	0	6,218,095	0.0005351007	47,139
256	HARRIS-BRAZORIA CO MUD 509	2017	103,094,810	0.85	876,306	0	876,306	0.0000754109	6,643
257	HARRIS COUNTY MUD 500	2017	115,779,199	1.23	1,418,295	0	1,418,295	0.0001220520	10,752
258	HARRIS COUNTY FWSD 58	2017	125,902,691	0.61	768,006	0	768,006	0.0000660911	5,822
261	HARRIS COUNTY FWSD 61	2017	1,034,713,244	0.31	3,207,611	0	3,207,611	0.0002760323	24,317
264	HARRIS COUNTY ID 1	2017	6,548,097,050	0.14	9,393,245	0	9,393,245	0.0008083396	71,210
276	HARRIS COUNTY MUD 396	2017	367,436,245	0.71	2,608,797	0	2,608,797	0.0002245011	19,777
301	HARRIS COUNTY MUD 1	2017	718,247,118	0.79	5,638,240	0	5,638,240	0.0004852011	42,744
305	HARRIS COUNTY MUD 5	2017	191,143,213	1.11	2,121,690	0	2,121,690	0.0001825829	16,085
306	HARRIS COUNTY MUD 6	2017	164,162,250	0.52	853,644	0	853,644	0.0000734607	6,471
308	HARRIS COUNTY MUD 8	2017	164,848,959	0.57	939,639	0	939,639	0.0000808610	7,123
311	HARRIS COUNTY MUD 11	2017	170,769,957	0.77	1,306,390	0	1,306,390	0.0001124219	9,904
313	CLEAR BROOK CITY MUD	2017	951,892,116	0.67	6,377,677	0	6,377,677	0.0005488336	48,349
316	HARRIS COUNTY MUD 16	2017	169,242,526	0.59	998,531	0	998,531	0.0000859290	7,570
318	HARRIS COUNTY MUD 18	2017	297,798,803	0.36	1,072,076	0	1,072,076	0.0000922579	8,127
319	HARRIS COUNTY MUD 494	2017	99,675,248	1.50	1,495,129	0	1,495,129	0.0001286639	11,335
321	HARRIS COUNTY MUD 461	2017	277,480,087	0.65	1,803,621	0	1,803,621	0.0001552114	13,673
323	HARRIS COUNTY MUD 23	2017	165,434,814	0.46	761,000	0	761,000	0.0000654882	5,769
324	HARRIS COUNTY MUD 24	2017	786,272,139	0.46	3,616,852	0	3,616,852	0.0003112497	27,419
325	HARRIS COUNTY MUD 25	2017	63,005,306	0.70	441,037	0	441,037	0.0000379536	3,344
326	HARRIS COUNTY MUD 26	2017	759,422,346	0.69	5,240,014	0	5,240,014	0.0004509316	39,725
327	HARRIS-WALLER CNTIES MUD 2	2017	47,057,752	0.95	447,049	0	447,049	0.0000384710	3,389
331	HARRIS COUNTY MUD 529	2017	108,349,359	0.75	812,620	0	812,620	0.0000699304	6,160
332	HARRIS COUNTY MUD 449	2017	186,298,232	1.42	2,645,435	0	2,645,435	0.0002276540	20,055
333	HARRIS COUNTY MUD 33	2017	192,746,724	0.81	1,561,248	0	1,561,248	0.0001343538	11,836
334	HARRIS COUNTY WCID 159	2017	1,425,326	0.50	7,127	0	7,127	0.0000006133	54
336	HARRIS COUNTY MUD 36	2017	608,837,294	0.24	1,461,210	0	1,461,210	0.0001257450	11,077
337	HARRIS COUNTY MUD 504	2017	111,577,896	1.39	1,550,933	0	1,550,933	0.0001334662	11,758
338	HARRIS COUNTY ID 12	2017	20,133,906	0.55	110,736	0	110,736	0.0000095294	839
339	HARRIS COUNTY MUD 530	2017	100,806,632	1.25	1,260,083	0	1,260,083	0.0001084370	9,553
340	HARRIS COUNTY MUD 531	2017	83,938,695	1.35	1,133,172	0	1,133,172	0.0000975156	8,591
341	PEARLAND MUNICIP MGMT DIST 2	2017	10,672,023	0.10	10,672	0	10,672	0.0000009184	81
342	HARRIS COUNTY MUD 422	2017	4,741,755	1.50	71,126	0	71,126	0.0000061208	539
343	HARRIS COUNTY MUD 43	2017	190,596,834	0.50	952,984	0	952,984	0.0000820094	7,225
344	HARRIS COUNTY MUD 44	2017	158,391,380	0.41	649,405	0	649,405	0.0000558848	4,923
345	HARRIS COUNTY ID 18 (DA 1)	2017	499,283,161	0.37	1,822,384	0	1,822,384	0.0001568260	13,816
346	HARRIS COUNTY MUD 46	2017	221,005,408	0.47	1,038,725	0	1,038,725	0.0000893879	7,875

ESTIMATED 2019 COST ALLOCATION TO TAXING UNITS

Jur No.	Taxing Unit	Tax Year	Taxable Value as of 4/6/2018	Tax Rate	Total Levy	Frozen Levy Loss	Adjusted Levy	Allocation Ratio	2019 Budget Allocation
347	NORTHAMPTON MUD (DA)	2017	97,691,250	0.64	625,224	0	625,224	0.0000538039	4,740
348	HARRIS COUNTY MUD 48	2017	33,790,116	0.49	165,572	0	165,572	0.0000142484	1,255
349	HARRIS COUNTY MUD 49	2017	443,685,040	0.88	3,904,428	0	3,904,428	0.0003359972	29,600
350	HARRIS COUNTY MUD 50	2017	81,862,284	1.09	892,299	0	892,299	0.0000767872	6,765
351	HARRIS COUNTY WCID 161	2017	128,948,805	0.85	1,096,065	0	1,096,065	0.0000943223	8,309
353	HARRIS COUNTY MUD 53	2017	786,253,798	0.60	4,717,523	0	4,717,523	0.0004059684	35,764
354	HARRIS-WALLER CNTIES MUD 3	2017	9,779	0.93	91	0	91	0.0000000078	1
355	HARRIS COUNTY MUD 55	2017	872,792,677	0.40	3,491,171	0	3,491,171	0.0003004342	26,467
356	HARRIS COUNTY MUD 495	2017	107,891,894	1.50	1,618,378	0	1,618,378	0.0001392702	12,269
357	INTERCONTINENTAL MUD	2017	8,329,300	1.25	104,116	0	104,116	0.0000089597	789
358	HARRIS COUNTY MUD 58	2017	82,090,351	0.70	574,632	0	574,632	0.0000494502	4,356
359	HARRIS COUNTY MUD 537	2017	70,986,309	0.50	354,932	0	354,932	0.0000305438	2,691
360	HARRIS COUNTY MUD 319	2017	18,116,624	1.50	271,749	0	271,749	0.0000233855	2,060
361	HARRIS COUNTY MUD 61	2017	329,153,967	0.48	1,579,939	0	1,579,939	0.0001359623	11,978
362	HARRIS COUNTY MUD 62	2017	156,052,090	0.58	897,300	0	897,300	0.0000772175	6,802
363	HARRIS COUNTY MUD 63	2017	351,100,142	0.33	1,158,630	0	1,158,630	0.0000997064	8,784
364	HARRIS COUNTY MUD 64	2017	308,352,112	0.58	1,788,442	0	1,788,442	0.0001539051	13,558
365	HARRIS COUNTY MUD 65	2017	388,144,909	0.67	2,600,571	0	2,600,571	0.0002237932	19,715
366	GENERATION PARK MGMT DIST	2017	701,904,694	1.33	9,335,332	0	9,335,332	0.0008033559	70,771
368	HARRIS COUNTY ID 015	2017	61,595,753	1.25	769,947	0	769,947	0.0000662581	5,837
369	HARRIS COUNTY MUD 69	2017	180,696,079	0.38	686,645	0	686,645	0.0000590895	5,205
370	HARRIS COUNTY MUD 70	2017	367,455,382	0.65	2,388,460	0	2,388,460	0.0002055399	18,107
371	HARRIS COUNTY MUD 71	2017	723,874,273	0.80	5,790,994	0	5,790,994	0.0004983464	43,902
372	HARRIS COUNTY MUD 438	2017	75,947,445	0.50	379,737	0	379,737	0.0000326784	2,879
375	HARRIS COUNTY MUD 213B	2017	18,064,737	0.80	144,518	0	144,518	0.0000124366	1,096
376	HARRIS COUNTY MUD 457	2017	60,624,541	1.50	909,368	0	909,368	0.0000782560	6,894
379	HARRIS COUNTY MUD 381	2017	153,963,094	0.63	969,967	0	969,967	0.0000834709	7,353
381	HARRIS COUNTY MUD 81	2017	585,083,304	0.33	1,930,775	0	1,930,775	0.0001661536	14,637
382	HARRIS COUNTY MUD 82	2017	534,896,899	0.68	3,610,554	0	3,610,554	0.0003107077	27,372
383	HARRIS COUNTY MUD 383	2017	512,301,028	0.77	3,944,718	0	3,944,718	0.0003394643	29,905
384	HARRIS COUNTY MUD 397	2017	362,917,648	0.65	2,358,965	0	2,358,965	0.0002030017	17,883
385	HARRIS COUNTY MUD 399	2017	102,319,878	1.07	1,094,823	0	1,094,823	0.0000942154	8,300
386	HARRIS COUNTY MUD 86	2017	237,212,324	0.64	1,506,298	0	1,506,298	0.0001296251	11,419
387	HARRIS COUNTY MUD 391	2017	571,274,125	1.11	6,341,143	0	6,341,143	0.0005456897	48,072
388	HARRIS COUNTY MUD 393	2017	150,495,759	0.70	1,053,470	0	1,053,470	0.0000906568	7,986
389	HARRIS COUNTY MUD 400	2017	461,007,297	0.95	4,379,569	0	4,379,569	0.0003768856	33,202
392	HARRIS COUNTY MUD 411	2017	94,910,872	0.70	664,376	0	664,376	0.0000571732	5,037
394	HARRIS COUNTY MUD 410	2017	204,121,771	0.59	1,204,318	0	1,204,318	0.0001036381	9,130
395	HARRIS MONTGMRY CO MUD 386	2017	2,525,171,573	0.47	11,742,048	0	11,742,048	0.0010104668	89,017
396	HARRIS COUNTY MUD 96	2017	304,272,683	0.90	2,723,241	0	2,723,241	0.0002343496	20,645
399	HARRIS COUNTY MUD 420	2017	72,416,422	1.25	905,205	0	905,205	0.0000778978	6,862

ESTIMATED 2019 COST ALLOCATION TO TAXING UNITS

Jur No.	Taxing Unit	Tax Year	Taxable Value as of 4/6/2018	Tax Rate	Total Levy	Frozen Levy Loss	Adjusted Levy	Allocation Ratio	2019 Budget Allocation
400	HARRIS COUNTY RID 1	2017	106,937,820	0.30	320,813	0	320,813	0.0000276077	2,432
402	HARRIS COUNTY MUD 102	2017	477,644,199	0.64	3,056,923	0	3,056,923	0.0002630648	23,175
404	HARRIS COUNTY MUD 104	2017	319,483,422	0.42	1,341,830	0	1,341,830	0.0001154717	10,172
405	HARRIS COUNTY MUD 105	2017	416,669,247	0.80	3,333,354	0	3,333,354	0.0002868532	25,270
406	HARRIS COUNTY MUD 106	2017	324,212,062	0.86	2,788,224	0	2,788,224	0.0002399418	21,138
408	BAUER LANDING WCID	2017	69,670,289	0.77	536,461	0	536,461	0.0000461654	4,067
409	HARRIS COUNTY MUD 109	2017	578,539,214	0.50	2,892,696	0	2,892,696	0.0002489322	21,930
410	HARRIS COUNTY ID 17	2017	8,544,170	1.25	106,802	0	106,802	0.0000091909	810
411	HARRIS COUNTY MUD 536	2017	20,269,694	1.50	304,045	0	304,045	0.0000261647	2,305
412	DOWDELL PUD (DA)	2017	61,296,300	0.38	232,926	0	232,926	0.0000200445	1,766
413	HARRIS COUNTY MUD 525	2017	36,131	1.50	542	0	542	0.0000000466	4
414	HARRIS COUNTY MUD 542	2017	16,558,740	1.35	223,543	0	223,543	0.0000192371	1,695
416	HARRIS COUNTY MUD 503	2017	235,016	1.50	3,525	0	3,525	0.0000003033	27
418	HARRIS COUNTY MUD 118	2017	231,740,768	0.57	1,311,653	0	1,311,653	0.0001128748	9,944
419	HARRIS COUNTY MUD 119	2017	196,465,076	0.46	905,704	0	905,704	0.0000779407	6,866
420	HARRIS COUNTY MUD 120	2017	483,006,110	0.50	2,415,031	0	2,415,031	0.0002078265	18,308
421	THE WOODLANDS ROAD UD 1	2017	29,602,097	0.22	63,645	0	63,645	0.0000054770	482
422	HARRIS COUNTY MUD 122	2017	84,670,838	0.66	558,828	0	558,828	0.0000480902	4,236
427	HARRIS COUNTY MUD 127	2017	250,487,708	0.68	1,703,316	0	1,703,316	0.0001465796	12,913
428	SAINT GEORGE PLACE MGMT DIST	2017	406,947,560	0.12	467,990	0	467,990	0.0000402731	3,548
430	HARRIS COUNTY MUD 130	2017	554,852,008	0.50	2,774,260	0	2,774,260	0.0002387401	21,032
432	HARRIS COUNTY MUD 132	2017	607,838,261	0.09	573,191	0	573,191	0.0000493262	4,345
433	HARRIS COUNTY MUD 423	2017	2,810,067	1.36	38,217	0	38,217	0.0000032888	290
436	HARRIS COUNTY MUD 136	2017	245,958,546	0.16	403,372	0	403,372	0.0000347123	3,058
441	HARRIS COUNTY MUD 538	2017	78,624	1.50	1,179	0	1,179	0.0000001015	9
444	HARRIS COUNTY MUD 144	2017	156,370,208	0.57	891,310	0	891,310	0.0000767021	6,757
447	HARRIS COUNTY MUD 147	2017	118,437,390	0.81	959,343	0	959,343	0.0000825567	7,273
448	HARRIS COUNTY MUD 148	2017	165,670,059	0.95	1,578,836	0	1,578,836	0.0001358674	11,969
449	HARRIS COUNTY MUD 149	2017	178,103,642	0.36	632,268	0	632,268	0.0000544101	4,793
450	HARRIS COUNTY MUD 150	2017	257,768,902	0.72	1,855,936	0	1,855,936	0.0001597133	14,070
451	HARRIS COUNTY MUD 151	2017	508,144,969	0.35	1,778,507	0	1,778,507	0.0001530502	13,483
452	HARRIS COUNTY MUD 152	2017	513,927,281	0.29	1,490,389	0	1,490,389	0.0001282560	11,299
453	HARRIS COUNTY MUD 153	2017	615,216,625	0.45	2,774,627	0	2,774,627	0.0002387717	21,034
454	HARRIS COUNTY MUD 154	2017	344,491,587	0.69	2,376,992	0	2,376,992	0.0002045530	18,020
455	HARRIS COUNTY MUD 155	2017	140,142,161	0.89	1,247,265	0	1,247,265	0.0001073339	9,456
456	HARRIS COUNTY MUD 156	2017	220,813,895	0.77	1,700,267	0	1,700,267	0.0001463172	12,890
457	HARRIS COUNTY MUD 157	2017	640,365,307	0.68	4,354,484	0	4,354,484	0.0003747269	33,011
458	HARRIS COUNTY MUD 158	2017	375,275,816	0.53	1,996,467	0	1,996,467	0.0001718068	15,135
462	HARRIS COUNTY MUD 162	2017	172,254,416	0.50	852,659	0	852,659	0.0000733759	6,464
463	HARRIS COUNTY MUD 163	2017	309,279,638	0.17	525,775	0	525,775	0.0000452458	3,986
465	HARRIS COUNTY MUD 165	2017	1,276,514,433	1.10	14,041,659	0	14,041,659	0.0012083608	106,450

ESTIMATED 2019 COST ALLOCATION TO TAXING UNITS

Jur No.	Taxing Unit	Tax Year	Taxable Value as of 4/6/2018	Tax Rate	Total Levy	Frozen Levy Loss	Adjusted Levy	Allocation Ratio	2019 Budget Allocation
466	HARRIS COUNTY MUD 166	2017	173,594,103	0.79	1,371,393	0	1,371,393	0.0001180158	10,397
467	HARRIS COUNTY MUD 167	2017	682,317,772	1.06	7,232,568	0	7,232,568	0.0006224016	54,830
468	HARRIS COUNTY MUD 168	2017	483,404,662	0.50	2,417,023	0	2,417,023	0.0002079979	18,323
470	HARRIS COUNTY MUD 170	2017	160,054,265	0.27	432,147	0	432,147	0.0000371886	3,276
472	HARRIS COUNTY MUD 172	2017	349,157,325	0.74	2,583,764	0	2,583,764	0.0002223469	19,588
473	HARRIS COUNTY MUD 173	2017	359,887,303	0.52	1,871,414	0	1,871,414	0.0001610453	14,187
479	HARRIS COUNTY MUD 179	2017	192,709,411	0.26	501,044	0	501,044	0.0000431175	3,798
480	HARRIS COUNTY MUD 180	2017	214,786,634	0.73	1,561,499	0	1,561,499	0.0001343754	11,838
482	HARRIS COUNTY MUD 182	2017	98,423,009	0.40	393,692	0	393,692	0.0000338793	2,985
483	HARRIS COUNTY MUD 183	2017	222,331,585	0.48	1,067,192	0	1,067,192	0.0000918376	8,090
484	HARRIS COUNTY MUD 382	2017	181,316,711	0.55	997,242	0	997,242	0.0000858181	7,560
485	HARRIS COUNTY MUD 185	2017	96,098,163	0.54	516,528	0	516,528	0.0000444500	3,916
486	HARRIS COUNTY MUD 186	2017	301,464,484	0.22	663,222	0	663,222	0.0000570738	5,028
488	HARRIS COUNTY MUD 188	2017	422,964,543	0.38	1,607,265	0	1,607,265	0.0001383139	12,185
489	HARRIS COUNTY MUD 189	2017	230,288,297	0.39	886,610	0	886,610	0.0000762976	6,721
490	HARRIS COUNTY MUD 390	2017	321,064,648	0.70	2,247,453	0	2,247,453	0.0001934055	17,038
491	HARRIS COUNTY MUD 191	2017	356,782,764	0.24	856,279	0	856,279	0.0000736874	6,491
493	HARRIS COUNTY MUD 389	2017	170,918,552	0.95	1,623,726	0	1,623,726	0.0001397304	12,309
496	HARRIS COUNTY MUD 196	2017	467,406,144	0.62	2,897,918	0	2,897,918	0.0002493815	21,969
500	HARRIS COUNTY MUD 200	2017	293,704,809	0.59	1,732,858	0	1,732,858	0.0001491218	13,137
501	HARRIS COUNTY MUD 374	2017	461,559,788	0.85	3,923,258	0	3,923,258	0.0003376176	29,742
502	HARRIS COUNTY MUD 202	2017	154,825,903	1.25	1,935,324	0	1,935,324	0.0001665451	14,672
504	HARRIS COUNTY MUD 371	2017	296,777,038	0.88	2,596,799	0	2,596,799	0.0002234686	19,686
505	HARRIS COUNTY MUD 205	2017	68,348,898	0.25	170,872	0	170,872	0.0000147045	1,295
506	HARRIS COUNTY MUD 419	2017	1,042,659,915	0.94	9,801,003	0	9,801,003	0.0008434294	74,302
507	HARRIS COUNTY MUD 468	2017	621,267,128	0.57	3,541,223	0	3,541,223	0.0003047414	26,846
508	HARRIS COUNTY MUD 208	2017	235,294,605	0.41	964,708	0	964,708	0.0000830183	7,313
509	HARRIS COUNTY MUD 372	2017	828,293,096	0.16	1,325,269	0	1,325,269	0.0001140466	10,047
510	HARRIS COUNTY MUD 373	2017	167,869,765	0.25	419,674	0	419,674	0.0000361152	3,182
511	HARRIS COUNTY MUD 211	2017	78,028,312	0.56	436,959	0	436,959	0.0000376027	3,313
514	HARRIS COUNTY MUD 220	2017	168,257,479	0.85	1,430,189	0	1,430,189	0.0001230755	10,842
515	HARRIS COUNTY MUD 215	2017	43,839,065	0.50	219,195	0	219,195	0.0000188629	1,662
516	HARRIS COUNTY MUD 216	2017	257,373,488	0.50	1,286,867	0	1,286,867	0.0001107419	9,756
517	HARRIS COUNTY MUD 217	2017	99,746,515	1.26	1,256,806	0	1,256,806	0.0001081550	9,528
519	HARRIS COUNTY MUD 341	2017	357,512,145	0.34	1,215,541	0	1,215,541	0.0001046039	9,215
520	HARRIS COUNTY MUD 370	2017	675,532,303	0.34	2,296,810	0	2,296,810	0.0001976529	17,412
521	HARRIS COUNTY MUD 221	2017	311,341,118	0.43	1,338,767	0	1,338,767	0.0001152081	10,149
522	HARRIS COUNTY MUD 222	2017	367,865,744	0.35	1,269,137	0	1,269,137	0.0001092161	9,621
524	HARRIS COUNTY MUD 354	2017	553,764,768	0.45	2,464,253	0	2,464,253	0.0002120623	18,682
525	HARRIS COUNTY MUD 355	2017	754,562,839	0.09	679,107	0	679,107	0.0000584408	5,148
526	HARRIS COUNTY MUD 367	2017	631,518,920	0.62	3,915,417	0	3,915,417	0.0003369428	29,683

ESTIMATED 2019 COST ALLOCATION TO TAXING UNITS

Jur No.	Taxing Unit	Tax Year	Taxable Value as of 4/6/2018	Tax Rate	Total Levy	Frozen Levy Loss	Adjusted Levy	Allocation Ratio	2019 Budget Allocation
527	HARRIS COUNTY MUD 359	2017	302,345,501	0.16	483,753	0	483,753	0.0000416296	3,667
528	HARRIS COUNTY MUD 358	2017	388,144,020	0.61	2,367,679	0	2,367,679	0.0002037516	17,949
529	HARRIS COUNTY MUD 360	2017	462,126,870	0.34	1,571,231	0	1,571,231	0.0001352129	11,912
530	HARRIS COUNTY MUD 230	2017	488,360,795	0.50	2,441,804	0	2,441,804	0.0002101305	18,511
531	HARRIS COUNTY MUD 231	2017	11,162,742	1.00	111,627	0	111,627	0.0000096061	846
532	HARRIS COUNTY MUD 361	2017	302,738,132	0.85	2,573,274	0	2,573,274	0.0002214442	19,508
533	HARRIS COUNTY MUD 233	2017	130,626,879	0.68	888,263	0	888,263	0.0000764398	6,734
534	HARRIS COUNTY MUD 364	2017	551,156,161	0.46	2,507,761	0	2,507,761	0.0002158064	19,011
535	HARRIS COUNTY MUD 365	2017	525,905,784	0.47	2,471,757	0	2,471,757	0.0002127081	18,738
538	HARRIS COUNTY MUD 238	2017	457,604,351	0.51	2,333,782	0	2,333,782	0.0002008346	17,692
539	HARRIS COUNTY MUD 239	2017	299,490,865	0.64	1,916,742	0	1,916,742	0.0001649460	14,531
541	HARRIS COUNTY MUD 257	2017	254,040,980	0.55	1,397,225	0	1,397,225	0.0001202388	10,592
542	HARRIS COUNTY MUD 261	2017	138,219,262	0.50	691,096	0	691,096	0.0000594726	5,239
544	HARRIS COUNTY MUD 280	2017	211,783,118	0.63	1,323,644	0	1,323,644	0.0001139067	10,035
545	HARRIS COUNTY MUD 281	2017	289,347,202	0.59	1,692,681	0	1,692,681	0.0001456644	12,832
548	HARRIS COUNTY MUD 248	2017	490,698,527	0.49	2,404,423	0	2,404,423	0.0002069136	18,228
549	HARRIS COUNTY MUD 249	2017	276,096,843	0.80	2,208,775	0	2,208,775	0.0001900770	16,745
550	HARRIS COUNTY ESD 7	2017	12,198,401,042	0.10	11,717,784	0	11,717,784	0.0010083788	88,833
555	HARRIS COUNTY MUD 366	2017	303,030,125	0.16	484,848	0	484,848	0.0000417238	3,676
556	HARRIS COUNTY UD 6	2017	443,602,675	0.22	975,926	0	975,926	0.0000839837	7,399
564	HARRIS COUNTY UD 14	2017	318,493,453	0.35	1,114,727	0	1,114,727	0.0000959283	8,451
565	HARRIS COUNTY UD 15	2017	267,450,762	0.73	1,952,391	0	1,952,391	0.0001680138	14,801
566	HARRIS COUNTY UD 16	2017	261,508,481	0.92	2,405,878	0	2,405,878	0.0002070388	18,239
600	HARRIS COUNTY WCID-FONDREN ROAD	2017	125,455,236	0.57	710,240	0	710,240	0.0000611200	5,384
601	HARRIS COUNTY WCID 1	2017	276,497,390	0.41	1,133,639	0	1,133,639	0.0000975558	8,594
602	HARRIS COUNTY WCID 21	2017	435,703,318	0.37	1,594,674	0	1,594,674	0.0001372303	12,089
603	HARRIS COUNTY WCID 36	2017	329,526,930	0.35	1,153,344	0	1,153,344	0.0000992515	8,744
604	HARRIS COUNTY WCID 50	2017	274,524,291	0.32	883,968	0	883,968	0.0000760702	6,701
605	HARRIS COUNTY WCID 70	2017	109,881,676	0.61	664,784	0	664,784	0.0000572083	5,040
606	HARRIS COUNTY WCID 74	2017	122,916,304	0.95	1,167,705	0	1,167,705	0.0001004873	8,852
609	HARRIS COUNTY WCID 84	2017	277,837,251	0.60	1,667,024	0	1,667,024	0.0001434564	12,638
610	HARRIS COUNTY WCID 89	2017	471,269,085	1.10	5,183,960	0	5,183,960	0.0004461078	39,300
611	HARRIS COUNTY WCID 91	2017	138,057,285	0.25	345,143	0	345,143	0.0000297014	2,617
612	HARRIS COUNTY WCID 92	2017	230,272,436	0.14	332,790	0	332,790	0.0000286384	2,523
613	HARRIS COUNTY WCID 96	2017	881,254,467	0.84	7,402,538	0	7,402,538	0.0006370285	56,119
614	HARRIS COUNTY WCID 155	2017	1,535,758,632	0.14	2,150,062	0	2,150,062	0.0001850245	16,300
616	HARRIS COUNTY WCID 156	2017	182,749,910	0.34	621,350	0	621,350	0.0000534705	4,710
617	HARRIS COUNTY WCID 157	2017	1,077,809,944	0.47	5,011,816	0	5,011,816	0.0004312939	37,995
622	HARRIS COUNTY WCID 109	2017	565,783,283	0.25	1,414,458	0	1,414,458	0.0001217218	10,723
623	HARRIS COUNTY WCID 110	2017	854,324,866	0.43	3,673,597	0	3,673,597	0.0003161329	27,850
624	HARRIS COUNTY WCID 113	2017	84,263,356	0.75	629,110	0	629,110	0.0000541383	4,769

ESTIMATED 2019 COST ALLOCATION TO TAXING UNITS

Jur No.	Taxing Unit	Tax Year	Taxable Value as of 4/6/2018	Tax Rate	Total Levy	Frozen Levy Loss	Adjusted Levy	Allocation Ratio	2019 Budget Allocation
625	HARRIS COUNTY WCID 114	2017	467,586,551	0.25	1,168,966	0	1,168,966	0.0001005959	8,862
626	HARRIS COUNTY WCID 116	2017	313,527,519	0.22	674,084	0	674,084	0.0000580086	5,110
627	HARRIS COUNTY WCID 119	2017	578,080,039	0.48	2,774,784	0	2,774,784	0.0002387852	21,036
628	HARRIS COUNTY WCID 132	2017	141,550,063	0.44	622,820	0	622,820	0.0000535970	4,722
629	HARRIS COUNTY WCID 133	2017	188,045,390	0.77	1,447,950	0	1,447,950	0.0001246039	10,977
630	HARRIS COUNTY WCID 136	2017	101,156,127	0.81	819,365	0	819,365	0.0000705108	6,212
631	HARRIS COUNTY ESD 46	2017	5,343,887,849	0.10	5,343,888	0	5,343,888	0.0004598705	40,512
632	HARRIS COUNTY WCID 145	2017	1,256,348,162	0.06	721,018	0	721,018	0.0000620475	5,466
633	HARRIS COUNTY ESD 9	2017	37,344,625,203	0.05	19,684,352	0	19,684,352	0.0016939451	149,227
634	HARRIS COUNTY ESD 13	2017	7,499,938,810	0.10	7,499,939	0	7,499,939	0.0006454104	56,857
635	HARRIS COUNTY ESD 16	2017	13,431,100,230	0.05	6,644,365	0	6,644,365	0.0005717836	50,371
636	HARRIS COUNTY ESD 20	2017	4,573,407,944	0.10	4,573,408	0	4,573,408	0.0003935665	34,671
637	HARRIS COUNTY ESD 28	2017	3,201,400,888	0.10	3,201,401	0	3,201,401	0.0002754979	24,270
638	HARRIS COUNTY ESD 47	2017	3,550,369,548	0.10	3,400,757	0	3,400,757	0.0002926536	25,781
639	HARRIS COUNTY ESD 24	2017	5,127,776,916	0.10	5,127,777	0	5,127,777	0.0004412730	38,874
640	HARRIS COUNTY ESD 14	2017	661,034,717	0.05	330,517	0	330,517	0.0000284428	2,506
641	HARRIS COUNTY ESD 10	2017	3,874,283,652	0.10	3,874,284	0	3,874,284	0.0003334031	29,371
642	HARRIS COUNTY ESD 25	2017	1,535,903,016	0.10	1,535,903	0	1,535,903	0.0001321728	11,644
643	HARRIS COUNTY ESD 48	2017	11,616,963,590	0.10	11,616,964	0	11,616,964	0.0009997027	88,068
645	HARRIS COUNTY ESD 29	2017	2,845,722,111	0.10	2,845,722	0	2,845,722	0.0002448898	21,573
647	HARRIS COUNTY ESD 17	2017	4,168,325,236	0.10	4,168,325	0	4,168,325	0.0003587069	31,600
648	HARRIS COUNTY ESD 21	2017	1,828,808,777	0.10	1,828,809	0	1,828,809	0.0001573789	13,864
649	HARRIS COUNTY ESD 19	2017	377,958,601	0.03	113,388	0	113,388	0.0000097577	860
650	HARRIS-FT BND CNTIES MUD 1	2017	51,966,001	0.62	322,189	0	322,189	0.0000277261	2,443
651	HEATHERLOCH MUD	2017	241,553,539	0.39	942,059	0	942,059	0.0000810693	7,142
652	HORSEPEN BAYOU MUD	2017	490,201,839	0.55	2,696,110	0	2,696,110	0.0002320149	20,439
654	HUNTERS GLEN MUD	2017	339,762,029	0.72	2,446,287	0	2,446,287	0.0002105162	18,545
656	INTERSTATE MUD	2017	608,955,644	0.39	2,374,927	0	2,374,927	0.0002043753	18,004
657	INVERNESS FOREST ID	2017	147,831,347	0.44	650,458	0	650,458	0.0000559754	4,931
658	JACKRABBIT ROAD PUD	2017	290,825,957	0.30	872,478	0	872,478	0.0000750815	6,614
660	HARRIS-FT BND CNTIES MUD 3	2017	519,229,630	0.82	4,257,683	0	4,257,683	0.0003663967	32,278
662	FORT BEND COUNTY MUD 30	2017	229,094	0.80	1,833	0	1,833	0.0000001577	14
664	HARRIS COUNTY ESD 75	2017	882,382,348	0.10	882,382	0	882,382	0.0000759337	6,689
665	HARRIS COUNTY ESD 15	2017	1,213,244,187	0.05	584,177	0	584,177	0.0000502716	4,429
666	HARRIS COUNTY ESD 11	2017	46,717,178,792	0.04	18,238,387	0	18,238,387	0.0015695120	138,265
667	HARRIS COUNTY ESD 50	2017	4,810,890,664	0.05	2,333,282	0	2,333,282	0.0002007915	17,689
668	HARRIS COUNTY ESD 12	2017	2,992,672,424	0.05	1,427,505	0	1,427,505	0.0001228445	10,822
669	HARRIS COUNTY ESD 80	2017	1,830,678,313	0.05	884,767	0	884,767	0.0000761390	6,707
670	HARRIS COUNTY ESD 60	2017	4,471,373,144	0.05	2,204,387	0	2,204,387	0.0001896994	16,711
671	HARRIS COUNTY ESD 1	2017	15,823,459,223	0.10	15,823,459	0	15,823,459	0.0013616943	119,958
672	HARRIS COUNTY ESD 2	2017	4,363,002,797	0.03	1,295,812	0	1,295,812	0.0001115116	9,824

ESTIMATED 2019 COST ALLOCATION TO TAXING UNITS

Jur No.	Taxing Unit	Tax Year	Taxable Value as of 4/6/2018	Tax Rate	Total Levy	Frozen Levy Loss	Adjusted Levy	Allocation Ratio	2019 Budget Allocation
673	HARRIS COUNTY ESD 3	2017	1,853,710,657	0.10	1,853,711	0	1,853,711	0.0001595219	14,053
674	HARRIS COUNTY ESD 4	2017	1,003,584,863	0.10	1,003,585	0	1,003,585	0.0000863639	7,608
675	HARRIS COUNTY ESD 5	2017	1,654,049,816	0.02	318,405	0	318,405	0.0000274005	2,414
676	HARRIS COUNTY ESD 6	2017	3,044,991,235	0.01	255,779	0	255,779	0.0000220112	1,939
677	HARRIS-FT BND ESD 100	2017	2,516,446,947	0.07	1,776,108	0	1,776,108	0.0001528437	13,465
678	WALLER HARRIS ESD 200	2017	1,531,599,416	0.10	1,523,941	0	1,523,941	0.0001311434	11,553
679	HARRIS COUNTY ESD 8	2017	3,109,034,506	0.10	3,109,035	0	3,109,035	0.0002675493	23,570
681	KINGSBRIDGE MUD	2017	17,142,835	0.60	102,857	0	102,857	0.0000088514	780
682	KIRK MONT MUD	2017	103,473,778	0.54	558,758	0	558,758	0.0000480842	4,236
683	KLEIN PUD	2017	271,529,161	0.43	1,167,575	0	1,167,575	0.0001004762	8,851
684	KLEINWOOD MUD	2017	363,823,057	0.40	1,437,101	0	1,437,101	0.0001236703	10,895
691	LAKE MUD	2017	345,572,342	0.53	1,831,533	0	1,831,533	0.0001576133	13,885
692	LAKE FOREST UD	2017	324,623,875	0.25	811,560	0	811,560	0.0000698391	6,152
693	LANGHAM CREEK UD	2017	469,221,441	0.63	2,956,095	0	2,956,095	0.0002543880	22,410
694	LONGHORN TOWN UD	2017	248,747,699	0.45	1,119,365	0	1,119,365	0.0000963274	8,486
695	LOUETTA NORTH PUD	2017	357,616,674	0.26	929,803	0	929,803	0.0000800146	7,049
696	LOUETTA ROAD UD	2017	124,129,140	0.43	533,755	0	533,755	0.0000459325	4,046
697	LUCE BAYOU PUD	2017	44,049,336	0.93	409,659	0	409,659	0.0000352534	3,106
701	MALCOMSON ROAD UD	2017	730,851,431	0.44	3,215,746	0	3,215,746	0.0002767324	24,379
702	MASON CREEK UD	2017	621,204,780	0.32	2,006,491	0	2,006,491	0.0001726694	15,211
703	BRAZORIA COUNTY MUD 28	2017	133,881,351	0.82	1,097,827	0	1,097,827	0.0000944740	8,323
704	MAYDE CREEK MUD	2017	266,638,286	0.92	2,453,072	0	2,453,072	0.0002111001	18,597
705	MEMORIAL HILLS UD	2017	88,322,938	0.84	737,497	0	737,497	0.0000634656	5,591
706	MEMORIAL MUD	2017	480,435,359	0.42	1,993,807	0	1,993,807	0.0001715779	15,115
707	MEMORIAL VILLAGES WATER AUTHORITY	2017	5,419,646,956	0.03	1,488,398	0	1,488,398	0.0001280847	11,284
709	MILLS ROAD MUD	2017	257,131,545	0.70	1,799,921	0	1,799,921	0.0001548929	13,645
710	MISSION BEND MUD 1	2017	174,904,218	0.26	451,253	0	451,253	0.0000388328	3,421
711	MISSION BEND MUD 2	2017	408,839,818	0.67	2,733,094	0	2,733,094	0.0002351975	20,720
712	MORTON ROAD MUD	2017	169,960,457	0.64	1,087,747	0	1,087,747	0.0000936065	8,246
714	MOUNT HOUSTON ROAD MUD	2017	186,037,040	1.30	2,418,482	0	2,418,482	0.0002081235	18,335
718	NEWPORT MUD	2017	540,691,854	0.59	3,190,082	0	3,190,082	0.0002745238	24,184
721	NORTHAMPTON MUD	2017	621,099,052	0.58	3,602,375	0	3,602,375	0.0003100039	27,310
722	NORTH BELT UD	2017	358,393,364	0.48	1,720,288	0	1,720,288	0.0001480401	13,042
724	NORTHEAST HARRIS CNTY MUD 1	2017	110,592,612	1.45	1,603,593	0	1,603,593	0.0001379979	12,157
725	NORTH FOREST MUD	2017	78,698,589	0.69	543,020	0	543,020	0.0000467298	4,117
727	NORTH MISSION GLEN MUD	2017	3,621,254	0.52	18,831	0	18,831	0.0000016205	143
728	NORTH PARK PUD	2017	225,031,552	0.35	776,359	0	776,359	0.0000668099	5,886
730	NORTHWEST FREEWAY MUD	2017	120,402,385	0.71	854,857	0	854,857	0.0000735651	6,481
731	NORTHGATE CROSSING MUD 1	2017	189,665,220	1.00	1,896,652	0	1,896,652	0.0001632172	14,379
732	NORTHGATE CROSSING MUD 2	2017	274,560,389	0.87	2,388,675	0	2,388,675	0.0002055584	18,109
734	NORTHGATE CROSSING ROAD UD	2017	423,834,745	0.13	529,793	0	529,793	0.0000455916	4,016

ESTIMATED 2019 COST ALLOCATION TO TAXING UNITS

Jur No.	Taxing Unit	Tax Year	Taxable Value as of 4/6/2018	Tax Rate	Total Levy	Frozen Levy Loss	Adjusted Levy	Allocation Ratio	2019 Budget Allocation
745	NORTHWEST HC MUD 5	2017	1,729,466,463	0.78	13,489,838	0	13,489,838	0.0011608736	102,267
746	NORTHWEST HC MUD 6	2017	299,458,883	0.38	1,146,928	0	1,146,928	0.0000986994	8,695
749	NORTHWEST HC MUD 9	2017	384,471,664	0.46	1,749,346	0	1,749,346	0.0001505407	13,262
750	NORTHWEST HC MUD 10	2017	605,992,244	0.67	4,060,148	0	4,060,148	0.0003493977	30,780
752	NORTHWEST HC MUD 12	2017	166,645,242	0.85	1,416,485	0	1,416,485	0.0001218962	10,738
755	NORTHWEST HC MUD 15	2017	414,329,389	0.60	2,485,976	0	2,485,976	0.0002139317	18,846
756	NORTHWEST HC MUD 16	2017	163,602,361	1.12	1,832,346	0	1,832,346	0.0001576833	13,891
759	NORTHWEST HC MUD 19	2017	586,852,820	0.80	4,694,823	0	4,694,823	0.0004040149	35,592
760	NORTHWEST HC MUD 20	2017	224,093,392	0.25	560,233	0	560,233	0.0000482111	4,247
761	NORTHWEST HC MUD 21	2017	128,430,122	0.24	308,232	0	308,232	0.0000265250	2,337
762	NORTHWEST HC MUD 22	2017	171,603,283	0.83	1,415,727	0	1,415,727	0.0001218310	10,733
763	NORTHWEST HC MUD 23	2017	137,228,216	0.77	1,056,657	0	1,056,657	0.0000909311	8,011
764	NORTHWEST HC MUD 24	2017	712,195,414	0.58	4,130,733	0	4,130,733	0.0003554719	31,315
768	NORTHWEST HC MUD 28	2017	115,058,388	0.68	782,397	0	782,397	0.0000673295	5,931
769	NORTHWEST HC MUD 29	2017	351,257,142	0.29	1,018,646	0	1,018,646	0.0000876600	7,722
770	NORTHWEST HC MUD 30	2017	337,202,450	0.68	2,292,977	0	2,292,977	0.0001973231	17,383
771	NORTHWEST HC MUD 32	2017	394,783,341	0.70	2,763,483	0	2,763,483	0.0002378127	20,950
776	NORTHWEST HC MUD 36	2017	224,679,458	0.79	1,774,968	0	1,774,968	0.0001527456	13,456
777	NW PARK CONSOLIDATED MUD	2017	732,029,230	0.43	3,147,726	0	3,147,726	0.0002708789	23,863
778	NOTTINGHAM COUNTRY MUD	2017	972,894,729	0.34	3,307,842	0	3,307,842	0.0002846577	25,077
779	NORTHWOOD MUD 1	2017	62,282,961	1.25	778,537	0	778,537	0.0000669973	5,902
781	OAKMONT PUBLIC UTILITY DISTRICT	2017	451,196,001	0.87	3,925,405	0	3,925,405	0.0003378024	29,759
783	PARKWAY UD	2017	335,720,869	0.73	2,450,762	0	2,450,762	0.0002109013	18,579
786	RANKIN ROAD WEST MUD	2017	101,546,544	1.00	1,015,465	0	1,015,465	0.0000873863	7,698
787	PINE VILLAGE PUD	2017	40,576,203	1.54	624,874	0	624,874	0.0000537738	4,737
788	PONDEROSA FOREST UD	2017	316,456,128	0.10	316,456	0	316,456	0.0000272328	2,399
789	POSTWOOD MUD	2017	126,723,706	0.38	481,550	0	481,550	0.0000414400	3,651
790	PRESTONWOOD FOREST MUD	2017	220,737,283	0.35	772,580	0	772,580	0.0000664847	5,857
801	REID ROAD MUD 1	2017	268,273,493	0.50	1,341,367	0	1,341,367	0.0001154319	10,169
802	REID ROAD MUD 2	2017	514,688,142	0.35	1,801,408	0	1,801,408	0.0001550209	13,656
803	RENN ROAD MUD	2017	131,261,624	0.70	918,831	0	918,831	0.0000790704	6,966
804	RICEWOOD MUD	2017	370,841,105	0.40	1,483,364	0	1,483,364	0.0001276515	11,245
806	ROLLING CREEK UD	2017	262,094,371	0.70	1,834,661	0	1,834,661	0.0001578825	13,909
807	ROLLING FORK PUD	2017	149,271,448	0.39	574,695	0	574,695	0.0000494556	4,357
809	ROYALWOOD MUD	2017	39,322,181	0.49	192,679	0	192,679	0.0000165811	1,461
810	RICHEY ROAD MUD	2017	377,933,486	0.21	793,660	0	793,660	0.0000682987	6,017
811	REMINGTON MUD 1	2017	1,061,203,981	0.48	5,093,779	0	5,093,779	0.0004383473	38,616
822	SAGEMEADOW UD	2017	283,082,151	0.45	1,273,870	0	1,273,870	0.0001096234	9,657
823	SEQUOIA UD	2017	68,514,059	0.45	308,313	0	308,313	0.0000265320	2,337
824	SHASLA PUD	2017	90,593,392	0.94	852,484	0	852,484	0.0000733609	6,463
825	SW HARRIS COUNTY MUD 1	2017	64,852,953	0.62	402,088	0	402,088	0.0000346018	3,048

ESTIMATED 2019 COST ALLOCATION TO TAXING UNITS

Jur No.	Taxing Unit	Tax Year	Taxable Value as of 4/6/2018	Tax Rate	Total Levy	Frozen Levy Loss	Adjusted Levy	Allocation Ratio	2019 Budget Allocation
826	SPANISH COVE PUD	2017	22,343,187	0.70	156,402	0	156,402	0.0000134592	1,186
827	SPENCER ROAD PUD	2017	364,328,047	0.36	1,311,581	0	1,311,581	0.0001128686	9,943
829	SPRING CREEK FOREST PUD	2017	200,124,215	0.47	940,584	0	940,584	0.0000809423	7,131
831	SPRING MEADOWS MUD	2017	240,172,514	0.86	2,065,484	0	2,065,484	0.0001777461	15,658
832	SPRING WEST MUD	2017	322,335,896	0.79	2,546,454	0	2,546,454	0.0002191362	19,305
833	SHELDON ROAD MUD	2017	74,503,700	1.28	953,647	0	953,647	0.0000820665	7,230
841	TATTOR ROAD MUD	2017	195,443,997	0.59	1,153,120	0	1,153,120	0.0000992322	8,742
842	TERRANOVA WEST MUD	2017	229,147,304	0.64	1,466,543	0	1,466,543	0.0001262040	11,118
844	HARRIS COUNTY MUD 368	2017	693,181,619	0.70	4,852,271	0	4,852,271	0.0004175642	36,785
846	TIMBERLAKE ID	2017	153,463,583	0.42	644,547	0	644,547	0.0000554668	4,886
847	TIMBER LANE UD	2017	759,184,030	0.92	6,946,534	0	6,946,534	0.0005977869	52,662
848	TRAIL OF THE LAKES MUD	2017	494,591,296	0.69	3,412,680	0	3,412,680	0.0002936796	25,872
850	HARRIS COUNTY ID 3	2017	2,937,537,775	0.14	4,039,114	0	4,039,114	0.0003475876	30,621
851	WESTADOR MUD	2017	275,271,859	0.17	467,962	0	467,962	0.0000402707	3,548
861	WEST HARRIS COUNTY MUD 1	2017	380,746,967	0.25	951,867	0	951,867	0.0000819133	7,216
862	WEST HARRIS COUNTY MUD 2	2017	277,744,341	0.46	1,277,624	0	1,277,624	0.0001099465	9,686
864	WEST HARRIS COUNTY MUD 4	2017	78,829,080	1.00	788,291	0	788,291	0.0000678367	5,976
865	WEST HARRIS COUNTY MUD 5	2017	174,140,158	1.01	1,758,816	0	1,758,816	0.0001513556	13,334
866	WEST HARRIS COUNTY MUD 6	2017	164,612,094	0.25	411,530	0	411,530	0.0000354144	3,120
867	WEST HARRIS COUNTY MUD 7	2017	304,456,208	0.67	2,039,857	0	2,039,857	0.0001755407	15,464
869	WEST HARRIS COUNTY MUD 9	2017	281,114,772	0.45	1,265,016	0	1,265,016	0.0001088615	9,590
870	WEST HARRIS COUNTY MUD 10	2017	402,313,268	0.65	2,615,036	0	2,615,036	0.0002250380	19,825
871	WEST HARRIS COUNTY MUD 11	2017	937,118,193	0.47	4,404,456	0	4,404,456	0.0003790273	33,390
874	WEST HARRIS COUNTY MUD 14	2017	206,043,958	0.55	1,122,940	0	1,122,940	0.0000966351	8,513
875	WEST HARRIS COUNTY MUD 15	2017	362,858,332	0.25	907,146	0	907,146	0.0000780648	6,877
876	WEST HARRIS COUNTY MUD 16	2017	33,709,759	0.50	168,549	0	168,549	0.0000145046	1,278
877	WEST HARRIS COUNTY MUD 17	2017	122,994,758	1.05	1,285,295	0	1,285,295	0.0001106066	9,744
879	WEST HARRIS COUNTY MUD 21	2017	517,849,497	0.66	3,417,807	0	3,417,807	0.0002941208	25,910
893	WEST KEEGANS BAYOU ID	2017	151,827,631	0.09	142,718	0	142,718	0.0000122817	1,082
894	WESTLAKE MUD 1	2017	202,647,352	0.53	1,074,031	0	1,074,031	0.0000924262	8,142
895	WEST MEMORIAL MUD	2017	278,500,828	0.39	1,086,153	0	1,086,153	0.0000934693	8,234
896	WESTON MUD	2017	780,239,982	0.41	3,198,984	0	3,198,984	0.0002752899	24,252
897	WEST PARK MUD	2017	386,848,374	0.46	1,779,503	0	1,779,503	0.0001531359	13,490
899	WHITE OAK BEND MUD	2017	74,210,239	0.83	615,945	0	615,945	0.0000530054	4,669
901	WINDFERN FOREST UD	2017	355,218,650	0.49	1,740,571	0	1,740,571	0.0001497856	13,195
902	WOODCREEK MUD	2017	182,503,910	0.52	949,020	0	949,020	0.0000816683	7,195
907	NORTHPOINTE WCID	2017	1,100,644,917	0.28	3,081,806	0	3,081,806	0.0002652061	23,363
910	KATY MANAGEMENT DISTRICT 1	2017	140,807,170	0.80	1,126,457	0	1,126,457	0.0000969377	8,540
911	CINCO MUD 3	2017	28,636,129	0.36	101,658	0	101,658	0.0000087482	771
913	CINCO MUD 6	2017	122,249,270	0.33	403,423	0	403,423	0.0000347167	3,058
914	CINCO MUD 9	2017	162,648,277	0.40	642,461	0	642,461	0.0000552872	4,871

ESTIMATED 2019 COST ALLOCATION TO TAXING UNITS

Jur No.	Taxing Unit	Tax Year	Taxable Value as of 4/6/2018	Tax Rate	Total Levy	Frozen Levy Loss	Adjusted Levy	Allocation Ratio	2019 Budget Allocation
915	HARRIS-FT BND CNTIES MUD 5	2017	10,084,577	0.52	51,936	0	51,936	0.0000044694	394
916	FORT BEND WCID 2	2017	51,006,824	0.21	108,390	0	108,390	0.0000093275	822
917	WILLOW FORK DRAINAGE DISTRICT	2017	312,405,514	0.19	577,950	0	577,950	0.0000497357	4,381
921	FALL CREEK MGMT DISTRICT	2017	157,855,184	0.16	252,568	0	252,568	0.0000217348	1,915
532			\$ 3,649,453,749,993		\$11,776,121,517	\$155,702,207	\$11,620,419,310	1.000000001	\$88,094,533