



***HARRIS COUNTY
APPRAISAL DISTRICT
HARRIS COUNTY
HOUSTON, TEXAS***

2022 BUDGET

August 2021

RESOLUTION NO. 2021-01

**A RESOLUTION OF THE BOARD OF DIRECTORS OF THE HARRIS
COUNTY APPRAISAL DISTRICT APPROVING AND ADOPTING
THE 2022 BUDGET OF SAID DISTRICT**

* * * *

WHEREAS, pursuant to the provisions of the Texas Property Tax code, a proposed budget for the Harris County Appraisal District for the year 2022 has heretofore been prepared by the chief appraiser of the district and timely submitted by him to the Board of Directors of such district and to the governing bodies of each taxing unit within such district; and

WHEREAS, following timely notice in writing furnished to the presiding officer of the governing body of each such taxing unit and published in a newspaper of general circulation in Harris County, Texas, in accordance with Section 6.062 of the Texas Property Tax Code, the Board of Directors of said district did on the 18th day of August, 2021, conduct a public hearing on such proposed budget; and

WHEREAS, at such public hearing any and all persons desiring to be heard on any matter relating to said proposed budget were heard and their comments and suggestions were duly noted and considered by the Board of Directors of said district; and

WHEREAS, the Board of Directors of the district now deems it necessary and appropriate to formally approve and adopt at this time the 2022 budget of the Harris County Appraisal District; now, therefore

**BE IT RESOLVED BY THE BOARD OF DIRECTORS OF THE HARRIS COUNTY
APPRAISAL DISTRICT:**

Section 1. That the facts and recitations set forth in the preamble of this Resolution be, and they are hereby, found to be true and correct and that they be, and they are hereby, adopted, ratified, and confirmed.

Section 2. That the proposed budget for the Harris County Appraisal District for the year 2022 as heretofore submitted to and considered by the Board of Directors of such district and as heretofore modified or changed by such Board of Directors of such district during its deliberations on such budget following the public hearing thereon, in the total amount of \$94,872,473 (of which total sum it is anticipated that \$500,000 will be

contributed from such district's general fund balance, and that the remaining \$94,372,473 will be paid to the district by the various taxing units participating in the district according to their respective proportionate shares calculated pursuant to the formula established by Section 6.06(d) of the Texas Property Tax Code) be, and it is hereby, approved and adopted as the official budget of said district for the year 2022.

Section 3. That the chief appraiser of the Harris County Appraisal District be, and he is hereby, authorized to make the interfund transfers between the general fund and the internal service fund as necessary for expenditures related to the group benefits fund.

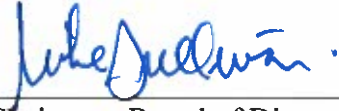
Section 4. That the chief appraiser of the Harris County Appraisal District be, and he is hereby, authorized to transfer unencumbered balances from one budget account to another budget account during the 2022 fiscal year in amounts of \$25,000 or less. Amounts exceeding \$25,000 may be transferred under the following circumstances and conditions: A written request to effect such transfers exceeding \$25,000 shall be submitted by the chief appraiser to the Board of Directors. Such request shall identify the budget account from which it is proposed the transfer will be made, the budget account to which it is proposed the transfer will be made, and the need or justification for such transfer. Approval of such request by formal action of the Board of Directors must be obtained before the chief appraiser shall be authorized to make such transfer.

Section 5. That, for the purpose of authenticating the official 2022 budget of the Harris County Appraisal District adopted hereby, a copy of which is attached hereto and made a part hereof for all purposes, the chairman and secretary of the Board of Directors of said district be, and they are hereby, authorized and directed to affix their signatures on the cover of the original of such budget under the following certification which they shall cause to be placed thereon:

"This is to certify that this is the official 2022 budget of the Harris County Appraisal District approved and adopted by the Board of Directors of said district on August 18, 2021."

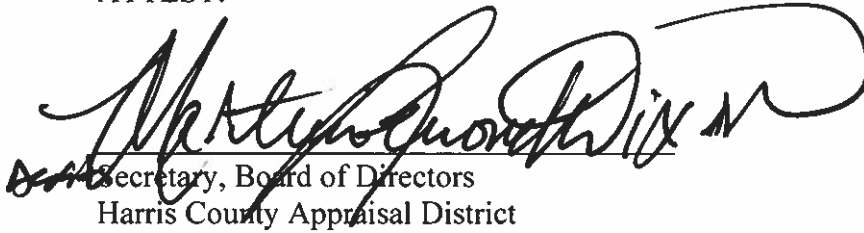
Section 6. That the chief appraiser of the district be, and he is hereby, authorized and directed to place or cause to be placed the official, authenticated original of said 2022 budget among the public records of the district and to make the same available for inspection in the office of the district by any person requesting that right and privilege.

PASSED, APPROVED, AND ADOPTED this the 18th day of August, 2021.



Chairman, Board of Directors
Harris County Appraisal District

ATTEST:



Secretary, Board of Directors
Harris County Appraisal District

(SEAL)



***HARRIS COUNTY
APPRAISAL DISTRICT***

2022 BUDGET

January 1, 2022 through December 31, 2022

**REVENUES & EXPENDITURES
FOR ALL DEPARTMENTS**

**Roland Altinger, Chief Appraiser
Houston, Texas
August 2021**

Contents

- 3 District Officials
Board of directors and chief appraiser
- 4 Plan of Organization
The departments and divisions of the district and the number of full-time equivalent positions

FINANCIAL SECTION

- 6 2022 Budget
Expenditures for the general fund by line item account
- 8 Expenditure Summary & Method of Financing
Summarizes expenditures by account groups and an estimate of revenue used to finance the expenditures
- 9 Line Item Expenditures by Department
General fund expenditures by line item account for each of the district's 3 operating departments
- 11 2022 Budget with Comparisons
Comparison of the 2022 budget to the 2021 budget and 2020 actual expenditures by line item

TEXAS PROPERTY TAX CODE SECTION

- 14 Schedule of Positions
List of full time equivalent positions in alphabetical order; indicating the pay grade and number of positions for each position title
- 20 Schedule of Appraisal Review Board Members
Number of appraisal review board members eligible for payment
- 21 Salary Schedule and Provisions
Employee pay is determined by three salary schedules: Classified, Technical, and Director; list of line item positions; salary adjustment and quality service incentive salary increases; compensatory time; career development program; and, career ladder program

23 General Provisions

Provisions relating to mileage, expense allowances, commissioned security officers uniform cleaning, cell phone allowance, travel regulations, van pool subsidy, general counsel, and re-appropriation of certain income

26 Employee Benefits Schedule

Provisions for employee benefits, including paid leave and vacation

29 Appraisal Review Board Provisions

Provisions relating to ARB Members and other appropriations

31 Capital Expenditures

List of capital items scheduled for acquisition

33 Estimated Cost Allocation to Taxing Units

List of taxing units allocated a portion of this budget and the estimated amount to be paid

DISTRICT OFFICIALS

Harris County Appraisal District Board of Directors 2021

MIKE SULLIVAN
Chairman

GLENN PETERS
Secretary

MARTINA LEMOND DIXON
Assistant Secretary

ANN HARRIS BENNETT
Member

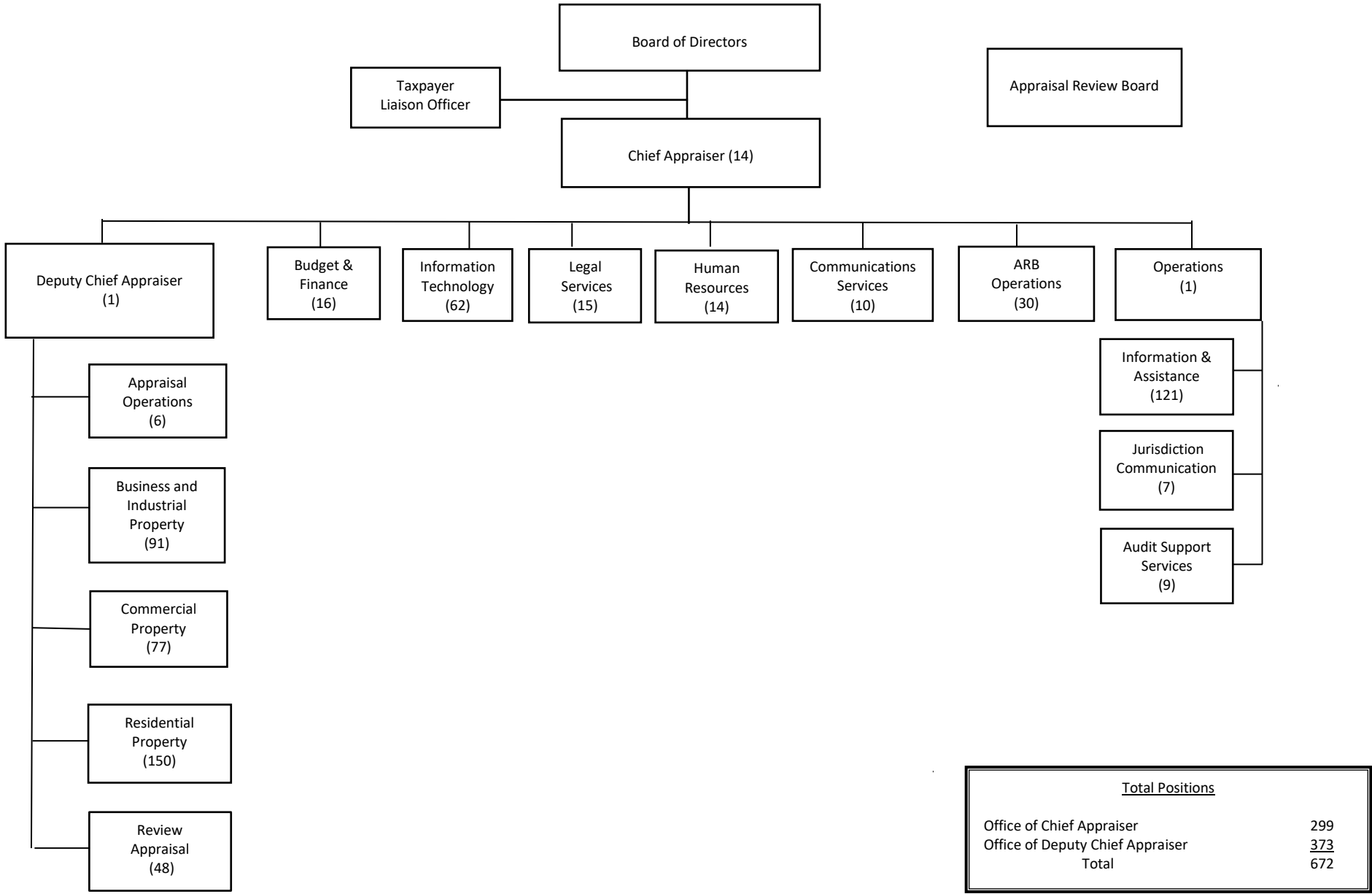
AL ODOM
Member

JIM ROBINSON
Member

ELIZABETH SANTOS
Member

Roland Altinger
Chief Appraiser

PLAN OF ORGANIZATION - 2022



FINANCIAL SECTION

2022 Budget – General Fund

Expenditure Summary and Method of Financing

General Fund – Line Item Expenditures by Department

2022 Budget with Comparisons

2022 BUDGET
GENERAL FUND

Account Number	Account Name	2022 Budget
	Number of Positions	672.0
	Part-time & Seasonal FTEs	10.9
<u>SALARIES, WAGES & RELATED</u>		
	Salaries & Wages	\$ 42,469,461
	Allowance for Career Development	225,000
	Less Salary Lapse	(2,233,032)
	Allowance for Salary Adjustment	1,200,000
	Reserve for Longevity	346,080
	Reserve for COLA	-
	Allowance for Career Ladder	95,000
3010	Net Salaries & Wages	\$ 42,102,509
3011	ARB Board Members	3,081,000.00
3015	Contract & Seasonal Labor	-
3020	Shift Differential	16,000.00
3030	Overtime	610,501.00
3040	Part-time & Seasonal Wages	369,810.00
TOTAL SALARIES, WAGES & RELATED		\$ 46,179,820
<u>EMPLOYEE BENEFITS & RELATED</u>		
3501	Group Health Insurance	\$ 9,701,281
3503	Workers' Compensation Insurance	100,925.00
3504	Group Life & LTD Insurance	149,551.00
3505	Group Dental Insurance	265,307.00
3506	Group Vision Insurance	72,576.00
3507	Unemployment Insurance	232,738.00
3520	Retirement	6,849,463.00
3526	FICA Medicare	669,609.00
3527	Social Security	212,606.00
TOTAL EMPLOYEE BENEFITS & RELATED		\$ 18,254,056
<u>OFFICE & FIELD OPERATIONS</u>		
4001	Office Supplies	\$ 168,725
4003	Office Equipment Maintenance	52,200
4011	Communications Services	449,844
4020	Copier Leases	139,000
4021	Copier Supplies & Maintenance	119,350
4030	Mapping Reproduction & Supplies	3,250
4040	Public Notice Advertising	18,000
4050	Security Services	189,000
4060	Field Travel, Vanpool & Other Exp	506,691
4070	Appraisal Supplies	13,940
4080	Vehicle Gasoline & Maintenance	34,000
4090	Records Storage & Supplies	25,000
4097	Employee Recognition Activities	60,000
4100	Postage, Mailing, & Handling Svcs.	3,153,042
4200	Professional Registration & Dues	90,000
4202	Seminars & Other Tuition	353,354

2022 BUDGET
GENERAL FUND

Account Number	Account Name	2022 Budget
4212	Education Travel & Expenses	242,195
4213	Books, Manuals & Publications	393,334
4501	Printing, Forms, & Stationery	28,400
4530	Paper, Copier & Printer	55,000
TOTAL OFFICE & FIELD OPERATIONS		<u>\$ 6,094,325</u>
 <u>COMPUTER OPERATIONS</u>		
5010	Minor Equipment-Infrastructure	\$ 775,000.0
5020	Hardware Maintenance & Support	173,800
5030	Software Maintenance & Support	1,226,220
5040	Computer Supplies	28,000
5050	Software Subscriptions	1,511,607
TOTAL COMPUTER OPERATIONS		<u>\$ 4,413,977</u>
 <u>PROFESSIONAL SERVICES</u>		
5510	Financial Auditing	\$ 60,300
5520	Legal Services	10,983,967
5525	Arbitration Fees & Services	600,000
5526	State Office of Admin Hearings	5,000
5530	Appraisal Services	1,541,490
5550	Other Professional Services	1,796,375
TOTAL PROFESSIONAL SERVICES		<u>\$ 14,987,132</u>
 <u>OFFICE SPACE, UTILITIES & RELATED</u>		
6100	Office Space	\$ 2,692,620
6150	Utilities	502,000
6200	Building & Fixture Maintenance	1,520,043
6400	Casualty & Liability Insurance	153,500
TOTAL OFFICE SPACE, UTILITIES & RELATED		<u>\$ 4,868,163</u>
 <u>FIXED ASSETS PURCHASES</u>		
6501	Capital Purchases	\$75,000
TOTAL FIXED ASSETS PURCHASES		<u>\$75,000</u>
TOTAL BUDGET		<u>\$ 94,872,473</u>

EXPENDITURE SUMMARY AND METHOD OF FINANCING
2022 BUDGET

<u>BUDGETED EXPENDITURES</u>	2021 BUDGET	2022 BUDGET	Variance	% Change
<u>Account Groups</u>				
Number of Positions	662.0	672.0	10.0	1.51%
Part-time & Seasonal FTEs	10.7	10.9	0.2	2.01%
Salaries, Wages & Related	44,266,298	46,179,820	1,913,522	4.32%
Employee Benefits	18,060,371	18,254,056	193,685	1.07%
Office & Field Operations	6,121,164	6,094,325	(26,839)	-0.44%
Computer Operations	4,577,862	4,413,977	(163,885)	-3.58%
Professional Services	15,059,706	14,987,132	(72,574)	-0.48%
Office Space, Utilities & Maint.	4,858,163	4,868,163	10,000	0.21%
Capital Expenditures	75,000	75,000	0	0.00%
TOTAL BUDGET	93,018,564	94,872,473	1,853,909	1.99%
 <u>FINANCING METHOD</u>				
Jurisdiction Allocations	92,518,564	94,372,473	1,853,909	1.99%
Interest Income	0	0	0	0.00%
Other Income	0	0	0	0.00%
Application of Restricted Funds	0	0	0	0.00%
Application of Unrestricted Funds				
General Fund	500,000	500,000	0	0.00%
Internal Service Fund	0	0	0	0.00%
TOTAL FINANCING METHOD	93,018,564	94,872,473	1,853,909	1.99%

GENERAL FUND - LINE ITEM EXPENDITURES BY DEPARTMENT
2022 BUDGET

Account Number	Account Name	TOTAL BUDGET	BOARD OF DIRECTORS	OFC CHIEF APPRAISER	DEP CHIEF APPRAISER
	Number of Positions	672.0	0.0	300.0	16.0
	Part-time & Seasonal FTEs	10.9	0.0	7.9	0.0
<u>SALARIES, WAGES & RELATED</u>					
	Salaries & Wages	\$42,469,461	\$0	\$19,561,857	\$22,907,604
	Allowance for Career Development	225,000	-	225,000	-
	Less Salary Lapse	(2,233,032)	-	(1,028,557)	(1,204,475)
	Allowance for Salary Adjustment	1,200,000	-	1,200,000	-
	Reserve for Longevity	346,080	-	154,500	191,580
	Allowance for Career Ladder	95,000	-	95,000	-
3010	Net Salaries & Wages	42,102,509	-	20,207,800	21,894,709
3011	ARB Board Members	3,081,000	3,081,000	-	-
3020	Shift Differential	16,000	-	16,000	-
3030	Overtime	610,501	-	499,501	111,000
3040	Part-time & Seasonal Wages	369,810	30,000	237,080	102,730
TOTAL SALARIES, WAGES & RELATED		\$46,179,820	\$3,111,000	\$20,960,381	\$22,108,439
<u>EMPLOYEE BENEFITS & RELATED</u>					
3501	Group Health Insurance	\$9,701,281	\$0	\$4,330,929	\$5,370,352
3503	Workers' Compensation Insurance	100,925	-	100,925	-
3504	Group Life & LTD Insurance	149,551	-	72,532	77,019
3505	Group Dental Insurance	265,307	-	118,441	146,866
3506	Group Vision Insurance	72,576	-	32,400	40,176
3507	Unemployment Insurance	232,738	51,300	80,998	100,440
3520	Retirement	6,849,463	-	3,321,948	3,527,515
3526	FICA Medicare	669,609	45,110	303,927	320,572
3527	Social Security	212,606	192,882	13,355	6,369
TOTAL EMPLOYEE BENEFITS & RELATED		\$18,254,056	\$289,292	\$8,375,455	\$9,589,309
<u>OFFICE & FIELD OPERATIONS</u>					
4001	Office Supplies	\$168,725	\$1,000	\$112,725	\$55,000
4003	Office Equipment Maintenance	52,200	-	52,200	-
4011	Communications Services	449,844	-	449,844	-
4020	Copier Leases	139,000	-	139,000	-
4021	Copier Supplies & Maintenance	119,350	-	119,350	-
4030	Mapping Reproduction & Supplies	3,250	-	3,250	-
4040	Public Notice Advertising	18,000	-	18,000	-
4050	Security Services	189,000	-	189,000	-
4060	Field Travel, Vanpool & Other Exp	506,691	3,000	87,250	416,441
4070	Appraisal Supplies	13,940	-	700	13,240
4080	Vehicle Gasoline & Maintenance	34,000	-	34,000	-
4090	Records Storage & Supplies	25,000	-	25,000	-
4097	Employee Recognition Activities	60,000	60,000	-	-
4100	Postage, Mailing, & Handling Svcs.	3,153,042	-	3,153,042	-
4200	Professional Registration & Dues	90,000	-	90,000	-
4202	Seminars & Other Tuition	353,354	16,000	298,064	39,290
4212	Education Travel & Expenses	242,195	3,800	159,735	78,660
4213	Books, Manuals & Publications	393,334	-	97,245	296,089
4501	Printing, Forms, & Stationery	28,400	-	28,400	-
4530	Paper, Copier & Printer	55,000	-	55,000	-
TOTAL OFFICE & FIELD OPERATIONS		\$6,094,325	\$83,800	\$5,111,805	\$898,720
<u>COMPUTER OPERATIONS</u>					
5009	Minor Equipment-Office & Field Operations	\$519,350	\$0	\$519,350	\$0
5010	Minor Equipment-Infrastructure	775,000	-	775,000	-
5020	Hardware Maintenance & Support	173,800	-	173,800	-
5030	Software Maintenance & Support	1,226,220	-	1,226,220	-

GENERAL FUND - LINE ITEM EXPENDITURES BY DEPARTMENT
2022 BUDGET

Account Number	Account Name	TOTAL BUDGET	BOARD OF DIRECTORS	OFC CHIEF APPRAISER	DEP CHIEF APPRAISER
5040	Computer Supplies	28,000	-	28,000	-
5050	Software Subscriptions	1,511,607	-	1,511,607	-
5070	Software Purchases	180,000	-	180,000	-
TOTAL COMPUTER OPERATIONS		\$4,413,977	\$0	\$4,413,977	\$0
<u>PROFESSIONAL SERVICES</u>					
5510	Financial Auditing	\$60,300	\$0	\$60,300	\$0
5520	Legal Services	10,983,967	10,983,967	-	-
5525	Arbitration Fees & Services	600,000	600,000	-	-
5526	State Office of Admin Hearings	5,000	5,000	-	-
5530	Appraisal Services	1,541,490	-	-	1,541,490
5550	Other Professional Services	1,796,375	5,000	1,759,375	32,000
TOTAL PROFESSIONAL SERVICES		\$14,987,132	\$11,593,967	\$1,819,675	\$1,573,490
<u>OFFICE SPACE, UTILITIES & RELATED</u>					
6100	Office Space	\$2,692,620	\$0	\$2,692,620	\$0
6150	Utilities	502,000	-	502,000	-
6200	Building & Fixture Maintenance	1,520,043	-	1,520,043	-
6400	Casualty & Liability Insurance	153,500	-	153,500	-
TOTAL OFFICE SPACE, UTILITIES & RELATED		\$4,868,163	\$0	\$4,858,163	\$0
<u>FIXED ASSETS PURCHASES</u>					
6501	Capital Purchases	\$75,000	\$0	\$75,000	\$0
TOTAL FIXED ASSETS PURCHASES		\$75,000	\$0	\$75,000	\$0
TOTAL BUDGET		\$94,872,473	\$15,078,059	\$45,624,456	\$34,169,958

2022 BUDGET WITH COMPARISONS
2021 BUDGET & 2020 ACTUAL

Account Number	Account Name	2020 ACTUAL	2021 BUDGET	2022 BUDGET
	Number of Positions	662	662	672
	Part-time & Seasonal FTEs	9	11	11
<u>SALARIES, WAGES & RELATED</u>				
	Salaries & Wages	\$ 38,201,243	\$ 41,098,144	\$ 42,469,461
	Allowance for Career Development	0	205,000	225,000
	Less Salary Lapse	0	(2,138,407)	(2,233,032)
	Allowance for Salary Adjustment	0	900,000	1,200,000
	Reserve for Longevity	0	340,930	346,080
	Reserve for COLA	0	-	-
	Allowance for Career Ladder	0	95,000	95,000
3010	Net Salaries & Wages	\$ 38,201,243	\$ 40,500,667	\$ 42,102,509
3011	ARB Board Members	2,422,304	2,781,000	2,781,000
3015	Contract & Seasonal Labor	0	-	-
3020	Shift Differential	345,276	16,000	16,000
3030	Overtime	149,980	605,501	610,501
3040	Part-time & Seasonal Wages	367,630	363,130	369,810
TOTAL SALARIES, WAGES & RELATED		\$ 41,486,435	\$ 44,266,298	\$ 46,179,820
<u>EMPLOYEE BENEFITS & RELATED</u>				
3501	Group Health Insurance	\$ 9,556,916	\$ 9,556,917	\$ 9,701,281
3503	Workers' Compensation Insurance	87,759	100,000	100,925
3504	Group Life & LTD Insurance	146,034	143,928	149,551
3505	Group Dental Insurance	261,357	261,357	265,307
3506	Group Vision Insurance	36,502	71,496	72,576
3507	Unemployment Insurance	97,268	169,010	232,738
3520	Retirement	8,670,424	6,920,864	6,849,463
3526	FICA Medicare	575,877	641,863	669,609
3527	Social Security	156,479	194,936	212,606
TOTAL EMPLOYEE BENEFITS & RELATED		\$ 19,588,615	\$ 18,060,371	\$ 18,254,056
<u>OFFICE & FIELD OPERATIONS</u>				
4001	Office Supplies	\$ 70,331	\$ 168,025	\$ 168,725
4003	Office Equipment Maintenance	40,364	52,200	52,200
4011	Communications Services	305,308	450,608	449,844
4020	Copier Leases	50,490	139,000	139,000
4021	Copier Supplies & Maintenance	83,247	119,350	119,350
4030	Mapping Reproduction & Supplies	434	3,250	3,250
4040	Public Notice Advertising	3,696	18,000	18,000
4050	Security Services	296,548	189,000	189,000
4060	Field Travel, Vanpool & Other Exp	145,069	510,141	506,691
4070	Appraisal Supplies	3,481	14,060	13,940
4080	Vehicle Gasoline & Maintenance	13,459	34,000	34,000
4090	Records Storage & Supplies	10,923	25,000	25,000
4097	Employee Recognition Activities	59,419	35,000	60,000
4100	Postage, Mailing, & Handling Svcs.	2,512,996	3,153,042	3,153,042
4200	Professional Registration & Dues	89,809	90,000	90,000
4202	Seminars & Other Tuition	114,388	375,404	353,354
4212	Education Travel & Expenses	49,642	278,225	242,195
4213	Books, Manuals & Publications	326,703	383,459	393,334
4501	Printing, Forms, & Stationery	10,403	28,400	28,400
4530	Paper, Copier & Printer	29,008	55,000	55,000
TOTAL OFFICE & FIELD OPERATIONS		\$ 4,215,719	\$ 6,121,164	\$ 6,094,325

2022 BUDGET WITH COMPARISONS
2021 BUDGET & 2020 ACTUAL

Account Number	Account Name	2020 ACTUAL	2021 BUDGET	2022 BUDGET
<u>COMPUTER OPERATIONS</u>				
5009	Minor Equipment-Office & Field Operatio	\$ 571,354	\$ 488,335	\$ 519,350
5010	Minor Equipment-Infrastructure	188,100	1,033,000	775,000
5020	Hardware Maintenance & Support	185,670	226,000	173,800
5030	Software Maintenance & Support	1,165,018	1,232,220	1,226,220
5040	Computer Supplies	0	28,000	28,000
5050	Software Subscriptions	1,475,378	1,402,807	1,511,607
5070	Software Purchases	52,344	167,500	180,000
TOTAL COMPUTER OPERATIONS		\$ 3,637,864	\$ 4,577,862	\$ 4,413,977
<u>PROFESSIONAL SERVICES</u>				
5510	Financial Auditing	\$ 73,101	\$ 60,300	\$ 60,300
5520	Legal Services	8,557,683	10,983,967	10,983,967
5525	Arbitration Fees & Services	404,450	600,000	600,000
5526	State Office of Admin Hearings	0	5,000	5,000
5530	Appraisal Services	1,511,399	1,558,564	1,541,490
5550	Other Professional Services	1,811,435	1,851,875	1,796,375
TOTAL PROFESSIONAL SERVICES		\$ 12,358,068	\$ 15,059,706	\$ 14,987,132
<u>OFFICE SPACE, UTILITIES & RELATED</u>				
6100	Office Space	\$ 2,544,136	\$ 2,692,620	\$ 2,692,620
6150	Utilities	303,166	502,000	502,000
6200	Building & Fixture Maintenance	1,802,910	1,520,043	1,520,043
6400	Casualty & Liability Insurance	153,222	143,500	153,500
TOTAL OFFICE SPACE, UTILITIES & RELATED		\$ 4,803,434	\$ 4,858,163	\$ 4,868,163
<u>FIXED ASSETS PURCHASES</u>				
6501	Capital Purchases	\$ 828,982	\$ 75,000	\$ 75,000
TOTAL FIXED ASSETS PURCHASES		\$ 828,982	\$ 75,000	\$ 75,000
TOTAL BUDGET		\$ 86,919,116	\$ 93,018,564	\$ 94,872,473

TEXAS PROPERTY TAX CODE SECTION

The following schedules are provided pursuant to Section 6.06(a) of the Texas Property Tax Code:

Schedule of Positions

Schedule of Appraisal Review Board Members

Salary Schedule and Provisions

General Provisions

Employee Benefits Schedule – General & Special Provisions

Appraisal Review Board Provisions

Capital Expenditures

2022 Estimated Cost Allocation to Taxing Units

SCHEDULE OF APPRAISAL DISTRICT POSITIONS - 2022 BUDGET

Position	Salary Grade	Number of Positions
Accounts Examiner I	P2	3
Accounts Examiner II	P2	1
Accounts Examiner III	P2	1
ACIO - Applications	M	1
ACIO - Sys & Infra	M	1
Admin Assist I - ASSD	A	1
Admin Assist I - BIPD	A	1
Admin Assist II - HR	A	1
Admin Assist II - IAD	A	1
Admin Assist II - OCA	A	1
Admin Assistant II - ARB Ops	A	1
Admin Tech I - BFD	A	1
Admin Tech I - CPD	A	6
Admin Tech I - DLS	A	1
Admin Tech I - Doc Cont	A	3
Admin Tech I - RPD - Act Res	A	2
Admin Tech II - BIPD	A	5
Admin Tech II - CPD	A	1
Admin Tech II - DLS	A	2
Admin Tech II - Doc Proc	A	1
Admin Tech II - RAD	A	4
Admin Tech II - RPD - Act Res	A	1
Admin Tech III - Ag	A	1
Admin Tech III - BIPD	A	1
Admin Tech III - CPD	A	4
Admin Tech III - JURIS	A	2
Admin Tech III - Mailroom	A	1
Admin Tech III - RPD	A	1
Admin Tech III - RPD - Act Res	A	4
Admin Tech IV - COMM	A	1
Admin Tech IV - CPD	A	1
Admin Tech IV - CPD - Val	A	1
Admin Tech IV - Doc Proc	A	1
Admin Tech IV - RAD	A	3
Admin Tech Spec I - BIPD	A	4
Admin Tech Spec I - IAD	A	1
Admin Tech Spec I - New Sub	A	2
Admin Tech Spec I - Owner Res	A	7
Admin Tech Spec I - Prob Res	A	5
Admin Tech Spec II - BIPD	A	4
Admin Tech Spec II - New Sub	A	3
Admin Tech Spec II - Owner Res	A	1
Admin Tech Spec II - Prob Res	A	1
Admin Tech Spec II - Protest	A	4
Admin Tech Spec III - Agent	A	3
Admin Tech Spec III - BIPD	A	3
Admin Tech Spec III - New Sub	A	2
Admin Tech Spec III - Owner Res	A	2
Admin Tech Spec III - Prob Res	A	5
Admin Tech Spec III - Protest	A	2
Admin Tech Spec IV - BIPD	A	3

SCHEDULE OF APPRAISAL DISTRICT POSITIONS - 2022 BUDGET

Position	Salary Grade	Number of Positions
Admin Tech Spec IV - New Sub	A	3
Admin Tech Spec IV - Owner Res	A	1
Admin Tech Spec IV - Prob Res	A	1
Admin Tech Spec V - BIPD	A	1
Admin Tech V - Mailroom	A	1
Administrator I - Appr Ed	P2	1
Administrator I - COMM	P2	1
Administrator I - DLS	P2	1
Administrator I - Systems	T	1
Administrator II	P2	1
Administrator II - HRMS	P2	1
Administrator II - IAD - Operations	P2	1
Administrator II - Systems	T	1
Administrator III - Benefits	P2	1
Administrator III - COMM	P2	1
Administrator III - Database	T	1
Administrator III - Systems	T	1
Analyst I - Applications	T	1
Analyst I - GIS	T	1
Analyst I - Systems	T	1
Analyst II - GIS	T	2
Analyst II - Software	T	4
Analyst II - Tech Supp	T	1
Analyst III - GIS	T	1
Analyst III - IT	T	1
Analyst III - Software	T	2
Analyst IV - GIS	T	1
Appraiser I - BIPD	P2	12
Appraiser I - CPD	P2	9
Appraiser I - Exemptions	P2	2
Appraiser I - RPD	P2	46
Appraiser I - RPD - Act Res	P2	2
Appraiser II - BIPD	P2	2
Appraiser II - CPD	P2	7
Appraiser II - Exemptions	P2	2
Appraiser II - RPD	P2	11
Appraiser II - RPD - Act Res	P2	1
Appraiser III - BIPD	P2	7
Appraiser III - CPD	P2	2
Appraiser III - Exemptions	P2	2
Appraiser III - RPD	P2	31
Appraiser III - RPD - Act Res	P2	2
Appraiser IV - CPD	P2	4
Appraiser IV - CPD - Ag	P2	3
Appraiser IV - RAD - Arb	P2	7
Appraiser IV - RPD	P2	2
Appraiser IV - RPD - Act Res	P2	6
Assoc Chief Appraiser - Appr Ops	E	1
Assoc Chief Appraiser - BIPD	E	1
Assoc Chief Appraiser - CPD	E	1

SCHEDULE OF APPRAISAL DISTRICT POSITIONS - 2022 BUDGET

Position	Salary Grade	Number of Positions
Assoc Chief Appraiser - RAD	E	1
Assoc Chief Appraiser - RPD	E	1
Captain	S	1
Chief Appraiser	E	1
Chief Communications Officer	E	1
Chief Financial Officer	E	1
Chief Human Resources Officer	E	1
Chief Information Officer	E	1
Chief Legal Officer	E	1
Chief of Hearings	E	1
Chief of Operations	E	1
Consulting Appraiser I	P2	4
Consulting Appraiser II	P2	4
Consulting Appraiser III	P2	1
Consulting Appraiser IV	P2	1
Controller	M	1
Coordinator I - ARB Hearings	P1	1
Coordinator I - JURIS	P1	1
Coordinator II - Appr Ed	P1	1
Coordinator II - ARB Ops	P1	1
Coordinator II - ARB Support	P1	1
Coordinator II - HR	P1	1
Coordinator II - HRMS	P1	1
Coordinator II - IAD	P1	1
Coordinator II - JURIS	P1	1
Coordinator II - JURIS	P1	1
Coordinator II - PIA	P1	1
Coordinator IV - IT	P1	1
Cust Serv Re Spec II - PIA	A	2
Cust Serv Res Spec I - COMM	A	1
Cust Serv Res Spec II - COMM	A	2
Cust Serv Res Spec III - COMM	A	1
Cust Serv Res Spec IV - COMM	A	1
Cust Serv Spec I - ARB Hearings	A	9
Cust Serv Spec I - CS Ctr	A	14
Cust Serv Spec I - CS Intake	A	4
Cust Serv Spec II - ARB Hearings	A	2
Cust Serv Spec II - ARB Support	A	7
Cust Serv Spec II - CS Ctr	A	7
Cust Serv Spec II - CS Intake	A	1
Cust Serv Spec III - ARB Hearings	A	2
Cust Serv Spec III - ARB Support	A	1
Cust Serv Spec III - CS Intake	A	3
Cust Serv Spec IV - CS Ctr	A	2
Cust Serv Spec IV - CS Intake	A	1
Deputy Chief Appraiser	E	1
Developer II - Bus Intel	T	1
Developer II - Software	T	5
Developer III - Software	T	2
Director - GIS	M	1

SCHEDULE OF APPRAISAL DISTRICT POSITIONS - 2022 BUDGET

Position	Salary Grade	Number of Positions
Director Sr - ARB OPS	M	1
Director Sr - ASSD	E	1
Director Sr - IAD	E	1
Director Sr - JURIS	E	1
Engineer I - Info Security	T	1
Engineer I - Network	T	1
Engineer III - Network	T	1
Executive Assistant	A	1
Executive Project Advisor	P2	1
Exemptions Specialist I	A	6
Exemptions Specialist II	A	6
Exemptions Specialist III	A	3
Exemptions Specialist IV	A	1
HR Generalist II	P2	1
Internal Auditor III	P2	1
Legal Counsel I	P2	2
Legal Counsel II	P2	5
Lieutenant	S	1
Lieutenant - Sec Training	P1	1
Manager - Acct Maint	M	1
Manager - Agricultural	M	1
Manager - App Dev	M	1
Manager - ARB Hearings	M	1
Manager - Arbitration	M	1
Manager - ASSD	M	1
Manager - BIPD	M	1
Manager - BIPD - Field	M	1
Manager - CPD	M	1
Manager - CPD - Valuation	M	3
Manager - Cust Serv	M	1
Manager - DLS	M	1
Manager - Doc Proc	M	1
Manager - Finance	M	1
Manager - Lit - Consulting	M	2
Manager - Purchasing	M	1
Manager - Records Retention	M	1
Manager - RPD - Field	M	2
Manager - RPD - Valuation	M	2
Manager - Security	M	1
Manager - Support	M	1
Manager - Sys Supp	M	1
Manager - Valuation - Ind	M	2
Manager - Valuation - Pers Prop	M	2
Manager App Supp	M	1
Manager Sr - CPD - Field	M	1
Manager Sr - CPD - Valuation	M	1
Manager Sr - HR	M	1
Manager Sr - Litigation	M	1
Manager Sr - RPD - Act Res	M	1
Manager Sr - RPD - Field	M	1

SCHEDULE OF APPRAISAL DISTRICT POSITIONS - 2022 BUDGET

Position	Salary Grade	Number of Positions
Manager Sr - RPD - Valuation	M	1
Manager Sr - Talent Management	M	1
Manager Sr - Valuation - Ind	M	1
Manager Sr - Valuation - Pers Prop	M	1
Paralegal II	P1	1
Project Analyst I - AOPS	P2	2
Project Analyst I - ARB Ops	P2	1
Project Analyst II - AOPS	P2	1
Project Analyst II - CPD	P2	1
Project Analyst II - RAD	P2	1
Project Analyst III - AOPS	P2	2
Project Analyst III - BIPD	P2	1
Project Analyst III - CPD	P2	1
Project Manager II	P2	1
Recruiter III	P2	1
Research Associate I - RPD	P2	1
Research Associate II - Arb	P2	1
Research Associate II - Lit Res	P2	2
Research Associate III - Lit - Res	P2	2
Research Associate III - RPD	P2	2
Security Officer I	P1	3
Security Officer II	P1	2
Senior Financial Officer	P2	1
Senior Program Data Design Analyst	T	1
Senior Systems Design Analyst	T	1
Specialist I - GIS	T	5
Specialist I - Payroll	P1	1
Specialist I - Tech Supp	T	3
Specialist II - Accounting	P1	1
Specialist II - Doc Cont	P1	1
Specialist II - GIS	T	5
Specialist II - Payroll	P1	1
Specialist II - Purchasing	P1	2
Specialist II - Tech Supp	T	1
Specialist III - Accounting	P1	1
Specialist III - Tech Supp	T	2
Specialist IV - GIS	T	1
Specialist IV - Accounting	P1	1
Supervisor - Agent	S	1
Supervisor - Arbitration	S	1
Supervisor - BIPD	S	2
Supervisor - BIPD - Field	S	2
Supervisor - CPD - Field	S	3
Supervisor - CS Ctr	S	1
Supervisor - CS Intake	S	1
Supervisor - Doc Cont	S	1
Supervisor - GIS	S	1
Supervisor - Hmstd Exempt	S	1
Supervisor - JURIS	S	1
Supervisor - Owner Res	S	1

SCHEDULE OF APPRAISAL DISTRICT POSITIONS - 2022 BUDGET

Position	Salary Grade	Number of Positions
Supervisor - Paralegal	S	1
Supervisor - Prob Res	S	1
Supervisor - Protest	S	1
Supervisor - RAD	S	1
Supervisor - RPD - Act Res	S	1
Supervisor - RPD - Field	S	8
Supervisor - Shared Serv	S	1
Supervisor - Ttl Exemptions	S	1
Supervisor Sr - CPD - Field	S	1
Supervisor Sr - Payroll	S	1
Supervisor Sr - RPD - Act Res	S	1
Supervisor Sr - RPD - Field	S	4
Technical Writer I - HR	P2	1
Technologist I - HR	P2	1
Technologist II - COMM	P2	1
Testifying Appraiser I	P2	3
Testifying Appraiser II	P2	7
Testifying Appraiser III	P2	2
Val Analyst I - BIPD - Pers Prop	P2	10
Val Analyst II - BIPD - Ind	P2	6
Val Analyst II - BIPD - Pers Prop	P2	4
Val Analyst II - CPD	P2	13
Val Analyst II - RPD	P2	6
Val Analyst III - BIPD - Ind	P2	4
Val Analyst III - BIPD - Pers Prop	P2	4
Val Analyst III - CPD	P2	5
Val Analyst III - RPD	P2	7
Val Analyst IV - BIPD - Pers Prop	P2	2
Val Analyst IV - CPD	P2	6
Val Analyst IV - RPD	P2	2
Val Analyst IV - BIPD - Ind	P2	4
		672

SCHEDULE OF APPRAISAL REVIEW BOARD MEMBERS
2022 BUDGET

Position	Salary Group	Number of Positions
ARB Member	per diem	<u>190</u>
TOTAL		<u>190</u>

2022 SALARY SCHEDULE AND PROVISIONS

A. Classified Positions Salary Schedule.

Group Name	Group	Minimum	Maximum
Administrative	A	\$25,526	\$92,669
Para-professional	P1	\$35,443	\$94,106
Professional	P2	\$46,688	\$143,986
Technical	T	\$37,371	\$133,065
Supervisor	S	\$50,383	\$107,640
Manager	M	\$66,022	\$136,164
Executive	E	\$93,119	\$378,988

B. Schedule of Positions Outside the Classification Schedule.

Chief Appraiser \$300,510

- C. It is expressly provided that the chief appraiser is authorized to grant salary adjustment increases to district employees according to the district’s guidelines under the Salary Adjustment Program. The maximum shall not exceed the amount specifically budgeted as “Allowance for Salary Adjustments”.
- D. The chief appraiser is authorized to award quality service incentives, disbursed as a single payment, to employees according to the district’s guidelines under the Quality Service Incentive Program.
 - 1. This is in recognition of the employee’s high level of performance, which must be supported by documentation;
 - 2. Funding for such incentives will be made only from the overall limits specified under Paragraph C, above; and,
 - 3. A quality service incentive is a one-time payment and does not increase the salary level for the following year.
- E. The chief appraiser is authorized to award a quality service incentive and a salary adjustment increase concurrently.
- F. The chief appraiser may authorize additional salary adjustments according to the district’s guidelines under the Salary Adjustment Program. A salary adjustment may be warranted when there are changes to an employee’s duties and responsibilities, whether or not such changes result in title change, promotion/progression, to address pay equity, or in response to market conditions.
- G. The chief appraiser may substitute other classified position titles for those listed in this Schedule of Positions when the chief appraiser finds that such reclassifications are necessary for effective performance of the district’s responsibilities. The chief appraiser is further authorized to reassign an employee serving in a classified position to another classified position or to move the employee to another salary within the employee’s salary grade as necessary to maintain desirable salary relationships.

- H. Professional Development Program. The chief appraiser is authorized to award achievement pay according to the district's guidelines under the Professional Development Program.
- I. TDLR Career Ladder Program. The chief appraiser is authorized to promote staff upon reaching levels I, II, III and IV Property Tax Professional Appraiser designations with the Texas Department of Licensing and Regulation (TDLR) and satisfaction of such other requirements as the chief appraiser may impose according to the district's guidelines under the Career Ladder Program.
- J. The chief appraiser is authorized to pay a full-time employee who is a state approved instructor a stipend if the employee teaches state certification courses during a calendar year per the Instructor Stipend Program.
- K. The chief appraiser is authorized to pay salaried exempt employees straight time for compensatory time worked during periods when paid leave is restricted or when the chief appraiser finds it essential for effective performance of critical functions.
- L. The chief appraiser is authorized to pay vacation or compensatory leave hours or both, in excess of the maximum hours that carry over to the next year, limited to unspent budgeted funds.
- M. The chief appraiser is authorized to pay a full-time employee a stipend of up to \$500 for translation services per calendar year to ensure quality services to the limited English proficient populations.

GENERAL PROVISIONS

A. Mileage Allowance.

1. Use of Privately Owned Vehicles. Employees, board members, or persons assigned to the district by another agency under contract who use their privately owned vehicles on official district business are authorized reimbursement at the rate authorized by the Internal Revenue Service as the standard mileage deduction rate (currently \$0.56/mile for 2021).
2. Idling Allowance. Appraisers performing as group leaders, or who are assigned to pre-review, review and quality control functions are authorized an "idling allowance" of \$1.00 per hour in addition to reimbursement for actual mileage as provided in the district's appraisal manual.

B. Expense Allowance. The following listed positions are authorized an expense allowance in lieu of a vehicle allowance, in-district mileage, and incidental in-district expenses at the monthly rate indicated:

Chief Appraiser	\$850
Deputy Chief Appraiser	\$550

C. Uniform Cleaning Reimbursement. Commissioned security officers who are required to regularly wear district-provided uniforms are entitled to reimbursement for the actual cost of professional uniform cleaning in an amount not to exceed \$45.00 per month.

D. Cell Phone Allowance. In lieu of providing a district-owned cellular phone to an employee whose duties require it, the chief appraiser is authorized to pay a monthly cellular phone allowance as follows: \$10 to \$45 per month, depending on the number of minutes of business use projected, for basic cellular service, and an additional \$15 to \$45 per month for data services if the chief appraiser determines that data services are appropriate. An employee who receives a cellular phone allowance under this provision must, at his or her own expense, obtain equipment and cellular services meeting minimum specifications that are approved by the chief appraiser or his designee. The equipment and service must be in working order at all times during the period for which an allowance is paid. The total amount paid under this provision may not exceed the amount allocated in this budget for cellular phone and data services.

E. Travel Expenses.

1. Non-overnight Travel.

- a. The chief appraiser, a member of the board of directors, a district employee, or a person assigned to the district by another agency under contract who has been designated to represent the chief appraiser or a board member, or a district employee who is traveling with the chief appraiser or a board member may receive reimbursement of actual expenses for meals when traveling outside the district's boundaries. The meal receipts must be attached to the travel expense report if the amount claimed for a meal exceeds \$11.00.

- b. Other employees may be reimbursed for meal expenses incurred on a day the employee conducts official business outside the district's boundaries for no fewer than six consecutive hours on the day the expenses are incurred in an amount not to exceed \$56 per day. However, the maximum reimbursement for breakfast may not exceed \$14.00, exceed \$16 for lunch, or exceed \$26 for dinner. Meal receipts must be attached to the travel expense report if the amount claimed for a meal exceeds \$14.00.

2. Overnight Travel.

- a. An employee may be reimbursed on a per diem basis for each day of travel not to exceed the maximum meals and lodging rates based on the federal travel regulations issued by the United States General Services Administration. In lieu of being reimbursed on a per diem basis, a person may elect to be reimbursed in the manner provided for in subsection 2.b. of this section.
- b. Employees and members of the board of directors who elect to do so, may be reimbursed for actual expenses of lodging at a commercial lodging establishment and an allowance for meals in an amount not to exceed the maximum per diem allowance authorized for that locality in the current federal travel regulations unless the chief appraiser determines, in advance of the travel, that local conditions necessitate a change in the lodging rate for a particular location. An employee may reduce the maximum meal reimbursement rate for a locality and use the reduction to increase the maximum lodging reimbursement rate for the locality, and may also be reimbursed for authorized incidental expenses. In calculating the applicable meal allowance for a particular locality, the amounts allowed for the first and last day of travel are reduced to 50% of the daily federal rate if the person begins travel after 1 p.m. on the first day or returns and ends travel before 1 p.m. on the last day.
- c. The chief appraiser, a district employee who is traveling with the chief appraiser or as an official representative of the chief appraiser may receive reimbursement for the actual expenses for meals, lodging, and incidental expenses authorized by this section not to exceed twice the maximum per diem allowance authorized for that locality in the current federal travel regulations.
- d. A person authorized to be reimbursed for overnight travel expenses may receive reimbursement for the person's actual expenses for meals and lodging when traveling outside the continental United States.
- e. Persons who are authorized to claim actual expenses and elect to do so must provide lodging and meal receipts with their travel expense report. An employee who claims expenses on a per diem basis must submit lodging receipts with the travel expense report.
- f. Allowable incidental expenses include taxes levied on lodging, taxi fare, airport limousine service, airport or other parking charges, and business-related telephone calls and/or reasonable internet connection charges. Receipts for incidental expenses must be attached to the travel expense report.

3. Transportation Expenses.
 - a. Employees and board members who travel outside the district by personal auto will be reimbursed for mileage at the same rate used for in-district mileage. Travel must be by the most direct route. If two or more employees are attending the same business function, they should travel together if possible to minimize mileage expense. A person's total mileage reimbursement for a trip may not exceed the cost of round trip air travel by coach or economy class. The chief appraiser may require an employee traveling outside the district to use a district-owned vehicle instead of the employee's personal vehicle or other form of conveyance.
 - b. Persons who travel by air must fly coach or economy class. All flight arrangements should be made through the district's travel coordinator in the Office of Chief Appraiser.
4. Purchase of Alcoholic Beverages Prohibited. A person who travels on official business may not claim reimbursement from district funds for the purchase of alcoholic beverages.
5. Completion of Travel Expense Reports. After completion of authorized out-of-district travel, the person may not be reimbursed for travel expenses until the person submits a written travel report on the form prescribed by the chief appraiser. The form must clearly outline the official purpose of the travel and summarize, on a daily basis, the duties performed and expenses incurred or per diem claimed.
- F. Reappropriations. Monies received by the district as payment for copying charges are reappropriated to the district to offset the cost of making such copies. Monies received by the district under a Grant or Interlocal Contract are appropriated to the district to pay the cost of conducting the activity or activities authorized by such Grant or Contract. To the extent penalties may be imposed under any section of the Tax Code, penalty monies actually received are reappropriated to the district to offset the cost of operations, less any amounts required by law to be remitted to the appropriate taxing units.
- G. Vanpool Subsidy. The district is a member of the METRO STAR Vanpool program. Employees who participate are authorized a monthly subsidy of \$35.00. Participation is limited to an appropriation of \$50,000.
- H. Employee Recognition Activities. There is appropriated the sum of \$60,000 to be used for service awards and other employee recognition activities as approved by the board of directors.
- I. General Counsel. Pursuant to §6.05(j), Property Tax Code, the board may employ a general counsel to the district to serve at the will of the board. The general counsel shall provide counsel directly to the board and perform other duties and responsibilities as determined by the board. The general counsel is entitled to compensation as authorized by the board and funds are provided in Account 5520 - Legal Services.

EMPLOYEE BENEFITS SCHEDULE
GENERAL & SPECIAL PROVISIONS

- A. Health, Dental and Vision Benefits. The district provides health, dental and vision benefits for all full-time regular employees. New employees are covered on the first day of the month following a 30-day waiting period. Under the district's Flexible Benefits Plan, employees may select from a variety of coverage, but must select basic health coverage. The cost of coverage selections under the plan, which exceeds the provided allowance, is borne by the employee. The board of directors determines the amount of the allowance for employees and retirees when health, dental and vision contracts are renewed near the end of the year. Eligible retirees may continue coverage under the district's health plan until age 65 or eligible for Medicare. Retirees eligible for Medicare may enroll in a Medicare Supplement Plan offered by the Texas Association of Counties.
- B. Life and Disability Insurance. The district also provides life and disability insurance to all full-time regular employees. The cost of life and disability insurance for the employee is paid by the district. Employees may purchase additional life, accidental death and AFLAC insurance for themselves and their dependents under the Flexible Benefits Plan. Retirees are not eligible for coverage under the life and disability plans.
- C. Texas County & District Retirement System (TCDRS). This budget provides funding for the employee retirement plan. The employee contribution rate is 7% of salary and the district contribution rate is composed of a TCDRS actuarial determination plus an amount for an annuitant COLA if authorized by the board of directors, and the supplemental death benefit component. The TCDRS Supplemental Death Benefits Fund provides for a lump-sum death benefit payment to the beneficiary of a deceased employee-member equal to a year's salary in addition to a return of the deceased's personal deposits and interest earnings or a Deferred Service Retirement pension benefit. Upon the death of a retired member, the beneficiary is provided a lump-sum payment equal to \$5,000.
- D. Workers' Compensation Insurance. All full-time regular and part-time employees, and members of the board of directors and appraisal review board are protected with workers' compensation insurance. This budget provides coverage through participation in the Texas Municipal League Intergovernmental Risk Pool.
- E. Unemployment Insurance. The district provides unemployment insurance for all district employees.
- F. Social Security. District employees do not participate in the federal Old Age, Survivors, and Disability Insurance (OASDI) program. Part-time employees who are not members of the Texas County & District Retirement System are required to contribute to Social Security. This budget provides for the employer's matching amount.
- G. Federal Medicare Coverage. Most district employees participate in the Medicare portion of the Federal Insurance Contribution Act (Social Security). Employees contribute to this program at a rate of 1.45% of wages paid. Funding is provided in this budget for the employer's matching amount.

- H. Longevity Pay. All full-time regular employees, beginning with the first pay period after their first year of service with the district, are entitled to longevity pay calculated on the basis of \$5.00 per month per year of service, not to exceed \$150.00 per month. Employees returning to employment with the district after a break in service of less than five years are not entitled to longevity pay until after completing one year of continuous service. After the one-year waiting period, the employee's prior service of whole years is included in the calculation of longevity pay.
- I. Sick Leave. All full-time regular employees are entitled to sick leave subject to the following conditions:
1. An employee will earn sick leave entitlement beginning with the first day of employment with the district and ending on the last day of duty. Sick leave entitlement shall be earned at the rate of 3.6920 hours per regular pay period, not to exceed 12 days per year, and shall accumulate with the unused amount of such leave carried forward each pay period. Unpaid time does not earn sick leave.
 2. Sick leave may be taken any time after accrual, subject to the terms set forth in the district's sick leave policy.
 3. An employee who resigns, is dismissed, or separated from district employment may not be paid for unused sick leave, but the estate of a district employee who dies while employed by the district shall be paid one-half of the employee's unused sick leave, or for 80 hours of sick leave, whichever is less.
- J. Employee Vacations. All full-time regular employees are entitled to vacation leave. Such entitlement is calculated on 26 pay periods per year in accordance with the following schedule:

<u>Years of District Service</u>	<u>Hours Earned Per Pay Period</u>	<u>Maximum Hours That Carry Over To Next Year</u>
First 2 years	3.23	168
2 to under 5 years	3.69	288
5 to under 10 years	4.15	324
10 to under 15 years	4.61	360
15 to under 20 years	5.53	432
20 to under 25 years	6.46	504
25 to under 30 years	7.38	576
30 or more years	8.30	647

Vacation with pay may not be granted until the employee has had continuous employment with the district for six months, although credit will be earned during that period. The chief appraiser may authorize additional unpaid vacation leave as a supplement to vacation with pay. An employee who resigns, is dismissed, or separated from district employment is entitled to be paid for all vacation time duly accrued at the time of separation, provided the employee has had continuous employment with the district for six months. For an employee who has a break in service, total HCAD employment is calculated in the same manner as with longevity pay. After a one-year waiting period, the employee's prior service of whole years is included in the calculation of vacation hours.

The chief appraiser may grant vacation accrual to an experienced full-time employee hired at the level of manager or above according to the district's guidelines on Vacation Accrual for Experienced New Employees. This is granted to new employees with minimum 10+ years of proven relevant professional years of experience after satisfactorily completing one year of service. This does not apply to temporary, part-time or seasonal employees.

K. Emergency Leave.

1. The chief appraiser may grant emergency leave of up to three working days to a full-time regular employee because of a death of the employee's spouse, parent, step-parent, child, step-child, brother, sister, grandparent, grandchild, spouse's parent, spouse's children, father-in-law, mother-in-law, brother-in-law, sister-in-law, son-in-law or daughter-in-law. The chief appraiser may grant leave for any other purpose that justifies emergency leave.
2. The Chief Appraiser may grant paid emergency leave of up to fourteen work days per occurrence for an emergency leave as a result of a pandemic illness or an event declared a disaster.

L. Other Paid Leaves. Full-time regular employees of the district are entitled to paid leaves for holidays, military duty, and jury duty in accordance with the district's policy on such leaves.

APPRAISAL REVIEW BOARD PROVISIONS

The Appraisal Review Board of Harris County (ARB) is authorized by Section 6.41 of the Texas Property Tax Code as an entity separate from the Harris County Appraisal District. The Code contains provisions about the separation of the two entities, and requires the board of directors to fund certain activities of the appraisal review board. ARB members are not employees of the district and are not eligible for appointment to the ARB if ever employed by the district. Other restrictions apply.

A. Appraisal Review Board Member Per Diem and Duties and Per Diem of ARB Officers.

1. ARB members are compensated at a flat per diem rate for each full day or half day of service on the appraisal review board that equals or exceeds eight hours, exclusive of lunch. A full day is defined as greater than four hours, exclusive of lunch. A half day is defined as less than four hours, exclusive of lunch. ARB members attending ARB meetings will receive half day per diem. The per diem rate for such members shall be paid as follows:

Years of Board Service	Full Day Per Diem	Half Day Per Diem
Tier 1 - 1st or 2nd Year	\$180 per full day	\$90 per half day
Tier 1 - ALG Leader	\$190 per full day	\$95 per half day
Tier 2 - 3rd or 4th Year	\$195 per full day	\$98 per half day
Tier 2 - ALG Leader	\$205 per full day	\$103 per half day
Tier 3 - 5th Year or more	\$215 per full day	\$107 per half day
Tier 3 - ALG Leader	\$225 per full day	\$112 per half day

The board of directors may provide a per diem of up to \$240 per full day for the chairman and \$230 for the secretary of the ARB. Service shall mean sitting as a member of a panel, participating at a meeting of the full board, or attending training required by law or approved by the board of directors. The board of directors may provide that service for an officer or member of the ARB includes such other activities as the board may prescribe. The chairman of the appraisal review board determines panel and training schedules for ARB members in consultation with the ARB administrator.

2. A member must serve more than four hours, exclusive of lunch, and be discharged for the day by ARB Support personnel or by the ARB Executive office to receive the full day per diem. It is anticipated that members will serve the time required to properly discharge their obligations. For service of four hours or less, a member shall receive the half day per diem. Regardless of the number of hours served in excess of eight in a 24-hour period, a member will not be compensated at more than the full day per diem rate specified above.

- B. Appropriation for ARB Member Per Diem and Related Items
 - 1. Appropriation for ARB member per diem compensation is \$3,081,000.
 - 2. Appropriation for ARB member coverage for Unemployment Insurance is \$51,300.
 - 3. Appropriation for the matching portion of OASDI and FICA, is \$237,992.
- C. Appropriation for Appraisal Review Board Attorney. The Appraisal Review Board shall use the services of the county attorney for legal counsel. In the event the county attorney is unable or declines to represent the board in a lawsuit to which the board is made a party, the board may employ and compensate private counsel, subject to a total appropriation of \$5,000.
- D. Appropriation for Clerical Assistance. The appraisal office provides clerical assistance to the appraisal review board, including assisting the board with the scheduling and arranging of hearings. The appropriation for clerical assistance appears elsewhere in this budget.
- E. Appropriation for Texas Comptroller ARB Training. The Property Tax Code provides for the Texas State Comptroller to provide mandatory training of ARB members. The amount of \$12,500 is appropriated for that purpose.
- F. Appropriation for TALCB Licensed Appraiser Instruction. The ARB may contract with a Texas Appraiser Licensing and Certification Board (TALCB) licensed appraiser to instruct the members of the appraisal review board on valuation methodology if an appropriation for the instruction is provided. The amount of \$3,500 is appropriated for that purpose.
- G. A member of the board of directors, the chief appraiser, or any other employee of the district may not communicate with a member of the appraisal review board about a course provided by the Comptroller or any other matter presented or discussed in training. In addition, the Property Tax Code prohibits communication with the appraisal review board by an officer or employee of a taxing unit or by an attorney who represents or whose law firm represents the appraisal district or a taxing unit that participates in the appraisal district.

2022 CAPITAL EXPENDITURES

ORG	ACCT	ITEM	QTY	NEW (N) REPL (R)	UNIT COST	TOTAL COST
8005	6501	Servers, High End	3	R	25,000	75,000
						<u>\$75,000</u>

2022 ESTIMATED COST ALLOCATION TO TAXING UNITS

The Harris County Appraisal District is funded by the taxing units it serves. As provided in Section 6.06(d), Tax Code, "(E)ach taxing unit participating in the district is allocated a portion of the budget equal to the proportion that the total dollar amount of property taxes imposed in the district by the unit for the tax year in which the budget proposal is prepared bears to the sum of the total dollar amount of property taxes imposed in the district by each participating unit for that year."

Section 6.06(d), Tax Code, requires "(E)ach taxing unit shall pay its allocation in four equal payments to be made at the end of each calendar quarter, and the first payment shall be made before January 1 of the year in which the budget takes effect." It has been the practice of the Harris County Appraisal District to invoice the taxing units for their quarterly payments approximately 45 days prior to the due date. Since the first quarter billing for 2021 will be prepared and delivered on or about November 15, 2020, and before the time some 2020 tax rates have been determined or received, the first quarter 2020 will be invoiced using incomplete information. The second quarter invoice will reflect the necessary corrections.

This estimate is prepared in May 2021 using 2020 tax rates and levies.

Jur No.	Taxing Unit	Tax Year	Taxable Value as of 4/9/2021	Tax Rate	Total Levy	Frozen Levy Loss	Adjusted Levy	Allocation Ratio	2022 Budget Allocation
<u>SCHOOL DISTRICTS</u>									
001	HOUSTON ISD	2020	197,656,082,055	1.13	2,239,641,066	61,128,631	2,178,512,435	0.16908829876	15,957,281
002	DEER PARK ISD	2020	11,426,000,565	1.35	154,205,304	1,448,004	152,757,300	0.01185647214	1,118,925
003	WALLER ISD	2020	2,365,666,048	1.37	32,324,461	254,438	32,070,023	0.00248915982	234,908
004	CYPRESS FAIRBANKS ISD	2020	57,785,119,589	1.36	783,277,296	14,361,188	768,916,108	0.05968050238	5,632,197
005	CROSBY ISD	2020	2,306,736,368	1.48	34,100,484	1,465,579	32,634,905	0.00253300396	239,046
006	CHANNELVIEW ISD	2020	3,964,883,914	1.31	52,090,645	1,114,689	50,975,956	0.00395657034	373,391
007	NEW CANEY ISD	2020	73,872,824	1.48	1,090,437	41,412	1,049,025	0.00008142157	7,684
008	ALIEF ISD	2020	17,736,068,227	1.20	213,684,150	4,153,262	209,530,888	0.01626303378	1,534,783
009	ALDINE ISD	2020	23,537,763,689	1.27	299,965,260	4,523,808	295,441,452	0.02293110276	2,164,065
015	GALENA PARK ISD	2020	10,162,626,836	1.46	148,181,262	1,422,026	146,759,236	0.01139092397	1,074,990
016	GOOSE CREEK ISD	2020	11,745,734,774	1.34	157,522,049	1,762,680	155,759,369	0.01208948196	1,140,914
017	KLEIN ISD	2020	24,200,340,843	1.34	323,631,158	9,371,105	314,260,053	0.02439173484	2,301,908
018	HUMBLE ISD	2020	18,785,896,421	1.38	260,006,199	6,878,039	253,128,160	0.01964689724	1,854,126
019	KATY ISD	2020	25,935,252,360	1.39	360,188,785	2,658,440	357,530,345	0.027750021929	2,618,857
020	LA PORTE ISD	2020	12,305,336,029	1.27	156,240,852	1,551,911	154,688,941	0.01200639915	1,133,074
021	PASADENA ISD	2020	17,008,698,361	1.38	235,230,298	8,285,449	226,944,849	0.01761464282	1,662,337
023	SHELDON ISD	2020	5,839,158,581	1.50	87,680,805	319,089	87,361,716	0.00678070217	639,912
024	SPRING ISD	2020	15,413,798,969	1.38	213,373,219	5,906,747	207,466,472	0.01610280127	1,519,661
025	SPRING BRANCH ISD	2020	35,973,762,398	1.31	470,284,996	22,723,965	447,561,031	0.03473807731	3,278,318
026	TOMBALL ISD	2020	11,393,772,055	1.29	146,979,660	3,185,676	143,793,984	0.01116077179	1,053,270
027	CLEAR CREEK ISD	2020	17,362,525,279	1.27	219,792,208	8,056,486	211,735,722	0.01643416507	1,550,933
028	DAYTON ISD	2020	4,488,583	1.20	53,845	737	53,108	0.00000412205	389
029	PEARLAND ISD	2020	205,877,113	1.36	2,796,841	323,860	2,472,981	0.00019194387	18,114
030	HUFFMAN ISD	2020	1,427,821,185	1.34	19,162,788	726,135	18,436,653	0.00143098666	135,046
031	STAFFORD MSD	2020	10,553,002	1.22	128,991	4,945	124,046	0.00000962797	909
<u>COUNTY-WIDE UNITS</u>									
040	HARRIS COUNTY	2020	502,563,071,913	0.39	1,965,825,712	0	1,965,825,712	0.15258032039	14,399,382
041	HARRIS COUNTY FLOOD CONTROL	2020	492,664,816,907	0.03	154,795,285	0	154,795,285	0.01201465320	1,133,853
042	PORT OF HOUSTON AUTHORITY	2020	492,642,114,763	0.01	48,820,834	0	48,820,834	0.00378929752	357,605
043	HARRIS COUNTY HOSPITAL DIST	2020	492,769,385,406	0.17	821,495,842	0	821,495,842	0.06376155221	6,017,335
044	HARRIS COUNTY DPT OF EDUCATION	2020	508,652,408,052	0.00	25,397,015	0	25,397,015	0.00197122495	186,029
<u>COLLEGE DISTRICTS</u>									
045	LONE STAR COLLEGE SYSTEM DISTRICT	2020	162,881,575,824	0.11	175,586,339	594,709	174,991,630	0.01358222082	1,281,788
046	LEE JR COLLEGE DISTRICT	2020	11,889,353,928	0.23	27,357,403	312,504	27,044,899	0.00209912776	198,100
047	SAN JACINTO COMMUNITY COLLEGE DISTRICT	2020	65,118,882,619	0.17	110,284,037	0	110,284,037	0.00855985024	807,814
048	HOUSTON COMMUNITY COLLEGE SYSTEM	2020	216,692,213,761	0.10	217,262,114	0	217,262,114	0.01686310376	1,591,413
<u>CITIES</u>									
051	CITY OF BAYTOWN	2020	4,562,637,900	0.80	36,279,815	625,887	35,653,928	0.00276732963	261,160
052	CITY OF BELLAIRE	2020	4,809,803,887	0.45	21,514,253	0	21,514,253	0.00166985893	157,589
053	CITY OF BUNKER VILLAGE	2020	2,233,896,977	0.28	6,143,217	0	6,143,217	0.00047681441	44,998

Jur No.	Taxing Unit	Tax Year	Taxable Value as of 4/9/2021	Tax Rate	Total Levy	Frozen Levy Loss	Adjusted Levy	Allocation Ratio	2022 Budget Allocation
054	CITY OF DEER PARK	2020	3,221,099,838	0.72	23,191,919	704,608	22,487,311	0.00174538418	164,716
055	CITY OF HEDWIG VILLAGE	2020	1,176,663,088	0.37	4,411,628	0	4,411,628	0.00034241470	32,315
056	CITY OF EL LAGO	2020	283,562,366	0.49	1,376,466	0	1,376,466	0.00010683634	10,082
057	CITY OF GALENA PARK	2020	725,647,637	0.96	6,997,130	0	6,997,130	0.00054309206	51,253
058	CITY OF FRIENDSWOOD	2020	751,068,007	0.49	3,660,060	9,718	3,650,342	0.00028332642	26,738
059	CITY OF PEARLAND	2020	1,255,391,020	0.72	9,038,815	521,664	8,517,151	0.00066107064	62,387
060	CITY OF HILSHIRE VILLAGE	2020	256,461,145	0.59	1,513,429	0	1,513,429	0.00011746691	11,086
061	CITY OF HOUSTON	2020	257,780,832,975	0.56	1,448,315,832	0	1,448,315,832	0.11241306507	10,608,699
062	CITY OF HUMBLE	2020	2,217,840,092	0.26	5,737,397	0	5,737,397	0.00044531612	42,026
063	CITY OF KATY	2020	985,902,749	0.45	4,408,642	0	4,408,642	0.00034218293	32,293
064	CITY OF MISSOURI CITY	2020	441,708,669	0.60	2,641,572	0	2,641,572	0.00020502932	19,349
065	CITY OF HUNTERS CREEK VILLAGE	2020	3,041,840,181	0.19	5,903,664	0	5,903,664	0.00045822116	43,243
066	CITY OF JACINTO CITY	2020	513,669,094	0.77	3,978,901	0	3,978,901	0.00030882798	29,145
067	CITY OF LEAGUE CITY	2020	186,973,933	0.52	962,916	43,347	919,569	0.00007137364	6,736
070	CITY OF JERSEY VILLAGE	2020	1,103,925,103	0.72	7,986,523	0	7,986,523	0.00061988519	58,500
071	CITY OF LA PORTE	2020	4,120,203,927	0.71	29,253,448	591,200	28,662,248	0.00222466061	209,947
072	CITY OF MORGANS POINT	2020	544,614,101	0.95	5,169,156	37,914	5,131,242	0.00039826858	37,586
073	CITY OF NASSAU BAY	2020	697,061,640	0.72	5,033,622	0	5,033,622	0.00039069163	36,871
074	CITY OF PASADENA	2020	11,558,942,706	0.53	61,687,419	179,453	61,507,966	0.00477402709	450,537
075	CITY OF PINEY POINT VILLAGE	2020	2,744,107,425	0.26	7,001,316	0	7,001,316	0.00054341696	51,284
076	CITY OF SEABROOK	2020	1,501,565,499	0.54	8,162,705	73,618	8,089,087	0.00062784580	59,251
077	CITY OF SHOREACRES	2020	131,315,176	0.82	1,081,189	24,940	1,056,249	0.00008198226	7,737
078	CITY OF SOUTH HOUSTON	2020	787,104,358	0.70	5,494,406	28,486	5,465,920	0.00042424506	40,037
079	CITY OF SOUTHSIDE PLACE	2020	895,783,950	0.32	2,855,473	0	2,855,473	0.00022163154	20,916
080	CITY OF SPRING VALLEY	2020	1,315,075,992	0.43	5,589,073	0	5,589,073	0.00043380374	40,939
082	CITY OF TAYLOR LAKE VILLAGE	2020	506,647,825	0.26	1,316,778	0	1,316,778	0.00010220357	9,645
083	CITY OF TOMBALL	2020	2,160,330,299	0.34	7,298,935	0	7,298,935	0.00056651708	53,464
084	CITY OF WEBSTER	2020	2,345,105,954	0.37	8,760,612	4,686	8,755,926	0.00067960351	64,136
085	CITY OF WEST UNIVERSITY PLACE	2020	6,706,946,772	0.29	19,722,850	0	19,722,850	0.00153081667	144,467
086	CITY OF WALLER	2020	140,244,099	0.50	700,940	0	700,940	0.00005440444	5,134
SPECIAL DISTRICTS									
100	HARRIS COUNTY MUD 421	2020	47,365,491	1.25	592,069	0	592,069	0.00004595427	4,337
101	ADDICKS UD	2020	447,572,439	0.60	2,685,435	0	2,685,435	0.00020843380	19,670
105	HARRIS COUNTY MUD 264	2020	264,627,842	0.40	1,058,511	0	1,058,511	0.00008215782	7,753
106	HARRIS COUNTY MUD 502	2020	393,131,093	1.48	5,818,340	0	5,818,340	0.00045159862	42,618
108	HARRIS COUNTY MUD 255	2020	179,284,724	0.26	471,519	0	471,519	0.00003659761	3,454
110	BAKER ROAD MUD	2020	260,751,699	0.30	782,255	0	782,255	0.00006071582	5,730
111	BAMMEL UD	2020	181,293,124	0.37	670,785	0	670,785	0.00005206392	4,913
112	BARKER CYPRESS MUD	2020	391,944,313	0.80	3,135,555	0	3,135,555	0.00024337050	22,967
115	HARRIS COUNTY MUD 499	2020	153,257,880	0.88	1,348,669	0	1,348,669	0.00010467884	9,879
116	BEECHNUT MUD	2020	76,416,742	0.59	450,859	0	450,859	0.00003499405	3,302

Jur No.	Taxing Unit	Tax Year	Taxable Value as of 4/9/2021	Tax Rate	Total Levy	Frozen Levy Loss	Adjusted Levy	Allocation Ratio	2022 Budget Allocation
117	BILMA PUD	2020	511,507,093	0.52	2,659,837	0	2,659,837	0.00020644698	19,483
118	BISSONNET MUD	2020	432,969,432	0.56	2,424,629	0	2,424,629	0.00018819098	17,760
120	WEST RANCH MANAGEMENT DISTRICT	2020	740	0.43	3	0	3	0.00000000023	-
121	BRIDGESTONE MUD	2020	1,700,580,663	0.52	8,843,019	0	8,843,019	0.00068636333	64,774
124	BAYBROOK MUD	2020	396,511,084	1.11	4,401,273	0	4,401,273	0.00034161098	32,239
125	THE WOODLANDS TOWNSHIP	2020	2,895,893,681	0.22	6,460,739	0	6,460,739	0.00050145932	47,324
128	HARRIS COUNTY MUD 250	2020	69,190,862	1.13	781,857	0	781,857	0.00006068493	5,727
129	HARRIS COUNTY MUD 276	2020	416,874,776	0.52	2,167,749	0	2,167,749	0.00016825288	15,878
131	CNP UTILITY DISTRICT	2020	744,120,514	0.28	2,083,537	0	2,083,537	0.00016171665	15,262
134	CASTLEWOOD MUD	2020	280,281,708	0.41	1,149,155	0	1,149,155	0.00008919328	8,417
135	CEDAR BAYOU PARK UD	2020	34,905,885	0.09	31,031	0	31,031	0.00000240851	227
136	CHARTERWOOD MUD	2020	455,763,113	0.41	1,845,841	0	1,845,841	0.00014326754	13,521
137	CHELFORD CITY MUD	2020	172,913,560	0.35	605,197	0	605,197	0.00004697321	4,433
138	CHELFORD ONE MUD	2020	250,354,935	0.48	1,189,186	0	1,189,186	0.00009230034	8,711
139	CHIMNEY HILL MUD	2020	448,006,921	0.76	3,404,853	0	3,404,853	0.00026427244	24,940
140	CIMARRON MUD	2020	1,072,710,605	0.37	3,915,394	0	3,915,394	0.00030389880	28,680
141	CLAY ROAD MUD	2020	229,940,894	0.75	1,724,557	0	1,724,557	0.00013385391	12,632
142	CLEAR LAKE CITY WATER AUTHORITY	2020	6,165,093,585	0.26	16,029,243	0	16,029,243	0.00124413218	117,412
145	CORNERSTONES MUD	2020	389,038,114	0.30	1,167,114	0	1,167,114	0.00009058719	8,549
146	CROSBY MUD	2020	296,555,909	0.46	1,364,157	0	1,364,157	0.00010588096	9,992
147	CY - CHAMP PUD	2020	740,058,032	0.35	2,590,203	0	2,590,203	0.00020104224	18,973
148	CYPRESS CREEK UD	2020	204,500,649	0.33	664,627	0	664,627	0.00005158596	4,868
149	CYPRESS FOREST PUD	2020	694,282,638	0.28	1,943,991	0	1,943,991	0.00015088559	14,239
150	CYPRESS HILL MUD 1	2020	957,639,367	0.70	6,703,476	0	6,703,476	0.00052029969	49,102
151	CYPRESS KLEIN UD	2020	303,010,438	0.11	345,432	0	345,432	0.00002681119	2,530
152	CYPRESSWOOD UD	2020	208,243,175	0.34	714,274	0	714,274	0.00005543938	5,232
153	CAMFIELD MUD	2020	17,507,407	0.50	87,537	0	87,537	0.00000679431	641
154	LOWER KIRBY PEARLAND MGMT DIST	2020	385,494,698	0.70	2,698,463	0	2,698,463	0.00020944499	19,766
156	HARRIS COUNTY MUD 278	2020	625,429,736	0.84	5,253,610	0	5,253,610	0.00040776631	38,482
159	HARRIS COUNTY MUD 290	2020	749,920,851	0.82	6,149,351	0	6,149,351	0.00047729050	45,043
161	MEADOWHILL REGIONAL MUD	2020	702,584,374	0.68	4,777,574	0	4,777,574	0.00037081811	34,995
162	DOWDELL PUD	2020	675,341,099	0.80	5,402,729	0	5,402,729	0.00041934039	39,574
163	EL DORADO UD	2020	162,409,281	0.53	860,769	0	860,769	0.00006680979	6,305
164	EMERALD FOREST UD	2020	415,169,325	0.66	2,719,359	0	2,719,359	0.00021106686	19,919
165	ENCANTO REAL UD	2020	326,588,285	0.89	2,906,636	0	2,906,636	0.00022560263	21,291
170	HARRIS COUNTY MUD 286	2020	463,777,222	0.13	579,722	0	579,722	0.00004499594	4,246
171	FALLBROOK UD	2020	285,562,441	0.27	756,740	0	756,740	0.00005873544	5,543
172	FAULKEY GULLY MUD	2020	660,358,994	0.37	2,456,535	0	2,456,535	0.00019066741	17,994
174	FOREST HILLS MUD	2020	131,016,774	0.95	1,244,659	0	1,244,659	0.00009660595	9,117
175	FOUNTAINHEAD MUD	2020	317,450,566	0.52	1,650,743	0	1,650,743	0.00012812473	12,091
176	FRY ROAD MUD	2020	295,929,727	0.42	1,235,507	0	1,235,507	0.00009589561	9,050

Jur No.	Taxing Unit	Tax Year	Taxable Value as of 4/9/2021	Tax Rate	Total Levy	Frozen Levy Loss	Adjusted Levy	Allocation Ratio	2022 Budget Allocation
177	HARRIS COUNTY MUD 415	2020	54,710,620	0.80	437,685	0	437,685	0.00003397154	3,206
178	HARRIS COUNTY ID 18	2020	2,052,231,846	0.75	15,289,127	0	15,289,127	0.00118668704	111,991
179	HARRIS COUNTY MUD 304	2020	365,415,341	0.77	2,813,698	0	2,813,698	0.00021838912	20,610
180	HARRIS COUNTY MUD 275	2020	94,239,327	0.75	706,795	0	706,795	0.00005485889	5,177
182	GRANT ROAD PUD	2020	401,163,217	0.60	2,386,921	0	2,386,921	0.00018526422	17,484
183	GREENWOOD UD	2020	385,508,439	0.74	2,852,762	0	2,852,762	0.00022142112	20,896
185	GREENS TRAIL MUD	2020	308,668,817	0.21	648,205	0	648,205	0.00005031134	4,748
186	GREENS PARKWAY MUD	2020	676,938,042	0.30	2,030,814	0	2,030,814	0.00015762448	14,875
187	HARRIS COUNTY MUD 287	2020	433,658,393	1.14	4,943,706	0	4,943,706	0.00038371268	36,212
189	HARRIS COUNTY MUD 489	2020	457,038,325	1.00	4,570,383	0	4,570,383	0.00035473669	33,477
190	HARRIS COUNTY MUD 284	2020	248,749,715	0.75	1,865,623	0	1,865,623	0.00014480295	13,665
193	HARRIS COUNTY MUD 285	2020	882,743,645	0.66	5,826,108	0	5,826,108	0.00045220155	42,675
197	HARRIS COUNTY MUD 401	2020	359,322,277	1.00	3,584,240	0	3,584,240	0.00027819582	26,254
205	HARRIS COUNTY MUD 321	2020	437,866,380	1.00	4,378,664	0	4,378,664	0.00033985615	32,073
206	HARRIS COUNTY FWSD 6	2020	696,909,857	0.21	1,466,647	0	1,466,647	0.00011383586	10,743
207	HARRIS COUNTY MUD 282	2020	304,737,423	0.80	2,437,899	0	2,437,899	0.00018922095	17,857
208	HARRIS COUNTY MUD 316	2020	109,420,848	0.60	656,525	0	656,525	0.00005095711	4,809
213	HARRIS COUNTY MUD 322	2020	358,202,190	0.50	1,791,011	0	1,791,011	0.00013901183	13,119
220	HARRIS COUNTY MUD 342	2020	274,020,991	0.68	1,863,343	0	1,863,343	0.00014462598	13,649
222	HARRIS COUNTY MUD 344	2020	433,330,241	0.75	3,249,977	0	3,249,977	0.00025225152	23,806
224	HARRIS COUNTY MUD 345	2020	581,223,654	0.18	1,046,203	0	1,046,203	0.00008120251	7,663
225	HARRIS COUNTY MUD 346	2020	140,284,294	0.10	140,284	0	140,284	0.00001088834	1,028
227	HARRIS COUNTY FWSD 27	2020	99,071,647	0.59	584,523	0	584,523	0.00004536857	4,282
228	HARRIS COUNTY MUD 404	2020	101,489,833	0.86	874,081	0	874,081	0.00006784302	6,403
229	HARRIS COUNTY MUD 412	2020	347,549,893	0.89	3,093,194	0	3,093,194	0.00024008259	22,657
230	HARRIS COUNTY MUD 407	2020	116,261,035	0.38	441,792	0	441,792	0.00003429031	3,236
231	HARRIS COUNTY MUD 405	2020	36,175,680	1.25	452,196	0	452,196	0.00003509783	3,312
232	HARRIS COUNTY MUD 433	2020	589,120,559	1.00	5,891,206	0	5,891,206	0.00045725422	43,152
234	HARRIS COUNTY MUD 451	2020	95,991,857	0.90	863,927	0	863,927	0.00006705491	6,328
235	HARRIS COUNTY MUD 459	2020	145,919,474	0.69	1,006,844	0	1,006,844	0.00007814761	7,375
236	HARRIS COUNTY MUD 416	2020	174,128,751	0.65	1,131,837	0	1,131,837	0.00008784912	8,291
237	HARRIS COUNTY MUD 434	2020	184,880,481	1.23	2,269,408	0	2,269,408	0.00017614329	16,623
238	HARRIS COUNTY MUD 439	2020	29,402,617	0.80	235,221	0	235,221	0.00001825701	1,723
241	HARRIS COUNTY MUD 460	2020	199,858,352	0.74	1,478,952	0	1,478,952	0.00011479093	10,833
242	HARRIS COUNTY MUD 450	2020	327,575,027	0.59	1,916,314	0	1,916,314	0.00014873740	14,037
243	HARRIS COUNTY MUD 480	2020	151,655,670	1.20	1,819,868	0	1,819,868	0.00014125161	13,330
246	HARRIS COUNTY MUD 432	2020	319,762,974	1.30	4,156,919	0	4,156,919	0.00032264510	30,449
247	HARRIS COUNTY FWSD 47	2020	158,784,646	0.86	1,365,548	0	1,365,548	0.00010598892	10,002
248	HARRIS COUNTY MUD 481	2020	158,688,620	1.08	1,713,837	0	1,713,837	0.00013302186	12,554
249	HARRIS COUNTY MUD 406	2020	798,637,735	0.85	6,788,421	0	6,788,421	0.00052689282	49,724
251	HARRIS COUNTY FWSD 51	2020	654,885,719	0.25	1,637,214	0	1,637,214	0.00012707466	11,992

Jur No.	Taxing Unit	Tax Year	Taxable Value as of 4/9/2021	Tax Rate	Total Levy	Frozen Levy Loss	Adjusted Levy	Allocation Ratio	2022 Budget Allocation
252	CHAMPIONS MUD	2020	365,010,477	0.33	1,186,284	0	1,186,284	0.0009207510	8,689
253	BRAZORIA COUNTY MUD 18	2020	256,298,913	0.27	692,007	0	692,007	0.0005371109	5,069
254	KINGS MANOR MUD	2020	80,109,097	0.65	520,709	0	520,709	0.0004041556	3,814
255	HARRIS COUNTY MUD 501	2020	624,509,748	1.06	6,619,803	0	6,619,803	0.00051380530	48,489
256	HARRIS-BRAZORIA CO MUD 509	2020	227,473,505	0.85	1,933,525	0	1,933,525	0.00015007326	14,163
257	HARRIS COUNTY MUD 500	2020	154,676,683	1.00	1,546,767	0	1,546,767	0.00012005449	11,330
258	HARRIS COUNTY FWSD 58	2020	158,057,452	0.60	954,667	0	954,667	0.00007409782	6,993
261	HARRIS COUNTY FWSD 61	2020	1,183,533,020	0.29	3,432,246	0	3,432,246	0.00026639859	25,141
264	HARRIS COUNTY ID 1	2020	6,709,762,117	0.14	9,625,154	0	9,625,154	0.00074706983	70,503
276	HARRIS COUNTY MUD 396	2020	386,496,541	0.56	2,164,381	0	2,164,381	0.00016799147	15,854
301	HARRIS COUNTY MUD 1	2020	865,457,190	0.74	6,361,110	0	6,361,110	0.00049372648	46,594
305	HARRIS COUNTY MUD 5	2020	237,963,364	0.98	2,332,041	0	2,332,041	0.00018100463	17,082
306	HARRIS COUNTY MUD 6	2020	203,033,420	0.50	1,023,288	0	1,023,288	0.00007942393	7,495
308	HARRIS COUNTY MUD 8	2020	221,173,872	0.40	886,907	0	886,907	0.00006883853	6,496
311	HARRIS COUNTY MUD 11	2020	201,018,510	0.73	1,457,384	0	1,457,384	0.00011311690	10,675
313	CLEAR BROOK CITY MUD	2020	1,161,539,591	0.59	6,853,084	0	6,853,084	0.00053191173	50,198
316	HARRIS COUNTY MUD 16	2020	199,045,022	0.57	1,134,557	0	1,134,557	0.00008806023	8,310
318	HARRIS COUNTY MUD 18	2020	313,680,016	0.37	1,160,616	0	1,160,616	0.00009008284	8,501
319	HARRIS COUNTY MUD 494	2020	197,300,950	1.30	2,564,912	0	2,564,912	0.00019907924	18,788
321	HARRIS COUNTY MUD 461	2020	403,710,321	0.75	3,027,827	0	3,027,827	0.00023500904	22,178
323	HARRIS COUNTY MUD 23	2020	211,765,116	0.44	928,167	0	928,167	0.00007204098	6,799
324	HARRIS COUNTY MUD 24	2020	896,268,760	0.45	4,015,284	0	4,015,284	0.00031165190	29,411
325	HARRIS COUNTY MUD 25	2020	90,438,089	0.80	723,505	0	723,505	0.00005615586	5,300
326	HARRIS COUNTY MUD 26	2020	980,852,693	0.66	6,473,628	0	6,473,628	0.00050245972	47,418
327	HARRIS-WALLER CO MUD 2	2020	49,119,791	0.95	466,638	0	466,638	0.00003621876	3,418
331	HARRIS COUNTY MUD 529	2020	168,258,088	0.70	1,177,807	0	1,177,807	0.00009141714	8,627
332	HARRIS COUNTY MUD 449	2020	352,688,746	1.29	4,549,685	0	4,549,685	0.00035313018	33,326
333	HARRIS COUNTY MUD 33	2020	243,480,492	0.71	1,728,711	0	1,728,711	0.00013417633	12,663
334	HARRIS COUNTY WCID 159	2020	216,909,352	0.50	1,084,547	0	1,084,547	0.00008417864	7,944
336	HARRIS COUNTY MUD 36	2020	850,364,919	0.20	1,700,730	0	1,700,730	0.00013200454	12,458
337	HARRIS COUNTY MUD 504	2020	359,539,669	1.39	4,997,601	0	4,997,601	0.00038789581	36,607
338	HARRIS COUNTY ID 12	2020	7,764,533	0.55	42,705	0	42,705	0.00000331461	313
339	HARRIS COUNTY MUD 530	2020	259,696,598	1.23	3,194,268	0	3,194,268	0.00024792759	23,398
340	HARRIS COUNTY MUD 531	2020	174,047,413	1.35	2,349,640	0	2,349,640	0.00018237060	17,211
341	PEARLAND MUNICIPAL MGMT DIST 2	2020	22,484,597	0.09	20,630	0	20,630	0.00000160123	151
342	HARRIS COUNTY MUD 422	2020	50,783,516	1.50	761,753	0	761,753	0.00005912453	5,580
343	HARRIS COUNTY MUD 43	2020	237,162,266	0.48	1,144,308	0	1,144,308	0.00008881707	8,382
344	HARRIS COUNTY MUD 44	2020	172,058,232	0.25	421,543	0	421,543	0.00003271865	3,088
345	HARRIS COUNTY ID 18 (DA 1)	2020	914,175,529	0.24	2,148,312	0	2,148,312	0.00016674425	15,736
346	HARRIS COUNTY MUD 46	2020	260,058,356	0.38	975,219	0	975,219	0.00007569299	7,143
347	NORTHAMPTON MUD (DA)	2020	160,244,555	0.64	1,025,565	0	1,025,565	0.00007960067	7,512

Jur No.	Taxing Unit	Tax Year	Taxable Value as of 4/9/2021	Tax Rate	Total Levy	Frozen Levy Loss	Adjusted Levy	Allocation Ratio	2022 Budget Allocation
348	HARRIS COUNTY MUD 48	2020	41,011,081	0.48	198,686	0	198,686	0.00001542129	1,455
349	HARRIS COUNTY MUD 49	2020	646,180,747	0.85	5,492,536	0	5,492,536	0.00042631089	40,232
350	HARRIS COUNTY MUD 50	2020	154,666,177	0.99	1,531,195	0	1,531,195	0.00011884585	11,216
351	HARRIS COUNTY WCID 161	2020	371,073,467	0.85	3,154,124	0	3,154,124	0.00024481176	23,103
353	HARRIS COUNTY MUD 53	2020	948,316,944	0.53	5,026,080	0	5,026,080	0.00039010625	36,815
354	HARRIS-WALLER CO MUD 3	2020	245,796	0.93	2,286	0	2,286	0.00000017743	17
355	HARRIS COUNTY MUD 55	2020	1,024,726,227	0.40	4,098,905	0	4,098,905	0.00031814226	30,024
356	HARRIS COUNTY MUD 495	2020	423,826,900	1.50	6,357,404	0	6,357,404	0.00049343883	46,567
357	INTERCONTINENTAL MUD	2020	49,257,206	1.25	615,715	0	615,715	0.00004778958	4,510
358	HARRIS COUNTY MUD 58	2020	85,695,881	0.73	623,009	0	623,009	0.00004835572	4,563
359	HARRIS COUNTY MUD 537	2020	179,169,479	0.50	895,847	0	895,847	0.00006953242	6,562
360	HARRIS COUNTY MUD 319	2020	137,200,546	1.50	2,058,008	0	2,058,008	0.00015973518	15,075
361	HARRIS COUNTY MUD 61	2020	418,429,057	0.46	1,924,774	0	1,924,774	0.00014939403	14,099
362	HARRIS COUNTY MUD 62	2020	218,985,235	0.56	1,215,368	0	1,215,368	0.00009433249	8,902
363	HARRIS COUNTY MUD 63	2020	463,599,874	0.25	1,159,000	0	1,159,000	0.00008995741	8,490
364	HARRIS COUNTY MUD 64	2020	360,557,574	0.56	2,019,122	0	2,019,122	0.00015671699	14,790
365	HARRIS COUNTY MUD 65	2020	426,338,685	0.60	2,558,032	0	2,558,032	0.00019854524	18,737
366	GENERATION PARK MGMT DIST	2020	862,187,707	1.33	11,467,097	0	11,467,097	0.00089003482	83,995
368	HARRIS COUNTY ID 015	2020	79,565,863	1.25	994,573	0	994,573	0.00007719518	7,285
369	HARRIS COUNTY MUD 69	2020	216,691,445	0.36	779,027	0	779,027	0.00006046527	5,706
370	HARRIS COUNTY MUD 70	2020	410,566,099	0.62	2,539,351	0	2,539,351	0.00019709529	18,600
371	HARRIS COUNTY MUD 71	2020	865,642,568	0.79	6,838,576	0	6,838,576	0.00053078567	50,092
372	HARRIS COUNTY MUD 438	2020	112,539,030	0.65	729,253	0	729,253	0.00005660199	5,342
374	HARRIS COUNTY MUD 213A	2020	991,481	1.45	14,376	0	14,376	0.00000111581	105
375	HARRIS COUNTY MUD 213B	2020	61,867,405	0.80	494,939	0	494,939	0.00003841538	3,625
376	HARRIS COUNTY MUD 457	2020	319,828,784	1.50	4,797,432	0	4,797,432	0.00037235941	35,140
378	HARRIS COUNTY MUD 458	2020	11,878,696	1.18	140,169	0	140,169	0.00001087941	1,027
379	HARRIS COUNTY MUD 381	2020	213,484,145	0.56	1,195,511	0	1,195,511	0.00009279126	8,757
381	HARRIS COUNTY MUD 81	2020	665,783,536	0.30	1,997,351	0	1,997,351	0.00015502720	14,630
382	HARRIS COUNTY MUD 82	2020	737,517,080	0.68	4,978,240	0	4,978,240	0.00038639308	36,465
383	HARRIS COUNTY MUD 383	2020	657,582,954	0.70	4,603,081	0	4,603,081	0.00035727459	33,717
384	HARRIS COUNTY MUD 397	2020	399,460,095	0.57	2,296,097	0	2,296,097	0.00017821479	16,819
385	HARRIS COUNTY MUD 399	2020	145,152,876	0.97	1,407,983	0	1,407,983	0.00010928258	10,313
386	HARRIS COUNTY MUD 86	2020	276,122,733	0.62	1,709,200	0	1,709,200	0.00013266196	12,520
387	HARRIS COUNTY MUD 391	2020	708,026,780	1.00	7,080,268	0	7,080,268	0.00054954493	51,862
388	HARRIS COUNTY MUD 393	2020	203,144,160	0.64	1,300,123	0	1,300,123	0.00010091087	9,523
389	HARRIS COUNTY MUD 400	2020	750,823,423	0.79	5,931,505	0	5,931,505	0.00046038208	43,447
392	HARRIS COUNTY MUD 411	2020	132,032,983	0.58	765,791	0	765,791	0.00005943794	5,609
394	HARRIS COUNTY MUD 410	2020	259,194,004	0.56	1,451,486	0	1,451,486	0.00011265912	10,632
395	HARRIS MONTGMRY CO MUD 386	2020	2,899,220,029	0.49	14,206,178	0	14,206,178	0.00110263243	104,058
396	HARRIS COUNTY MUD 96	2020	373,363,599	0.75	2,800,227	0	2,800,227	0.00021734355	20,511

Jur No.	Taxing Unit	Tax Year	Taxable Value as of 4/9/2021	Tax Rate	Total Levy	Frozen Levy Loss	Adjusted Levy	Allocation Ratio	2022 Budget Allocation
399	HARRIS COUNTY MUD 420	2020	89,062,093	1.17	1,042,026	0	1,042,026	0.00008087831	7,633
400	HARRIS COUNTY RID 1	2020	148,557,495	0.29	427,400	0	427,400	0.00003317325	3,131
402	HARRIS COUNTY MUD 102	2020	542,348,054	0.55	2,982,914	0	2,982,914	0.00023152305	21,849
404	HARRIS COUNTY MUD 104	2020	334,678,367	0.41	1,372,181	0	1,372,181	0.00010650375	10,051
405	HARRIS COUNTY MUD 105	2020	670,274,469	0.77	5,161,113	0	5,161,113	0.00040058703	37,804
406	HARRIS COUNTY MUD 106	2020	365,985,679	0.87	3,165,776	0	3,165,776	0.00024571615	23,189
408	BAUER LANDING WCID	2020	152,357,232	0.77	1,173,151	0	1,173,151	0.00009105576	8,593
409	HARRIS COUNTY MUD 109	2020	660,281,260	0.48	3,169,350	0	3,169,350	0.00024599355	23,215
410	HARRIS-MONTGOMERY CO MGMT DIST	2020	8,483,744	1.25	106,047	0	106,047	0.00000823099	777
411	HARRIS COUNTY MUD 536	2020	184,590,876	1.50	2,768,863	0	2,768,863	0.00021490919	20,282
412	DOWDELL PUD (DA)	2020	113,168,027	0.38	430,039	0	430,039	0.00003337808	3,150
414	HARRIS COUNTY MUD 542	2020	70,789,261	1.33	941,497	0	941,497	0.00007307561	6,896
416	HARRIS COUNTY MUD 503	2020	9,110,138	1.50	136,652	0	136,652	0.00001060644	1,001
417	INTERCONTINENTAL CROSSING MUD	2020	67,552,012	0.95	641,744	0	641,744	0.00004980986	4,701
418	HARRIS COUNTY MUD 118	2020	297,268,788	0.48	1,426,890	0	1,426,890	0.00011075007	10,452
419	HARRIS COUNTY MUD 119	2020	245,155,976	0.44	1,073,783	0	1,073,783	0.00008334317	7,865
420	HARRIS COUNTY MUD 120	2020	572,580,653	0.44	2,519,355	0	2,519,355	0.00019554327	18,454
421	THE WOODLANDS ROAD UD 1	2020	38,158,092	0.19	72,500	0	72,500	0.00000562719	531
422	HARRIS COUNTY MUD 122	2020	127,865,475	0.61	779,979	0	779,979	0.00006053916	5,713
425	HARRIS COUNTY ID 14	2020	4,836,003	1.35	65,286	0	65,286	0.00000506726	478
427	HARRIS COUNTY MUD 127	2020	311,517,113	0.62	1,931,406	0	1,931,406	0.00014990879	14,147
428	SAINT GEORGE PLACE MGMT DIST	2020	387,153,693	0.12	464,584	0	464,584	0.00003605934	3,403
429	HARRIS COUNTY ID 23	2020	40,977,275	0.15	61,466	0	61,466	0.00000477077	450
430	HARRIS COUNTY MUD 130	2020	650,748,150	0.35	2,277,619	0	2,277,619	0.00017678059	16,683
431	HARRIS COUNTY MUD 552	2020	80,821,503	0.75	606,161	0	606,161	0.00004704804	4,440
432	HARRIS COUNTY MUD 132	2020	657,098,500	0.09	578,247	0	578,247	0.00004488145	4,236
433	HARRIS COUNTY MUD 423	2020	88,846,767	1.36	1,208,316	0	1,208,316	0.00009378514	8,851
435	HARRIS COUNTY MUD 551	2020	48,720,157	1.40	682,082	0	682,082	0.00005294075	4,996
436	HARRIS COUNTY MUD 136	2020	252,645,187	0.17	419,391	0	419,391	0.00003255162	3,072
438	NEWPORT MUD (DA)	2020	2,604,105	1.25	32,551	0	32,551	0.00000252649	238
441	HARRIS COUNTY MUD 538	2020	30,514,873	1.50	457,723	0	457,723	0.00003552681	3,353
442	HARRIS COUNTY MUD 473	2020	79,959,696	0.80	639,678	0	639,678	0.00004964951	4,686
443	HARRIS COUNTY FWSD 48	2020	2,577,696	1.50	38,665	0	38,665	0.00000300104	283
444	HARRIS COUNTY MUD 144	2020	185,713,989	0.53	984,284	0	984,284	0.00007639658	7,210
447	HARRIS COUNTY MUD 147	2020	150,184,610	0.53	795,978	0	795,978	0.00006178095	5,830
448	HARRIS COUNTY MUD 148	2020	251,377,560	0.90	2,252,343	0	2,252,343	0.00017481876	16,498
449	HARRIS COUNTY MUD 149	2020	209,620,444	0.52	1,090,026	0	1,090,026	0.00008460390	7,984
450	HARRIS COUNTY MUD 150	2020	326,583,199	0.65	2,122,791	0	2,122,791	0.00016476340	15,549
451	HARRIS COUNTY MUD 151	2020	539,627,855	0.34	1,834,735	0	1,834,735	0.00014240553	13,439
452	HARRIS COUNTY MUD 152	2020	591,164,087	0.27	1,596,143	0	1,596,143	0.00012388688	11,692
453	HARRIS COUNTY MUD 153	2020	715,117,248	0.47	3,346,749	0	3,346,749	0.00025976262	24,514

Jur No.	Taxing Unit	Tax Year	Taxable Value as of 4/9/2021	Tax Rate	Total Levy	Frozen Levy Loss	Adjusted Levy	Allocation Ratio	2022 Budget Allocation
454	HARRIS COUNTY MUD 154	2020	457,782,184	0.63	2,861,139	0	2,861,139	0.00022207132	20,957
455	HARRIS COUNTY MUD 155	2020	165,774,174	0.82	1,359,348	0	1,359,348	0.00010550770	9,957
456	HARRIS COUNTY MUD 156	2020	238,768,847	0.72	1,719,136	0	1,719,136	0.00013343315	12,592
457	HARRIS COUNTY MUD 157	2020	787,637,205	0.62	4,867,598	0	4,867,598	0.00037780545	35,654
458	HARRIS COUNTY MUD 158	2020	433,888,275	0.43	1,865,720	0	1,865,720	0.00014481048	13,666
460	HARRIS COUNTY MUD 518	2020	7,437,332	0.85	63,217	0	63,217	0.00000490668	463
462	HARRIS COUNTY MUD 162	2020	195,392,211	0.47	918,343	0	918,343	0.00007127848	6,727
463	HARRIS COUNTY MUD 163	2020	360,736,595	0.18	634,896	0	634,896	0.00004927834	4,651
465	HARRIS COUNTY MUD 165	2020	1,773,254,864	0.95	16,845,921	0	16,845,921	0.00130751979	123,394
466	HARRIS COUNTY MUD 166	2020	199,585,260	0.77	1,536,807	0	1,536,807	0.00011928143	11,257
467	HARRIS COUNTY MUD 167	2020	878,329,207	0.96	8,431,960	0	8,431,960	0.00065445840	61,763
468	HARRIS COUNTY MUD 168	2020	566,501,794	0.47	2,662,558	0	2,662,558	0.00020665817	19,503
470	HARRIS COUNTY MUD 170	2020	156,986,765	0.33	518,056	0	518,056	0.00004020964	3,795
471	HARRIS COUNTY MUD 171	2020	7,762,102	1.39	107,893	0	107,893	0.00000837427	790
472	HARRIS COUNTY MUD 172	2020	377,369,291	0.72	2,717,059	0	2,717,059	0.00021088835	19,902
473	HARRIS COUNTY MUD 173	2020	377,530,593	0.50	1,868,776	0	1,868,776	0.00014504767	13,689
474	HARRIS COUNTY MUD 565	2020	4,281,510	1.45	62,082	0	62,082	0.00000481858	455
476	HARRIS COUNTY MUD 561	2020	48,871,082	0.79	386,082	0	386,082	0.00002996630	2,828
478	HARRIS COUNTY MUD 558	2020	49,808,999	1.35	672,421	0	672,421	0.00005219090	4,925
479	HARRIS COUNTY MUD 179	2020	236,537,800	0.27	630,373	0	630,373	0.00004892728	4,617
480	HARRIS COUNTY MUD 180	2020	275,393,038	0.80	2,197,636	0	2,197,636	0.00017057260	16,097
482	HARRIS COUNTY MUD 182	2020	107,626,482	0.40	430,506	0	430,506	0.00003341433	3,153
483	HARRIS COUNTY MUD 183	2020	256,847,044	0.48	1,220,023	0	1,220,023	0.00009469380	8,936
484	HARRIS COUNTY MUD 382	2020	209,060,440	0.51	1,055,755	0	1,055,755	0.00008194391	7,733
485	HARRIS COUNTY MUD 185	2020	153,686,855	0.44	668,538	0	668,538	0.00005188951	4,897
486	HARRIS COUNTY MUD 186	2020	316,480,689	0.22	696,258	0	696,258	0.00005404104	5,100
487	HARRIS COUNTY MUD 465	2020	73,873	1.45	1,071	0	1,071	0.00000008313	8
488	HARRIS COUNTY MUD 188	2020	519,863,767	0.35	1,819,523	0	1,819,523	0.00014122483	13,328
489	HARRIS COUNTY MUD 189	2020	277,643,741	0.38	1,041,164	0	1,041,164	0.00008081140	7,626
490	HARRIS COUNTY MUD 390	2020	478,598,491	0.70	3,333,438	0	3,333,438	0.00025872947	24,417
491	HARRIS COUNTY MUD 191	2020	397,013,484	0.25	992,534	0	992,534	0.00007703692	7,270
493	HARRIS COUNTY MUD 389	2020	194,374,459	0.89	1,720,214	0	1,720,214	0.00013351682	12,600
496	HARRIS COUNTY MUD 196	2020	601,569,676	0.66	3,970,360	0	3,970,360	0.00030816506	29,082
500	HARRIS COUNTY MUD 200	2020	386,897,037	0.58	2,255,610	0	2,255,610	0.00017507233	16,522
501	HARRIS COUNTY MUD 374	2020	486,583,546	0.75	3,649,377	0	3,649,377	0.00028325152	26,731
502	HARRIS COUNTY MUD 202	2020	188,583,037	1.25	2,357,288	0	2,357,288	0.00018296422	17,267
504	HARRIS COUNTY MUD 371	2020	312,366,021	0.86	2,670,729	0	2,670,729	0.00020729238	19,563
505	HARRIS COUNTY MUD 205	2020	88,965,907	0.25	222,415	0	222,415	0.00001726305	1,629
506	HARRIS COUNTY MUD 419	2020	1,305,894,139	0.94	12,275,405	0	12,275,405	0.00095277278	89,916
507	HARRIS COUNTY MUD 468	2020	688,435,997	0.53	3,648,711	0	3,648,711	0.00028319982	26,726
508	HARRIS COUNTY MUD 208	2020	260,700,393	0.40	1,042,802	0	1,042,802	0.00008093854	7,638

Jur No.	Taxing Unit	Tax Year	Taxable Value as of 4/9/2021	Tax Rate	Total Levy	Frozen Levy Loss	Adjusted Levy	Allocation Ratio	2022 Budget Allocation
509	HARRIS COUNTY MUD 372	2020	780,665,185	0.17	1,307,614	0	1,307,614	0.00010149229	9,578
510	HARRIS COUNTY MUD 373	2020	184,898,784	0.21	379,043	0	379,043	0.00002941995	2,776
511	HARRIS COUNTY MUD 211	2020	80,482,402	0.40	321,930	0	321,930	0.00002498705	2,358
514	HARRIS COUNTY MUD 220	2020	174,727,621	0.78	1,362,875	0	1,362,875	0.00010578146	9,983
515	HARRIS COUNTY MUD 215	2020	58,454,639	0.50	292,273	0	292,273	0.00002268518	2,141
516	HARRIS COUNTY MUD 216	2020	307,539,612	0.49	1,506,944	0	1,506,944	0.00011696357	11,038
517	HARRIS COUNTY MUD 217	2020	127,795,314	1.04	1,329,071	0	1,329,071	0.00010315771	9,735
519	HARRIS COUNTY MUD 341	2020	313,733,954	0.39	1,232,974	0	1,232,974	0.00009569901	9,031
520	HARRIS COUNTY MUD 370	2020	630,076,446	0.34	2,142,260	0	2,142,260	0.00016627452	15,692
521	HARRIS COUNTY MUD 221	2020	370,102,146	0.37	1,369,378	0	1,369,378	0.00010628619	10,030
522	HARRIS COUNTY MUD 222	2020	434,010,619	0.30	1,280,331	0	1,280,331	0.00009937469	9,378
524	HARRIS COUNTY MUD 354	2020	583,042,410	0.43	2,507,082	0	2,507,082	0.00019459069	18,364
525	HARRIS COUNTY MUD 355	2020	703,477,841	0.06	422,087	0	422,087	0.00003276087	3,092
526	HARRIS COUNTY MUD 367	2020	662,125,815	0.56	3,707,905	0	3,707,905	0.00028779425	27,160
527	HARRIS COUNTY MUD 359	2020	297,883,309	0.15	431,931	0	431,931	0.00003352493	3,164
528	HARRIS COUNTY MUD 358	2020	417,046,868	0.61	2,543,986	0	2,543,986	0.00019745504	18,634
529	HARRIS COUNTY MUD 360	2020	481,003,014	0.32	1,539,210	0	1,539,210	0.00011946794	11,274
530	HARRIS COUNTY MUD 230	2020	563,367,577	0.46	2,591,491	0	2,591,491	0.00020114221	18,982
531	HARRIS COUNTY MUD 231	2020	26,959,904	1.00	269,599	0	269,599	0.00002092530	1,975
532	HARRIS COUNTY MUD 361	2020	309,261,395	0.78	2,412,239	0	2,412,239	0.00018722931	17,669
533	HARRIS COUNTY MUD 233	2020	134,228,934	0.62	832,219	0	832,219	0.00006459385	6,096
534	HARRIS COUNTY MUD 364	2020	561,567,488	0.45	2,498,975	0	2,498,975	0.00019396145	18,305
535	HARRIS COUNTY MUD 365	2020	544,136,816	0.47	2,557,443	0	2,557,443	0.00019849953	18,733
538	HARRIS COUNTY MUD 238	2020	493,371,441	0.49	2,392,851	0	2,392,851	0.00018572449	17,527
539	HARRIS COUNTY MUD 239	2020	357,570,666	0.60	2,145,424	0	2,145,424	0.00016652009	15,715
541	HARRIS COUNTY MUD 257	2020	309,136,640	0.55	1,700,252	0	1,700,252	0.00013196744	12,454
542	HARRIS COUNTY MUD 261	2020	141,627,274	0.50	708,136	0	708,136	0.00005496297	5,187
544	HARRIS COUNTY MUD 280	2020	240,178,269	0.65	1,561,159	0	1,561,159	0.00012117155	11,435
545	HARRIS COUNTY MUD 281	2020	309,243,618	0.55	1,700,840	0	1,700,840	0.00013201308	12,458
548	HARRIS COUNTY MUD 248	2020	539,946,436	0.46	2,483,754	0	2,483,754	0.00019278005	18,193
549	HARRIS COUNTY MUD 249	2020	296,764,946	0.78	2,314,767	0	2,314,767	0.00017966389	16,955
550	HARRIS COUNTY ESD 7	2020	14,441,387,490	0.10	14,398,063	0	14,398,063	0.00111752586	105,464
555	HARRIS COUNTY MUD 366	2020	267,595,280	0.16	428,152	0	428,152	0.00003323162	3,136
556	HARRIS COUNTY UD 6	2020	531,366,252	0.19	1,009,596	0	1,009,596	0.00007836121	7,395
557	HARRIS COUNTY MUD 165 DA 1	2020	22,234,012	0.55	122,287	0	122,287	0.00000949148	896
559	HARRIS COUNTY MUD 528	2020	11,429,544	0.68	77,721	0	77,721	0.00000603242	569
564	HARRIS COUNTY UD 14	2020	413,560,804	0.14	558,307	0	558,307	0.00004333378	4,090
565	HARRIS COUNTY UD 15	2020	258,928,229	0.66	1,695,980	0	1,695,980	0.00013163587	12,423
566	HARRIS COUNTY UD 16	2020	346,744,004	0.77	2,669,929	0	2,669,929	0.00020723028	19,557
567	CROSBY MUD (DA 1)	2020	871,257	0.86	7,493	0	7,493	0.00000058158	55
568	VILLAGE AT KATY DEVELOPEMENT DISTRICT	2020	3,542,813	1.00	35,428	0	35,428	0.00000274979	260

Jur No.	Taxing Unit	Tax Year	Taxable Value as of 4/9/2021	Tax Rate	Total Levy	Frozen Levy Loss	Adjusted Levy	Allocation Ratio	2022 Budget Allocation
600	HARRIS COUNTY WCID-FONDREN ROAD	2020	168,247,913	0.38	639,342	0	639,342	0.00004962343	4,683
601	HARRIS COUNTY WCID 1	2020	328,028,755	0.34	1,115,298	0	1,115,298	0.00008656542	8,169
602	HARRIS COUNTY WCID 21	2020	561,863,513	0.37	2,056,420	0	2,056,420	0.00015961192	15,063
603	HARRIS COUNTY WCID 36	2020	440,196,700	0.30	1,311,786	0	1,311,786	0.00010181611	9,609
604	HARRIS COUNTY WCID 50	2020	323,727,955	0.44	1,424,403	0	1,424,403	0.00011055704	10,434
605	HARRIS COUNTY WCID 70	2020	125,601,499	0.59	741,049	0	741,049	0.00005751756	5,428
606	HARRIS COUNTY WCID 74	2020	169,716,050	0.89	1,508,097	0	1,508,097	0.00011705306	11,047
609	HARRIS COUNTY WCID 84	2020	499,937,296	0.58	2,899,636	0	2,899,636	0.00022505932	21,239
610	HARRIS COUNTY WCID 89	2020	560,568,288	0.94	5,269,342	0	5,269,342	0.00040898737	38,597
611	HARRIS COUNTY WCID 91	2020	149,039,387	0.28	416,565	0	416,565	0.00003233228	3,051
612	HARRIS COUNTY WCID 92	2020	267,748,890	0.15	393,859	0	393,859	0.00003056992	2,885
613	HARRIS COUNTY WCID 96	2020	973,574,013	0.79	7,691,235	0	7,691,235	0.00059696599	56,337
614	HARRIS COUNTY WCID 155	2020	1,642,240,046	0.13	2,052,800	0	2,052,800	0.00015933095	15,036
616	HARRIS COUNTY WCID 156	2020	183,140,412	0.30	549,421	0	549,421	0.00004264408	4,024
617	HARRIS COUNTY WCID 157	2020	1,579,883,941	0.43	6,823,519	0	6,823,519	0.00052961700	49,981
618	HARRIS COUNTY ID 25	2020	100,844,630	0.90	907,602	0	907,602	0.00007044480	6,648
622	HARRIS COUNTY WCID 109	2020	646,745,810	0.25	1,616,865	0	1,616,865	0.00012549525	11,843
623	HARRIS COUNTY WCID 110	2020	926,601,511	0.37	3,428,426	0	3,428,426	0.00026610209	25,113
624	HARRIS COUNTY WCID 113	2020	91,386,302	0.77	703,675	0	703,675	0.00005461672	5,154
625	HARRIS COUNTY WCID 114	2020	496,028,128	0.25	1,240,070	0	1,240,070	0.00009624977	9,083
626	HARRIS COUNTY WCID 116	2020	327,339,914	0.27	867,451	0	867,451	0.00006732843	6,354
627	HARRIS COUNTY WCID 119	2020	673,163,498	0.45	3,029,236	0	3,029,236	0.00023511840	22,189
628	HARRIS COUNTY WCID 132	2020	171,283,080	0.36	616,619	0	616,619	0.00004785975	4,517
629	HARRIS COUNTY WCID 133	2020	244,015,349	0.71	1,739,829	0	1,739,829	0.00013503927	12,744
630	HARRIS COUNTY WCID 136	2020	129,546,357	0.82	1,062,280	0	1,062,280	0.00008245035	7,781
631	HARRIS COUNTY ESD 46	2020	6,417,701,779	0.10	6,417,702	0	6,417,702	0.00049811894	47,009
632	HARRIS COUNTY WCID 145	2020	1,418,437,992	0.06	808,510	0	808,510	0.00006275364	5,922
633	HARRIS COUNTY ESD 9	2020	43,670,674,931	0.06	25,980,558	0	25,980,558	0.000201651746	190,304
634	HARRIS COUNTY ESD 13	2020	8,297,544,868	0.10	8,297,545	0	8,297,545	0.00064402560	60,778
635	HARRIS COUNTY ESD 16	2020	14,894,411,194	0.05	7,447,206	0	7,447,206	0.00057802534	54,550
636	HARRIS COUNTY ESD 20	2020	5,400,492,427	0.10	5,400,492	0	5,400,492	0.00041916676	39,558
637	HARRIS COUNTY ESD 28	2020	3,785,532,833	0.10	3,785,533	0	3,785,533	0.00029381945	27,728
638	HARRIS COUNTY ESD 47	2020	4,242,695,583	0.08	3,563,864	0	3,563,864	0.00027661430	26,105
639	HARRIS COUNTY ESD 24	2020	6,009,202,024	0.10	6,009,202	0	6,009,202	0.00046641264	44,017
640	HARRIS COUNTY ESD 14	2020	794,880,455	0.05	397,440	0	397,440	0.00003084786	2,911
641	HARRIS COUNTY ESD 10	2020	5,150,613,369	0.10	5,150,613	0	5,150,613	0.00039977205	37,727
642	HARRIS COUNTY ESD 25	2020	1,945,342,503	0.10	1,945,343	0	1,945,343	0.00015099053	14,249
643	HARRIS COUNTY ESD 48	2020	13,733,909,932	0.10	13,650,682	0	13,650,682	0.00105951683	99,989
645	HARRIS COUNTY ESD 29	2020	3,304,802,689	0.10	3,304,803	0	3,304,803	0.00025650692	24,207
647	HARRIS COUNTY ESD 17	2020	5,503,790,941	0.10	5,451,175	0	5,451,175	0.00042310059	39,929
648	HARRIS COUNTY ESD 21	2020	2,439,326,286	0.10	2,439,326	0	2,439,326	0.00018933171	17,868

Jur No.	Taxing Unit	Tax Year	Taxable Value as of 4/9/2021	Tax Rate	Total Levy	Frozen Levy Loss	Adjusted Levy	Allocation Ratio	2022 Budget Allocation
649	HARRIS COUNTY ESD 19	2020	576,600,620	0.02	139,895	0	139,895	0.00001085815	1,025
650	HARRIS-FT BEND CO MUD 1	2020	51,061,709	0.64	326,795	0	326,795	0.00002536465	2,394
651	HEATHERLOCH MUD	2020	287,193,740	0.39	1,120,056	0	1,120,056	0.00008693472	8,204
652	HORSEPEN BAYOU MUD	2020	533,560,468	0.41	2,187,598	0	2,187,598	0.00016979349	16,024
654	HUNTERS GLEN MUD	2020	491,691,331	0.69	3,392,670	0	3,392,670	0.00026332684	24,851
656	INTERSTATE MUD	2020	705,609,986	0.39	2,751,879	0	2,751,879	0.00021359095	20,157
657	INVERNESS FOREST ID	2020	189,080,195	0.44	831,953	0	831,953	0.00006457320	6,094
658	JACKRABBIT ROAD PUD	2020	374,972,482	0.30	1,114,606	0	1,114,606	0.00008651171	8,164
660	HARRIS-FT BEND CO MUD 3	2020	697,774,546	0.70	4,884,422	0	4,884,422	0.00037911127	35,778
662	FORT BEND COUNTY MUD 30	2020	589,816	0.70	4,129	0	4,129	0.00000032048	30
664	HARRIS COUNTY ESD 75	2020	977,313,359	0.10	977,313	0	977,313	0.00007585552	7,159
665	HARRIS COUNTY ESD 15	2020	1,596,270,213	0.05	779,139	0	779,139	0.00006047397	5,707
666	HARRIS COUNTY ESD 11	2020	54,548,014,172	0.03	18,183,035	0	18,183,035	0.00141130177	133,188
667	HARRIS COUNTY ESD 50	2020	6,502,246,680	0.05	3,251,123	0	3,251,123	0.00025234047	23,814
668	HARRIS COUNTY ESD 12	2020	3,587,146,397	0.05	1,793,573	0	1,793,573	0.00013921068	13,138
669	HARRIS COUNTY ESD 80	2020	2,204,752,348	0.05	1,102,376	0	1,102,376	0.00008556246	8,075
670	HARRIS COUNTY ESD 60	2020	4,970,691,669	0.05	2,485,346	0	2,485,346	0.00019290362	18,205
671	HARRIS COUNTY ESD 1	2020	19,745,543,172	0.10	19,194,643	0	19,194,643	0.00148981914	140,598
672	HARRIS COUNTY ESD 2	2020	4,853,265,170	0.03	1,455,980	0	1,455,980	0.00011300793	10,665
673	HARRIS COUNTY ESD 3	2020	2,463,924,367	0.10	2,463,924	0	2,463,924	0.00019124092	18,048
674	HARRIS COUNTY ESD 4	2020	1,191,805,193	0.10	1,191,805	0	1,191,805	0.00009250362	8,730
675	HARRIS COUNTY ESD 5	2020	1,961,459,260	0.02	346,394	0	346,394	0.00002688586	2,537
676	HARRIS COUNTY ESD 6	2020	3,645,287,772	0.03	947,775	0	947,775	0.00007356289	6,942
677	HARRIS-FT BEND ESD 100	2020	2,996,692,340	0.09	2,547,188	0	2,547,188	0.00019770357	18,658
678	WALLER HARRIS ESD 200	2020	2,698,640,606	0.10	2,698,641	0	2,698,641	0.00020945881	19,767
679	HARRIS COUNTY ESD 8	2020	4,102,713,869	0.10	3,979,632	0	3,979,632	0.00030888472	29,150
681	KINGSBRIDGE MUD	2020	18,851,784	0.51	96,144	0	96,144	0.00000746235	704
682	KIRKMONT MUD	2020	125,241,012	0.54	672,845	0	672,845	0.00005222381	4,928
683	KLEIN PUD	2020	277,830,154	0.45	1,236,344	0	1,236,344	0.00009596057	9,056
684	KLEINWOOD MUD	2020	393,008,287	0.42	1,646,705	0	1,646,705	0.00012781132	12,062
691	LAKE MUD	2020	391,967,172	0.50	1,959,836	0	1,959,836	0.00015211542	14,356
692	LAKE FOREST UD	2020	363,369,644	0.25	890,256	0	890,256	0.00006909847	6,521
693	LANGHAM CREEK UD	2020	563,060,186	0.63	3,519,126	0	3,519,126	0.00027314190	25,777
694	LONGHORN TOWN UD	2020	255,784,386	0.35	895,245	0	895,245	0.00006948570	6,558
695	LOUETTA NORTH PUD	2020	395,959,331	0.26	1,029,494	0	1,029,494	0.00007990562	7,541
696	LOUETTA ROAD UD	2020	137,871,204	0.25	344,678	0	344,678	0.00002675267	2,525
697	LUCE BAYOU PUD	2020	54,503,287	1.02	555,934	0	555,934	0.00004314960	4,072
701	MALCOMSON ROAD UD	2020	865,749,561	0.44	3,809,298	0	3,809,298	0.00029566401	27,903
702	MASON CREEK UD	2020	670,246,801	0.35	2,352,566	0	2,352,566	0.00018259771	17,232
703	BRAZORIA COUNTY MUD 28	2020	113,414,019	0.82	929,995	0	929,995	0.00007218287	6,812
704	MAYDE CREEK MUD	2020	303,259,373	0.84	2,547,379	0	2,547,379	0.00019771839	18,659

Jur No.	Taxing Unit	Tax Year	Taxable Value as of 4/9/2021	Tax Rate	Total Levy	Frozen Levy Loss	Adjusted Levy	Allocation Ratio	2022 Budget Allocation
705	MEMORIAL HILLS UD	2020	112,416,709	0.88	989,267	0	989,267	0.0007678335	7,246
706	MEMORIAL MUD	2020	509,147,905	0.40	2,036,592	0	2,036,592	0.00015807295	14,918
707	MEMORIAL VILLAGES WATER AUTHORITY	2020	5,826,484,110	0.03	1,567,266	0	1,567,266	0.00012164555	11,480
709	MILLS ROAD MUD	2020	338,696,550	0.61	2,066,049	0	2,066,049	0.00016035929	15,134
710	MISSION BEND MUD 1	2020	200,149,584	0.23	460,344	0	460,344	0.00003573025	3,372
711	MISSION BEND MUD 2	2020	510,615,614	0.63	3,191,348	0	3,191,348	0.00024770095	23,376
712	MORTON ROAD MUD	2020	191,850,298	0.60	1,151,102	0	1,151,102	0.00008934440	8,432
714	MOUNT HOUSTON ROAD MUD	2020	317,820,873	1.30	4,131,671	0	4,131,671	0.00032068544	30,264
717	HARRIS COUNTY WCID 158	2020	99,014	0.50	495	0	495	0.00000003842	4
718	NEWPORT MUD	2020	737,768,701	0.60	4,418,497	0	4,418,497	0.00034294784	32,365
720	EAST ALDINE MGMT DIST (DA 1)	2020	952,600	1.25	11,908	0	11,908	0.00000092426	87
721	NORTHAMPTON MUD	2020	753,245,917	0.56	4,218,177	0	4,218,177	0.00032739973	30,898
722	NORTH BELT UD	2020	453,534,545	0.43	1,950,199	0	1,950,199	0.00015136743	14,285
724	NORTHEAST HARRIS CNTY MUD 1	2020	187,680,014	1.35	2,533,680	0	2,533,680	0.00019665513	18,559
725	NORTH FOREST MUD	2020	95,364,813	0.55	524,506	0	524,506	0.00004071027	3,842
727	NORTH MISSION GLEN MUD	2020	4,388,271	0.47	20,625	0	20,625	0.00000160084	151
728	NORTH PARK PUD	2020	267,864,593	0.27	709,841	0	709,841	0.00005509531	5,199
730	NORTHWEST FREEWAY MUD	2020	148,220,555	0.70	1,037,544	0	1,037,544	0.00008053043	7,600
731	NORTHGATE CROSSING MUD 1	2020	222,644,939	0.98	2,177,468	0	2,177,468	0.00016900723	15,950
732	NORTHGATE CROSSING MUD 2	2020	299,587,433	0.87	2,606,411	0	2,606,411	0.00020230025	19,092
734	NORTHGATE CROSSING ROAD UD	2020	480,573,227	0.11	528,631	0	528,631	0.00004103044	3,872
745	NORTHWEST HC MUD 5	2020	2,267,493,403	0.75	17,006,201	0	17,006,201	0.00131996015	124,568
746	NORTHWEST HC MUD 6	2020	349,100,376	0.38	1,337,054	0	1,337,054	0.00010377732	9,794
749	NORTHWEST HC MUD 9	2020	434,790,460	0.40	1,739,162	0	1,739,162	0.00013498750	12,739
750	NORTHWEST HC MUD 10	2020	710,490,796	0.66	4,689,239	0	4,689,239	0.00036396186	34,348
752	NORTHWEST HC MUD 12	2020	293,920,641	0.78	2,292,581	0	2,292,581	0.00017794189	16,793
755	NORTHWEST HC MUD 15	2020	472,207,749	0.57	2,667,974	0	2,667,974	0.00020707854	19,543
756	NORTHWEST HC MUD 16	2020	212,934,971	1.06	2,257,111	0	2,257,111	0.00017518884	16,533
759	NORTHWEST HC MUD 19	2020	701,224,688	0.74	5,189,063	0	5,189,063	0.00040275640	38,009
760	NORTHWEST HC MUD 20	2020	239,507,872	0.25	593,980	0	593,980	0.00004610259	4,351
761	NORTHWEST HC MUD 21	2020	144,435,823	0.22	317,037	0	317,037	0.00002460727	2,322
762	NORTHWEST HC MUD 22	2020	201,435,895	0.70	1,399,979	0	1,399,979	0.00010866133	10,255
763	NORTHWEST HC MUD 23	2020	177,730,136	0.76	1,341,863	0	1,341,863	0.00010415058	9,829
764	NORTHWEST HC MUD 24	2020	615,852,481	0.45	2,783,037	0	2,783,037	0.00021600932	20,385
768	NORTHWEST HC MUD 28	2020	118,239,359	0.72	851,323	0	851,323	0.00006607663	6,236
769	NORTHWEST HC MUD 29	2020	381,397,278	0.16	610,236	0	610,236	0.00004736432	4,470
770	NORTHWEST HC MUD 30	2020	388,833,357	0.65	2,527,417	0	2,527,417	0.00019616902	18,513
771	NORTHWEST HC MUD 32	2020	432,307,984	0.66	2,853,233	0	2,853,233	0.00022145768	20,900
776	NORTHWEST HC MUD 36	2020	258,298,872	0.71	1,833,922	0	1,833,922	0.00014234243	13,433
777	NW PARK CONSOLIDATED MUD	2020	914,720,108	0.43	3,915,002	0	3,915,002	0.00030386837	28,677
778	NOTTINGHAM COUNTRY MUD	2020	958,269,527	0.34	3,258,116	0	3,258,116	0.00025288324	23,865

Jur No.	Taxing Unit	Tax Year	Taxable Value as of 4/9/2021	Tax Rate	Total Levy	Frozen Levy Loss	Adjusted Levy	Allocation Ratio	2022 Budget Allocation
779	NORTHWOOD MUD 1	2020	71,568,588	1.00	715,686	0	715,686	0.00005554897	5,242
781	OAKMONT PUBLIC UTILITY DISTRICT	2020	461,256,226	0.85	3,897,615	0	3,897,615	0.00030251886	28,549
783	PARKWAY UD	2020	413,060,141	0.72	2,974,033	0	2,974,033	0.00023083374	21,784
784	PINE BOUGH PUD	2020	1,537,102	0.90	13,834	0	13,834	0.00000107375	101
786	RANKIN ROAD WEST MUD	2020	132,602,937	0.89	1,180,166	0	1,180,166	0.00009160024	8,645
787	PINE VILLAGE PUD	2020	55,592,134	1.21	672,665	0	672,665	0.00005220984	4,927
788	PONDEROSA FOREST UD	2020	382,455,763	0.10	382,456	0	382,456	0.00002968486	2,801
789	POSTWOOD MUD	2020	155,866,994	0.38	585,171	0	585,171	0.00004541887	4,286
790	PRESTONWOOD FOREST MUD	2020	266,491,661	0.34	898,077	0	898,077	0.00006970551	6,578
801	REID ROAD MUD 1	2020	327,736,657	0.47	1,547,245	0	1,547,245	0.00012009159	11,333
802	REID ROAD MUD 2	2020	629,703,787	0.31	1,958,379	0	1,958,379	0.00015200233	14,345
803	RENN ROAD MUD	2020	161,811,240	0.71	1,148,860	0	1,148,860	0.00008917038	8,415
804	RICEWOOD MUD	2020	403,543,942	0.39	1,553,644	0	1,553,644	0.00012058826	11,380
806	ROLLING CREEK UD	2020	341,313,067	0.68	2,320,929	0	2,320,929	0.00018014216	17,000
807	ROLLING FORK PUD	2020	174,963,486	0.48	839,825	0	839,825	0.00006518420	6,152
809	ROYALWOOD MUD	2020	54,033,441	0.46	248,057	0	248,057	0.00001925329	1,817
810	RICHEY ROAD MUD	2020	498,151,027	0.20	996,302	0	996,302	0.00007732938	7,298
811	REMINGTON MUD 1	2020	1,193,141,427	0.50	5,965,707	0	5,965,707	0.00046303672	43,698
822	SAGEMEADOW UD	2020	337,060,165	0.47	1,595,677	0	1,595,677	0.00012385071	11,688
823	SEQUOIA UD	2020	90,258,683	0.44	397,138	0	397,138	0.00003082442	2,909
824	SHASLA PUD	2020	109,258,040	0.91	994,248	0	994,248	0.00007716995	7,283
825	SW HARRIS COUNTY MUD 1	2020	84,893,302	0.50	421,071	0	421,071	0.00003268202	3,084
826	SPANISH COVE PUD	2020	26,419,406	0.66	175,420	0	175,420	0.00001361547	1,285
827	SPENCER ROAD PUD	2020	388,232,801	0.39	1,494,696	0	1,494,696	0.00011601293	10,948
829	SPRING CREEK FOREST PUD	2020	219,259,101	0.46	1,008,592	0	1,008,592	0.00007828328	7,388
831	SPRING MEADOWS MUD	2020	280,512,514	0.82	2,300,203	0	2,300,203	0.00017853348	16,849
832	SPRING WEST MUD	2020	378,577,543	0.73	2,763,616	0	2,763,616	0.00021450193	20,243
833	SHELDON ROAD MUD	2020	83,203,785	1.34	1,114,931	0	1,114,931	0.00008653693	8,167
841	TATTOR ROAD MUD	2020	241,376,275	0.57	1,363,776	0	1,363,776	0.00010585139	9,989
842	TERRANOVA WEST MUD	2020	238,581,147	0.64	1,526,919	0	1,526,919	0.00011851396	11,184
844	HARRIS COUNTY MUD 368	2020	811,470,921	0.65	5,274,561	0	5,274,561	0.00040939245	38,635
846	TIMBERLAKE ID	2020	167,549,380	0.44	737,217	0	737,217	0.00005722013	5,400
847	TIMBER LANE UD	2020	912,474,145	0.89	8,121,020	0	8,121,020	0.00063032436	59,485
848	TRAIL OF THE LAKES MUD	2020	597,398,160	0.64	3,823,348	0	3,823,348	0.00029675452	28,005
850	HARRIS COUNTY ID 3	2020	3,482,397,410	0.14	4,701,237	0	4,701,237	0.00036489310	34,436
851	WESTADOR MUD	2020	311,972,001	0.17	527,233	0	527,233	0.00004092193	3,862
861	WEST HARRIS COUNTY MUD 1	2020	354,161,658	0.24	839,363	0	839,363	0.00006514834	6,148
862	WEST HARRIS COUNTY MUD 2	2020	483,273,324	0.43	2,078,075	0	2,078,075	0.00016129271	15,222
864	WEST HARRIS COUNTY MUD 4	2020	87,292,777	1.00	872,928	0	872,928	0.00006775353	6,394
865	WEST HARRIS COUNTY MUD 5	2020	255,373,141	0.97	2,477,119	0	2,477,119	0.00019226507	18,145
866	WEST HARRIS COUNTY MUD 6	2020	189,926,972	0.24	455,825	0	455,825	0.00003537950	3,339

Jur No.	Taxing Unit	Tax Year	Taxable Value as of 4/9/2021	Tax Rate	Total Levy	Frozen Levy Loss	Adjusted Levy	Allocation Ratio	2022 Budget Allocation
867	WEST HARRIS COUNTY MUD 7	2020	331,974,935	0.60	1,991,850	0	1,991,850	0.00015460023	14,590
869	WEST HARRIS COUNTY MUD 9	2020	329,086,617	0.43	1,415,072	0	1,415,072	0.00010983280	10,365
870	WEST HARRIS COUNTY MUD 10	2020	446,799,344	0.58	2,591,436	0	2,591,436	0.00020113794	18,982
871	WEST HARRIS COUNTY MUD 11	2020	978,224,964	0.44	4,304,190	0	4,304,190	0.00033407574	31,528
874	WEST HARRIS COUNTY MUD 14	2020	233,965,351	0.53	1,249,375	0	1,249,375	0.00009697199	9,151
875	WEST HARRIS COUNTY MUD 15	2020	578,201,594	0.23	1,300,954	0	1,300,954	0.00010097537	9,529
876	WEST HARRIS COUNTY MUD 16	2020	43,855,960	0.50	219,280	0	219,280	0.00001701972	1,606
877	WEST HARRIS COUNTY MUD 17	2020	134,687,740	0.97	1,299,737	0	1,299,737	0.00010088091	9,520
879	WEST HARRIS COUNTY MUD 21	2020	704,592,685	0.45	3,170,667	0	3,170,667	0.00024609577	23,225
893	WEST KEEGANS BAYOU ID	2020	181,012,860	0.09	164,722	0	164,722	0.00001278513	1,207
894	WESTLAKE MUD 1	2020	240,410,084	0.46	1,103,242	0	1,103,242	0.00008562968	8,081
895	WEST MEMORIAL MUD	2020	307,946,299	0.39	1,200,991	0	1,200,991	0.00009321660	8,797
896	WESTON MUD	2020	947,570,022	0.34	3,221,738	0	3,221,738	0.00025005971	23,599
897	WEST PARK MUD	2020	563,671,854	0.33	1,831,934	0	1,831,934	0.00014218813	13,419
899	WHITE OAK BEND MUD	2020	89,234,017	0.79	704,949	0	704,949	0.00005471561	5,164
901	WINDFERN FOREST UD	2020	389,860,678	0.47	1,832,345	0	1,832,345	0.00014222003	13,422
902	WOODCREEK MUD	2020	216,811,196	0.49	1,062,375	0	1,062,375	0.00008245773	7,782
907	NORTHPOINTE WCID	2020	1,313,872,833	0.27	3,547,457	0	3,547,457	0.00027534085	25,985
910	KATY MANAGEMENT DISTRICT 1	2020	137,847,036	0.80	1,102,776	0	1,102,776	0.00008559351	8,078
911	CINCO MUD 3	2020	31,210,266	0.35	107,675	0	107,675	0.00000835735	789
913	CINCO MUD 6	2020	116,615,219	0.33	384,830	0	384,830	0.00002986912	2,819
914	CINCO MUD 9	2020	169,838,762	0.40	670,863	0	670,863	0.00005206997	4,914
915	HARRIS-FT BEND CO MUD 5	2020	13,090,396	0.46	60,216	0	60,216	0.00000467375	441
916	FORT BEND WCID 2	2020	106,551,349	0.21	226,422	0	226,422	0.00001757406	1,659
917	WILLOW FORK DRAINAGE DISTRICT	2020	314,347,124	0.19	581,542	0	581,542	0.00004513720	4,260
921	FALL CREEK MGMT DISTRICT	2020	240,936,725	0.19	457,780	0	457,780	0.00003553124	3,353
551			\$ 4,239,266,723,668		\$ 13,049,295,620	\$ 165,421,035	\$ 12,883,874,585	1.00000000000%	\$94,372,473