



***HARRIS Central
APPRAISAL DISTRICT
HARRIS COUNTY
HOUSTON, TEXAS***

2024 BUDGET

August 2023

RESOLUTION NO. 2023-02

**A RESOLUTION OF THE BOARD OF DIRECTORS OF THE HARRIS
CENTRAL APPRAISAL DISTRICT APPROVING AND ADOPTING
THE 2024 BUDGET OF SAID DISTRICT**

* * * *

WHEREAS, pursuant to the provisions of the Texas Property Tax code, a proposed budget for the Harris Central Appraisal District for the year 2024 has heretofore been prepared by the chief appraiser of the district and timely submitted by him to the Board of Directors of such district and to the governing bodies of each taxing unit within such district; and

WHEREAS, following timely notice in writing furnished to the presiding officer of the governing body of each such taxing unit and published in a newspaper of general circulation in Harris County, Texas, in accordance with Section 6.062 of the Texas Property Tax Code, the Board of Directors of said district did on the 21st day of June, 2023, conduct a public hearing on such proposed budget; and

WHEREAS, at such public hearing any and all persons desiring to be heard on any matter relating to said proposed budget were heard and their comments and suggestions were duly noted and considered by the Board of Directors of said district; and

WHEREAS, the Board of Directors of the district now deems it necessary and appropriate to formally approve and adopt at this time the 2024 budget of the Harris Central Appraisal District; now, therefore

**BE IT RESOLVED BY THE BOARD OF DIRECTORS OF THE HARRIS CENTRAL
APPRAISAL DISTRICT:**

Section 1. That the facts and recitations set forth in the preamble of this Resolution be, and they are hereby, found to be true and correct and that they be, and they are hereby, adopted, ratified, and confirmed.

Section 2. That the proposed budget for the Harris Central Appraisal District for the year 2024 as heretofore submitted to and considered by the Board of Directors of such district and as heretofore modified or changed by such Board of Directors of such district during its deliberations on such budget following the public hearing thereon, in the total amount of \$117,413,324 (of which total sum it is anticipated that \$1,500,000 will be

contributed from such district's general fund balance, and that the remaining \$115,913,324 will be paid to the district by the various taxing units participating in the district according to their respective proportionate shares calculated pursuant to the formula established by Section 6.06(d) of the Texas Property Tax Code) be, and it is hereby, approved and adopted as the official budget of said district for the year 2024.

Section 3. HCAD will keep a separate accounting of all SB2 election related costs. If there is an excess in election related funds (\$14,000,000) collected that are not used for the election costs, pursuant to Section 6.06(j) of the Texas Property Tax Code, the chief appraiser will refund to the taxing jurisdictions its proportionate share of any excess funds collected toward the election costs not later than the 150th day after the end of the fiscal year for which the payments were made.

Section 4. That the chief appraiser of the Harris Central Appraisal District be, and he is hereby, authorized to make the interfund transfers between the general fund and the internal service fund as necessary for expenditures related to the group benefits fund.

Section 5. That the chief appraiser of the Harris Central Appraisal District be, and he is hereby, authorized to transfer unencumbered balances from one budget account to another budget account during the 2024 fiscal year in amounts of \$25,000 or less. Amounts exceeding \$25,000 may be transferred under the following circumstances and conditions: A written request to effect such transfers exceeding \$25,000 shall be submitted by the chief appraiser to the Board of Directors. Such request shall identify the budget account from which it is proposed the transfer will be made, the budget account to which it is proposed the transfer will be made, and the need or justification for such transfer. Approval of such request by formal action of the Board of Directors must be obtained before the chief appraiser shall be authorized to make such transfer.

Section 6. That, for the purpose of authenticating the official 2024 budget of the Harris Central Appraisal District adopted hereby, a copy of which is attached hereto and made a part hereof for all purposes, the chairman and secretary of the Board of Directors of said district be, and they are hereby, authorized and directed to affix their signatures on the cover of the original of such budget under the following certification which they shall cause to be placed thereon:

"This is to certify that this is the official 2024 budget of the Harris Central Appraisal District approved and adopted by the Board of Directors of said district on August 16, 2023."


Section 7. That the chief appraiser of the district be, and he is hereby, authorized and directed to place or cause to be placed the official, authenticated original of said 2024 budget among the public records of the district and to make the same available for inspection in the office of the district by any person requesting that right and privilege.

PASSED, APPROVED, AND ADOPTED this the 16th day of August, 2023.



Chairman, Board of Directors
Harris Central Appraisal District

ATTEST:



Secretary, Board of Directors
Harris Central Appraisal District

(SEAL)



***HARRIS Central
APPRAISAL DISTRICT***

2024 BUDGET

January 1, 2024 through December 31, 2024

**REVENUES & EXPENDITURES
FOR ALL DEPARTMENTS**

**Roland Altinger, Chief Appraiser
Houston, Texas
August 2023**

Contents

- 3 District Officials
Board of directors and chief appraiser
- 4 Plan of Organization
The departments and divisions of the district and the number of full-time equivalent positions

FINANCIAL SECTION

- 6 2024 Budget
Expenditures for the general fund by line item account
- 8 Expenditure Summary & Method of Financing
Summarizes expenditures by account groups and an estimate of revenue used to finance the expenditures
- 9 Line Item Expenditures by Department
General fund expenditures by line item account for each of the district's 3 operating departments
- 11 2024 Budget with Comparisons
Comparison of the 2024 budget to the 2023 budget and 2022 actual expenditures by line item

TEXAS PROPERTY TAX CODE SECTION

- 14 Schedule of Positions
List of full time equivalent positions in alphabetical order; indicating the pay grade and number of positions for each position title
- 20 Schedule of Appraisal Review Board Members
Number of appraisal review board members eligible for payment
- 21 Salary Schedule and Provisions
Employee pay is determined by three salary schedules: Classified, Technical, and Director; list of line item positions; salary adjustment and quality service incentive salary increases; compensatory time; career development program; and, career ladder program

23 General Provisions

Provisions relating to mileage, expense allowances, commissioned security officers uniform cleaning, cell phone allowance, travel regulations, van pool subsidy, general counsel, and re-appropriation of certain income

26 Employee Benefits Schedule

Provisions for employee benefits, including paid leave and vacation

29 Appraisal Review Board Provisions

Provisions relating to ARB Members and other appropriations

31 Capital Expenditures

List of capital items scheduled for acquisition

33 Estimated Cost Allocation to Taxing Units

List of taxing units allocated a portion of this budget and the estimated amount to be paid

DISTRICT OFFICIALS

Harris Central Appraisal District Board of Directors 2023

MIKE SULLIVAN
Chairman

MARTINA LEMOND DIXON
Secretary

AL ODOM
Assistant Secretary

ANN HARRIS BENNETT
Member

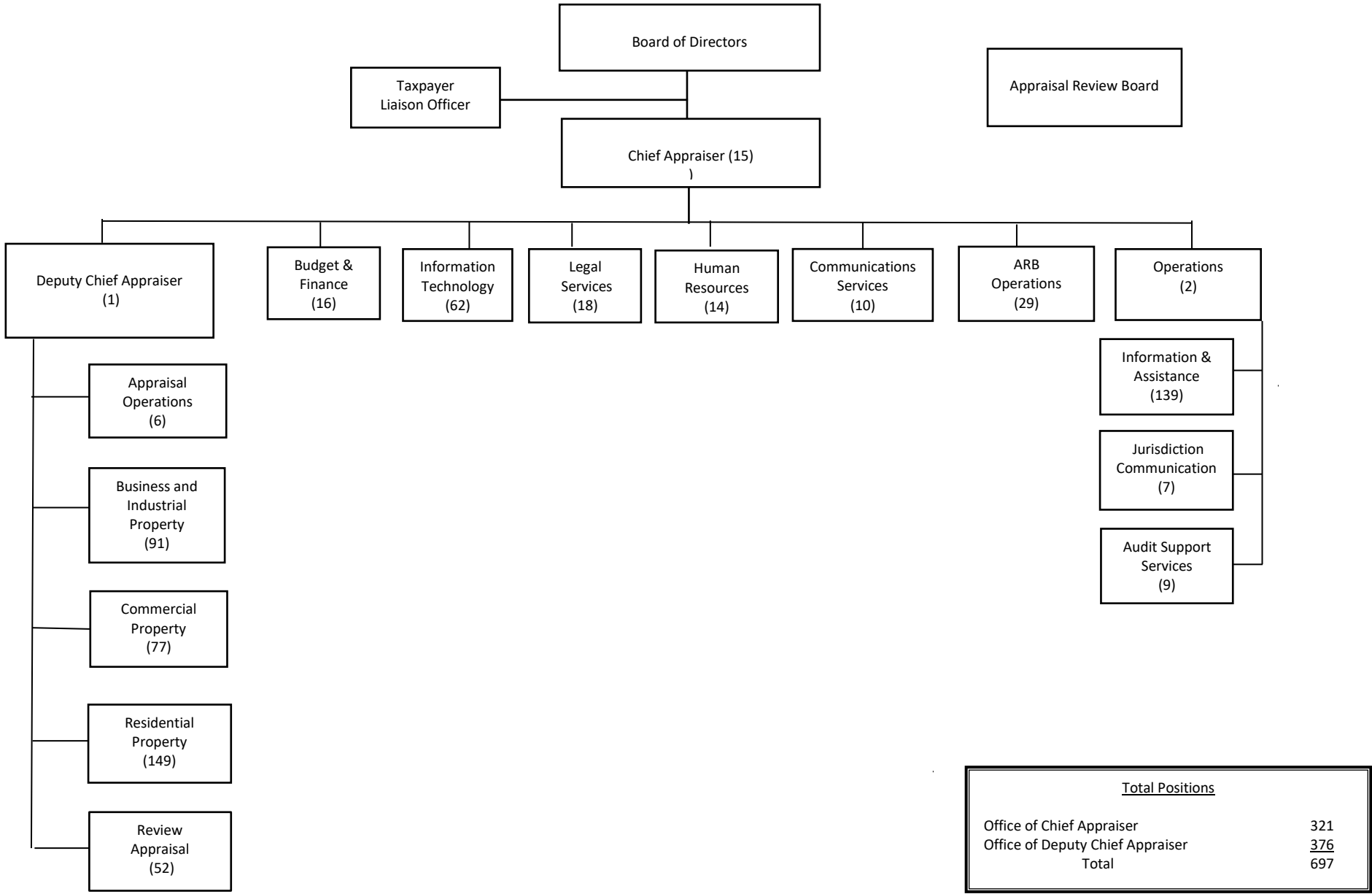
JIM ROBINSON
Member

JONATHAN COWEN
Member

KATHY BLUEFORD-DANIELS
Member

Roland Altinger
Chief Appraiser

PLAN OF ORGANIZATION - 2024



FINANCIAL SECTION

2024 Budget – General Fund

Expenditure Summary and Method of Financing

General Fund – Line Item Expenditures by Department

2024 Budget with Comparisons

2024 BUDGET
GENERAL FUND

Account Number	Account Name	2024 Budget
	Number of Positions	697.0
	Part-time & Seasonal FTEs	12.4
<u>SALARIES, WAGES & RELATED</u>		
	Salaries & Wages	\$48,608,866
	Allowance for Career Development	225,000
	Less Salary Lapse	(3,086,904)
	Allowance for Salary Adjustment	1,200,000
	Reserve for Longevity	358,955
	Reserve for COLA	1,701,310
	Allowance for Career Ladder	95,000
3010	Net Salaries & Wages	\$49,102,227
3011	ARB Board Members	3,081,000
3015	Contract & Seasonal Labor	-
3020	Shift Differential	32,000
3030	Overtime	654,001
3040	Part-time & Seasonal Wages	477,441
	TOTAL SALARIES, WAGES & RELATED	\$53,346,669
<u>EMPLOYEE BENEFITS & RELATED</u>		
	Group Health Insurance	100,925
3503	Workers' Compensation Insurance	174,259
3504	Group Life & LTD Insurance	275,176
3505	Group Dental Insurance	75,276
3506	Group Vision Insurance	239,488
3507	Unemployment Insurance	7,981,055
3520	Retirement	773,528
3526	FICA Medicare	217,448
3527	Social Security	19,899,347
	TOTAL EMPLOYEE BENEFITS & RELATED	\$10,062,192
<u>OFFICE & FIELD OPERATIONS</u>		
4001	Office Supplies	\$161,724
4003	Office Equipment Maintenance	52,200
4011	Communications Services	389,625
4020	Copier Leases	139,000
4021	Copier Supplies & Maintenance	134,350
4030	Mapping Reproduction & Supplies	3,250
4040	Public Notice Advertising	18,000
4050	Security Services	350,000
4060	Field Travel, Vanpool & Other Exp	491,250
4070	Appraisal Supplies	12,460
4080	Vehicle Gasoline & Maintenance	34,000
4090	Records Storage & Supplies	25,000
4097	Employee Recognition Activities	60,000
4100	Postage, Mailing, & Handling Svcs.	3,153,042
4200	Professional Registration & Dues	90,000
4202	Seminars & Other Tuition	396,246

2024 BUDGET
GENERAL FUND

Account Number	Account Name	2024 Budget
4212	Education Travel & Expenses	279,963
4213	Books, Manuals & Publications	358,284
4501	Printing, Forms, & Stationery	28,400
4530	Paper, Copier & Printer	65,000
TOTAL OFFICE & FIELD OPERATIONS		\$6,241,794
 <u>COMPUTER OPERATIONS</u>		
5009	Minor Equipment-Office & Field Operations	\$449,500
5010	Minor Equipment-Infrastructure	840,000
5020	Hardware Maintenance & Support	426,300
5030	Software Maintenance & Support	1,647,200
5040	Computer Supplies	28,000
5050	Software Subscriptions	2,265,085
5070	Software Purchases	291,500
TOTAL COMPUTER OPERATIONS		\$5,947,585
 <u>PROFESSIONAL SERVICES</u>		
5510	Financial Auditing	\$67,080
5520	Legal Services	10,983,967
5525	Arbitration Fees & Services	600,000
5526	State Office of Admin Hearings	5,000
5530	Appraisal Services	1,643,114
5550	Other Professional Services	16,255,725
TOTAL PROFESSIONAL SERVICES		\$29,554,886
 <u>OFFICE SPACE, UTILITIES & RELATED</u>		
6100	Office Space	\$120,000
6150	Utilities	502,000
6200	Building & Fixture Maintenance	1,520,043
6400	Casualty & Liability Insurance	206,000
TOTAL OFFICE SPACE, UTILITIES & RELATED		\$2,348,043
 <u>FIXED ASSETS PURCHASES</u>		
6501	Capital Purchases	\$75,000
TOTAL FIXED ASSETS PURCHASES		\$75,000
TOTAL BUDGET		\$117,413,324

EXPENDITURE SUMMARY AND METHOD OF FINANCING
2024 BUDGET

<u>BUDGETED EXPENDITURES</u>	2023 BUDGET	2024 BUDGET	Variance	% Change
<u>Account Groups</u>				
Number of Positions	681.0	697.0	16.0	2.35%
Part-time & Seasonal FTEs	11.5	12.4	0.9	8.03%
Salaries, Wages & Related	49,478,937	53,346,669	3,867,732	7.82%
Employee Benefits	18,971,148	19,899,347	928,199	4.89%
Office & Field Operations	6,229,002	6,241,794	12,792	0.21%
Computer Operations	5,079,505	5,947,585	868,080	17.09%
Professional Services	15,804,536	29,554,886	13,750,350	87.00%
Office Space, Utilities & Maint.	4,868,163	2,348,043	(2,520,120)	-51.77%
Capital Expenditures	75,000	75,000	0	0.00%
TOTAL BUDGET	100,506,291	117,413,324	16,907,033	16.82%
 <u>FINANCING METHOD</u>				
Jurisdiction Allocations	99,006,291	115,913,324	16,907,033	17.08%
Interest Income	0	0	0	0.00%
Other Income	0	0	0	0.00%
Application of Restricted Funds	500,000	0	(500,000)	-100.00%
Application of Unrestricted Funds				
General Fund	1,000,000	1,500,000	500,000	50.00%
Internal Service Fund	0	0	0	0.00%
TOTAL FINANCING METHOD	100,506,291	117,413,324	16,907,033	16.82%

GENERAL FUND - LINE ITEM EXPENDITURES BY DEPARTMENT
2024 BUDGET

Account Number	Account Name	TOTAL BUDGET	BOARD OF DIRECTORS	APPRAISAL REVIEW BOARD	OFC CHIEF APPRAISER	DEP CHIEF APPRAISER
	Number of Positions	697.0	0.0	0.0	322.0	375.0
	Part-time & Seasonal FTEs	12.4	0.0	0.0	9.8	2.6
<u>SALARIES, WAGES & RELATED</u>						
	Salaries & Wages	\$48,608,866	0	\$0	\$22,449,080	\$26,159,786
	Allowance for Career Development	225,000	0	0	225,000	0
	Less Salary Lapse	(3,086,904)	0	0	(1,425,628)	(1,661,276)
	Allowance for Salary Adjustment	1,200,000	0	0	1,200,000	0
	Reserve for Longevity	358,955	0	0	165,830	193,125
	Reserve for COLA	1,701,310	0	0	785,718	915,592
	Allowance for Career Ladder	95,000	0	0	95,000	0
3010	Net Salaries & Wages	49,102,227	0	0	23,495,000	25,607,227
3011	ARB Board Members	3,081,000	0	3,081,000	0	0
3020	Shift Differential	32,000	0	0	32,000	0
3030	Overtime	654,001	0	0	545,001	109,000
3040	Part-time & Seasonal Wages	477,441	0	0	396,616	80,825
TOTAL SALARIES, WAGES & RELATED		\$53,346,669	\$0	\$3,081,000	\$24,468,617	\$25,797,052
<u>EMPLOYEE BENEFITS & RELATED</u>						
3501	Group Health Insurance	\$10,062,192	\$0	\$0	\$4,648,531	\$5,413,661
3503	Workers' Compensation Insurance	100,925	0	0	100,925	0
3504	Group Life & LTD Insurance	174,259	0	0	84,252	90,007
3505	Group Dental Insurance	275,176	0	0	127,125	148,051
3506	Group Vision Insurance	75,276	0	0	34,776	40,500
3507	Unemployment Insurance	239,488	0	51,300	86,938	101,250
3520	Retirement	7,981,055	0	0	3,858,744	4,122,311
3526	FICA Medicare	773,528	0	44,675	354,796	374,057
3527	Social Security	217,448	0	191,022	21,415	5,011
TOTAL EMPLOYEE BENEFITS & RELATED		\$19,899,347	\$0	\$286,997	\$9,317,502	\$10,294,848
<u>OFFICE & FIELD OPERATIONS</u>						
4001	Office Supplies	\$161,724	\$500	\$500	\$113,224	\$47,500
4003	Office Equipment Maintenance	52,200	0	0	52,200	0
4011	Communications Services	389,625	0	0	389,625	0
4020	Copier Leases	139,000	0	0	139,000	0
4021	Copier Supplies & Maintenance	134,350	0	0	134,350	0
4030	Mapping Reproduction & Supplies	3,250	0	0	3,250	0
4040	Public Notice Advertising	18,000	0	0	18,000	0
4050	Security Services	350,000	0	0	350,000	0
4060	Field Travel, Vanpool & Other Exp	491,250	3,000	0	84,360	403,890
4070	Appraisal Supplies	12,460	0	0	1,400	11,060
4080	Vehicle Gasoline & Maintenance	34,000	0	0	34,000	0
4090	Records Storage & Supplies	25,000	0	0	25,000	0
4097	Employee Recognition Activities	60,000	0	0	60,000	0
4100	Postage, Mailing, & Handling Svcs.	3,153,042	0	0	3,153,042	0
4200	Professional Registration & Dues	90,000	0	0	90,000	0
4202	Seminars & Other Tuition	396,246	4,000	12,000	340,906	39,340
4212	Education Travel & Expenses	279,963	7,000	0	190,132	82,831
4213	Books, Manuals & Publications	358,284	0	0	64,195	294,089
4501	Printing, Forms, & Stationery	28,400	0	0	28,400	0
4530	Paper, Copier & Printer	65,000	0	0	65,000	0
TOTAL OFFICE & FIELD OPERATIONS		\$6,241,794	\$14,500	\$12,500	\$5,336,084	\$878,710
<u>COMPUTER OPERATIONS</u>						
5009	Minor Equipment-Office & Field Operations	\$449,500	\$0	\$0	\$449,500	\$0
5010	Minor Equipment-Infrastructure	840,000	0	0	840,000	0
5020	Hardware Maintenance & Support	426,300	0	0	426,300	0
5030	Software Maintenance & Support	1,647,200	0	0	1,647,200	0
5040	Computer Supplies	28,000	0	0	28,000	0
5050	Software Subscriptions	2,265,085	0	0	2,265,085	0
5070	Software Purchases	291,500	0	0	291,500	0
TOTAL COMPUTER OPERATIONS		\$5,947,585	\$0	\$0	\$5,947,585	\$0

GENERAL FUND - LINE ITEM EXPENDITURES BY DEPARTMENT
2024 BUDGET

Account Number	Account Name	TOTAL BUDGET	BOARD OF DIRECTORS	APPRAISAL REVIEW BOARD	OFC CHIEF APPRAISER	DEP CHIEF APPRAISER
<u>PROFESSIONAL SERVICES</u>						
5510	Financial Auditing	\$67,080	\$0	\$0	\$67,080	\$0
5520	Legal Services	10,983,967	0	0	10,983,967	0
5525	Arbitration Fees & Services	600,000	0	0	600,000	0
5526	State Office of Admin Hearings	5,000	0	0	5,000	0
5530	Appraisal Services	1,643,114	0	0	0	1,643,114
5550	Other Professional Services	16,255,725	0	0	16,223,725	32,000
TOTAL PROFESSIONAL SERVICES		\$29,554,886	\$0	\$0	\$27,879,772	\$1,675,114
<u>OFFICE SPACE, UTILITIES & RELATED</u>						
6100	Office Space	\$120,000	\$0	\$0	\$120,000	\$0
6150	Utilities	502,000	0	0	502,000	0
6200	Building & Fixture Maintenance	1,520,043	0	0	1,520,043	0
6400	Casualty & Liability Insurance	206,000	0	0	206,000	0
TOTAL OFFICE SPACE, UTILITIES & RELATED		\$2,348,043	\$0	\$0	\$2,348,043	\$0
<u>FIXED ASSETS PURCHASES</u>						
6501	Capital Purchases	\$75,000	\$0	\$0	\$75,000	\$0
TOTAL FIXED ASSETS PURCHASES		\$75,000	\$0	\$0	\$75,000	\$0
TOTAL BUDGET		\$117,413,324	\$14,500	\$3,380,497	\$75,372,603	\$38,645,724

2024 BUDGET WITH COMPARISONS
2023 BUDGET & 2022 ACTUAL

Account Number	Account Name	2022 ACTUAL	2023 BUDGET	2024 BUDGET
	Number of Positions	672	681	697
	Part-time & Seasonal FTEs	7	11	12
<u>SALARIES, WAGES & RELATED</u>				
	Salaries & Wages	\$ 40,275,586	\$43,564,778	\$ 48,608,866
	Allowance for Career Development	0	225,000	225,000
	Less Salary Lapse	0	(2,766,581)	(3,086,904)
	Allowance for Salary Adjustment	0	1,200,000	1,200,000
	Reserve for Longevity	0	350,715	358,955
	Reserve for COLA	0	2,613,888	1,701,310
	Allowance for Career Ladder	0	95,000	95,000
3010	Net Salaries & Wages	\$ 40,275,586	\$45,282,800	\$ 49,102,227
3011	ARB Board Members	2,616,477	3,081,000	3,081,000
3015	Contract & Seasonal Labor	0	0	-
3020	Shift Differential	333,696	32,000	32,000
3030	Overtime	236,294	634,501	654,001
3040	Part-time & Seasonal Wages	330,715	448,636	477,441
TOTAL SALARIES, WAGES & RELATED		\$ 43,792,768	\$49,478,937	\$ 53,346,669
<u>EMPLOYEE BENEFITS & RELATED</u>				
3501	Group Health Insurance	\$ 9,689,032	\$9,831,210	\$ 10,062,192
3503	Workers' Compensation Insurance	87,368	100,925	100,925
3504	Group Life & LTD Insurance	140,079	160,822	174,259
3505	Group Dental Insurance	265,307	268,860	275,176
3506	Group Vision Insurance	36,472	73,548	75,276
3507	Unemployment Insurance	33,632	235,168	239,488
3520	Retirement	8,536,184	7,365,677	7,981,055
3526	FICA Medicare	609,984	717,444	773,528
3527	Social Security	173,131	217,494	217,448
TOTAL EMPLOYEE BENEFITS & RELATED		\$ 19,571,189	\$18,971,148	\$ 19,899,347
<u>OFFICE & FIELD OPERATIONS</u>				
4001	Office Supplies	\$ 111,107	\$162,724	\$ 161,724
4003	Office Equipment Maintenance	37,591	52,200	52,200
4011	Communications Services	389,623	423,304	389,625
4020	Copier Leases	56,452	139,000	139,000
4021	Copier Supplies & Maintenance	85,221	134,350	134,350
4030	Mapping Reproduction & Supplies	0	3,250	3,250
4040	Public Notice Advertising	3,267	18,000	18,000
4050	Security Services	311,633	350,000	350,000
4060	Field Travel, Vanpool & Other Exp	223,206	489,460	491,250
4070	Appraisal Supplies	11,252	12,560	12,460
4080	Vehicle Gasoline & Maintenance	14,941	34,000	34,000
4090	Records Storage & Supplies	12,325	25,000	25,000
4097	Employee Recognition Activities	55,269	60,000	60,000
4100	Postage, Mailing, & Handling Svcs.	3,092,544	3,153,042	3,153,042
4200	Professional Registration & Dues	100,407	90,000	90,000
4202	Seminars & Other Tuition	207,674	381,926	396,246
4212	Education Travel & Expenses	194,996	246,652	279,963
4213	Books, Manuals & Publications	425,226	360,134	358,284
4501	Printing, Forms, & Stationery	37,391	28,400	28,400
4530	Paper, Copier & Printer	64,361	65,000	65,000
TOTAL OFFICE & FIELD OPERATIONS		\$ 5,434,486	\$6,229,002	\$ 6,241,794

2024 BUDGET WITH COMPARISONS
2023 BUDGET & 2022 ACTUAL

Account Number	Account Name	2022 ACTUAL	2023 BUDGET	2024 BUDGET
<u>COMPUTER OPERATIONS</u>				
5009	Minor Equipment-Office & Field Operatio	\$ 417,852	\$396,850	\$ 449,500
5010	Minor Equipment-Infrastructure	8,223	925,000	840,000
5020	Hardware Maintenance & Support	234,660	333,800	426,300
5030	Software Maintenance & Support	1,084,990	1,588,320	1,647,200
5040	Computer Supplies	0	28,000	28,000
5050	Software Subscriptions	1,962,780	1,734,435	2,265,085
5070	Software Purchases	236,465	73,100	291,500
TOTAL COMPUTER OPERATIONS		\$ 3,944,970	\$5,079,505	\$ 5,947,585
<u>PROFESSIONAL SERVICES</u>				
5510	Financial Auditing	\$ 67,763	\$67,080	\$ 67,080
5520	Legal Services	9,870,628	10,983,967	10,983,967
5525	Arbitration Fees & Services	186,500	600,000	600,000
5526	State Office of Admin Hearings	0	5,000	5,000
5530	Appraisal Services	1,530,224	1,643,114	1,643,114
5550	Other Professional Services	1,665,741	2,505,375	16,255,725
TOTAL PROFESSIONAL SERVICES		\$ 13,320,856	\$15,804,536	\$ 29,554,886
<u>OFFICE SPACE, UTILITIES & RELATED</u>				
6100	Office Space	\$ 2,508,646	\$2,692,620	\$ 120,000
6150	Utilities	350,168	502,000	502,000
6200	Building & Fixture Maintenance	1,670,399	1,520,043	1,520,043
6400	Casualty & Liability Insurance	205,986	153,500	206,000
TOTAL OFFICE SPACE, UTILITIES & RELATED		\$ 4,735,199	\$4,868,163	\$ 2,348,043
<u>FIXED ASSETS PURCHASES</u>				
6501	Capital Purchases	\$ 385,333	\$ 75,000	\$ 75,000
TOTAL FIXED ASSETS PURCHASES		\$ 385,333	\$ 75,000	\$ 75,000
TOTAL BUDGET		\$ 91,184,801	\$100,506,291	\$117,413,324

TEXAS PROPERTY TAX CODE SECTION

The following schedules are provided pursuant to Section 6.06(a) of the Texas Property Tax Code:

Schedule of Positions

Schedule of Appraisal Review Board Members

Salary Schedule and Provisions

General Provisions

Employee Benefits Schedule – General & Special Provisions

Appraisal Review Board Provisions

Capital Expenditures

2024 Estimated Cost Allocation to Taxing Units

Schedule of Appraisal District Positions - 2023 Budget

Position	Salary Grade	Number of Positions
Accounts Examiner I	P2	3
Accounts Examiner II	P2	1
Accounts Examiner III	P2	1
Accounts Examiner IV	P2	1
ACIO - Applications	M	1
ACIO - Sys & Infra	M	1
Admin Assist I - DLS	A	1
Admin Assist I - HR	A	1
Admin Assist I - IAD	A	1
Admin Assist II - ASSD	A	1
Admin Assist II - BIPD	A	1
Admin Assist II - CPD	A	1
Admin Assist II - CPD - Val	A	1
Admin Assist II - IAD	A	1
Admin Assist II - RPD	A	2
Admin Assist III - OCA	A	1
Admin Tech I - Doc Cont	A	3
Admin Tech II - BIPD	A	2
Admin Tech II - CPD	A	4
Admin Tech II - DLS	A	1
Admin Tech II - Doc Proc	A	1
Admin Tech II - Mailroom	A	1
Admin Tech II - RPD - Act Res	A	2
Admin Tech III - Ag	A	1
Admin Tech III - BIPD	A	1
Admin Tech III - CPD	A	4
Admin Tech III - JURIS	A	2
Admin Tech IV - COMM	A	1
Admin Tech IV - Doc Proc	A	1
Admin Tech Spec I - Agent	A	1
Admin Tech Spec I - BIPD	A	3
Admin Tech Spec I - DLS	A	1
Admin Tech Spec I - New Sub	A	2
Admin Tech Spec I - Owner Res	A	6
Admin Tech Spec I - Prob Res	A	5
Admin Tech Spec I - RAD	A	2
Admin Tech Spec II - BIPD	A	8
Admin Tech Spec II - New Sub	A	3
Admin Tech Spec II - Owner Res	A	3
Admin Tech Spec II - Prob Res	A	2
Admin Tech Spec II - Protest	A	4
Admin Tech Spec II - RAD	A	1
Admin Tech Spec II - RPD - Act Res	A	4
Admin Tech Spec III - Agent	A	3
Admin Tech Spec III - BIPD	A	4
Admin Tech Spec III - DLS	A	1
Admin Tech Spec III - New Sub	A	3
Admin Tech Spec III - Owner Res	A	3
Admin Tech Spec III - Prob Res	A	3
Admin Tech Spec III - Protest	A	2
Admin Tech Spec III - RAD	A	3
Admin Tech Spec IV - Agent	A	1

Schedule of Appraisal District Positions - 2023 Budget

Position	Salary Grade	Number of Positions
Admin Tech Spec IV - BIPD	A	2
Admin Tech Spec IV - New Sub	A	2
Admin Tech Spec IV - Owner Res	A	1
Admin Tech Spec IV - Prob Res	A	2
Admin Tech Spec V - BIPD	A	1
Admin Tech V - Mailroom	A	1
Administrator I - DLS	P2	1
Administrator I - Systems	T	1
Administrator II - COMM	P2	1
Administrator II - IAD - Operations	P2	1
Administrator II - Systems	T	1
Administrator III - Benefits	P2	1
Administrator III - COMM	P2	1
Administrator III - Database	T	1
Administrator III - HRMS	P2	1
Administrator III - Systems	T	1
Advisor III - Talent Development	P2	1
Analyst I - Applications	T	1
Analyst I - IT	T	1
Analyst I - Systems	T	1
Analyst II - IT	T	2
Analyst II - Software	T	3
Analyst II - Tech Supp	T	1
Analyst III - IT	T	3
Analyst III - Software	T	3
Analyst IV - IT	T	1
Appraiser I - BIPD	P2	7
Appraiser I - CPD	P2	3
Appraiser I - Exemptions	P2	1
Appraiser I - RPD	P2	37
Appraiser II - BIPD	P2	2
Appraiser II - CPD	P2	6
Appraiser II - Exemptions	P2	1
Appraiser II - RPD	P2	16
Appraiser III - BIPD	P2	7
Appraiser III - CPD	P2	8
Appraiser III - Exemptions	P2	5
Appraiser III - RPD	P2	18
Appraiser III - RPD - Act Res	P2	3
Appraiser IV - BIPD	P2	4
Appraiser IV - CPD	P2	5
Appraiser IV - CPD - Ag	P2	3
Appraiser IV - RAD - Arb	P2	8
Appraiser IV - RPD	P2	15
Appraiser IV - RPD - Act Res	P2	8
Assistant Controller	M	1
Assoc Chief Appraiser - Appr Ops	E	1
Assoc Chief Appraiser - BIPD	E	1
Assoc Chief Appraiser - CPD	E	1
Assoc Chief Appraiser - RAD	E	1
Assoc Chief Appraiser - RPD	E	1
Captain	S	1

Schedule of Appraisal District Positions - 2023 Budget

Position	Salary Grade	Number of Positions
Chief Appraiser	E	1
Chief Communications Officer	E	1
Chief Financial Officer	E	1
Chief Human Resources Officer	E	1
Chief Information Officer	E	1
Chief Legal Officer	E	1
Chief of Hearings	E	1
Chief of Operations	E	1
Consulting Appraiser I	P2	6
Consulting Appraiser II	P2	3
Consulting Appraiser III	P2	2
Consulting Appraiser IV	P2	1
Controller	M	1
Coordinator I - ARB Hearings	P1	1
Coordinator I - JURIS	P1	1
Coordinator I - Talent Development	P1	2
Coordinator II - ARB Hearings	A	1
Coordinator II - ARB Support	P1	1
Coordinator II - HR	P1	1
Coordinator II - HRMS	P1	1
Coordinator II - IAD	P1	1
Coordinator III - ARB Ops	P1	1
Coordinator III - JURIS	P1	2
Coordinator III - PIA	P1	1
Coordinator IV - IT	P1	1
Cust Serv Re Spec II - PIA	A	2
Cust Serv Res Spec II - COMM	A	2
Cust Serv Res Spec III - COMM	A	1
Cust Serv Res Spec IV - COMM	A	1
Cust Serv Spec I - ARB Hearings	A	4
Cust Serv Spec I - ARB Support	A	8
Cust Serv Spec I - CS Ctr	A	19
Cust Serv Spec I - CS Intake	A	3
Cust Serv Spec II - ARB Hearings	A	1
Cust Serv Spec II - ARB Support	A	4
Cust Serv Spec II - CS Ctr	A	10
Cust Serv Spec II - CS Intake	A	2
Cust Serv Spec III - ARB Hearings	A	2
Cust Serv Spec III - ARB Support	A	2
Cust Serv Spec III - CS Ctr	A	4
Cust Serv Spec III - CS Intake	A	2
Cust Serv Spec IV - CS Ctr	A	2
Cust Serv Spec IV - CS Intake	A	2
Deputy Chief Appraiser	E	1
Developer II - Bus Intel	T	1
Developer II - Software	T	4
Developer III - IT	T	1
Developer III - Software	T	3
Director - IT	M	1
Director Sr - IAD	E	1
Director Sr - JURIS	E	1
Engineer I - Info Security	T	1

Schedule of Appraisal District Positions - 2023 Budget

Position	Salary Grade	Number of Positions
Engineer I - Network	T	1
Engineer III - Network	T	1
Executive Assistant	A	1
Executive Project Advisor	P2	1
Exemptions Specialist I	A	6
Exemptions Specialist II	A	6
Exemptions Specialist III	A	1
Exemptions Specialist IV	A	2
Exemptions Specialist V	A	1
HR Generalist II	P2	1
Internal Auditor III	P2	1
Legal Counsel I	P2	3
Legal Counsel II	P2	3
Legal Counsel III	P2	3
Lieutenant	S	1
Lieutenant - Sec Training	P1	1
Manager - Acct Maint	M	1
Manager - Agricultural	M	1
Manager - App Dev	M	1
Manager - ARB Hearings	M	1
Manager - Arbitration	M	1
Manager - ASSD	M	1
Manager - BIPD	M	1
Manager - BIPD - Field	M	1
Manager - CPD	M	1
Manager - CPD - Valuation	M	3
Manager - Cust Serv	M	1
Manager - Doc Proc	M	1
Manager - Finance	M	1
Manager - Lit - Consulting	M	1
Manager - Lit - Testifying	M	1
Manager - Purchasing	M	1
Manager - Records Retention	M	1
Manager - RPD - Field	M	2
Manager - RPD - Valuation	M	3
Manager - Security	M	1
Manager - Support	M	1
Manager - Sys Supp	M	1
Manager - Valuation - Ind	M	2
Manager - Valuation - Pers Prop	M	3
Manager App Supp	M	1
Manager Sr - CPD - Field	M	1
Manager Sr - CPD - Valuation	M	1
Manager Sr - HR	M	1
Manager Sr - Litigation	M	1
Manager Sr - RPD - Act Res	M	1
Manager Sr - RPD - Field	M	1
Manager Sr - RPD - Valuation	M	1
Manager Sr - Talent Development	M	1
Manager Sr - Valuation - Ind	M	1
Manager Sr - Valuation - Pers Prop	M	1
Paralegal I	P1	1

Schedule of Appraisal District Positions - 2023 Budget

Position	Salary Grade	Number of Positions
Paralegal II	P1	1
Project Analyst I - AOPS	P2	2
Project Analyst I - ARB Ops	P2	1
Project Analyst I - IAD	P2	1
Project Analyst II - AOPS	P2	1
Project Analyst II - CPD	P2	1
Project Analyst II - RAD	P2	1
Project Analyst III - AOPS	P2	2
Project Analyst III - BIPD	P2	1
Project Analyst III - CPD	P2	1
Project Manager II	P2	1
Recruiter I - HR (return to HR)	P2	1
Recruiter III	P2	1
Research Associate I - Lit - Res	P2	1
Research Associate II - Arb	P2	1
Research Associate II - Lit - Res	P2	1
Research Associate II - RPD	P2	1
Research Associate III - Lit - Res	P2	3
Research Associate III - RPD	P2	2
Security Officer I	P1	5
Security Officer II	P1	1
Security Officer III	P1	1
Specialist I - IT	T	4
Specialist I - Purchasing	P1	1
Specialist I - Tech Supp	T	3
Specialist II - Accounting	P1	2
Specialist II - Doc Cont	P1	1
Specialist II - IT	T	5
Specialist II - Payroll	P1	1
Specialist II - Purchasing	P1	2
Specialist III - Accounting	P1	2
Specialist III - IT	T	1
Specialist III - Tech Supp	T	3
Specialist IV - COMM	P1	1
Specialist IV - IT	T	1
Supervisor - Agent	S	1
Supervisor - Arbitration	S	1
Supervisor - BIPD	S	2
Supervisor - BIPD - Field	S	2
Supervisor - CPD - Field	S	3
Supervisor - CS Ctr	S	1
Supervisor - CS Intake	S	1
Supervisor - Doc Cont	S	1
Supervisor - Hmstd Exempt	S	1
Supervisor - IT	S	1
Supervisor - JURIS	S	1
Supervisor - New Sub	S	1
Supervisor - Owner Res	S	1
Supervisor - Paralegal	S	1
Supervisor - Prob Res	S	1
Supervisor - Protest	S	1
Supervisor - RAD	S	1

Schedule of Appraisal District Positions - 2023 Budget

Position	Salary Grade	Number of Positions
Supervisor - RPD - Field	S	9
Supervisor - Shared Serv	S	1
Supervisor - Ttl Exemptions	S	1
Supervisor Sr - CPD - Field	S	1
Supervisor Sr - Payroll	S	1
Supervisor Sr - RPD - Act Res	S	2
Supervisor Sr - RPD - Field	S	3
Technologist II - COMM	P2	1
Testifying Appraiser I	P2	2
Testifying Appraiser II	P2	7
Testifying Appraiser III	P2	3
Val Analyst I - BIPD - Pers Prop	P2	13
Val Analyst I - RPD	P2	1
Val Analyst II - BIPD - Ind	P2	5
Val Analyst II - BIPD - Pers Prop	P2	5
Val Analyst II - CPD	P2	9
Val Analyst II - RPD	P2	7
Val Analyst III - BIPD - Ind	P2	4
Val Analyst III - BIPD - Pers Prop	P2	1
Val Analyst III - CPD	P2	6
Val Analyst III - RPD	P2	6
Val Analyst IV - BIPD - Pers Prop	P2	2
Val Analyst IV - CPD	P2	9
Val Analyst IV - RPD	P2	4
Val Analyst IV BIPD - Ind	P2	4
Val Analyst V - CPD	P2	3
		697

SCHEDULE OF APPRAISAL REVIEW BOARD MEMBERS
2024 BUDGET

Position	Salary Group	Number of Positions
ARB Member	per diem	190
TOTAL		190

2024 SALARY SCHEDULE AND PROVISIONS

A. Classified Positions Salary Schedule.

Group Name	Group	Minimum	Maximum
Administrative	A	\$25,526	\$92,669
Para-professional	P1	\$35,443	\$94,106
Professional	P2	\$46,688	\$143,986
Technical	T	\$37,371	\$133,065
Supervisor	S	\$50,383	\$107,640
Manager	M	\$66,022	\$136,164
Executive	E	\$93,119	\$378,988

- B. It is expressly provided that the chief appraiser is authorized to grant salary adjustment increases to district employees according to the district’s guidelines under the Salary Adjustment Program. The maximum shall not exceed the amount specifically budgeted as “Allowance for Salary Adjustments”.
- C. The chief appraiser is authorized to award quality service incentives, disbursed as a single payment, to employees according to the district’s guidelines under the Quality Service Incentive Program.
 - 1. This is in recognition of the employee’s high level of performance, which must be supported by documentation;
 - 2. Funding for such incentives will be made only from the overall limits specified under Paragraph C, above; and,
 - 3. A quality service incentive is a one-time payment and does not increase the salary level for the following year.
- D. The chief appraiser is authorized to award a quality service incentive and a salary adjustment increase concurrently.
- E. The chief appraiser may authorize additional salary adjustments according to the district’s guidelines under the Salary Adjustment Program. A salary adjustment may be warranted when there are changes to an employee’s duties and responsibilities, whether or not such changes result in title change, promotion/progression, to address pay equity, or in response to market conditions.
- F. The chief appraiser may substitute other classified position titles for those listed in this Schedule of Positions when the chief appraiser finds that such reclassifications are necessary for effective performance of the district’s responsibilities. The chief appraiser is further authorized to reassign an employee serving in a classified position to another classified position or to move the employee to another salary within the employee’s salary grade as necessary to maintain desirable salary relationships.
- G. Professional Development Program. The chief appraiser is authorized to award achievement pay according to the district’s guidelines under the Professional Development Program.

- H. TDLR Career Ladder Program. The chief appraiser is authorized to promote staff upon reaching levels I, II, III and IV Property Tax Professional Appraiser designations with the Texas Department of Licensing and Regulation (TDLR) and satisfaction of such other requirements as the chief appraiser may impose according to the district's guidelines under the Career Ladder Program.
- I. The chief appraiser is authorized to pay a full-time employee who is a state approved instructor a stipend if the employee teaches state certification courses during a calendar year per the Instructor Stipend Program.
- J. The chief appraiser is authorized to pay salaried exempt employees straight time for compensatory time worked during periods when paid leave is restricted or when the chief appraiser finds it essential for effective performance of critical functions.
- K. The chief appraiser is authorized to pay vacation or compensatory leave hours or both, in excess of the maximum hours that carry over to the next year, limited to unspent budgeted funds.
- L. The chief appraiser is authorized to pay a full-time employee a stipend of up to \$500 for translation services per calendar year to ensure quality services to the limited English proficient populations.

GENERAL PROVISIONS

A. Mileage Allowance.

1. Use of Privately Owned Vehicles. Employees, board members, or persons assigned to the district by another agency under contract who use their privately owned vehicles on official district business are authorized reimbursement at the rate authorized by the Internal Revenue Service as the standard mileage deduction rate (currently \$0.655/mile for 2023).
2. Idling Allowance. Appraisers performing as group leaders, or who are assigned to pre-review, review and quality control functions are authorized an "idling allowance" of \$1.00 per hour in addition to reimbursement for actual mileage as provided in the district's appraisal manual.

B. Expense Allowance. The following listed positions are authorized an expense allowance in lieu of a vehicle allowance, in-district mileage, and incidental in-district expenses at the monthly rate indicated:

Chief Appraiser	\$850
Deputy Chief Appraiser	\$550

C. Uniform Cleaning Reimbursement. Commissioned security officers who are required to regularly wear district-provided uniforms are entitled to reimbursement for the actual cost of professional uniform cleaning in an amount not to exceed \$45.00 per month.

D. Cell Phone Allowance. In lieu of providing a district-owned cellular phone to an employee whose duties require it, the chief appraiser is authorized to pay a monthly cellular phone allowance as follows: \$10 to \$45 per month, depending on the number of minutes of business use projected, for basic cellular service, and an additional \$15 to \$45 per month for data services if the chief appraiser determines that data services are appropriate. An employee who receives a cellular phone allowance under this provision must, at his or her own expense, obtain equipment and cellular services meeting minimum specifications that are approved by the chief appraiser or his designee. The equipment and service must be in working order at all times during the period for which an allowance is paid. The total amount paid under this provision may not exceed the amount allocated in this budget for cellular phone and data services.

E. Travel Expenses.

1. Non-overnight Travel.

- a. The chief appraiser, a member of the board of directors, a district employee, or a person assigned to the district by another agency under contract who has been designated to represent the chief appraiser or a board member, or a district employee who is traveling with the chief appraiser or a board member may receive reimbursement of actual expenses for meals when traveling outside the district's boundaries. The meal receipts must be attached to the travel expense report if the amount claimed for a meal exceeds \$16.00.

- b. Other employees may be reimbursed for meal expenses incurred on a day the employee conducts official business outside the district's boundaries for no fewer than six consecutive hours on the day the expenses are incurred in an amount not to exceed \$69 per day. However, the maximum reimbursement for breakfast may not exceed \$16.00, exceed \$17 for lunch, or exceed \$31 for dinner. Meal receipts must be attached to the travel expense report if the amount claimed for a meal exceeds \$16.00.

2. Overnight Travel.

- a. An employee may be reimbursed on a per diem basis for each day of travel not to exceed the maximum meals and lodging rates based on the federal travel regulations issued by the United States General Services Administration. In lieu of being reimbursed on a per diem basis, a person may elect to be reimbursed in the manner provided for in subsection 2.b. of this section.
- b. Employees and members of the board of directors who elect to do so, may be reimbursed for actual expenses of lodging at a commercial lodging establishment and an allowance for meals in an amount not to exceed the maximum per diem allowance authorized for that locality in the current federal travel regulations unless the chief appraiser determines, in advance of the travel, that local conditions necessitate a change in the lodging rate for a particular location. An employee may reduce the maximum meal reimbursement rate for a locality and use the reduction to increase the maximum lodging reimbursement rate for the locality, and may also be reimbursed for authorized incidental expenses. In calculating the applicable meal allowance for a particular locality, the amounts allowed for the first and last day of travel are reduced to 50% of the daily federal rate if the person begins travel after 1 p.m. on the first day or returns and ends travel before 1 p.m. on the last day.
- c. The chief appraiser, a district employee who is traveling with the chief appraiser or as an official representative of the chief appraiser may receive reimbursement for the actual expenses for meals, lodging, and incidental expenses authorized by this section not to exceed twice the maximum per diem allowance authorized for that locality in the current federal travel regulations.
- d. A person authorized to be reimbursed for overnight travel expenses may receive reimbursement for the person's actual expenses for meals and lodging when traveling outside the continental United States.
- e. Persons who are authorized to claim actual expenses and elect to do so must provide lodging and meal receipts with their travel expense report. An employee who claims expenses on a per diem basis must submit lodging receipts with the travel expense report.
- f. Allowable incidental expenses include taxes levied on lodging, taxi fare, airport limousine service, airport or other parking charges, and business-related telephone calls and/or reasonable internet connection charges. Receipts for incidental expenses must be attached to the travel expense report.

3. Transportation Expenses.
 - a. Employees and board members who travel outside the district by personal auto will be reimbursed for mileage at the same rate used for in-district mileage. Travel must be by the most direct route. If two or more employees are attending the same business function, they should travel together if possible to minimize mileage expense. A person's total mileage reimbursement for a trip may not exceed the cost of round trip air travel by coach or economy class. The chief appraiser may require an employee traveling outside the district to use a district-owned vehicle instead of the employee's personal vehicle or other form of conveyance.
 - b. Persons who travel by air must fly coach or economy class. All flight arrangements should be made through the district's travel coordinator in the Office of Chief Appraiser.
4. Purchase of Alcoholic Beverages Prohibited. A person who travels on official business may not claim reimbursement from district funds for the purchase of alcoholic beverages.
5. Completion of Travel Expense Reports. After completion of authorized out-of-district travel, the person may not be reimbursed for travel expenses until the person submits a written travel report on the form prescribed by the chief appraiser. The form must clearly outline the official purpose of the travel and summarize, on a daily basis, the duties performed and expenses incurred or per diem claimed.
- F. Reappropriations. Monies received by the district as payment for copying charges are reappropriated to the district to offset the cost of making such copies. Monies received by the district under a Grant or Interlocal Contract are appropriated to the district to pay the cost of conducting the activity or activities authorized by such Grant or Contract. To the extent penalties may be imposed under any section of the Tax Code, penalty monies actually received are reappropriated to the district to offset the cost of operations, less any amounts required by law to be remitted to the appropriate taxing units.
- G. Vanpool Subsidy. The district is a member of the METRO STAR Vanpool program. Employees who participate are authorized a monthly subsidy of \$35.00. Participation is limited to an appropriation of \$50,000.
- H. Employee Recognition Activities. There is appropriated the sum of \$60,000 to be used for service awards and other employee recognition activities as approved by the board of directors.
- I. General Counsel. Pursuant to §6.05(j), Property Tax Code, the board may employ a general counsel to the district to serve at the will of the board. The general counsel shall provide counsel directly to the board and perform other duties and responsibilities as determined by the board. The general counsel is entitled to compensation as authorized by the board and funds are provided in Account 5520 - Legal Services.

EMPLOYEE BENEFITS SCHEDULE
GENERAL & SPECIAL PROVISIONS

- A. Health, Dental and Vision Benefits. The district provides health, dental and vision benefits for all full-time regular employees. New employees are covered on the first day of the month following a 30-day waiting period. Under the district's Flexible Benefits Plan, employees may select from a variety of coverage, but must select basic health coverage. The cost of coverage selections under the plan, which exceeds the provided allowance, is borne by the employee. The board of directors determines the amount of the allowance for employees and retirees when health, dental and vision contracts are renewed near the end of the year. Eligible retirees may continue coverage under the district's health plan until age 65 or eligible for Medicare. Retirees eligible for Medicare may enroll in a Medicare Supplement Plan offered by the Texas Association of Counties.
- B. Life and Disability Insurance. The district also provides life and disability insurance to all full-time regular employees. The cost of life and disability insurance for the employee is paid by the district. Employees may purchase additional life, accidental death and AFLAC insurance for themselves and their dependents under the Flexible Benefits Plan. Retirees are not eligible for coverage under the life and disability plans.
- C. Texas County & District Retirement System (TCDRS). This budget provides funding for the employee retirement plan. The employee contribution rate is 7% of salary and the district contribution rate is composed of a TCDRS actuarial determination plus an amount for an annuitant COLA if authorized by the board of directors, and the supplemental death benefit component. The TCDRS Supplemental Death Benefits Fund provides for a lump-sum death benefit payment to the beneficiary of a deceased employee-member equal to a year's salary in addition to a return of the deceased's personal deposits and interest earnings or a Deferred Service Retirement pension benefit. Upon the death of a retired member, the beneficiary is provided a lump-sum payment equal to \$5,000.
- D. Workers' Compensation Insurance. All full-time regular and part-time employees, and members of the board of directors and appraisal review board are protected with workers' compensation insurance. This budget provides coverage through participation in the Texas Municipal League Intergovernmental Risk Pool.
- E. Unemployment Insurance. The district provides unemployment insurance for all district employees.
- F. Social Security. District employees do not participate in the federal Old Age, Survivors, and Disability Insurance (OASDI) program. Part-time employees who are not members of the Texas County & District Retirement System are required to contribute to Social Security. This budget provides for the employer's matching amount.
- G. Federal Medicare Coverage. Most district employees participate in the Medicare portion of the Federal Insurance Contribution Act (Social Security). Employees contribute to this program at a rate of 1.45% of wages paid. Funding is provided in this budget for the employer's matching amount.

- H. Longevity Pay. All full-time regular employees, beginning with the first pay period after their first year of service with the district, are entitled to longevity pay calculated on the basis of \$5.00 per month per year of service, not to exceed \$150.00 per month. Employees returning to employment with the district after a break in service of less than five years are not entitled to longevity pay until after completing one year of continuous service. After the one-year waiting period, the employee's prior service of whole years is included in the calculation of longevity pay.
- I. Sick Leave. All full-time regular employees are entitled to sick leave subject to the following conditions:
1. An employee will earn sick leave entitlement beginning with the first day of employment with the district and ending on the last day of duty. Sick leave entitlement shall be earned at the rate of 3.6920 hours per regular pay period, not to exceed 12 days per year, and shall accumulate with the unused amount of such leave carried forward each pay period. Unpaid time does not earn sick leave.
 2. Sick leave may be taken any time after accrual, subject to the terms set forth in the district's sick leave policy.
 3. An employee who resigns, is dismissed, or separated from district employment may not be paid for unused sick leave, but the estate of a district employee who dies while employed by the district shall be paid one-half of the employee's unused sick leave, or for 80 hours of sick leave, whichever is less.
- J. Employee Vacations. All full-time regular employees are entitled to vacation leave. Such entitlement is calculated on 26 pay periods per year in accordance with the following schedule:

<u>Years of District Service</u>	<u>Hours Earned Per Pay Period</u>	<u>Maximum Hours That Carry Over To Next Year</u>
First 2 years	3.23	168
2 to under 5 years	3.69	288
5 to under 10 years	4.15	324
10 to under 15 years	4.61	360
15 to under 20 years	5.53	432
20 to under 25 years	6.46	504
25 to under 30 years	7.38	576
30 or more years	8.30	647

Vacation with pay may not be granted until the employee has had continuous employment with the district for six months, although credit will be earned during that period. The chief appraiser may authorize additional unpaid vacation leave as a supplement to vacation with pay. An employee who resigns, is dismissed, or separated from district employment is entitled to be paid for all vacation time duly accrued at the time of separation, provided the employee has had continuous employment with the district for six months. For an employee who has a break in service, total HCAD employment is calculated in the same manner as with longevity pay. After a one-year waiting period, the employee's prior service of whole years is included in the calculation of vacation hours.

The chief appraiser may grant vacation accrual to an experienced full-time employee hired at the level of manager or above according to the district's guidelines on Vacation Accrual for Experienced New Employees. This is granted to new employees with minimum 10+ years of proven relevant professional years of experience after satisfactorily completing one year of service. This does not apply to temporary, part-time or seasonal employees.

K. Emergency Leave.

1. The chief appraiser may grant emergency leave of up to three working days to a full-time regular employee because of a death of the employee's spouse, parent, step-parent, child, step-child, brother, sister, grandparent, grandchild, spouse's parent, spouse's children, father-in-law, mother-in-law, brother-in-law, sister-in-law, son-in-law or daughter-in-law. The chief appraiser may grant leave for any other purpose that justifies emergency leave.
2. The Chief Appraiser may grant paid emergency leave of up to fourteen work days per occurrence for an emergency leave as a result of a pandemic illness or an event declared a disaster.

L. Other Paid Leaves. Full-time regular employees of the district are entitled to paid leaves for holidays, military duty, and jury duty in accordance with the district's policy on such leaves.

APPRAISAL REVIEW BOARD PROVISIONS

The Appraisal Review Board of Harris County (ARB) is authorized by Section 6.41 of the Texas Property Tax Code as an entity separate from the Harris Central Appraisal District. The Code contains provisions about the separation of the two entities, and requirements to fund certain activities of the appraisal review board. ARB members are not employees of the district and are not eligible for appointment to the ARB if ever employed by the district. Other restrictions apply.

A. Appraisal Review Board Member Per Diem and Duties and Per Diem of ARB Officers.

1. ARB members are compensated at a flat per diem rate for each full day or half day of service on the appraisal review board that equals or exceeds eight hours, exclusive of lunch. A full day is defined as greater than four hours, exclusive of lunch. A half day is defined as less than four hours, exclusive of lunch. ARB members attending ARB meetings will receive half day per diem. The per diem rate for such members shall be paid as follows:

Years of Board Service	Full Day Per Diem	Half Day Per Diem
Tier 1 - 1st or 2nd Year	\$180 per full day	\$90 per half day
Tier 1 - ALG Leader	\$190 per full day	\$95 per half day
Tier 2 - 3rd or 4th Year	\$195 per full day	\$98 per half day
Tier 2 - ALG Leader	\$205 per full day	\$103 per half day
Tier 3 - 5th Year or more	\$215 per full day	\$107 per half day
Tier 3 - ALG Leader	\$225 per full day	\$112 per half day

The board of directors may provide a per diem of up to \$240 per full day for the chairman and \$230 for the secretary of the ARB. Service shall mean sitting as a member of a panel, participating at a meeting of the full board, or attending training required by law or approved by the board of directors. The board of directors may provide that service for an officer or member of the ARB includes such other activities as the board may prescribe. The chairman of the appraisal review board determines panel and training schedules for ARB members in consultation with the ARB administrator.

2. A member must serve more than four hours, exclusive of lunch, and be discharged for the day by ARB Support personnel or by the ARB Executive office to receive the full day per diem. It is anticipated that members will serve the time required to properly discharge their obligations. For service of four hours or less, a member shall receive the half day per diem. Regardless of the number of hours served in excess of eight in a 24-hour period, a member will not be compensated at more than the full day per diem rate specified above.

- B. Appropriation for ARB Member Per Diem and Related Items
1. Appropriation for ARB member per diem compensation is \$3,081,000.
 2. Appropriation for ARB member coverage for Unemployment Insurance is \$51,300.
 3. Appropriation for the matching portion of OASDI and FICA, is \$235,697.
- C. Appropriation for Appraisal Review Board Attorney. The Appraisal Review Board shall use the services of the county attorney for legal counsel. In the event the county attorney is unable or declines to represent the board in a lawsuit to which the board is made a party, the board may employ and compensate private counsel, subject to a total appropriation of \$5,000.
- D. Appropriation for Clerical Assistance. The appraisal office provides clerical assistance to the appraisal review board, including assisting the board with the scheduling and arranging of hearings. The appropriation for clerical assistance appears elsewhere in this budget.
- E. Appropriation for Texas Comptroller ARB Training. The Property Tax Code provides for the Texas State Comptroller to provide mandatory training of ARB members. The amount of \$12,000 is appropriated for that purpose.
- F. Appropriation for TALCB Licensed Appraiser Instruction. The ARB may contract with a Texas Appraiser Licensing and Certification Board (TALCB) licensed appraiser to instruct the members of the appraisal review board on valuation methodology if an appropriation for the instruction is provided. The amount of \$3,500 is appropriated for that purpose.
- G. A member of the board of directors, the chief appraiser, or any other employee of the district may not communicate with a member of the appraisal review board about a course provided by the Comptroller or any other matter presented or discussed in training. In addition, the Property Tax Code prohibits communication with the appraisal review board by an officer or employee of a taxing unit or by an attorney who represents or whose law firm represents the appraisal district or a taxing unit that participates in the appraisal district.

2024 CAPITAL EXPENDITURES

ORG	ACCT	ITEM	QTY	NEW (N) REPL (R)	UNIT COST	TOTAL COST
8005	6501	Servers, High End	3	R	25,000	75,000
						<u>\$75,000</u>

2024 ESTIMATED COST ALLOCATION TO TAXING UNITS

The Harris Central Appraisal District is funded by the taxing units it serves. As provided in Section 6.06(d), Tax Code, "(E)ach taxing unit participating in the district is allocated a portion of the budget equal to the proportion that the total dollar amount of property taxes imposed in the district by the unit for the tax year in which the budget proposal is prepared bears to the sum of the total dollar amount of property taxes imposed in the district by each participating unit for that year."

Section 6.06(d), Tax Code, requires "(E)ach taxing unit shall pay its allocation in four equal payments to be made at the end of each calendar quarter, and the first payment shall be made before January 1 of the year in which the budget takes effect." It has been the practice of the Harris Central Appraisal District to invoice the taxing units for their quarterly payments approximately 45 days prior to the due date. Since the first quarter billing for 2024 will be prepared and delivered on or about November 15, 2023, and before the time some 2023 tax rates have been determined or received, the first quarter 2024 will be invoiced using incomplete information. The second quarter invoice will reflect the necessary corrections.

This estimate is prepared in May 2023 using 2022 tax rates and levies.

ESTIMATED 2024 COST ALLOCATION TO TAXING UNITS

Jur No.	Taxing Unit	Tax Year	Taxable Value as of 04/14/2023	Tax Rate	Total Levy	Frozen Levy Loss	Adjusted Levy	Allocation Ratio	2024 Budget Allocation
<u>SCHOOL DISTRICTS</u>									
001	HOUSTON ISD	2022	219,460,516,332	1.04	2,276,244,475	61,112,670	2,215,131,805	0.1605586081	18,610,882
002	DEER PARK ISD	2022	12,937,908,209	1.28	165,889,859	1,285,071	164,604,788	0.0119309901	1,382,961
003	WALLER ISD	2022	3,336,235,646	1.29	43,190,907	254,438	42,936,469	0.0031121488	360,740
004	CYPRESS FAIRBANKS ISD	2022	67,855,120,015	1.29	878,588,094	14,361,188	864,226,906	0.0626414504	7,260,979
005	CROSBY ISD	2022	2,810,889,401	1.42	39,996,145	1,465,579	38,530,566	0.0027927973	323,722
006	CHANNELVIEW ISD	2022	5,354,073,244	1.31	69,945,613	1,114,689	68,830,924	0.0049890473	578,297
007	NEW CANEY ISD	2022	81,696,711	1.44	1,178,884	41,412	1,137,472	0.0000824470	9,557
008	ALIEF ISD	2022	19,387,526,923	1.16	225,108,575	5,122,735	219,985,840	0.0159451552	1,848,256
009	ALDINE ISD	2022	26,861,572,327	1.22	328,167,829	5,720,783	322,447,046	0.0233718142	2,709,105
015	GALENA PARK ISD	2022	11,278,947,605	1.35	152,737,253	1,422,026	151,315,227	0.0109677276	1,271,306
016	GOOSE CREEK ISD	2022	12,711,273,843	1.28	162,920,397	1,762,680	161,157,717	0.0116811373	1,353,999
017	KLEIN ISD	2022	28,332,759,971	1.23	348,492,948	9,371,105	339,121,843	0.0245804475	2,849,201
018	HUMBLE ISD	2022	22,535,214,324	1.29	291,357,786	7,517,221	283,840,565	0.0205735144	2,384,744
019	KATY ISD	2022	31,249,417,491	1.30	407,742,399	2,658,440	405,083,959	0.0293615560	3,403,396
020	LA PORTE ISD	2022	14,133,230,788	1.26	177,584,045	1,551,911	176,032,134	0.0127592743	1,478,970
021	PASADENA ISD	2022	19,473,362,409	1.34	260,027,808	8,285,449	251,742,359	0.0182469516	2,115,065
022	SOUTHEAST REGIONAL MGMT DIST DA 1	2022	3,637,347	0.25	9,093	0	9,093	0.0000006591	76
023	SHELDON ISD	2022	6,434,742,017	1.42	91,051,600	319,089	90,732,511	0.0065765322	762,308
024	SPRING ISD	2022	18,578,159,978	1.25	233,081,595	6,308,211	226,773,384	0.0164371343	1,905,283
025	SPRING BRANCH ISD	2022	39,693,752,300	1.27	503,634,329	21,620,230	482,014,099	0.0349376559	4,049,740
026	TOMBALL ISD	2022	14,194,957,950	1.23	174,597,983	3,185,676	171,412,307	0.0124244171	1,440,155
027	CLEAR CREEK ISD	2022	20,500,106,595	1.11	228,494,188	8,069,441	220,424,747	0.0159769683	1,851,944
028	DAYTON ISD	2022	10,481,164	1.15	121,016	737	120,279	0.0000087181	1,011
029	PEARLAND ISD	2022	234,633,328	1.30	3,056,568	323,860	2,732,708	0.0001980739	22,959
030	HUFFMAN ISD	2022	1,787,092,796	1.15	20,539,058	726,135	19,812,923	0.0014360930	166,462
031	STAFFORD MSD	2022	12,858,628	1.10	141,355	4,945	136,410	0.0000098873	1,146
<u>COUNTY-WIDE UNITS</u>									
040	HARRIS COUNTY	2022	579,571,035,334	0.34	1,992,159,520	0	1,992,159,520	0.1443969876	16,737,535
041	HARRIS COUNTY FLOOD CONTROL	2022	567,700,800,773	0.03	173,432,595	0	173,432,595	0.0125708529	1,457,129
042	PORT OF HOUSTON AUTHORITY	2022	567,654,336,725	0.01	45,355,582	0	45,355,582	0.0032874925	381,064
043	HARRIS COUNTY HOSPITAL DIST	2022	567,794,808,522	0.15	842,096,481	0	842,096,481	0.0610373787	7,075,045
044	HARRIS COUNTY DPT OF EDUCATION	2022	579,666,331,159	0.00	28,403,650	0	28,403,650	0.0020587716	238,639
<u>COLLEGE DISTRICTS</u>									
045	LONE STAR COLLEGE SYSTEM DISTRICT	2022	196,717,953,599	0.11	212,061,954	594,709	211,467,245	0.0153277048	1,776,685
046	LEE JR COLLEGE DISTRICT	2022	13,067,052,799	0.22	28,760,583	312,504	28,448,079	0.0020619919	239,012
047	SAN JACINTO COMMUNITY COLLEGE DISTRICT	2022	76,352,012,000	0.16	118,807,548	0	118,807,548	0.0086114851	998,186
048	HOUSTON COMMUNITY COLLEGE SYSTEM	2022	243,491,422,790	0.10	232,702,318	0	232,702,318	0.0168668791	1,955,096
<u>CITIES</u>									
051	CITY OF BAYTOWN	2022	5,479,311,171	0.75	41,094,834	625,887	40,468,947	0.0029332962	340,008

ESTIMATED 2024 COST ALLOCATION TO TAXING UNITS

Jur No.	Taxing Unit	Tax Year	Taxable Value as of 04/14/2023	Tax Rate	Total Levy	Frozen Levy Loss	Adjusted Levy	Allocation Ratio	2024 Budget Allocation
052	CITY OF BELLAIRE	2022	5,159,934,695	0.45	23,080,388	0	23,080,388	0.0016729275	193,915
053	CITY OF BUNKER VILLAGE	2022	2,546,538,369	0.28	7,002,981	0	7,002,981	0.0005075946	58,837
054	CITY OF DEER PARK	2022	3,792,747,937	0.72	27,307,785	1,015,948	26,291,837	0.0019057018	220,896
055	CITY OF HEDWIG VILLAGE	2022	1,266,590,998	0.34	4,298,861	0	4,298,861	0.0003115928	36,118
056	CITY OF EL LAGO	2022	328,354,741	0.44	1,431,157	0	1,431,157	0.0001037340	12,024
057	CITY OF GALENA PARK	2022	859,376,812	0.84	7,193,414	0	7,193,414	0.0005213977	60,437
058	CITY OF FRIENDSWOOD	2022	900,281,768	0.49	4,387,199	9,718	4,377,481	0.0003172914	36,778
059	CITY OF PEARLAND	2022	1,612,440,595	0.62	10,057,840	521,664	9,536,176	0.0006912073	80,120
060	CITY OF HILSHIRE VILLAGE	2022	285,236,772	0.58	1,647,493	0	1,647,493	0.0001194146	13,842
061	CITY OF HOUSTON	2022	284,642,820,589	0.53	1,518,967,948	0	1,518,967,948	0.1100988117	12,761,919
062	CITY OF HUMBLE	2022	2,530,620,983	0.25	6,366,536	0	6,366,536	0.0004614634	53,490
063	CITY OF KATY	2022	1,201,739,672	0.44	5,287,655	0	5,287,655	0.0003832632	44,425
064	CITY OF MISSOURI CITY	2022	564,904,269	0.57	3,241,138	0	3,241,138	0.0002349262	27,231
065	CITY OF HUNTERS CREEK VILLAGE	2022	3,206,328,112	0.19	6,222,906	0	6,222,906	0.0004510527	52,283
066	CITY OF JACINTO CITY	2022	602,842,566	0.66	3,953,924	0	3,953,924	0.0002865909	33,220
067	CITY OF LEAGUE CITY	2022	223,248,205	0.42	927,654	43,347	884,307	0.0000640969	7,430
070	CITY OF JERSEY VILLAGE	2022	1,211,125,079	0.74	8,992,604	0	8,992,604	0.0006518077	75,553
071	CITY OF LA PORTE	2022	5,005,339,209	0.71	35,537,908	591,200	34,946,708	0.0025330298	293,612
072	CITY OF MORGANS POINT	2022	553,818,067	0.95	5,264,467	37,914	5,226,553	0.0003788344	43,912
073	CITY OF NASSAU BAY	2022	764,179,215	0.65	4,959,363	0	4,959,363	0.0003594677	41,667
074	CITY OF PASADENA	2022	13,716,112,211	0.50	68,249,043	179,453	68,069,590	0.0049338638	571,901
075	CITY OF PINEY POINT VILLAGE	2022	2,925,942,395	0.26	7,465,249	0	7,465,249	0.0005411010	62,721
076	CITY OF SEABROOK	2022	1,752,278,518	0.48	8,350,063	73,618	8,276,445	0.0005998986	69,536
077	CITY OF SHOREACRES	2022	154,962,947	0.83	1,280,502	24,940	1,255,562	0.0000910065	10,549
078	CITY OF SOUTH HOUSTON	2022	1,025,148,519	0.63	6,493,373	28,486	6,464,887	0.0004685921	54,316
079	CITY OF SOUTHSIDE PLACE	2022	996,259,204	0.32	3,175,756	0	3,175,756	0.0002301872	26,682
080	CITY OF SPRING VALLEY	2022	1,485,695,944	0.41	6,017,069	0	6,017,069	0.0004361331	50,554
082	CITY OF TAYLOR LAKE VILLAGE	2022	602,284,349	0.24	1,434,039	0	1,434,039	0.0001039429	12,048
083	CITY OF TOMBALL	2022	2,640,270,706	0.29	7,584,125	0	7,584,125	0.0005497174	63,720
084	CITY OF WEBSTER	2022	2,785,855,234	0.36	10,161,407	4,686	10,156,721	0.0007361860	85,334
085	CITY OF WEST UNIVERSITY PLACE	2022	7,261,703,497	0.28	20,144,111	0	20,144,111	0.0014600984	169,245
086	CITY OF WALLER	2022	158,739,539	0.50	798,777	0	798,777	0.0000578975	6,711
<u>SPECIAL DISTRICTS</u>									
011	LAGO BELLO MUD 1A	2022	470,429	1.50	7,056	0	7,056	0.0000005114	59
013	HARRIS COUNTY MUD 491	2022	22,851,075	1.00	228,511	0	228,511	0.0000165631	1,920
014	HARRIS COUNTY MUD 493	2022	4,386,609	1.00	43,866	0	43,866	0.0000031795	369
050	HARRIS COUNTY MUD 165 (DA 2)	2022	69,919,782	0.57	398,543	0	398,543	0.0000288875	3,348
087	HARRIS COUNTY MUD 560	2022	2,883,121	1.50	43,247	0	43,247	0.0000031347	363
090	HARRIS COUNTY MUD 575	2022	75,700,379	0.60	454,202	0	454,202	0.0000329218	3,816
096	HARRIS COUNTY MUD 82 (DA 1)	2022	37,730,523	0.30	113,192	0	113,192	0.0000082045	951

ESTIMATED 2024 COST ALLOCATION TO TAXING UNITS

Jur No.	Taxing Unit	Tax Year	Taxable Value as of 04/14/2023	Tax Rate	Total Levy	Frozen Levy Loss	Adjusted Levy	Allocation Ratio	2024 Budget Allocation
100	HARRIS COUNTY MUD 421	2022	162,740,214	1.25	2,034,253	0	2,034,253	0.0001474480	17,091
101	ADDICKS UD	2022	548,293,671	0.52	2,823,712	0	2,823,712	0.0002046701	23,724
105	HARRIS COUNTY MUD 264	2022	320,073,866	0.37	1,171,470	0	1,171,470	0.0000849112	9,842
106	HARRIS COUNTY MUD 502	2022	754,699,906	1.18	8,905,459	0	8,905,459	0.0006454912	74,821
108	HARRIS COUNTY MUD 255	2022	215,152,816	0.25	536,806	0	536,806	0.0000389091	4,510
110	BAKER ROAD MUD	2022	296,095,375	0.28	835,522	0	835,522	0.0000605608	7,020
111	BAMMEL UD	2022	298,912,804	0.37	1,105,977	0	1,105,977	0.0000801641	9,292
112	BARKER CYPRESS MUD	2022	489,608,479	0.74	3,598,622	0	3,598,622	0.0002608376	30,235
115	HARRIS COUNTY MUD 499	2022	189,638,058	0.82	1,555,032	0	1,555,032	0.0001127128	13,065
116	BEECHNUT MUD	2022	91,872,413	0.55	505,298	0	505,298	0.0000366253	4,245
117	BILMA PUD	2022	595,366,249	0.49	2,917,295	0	2,917,295	0.0002114533	24,510
118	BISSONNET MUD	2022	528,019,850	0.51	2,692,901	0	2,692,901	0.0001951886	22,625
120	WEST RANCH MANAGEMENT DISTRICT	2022	0	0.30	0	0	0	0.0000000000	0
121	BRIDGESTONE MUD	2022	2,069,914,211	0.51	10,531,724	0	10,531,724	0.0007633672	88,484
124	BAYBROOK MUD	2022	442,380,679	1.11	4,910,426	0	4,910,426	0.0003559207	41,256
125	THE WOODLANDS TOWNSHIP	2022	3,739,184,547	0.19	6,917,491	0	6,917,491	0.0005013980	58,119
128	HARRIS COUNTY MUD 250	2022	84,201,500	0.99	833,595	0	833,595	0.0000604212	7,004
129	HARRIS COUNTY MUD 276	2022	482,248,649	0.46	2,218,344	0	2,218,344	0.0001607914	18,638
131	CNP UTILITY DISTRICT	2022	845,421,494	0.26	2,155,825	0	2,155,825	0.0001562599	18,113
134	CASTLEWOOD MUD	2022	314,510,723	0.46	1,446,749	0	1,446,749	0.0001048642	12,155
135	CEDAR BAYOU PARK UD	2022	40,127,162	0.08	33,534	0	33,534	0.0000024306	282
136	CHARTERWOOD MUD	2022	517,139,828	0.37	1,887,560	0	1,887,560	0.0001368153	15,859
137	CHELFORD CITY MUD	2022	217,594,452	0.31	681,071	0	681,071	0.0000493658	5,722
138	CHELFORD ONE MUD	2022	298,636,120	0.46	1,373,726	0	1,373,726	0.0000995713	11,542
139	CHIMNEY HILL MUD	2022	528,977,801	0.67	3,544,151	0	3,544,151	0.0002568894	29,777
140	CIMARRON MUD	2022	1,333,437,948	0.32	4,267,001	0	4,267,001	0.0003092835	35,850
141	CLAY ROAD MUD	2022	292,794,432	0.64	1,859,245	0	1,859,245	0.0001347630	15,621
142	CLEAR LAKE CITY WATER AUTHORITY	2022	7,335,909,777	0.26	19,073,365	0	19,073,365	0.0013824879	160,249
145	CORNERSTONES MUD	2022	444,475,190	0.28	1,233,419	0	1,233,419	0.0000894015	10,363
146	CROSBY MUD	2022	420,469,092	0.42	1,774,380	0	1,774,380	0.0001286118	14,908
147	CY - CHAMP PUD	2022	819,306,887	0.35	2,867,574	0	2,867,574	0.0002078493	24,093
148	CYPRESS CREEK UD	2022	245,440,019	0.30	724,048	0	724,048	0.0000524809	6,083
149	CYPRESS FOREST PUD	2022	819,464,365	0.26	2,149,455	0	2,149,455	0.0001557982	18,059
150	CYPRESS HILL MUD 1	2022	1,173,876,176	0.60	7,043,257	0	7,043,257	0.0005105139	59,175
151	CYPRESS KLEIN UD	2022	348,446,883	0.10	365,172	0	365,172	0.0000264686	3,068
152	CYPRESSWOOD UD	2022	255,122,485	0.31	798,533	0	798,533	0.0000578798	6,709
153	CAMFIELD MUD	2022	22,265,704	0.50	111,329	0	111,329	0.0000080694	935
154	LOWER KIRBY PEARLAND MGMT DIST	2022	471,198,197	0.70	3,298,387	0	3,298,387	0.0002390758	27,712
156	HARRIS COUNTY MUD 278	2022	780,314,530	0.76	5,930,390	0	5,930,390	0.0004298503	49,825
159	HARRIS COUNTY MUD 290	2022	880,587,567	0.72	6,340,230	0	6,340,230	0.0004595566	53,269

ESTIMATED 2024 COST ALLOCATION TO TAXING UNITS

Jur No.	Taxing Unit	Tax Year	Taxable Value as of 04/14/2023	Tax Rate	Total Levy	Frozen Levy Loss	Adjusted Levy	Allocation Ratio	2024 Budget Allocation
161	MEADOWHILL REGIONAL MUD	2022	870,242,680	0.62	5,395,505	0	5,395,505	0.0003910805	45,331
162	DOWDELL PUD	2022	942,653,962	0.78	7,352,701	0	7,352,701	0.0005329432	61,775
163	EL DORADO UD	2022	194,935,212	0.48	933,740	0	933,740	0.0000676799	7,845
164	EMERALD FOREST UD	2022	594,211,805	0.62	3,654,403	0	3,654,403	0.0002648808	30,703
165	ENCANTO REAL UD	2022	395,876,270	0.86	3,384,742	0	3,384,742	0.0002453350	28,438
170	HARRIS COUNTY MUD 286	2022	484,211,798	0.11	551,033	0	551,033	0.0000399403	4,630
171	FALLBROOK UD	2022	325,123,708	0.26	829,065	0	829,065	0.0000600928	6,966
172	FAULKEY GULLY MUD	2022	779,991,803	0.33	2,605,173	0	2,605,173	0.0001888298	21,888
174	FOREST HILLS MUD	2022	177,253,464	0.94	1,666,183	0	1,666,183	0.0001207693	13,999
175	FOUNTAINHEAD MUD	2022	382,855,147	0.45	1,722,848	0	1,722,848	0.0001248766	14,475
176	FRY ROAD MUD	2022	338,747,014	0.36	1,229,652	0	1,229,652	0.0000891284	10,331
177	HARRIS COUNTY MUD 415	2022	63,079,255	0.77	485,710	0	485,710	0.0000352055	4,081
178	HARRIS COUNTY ID 18	2022	2,298,337,477	0.75	17,237,531	0	17,237,531	0.0012494218	144,825
179	HARRIS COUNTY MUD 304	2022	448,077,157	0.67	3,017,352	0	3,017,352	0.0002187056	25,351
180	HARRIS COUNTY MUD 275	2022	118,516,741	0.70	829,617	0	829,617	0.0000601328	6,970
182	GRANT ROAD PUD	2022	499,590,189	0.53	2,647,828	0	2,647,828	0.0001919216	22,246
183	GREENWOOD UD	2022	455,389,215	0.78	3,552,036	0	3,552,036	0.0002574610	29,843
185	GREENS TRAIL MUD	2022	344,938,024	0.20	681,253	0	681,253	0.0000493790	5,724
186	GREENS PARKWAY MUD	2022	782,036,703	0.28	2,189,703	0	2,189,703	0.0001587155	18,397
187	HARRIS COUNTY MUD 287	2022	798,105,967	1.00	7,981,060	0	7,981,060	0.0005784883	67,055
189	HARRIS COUNTY MUD 489	2022	1,221,884,014	0.93	11,363,521	0	11,363,521	0.0008236580	95,473
190	HARRIS COUNTY MUD 284	2022	307,960,341	0.66	2,032,538	0	2,032,538	0.0001473237	17,077
193	HARRIS COUNTY MUD 285	2022	1,082,817,477	0.59	6,388,623	0	6,388,623	0.0004630643	53,675
197	HARRIS COUNTY MUD 401	2022	443,532,729	0.89	3,925,265	0	3,925,265	0.0002845136	32,979
205	HARRIS COUNTY MUD 321	2022	615,464,442	0.93	5,723,819	0	5,723,819	0.0004148775	48,090
206	HARRIS COUNTY FWSD 6	2022	663,448,181	0.20	1,346,189	0	1,346,189	0.0000975753	11,310
207	HARRIS COUNTY MUD 282	2022	367,426,786	0.69	2,535,245	0	2,535,245	0.0001837613	21,300
208	HARRIS COUNTY MUD 316	2022	140,601,956	0.49	688,950	0	688,950	0.0000499369	5,788
213	HARRIS COUNTY MUD 322	2022	428,029,486	0.43	1,840,527	0	1,840,527	0.0001334063	15,464
220	HARRIS COUNTY MUD 342	2022	304,712,597	0.61	1,843,511	0	1,843,511	0.0001336225	15,489
222	HARRIS COUNTY MUD 344	2022	483,484,439	0.67	3,215,172	0	3,215,172	0.0002330442	27,013
224	HARRIS COUNTY MUD 345	2022	638,695,131	0.18	1,117,716	0	1,117,716	0.0000810150	9,391
225	HARRIS COUNTY MUD 346	2022	154,491,021	0.10	154,491	0	154,491	0.0000111979	1,298
227	HARRIS COUNTY FWSD 27	2022	120,947,851	0.59	707,545	0	707,545	0.0000512847	5,945
228	HARRIS COUNTY MUD 404	2022	144,970,580	0.79	1,145,268	0	1,145,268	0.0000830121	9,622
229	HARRIS COUNTY MUD 412	2022	405,808,011	0.74	3,002,979	0	3,002,979	0.0002176639	25,230
230	HARRIS COUNTY MUD 407	2022	128,344,917	0.36	462,042	0	462,042	0.0000334900	3,882
231	HARRIS COUNTY MUD 405	2022	43,172,296	1.22	526,702	0	526,702	0.0000381768	4,425
232	HARRIS COUNTY MUD 433	2022	750,925,437	0.89	6,683,236	0	6,683,236	0.0004844186	56,151
234	HARRIS COUNTY MUD 451	2022	113,430,810	0.90	1,020,877	0	1,020,877	0.0000739959	8,577

ESTIMATED 2024 COST ALLOCATION TO TAXING UNITS

Jur No.	Taxing Unit	Tax Year	Taxable Value as of 04/14/2023	Tax Rate	Total Levy	Frozen Levy Loss	Adjusted Levy	Allocation Ratio	2024 Budget Allocation
235	HARRIS COUNTY MUD 459	2022	230,012,022	0.61	1,391,573	0	1,391,573	0.0001008649	11,692
236	HARRIS COUNTY MUD 416	2022	286,538,648	0.65	1,862,501	0	1,862,501	0.0001349990	15,648
237	HARRIS COUNTY MUD 434	2022	313,661,077	1.17	3,669,835	0	3,669,835	0.0002659993	30,833
238	HARRIS COUNTY MUD 439	2022	39,236,470	0.80	313,892	0	313,892	0.0000227517	2,637
241	HARRIS COUNTY MUD 460	2022	415,163,316	0.74	3,072,209	0	3,072,209	0.0002226818	25,812
242	HARRIS COUNTY MUD 450	2022	370,053,121	0.53	1,961,282	0	1,961,282	0.0001421589	16,478
243	HARRIS COUNTY MUD 480	2022	284,178,301	1.05	2,983,872	0	2,983,872	0.0002162789	25,070
246	HARRIS COUNTY MUD 432	2022	468,053,435	1.26	5,897,473	0	5,897,473	0.0004274644	49,549
247	HARRIS COUNTY FWSD 47	2022	195,663,009	0.75	1,477,060	0	1,477,060	0.0001070612	12,410
248	HARRIS COUNTY MUD 481	2022	214,943,279	1.05	2,256,904	0	2,256,904	0.0001635864	18,962
249	HARRIS COUNTY MUD 406	2022	987,697,849	0.82	8,099,122	0	8,099,122	0.0005870458	68,046
251	HARRIS COUNTY FWSD 51	2022	810,747,699	0.20	1,621,495	0	1,621,495	0.0001175302	13,623
252	CHAMPIONS MUD	2022	425,665,299	0.33	1,383,412	0	1,383,412	0.0001002734	11,623
253	BRAZORIA COUNTY MUD 18	2022	299,164,625	0.23	673,120	0	673,120	0.0000487895	5,655
254	KINGS MANOR MUD	2022	90,848,082	0.57	517,834	0	517,834	0.0000375340	4,351
255	HARRIS COUNTY MUD 501	2022	857,695,592	0.93	7,967,134	0	7,967,134	0.0005774789	66,937
256	HARRIS-BRAZORIA CO MUD 509	2022	393,789,867	0.85	3,347,214	0	3,347,214	0.0002426149	28,122
257	HARRIS COUNTY MUD 500	2022	172,066,132	0.95	1,629,466	0	1,629,466	0.0001181080	13,690
258	HARRIS COUNTY FWSD 58	2022	184,254,914	0.56	1,029,709	0	1,029,709	0.0000746360	8,651
261	HARRIS COUNTY FWSD 61	2022	1,394,080,078	0.28	3,903,424	0	3,903,424	0.0002829305	32,795
264	HARRIS COUNTY ID 1	2022	6,484,582,571	0.14	9,302,134	0	9,302,134	0.0006742433	78,154
276	HARRIS COUNTY MUD 396	2022	459,994,346	0.48	2,207,973	0	2,207,973	0.0001600397	18,551
301	HARRIS COUNTY MUD 1	2022	1,144,431,801	0.67	7,667,693	0	7,667,693	0.0005557747	64,422
305	HARRIS COUNTY MUD 5	2022	304,853,236	0.83	2,530,282	0	2,530,282	0.0001834015	21,259
306	HARRIS COUNTY MUD 6	2022	248,278,745	0.45	1,112,289	0	1,112,289	0.0000806216	9,345
308	HARRIS COUNTY MUD 8	2022	255,688,356	0.34	875,605	0	875,605	0.0000634662	7,357
311	HARRIS COUNTY MUD 11	2022	241,286,697	0.70	1,676,943	0	1,676,943	0.0001215493	14,089
313	CLEAR BROOK CITY MUD	2022	1,361,977,530	0.54	7,354,679	0	7,354,679	0.0005330866	61,792
316	HARRIS COUNTY MUD 16	2022	252,203,808	0.56	1,399,731	0	1,399,731	0.0001014562	11,760
318	HARRIS COUNTY MUD 18	2022	386,133,253	0.33	1,281,074	0	1,281,074	0.0000928556	10,763
319	HARRIS COUNTY MUD 494	2022	272,077,159	1.02	2,775,187	0	2,775,187	0.0002011529	23,316
321	HARRIS COUNTY MUD 461	2022	422,813,045	0.75	3,171,098	0	3,171,098	0.0002298496	26,643
323	HARRIS COUNTY MUD 23	2022	251,385,856	0.40	992,974	0	992,974	0.0000719734	8,343
324	HARRIS COUNTY MUD 24	2022	1,083,187,224	0.42	4,549,386	0	4,549,386	0.0003297515	38,223
325	HARRIS COUNTY MUD 25	2022	79,778,859	0.81	646,209	0	646,209	0.0000468389	5,429
326	HARRIS COUNTY MUD 26	2022	1,142,635,577	0.64	7,255,736	0	7,255,736	0.0005259149	60,961
327	HARRIS-WALLER CO MUD 2	2022	57,742,243	0.87	502,358	0	502,358	0.0000364122	4,221
331	HARRIS COUNTY MUD 529	2022	198,205,441	0.61	1,209,053	0	1,209,053	0.0000876354	10,158
332	HARRIS COUNTY MUD 449	2022	693,042,755	1.16	8,039,296	0	8,039,296	0.0005827094	67,544
333	HARRIS COUNTY MUD 33	2022	310,772,177	0.60	1,864,633	0	1,864,633	0.0001351535	15,666

ESTIMATED 2024 COST ALLOCATION TO TAXING UNITS

Jur No.	Taxing Unit	Tax Year	Taxable Value as of 04/14/2023	Tax Rate	Total Levy	Frozen Levy Loss	Adjusted Levy	Allocation Ratio	2024 Budget Allocation
334	HARRIS COUNTY WCID 159	2022	851,702,802	0.42	3,577,152	0	3,577,152	0.0002592814	30,054
336	HARRIS COUNTY MUD 36	2022	892,593,824	0.15	1,338,891	0	1,338,891	0.0000970464	11,249
337	HARRIS COUNTY MUD 504	2022	707,024,823	1.18	8,342,893	0	8,342,893	0.0006047149	70,095
338	HARRIS COUNTY ID 12	2022	22,556,785	0.55	123,604	0	123,604	0.0000089591	1,038
339	HARRIS COUNTY MUD 530	2022	317,806,978	1.15	3,654,780	0	3,654,780	0.0002649081	30,706
340	HARRIS COUNTY MUD 531	2022	259,534,726	1.18	3,062,510	0	3,062,510	0.0002219788	25,730
341	PEARLAND MUNICIPAL MGMT DIST 2	2022	21,340,310	0.08	16,039	0	16,039	0.0000011625	135
342	HARRIS COUNTY MUD 422	2022	91,024,771	1.50	1,365,372	0	1,365,372	0.0000989658	11,471
343	HARRIS COUNTY MUD 43	2022	358,735,304	0.44	1,576,642	0	1,576,642	0.0001142792	13,246
344	HARRIS COUNTY MUD 44	2022	205,680,747	0.23	473,066	0	473,066	0.0000342891	3,975
345	HARRIS COUNTY ID 18 (DA 1)	2022	1,151,496,294	0.20	2,302,993	0	2,302,993	0.0001669270	19,349
346	HARRIS COUNTY MUD 46	2022	309,407,538	0.34	1,042,703	0	1,042,703	0.0000755779	8,760
347	NORTHAMPTON MUD (DA)	2022	190,637,334	0.64	1,220,079	0	1,220,079	0.0000884346	10,251
348	HARRIS COUNTY MUD 48	2022	48,547,788	0.46	222,562	0	222,562	0.0000161319	1,870
349	HARRIS COUNTY MUD 49	2022	793,100,741	0.81	6,424,116	0	6,424,116	0.0004656369	53,974
350	HARRIS COUNTY MUD 50	2022	216,748,176	0.93	2,007,088	0	2,007,088	0.0001454790	16,863
351	HARRIS COUNTY WCID 161	2022	499,029,212	0.77	3,842,525	0	3,842,525	0.0002785164	32,284
353	HARRIS COUNTY MUD 53	2022	1,159,463,302	0.33	3,826,229	0	3,826,229	0.0002773352	32,147
354	HARRIS-WALLER CO MUD 3	2022	134,328	0.93	1,249	0	1,249	0.0000000905	10
355	HARRIS COUNTY MUD 55	2022	1,239,408,574	0.40	4,957,634	0	4,957,634	0.0003593424	41,653
356	HARRIS COUNTY MUD 495	2022	808,369,310	1.15	9,296,247	0	9,296,247	0.0006738166	78,104
357	INTERCONTINENTAL MUD	2022	61,730,834	1.25	771,635	0	771,635	0.0000559301	6,483
358	HARRIS COUNTY MUD 58	2022	105,537,802	0.63	666,999	0	666,999	0.0000483459	5,604
359	HARRIS COUNTY MUD 537	2022	245,952,240	0.50	1,229,761	0	1,229,761	0.0000891363	10,332
360	HARRIS COUNTY MUD 319	2022	357,727,548	1.38	4,918,754	0	4,918,754	0.0003565243	41,326
361	HARRIS COUNTY MUD 61	2022	471,076,380	0.45	2,119,844	0	2,119,844	0.0001536519	17,810
362	HARRIS COUNTY MUD 62	2022	252,997,835	0.56	1,421,848	0	1,421,848	0.0001030593	11,946
363	HARRIS COUNTY MUD 63	2022	586,729,174	0.18	1,026,776	0	1,026,776	0.0000744234	8,627
364	HARRIS COUNTY MUD 64	2022	465,367,085	0.50	2,326,835	0	2,326,835	0.0001686552	19,549
365	HARRIS COUNTY MUD 65	2022	526,288,280	0.52	2,720,910	0	2,720,910	0.0001972187	22,860
366	GENERATION PARK MGMT DIST	2022	956,829,008	1.33	12,725,826	0	12,725,826	0.0009224015	106,919
368	HARRIS COUNTY ID 015	2022	116,145,898	1.25	1,451,824	0	1,451,824	0.0001052320	12,198
369	HARRIS COUNTY MUD 69	2022	262,599,175	0.33	853,867	0	853,867	0.0000618905	7,174
370	HARRIS COUNTY MUD 70	2022	464,487,765	0.57	2,647,580	0	2,647,580	0.0001919036	22,244
371	HARRIS COUNTY MUD 71	2022	1,083,296,939	0.77	8,341,386	0	8,341,386	0.0006046057	70,082
372	HARRIS COUNTY MUD 438	2022	149,705,987	0.65	970,095	0	970,095	0.0000703150	8,150
374	HARRIS COUNTY MUD 213A	2022	108,787,692	1.45	1,577,422	0	1,577,422	0.0001143357	13,253
375	HARRIS COUNTY MUD 213B	2022	100,361,593	0.80	802,893	0	802,893	0.0000581958	6,746
376	HARRIS COUNTY MUD 457	2022	726,964,766	1.43	10,395,596	0	10,395,596	0.0007535003	87,341
378	HARRIS COUNTY MUD 458	2022	26,404,753	1.18	311,576	0	311,576	0.0000225839	2,618

ESTIMATED 2024 COST ALLOCATION TO TAXING UNITS

Jur No.	Taxing Unit	Tax Year	Taxable Value as of 04/14/2023	Tax Rate	Total Levy	Frozen Levy Loss	Adjusted Levy	Allocation Ratio	2024 Budget Allocation
379	HARRIS COUNTY MUD 381	2022	237,579,792	0.48	1,140,383	0	1,140,383	0.0000826580	9,581
381	HARRIS COUNTY MUD 81	2022	778,157,556	0.28	2,139,933	0	2,139,933	0.0001551080	17,979
382	HARRIS COUNTY MUD 82	2022	1,000,505,698	0.68	6,753,413	0	6,753,413	0.0004895052	56,740
383	HARRIS COUNTY MUD 383	2022	831,764,985	0.60	5,028,019	0	5,028,019	0.0003644441	42,244
384	HARRIS COUNTY MUD 397	2022	469,385,032	0.50	2,346,925	0	2,346,925	0.0001701113	19,718
385	HARRIS COUNTY MUD 399	2022	211,280,372	0.79	1,669,115	0	1,669,115	0.0001209819	14,023
386	HARRIS COUNTY MUD 86	2022	328,406,154	0.60	1,980,289	0	1,980,289	0.0001435366	16,638
387	HARRIS COUNTY MUD 391	2022	819,565,538	0.91	7,458,046	0	7,458,046	0.0005405789	62,660
388	HARRIS COUNTY MUD 393	2022	265,097,518	0.49	1,298,978	0	1,298,978	0.0000941534	10,914
389	HARRIS COUNTY MUD 400	2022	1,094,977,695	0.65	7,117,355	0	7,117,355	0.0005158847	59,798
392	HARRIS COUNTY MUD 411	2022	160,724,776	0.53	851,841	0	851,841	0.0000617437	7,157
394	HARRIS COUNTY MUD 410	2022	354,042,199	0.54	1,911,828	0	1,911,828	0.0001385743	16,063
395	HARRIS MONTGMRY CO MUD 386	2022	3,754,924,308	0.45	16,897,159	0	16,897,159	0.0012247507	141,965
396	HARRIS COUNTY MUD 96	2022	453,614,340	0.65	2,948,493	0	2,948,493	0.0002137146	24,772
399	HARRIS COUNTY MUD 420	2022	123,809,986	1.17	1,448,577	0	1,448,577	0.0001049967	12,171
400	HARRIS COUNTY RID 1	2022	174,567,889	0.26	453,877	0	453,877	0.0000328982	3,813
402	HARRIS COUNTY MUD 102	2022	657,595,971	0.47	3,057,821	0	3,057,821	0.0002216389	25,691
404	HARRIS COUNTY MUD 104	2022	397,153,094	0.39	1,548,897	0	1,548,897	0.0001122681	13,013
405	HARRIS COUNTY MUD 105	2022	1,031,287,428	0.69	7,115,883	0	7,115,883	0.0005157780	59,786
406	HARRIS COUNTY MUD 106	2022	440,818,706	0.78	3,448,525	0	3,448,525	0.0002499582	28,973
408	BAUER LANDING WCID	2022	298,441,227	0.73	2,178,621	0	2,178,621	0.0001579122	18,304
409	HARRIS COUNTY MUD 109	2022	801,000,829	0.47	3,764,704	0	3,764,704	0.0002728757	31,630
410	SOUTHEAST REGIONAL MGMT DISTRICT	2022	37,636,066	1.25	470,451	0	470,451	0.0000340995	3,953
411	HARRIS COUNTY MUD 536	2022	484,913,988	1.40	6,788,796	0	6,788,796	0.0004920699	57,037
412	DOWDELL PUD (DA)	2022	124,164,728	0.38	471,826	0	471,826	0.0000341992	3,964
413	HARRIS COUNTY MUD 525	2022	2,743,680	1.35	37,040	0	37,040	0.0000026848	311
414	HARRIS COUNTY MUD 542	2022	169,410,957	1.21	2,049,873	0	2,049,873	0.0001485802	17,222
416	HARRIS COUNTY MUD 503	2022	17,384,999	1.50	260,775	0	260,775	0.0000189017	2,191
417	INTERCONTINENTAL CROSSING MUD	2022	109,445,903	0.95	1,039,736	0	1,039,736	0.0000753628	8,736
418	HARRIS COUNTY MUD 118	2022	368,659,747	0.46	1,695,835	0	1,695,835	0.0001229186	14,248
419	HARRIS COUNTY MUD 119	2022	303,421,684	0.41	1,234,926	0	1,234,926	0.0000895107	10,375
420	HARRIS COUNTY MUD 120	2022	644,513,675	0.40	2,590,945	0	2,590,945	0.0001877985	21,768
421	THE WOODLANDS ROAD UD 1	2022	42,306,512	0.16	67,690	0	67,690	0.0000049064	569
422	HARRIS COUNTY MUD 122	2022	165,566,083	0.57	940,415	0	940,415	0.0000681638	7,901
424	HARRIS COUNTY ID 13	2022	7,655,883	1.00	76,559	0	76,559	0.0000055492	643
425	HARRIS COUNTY ID 14	2022	33,396,131	1.35	450,848	0	450,848	0.0000326787	3,788
427	HARRIS COUNTY MUD 127	2022	546,295,439	0.49	2,676,848	0	2,676,848	0.0001940250	22,490
428	SAINT GEORGE PLACE MGMT DIST	2022	425,858,340	0.12	489,737	0	489,737	0.0000354974	4,115
429	HARRIS COUNTY ID 23	2022	39,634,801	0.25	99,087	0	99,087	0.0000071821	833
430	HARRIS COUNTY MUD 130	2022	673,003,463	0.29	1,951,710	0	1,951,710	0.0001414651	16,398

ESTIMATED 2024 COST ALLOCATION TO TAXING UNITS

Jur No.	Taxing Unit	Tax Year	Taxable Value as of 04/14/2023	Tax Rate	Total Levy	Frozen Levy Loss	Adjusted Levy	Allocation Ratio	2024 Budget Allocation
431	HARRIS COUNTY MUD 552	2022	151,719,194	0.75	1,137,894	0	1,137,894	0.0000824776	9,560
432	HARRIS COUNTY MUD 132	2022	745,627,034	0.08	566,677	0	566,677	0.0000410742	4,761
433	HARRIS COUNTY MUD 423	2022	318,785,758	1.33	4,239,851	0	4,239,851	0.0003073156	35,622
435	HARRIS COUNTY MUD 551	2022	102,296,631	1.28	1,309,397	0	1,309,397	0.0000949086	11,001
436	HARRIS COUNTY MUD 136	2022	300,873,323	0.16	466,354	0	466,354	0.0000338026	3,918
438	NEWPORT MUD (DA)	2022	3,192,232	1.40	44,691	0	44,691	0.0000032393	375
441	HARRIS COUNTY MUD 538	2022	142,793,463	1.38	1,963,410	0	1,963,410	0.0001423131	16,496
442	HARRIS COUNTY MUD 473	2022	132,837,468	0.80	1,062,700	0	1,062,700	0.0000770273	8,928
443	HARRIS COUNTY FWSD 48	2022	3,102,379	1.50	46,536	0	46,536	0.0000033731	391
444	HARRIS COUNTY MUD 144	2022	226,189,963	0.48	1,085,712	0	1,085,712	0.0000786953	9,122
447	HARRIS COUNTY MUD 147	2022	181,575,536	0.48	878,099	0	878,099	0.0000636469	7,378
448	HARRIS COUNTY MUD 148	2022	319,521,799	0.85	2,712,740	0	2,712,740	0.0001966266	22,792
449	HARRIS COUNTY MUD 149	2022	259,499,354	0.51	1,310,472	0	1,310,472	0.0000949865	11,010
450	HARRIS COUNTY MUD 150	2022	412,209,598	0.57	2,349,595	0	2,349,595	0.0001703049	19,741
451	HARRIS COUNTY MUD 151	2022	635,366,335	0.30	1,931,514	0	1,931,514	0.0001400012	16,228
452	HARRIS COUNTY MUD 152	2022	694,932,949	0.25	1,719,959	0	1,719,959	0.0001246672	14,451
453	HARRIS COUNTY MUD 153	2022	1,023,587,106	0.43	4,359,457	0	4,359,457	0.0003159850	36,627
454	HARRIS COUNTY MUD 154	2022	583,776,516	0.57	3,350,293	0	3,350,293	0.0002428381	28,148
455	HARRIS COUNTY MUD 155	2022	198,406,122	0.74	1,458,285	0	1,458,285	0.0001057004	12,252
456	HARRIS COUNTY MUD 156	2022	273,425,492	0.68	1,870,230	0	1,870,230	0.0001355592	15,713
457	HARRIS COUNTY MUD 157	2022	948,488,229	0.59	5,596,081	0	5,596,081	0.0004056187	47,017
458	HARRIS COUNTY MUD 158	2022	517,883,239	0.39	2,019,745	0	2,019,745	0.0001463965	16,969
460	HARRIS COUNTY MUD 518	2022	69,132,062	0.85	587,623	0	587,623	0.0000425925	4,937
462	HARRIS COUNTY MUD 162	2022	228,451,917	0.44	1,002,904	0	1,002,904	0.0000726931	8,426
463	HARRIS COUNTY MUD 163	2022	428,625,616	0.16	699,946	0	699,946	0.0000507339	5,881
464	BRAZORIA MUD 23	2022	0	0.44	0	0	0	0.0000000000	0
465	HARRIS COUNTY MUD 165	2022	2,395,247,363	0.93	22,275,800	0	22,275,800	0.0016146089	187,155
466	HARRIS COUNTY MUD 166	2022	277,393,359	0.71	1,969,493	0	1,969,493	0.0001427541	16,547
467	HARRIS COUNTY MUD 167	2022	1,080,464,234	0.88	9,454,062	0	9,454,062	0.0006852554	79,430
468	HARRIS COUNTY MUD 168	2022	677,335,926	0.42	2,844,811	0	2,844,811	0.0002061994	23,901
470	HARRIS COUNTY MUD 170	2022	159,656,383	0.33	526,866	0	526,866	0.0000381886	4,427
471	HARRIS COUNTY MUD 171	2022	27,890,564	1.39	387,679	0	387,679	0.0000281000	3,257
472	HARRIS COUNTY MUD 172	2022	444,334,972	0.66	2,914,837	0	2,914,837	0.0002112751	24,490
473	HARRIS COUNTY MUD 173	2022	444,023,421	0.42	1,870,893	0	1,870,893	0.0001356073	15,719
474	HARRIS COUNTY MUD 565	2022	55,423,135	1.45	803,635	0	803,635	0.0000582496	6,752
476	HARRIS COUNTY MUD 561	2022	202,918,078	0.79	1,603,053	0	1,603,053	0.0001161935	13,468
478	HARRIS COUNTY MUD 558	2022	283,928,517	1.27	3,605,892	0	3,605,892	0.0002613646	30,296
479	HARRIS COUNTY MUD 179	2022	249,960,942	0.24	596,707	0	596,707	0.0000432509	5,013
480	HARRIS COUNTY MUD 180	2022	378,078,349	0.75	2,839,368	0	2,839,368	0.0002058049	23,856
482	HARRIS COUNTY MUD 182	2022	103,418,079	0.40	413,672	0	413,672	0.0000299840	3,476

ESTIMATED 2024 COST ALLOCATION TO TAXING UNITS

Jur No.	Taxing Unit	Tax Year	Taxable Value as of 04/14/2023	Tax Rate	Total Levy	Frozen Levy Loss	Adjusted Levy	Allocation Ratio	2024 Budget Allocation
483	HARRIS COUNTY MUD 183	2022	317,957,456	0.46	1,446,706	0	1,446,706	0.0001048611	12,155
484	HARRIS COUNTY MUD 382	2022	244,566,951	0.44	1,076,095	0	1,076,095	0.0000779982	9,041
485	HARRIS COUNTY MUD 185	2022	173,091,380	0.42	722,657	0	722,657	0.0000523801	6,072
486	HARRIS COUNTY MUD 186	2022	380,238,552	0.20	744,507	0	744,507	0.0000539638	6,255
487	HARRIS COUNTY MUD 465	2022	53,915,258	1.45	781,771	0	781,771	0.0000566648	6,568
488	HARRIS COUNTY MUD 188	2022	559,461,047	0.35	1,958,114	0	1,958,114	0.0001419293	16,451
489	HARRIS COUNTY MUD 189	2022	352,301,569	0.45	1,585,357	0	1,585,357	0.0001149109	13,320
490	HARRIS COUNTY MUD 390	2022	712,490,756	0.66	4,727,376	0	4,727,376	0.0003426527	39,718
491	HARRIS COUNTY MUD 191	2022	437,570,563	0.23	993,285	0	993,285	0.0000719959	8,345
493	HARRIS COUNTY MUD 389	2022	237,719,542	0.79	1,877,984	0	1,877,984	0.0001361212	15,778
496	HARRIS COUNTY MUD 196	2022	732,403,507	0.55	4,028,219	0	4,028,219	0.0002919760	33,844
498	HARRIS COUNTY MUD 418	2022	12,352,225	1.00	123,522	0	123,522	0.0000089532	1,038
500	HARRIS COUNTY MUD 200	2022	477,069,643	0.57	2,731,224	0	2,731,224	0.0001979663	22,947
501	HARRIS COUNTY MUD 374	2022	599,420,820	0.63	3,776,351	0	3,776,351	0.0002737199	31,728
502	HARRIS COUNTY MUD 202	2022	224,823,178	1.25	2,810,290	0	2,810,290	0.0002036972	23,611
504	HARRIS COUNTY MUD 371	2022	374,884,152	0.78	2,916,599	0	2,916,599	0.0002114028	24,504
505	HARRIS COUNTY MUD 205	2022	103,036,133	0.52	530,636	0	530,636	0.0000384619	4,458
506	HARRIS COUNTY MUD 419	2022	1,552,287,978	0.89	13,815,363	0	13,815,363	0.0010013740	116,073
507	HARRIS COUNTY MUD 468	2022	796,750,272	0.50	3,943,914	0	3,943,914	0.0002858653	33,136
508	HARRIS COUNTY MUD 208	2022	308,909,364	0.36	1,112,074	0	1,112,074	0.0000806061	9,343
509	HARRIS COUNTY MUD 372	2022	842,352,622	0.16	1,367,981	0	1,367,981	0.0000991549	11,493
510	HARRIS COUNTY MUD 373	2022	208,238,235	0.19	395,653	0	395,653	0.0000286780	3,324
511	HARRIS COUNTY MUD 211	2022	85,049,565	0.40	340,198	0	340,198	0.0000246585	2,858
514	HARRIS COUNTY MUD 220	2022	196,506,526	0.72	1,414,847	0	1,414,847	0.0001025519	11,887
515	HARRIS COUNTY MUD 215	2022	77,608,743	0.50	388,044	0	388,044	0.0000281265	3,260
516	HARRIS COUNTY MUD 216	2022	318,613,996	0.48	1,529,347	0	1,529,347	0.0001108511	12,849
517	HARRIS COUNTY MUD 217	2022	159,672,750	0.88	1,405,120	0	1,405,120	0.0001018468	11,805
519	HARRIS COUNTY MUD 341	2022	375,369,744	0.35	1,313,794	0	1,313,794	0.0000952273	11,038
520	HARRIS COUNTY MUD 370	2022	728,057,072	0.32	2,329,783	0	2,329,783	0.0001688688	19,574
521	HARRIS COUNTY MUD 221	2022	460,635,230	0.35	1,589,192	0	1,589,192	0.0001151888	13,352
522	HARRIS COUNTY MUD 222	2022	504,572,582	0.25	1,261,431	0	1,261,431	0.0000914319	10,598
524	HARRIS COUNTY MUD 354	2022	700,819,683	0.38	2,663,115	0	2,663,115	0.0001930296	22,375
525	HARRIS COUNTY MUD 355	2022	756,877,934	0.06	423,852	0	423,852	0.0000307219	3,561
526	HARRIS COUNTY MUD 367	2022	755,317,527	0.47	3,512,227	0	3,512,227	0.0002545755	29,509
527	HARRIS COUNTY MUD 359	2022	332,440,357	0.11	365,684	0	365,684	0.0000265057	3,072
528	HARRIS COUNTY MUD 358	2022	442,980,445	0.61	2,702,181	0	2,702,181	0.0001958612	22,703
529	HARRIS COUNTY MUD 360	2022	592,643,249	0.31	1,837,194	0	1,837,194	0.0001331647	15,436
530	HARRIS COUNTY MUD 230	2022	596,780,697	0.40	2,387,123	0	2,387,123	0.0001730250	20,056
531	HARRIS COUNTY MUD 231	2022	25,174,712	1.00	251,747	0	251,747	0.0000182473	2,115
532	HARRIS COUNTY MUD 361	2022	364,765,978	0.70	2,553,362	0	2,553,362	0.0001850744	21,453

ESTIMATED 2024 COST ALLOCATION TO TAXING UNITS

Jur No.	Taxing Unit	Tax Year	Taxable Value as of 04/14/2023	Tax Rate	Total Levy	Frozen Levy Loss	Adjusted Levy	Allocation Ratio	2024 Budget Allocation
533	HARRIS COUNTY MUD 233	2022	135,144,238	0.60	810,865	0	810,865	0.0000587736	6,813
534	HARRIS COUNTY MUD 364	2022	646,911,550	0.40	2,555,301	0	2,555,301	0.0001852150	21,469
535	HARRIS COUNTY MUD 365	2022	628,183,709	0.41	2,575,553	0	2,575,553	0.0001866829	21,639
538	HARRIS COUNTY MUD 238	2022	615,796,542	0.44	2,694,110	0	2,694,110	0.0001952762	22,635
539	HARRIS COUNTY MUD 239	2022	445,615,343	0.55	2,465,590	0	2,465,590	0.0001787125	20,715
541	HARRIS COUNTY MUD 257	2022	346,586,899	0.54	1,854,240	0	1,854,240	0.0001344002	15,579
542	HARRIS COUNTY MUD 261	2022	158,100,420	0.48	760,937	0	760,937	0.0000551547	6,393
544	HARRIS COUNTY MUD 280	2022	282,789,340	0.58	1,640,178	0	1,640,178	0.0001188844	13,780
545	HARRIS COUNTY MUD 281	2022	360,026,286	0.48	1,720,926	0	1,720,926	0.0001247373	14,459
548	HARRIS COUNTY MUD 248	2022	655,018,355	0.46	3,013,084	0	3,013,084	0.0002183963	25,315
549	HARRIS COUNTY MUD 249	2022	343,526,793	0.75	2,576,451	0	2,576,451	0.0001867480	21,647
550	HARRIS COUNTY ESD 7	2022	17,642,994,675	0.09	16,566,772	0	16,566,772	0.0012008034	139,189
555	HARRIS COUNTY MUD 366	2022	243,231,677	0.16	389,171	0	389,171	0.0000282081	3,270
556	HARRIS COUNTY UD 6	2022	646,093,298	0.24	1,518,319	0	1,518,319	0.0001100518	12,756
557	HARRIS COUNTY MUD 165 (DA 1)	2022	109,619,752	0.57	624,833	0	624,833	0.0000452895	5,250
559	HARRIS COUNTY MUD 528	2022	25,244,340	0.68	171,662	0	171,662	0.0000124425	1,442
564	HARRIS COUNTY UD 14	2022	488,743,072	0.11	537,617	0	537,617	0.0000389679	4,517
565	HARRIS COUNTY UD 15	2022	328,448,683	0.55	1,790,045	0	1,790,045	0.0001297472	15,039
566	HARRIS COUNTY UD 16	2022	420,397,858	0.67	2,816,666	0	2,816,666	0.0002041594	23,665
567	CROSBY MUD (DA 1)	2022	31,771,792	0.86	273,237	0	273,237	0.0000198049	2,296
568	VILLAGE AT KATY DEVELOPEMENT DISTRICT	2022	4,027,792	1.00	40,278	0	40,278	0.0000029195	338
600	HARRIS COUNTY WCID-FONDREN ROAD	2022	205,474,631	0.38	780,804	0	780,804	0.0000565947	6,560
601	HARRIS COUNTY WCID 1	2022	420,483,578	0.37	1,542,922	0	1,542,922	0.0001118351	12,963
602	HARRIS COUNTY WCID 21	2022	633,780,746	0.28	1,774,586	0	1,774,586	0.0001286267	14,910
603	HARRIS COUNTY WCID 36	2022	519,916,995	0.27	1,386,619	0	1,386,619	0.0001005058	11,650
604	HARRIS COUNTY WCID 50	2022	379,573,191	0.43	1,649,246	0	1,649,246	0.0001195417	13,856
605	HARRIS COUNTY WCID 70	2022	149,473,495	0.58	866,946	0	866,946	0.0000628385	7,284
606	HARRIS COUNTY WCID 74	2022	208,162,883	0.78	1,627,209	0	1,627,209	0.0001179444	13,671
609	HARRIS COUNTY WCID 84	2022	596,464,503	0.46	2,713,913	0	2,713,913	0.0001967116	22,801
610	HARRIS COUNTY WCID 89	2022	754,889,801	0.79	5,963,629	0	5,963,629	0.0004322596	50,105
611	HARRIS COUNTY WCID 91	2022	186,778,818	0.25	469,936	0	469,936	0.0000340622	3,948
612	HARRIS COUNTY WCID 92	2022	324,521,003	0.13	433,239	0	433,239	0.0000314023	3,640
613	HARRIS COUNTY WCID 96	2022	1,096,766,444	0.73	8,033,814	0	8,033,814	0.0005823121	67,498
614	HARRIS COUNTY WCID 155	2022	1,882,175,078	0.11	2,070,393	0	2,070,393	0.0001500676	17,395
615	HARRIS COUNTY WCID 099	2022	161,878,697	0.16	259,006	0	259,006	0.0000187734	2,176
616	HARRIS COUNTY WCID 156	2022	200,922,733	0.25	496,279	0	496,279	0.0000359716	4,170
617	HARRIS COUNTY WCID 157	2022	1,955,967,154	0.38	7,334,877	0	7,334,877	0.0005316513	61,625
618	HARRIS COUNTY ID 25	2022	115,652,896	0.90	1,040,876	0	1,040,876	0.0000754454	8,745
622	HARRIS COUNTY WCID 109	2022	784,430,898	0.23	1,800,269	0	1,800,269	0.0001304883	15,125
623	HARRIS COUNTY WCID 110	2022	1,067,279,230	0.33	3,522,021	0	3,522,021	0.0002552854	29,591

ESTIMATED 2024 COST ALLOCATION TO TAXING UNITS

Jur No.	Taxing Unit	Tax Year	Taxable Value as of 04/14/2023	Tax Rate	Total Levy	Frozen Levy Loss	Adjusted Levy	Allocation Ratio	2024 Budget Allocation
624	HARRIS COUNTY WCID 113	2022	113,829,759	0.65	739,893	0	739,893	0.0000536294	6,216
625	HARRIS COUNTY WCID 114	2022	585,256,537	0.23	1,341,993	0	1,341,993	0.0000972712	11,275
626	HARRIS COUNTY WCID 116	2022	367,249,194	0.26	954,848	0	954,848	0.0000692099	8,022
627	HARRIS COUNTY WCID 119	2022	804,877,575	0.39	3,139,023	0	3,139,023	0.0002275247	26,373
628	HARRIS COUNTY WCID 132	2022	211,210,808	0.30	633,632	0	633,632	0.0000459273	5,324
629	HARRIS COUNTY WCID 133	2022	334,233,396	0.63	2,092,301	0	2,092,301	0.0001516555	17,579
630	HARRIS COUNTY WCID 136	2022	169,342,520	0.75	1,270,069	0	1,270,069	0.0000920580	10,671
631	HARRIS COUNTY ESD 46	2022	8,000,823,421	0.10	8,000,823	0	8,000,823	0.0005799208	67,221
632	HARRIS COUNTY WCID 145	2022	1,652,536,597	0.05	863,946	0	863,946	0.0000626211	7,259
633	HARRIS COUNTY ESD 9	2022	54,331,057,550	0.05	27,156,836	0	27,156,836	0.0019683993	228,164
634	HARRIS COUNTY ESD 13	2022	10,128,540,679	0.09	9,303,267	0	9,303,267	0.0006743254	78,163
635	HARRIS COUNTY ESD 16	2022	17,441,895,728	0.05	8,216,354	0	8,216,354	0.0005955431	69,031
636	HARRIS COUNTY ESD 20	2022	6,568,214,710	0.10	6,568,215	0	6,568,215	0.0004760816	55,184
637	HARRIS COUNTY ESD 28	2022	4,458,461,620	0.10	4,282,932	0	4,282,932	0.0003104382	35,984
638	HARRIS COUNTY ESD 47	2022	5,004,354,603	0.08	4,003,484	0	4,003,484	0.0002901831	33,636
639	HARRIS COUNTY ESD 24	2022	6,866,074,372	0.09	6,437,288	0	6,437,288	0.0004665916	54,084
640	HARRIS COUNTY ESD 14	2022	1,019,939,269	0.05	509,970	0	509,970	0.0000369640	4,285
641	HARRIS COUNTY ESD 10	2022	6,491,976,576	0.10	6,382,392	0	6,382,392	0.0004626126	53,623
642	HARRIS COUNTY ESD 25	2022	2,350,256,119	0.10	2,350,256	0	2,350,256	0.0001703528	19,746
643	HARRIS COUNTY ESD 48	2022	16,890,920,092	0.09	14,680,068	0	14,680,068	0.0010640501	123,338
645	HARRIS COUNTY ESD 29	2022	3,788,184,517	0.10	3,788,185	0	3,788,185	0.0002745777	31,827
647	HARRIS COUNTY ESD 17	2022	6,923,719,836	0.09	6,310,763	0	6,310,763	0.0004574208	53,021
648	HARRIS COUNTY ESD 21	2022	3,727,551,433	0.10	3,727,551	0	3,727,551	0.0002701827	31,318
649	HARRIS COUNTY ESD 19	2022	616,641,879	0.02	148,179	0	148,179	0.0000107404	1,245
650	HARRIS-FT BEND CO MUD 1	2022	64,404,235	0.59	382,168	0	382,168	0.0000277005	3,211
651	HEATHERLOCH MUD	2022	348,904,199	0.39	1,343,281	0	1,343,281	0.0000973646	11,286
652	HORSEPEN BAYOU MUD	2022	632,894,907	0.35	2,215,132	0	2,215,132	0.0001605586	18,611
654	HUNTERS GLEN MUD	2022	637,917,008	0.66	4,210,252	0	4,210,252	0.0003051702	35,373
656	INTERSTATE MUD	2022	799,244,284	0.34	2,737,412	0	2,737,412	0.0001984149	22,999
657	INVERNESS FOREST ID	2022	242,784,659	0.43	1,043,974	0	1,043,974	0.0000756700	8,771
658	JACKRABBIT ROAD PUD	2022	468,675,788	0.27	1,249,021	0	1,249,021	0.0000905323	10,494
660	HARRIS-FT BEND CO MUD 3	2022	761,029,704	0.62	4,718,384	0	4,718,384	0.0003420009	39,642
662	FORT BEND COUNTY MUD 30	2022	606,145	0.55	3,334	0	3,334	0.0000002417	28
664	HARRIS COUNTY ESD 75	2022	1,196,362,886	0.10	1,196,363	0	1,196,363	0.0000867156	10,051
665	HARRIS COUNTY ESD 15	2022	2,011,268,080	0.05	981,700	0	981,700	0.0000711562	8,248
666	HARRIS COUNTY ESD 11	2022	66,337,192,480	0.03	19,460,679	0	19,460,679	0.0014105615	163,503
667	HARRIS COUNTY ESD 50	2022	8,341,321,824	0.05	4,170,661	0	4,170,661	0.0003023005	35,041
668	HARRIS COUNTY ESD 12	2022	3,683,968,329	0.05	1,841,984	0	1,841,984	0.0001335119	15,476
669	HARRIS COUNTY ESD 80	2022	2,611,424,228	0.05	1,247,242	0	1,247,242	0.0000904034	10,479
670	HARRIS COUNTY ESD 60	2022	5,729,152,291	0.05	2,864,576	0	2,864,576	0.0002076320	24,067

ESTIMATED 2024 COST ALLOCATION TO TAXING UNITS

Jur No.	Taxing Unit	Tax Year	Taxable Value as of 04/14/2023	Tax Rate	Total Levy	Frozen Levy Loss	Adjusted Levy	Allocation Ratio	2024 Budget Allocation
671	HARRIS COUNTY ESD 1	2022	24,115,237,426	0.09	21,993,097	0	21,993,097	0.0015941178	184,779
672	HARRIS COUNTY ESD 2	2022	5,462,563,536	0.03	1,638,769	0	1,638,769	0.0001187823	13,768
673	HARRIS COUNTY ESD 3	2022	3,757,150,971	0.10	3,752,755	0	3,752,755	0.0002720096	31,530
674	HARRIS COUNTY ESD 4	2022	1,460,581,336	0.10	1,460,581	0	1,460,581	0.0001058668	12,271
675	HARRIS COUNTY ESD 5	2022	2,459,675,892	0.02	434,379	0	434,379	0.0000314849	3,650
676	HARRIS COUNTY ESD 6	2022	3,779,379,208	0.03	1,133,814	0	1,133,814	0.0000821818	9,526
677	HARRIS-FT BEND ESD 100	2022	3,579,638,926	0.08	2,902,443	0	2,902,443	0.0002103767	24,385
678	WALLER HARRIS ESD 200	2022	3,972,645,774	0.10	3,870,390	0	3,870,390	0.0002805361	32,518
679	HARRIS COUNTY ESD 8	2022	5,286,348,063	0.09	4,945,960	0	4,945,960	0.0003584963	41,554
681	KINGSBRIDGE MUD	2022	24,916,190	0.44	109,631	0	109,631	0.0000079463	921
682	KIRK MONT MUD	2022	144,820,954	0.49	713,967	0	713,967	0.0000517502	5,999
683	KLEIN PUD	2022	338,571,348	0.42	1,405,071	0	1,405,071	0.0001018433	11,805
684	KLEINWOOD MUD	2022	438,376,673	0.39	1,696,518	0	1,696,518	0.0001229681	14,254
687	HARRIS COUNTY MUD 572	2022	12,059,168	1.15	138,680	0	138,680	0.0000100519	1,165
691	LAKE MUD	2022	465,780,547	0.42	1,956,278	0	1,956,278	0.0001417962	16,436
692	LAKE FOREST UD	2022	445,305,999	0.22	970,144	0	970,144	0.0000703186	8,151
693	LANGHAM CREEK UD	2022	692,895,668	0.60	4,155,295	0	4,155,295	0.0003011868	34,912
694	LONGHORN TOWN UD	2022	281,012,712	0.26	730,633	0	730,633	0.0000529582	6,139
695	LOUETTA NORTH PUD	2022	477,132,892	0.24	1,145,119	0	1,145,119	0.0000830013	9,621
696	LOUETTA ROAD UD	2022	161,175,397	0.24	386,821	0	386,821	0.0000280378	3,250
697	LUCE BAYOU PUD	2022	67,697,609	0.97	653,282	0	653,282	0.0000473516	5,489
699	HARRIS COUNTY MUD 540	2022	23,462,005	1.50	351,930	0	351,930	0.0000255088	2,957
701	MALCOMSON ROAD UD	2022	957,002,931	0.37	3,540,911	0	3,540,911	0.0002566546	29,750
702	MASON CREEK UD	2022	802,009,072	0.31	2,502,268	0	2,502,268	0.0001813710	21,023
703	BRAZORIA COUNTY MUD 28	2022	129,140,640	0.76	981,469	0	981,469	0.0000711395	8,246
704	MAYDE CREEK MUD	2022	379,040,208	0.72	2,729,089	0	2,729,089	0.0001978116	22,929
705	MEMORIAL HILLS UD	2022	132,468,778	0.75	990,204	0	990,204	0.0000717726	8,319
706	MEMORIAL MUD	2022	597,960,692	0.35	2,110,801	0	2,110,801	0.0001529964	17,734
707	MEMORIAL VILLAGES WATER AUTHORITY	2022	6,203,846,895	0.03	1,579,996	0	1,579,996	0.0001145223	13,275
709	MILLS ROAD MUD	2022	469,037,491	0.53	2,485,899	0	2,485,899	0.0001801845	20,886
710	MISSION BEND MUD 1	2022	241,278,421	0.22	530,813	0	530,813	0.0000384747	4,460
711	MISSION BEND MUD 2	2022	583,699,998	0.56	3,247,123	0	3,247,123	0.0002353601	27,281
712	MORTON ROAD MUD	2022	236,688,528	0.52	1,228,413	0	1,228,413	0.0000890386	10,321
714	MOUNT HOUSTON ROAD MUD	2022	392,656,385	1.27	4,986,736	0	4,986,736	0.0003614518	41,897
716	HARRIS COUNTY MUD 490	2022	82,316,600	1.00	823,166	0	823,166	0.0000596652	6,916
717	HARRIS COUNTY WCID 158	2022	129,153,304	0.50	645,767	0	645,767	0.0000468069	5,426
718	NEWPORT MUD	2022	939,189,621	0.60	5,656,739	0	5,656,739	0.0004100154	47,526
720	EAST ALDINE MGMT DIST (DA 1)	2022	1,328,083	1.25	16,601	0	16,601	0.0000012033	139
721	NORTHAMPTON MUD	2022	987,952,101	0.50	4,939,761	0	4,939,761	0.0003580469	41,502
722	NORTH BELT UD	2022	517,406,506	0.40	2,069,626	0	2,069,626	0.0001500120	17,388

ESTIMATED 2024 COST ALLOCATION TO TAXING UNITS

Jur No.	Taxing Unit	Tax Year	Taxable Value as of 04/14/2023	Tax Rate	Total Levy	Frozen Levy Loss	Adjusted Levy	Allocation Ratio	2024 Budget Allocation
724	NORTHEAST HARRIS CNTY MUD 1	2022	269,274,744	1.23	3,312,079	0	3,312,079	0.0002400682	27,827
725	NORTH FOREST MUD	2022	116,333,137	0.26	302,466	0	302,466	0.0000219235	2,541
727	NORTH MISSION GLEN MUD	2022	4,641,564	0.42	19,495	0	19,495	0.0000014130	164
728	NORTH PARK PUD	2022	312,134,834	0.25	764,730	0	764,730	0.0000554297	6,425
730	NORTHWEST FREEWAY MUD	2022	191,215,354	0.64	1,223,778	0	1,223,778	0.0000887027	10,282
731	NORTHGATE CROSSING MUD 1	2022	283,114,251	0.88	2,480,081	0	2,480,081	0.0001797628	20,837
732	NORTHGATE CROSSING MUD 2	2022	365,473,945	0.78	2,850,697	0	2,850,697	0.0002066261	23,951
734	NORTHGATE CROSSING ROAD UD	2022	593,909,522	0.09	546,397	0	546,397	0.0000396043	4,591
735	HARRIS-WALLER CO MUD 4	2022	310	1.50	5	0	5	0.0000000004	0
738	HARRIS-WALLER CO MUD 5	2022	3,638,764	1.50	54,581	0	54,581	0.0000039562	459
739	HARRIS COUNTY MUD 534	2022	47,581,763	1.50	713,726	0	713,726	0.0000517327	5,997
740	HARRIS COUNTY MUD 559	2022	20,949,779	1.35	282,822	0	282,822	0.0000204997	2,376
745	NORTHWEST HC MUD 5	2022	2,861,110,391	0.71	20,313,884	0	20,313,884	0.0014724040	170,671
746	NORTHWEST HC MUD 6	2022	405,317,818	0.36	1,474,708	0	1,474,708	0.0001068907	12,390
749	NORTHWEST HC MUD 9	2022	514,625,242	0.35	1,801,188	0	1,801,188	0.0001305549	15,133
750	NORTHWEST HC MUD 10	2022	802,766,247	0.64	5,137,704	0	5,137,704	0.0003723944	43,165
752	NORTHWEST HC MUD 12	2022	591,107,807	0.65	3,842,201	0	3,842,201	0.0002784929	32,281
755	NORTHWEST HC MUD 15	2022	546,888,764	0.55	2,980,544	0	2,980,544	0.0002160377	25,042
756	NORTHWEST HC MUD 16	2022	288,695,948	0.92	2,656,003	0	2,656,003	0.0001925141	22,315
759	NORTHWEST HC MUD 19	2022	813,759,861	0.62	5,045,311	0	5,045,311	0.0003656975	42,389
760	NORTHWEST HC MUD 20	2022	283,592,439	0.21	599,514	0	599,514	0.0000434544	5,037
761	NORTHWEST HC MUD 21	2022	155,227,590	0.21	332,342	0	332,342	0.0000240890	2,792
762	NORTHWEST HC MUD 22	2022	249,065,472	0.60	1,494,393	0	1,494,393	0.0001083176	12,555
763	NORTHWEST HC MUD 23	2022	230,545,684	0.73	1,682,983	0	1,682,983	0.0001219871	14,140
764	NORTHWEST HC MUD 24	2022	594,941,186	0.43	2,558,247	0	2,558,247	0.0001854285	21,494
768	NORTHWEST HC MUD 28	2022	148,849,515	0.64	945,194	0	945,194	0.0000685102	7,941
769	NORTHWEST HC MUD 29	2022	433,469,911	0.14	606,858	0	606,858	0.0000439867	5,099
770	NORTHWEST HC MUD 30	2022	480,549,644	0.55	2,643,023	0	2,643,023	0.0001915733	22,206
771	NORTHWEST HC MUD 32	2022	556,072,149	0.58	3,225,218	0	3,225,218	0.0002337723	27,097
776	NORTHWEST HC MUD 36	2022	308,351,524	0.58	1,788,439	0	1,788,439	0.0001296308	15,026
777	NW PARK CONSOLIDATED MUD	2022	1,101,134,716	0.38	4,162,289	0	4,162,289	0.0003016937	34,970
778	NOTTINGHAM COUNTRY MUD	2022	1,118,669,071	0.28	3,076,340	0	3,076,340	0.0002229813	25,847
779	NORTHWOOD MUD 1	2022	79,427,511	0.90	714,848	0	714,848	0.0000518141	6,006
781	OAKMONT PUBLIC UTILITY DISTRICT	2022	542,594,465	0.72	3,906,680	0	3,906,680	0.0002831665	32,823
783	PARKWAY UD	2022	513,454,333	0.69	3,542,835	0	3,542,835	0.0002567940	29,766
784	PINE BOUGH PUD	2022	1,636,880	1.00	16,369	0	16,369	0.0000011865	138
785	PINE FOREST MUD	2022	81,678,705	0.93	759,612	0	759,612	0.0000550587	6,382
786	RANKIN ROAD WEST MUD	2022	148,998,941	0.89	1,318,641	0	1,318,641	0.0000955786	11,079
787	PINE VILLAGE PUD	2022	74,110,489	0.85	629,939	0	629,939	0.0000456596	5,293
788	PONDEROSA FOREST UD	2022	478,565,707	0.99	4,722,486	0	4,722,486	0.0003422983	39,677

ESTIMATED 2024 COST ALLOCATION TO TAXING UNITS

Jur No.	Taxing Unit	Tax Year	Taxable Value as of 04/14/2023	Tax Rate	Total Levy	Frozen Levy Loss	Adjusted Levy	Allocation Ratio	2024 Budget Allocation
789	POSTWOOD MUD	2022	203,605,293	0.44	893,827	0	893,827	0.0000647869	7,510
790	PRESTONWOOD FOREST MUD	2022	319,212,567	0.31	973,598	0	973,598	0.0000705690	8,180
801	REID ROAD MUD 1	2022	389,492,387	0.44	1,702,861	0	1,702,861	0.0001234279	14,307
802	REID ROAD MUD 2	2022	723,897,146	0.30	2,188,341	0	2,188,341	0.0001586167	18,386
803	RENN ROAD MUD	2022	233,627,754	0.63	1,460,173	0	1,460,173	0.0001058372	12,268
804	RICEWOOD MUD	2022	489,942,950	0.34	1,665,806	0	1,665,806	0.0001207420	13,996
806	ROLLING CREEK UD	2022	468,919,721	0.61	2,860,410	0	2,860,410	0.0002073301	24,032
807	ROLLING FORK PUD	2022	201,664,463	0.45	907,490	0	907,490	0.0000657773	7,624
809	ROYALWOOD MUD	2022	62,479,841	0.42	262,415	0	262,415	0.0000190205	2,205
810	RICHEY ROAD MUD	2022	411,969,115	0.20	823,938	0	823,938	0.0000597212	6,922
811	REMINGTON MUD 1	2022	1,434,092,881	0.43	6,166,599	0	6,166,599	0.0004469714	51,810
822	SAGEMEADOW UD	2022	406,608,196	0.50	2,033,041	0	2,033,041	0.0001473602	17,081
823	SEQUOIA UD	2022	101,570,905	0.37	375,812	0	375,812	0.0000272398	3,157
824	SHASLA PUD	2022	132,486,191	0.88	1,169,257	0	1,169,257	0.0000847508	9,824
825	SW HARRIS COUNTY MUD 1	2022	114,102,786	0.42	479,232	0	479,232	0.0000347360	4,026
826	SPANISH COVE PUD	2022	32,708,878	0.54	177,665	0	177,665	0.0000128776	1,493
827	SPENCER ROAD PUD	2022	462,011,792	0.40	1,824,947	0	1,824,947	0.0001322770	15,333
829	SPRING CREEK FOREST PUD	2022	255,448,120	0.43	1,093,318	0	1,093,318	0.0000792466	9,186
831	SPRING MEADOWS MUD	2022	350,776,441	0.73	2,560,668	0	2,560,668	0.0001856040	21,514
832	SPRING WEST MUD	2022	440,832,904	0.71	3,129,914	0	3,129,914	0.0002268644	26,297
833	SHELDON ROAD MUD	2022	102,956,782	1.50	1,544,352	0	1,544,352	0.0001119387	12,975
841	TATTOR ROAD MUD	2022	306,931,377	0.51	1,565,350	0	1,565,350	0.0001134607	13,152
842	TERRANOVA WEST MUD	2022	281,923,031	0.59	1,649,250	0	1,649,250	0.0001195420	13,857
844	HARRIS COUNTY MUD 368	2022	1,056,670,622	0.61	6,445,691	0	6,445,691	0.0004672007	54,155
846	TIMBERLAKE ID	2022	208,107,767	0.38	790,810	0	790,810	0.0000573200	6,644
847	TIMBER LANE UD	2022	1,396,125,151	0.84	11,727,451	0	11,727,451	0.0008500366	98,531
848	TRAIL OF THE LAKES MUD	2022	717,340,501	0.62	4,447,511	0	4,447,511	0.0003223674	37,367
850	HARRIS COUNTY ID 3	2022	3,675,047,814	0.14	4,961,315	0	4,961,315	0.0003596092	41,683
851	WESTADOR MUD	2022	360,108,959	0.16	561,770	0	561,770	0.0000407186	4,720
861	WEST HARRIS COUNTY MUD 1	2022	403,873,106	0.22	880,443	0	880,443	0.0000638168	7,397
862	WEST HARRIS COUNTY MUD 2	2022	628,350,159	0.36	2,262,061	0	2,262,061	0.0001639602	19,005
864	WEST HARRIS COUNTY MUD 4	2022	104,433,444	0.91	945,123	0	945,123	0.0000685050	7,941
865	WEST HARRIS COUNTY MUD 5	2022	295,452,991	0.84	2,481,805	0	2,481,805	0.0001798878	20,851
866	WEST HARRIS COUNTY MUD 6	2022	222,265,929	0.22	488,985	0	488,985	0.0000354429	4,108
867	WEST HARRIS COUNTY MUD 7	2022	418,778,352	0.48	2,010,136	0	2,010,136	0.0001457000	16,889
869	WEST HARRIS COUNTY MUD 9	2022	382,264,191	0.42	1,601,687	0	1,601,687	0.0001160945	13,457
870	WEST HARRIS COUNTY MUD 10	2022	532,576,000	0.50	2,662,880	0	2,662,880	0.0001930126	22,373
871	WEST HARRIS COUNTY MUD 11	2022	1,037,064,140	0.40	4,148,257	0	4,148,257	0.0003006766	34,852
874	WEST HARRIS COUNTY MUD 14	2022	273,142,885	0.46	1,256,457	0	1,256,457	0.0000910713	10,556
875	WEST HARRIS COUNTY MUD 15	2022	705,028,280	0.20	1,374,805	0	1,374,805	0.0000996495	11,551

ESTIMATED 2024 COST ALLOCATION TO TAXING UNITS

Jur No.	Taxing Unit	Tax Year	Taxable Value as of 04/14/2023	Tax Rate	Total Levy	Frozen Levy Loss	Adjusted Levy	Allocation Ratio	2024 Budget Allocation
876	WEST HARRIS COUNTY MUD 16	2022	49,694,113	1.40	695,718	0	695,718	0.0000504275	5,845
877	WEST HARRIS COUNTY MUD 17	2022	170,348,373	0.86	1,464,996	0	1,464,996	0.0001061868	12,308
879	WEST HARRIS COUNTY MUD 21	2022	1,024,181,336	0.40	4,096,725	0	4,096,725	0.0002969415	34,419
893	WEST KEEGANS BAYOU ID	2022	254,512,942	0.08	211,246	0	211,246	0.0000153117	1,775
894	WESTLAKE MUD 1	2022	287,538,879	0.44	1,255,193	0	1,255,193	0.0000909797	10,546
895	WEST MEMORIAL MUD	2022	356,505,889	0.36	1,283,421	0	1,283,421	0.0000930257	10,783
896	WESTON MUD	2022	992,178,509	0.30	2,976,536	0	2,976,536	0.0002157472	25,008
897	WEST PARK MUD	2022	719,988,977	0.38	2,699,959	0	2,699,959	0.0001957002	22,684
899	WHITE OAK BEND MUD	2022	113,276,416	0.70	794,068	0	794,068	0.0000575561	6,672
901	WINDFERN FOREST UD	2022	459,929,245	0.42	1,940,901	0	1,940,901	0.0001406816	16,307
902	WOODCREEK MUD	2022	267,998,913	0.45	1,205,995	0	1,205,995	0.0000874137	10,132
907	NORTHPOINTE WCID	2022	1,589,173,261	0.25	3,972,933	0	3,972,933	0.0002879687	33,379
910	KATY MANAGEMENT DISTRICT 1	2022	143,879,998	0.80	1,151,040	0	1,151,040	0.0000834304	9,671
911	CINCO MUD 3	2022	34,958,527	0.34	118,859	0	118,859	0.0000086152	999
913	CINCO MUD 6	2022	138,827,315	0.30	417,454	0	417,454	0.0000302582	3,507
914	CINCO MUD 9	2022	197,947,535	0.24	481,013	0	481,013	0.0000348651	4,041
915	HARRIS-FT BEND CO MUD 5	2022	13,777,115	0.39	53,731	0	53,731	0.0000038946	451
916	FORT BEND WCID 2	2022	166,832,464	0.21	354,519	0	354,519	0.0000256965	2,979
917	WILLOW FORK DRAINAGE DISTRICT	2022	366,000,636	0.17	629,521	0	629,521	0.0000456293	5,289
921	FALL CREEK MGMT DISTRICT	2022	272,651,021	0.21	572,567	0	572,567	0.0000415012	4,811
A02	HARRIS COUNTY MUD 578	2022	773,382	1.45	11,214	0	11,214	0.0000008128	94
A03	HARRIS COUNTY MUD 547	2022	635,941	1.50	9,539	0	9,539	0.0000006914	80
A04	WESTWOOD MGMT DISTRICT	2022	6,023	0.99	60	0	60	0.0000000043	0
A06	HARRIS COUNTY MUD 576	2022	19,605	1.10	216	0	216	0.0000000157	2
A07	HARRIS COUNTY WCID 164	2022	15,588	0.40	62	0	62	0.0000000045	1
A09	HARRIS COUNTY MUD 539	2022	524	1.50	8	0	8	0.0000000006	0
A10	HARRIS COUNTY MUD 532	2022	4,293,276	1.50	64,399	0	64,399	0.0000046678	541
A11	HARRIS COUNTY MUD 554	2022	2,683,407	0.99	26,566	0	26,566	0.0000019256	223
A14	ENCLAVE AT THE WOODLANDS DEFINED AREA	2022	3,200,025	0.99	31,680	0	31,680	0.0000022963	266
A15	HARRIS COUNTY 569	2022	4,596,478	1.50	68,947	0	68,947	0.0000049975	579

585			4,897,067,432,852		13,964,076,170	167,669,795	13,796,406,375	1.000000000%	\$115,913,324
-----	--	--	-------------------	--	----------------	-------------	----------------	--------------	---------------