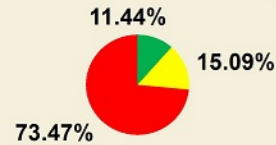
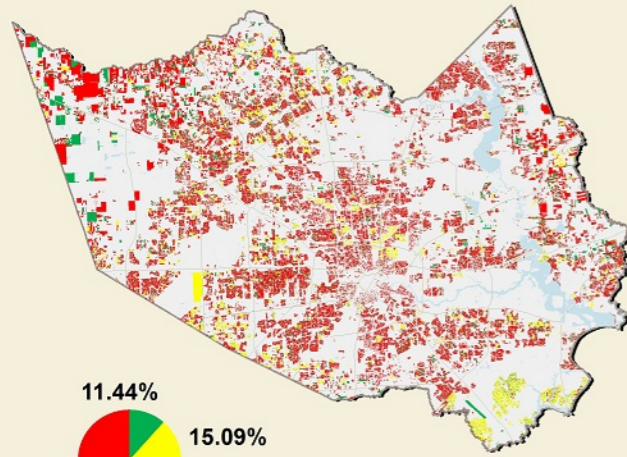
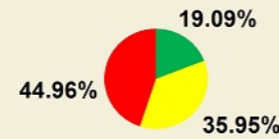
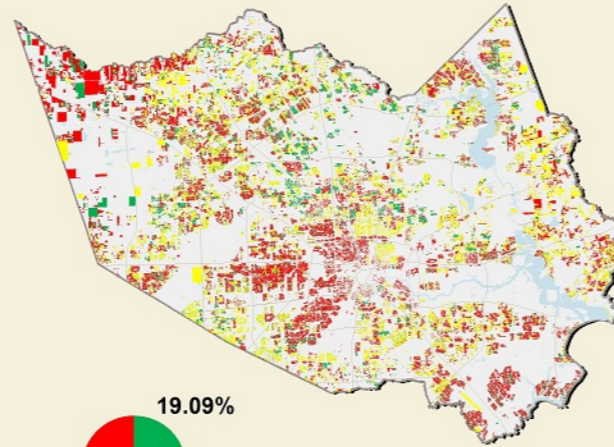


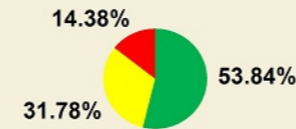
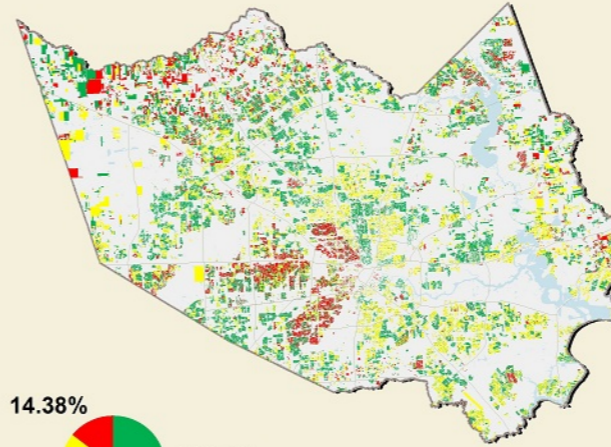
2007



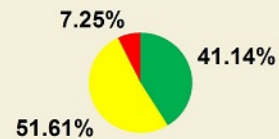
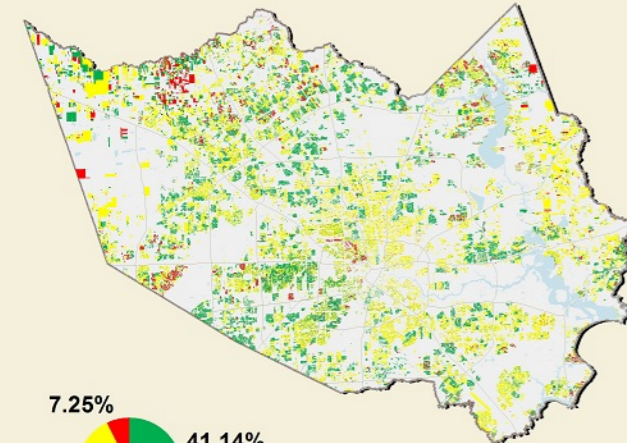
2008



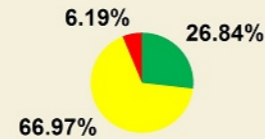
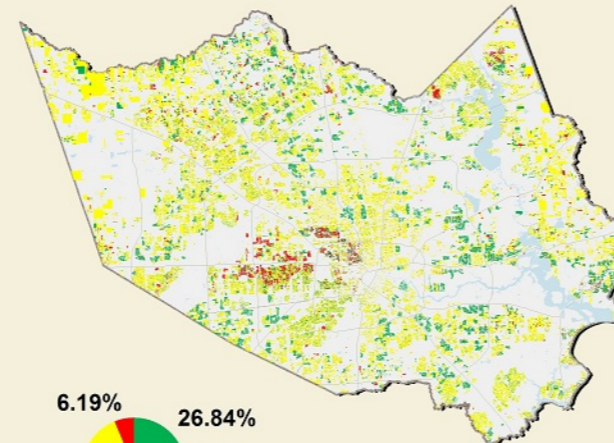
2009



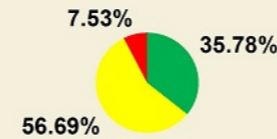
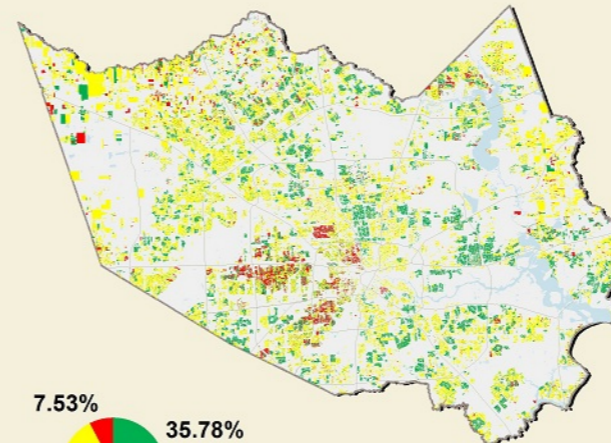
2010



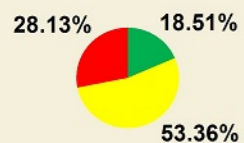
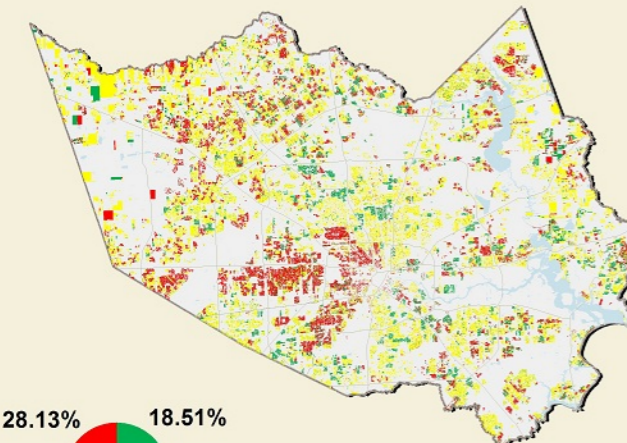
2011



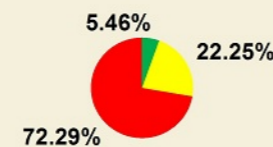
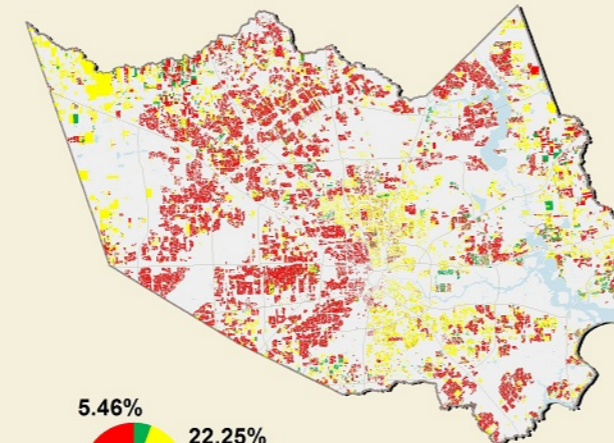
2012



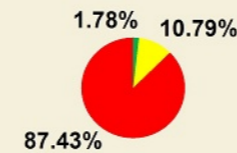
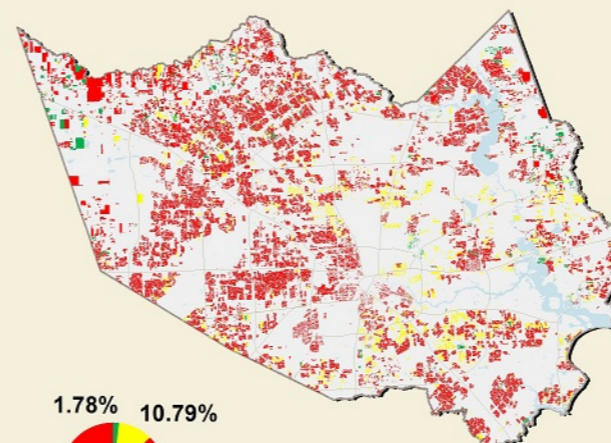
2013



2014



2015



BOOM, RECESSION, AND RECOVERY 2007 - 2015

Residential Properties in
Harris County

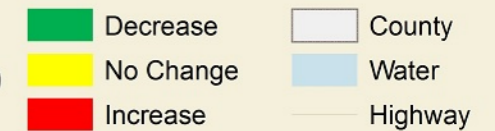


GIS User: tnguyen
Appraisal Analyst: dmabe
Harris County Appraisal Dist.
13013 Northwest Fwy
Houston, TX 77040-6305



Scale: Not To Scale / Plot Date: 4/7/2015
Residential Market Values (A1 & A2)
Data as of April 7, 2015
2015 noticed values (subject to change)

Legend



Geospatial or map data maintained by the Harris County Appraisal District is for informational purposes and may **not** have been prepared for or be suitable for legal, engineering, or surveying purposes. It does **not** represent an on-the-ground survey and only represents the approximate location of property boundaries.