



***HARRIS COUNTY
APPRAISAL DISTRICT
HARRIS COUNTY
HOUSTON, TEXAS***

2012 BUDGET

Adopted August 17, 2011

RESOLUTION NO. 2011-7

**A RESOLUTION OF THE BOARD OF DIRECTORS OF THE HARRIS
COUNTY APPRAISAL DISTRICT APPROVING AND ADOPTING
THE 2012 BUDGET OF SAID DISTRICT**

* * * *

WHEREAS, pursuant to the provisions of the Texas Property Tax code, a proposed budget for the Harris County Appraisal District for the year 2012 has heretofore been prepared by the chief appraiser of the district and timely submitted by him to the Board of Directors of such district and to the governing bodies of each taxing unit within such district; and

WHEREAS, following timely notice in writing furnished to the presiding officer of the governing body of each such taxing unit and published in a newspaper of general circulation in Harris County, Texas, in accordance with Section 6.062 of the Texas Property Tax Code, the Board of Directors of said district did on the 17th day of August, 2011, conduct a public hearing on such proposed budget; and

WHEREAS, at such public hearing any and all persons desiring to be heard on any matter relating to said proposed budget were heard and their comments and suggestions were duly noted and considered by the Board of Directors of said district; and

WHEREAS, the Board of Directors of the district now deems it necessary and appropriate to formally approve and adopt at this time the 2012 budget of the Harris County Appraisal District; now, therefore

**BE IT RESOLVED BY THE BOARD OF DIRECTORS OF THE HARRIS COUNTY
APPRAISAL DISTRICT:**

Section 1. That the facts and recitations set forth in the preamble of this Resolution be, and they are hereby, found to be true and correct and that they be, and they are hereby, adopted, ratified, and confirmed.

Section 2. That the proposed budget for the Harris County Appraisal District for the year 2012, as heretofore submitted to and considered by the Board of Directors of such district and as heretofore modified or changed by such Board of Directors of such district

during its deliberations on such budget following the public hearing thereon, in the total amount of \$63,129,426 (of which total sum it is anticipated that \$2,070,000 will be contributed from such district's general fund balance, that \$0 will be contributed from such district's internal service fund balance, that \$30,000 will be interest earned, that \$600,000 will be from other income, and that the remaining \$60,429,426 will be paid to the district by the various taxing units participating in the district according to their respective proportionate shares calculated pursuant to the formula established by Section 6.06(d) of the Texas Property Tax Code be, and it is hereby, approved and adopted as the official budget of said district for the year 2012.

Section 3. That the chief appraiser of the Harris County Appraisal District be, and he is hereby, authorized to make the interfund transfers between the general fund and the internal service fund as necessary for expenditures related to the group benefits fund.

Section 4. That the chief appraiser of the Harris County Appraisal District shall commit \$1,000,000 of the district's uncommitted general fund balance funds to a capital improvement fund for the purpose of acquisition, construction or repair of capital facilities.

Section 5. That, for the purpose of authenticating the official 2012 budget of the Harris County Appraisal District adopted hereby, a copy of which is attached hereto and made a part hereof for all purposes, the chairman and secretary of the Board of Directors of said district be, and they are hereby, authorized and directed to affix their signatures on the cover of the original of such budget under the following certification which they shall cause to be placed thereon:

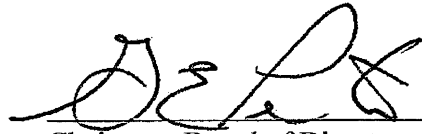
"This is to certify that this is the official 2012 budget of the Harris County Appraisal District approved and adopted by the Board of Directors of said district on August 17, 2011."

Section 6. That the chief appraiser of the Harris County Appraisal District be, and he is hereby, authorized to transfer unencumbered balances from one budget account to another budget account during the 2012 fiscal year in amounts of \$25,000 or less. Amounts exceeding \$25,000 may be transferred under the following circumstances and conditions: A written request to effect such transfers exceeding \$25,000 shall be submitted by the chief appraiser to the Board of Directors. Such request shall identify the budget account from which it is proposed the transfer will be made, the budget account to which it is proposed the

transfer will be made, and the need or justification for such transfer. Approval of such request by formal action of the Board of Directors must be obtained before the chief appraiser shall be authorized to make such transfer.

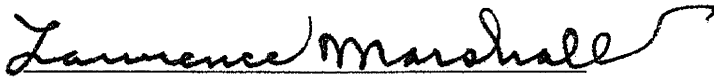
Section 7. That the chief appraiser of the district be, and he is hereby, authorized and directed to place or cause to be placed the official, authenticated original of said 2012 budget among the public records of the district and to make the same available for inspection in the office of the district by any person requesting that right and privilege.

PASSED, APPROVED, AND ADOPTED this the 17th day of August, 2011.



Chairman, Board of Directors
Harris County Appraisal District

ATTEST:



Secretary, Board of Directors
Harris County Appraisal District

(SEAL)



HARRIS COUNTY APPRAISAL DISTRICT

2012 BUDGET

January 1, 2012 through December 31, 2012

REVENUES & EXPENDITURES FOR ALL DEPARTMENTS

**Jim Robinson, Chief Appraiser
Houston, Harris County, Texas
August 17, 2011**

Contents

- 3 **District Officials**
Six member governing body of the district
- 4 **Plan of Organization**
The departments and divisions of the district and the number of full time equivalent positions
- 6 **2012 Budget**
Expenditures for the general fund by line item account
- 8 **Expenditure Summary & Method of Financing**
Summarizes expenditures by account groups and an estimate of revenue used to finance the expenditures
- 9 **Line Item Expenditures by Department**
General fund expenditures by line item account for each of the district's six operating departments
- 11 **2012 Budget with Comparisons**
Comparison of the 2012 budget to the 2011 budget and 2010 actual expenditures by line item
- 14 **Schedule of Positions**
List of full time equivalent positions in alphabetical order; indicating the pay grade and number of positions for each position title
- 17 **Schedule of Appraisal Review Board Positions**
Number of appraisal review board members eligible for compensation
- 18 **Salary Schedule and Provisions**
Employee pay is determined by four salary schedules: Classified, Technical, Director, and Line Item positions; merit and quality service incentive salary increases; compensatory time; career development program
- 22 **General Provisions**
Provisions relating to mileage, expense allowances, commissioned security officers uniform cleaning, cell phone allowance, travel regulations, appraisal review board per diem, appraisal review board auxiliary members' compensation, and reappropriation of certain income

- 26 **Employee Benefits Schedule**
Provisions for employee benefits, including paid leave and vacation

- 29 **Capital Expenditures**
List of capital items scheduled for acquisition

- 30 **Cost Allocation to Taxing Units**
List of taxing units allocated a portion of this budget and the estimated amount to be paid

DISTRICT OFFICIALS

Harris County Appraisal District Board of Directors 2011

GLENN PETERS
Chairman

LAWRENCE MARSHALL
Secretary

ED HEATHCOTT
Member

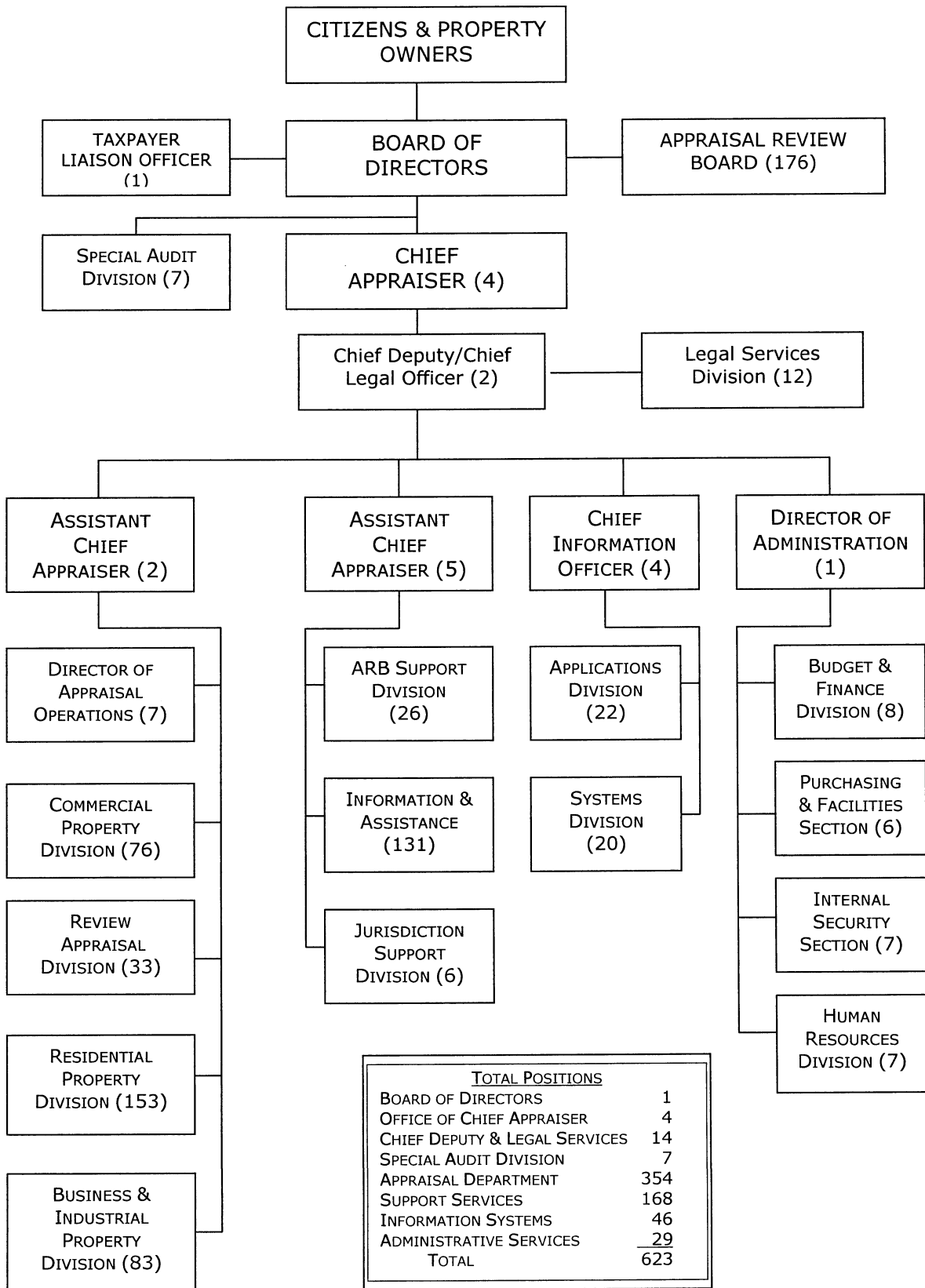
GARY W. STEIN
Member

DON SUMNERS
Member

TONI TRUMBULL
Member

JIM ROBINSON
Chief Appraiser

PLAN OF ORGANIZATION - 2012



FINANCIAL SECTION

2012 Budget – General Fund

Expenditure Summary and Method of Financing

General Fund – Line Item Expenditures by Department

2012 Budget with Comparisons

2012 BUDGET
GENERAL FUND

Account Number	Account Name Number of Positions	2012 Budget 623
<u>SALARIES, WAGES & RELATED</u>		
	Salaries & Wages	\$29,481,538
	Allowance for Career Devel & Merit	140,000
	Less Salary Lapse	(741,039)
	Reserve for Longevity	404,300
3010	Net Salaries & Wages	29,284,799
3011	ARB Board Members	2,450,000
3015	Contract & Seasonal Labor	0
3020	Shift Differential	32,000
3030	Overtime	205,898
3040	Part-time & Seasonal Wages	128,500
TOTAL SALARIES, WAGES & RELATED		32,101,197
<u>EMPLOYEE BENEFITS & RELATED</u>		
3501	Group Health Insurance	5,906,040
3503	Workers' Compensation Insurance	175,000
3504	Group Life & LTD Insurance	102,006
3505	Group Dental Insurance	216,804
3507	Unemployment Insurance	117,747
3520	Retirement	3,773,001
3526	FICA Medicare Only	428,078
3527	Social Security & Medicare	197,257
TOTAL EMPLOYEE BENEFITS & RELATED		10,915,933
<u>OFFICE & FIELD OPERATIONS</u>		
4001	Office Supplies	154,455
4003	Office Equipment & Maint.	353,000
4011	Telephone & Communication Service	241,700
4020	Copier Leases	90,000
4021	Copier Supplies & Maintenance	152,125
4030	Mapping Reproduction & Supplies	5,000
4040	Public Notice Advertising	24,269
4050	Security Services	168,725
4060	Field Travel & Other Expenses	1,038,794
4070	Appraisal Supplies	20,198
4080	Vehicle Gasoline & Maintenance	34,000
4090	Records Storage & Supplies	8,000
4092	Records Conversion Services	0
4097	Employee Recognition Activities	6,000
4100	Postage, Mailing, & Handling Svr.	2,147,000
4200	Professional Registration & Dues	70,000
4202	Seminars & Other Tuition	119,254
4212	Education Travel & Expenses	75,300
4213	Books, Manuals & Publications	199,776
4501	Printing, Forms, & Stationery	81,250
4530	Paper, Copier & Printer	125,230
TOTAL OFFICE & FIELD OPERATIONS		5,114,076

2012 BUDGET
GENERAL FUND

Account Number	Account Name	2012 Budget
<u>COMPUTER OPERATIONS</u>		
5010	Computer Leasing	0
5020	CPU & Related Maintenance	105,000
5030	Other Computer Maintenance	10,000
5040	Computer Supplies	34,850
5050	Software Lease & Maintenance	1,123,597
5060	Teleprocessing Lines & Installation	17,500
TOTAL COMPUTER OPERATIONS		1,290,947
<u>PROFESSIONAL SERVICES</u>		
5510	Financial Auditing	58,000
5520	Legal Services	5,830,000
5525	Arbitration Fees & Services	150,000
5526	State Office of Admin Hearings	250,000
5530	Appraisal Services	1,389,977
5550	Other Professional Services	564,770
5551	Mapping & Records Maintenance	1,104,722
TOTAL PROFESSIONAL SERVICES		9,347,469
<u>OFFICE SPACE, UTILITIES & RELATED</u>		
6100	Office Space	2,413,904
6150	Utilities	757,000
6200	Building & Fixture Maintenance	823,900
6400	Casualty & Liability Insurance	140,000
TOTAL OFFICE SPACE, UTILITIES & RELATED		4,134,804
<u>FIXED ASSETS PURCHASES</u>		
6501	Capital Purchases	225,000
TOTAL FIXED ASSETS PURCHASES		225,000
TOTAL BUDGET		\$63,129,426

EXPENDITURE SUMMARY AND METHOD OF FINANCING
2012 BUDGET

<u>BUDGETED EXPENDITURES</u>	2011 BUDGET	2012 BUDGET	Variance	%
<u>Account Groups</u>				
Number of Positions	630	623	(7)	-1.1%
Salaries, Wages & Related	\$33,096,092	\$32,101,197	(994,895)	-3.0%
Employee Benefits	10,369,218	10,915,933	546,715	5.3%
Office & Field Operations	5,410,823	5,114,076	(296,747)	-5.5%
Computer Operations	1,211,347	1,290,947	79,600	6.6%
Professional Services	9,160,492	9,347,469	186,977	2.0%
Office Space, Utilities & Maint.	4,287,939	4,134,804	(153,135)	-3.6%
Capital Expenditures	225,000	225,000	0	0.0%
TOTAL BUDGET	\$63,760,911	63,129,426	(631,485)	-1.0%
 <u>FINANCING METHOD</u>				
Jurisdiction Allocations	\$61,060,911	\$60,429,426	(631,485)	-1.0%
Interest Income	100,000	30,000	(70,000)	-70.0%
Other Income	600,000	600,000	0	0.0%
Application of Unreserved Funds			0	
General Fund	2,000,000	2,070,000	70,000	3.5%
Internal Service Fund	0	0	0	
TOTAL FINANCING METHOD	\$63,760,911	\$63,129,426	(631,485)	-1.0%

GENERAL FUND - LINE ITEM EXPENDITURES BY DEPARTMENT
2012 BUDGET

Account Number	Account Name	TOTAL BUDGET	BOARD OF DIRECTORS	OFC CHIEF APPRAISER	SUPPORT SERVICES	APPRAISAL DEPT	INFO SYSTEMS	ADMIN DEPT
	Number of Positions	623	1	6	168	354	46	48
<u>SALARIES, WAGES & RELATED</u>								
	Salaries & Wages	\$29,481,538	\$52,207	\$541,839	\$6,826,594	\$16,258,252	\$3,084,847	\$2,717,799
	Allowance for Career Devel & Merit	140,000	0	0	0	0	0	140,000
	Less Salary Lapse	(741,039)	0	(13,644)	(171,895)	(409,388)	(77,677)	(68,435)
	Reserve for Longevity	404,300	0	3,900	109,200	230,100	29,900	31,200
3010	Net Salaries & Wages	29,284,799	52,207	532,095	6,763,899	16,078,964	3,037,070	2,820,564
3011	ARB Board Members	2,450,000	2,450,000	0	0	0	0	0
3020	Shift Differential	32,000	0	0	0	0	16,000	16,000
3030	Overtime	205,898	0	0	95,000	99,248	6,000	5,650
3040	Part-time & Seasonal Wages	128,500	0	0	102,500	25,000	0	1,000
TOTAL SALARIES, WAGES & RELATED		32,101,197	2,502,207	532,095	6,961,399	16,203,212	3,059,070	2,843,214
<u>EMPLOYEE BENEFITS & RELATED</u>								
3501	Group Health Insurance	5,906,040	9,480	56,880	1,592,640	3,355,920	436,080	455,040
3503	Workers' Compensation Insurance	175,000	0	0	0	0	0	175,000
3504	Group Life & LTD Insurance	102,006	183	1,862	23,673	56,276	10,630	9,382
3505	Group Dental Insurance	216,804	348	2,088	58,464	123,192	16,008	16,704
3507	Unemployment Insurance	117,747	189	1,134	31,752	66,906	8,694	9,072
3520	Retirement	3,773,001	6,672	68,002	876,567	2,067,576	390,949	363,235
3526	FICA Medicare Only	428,078	757	7,715	99,454	234,584	44,356	41,212
3527	Social Security & Medicare	197,257	187,425	0	7,842	1,913	0	77
TOTAL EMPLOYEE BENEFITS & RELATED		10,915,933	205,054	137,681	2,690,392	5,906,367	906,717	1,069,722
<u>OFFICE & FIELD OPERATIONS</u>								
4001	Office Supplies	154,455	600	8,000	49,400	58,642	9,200	28,613
4003	Office Equipment & Maint.	353,000	0	0	0	0	343,000	10,000
4011	Telephone & Communication Service	241,700	0	0	0	0	241,700	0
4020	Copier Leases	90,000	0	0	0	0	0	90,000
4021	Copier Supplies & Maintenance	152,125	0	0	0	0	144,625	7,500
4030	Mapping Reproduction & Supplies	5,000	0	0	5,000	0	0	0
4040	Public Notice Advertising	24,269	0	0	0	0	0	24,269
4050	Security Services	168,725	0	0	0	0	0	168,725
4060	Field Travel & Other Expenses	1,038,794	2,750	18,875	17,385	947,894	7,040	44,850
4070	Appraisal Supplies	20,198	0	0	0	9,780	0	10,418
4080	Vehicle Gasoline & Maintenance	34,000	0	0	0	0	0	34,000
4090	Records Storage & Supplies	8,000	0	0	8,000	0	0	0
4092	Records Conversion Services	0	0	0	0	0	0	0
4097	Employee Recognition Activities	6,000	0	0	0	0	0	6,000
4100	Postage, Mailing, & Handling Svr.	2,147,000	0	0	0	0	0	2,147,000

GENERAL FUND - LINE ITEM EXPENDITURES BY DEPARTMENT
2012 BUDGET

Account Number	Account Name	TOTAL BUDGET	BOARD OF DIRECTORS	OFC CHIEF APPRAISER	SUPPORT SERVICES	APPRAISAL DEPT	INFO SYSTEMS	ADMIN DEPT
4200	Professional Registration & Dues	70,000	0	0	0	0	0	70,000
4202	Seminars & Other Tuition	119,254	11,850	3,500	12,800	26,600	20,300	44,204
4212	Education Travel & Expenses	75,300	3,500	6,000	10,300	23,300	10,500	21,700
4213	Books, Manuals & Publications	199,776	0	4,000	800	150,000	5,500	39,476
4501	Printing, Forms, & Stationery	81,250	0	0	0	0	80,750	500
4530	Paper, Copier & Printer	125,230	0	0	0	0	125,230	0
TOTAL OFFICE & FIELD OPERATIONS		5,114,076	18,700	40,375	103,685	1,216,216	987,845	2,747,255
<u>COMPUTER OPERATIONS</u>								
5010	Computer Leasing	0	0	0	0	0	0	0
5020	CPU & Related Maintenance	105,000	0	0	0	0	105,000	0
5030	Other Computer Maintenance	10,000	0	0	0	0	10,000	0
5040	Computer Supplies	34,850	0	0	0	0	34,850	0
5050	Software Lease & Maintenance	1,123,597	0	0	0	0	1,123,597	0
5060	Teleprocessing Lines & Installation	17,500	0	0	0	0	17,500	0
TOTAL COMPUTER OPERATIONS		1,290,947	0	0	0	0	1,290,947	0
<u>PROFESSIONAL SERVICES</u>								
5510	Financial Auditing	58,000	0	0	0	0	0	58,000
5520	Legal Services	5,830,000	5,830,000	0	0	0	0	0
5525	Arbitration Fees & Services	150,000	150,000	0	0	0	0	0
5526	State Office of Admin Hearings	250,000	250,000	0	0	0	0	0
5530	Appraisal Services	1,389,977	0	0	0	1,389,977	0	0
5550	Other Professional Services	564,770	0	0	452,770	12,000	100,000	0
5551	Mapping & Records Maintenance	1,104,722	0	0	0	0	1,104,722	0
TOTAL PROFESSIONAL SERVICES		9,347,469	6,230,000	0	452,770	1,401,977	1,204,722	58,000
<u>OFFICE SPACE, UTILITIES & RELATED</u>								
6100	Office Space	2,413,904	0	0	0	0	0	2,413,904
6150	Utilities	757,000	0	0	0	0	0	757,000
6200	Building & Fixture Maintenance	823,900	0	0	0	0	0	823,900
6400	Casualty & Liability Insurance	140,000	0	0	0	0	0	140,000
TOTAL OFFICE SPACE, UTILITIES & RELATED		4,134,804	0	0	0	0	0	4,134,804
<u>FIXED ASSETS PURCHASES</u>								
6501	Capital Purchases	225,000	0	0	0	0	225,000	0
TOTAL FIXED ASSETS PURCHASES		225,000	0	0	0	0	225,000	0
TOTAL BUDGET		\$63,129,426	\$8,955,961	\$710,151	\$10,208,246	\$24,727,772	\$7,674,301	\$10,852,995

2012 BUDGET WITH COMPARISONS
2011 BUDGET & 2010 ACTUAL

Account Number	Account Name	2010 ACTUAL	2011 BUDGET	2012 BUDGET
	Number of Positions	630	630	623
<u>SALARIES, WAGES & RELATED</u>				
	Salaries & Wages	\$28,919,887	\$29,607,365	\$29,481,538
	Allowance for Career Devel & Merit	0	540,000	140,000
	Less Salary Lapse	0	(403,521)	(741,039)
	Reserve for Longevity	0	346,500	404,300
3010	Net Salaries & Wages	28,919,887	30,090,344	29,284,799
3011	ARB Board Members	1,987,950	2,450,000	2,450,000
3015	Contract & Seasonal Labor	0	0	0
3020	Shift Differential	289,795	32,000	32,000
3030	Overtime	164,099	255,248	205,898
3040	Part-time & Seasonal Wages	150,929	268,500	128,500
TOTAL SALARIES, WAGES & RELATED		31,512,660	33,096,092	32,101,197
<u>EMPLOYEE BENEFITS & RELATED</u>				
3501	Group Health Insurance	5,637,814	5,292,000	5,906,040
3503	Workers' Compensation Insurance	124,216	175,000	175,000
3504	Group Life & LTD Insurance	90,600	118,200	102,006
3505	Group Dental Insurance	181,440	204,120	216,804
3507	Unemployment Insurance	148,790	119,070	117,747
3520	Retirement	5,063,686	3,812,387	3,773,001
3526	FICA Medicare Only	446,543	440,474	428,078
3527	Social Security & Medicare	132,059	207,967	197,257
TOTAL EMPLOYEE BENEFITS & RELATED		11,825,148	10,369,218	10,915,933
<u>OFFICE & FIELD OPERATIONS</u>				
4001	Office Supplies	110,870	152,412	154,455
4003	Office Equipment & Maint.	441,668	343,000	353,000
4011	Telephone & Communication Service	193,515	244,820	241,700
4020	Copier Leases	92,580	94,457	90,000
4021	Copier Supplies & Maintenance	96,710	147,125	152,125
4030	Mapping Reproduction & Supplies	1,798	5,000	5,000
4040	Public Notice Advertising	13,734	24,269	24,269
4050	Security Services	140,089	260,000	168,725
4060	Field Travel & Other Expenses	986,879	1,008,994	1,038,794
4070	Appraisal Supplies	9,502	21,818	20,198
4080	Vehicle Gasoline & Maintenance	16,650	34,000	34,000
4090	Records Storage & Supplies	1,250	8,000	8,000
4092	Records Conversion Services	0	0	0
4097	Employee Recognition Activities	12,518	6,000	6,000
4100	Postage, Mailing, & Handling Svr.	1,801,313	2,293,000	2,147,000
4200	Professional Registration & Dues	54,037	75,000	70,000
4202	Seminars & Other Tuition	146,009	120,514	119,254
4212	Education Travel & Expenses	98,070	69,050	75,300
4213	Books, Manuals & Publications	221,446	201,634	199,776
4501	Printing, Forms, & Stationery	77,825	81,500	81,250
4530	Paper, Copier & Printer	128,815	220,230	125,230
TOTAL OFFICE & FIELD OPERATIONS		4,645,278	5,410,823	5,114,076

2012 BUDGET WITH COMPARISONS
2011 BUDGET & 2010 ACTUAL

Account Number	Account Name	2010 ACTUAL	2011 BUDGET	2012 BUDGET
<u>COMPUTER OPERATIONS</u>				
5010	Computer Leasing	69,164	0	0
5020	CPU & Related Maintenance	19,408	105,000	105,000
5030	Other Computer Maintenance	1,891	10,000	10,000
5040	Computer Supplies	23,228	34,850	34,850
5050	Software Lease & Maintenance	2,951,796	1,043,997	1,123,597
5060	Teleprocessing Lines & Installation	190	17,500	17,500
TOTAL COMPUTER OPERATIONS		3,065,677	1,211,347	1,290,947
<u>PROFESSIONAL SERVICES</u>				
5510	Financial Auditing	56,786	58,000	58,000
5520	Legal Services	5,069,481	5,830,000	5,830,000
5525	Arbitration Fees & Services	47,725	93,750	150,000
5526	State Office of Admin Hearings	0	125,000	250,000
5530	Appraisal Services	1,345,829	1,389,977	1,389,977
5550	Other Professional Services	499,960	713,665	564,770
5551	Mapping & Records Maintenance	643,299	950,100	1,104,722
TOTAL PROFESSIONAL SERVICES		7,663,080	9,160,492	9,347,469
<u>OFFICE SPACE, UTILITIES & RELATED</u>				
6100	Office Space	2,375,472	2,419,304	2,413,904
6150	Utilities	610,871	743,635	757,000
6200	Building & Fixture Maintenance	708,352	950,000	823,900
6400	Casualty & Liability Insurance	111,540	175,000	140,000
TOTAL OFFICE SPACE, UTILITIES & RELATED		3,806,235	4,287,939	4,134,804
<u>FIXED ASSETS PURCHASES</u>				
6501	Capital Purchases	204,679	225,000	225,000
TOTAL FIXED ASSETS PURCHASES		204,679	225,000	225,000
TOTAL BUDGET		<u>\$62,722,757</u>	<u>\$63,760,911</u>	<u>\$63,129,426</u>

TEXAS PROPERTY TAX CODE SECTION

The following schedules are provided pursuant to Section 6.06(a) of the Texas Property Tax Code:

Schedule of Positions

Schedule of Appraisal Review Board Positions

Salary Schedule and Provisions

General Provisions

Employee Benefits Schedule – General & Special Provisions

2012 Capital Expenditures

2012 Estimated Cost Allocation to Taxing Units

SCHEDULE OF APPRAISAL DISTRICT POSITIONS - 2012 BUDGET

Position	Salary Group	Number of Positions
Accountant IV	16	3
Accountant V	17	1
Accounts Examiner II	17	2
Accounts Examiner III	18	1
Accounts Examiner IV	20	1
Admin of Tech Prog I	17	7
Admin Tech I	8	18
Admin Tech II	11	12
Admin Tech III	13	15
Admin Tech IV	15	10
Administrative Assistant I	17	1
Administrative Assistant II	18	2
Administrative Secretary II	11	1
ADP Equipment Oper III	12	2
ADP Equipment Oper IV	13	1
ADP Supervisor III	16	1
Appraisal Education Coordinator	19	1
Appraisal Hearings Supervisor	20	1
Appraisal Information Specialist I	19	2
Appraisal Information Specialist III	T1	3
Appraiser I	15	50
Appraiser II	16	58
Appraiser III	17	43
Appraiser IV	18	14
Appraiser V	20	1
ARB Administrative Assistant	15	1
ARB Administrator	21	1
ARB Operations Analyst	20	1
ARB Support Specialist I	12	2
ARB Support Specialist II	14	2
ARB Support Supervisor	18	1
ARB Support Technician I	10	4
ARB Support Technician II	11	3
ARB Support Technician III	12	1
Assistant Chief Appraiser	-	2
Assistant Dir, Administration & Finance	D5	1
Assistant Director, Info & Assist	21	1
BIPD Project Specialist	T1	1
CAMA Design Analyst I	T1	2
CAPPA Valuation Analyst I	18	7
CAPPA Valuation Analyst II	19	1
Chief Accountant III	20	1
Chief Appraiser	-	1
Chief Deputy/Chief Legal Officer	-	1
Chief Information Officer	-	1
Commercial Field Supervisor	20	1
Commercial Valuation Analyst II	18	5
Commercial Valuation Analyst III	19	6
Commercial Valuation Analyst IV	20	4
Commercial Valuation Analyst V	21	2
Commissioned Security Officer II	13	4

SCHEDULE OF APPRAISAL DISTRICT POSITIONS - 2012 BUDGET

Position	Salary Group	Number of Positions
Commissioned Security Officer III	14	2
Development Section Supervisor	T3	1
Director, Administration & Finance	-	1
Director, Appraisal Operations	T4	1
Director, ARB Operations Division	D2	1
Director, Legal Services Division	T3	1
Div Director, Applications	T4	1
Div Director, Business & Industrial Prop	D4	1
Div Director, Commercial Property	T4	1
Div Director, Human Resources	D3	1
Div Director, Info & Assist	T3	1
Div Director, Jurisdiction Support	D2	1
Div Director, Residential	D4	1
Div Director, Review Appraisal	T3	1
Div Director, Special Audit	D4	1
Div Director, Systems	T4	1
Engineer IV	20	2
Executive Assistant	19	1
Exemption Specialist II	13	14
Exemption Specialist IV	17	5
GIS Programmer Analyst IV	21	1
GIS Technician IV	17	9
Hearings Specialist I	14	1
Hearings Specialist II	15	2
Hearings Specialist III	16	1
Hearings Supervisor I	18	1
Hearings Technician I	11	3
Hearings Technician II	12	2
HRIS Administrator	19	1
Imaging Technician III	11	2
Industrial Valuation Specialist	19	6
Information Systems Liaison II	D2	1
Internal Auditor	21	1
IS Special Projects Director	T2	2
IS Special Projects Director II	T3	1
Jurisdiction Coordinator II	18	2
Land Valuation Analyst II	18	4
Land Valuation Analyst III	19	4
Land Valuation Analyst IV	20	2
Land Valuation Analyst V	21	1
Legal Assistant	18	1
Legal Counsel I	T1	1
Legal Counsel II	T2	2
Legal Counsel III	T4	1
Mailroom/Courier	10	1
Manager, Ag Valuation	D2	1
Manager, Commercial Property	D3	1
Manager, Complex Property	D3	1
Manager, Industrial Section	D3	1
Manager, Personal Property Section	D3	1
Manager, Purchasing & Facilities	D1	1
Manager, Review Appraisal	D3	1

SCHEDULE OF APPRAISAL DISTRICT POSITIONS - 2012 BUDGET

Position	Salary Group	Number of Positions
Mgr, Personal Prop Corrections Section	D3	1
Network Administrator	D5	1
Network Service Technician	18	1
Operations Support Spec I	8	6
Operations Support Spec II	9	7
Operations Support Spec III	10	7
Paralegal I	15	1
Paralegal II	16	1
Paralegal/Collections	17	1
Payroll Specialist II	19	2
Personal Property Field Supervisor	20	1
Personnel Officer III	18	1
Processing Supervisor	T1	1
Program Administrator II	18	2
Program Administrator III	19	6
Program Administrator IV	20	2
Programmer Analyst I	18	2
Programmer Analyst II	20	2
Programmer Analyst III	21	2
Programmer Analyst V	T2	5
Programmer Analyst VI	T3	3
Programmer III	17	2
Public Information Coordinator	19	1
Purchaser II	15	2
Records Management Officer	19	1
Records Management Specialist	13	1
Repro Equip Supv IV	17	1
Research Analyst II	19	1
Research Associate I	17	3
Research Associate II	19	2
Research Associate III	21	2
Research Associate IV	T1	1
Research Specialist	18	1
Residential Field Manager	20	1
Residential Field Supervisor	20	1
Residential Valuation Analyst III	19	8
Residential Valuation Analyst IV	20	5
Residential Valuation Manager	21	1
Residential Valuation Supervisor	21	1
Review Appraiser I	19	5
Review Appraiser II	20	2
Security Supervisor	16	1
Senior Review Appraiser	T1	7
Software Analyst	T1	1
Supervising Appraiser I	19	14
Supervising Appraiser II	20	3
Supervising Examiner	21	1
Supervising Paralegal	18	1
Support Supervisor III	15	2
Support Supervisor IV	17	4
Systems Analyst II	18	1
Systems Support Spec III	14	3

SCHEDULE OF APPRAISAL DISTRICT POSITIONS - 2012 BUDGET

<u>Position</u>	<u>Salary Group</u>	<u>Number of Positions</u>
Systems Support Spec IV	16	3
Systems Support Spec VI	18	2
Systems Support Supervisor I	D1	1
Taxpayer Liaison Officer	20	1
Technical Assist Spec I	11	6
Technical Assist Spec III	13	35
Technical Assist Spec V	15	12
Telephone Information Spec I	12	7
Telephone Information Spec II	13	12
Telephone Information Spec III	15	1
Training & Development Specialist	18	1
		<u>623</u>

SCHEDULE OF APPRAISAL REVIEW BOARD POSITIONS
2012 BUDGET

Position	Salary Group	Number of Positions
ARB Member	per diem	153
Auxiliary ARB Member	hourly	23
TOTAL		176

2012 SALARY SCHEDULE AND PROVISIONS

A. Classified Positions Salary Schedule.

1. Salary groups C8 through C14:

SALARY GROUP

	C8	C9	C10	C11	C12	C13	C14	
1	23,708	25,226	26,801	28,552	30,449	32,450	34,615	
2	24,474	25,995	27,658	29,500	31,433	33,523	35,760	
3	25,226	26,801	28,552	30,449	32,450	34,615	36,922	
4	25,995	27,658	29,500	31,433	33,523	35,760	38,138	
5	26,801	28,552	30,449	32,450	34,615	36,922	39,371	
S	6	27,658	29,500	31,433	33,523	35,760	38,138	40,676
T	7	28,552	30,449	32,450	34,615	36,922	39,371	41,985
E	8	29,500	31,433	33,523	35,760	38,138	40,676	43,429
P	9	30,449	32,450	34,615	36,922	39,371	41,985	44,843
	10	31,433	33,523	35,760	38,138	40,676	43,429	46,293
	11	32,450	34,615	36,922	39,371	41,985	44,843	47,849
	12	33,484	35,728	38,124	40,657	43,356	46,319	49,424
	13	34,552	36,876	39,366	41,985	44,771	47,840	51,051
	14	35,653	38,062	40,647	43,356	46,233	49,414	52,731
	15	36,791	39,285	41,971	44,771	47,744	51,039	54,465

2. Salary Groups C15 through C21:

SALARY GROUP

	C15	C16	C17	C18	C19	C20	C21	
1	36,922	39,371	41,985	45,851	48,949	52,207	55,730	
2	38,138	40,676	43,429	47,390	50,542	53,924	57,573	
3	39,371	41,985	44,843	48,949	52,207	55,730	59,486	
4	40,676	43,429	46,293	50,542	53,924	57,573	61,417	
5	41,985	44,843	47,849	52,207	55,730	59,486	63,471	
S	6	43,429	46,293	49,422	53,924	57,573	61,417	65,613
T	7	44,843	47,849	51,031	55,730	59,486	63,471	67,736
E	8	46,293	49,422	52,711	57,573	61,417	65,613	70,040
P	9	47,849	51,031	54,424	59,486	63,471	67,736	72,316
	10	49,422	52,711	56,194	61,417	65,613	70,040	74,664
	11	51,031	54,424	58,021	63,471	67,736	72,316	77,092
	12	52,710	56,214	59,927	65,568	69,973	74,711	79,634
	13	54,444	58,065	61,898	67,734	72,284	77,186	82,260
	14	56,234	59,977	63,933	69,973	74,671	79,743	84,973
	15	58,083	61,950	66,035	72,286	77,137	82,385	87,776

B. Technical Positions Salary Schedule.

SALARY GROUP

	T1	T2	T3	T4
1	57,339	62,019	68,526	74,118
2	59,633	64,500	71,267	77,082
3	62,019	67,080	74,118	80,166
4	64,500	69,762	77,082	83,373
5	67,080	72,553	80,166	86,701
6	69,762	75,455	83,373	90,178
7	72,553	78,478	86,701	93,788
8	75,455	81,610	90,178	97,534
9	78,478	84,877	93,788	101,449
10	81,610	88,269	97,534	105,488
11	84,877	91,804	101,449	109,709
12	88,269	95,477	105,488	114,097
13	91,804	99,296	109,709	118,663
14	95,477	103,268	114,097	123,409
15	99,296	107,400	118,663	128,346

C. Director Positions Salary Schedule.

SALARY GROUP

	D1	D2	D3	D4	D5
1	57,508	58,726	60,223	64,718	68,771
2	59,358	60,855	62,352	66,848	70,712
3	61,280	62,779	64,278	68,771	72,776
4	63,222	64,720	66,219	70,712	74,930
5	65,284	66,782	68,283	72,776	77,065
6	67,440	68,938	70,436	74,930	79,378
7	69,573	71,071	72,570	77,065	81,666
8	71,888	73,385	74,885	79,378	84,026
9	74,173	75,674	77,171	81,666	86,465
10	76,535	78,034	79,530	84,026	89,006
11	78,974	80,474	81,970	86,465	91,623
12	81,519	83,049	84,537	89,006	94,316
13	84,146	85,708	87,184	91,623	97,089
14	86,859	88,450	89,915	94,316	100,390
15	89,658	91,281	92,729	97,089	103,803

D. Schedule of Positions Outside the Classification Schedule.

Chief Appraiser	\$180,000
Chief Deputy/Chief Legal Officer	\$151,000
Assistant Chief Appraiser	\$140,000
Assistant Chief Appraiser	\$132,000
Chief Information Officer	\$138,000
Director, Administration & Finance	\$116,000

- E. It is expressly provided that the chief appraiser may, with the approval of the board of directors, grant merit salary increases to district employees. Such merit increases shall be subject to the following:
1. The maximum shall not exceed the amount specifically budgeted as "Allowance for Merit Increases".
 2. For an employee to be eligible for a merit salary increase, the following criteria must be met:
 - (i) the employee must have been employed by the district for at least six continuous months prior to the award;
 - (ii) at least six months must have elapsed since the employee's last promotion;
 - (iii) the employee's job performance and productivity must be consistently above that normally expected or required as evidenced by performance evaluation; and,
 - (iv) an employee may not receive more than one merit salary increase in a single fiscal year.
- F. In lieu of a merit salary increase the chief appraiser may, with the approval of the board of directors, award quality service incentive salary increases, disbursed as a single payment, to employees under the following conditions:
1. The employee must have been employed by the district in a full-time position for at least 12 continuous months and must not have received a promotion or merit salary increase for a minimum of 6 months prior to the award;
 2. The employee's high level of performance must be documented by the performance evaluation system;
 3. The lump sum award may be no more than 6.8% of the employee's annual base rate of pay;
 4. Six months must have elapsed since the employee's last quality salary increase;
 5. Funding for such increases will be made only from the overall limits specified under Paragraph E, above; and,
 6. A quality salary increase is a one-time payment and does not increase the salary level for the following year.
- G. The chief appraiser is authorized to award achievement pay according to the district's policy under the Career Development Program. The program provides for one-time achievement payments to employees having earned certain professional designations or, for non-appraisal employees, for completing approved coursework. Employees who receive or hold more than one advanced designation (IAAO, MAI, CAI, TALCB) may be awarded recurring annual achievement payments.

- H. The chief appraiser may substitute other classified position titles for those listed in this Schedule of Positions when the chief appraiser finds that such reclassifications are necessary for effective performance of the district's responsibilities. The chief appraiser is further authorized to reassign an employee serving in a classified position to another classified position or to move the employee to another rate within the employee's salary group range as necessary to maintain desirable salary relationships:
1. between and among employees of the district; or
 2. between employees of the district and employees who hold similar positions in the relevant labor market, or
 3. to retain staff essential to the district's succession plans.
- I. The chief appraiser is authorized to pay salaried exempt employees straight time for compensatory time worked during periods when paid leave is restricted.

GENERAL PROVISIONS

- A. Mileage Allowance. Employees, board members, or persons assigned to the district by another agency under contract who use their privately owned vehicles on official district business are authorized reimbursement at the rate authorized by the Internal Revenue Service as the standard mileage deduction rate (currently \$0.51/mile for 2011). Appraisers performing as group leaders, or who are assigned to pre-review, review and quality control functions are authorized an "idling allowance" of \$1.00 per hour in addition to reimbursement for actual mileage as provided in the district's appraisal manual. The chief appraiser is authorized to pay a monthly automobile allowance for appraisal positions whose job responsibilities require that they spend the majority of their time outside the district headquarters in an amount not to exceed \$450 per month. Department heads shall annually prepare a list of the position numbers for which the monthly allowance is authorized. The total amount paid under this provision may not exceed the amount allocated in this budget for that purpose. In addition, commissioned officers and employees assigned to the Special Audit Division who engage in investigations or field audits are entitled to the same allowance for official use of their personal automobiles. If the allowance is insufficient to reimburse a designated employee for miles actually driven in the conduct of district business, that employee's reimbursement for the period will be calculated at the standard mileage rate.
- B. Expense Allowance. The following listed positions are authorized an expense allowance in lieu of in-district mileage and incidental in-district expenses at the monthly rate indicated:

Chief Appraiser	\$850
Chief Deputy/Chief Legal Officer	\$550
Assistant Chief Appraiser	\$550
Assistant Chief Appraiser	\$550
Chief Information Officer	\$550
Director, Administration	\$550
Director, Information & Assistance	\$550

- C. Uniform Cleaning Reimbursement. Commissioned security officers who are required to regularly wear district-provided uniforms are entitled to reimbursement for the actual cost of professional uniform cleaning in an amount not to exceed \$45.00 per month.
- D. Cell Phone Allowance. In lieu of providing a district-owned cellular phone to an employee whose duties require it, the chief appraiser is authorized to pay a monthly cellular phone allowance as follows: \$25 to \$45 per month, depending on the number of minutes of business use projected, for basic cellular service, and an additional \$50 per month for data services if the chief appraiser determines that data services are appropriate. An employee who receives a cellular phone allowance under this provision must, at his or her own expense, obtain equipment and cellular services meeting minimum specifications that are approved by the chief appraiser or his designee. The equipment and service must be in working order at all times during the period for which an allowance is paid. The total amount paid under this provision may not exceed the amount allocated in this budget for cellular phone and data services.

E. Travel Expenses.

1. Non-overnight Travel.

- a. The chief appraiser, a member of the board of directors, a district employee, or a person assigned to the district by another agency under contract who has been designated to represent the chief appraiser or a board member, or a district employee who is traveling with the chief appraiser or a board member may receive reimbursement of actual expenses for meals when traveling outside the district's boundaries. The meal receipts must be attached to the travel expense report if the amount claimed for a meal exceeds \$8.00.
- b. Other employees may be reimbursed for meal expenses incurred on a day the employee conducts official business outside the district's boundaries for no fewer than six consecutive hours on the day the expenses are incurred in an amount not to exceed \$30 per day. However, the maximum reimbursement for breakfast may not exceed \$8.00, nor exceed \$15 each for lunch or dinner. Meal receipts must be attached to the travel expense report if the amount claimed for a meal exceeds \$8.00.

2. Overnight Travel.

- a. The chief appraiser, a member of the board of directors, a district employee or a person assigned to the district by another agency under contract who has been designated to represent the chief appraiser or a board member, or a district employee who is traveling with the chief appraiser or a board member may receive reimbursement for actual expenses for meals, lodging, and incidental expenses authorized by this section. In lieu of claiming actual expenses, a person may elect to be reimbursed in the manner provided for in subsection 2.b. of this section.
- b. Other employees, as well as persons enumerated in subsection 2.a. of this section who elect to do so, may be reimbursed for actual expenses of lodging at a commercial lodging establishment and an allowance for meals in an amount not to exceed the maximum per diem allowance authorized for that locality in the current federal travel regulations unless the chief appraiser determines, in advance of the travel, that local conditions necessitate a change in the lodging rate for a particular location. An employee may reduce the maximum meal reimbursement rate for a locality and use the reduction to increase the maximum lodging reimbursement rate for the locality, and may also be reimbursed for authorized incidental expenses. In calculating the applicable meal allowance for a particular locality, the amounts allowed for the first and last day of travel are reduced to 50% of the daily federal rate if the person begins travel after 1 p.m. on the first day or returns and ends travel before 1 p.m. on the last day.
- c. A person authorized to be reimbursed for overnight travel expenses may receive reimbursement for the person's actual expenses for meals and lodging when traveling outside the continental United States.
- d. Persons who are authorized to claim actual expenses and elect to do so must provide lodging and meal receipts with their travel expense report. An employee who claims expenses on a per diem basis must submit lodging receipts with the travel expense report.

- e. Allowable incidental expenses include taxes levied on lodging, taxi fare, airport limousine service, airport or other parking charges, and business-related telephone calls and/or reasonable internet connection charges. Receipts for incidental expenses must be attached to the travel expense report.
3. Transportation Expenses.
 - a. Employees, board members, or persons assigned to the district by another agency under contract who travel outside the district by personal auto will be reimbursed for mileage at the same rate used for in-district mileage. Travel must be by the most direct route. If two or more employees are attending the same business function, they should travel together if possible to minimize mileage expense. A person's total mileage reimbursement for a trip may not exceed the cost of round trip air travel by coach or economy class. The chief appraiser may require an employee traveling outside the district to use a district-owned vehicle instead of the employee's personal vehicle or other form of conveyance.
 - b. Persons who travel by air must fly coach or economy class. All flight arrangements should be made through the district's travel coordinator in the Office of Chief Appraiser.
 4. Purchase of Alcoholic Beverages Prohibited. A person who travels on official business may not claim reimbursement from district funds for the purchase of alcoholic beverages.
 5. Completion of Travel Expense Reports. After completion of authorized out-of-district travel, the person may not be reimbursed for travel expenses until the person submits a written travel report on the form prescribed by the chief appraiser. The form must clearly outline the official purpose of the travel and summarize, on a daily basis, the duties performed and expenses incurred or per diem claimed.
- F. Appraisal Review Board Member Per Diem and Per Diem and Duties of ARB Officers.
1. ARB members other than auxiliary members are compensated at a flat per diem rate for each day of service on the appraisal review board that equals or exceeds eight hours, exclusive of lunch. The per diem rate for such members shall be paid as follows:

<u>Term of Service on the Board</u>	<u>Per Diem</u>
First Term	\$162 per day
Second Term	\$180 per day
Third Term	\$198 per day

The board of directors may provide a per diem of up to \$205 per day for the chairman of the ARB. Service shall mean sitting as a member of a panel, participating at a meeting of the full board, or attending training required by law or approved by the board of directors. The board of directors may provide that

service for an officer of the ARB includes such other activities as the board may prescribe. The chairman of the appraisal review board determines panel and training schedules for both regular and auxiliary ARB members in consultation with the ARB administrator.

2. A member must serve for a minimum of eight hours, exclusive of lunch, to receive the full per diem. This is not intended to imply that member service is limited to 8 hours in a day. It is anticipated that members will serve the number of hours required to properly discharge their obligations. For service of two and one-quarter hours or less, a member shall receive a partial per diem payment of \$50. For service of more than two and one-quarter and less than eight hours, the member shall receive a payment calculated by multiplying the number of hours served by an hourly rate, which is computed by dividing the daily per diem rate by eight. Regardless of the number of hours served in excess of eight in a 24-hour period, a member will not be compensated at more than the maximum daily rate specified above.

G. Auxiliary Appraisal Review Board Member Compensation. Auxiliary members are compensated for the number of hours served sitting as a member of a panel or attending training as required by law or approved by the board of directors. An auxiliary ARB member may not serve more than 40 hours in a one-week period. The hourly rate for service as an auxiliary board member, exclusive of lunch, is:

<u>Term of Service on the Board</u>	<u>Rate</u>
First Term	\$20.25 per hour
Second Term	\$22.50 per hour
Third Term	\$24.75 per hour

H. Appraisal Review Board Attorney. The Appraisal Review Board shall use the services of the county attorney for legal counsel. In the event the county attorney is unable or declines to represent the board in a lawsuit to which the board is made a party, the board may employ and compensate private counsel, subject to a total annual appropriation of \$5,000.

I. Reappropriations. Monies received by the district as payment for copying charges are reappropriated to the district to offset the cost of making such copies. Monies received by the district under a Grant or Interlocal Contract are appropriated to the district to pay the cost of conducting the activity or activities authorized by such Grant or Contract. To the extent penalties may be imposed under any section of the Tax Code, penalty monies actually received are reappropriated to the district to offset the cost of operations, less any amounts required by law to be remitted to the appropriate taxing units.

J. Vanpool Subsidy. The district is a member of the METRO STAR Vanpool program. Employees who participate are authorized a monthly subsidy of \$35.00. Participation is limited to an appropriation of \$37,970.

K. Employee Recognition Activities. There is appropriated the sum of \$10,000 to be used for service awards and other employee recognition activities as approved by the board of directors.

EMPLOYEE BENEFITS SCHEDULE
GENERAL & SPECIAL PROVISIONS

- A. Health and Dental Benefits. The district provides health and dental benefits for all full time regular employees. New employees are covered on the first day of the month following a 30-day waiting period. Under the district's Flexible Benefits Plan, employees may select from a variety of coverage, but must select basic health coverage. The cost of coverage selections under the plan, which exceeds the provided allowance, is borne by the employee. The board of directors determines the amount of the allowance for employees and retirees when health and dental contracts are renewed near the end of the year. Eligible retirees may continue coverage under the district's health plan until age 65 or eligible for Medicare. Retirees eligible for Medicare may enroll in a Medicare Supplement Plan offered by the Texas Association of Counties.
- B. Life and Disability Insurance. The district also provides life and disability insurance to all full time regular employees. The cost of life and disability insurance for the employee is paid by the district. Employees may purchase additional life and accidental death insurance for themselves and their dependents under the Flexible Benefits Plan. Retirees are not eligible for coverage under the life and disability plans.
- C. Texas County & District Retirement System (TCDRS). This budget provides funding for the employee retirement plan. The employee contribution rate is 7% of salary and the district contribution rate is composed of a TCDRS actuarial determination plus an amount for an annuitant COLA if authorized by the board of directors, and the supplemental death benefit component. The TCDRS Supplemental Death Benefits Fund provides for a lump-sum death benefit payment to the beneficiary of a deceased employee-member equal to a year's salary in addition to a return of the deceased's personal deposits and interest earnings or a Deferred Service Retirement pension benefit. Upon the death of a retired member, the beneficiary is provided a lump-sum payment equal to \$5,000.
- D. Workers' Compensation Insurance. All district employees, whether full or part time, members of the board of directors and the appraisal review board are protected with workers' compensation insurance. This budget provides coverage for two classifications of employees, outside appraisers and administrative/clerical. The district participates in the Texas Municipal League Intergovernmental Risk Pool.
- E. Unemployment Insurance. The district provides unemployment insurance for all district employees.
- F. Social Security. District employees do not participate in the federal Old Age, Survivors, and Disability Insurance (OASDI) program. Part-time employees who are not members of the Texas County & District Retirement System and members of the appraisal review board are required to contribute to Social Security. This budget provides for the employer's matching amount.
- G. Federal Medicare Coverage. Most district employees and all members of the appraisal review board participate in the Medicare portion of the Federal Insurance Contribution Act (Social Security). Employees and appraisal review board members contribute to this program at a rate of 1.45% of wages paid. Funding is provided in this budget for the employer's matching amount.

- H. Longevity Pay. All full time regular employees, beginning with the first pay period after their first year of service with the district, are entitled to longevity pay calculated on the basis of \$5.00 per month per year of service, not to exceed \$150.00 per month. Employees returning to employment with the district after a break in service of less than five years are not entitled to longevity pay until after completing one year of continuous service. After the one-year waiting period, the employee's prior service of whole years is included in the calculation of longevity pay.
- I. Sick Leave. All full time regular employees are entitled to sick leave subject to the following conditions:
1. An employee will earn sick leave entitlement beginning with the first day of employment with the district and ending on the last day of duty. Sick leave entitlement shall be earned at the rate of 3.6920 hours per regular pay period, not to exceed 12 days per year, and shall accumulate with the unused amount of such leave carried forward each pay period. Unpaid time does not earn sick leave.
 2. Sick leave may be taken any time after accrual, subject to the terms set forth in the district's sick leave policy.
 3. An employee who resigns, is dismissed, or separated from district employment may not be paid for unused sick leave, but the estate of a district employee who dies while employed by the district shall be paid one-half of the employee's unused sick leave, or for 80 hours of sick leave, whichever is less.
- J. Employee Vacations. All full time regular employees are entitled to vacation leave. Such entitlement is calculated on 26 pay periods per year in accordance with the following schedule:

<u>Years of District Service</u>	<u>Hours Earned Per Pay Period</u>	<u>Maximum Hours That Carry Over To Next Year</u>
First 2 years	3.23	168
2 to under 5 years	3.69	288
5 to under 10 years	4.15	324
10 to under 15 years	4.61	360
15 to under 20 years	5.53	432
20 to under 25 years	6.46	504
25 to under 30 years	7.38	576
30 or more years	8.30	647

Vacation with pay may not be granted until the employee has had continuous employment with the district for six months, although credit will be earned during that period. The chief appraiser may authorize additional unpaid vacation leave as a supplement to vacation with pay. An employee who resigns, is dismissed, or separated from district employment is entitled to be paid for all vacation time duly accrued at the time of separation, provided the employee has had continuous employment with the district for six months. For an employee who has a break in service, total HCAD employment is calculated in the same manner as with longevity pay. After a one-year waiting period, the employee's prior service of whole years is included in the calculation of vacation hours.

- K. Emergency Leave. The chief appraiser may grant emergency leave of up to three working days to a full time regular employee because of a death of the employee's spouse, parent, step-parent, child, step-child, brother, sister, grandparent, grandchild, spouse's parent, or spouse's children. The chief appraiser may grant leave for any other purpose that justifies emergency leave.

- L. Other Paid Leaves. Full time regular employees of the district are entitled to paid leaves for holidays, military duty, and jury duty in accordance with the district's policy on such leaves.

2012 CAPITAL EXPENDITURES

ORG	ACCT	ITEM	QTY	NEW (N) REPL (R)	UNIT COST	TOTAL COST
6003	6501	Pbx Replacement	1	R	225,000	<u>225,000</u> \$225,000

2012 ESTIMATED COST ALLOCATION TO TAXING UNITS

The Harris County Appraisal District is funded by the taxing units it serves. As provided in Section 6.06(d), Tax Code, "(E)ach taxing unit participating in the district is allocated a portion of the budget equal to the proportion that the total dollar amount of property taxes imposed in the district by the unit for the tax year in which the budget proposal is prepared bears to the sum of the total dollar amount of property taxes imposed in the district by each participating unit for that year."

Section 6.06(d), Tax Code, requires "(E)ach taxing unit shall pay its allocation in four equal payments to be made at the end of each calendar quarter, and the first payment shall be made before January 1 of the year in which the budget takes effect." It has been the practice of the Harris County Appraisal District to invoice the taxing units for their quarterly payments approximately 45 days prior to the due date. Since the first quarter billing for 2012 will be prepared and delivered on or about November 15, 2011, and before the time some 2011 tax rates have been determined or received, the first quarter 2012 will be invoiced using incomplete information. The second quarter invoice will reflect the necessary corrections.

ESTIMATED 2012 COST ALLOCATION TO TAXING UNITS

TAXING UNIT	2010 TAXABLE VALUE AS OF 07/15/11	2010 TOTAL TAX RATE	2010 TOTAL LEVY	2010 FROZEN LEVY LOSS	2010 ADJ. LEVY FOR CALC.	2012 ALLOCATION RATIO	2012 BUDGET ALLOCATION
1 HOUSTON ISD	\$104,391,478,243	\$1.156700	\$1,207,496,245	\$38,312,837	\$1,169,183,408	0.1617448949	\$9,774,152
2 DEER PARK ISD	6,687,764,060	1.396700	93,407,994	626,820	92,781,174	0.0128353526	775,633
3 WALLER ISD	739,287,931	1.440000	10,645,746	302,958	10,342,788	0.0014308218	86,464
4 CYPRESS-FAIRBANKS ISD	31,048,899,372	1.430000	443,999,245	4,081,180	439,918,065	0.0608582885	3,677,631
5 CROSBY ISD	1,312,083,984	1.440000	18,894,009	933,914	17,960,095	0.0024846004	150,143
6 CHANNELVIEW ISD	2,273,766,428	1.293680	29,415,260	487,483	28,927,777	0.0040018703	241,831
7 NEW CANEY ISD	55,774,036	1.540000	858,920	19,652	839,268	0.0001161044	7,016
8 ALIEF ISD	10,615,935,333	1.340000	142,253,537	1,069,306	141,184,231	0.0195314340	1,180,273
9 ALDINE ISD	12,830,573,180	1.300544	166,867,253	1,733,465	165,133,788	0.0228446170	1,380,487
12 NORTH FOREST ISD	1,523,811,953	1.370000	20,876,224	3,042,750	17,833,474	0.0024670837	149,084
15 GALENA PARK ISD	5,493,159,647	1.513400	83,133,482	1,066,572	82,066,910	0.0113531408	686,064
16 GOOSE CREEK ISD	5,565,086,522	1.302130	72,464,660	1,416,345	71,048,315	0.0098288277	593,950
17 KLEIN ISD	12,722,861,819	1.410000	179,392,347	3,006,078	176,386,269	0.0244012859	1,474,556
18 HUMBLE ISD	10,541,089,670	1.520000	160,224,561	3,916,936	156,307,625	0.0216236052	1,306,702
19 KATY ISD	11,906,560,846	1.526600	181,765,558	2,367,642	179,397,916	0.0248179173	1,499,732
20 LA PORTE ISD	5,782,024,691	1.325000	76,611,823	268,467	76,343,356	0.0105613439	638,216
21 PASADENA ISD	9,653,149,190	1.350000	130,317,516	3,188,314	127,129,202	0.0175870606	1,062,776
23 SHELDON ISD	4,004,072,840	1.430000	57,258,240	124,630	57,133,610	0.0079038666	477,626
24 SPRING ISD	7,281,496,489	1.460000	106,309,843	905,336	105,404,507	0.0145816651	881,162
25 SPRING BRANCH ISD	18,133,780,607	1.394500	252,875,574	15,158,114	237,717,460	0.0328858460	1,987,273
26 TOMBALL ISD	4,754,778,765	1.360000	64,664,992	1,004,303	63,660,689	0.0088068231	532,191
27 CLEAR CLEEK ISD	10,253,962,673	1.360000	139,453,882	3,050,361	136,403,521	0.0188700703	1,140,308
28 DAYTON ISD	1,265,932	1.208000	15,292	737	14,555	0.0000020136	122
29 PEARLAND ISD	125,692,602	1.419400	1,784,081	443,251	1,340,830	0.0001854905	11,209
30 HUFFMAN ISD	804,029,992	1.470000	11,819,241	414,746	11,404,495	0.0015776985	95,339
31 STAFFORD MSD	6,185,895	1.110000	68,663	1,139	67,525	0.0000093414	564
40 HARRIS COUNTY	271,696,782,484	0.388050	1,054,319,418	0	1,054,319,418	0.1458546045	8,813,910
41 HARRIS CO FLOOD CONTROL DIST.	263,635,310,980	0.029230	77,060,603	0	77,060,603	0.0106605679	644,212
42 PORT OF HOUSTON AUTHORITY	263,600,109,240	0.020540	54,143,465	0	54,143,465	0.0074902098	452,629
43 HARRIS COUNTY HOSPITAL DIST.	263,638,979,765	0.192160	506,608,651	0	506,608,651	0.0700842679	4,235,152
44 HARRIS COUNTY DEPT OF EDUCATION	271,838,196,122	0.006581	17,889,672	0	17,889,672	0.0024748582	149,554
45 LONE STAR COLLEGE SYSTEM DIST.	86,588,650,613	0.117600	101,828,254	0	101,828,254	0.0140869261	851,265
46 LEE JR COLLEGE DISTRICT	5,459,561,053	0.252000	13,758,094	0	13,758,094	0.0019032955	115,015
47 SAN JACINTO JR COLLEGE DIST.	36,721,688,296	0.176277	64,731,889	0	64,731,889	0.0089550130	541,146
48 HOUSTON COMM COLLEGE SYSTEM	120,168,650,084	0.092220	110,819,530	0	110,819,530	0.0153307797	926,430
51 BAYTOWN, CITY OF	2,248,169,989	0.787030	17,693,772	0	17,693,772	0.0024477573	147,917
52 BELLAIRE, CITY OF	3,206,212,748	0.399900	12,821,645	0	12,821,645	0.0017737471	107,187
53 BUNKER HILL VILLAGE. CITY OF	1,319,382,352	0.273040	3,602,442	0	3,602,442	0.0004983620	30,116
54 DEER PARK, CITY OF	1,732,490,319	0.705000	12,214,057	0	12,214,057	0.0016896934	102,107
55 HEDWIG VILLAGE, CITY OF	642,240,613	0.222995	1,432,164	0	1,432,164	0.0001981257	11,973
56 EL LAGO, CITY OF	187,960,899	0.477760	898,002	0	898,002	0.0001242296	7,507
57 GALENA PARK, CITY OF	352,782,400	1.037450	3,659,941	0	3,659,941	0.0005063164	30,596
58 CITY OF FRIENDSWOOD	487,316,340	0.585100	2,851,288	0	2,851,288	0.0003944473	23,836

ESTIMATED 2012 COST ALLOCATION TO TAXING UNITS

TAXING UNIT	2010 TAXABLE VALUE AS OF 07/15/11	2010 TOTAL TAX RATE	2010 TOTAL LEVY	2010 FROZEN LEVY LOSS	2010 ADJ. LEVY FOR CALC.	2012 ALLOCATION RATIO	2012 BUDGET ALLOCATION
59 CITY OF PEARLAND	420,677,547	0.665100	2,797,926	0	2,797,926	0.0003870653	23,390
60 HILSHIRE VILLAGE, CITY OF	120,459,610	0.637393	767,801	0	767,801	0.0001062177	6,419
61 HOUSTON, CITY OF	141,687,910,797	0.638750	905,031,554	0	905,031,554	0.1252021134	7,565,892
62 HUMBLE, CITY OF	1,209,201,076	0.200000	2,418,402	0	2,418,402	0.0003345619	20,217
63 CITY OF KATY	519,692,499	0.593720	3,085,518	0	3,085,518	0.0004268507	25,794
64 MISSOURI CITY	198,047,503	0.528400	1,046,483	0	1,046,483	0.0001447705	8,748
65 HUNTERS CREEK VILLAGE, CITY OF	1,811,915,740	0.185000	3,352,044	0	3,352,044	0.0004637220	28,022
66 JACINTO CITY, CITY OF	338,778,306	0.801526	2,715,396	0	2,715,396	0.0003756481	22,700
67 CITY OF LEAGUE CITY	74,829,614	0.616000	460,950	0	460,950	0.0000637679	3,853
70 JERSEY VILLAGE, CITY OF	827,521,523	0.742500	6,144,347	0	6,144,347	0.0008500093	51,366
71 LA PORTE, CITY OF	2,215,028,446	0.710000	15,726,703	0	15,726,703	0.0021756329	131,472
72 MORGANS POINT, CITY OF	170,041,030	0.646000	1,098,465	0	1,098,465	0.0001519617	9,183
73 NASSAU BAY, CITY OF	438,247,362	0.692120	3,033,198	0	3,033,198	0.0004196127	25,357
74 PASADENA, CITY OF	5,632,483,365	0.591593	33,321,379	0	33,321,379	0.0046096813	278,560
75 PINEY POINT VILLAGE, CITY OF	1,679,624,750	0.215140	3,613,545	0	3,613,545	0.0004998980	30,209
76 SEABROOK, CITY OF	840,939,141	0.626807	5,271,065	0	5,271,065	0.0007291994	44,065
77 SHOREACRES, CITY OF	95,370,443	0.824670	786,491	0	786,491	0.0001088033	6,575
78 SOUTH HOUSTON, CITY OF	484,726,364	0.673160	3,262,984	0	3,262,984	0.0004514014	27,278
79 SOUTHSIDE PLACE, CITY OF	505,612,816	0.347833	1,758,688	0	1,758,688	0.0002432970	14,702
80 SPRING VALLEY, CITY OF	653,123,875	0.539760	3,525,301	0	3,525,301	0.0004876904	29,471
82 TAYLOR LAKE VILLAGE, CITY OF	342,320,726	0.348600	1,193,330	0	1,193,330	0.0001650853	9,976
83 TOMBALL, CITY OF	1,119,392,868	0.251455	2,814,769	0	2,814,769	0.0003893954	23,531
84 WEBSTER, CITY OF	1,320,901,378	0.257500	3,401,321	0	3,401,321	0.0004705389	28,434
85 WEST UNIVERSITY PLACE, CITY OF	4,076,203,824	0.374110	15,249,485	0	15,249,485	0.0021096146	127,483
86 CITY OF WALLER	51,754,624	0.498430	257,961	0	257,961	0.0000356863	2,157
100 HARRIS COUNTY MUD 421	7,306,554	1.250000	91,332	0	91,332	0.0000126349	764
101 ADDICKS UD	196,924,627	0.655000	1,289,856	0	1,289,856	0.0001784388	10,783
105 HARRIS COUNTY MUD 264	182,357,519	0.760000	1,385,917	0	1,385,917	0.0001917279	11,586
106 HARRIS COUNTY MUD 502 9NEW0	2,143,610	1.500000	32,154	0	32,154	0.0000044482	269
108 HARRIS COUNTY MUD 255	160,701,988	0.500000	803,510	0	803,510	0.0001111576	6,717
110 BAKER ROAD MUD	173,058,411	0.565000	977,780	0	977,780	0.0001352661	8,174
111 Bammel UD	121,150,329	0.445000	539,119	0	539,119	0.0000745818	4,507
112 BARKER CYPRESS MUD	214,998,517	0.930000	1,999,486	0	1,999,486	0.0002766090	16,715
116 BEECHNUT MUD	59,098,595	0.850000	502,338	0	502,338	0.0000694935	4,199
117 BILMA PUD	338,428,251	0.560000	1,895,198	0	1,895,198	0.0002621818	15,843
118 BISSENET MUD	266,191,418	0.600000	1,597,149	0	1,597,149	0.0002209496	13,352
120 WEST RANCH MGMT DIST (NEW)	0	0.650000	0	0	0	0.0000000000	0
121 BRIDGESTONE MUD	827,197,292	0.750000	6,203,980	0	6,203,980	0.0008582589	51,864
124 BAYBROOK MUD 1	158,594,796	1.110000	1,760,402	0	1,760,402	0.0002435341	14,717
125 WOODLANDS TOWNSHIP (NEW)	492,661,040	0.327400	1,612,972	0	1,612,972	0.0002231387	13,484
128 HARRIS COUNTY MUD 250	40,569,422	1.260000	511,175	0	511,175	0.0000707159	4,273
129 HARRIS COUNTY MUD 276	238,941,296	0.790000	1,887,636	0	1,887,636	0.0002611357	15,780
131 CNP UD	399,623,511	0.360000	1,438,645	0	1,438,645	0.0001990222	12,027

ESTIMATED 2012 COST ALLOCATION TO TAXING UNITS

TAXING UNIT	2010 TAXABLE VALUE AS OF 07/15/11	2010 TOTAL TAX RATE	2010 TOTAL LEVY	2010 FROZEN LEVY LOSS	2010 ADJ. LEVY FOR CALC.	2012 ALLOCATION RATIO	2012 BUDGET ALLOCATION
134 CASTLEWOOD MUD	114,371,230	0.870000	995,030	0	995,030	0.0001376525	8,318
135 CEDAR BAYOU PARK UD	21,801,736	0.100000	21,802	0	21,802	0.0000030161	182
136 CHARTERWOOD MUD	259,330,060	0.640000	1,659,712	0	1,659,712	0.0002296047	13,875
137 CHELFORD CITY MUD	103,554,482	0.430000	445,284	0	445,284	0.0000616007	3,722
138 CHELFORD ONE MUD	146,815,525	0.510000	748,759	0	748,759	0.0001035834	6,259
139 CHIMNEY HILL MUD	237,781,828	0.870000	2,068,702	0	2,068,702	0.0002861843	17,294
140 CIMARRON MUD	347,229,363	0.570000	1,979,207	0	1,979,207	0.0002738037	16,546
141 CLAY ROAD MUD	123,858,454	0.910000	1,127,112	0	1,127,112	0.0001559247	9,422
142 CLEAR LAKE CITY WATER	4,389,324,744	0.280000	12,290,109	0	12,290,109	0.0017002144	102,743
145 CORNERSTONE MUD	247,979,918	0.370000	917,526	0	917,526	0.0001269306	7,670
146 CROSBY MUD	186,757,183	0.545000	1,017,827	0	1,017,827	0.0001408062	8,509
147 CY-CHAMP PUD	316,098,505	0.510000	1,612,102	0	1,612,102	0.0002230183	13,477
148 CYPRESS CREEK UD	142,851,277	0.170000	242,847	0	242,847	0.0000335955	2,030
149 CYPRESS FOREST PUD	556,225,102	0.310000	1,724,298	0	1,724,298	0.0002385395	14,415
150 CYPRESS HILL MUD 1	425,733,765	0.990000	4,214,764	0	4,214,764	0.0005830707	35,235
151 CYPRESS-KLEIN UD	202,897,920	0.245000	497,100	0	497,100	0.0000687688	4,156
152 CYPRESSWOOD UD	134,833,341	0.250000	337,083	0	337,083	0.0000466321	2,818
153 CAMFIELD MUD	12,638,217	0.500000	63,191	0	63,191	0.0000087419	528
154 SPECTRUM MANAGEMENT DISTRICT	52,952,439	0.100000	52,952	0	52,952	0.0000073254	443
156 HARRIS COUNTY MUD 278	254,045,117	1.182000	3,002,813	0	3,002,813	0.0004154093	25,103
159 HARRIS COUNTY MUD 290	309,049,623	1.120000	3,461,356	0	3,461,356	0.0004788441	28,936
161 MEADOWHILL REGIONAL MUD	286,710,985	0.940000	2,695,083	0	2,695,083	0.0003728380	22,530
162 DOWDELL PUD	178,269,243	0.850000	1,515,289	0	1,515,289	0.0002096251	12,668
163 EL DORADO UD	94,622,365	0.515000	487,305	0	487,305	0.0000674138	4,074
164 EMERALD FOREST UD	267,050,803	0.670000	1,789,240	0	1,789,240	0.0002475236	14,958
165 ENCANTO REAL UD	49,757,204	0.940000	467,718	0	467,718	0.0000647041	3,910
170 HARRIS COUNTY MUD 286	411,743,202	0.180000	741,138	0	741,138	0.0001025290	6,196
171 FALLBROOK UD	195,742,736	0.367000	718,376	0	718,376	0.0000993802	6,005
172 FAULKEY-GULLY MUD	447,682,189	0.490000	2,193,643	0	2,193,643	0.0003034687	18,338
174 FOREST HILLS MUD	57,305,178	1.280000	733,506	0	733,506	0.0001014733	6,132
175 FOUNTAINHEAD MUD	190,977,257	0.550000	1,050,375	0	1,050,375	0.0001453089	8,781
176 FRY ROAD MUD	199,037,246	0.500000	995,186	0	995,186	0.0001376741	8,320
179 HARRIS COUNTY MUD 304	172,341,741	0.850000	1,464,905	0	1,464,905	0.0002026550	12,246
180 HARRIS COUNTY MUD 275	52,251,304	1.350000	705,393	0	705,393	0.0000975840	5,897
182 GRANT ROAD PUD	156,168,985	0.670000	1,046,332	0	1,046,332	0.0001447497	8,747
183 GREENWOOD UD	61,078,444	1.060000	647,431	0	647,431	0.0000895657	5,412
185 GREEN TRAILS MUD	196,383,147	0.440000	864,086	0	864,086	0.0001195377	7,224
186 GREENS PARKWAY MUD	257,257,494	0.920000	2,366,769	0	2,366,769	0.0003274190	19,786
187 HARRIS COUNTY MUD 287	33,904,545	1.350000	457,711	0	457,711	0.0000633198	3,826
190 HARRIS COUNTY MUD 284	126,747,060	1.150000	1,457,591	0	1,457,591	0.0002016432	12,185
193 HARRIS COUNTY MUD 285	422,059,767	0.930000	3,925,156	0	3,925,156	0.0005430063	32,814
197 HARRIS COUNTY MUD 401	68,787,874	1.250000	859,848	0	859,848	0.0001189515	7,188
200 HARRIS COUNTY FWSD 1A	32,198,198	0.550000	177,090	0	177,090	0.0000244987	1,480

ESTIMATED 2012 COST ALLOCATION TO TAXING UNITS

TAXING UNIT	2010 TAXABLE VALUE AS OF 07/15/11	2010 TOTAL TAX RATE	2010 TOTAL LEVY	2010 FROZEN LEVY LOSS	2010 ADJ. LEVY FOR CALC.	2012 ALLOCATION RATIO	2012 BUDGET ALLOCATION
205 HARRIS COUNTY MUD 321	104,611,527	1.050000	1,098,421	0	1,098,421	0.0001519556	9,183
206 HARRIS COUNTY FWSD 6	551,376,760	0.285000	1,571,424	0	1,571,424	0.0002173908	13,137
207 HARRIS COUNTY MUD 282	35,524,087	1.100000	390,765	0	390,765	0.0000540585	3,267
208 HARRIS COUNTY MUD 316	78,110,009	0.750000	585,825	0	585,825	0.0000810431	4,897
213 HARRIS COUNTY MUD 322	197,111,894	0.630000	1,241,805	0	1,241,805	0.0001717914	10,381
220 HARRIS COUNTY MUD 342	173,914,724	0.800000	1,391,318	0	1,391,318	0.0001924750	11,631
222 HARRIS COUNTY MUD 344	222,112,563	1.200000	2,665,351	0	2,665,351	0.0003687248	22,282
224 HARRIS COUNTY MUD 345	365,299,133	0.390000	1,424,667	0	1,424,667	0.0001970885	11,910
225 HARRIS COUNTY MUD 346	103,689,955	0.405000	419,944	0	419,944	0.0000580951	3,511
227 HARRIS COUNTY FWSD 27	47,948,495	0.675000	323,652	0	323,652	0.0000447741	2,706
228 HARRIS COUNTY MUD 404 (NEW)	6,060,262	0.861250	52,194	0	52,194	0.0000072205	436
229 HARRIS COUNTY MUD 412	151,866,878	1.400000	2,126,136	0	2,126,136	0.0002941298	17,774
230 HARRIS COUNTY MUD 407	82,557,370	0.750000	619,180	0	619,180	0.0000856574	5,176
231 HARRIS COUNTY MUD 405	3,112,236	1.250000	38,903	0	38,903	0.0000053818	325
234 HARRIS COUNTY MUD 451	19,910,021	0.880000	175,208	0	175,208	0.0000242383	1,465
235 HARRIS COUNTY MUD 459	6,405,200	0.800000	51,242	0	51,242	0.0000070888	428
237 HARRIS COUNTY MUD 434	3,111,000	1.250000	38,888	0	38,888	0.0000053797	325
238 HARRIS COUNTY MUD 439	9,008,698	0.800000	72,070	0	72,070	0.0000099701	602
241 HARRIS COUNTY MUD 460	22,385,920	0.690000	154,463	0	154,463	0.0000213684	1,291
242 HARRIS COUNTY MUD 450	41,984,713	0.761250	319,609	0	319,609	0.0000442147	2,672
243 HARRIS COUNTY MUD 480	13,464,177	1.500000	201,963	0	201,963	0.0000279395	1,688
246 HARRIS COUNTY MUD 432 (NEW)	10,930,530	1.500000	163,958	0	163,958	0.0000226820	1,371
247 HARRIS COUNTY FWSD 47	93,854,746	0.800000	750,838	0	750,838	0.0001038710	6,277
248 HARRIS COUNTY MUD 481	37,312,913	1.250000	466,411	0	466,411	0.0000645234	3,899
249 HARRIS COUNTY MUD 406	35,551,821	1.400000	497,725	0	497,725	0.0000688554	4,161
250 HARRIS COUNTY MUD 402	20,225,498	1.250000	252,819	0	252,819	0.0000349750	2,114
251 HARRIS COUNTY FWSD 51	391,601,607	0.320000	1,253,125	0	1,253,125	0.0001733574	10,476
253 BRAZORIA COUNTY MUD 18	153,616,437	0.550000	844,890	0	844,890	0.0001168822	7,063
254 KINGS MANOR MUD	60,568,057	0.860000	520,885	0	520,885	0.0000720593	4,355
255 HARRIS COUNTY MUD 501	9,104,928	1.500000	136,574	0	136,574	0.0000188936	1,142
257 HARRIS COUNTY MUD 500	29,262,988	1.500000	438,945	0	438,945	0.0000607237	3,669
258 HARRIS COUNTY FWSD 58	89,853,898	0.545000	489,704	0	489,704	0.0000677456	4,094
261 HARRIS COUNTY FWSD 61	701,425,729	0.410000	2,875,845	0	2,875,845	0.0003978446	24,042
264 HARRIS COUNTY ID 1	3,171,666,073	0.143500	4,551,341	0	4,551,341	0.0006296327	38,048
276 HARRIS COUNTY MUD 396	108,025,735	1.300000	1,404,335	0	1,404,335	0.0001942757	11,740
301 HARRIS COUNTY MUD 1	309,785,319	1.040000	3,221,767	0	3,221,767	0.0004456995	26,933
305 HARRIS COUNTY MUD 5	129,501,110	1.200000	1,554,013	0	1,554,013	0.0002149823	12,991
306 HARRIS COUNTY MUD 6	104,292,943	0.650000	677,904	0	677,904	0.0000937813	5,667
308 HARRIS COUNTY MUD 8	130,004,634	0.542500	705,275	0	705,275	0.0000975678	5,896
311 HARRIS COUNTY MUD 11	96,967,418	0.910000	882,403	0	882,403	0.0001220717	7,377
313 CLEAR BROOK CITY MUD	684,055,350	0.670000	4,583,171	0	4,583,171	0.0006340361	38,314
316 HARRIS COUNTY MUD 16	131,512,128	0.690000	907,434	0	907,434	0.0001255344	7,586
318 HARRIS COUNTY MUD 18	211,115,429	0.324000	684,014	0	684,014	0.0000946265	5,718

ESTIMATED 2012 COST ALLOCATION TO TAXING UNITS

TAXING UNIT	2010 TAXABLE VALUE AS OF 07/15/11	2010 TOTAL TAX RATE	2010 TOTAL LEVY	2010 FROZEN LEVY LOSS	2010 ADJ. LEVY FOR CALC.	2012 ALLOCATION RATIO	2012 BUDGET ALLOCATION
323 HARRIS COUNTY MUD 23	121,860,005	0.480000	584,928	0	584,928	0.0000809190	4,890
324 HARRIS COUNTY MUD 24	465,464,056	0.600000	2,792,784	0	2,792,784	0.0003863540	23,347
325 HARRIS COUNTY MUD 25	33,055,305	0.880000	290,887	0	290,887	0.0000402413	2,432
326 HARRIS COUNTY MUD 26	391,164,316	0.750000	2,933,732	0	2,933,732	0.0004058527	24,525
333 HARRIS COUNTY MUD 33	144,863,542	0.870000	1,260,313	0	1,260,313	0.0001743517	10,536
336 HARRIS COUNTY MUD 36	261,846,825	0.190000	497,509	0	497,509	0.0000688254	4,159
343 HARRIS COUNTY MUD 43	129,300,104	0.635000	821,056	0	821,056	0.0001135849	6,864
344 HARRIS COUNTY MUD 44	126,718,461	0.380000	481,530	0	481,530	0.0000666149	4,026
346 HARRIS COUNTY MUD 46	166,557,148	0.490000	816,130	0	816,130	0.0001129035	6,823
348 HARRIS COUNTY MUD 48	26,536,937	0.500000	132,685	0	132,685	0.0000183556	1,109
349 HARRIS COUNTY MUD 49	188,459,558	1.000000	1,884,596	0	1,884,596	0.0002607151	15,755
350 HARRIS COUNTY MUD 50	53,298,754	1.120000	596,946	0	596,946	0.0000825816	4,990
353 HARRIS COUNTY MUD 53	568,592,681	0.825000	4,690,890	0	4,690,890	0.0006489379	39,215
355 HARRIS COUNTY MUD 55	640,794,038	0.400000	2,563,176	0	2,563,176	0.0003545899	21,428
358 HARRIS COUNTY MUD 58	45,583,301	1.130000	515,091	0	515,091	0.0000712578	4,306
361 HARRIS COUNTY MUD 61	102,422,232	0.590000	604,291	0	604,291	0.0000835977	5,052
362 HARRIS COUNTY MUD 62	77,449,124	0.650000	503,419	0	503,419	0.0000696431	4,208
363 HARRIS COUNTY MUD 63	126,224,710	0.850000	1,072,910	0	1,072,910	0.0001484264	8,969
364 HARRIS COUNTY MUD 64	185,289,962	0.710000	1,315,559	0	1,315,559	0.0001819945	10,998
365 HARRIS COUNTY MUD 65	138,000,175	0.846000	1,167,481	0	1,167,481	0.0001615094	9,760
369 HARRIS COUNTY MUD 69	131,790,078	0.400000	527,160	0	527,160	0.0000729274	4,407
370 HARRIS COUNTY MUD 70	214,925,725	0.930000	1,998,809	0	1,998,809	0.0002765154	16,710
371 HARRIS COUNTY MUD 71	375,709,489	1.100000	4,132,804	0	4,132,804	0.0005717323	34,549
379 HARRIS COUNTY MUD 381	113,390,794	0.780000	884,448	0	884,448	0.0001223546	7,394
381 HARRIS COUNTY MUD 81	378,039,885	0.370000	1,398,748	0	1,398,748	0.0001935028	11,693
382 HARRIS COUNTY MUD 82	316,226,886	0.800000	2,529,815	0	2,529,815	0.0003499748	21,149
383 HARRIS COUNTY MUD 383	245,304,243	0.940000	2,305,860	0	2,305,860	0.0003189928	19,277
384 HARRIS COUNTY MUD 397	171,375,598	1.120000	1,919,407	0	1,919,407	0.0002655308	16,046
385 HARRIS COUNTY MUD 399	45,334,410	1.340000	607,481	0	607,481	0.0000840390	5,078
386 HARRIS COUNTY MUD 86	144,591,460	0.850000	1,229,027	0	1,229,027	0.0001700237	10,274
387 HARRIS COUNTY MUD 391	238,352,261	1.380000	3,289,261	0	3,289,261	0.0004550366	27,498
388 HARRIS COUNTY MUD 393	88,391,495	0.990000	875,076	0	875,076	0.0001210580	7,315
389 HARRIS COUNTY MUD 400	221,019,787	1.350000	2,983,767	0	2,983,767	0.0004127745	24,944
392 HARRIS COUNTY MUD 411	47,086,694	0.960000	452,032	0	452,032	0.0000625342	3,779
394 HARRIS COUNTY MUD 410	70,942,092	0.720000	510,783	0	510,783	0.0000706618	4,270
395 HARRIS COUNTY MUD 386	481,825,735	0.990000	4,770,075	0	4,770,075	0.0006598924	39,877
396 HARRIS COUNTY MUD 96	162,872,834	1.350000	2,198,783	0	2,198,783	0.0003041798	18,381
399 HARRIS COUNTY MUD 420	40,998,377	1.360000	557,578	0	557,578	0.0000771354	4,661
400 HARRIS COUNTY RID 1	78,525,294	0.300000	235,576	0	235,576	0.0000325896	1,969
402 HARRIS COUNTY MUD 102	358,570,943	0.585000	2,097,640	0	2,097,640	0.0002901877	17,536
404 HARRIS COUNTY MUD 104	218,796,632	0.550000	1,203,382	0	1,203,382	0.0001664759	10,060
405 HARRIS COUNTY MUD 105	201,001,605	0.930000	1,869,315	0	1,869,315	0.0002586011	15,627
406 HARRIS COUNTY MUD 106	254,042,261	0.890000	2,260,976	0	2,260,976	0.0003127836	18,901

ESTIMATED 2012 COST ALLOCATION TO TAXING UNITS

TAXING UNIT	2010 TAXABLE VALUE AS OF 07/15/11	2010 TOTAL TAX RATE	2010 TOTAL LEVY	2010 FROZEN LEVY LOSS	2010 ADJ. LEVY FOR CALC.	2012 ALLOCATION RATIO	2012 BUDGET ALLOCATION
409 HARRIS COUNTY MUD 109	412,719,537	0.520000	2,146,142	0	2,146,142	0.0002968973	17,941
418 HARRIS COUNTY MUD 118	149,788,674	0.600000	898,732	0	898,732	0.0001243306	7,513
419 HARRIS COUNTY MUD 119	176,765,552	0.460000	813,122	0	813,122	0.0001124873	6,798
420 HARRIS COUNTY MUD 120	329,768,781	0.730000	2,407,312	0	2,407,312	0.0003330277	20,125
422 HARRIS COUNTY MUD 122	59,370,862	0.870000	516,527	0	516,527	0.0000714563	4,318
427 HARRIS COUNTY MUD 127	149,917,879	0.870000	1,304,286	0	1,304,286	0.0001804349	10,904
430 HARRIS COUNTY MUD 130	320,437,924	0.700000	2,243,066	0	2,243,066	0.0003103058	18,752
432 HARRIS COUNTY MUD 132	435,195,118	0.335000	1,457,904	0	1,457,904	0.0002016865	12,188
436 HARRIS COUNTY MUD 136	188,136,767	0.215000	404,494	0	404,494	0.0000559577	3,381
444 HARRIS COUNTY MUD 144	107,966,586	0.650000	701,783	0	701,783	0.0000970847	5,867
447 HARRIS COUNTY MUD 147	87,582,020	0.880000	770,722	0	770,722	0.0001066217	6,443
448 HARRIS COUNTY MUD 148	87,434,766	1.090000	953,039	0	953,039	0.0001318435	7,967
449 HARRIS COUNTY MUD 149	124,750,266	0.660000	823,352	0	823,352	0.0001139025	6,883
450 HARRIS COUNTY MUD 150	200,799,749	0.930000	1,867,438	0	1,867,438	0.0002583414	15,611
451 HARRIS COUNTY MUD 151	409,219,849	0.460000	1,882,411	0	1,882,411	0.0002604129	15,737
452 HARRIS COUNTY MUD 152	370,518,449	0.400000	1,482,074	0	1,482,074	0.0002050302	12,390
453 HARRIS COUNTY MUD 153	468,696,263	0.440000	2,062,264	0	2,062,264	0.0002852937	17,240
454 HARRIS COUNTY MUD 154	235,723,643	0.770000	1,815,072	0	1,815,072	0.0002510972	15,174
455 HARRIS COUNTY MUD 155	97,828,530	0.850000	831,543	0	831,543	0.0001150356	6,952
456 HARRIS COUNTY MUD 156	134,752,545	1.050000	1,414,902	0	1,414,902	0.0001957376	11,828
457 HARRIS COUNTY MUD 157	390,160,005	0.820000	3,199,312	0	3,199,312	0.0004425930	26,746
458 HARRIS COUNTY MUD 158	281,335,163	0.380000	1,069,074	0	1,069,074	0.0001478957	8,937
462 HARRIS COUNTY MUD 162	127,404,968	0.560000	713,468	0	713,468	0.0000987012	5,964
465 HARRIS COUNTY MUD 165	491,193,292	1.320000	6,483,752	0	6,483,752	0.0008969626	54,203
466 HARRIS COUNTY MUD 166	126,503,322	1.000000	1,265,033	0	1,265,033	0.0001750048	10,575
467 HARRIS COUNTY MUD 167	289,269,202	1.250000	3,615,865	0	3,615,865	0.0005002190	30,228
468 HARRIS COUNTY MUD 168	340,690,730	0.595000	2,027,110	0	2,027,110	0.0002804305	16,946
470 HARRIS COUNTY MUD 170	135,637,861	0.320000	434,041	0	434,041	0.0000600453	3,629
472 HARRIS COUNTY MUD 172	201,655,957	0.890000	1,794,738	0	1,794,738	0.0002482842	15,004
473 HARRIS COUNTY MUD 173	257,936,771	0.700000	1,805,557	0	1,805,557	0.0002497809	15,094
479 HARRIS COUNTY MUD 179	118,038,873	0.300000	354,117	0	354,117	0.0000489885	2,960
480 HARRIS COUNTY MUD 180	155,794,671	0.900000	1,402,152	0	1,402,152	0.0001939738	11,722
482 HARRIS COUNTY MUD 182	52,354,464	1.210000	633,489	0	633,489	0.0000876369	5,296
483 HARRIS COUNTY MUD 183	159,326,761	0.540000	860,364	0	860,364	0.0001190229	7,192
484 HARRIS COUNTY MUD 382	87,252,396	0.690000	602,042	0	602,042	0.0000832865	5,033
485 HARRIS COUNTY MUD 185	67,534,261	0.500000	337,671	0	337,671	0.0000467135	2,823
486 HARRIS COUNTY MUD 186	221,109,277	0.430000	950,770	0	950,770	0.0001315296	7,948
488 HARRIS COUNTY MUD 188	266,202,556	0.700000	1,863,418	0	1,863,418	0.0002577853	15,578
489 HARRIS COUNTY MUD 189	137,068,997	0.700000	959,483	0	959,483	0.0001327349	8,021
490 HARRIS COUNTY MUD 390	156,571,604	0.700000	1,096,001	0	1,096,001	0.0001516209	9,162
491 HARRIS COUNTY MUD 191	278,545,445	0.300000	835,636	0	835,636	0.0001156020	6,986
493 HARRIS COUNTY MUD 389	74,518,262	1.350000	1,005,997	0	1,005,997	0.0001391696	8,410
496 HARRIS COUNTY MUD 196	272,324,374	0.710000	1,933,503	0	1,933,503	0.0002674809	16,164

ESTIMATED 2012 COST ALLOCATION TO TAXING UNITS

TAXING UNIT	2010 TAXABLE VALUE AS OF 07/15/11	2010 TOTAL TAX RATE	2010 TOTAL LEVY	2010 FROZEN LEVY LOSS	2010 ADJ. LEVY FOR CALC.	2012 ALLOCATION RATIO	2012 BUDGET ALLOCATION
500 HARRIS COUNTY MUD 200	191,680,690	0.550000	1,054,244	0	1,054,244	0.0001458442	8,813
501 HARRIS COUNTY MUD 374	242,962,687	0.950000	2,308,146	0	2,308,146	0.0003193090	19,296
502 HARRIS COUNTY MUD 202	118,436,484	1.250000	1,480,456	0	1,480,456	0.0002048064	12,376
504 HARRIS COUNTY MUD 371	221,509,783	0.910000	2,015,739	0	2,015,739	0.0002788574	16,851
505 HARRIS COUNTY MUD 205	31,824,436	1.170000	372,346	0	372,346	0.0000515104	3,113
506 HARRIS COUNTY MUD 419	295,102,627	1.000000	2,951,026	0	2,951,026	0.0004082451	24,670
507 HARRIS COUNTY MUD 468	195,905,957	0.850000	1,665,201	0	1,665,201	0.0002303640	13,921
508 HARRIS COUNTY MUD 208	181,277,576	0.600000	1,087,665	0	1,087,665	0.0001504677	9,093
509 HARRIS COUNTY MUD 372	673,414,759	0.190000	1,279,488	0	1,279,488	0.0001770045	10,696
510 HARRIS COUNTY MUD 373	135,582,797	0.355000	481,319	0	481,319	0.0000665857	4,024
511 HARRIS COUNTY MUD 211	76,479,384	0.550000	420,637	0	420,637	0.0000581909	3,516
514 HARRIS COUNTY MUD 220	55,741,439	1.300000	724,639	0	724,639	0.0001002466	6,058
515 HARRIS COUNTY MUD 215	30,950,846	1.350000	417,836	0	417,836	0.0000578035	3,493
516 HARRIS COUNTY MUD 216	100,715,508	1.160000	1,168,300	0	1,168,300	0.0001616227	9,767
517 HARRIS COUNTY MUD 217	76,694,898	1.391700	1,067,363	0	1,067,363	0.0001476590	8,923
519 HARRIS COUNTY MUD 341	270,359,112	0.460000	1,243,652	0	1,243,652	0.0001720469	10,397
520 HARRIS COUNTY MUD 370	525,852,146	0.480000	2,524,090	0	2,524,090	0.0003491828	21,101
521 HARRIS COUNTY MUD 221	233,795,043	0.495000	1,157,285	0	1,157,285	0.0001600989	9,675
522 HARRIS COUNTY MUD 222	258,649,929	0.580000	1,500,170	0	1,500,170	0.0002075336	12,541
524 HARRIS COUNTY MUD 354	409,140,864	0.645000	2,638,958	0	2,638,958	0.0003650737	22,061
525 HARRIS COUNTY MUD 355	438,322,502	0.255000	1,117,722	0	1,117,722	0.0001546258	9,344
526 HARRIS COUNTY MUD 367	467,646,001	0.740000	3,460,580	0	3,460,580	0.0004787369	28,930
527 HARRIS COUNTY MUD 359	230,278,704	0.305000	702,350	0	702,350	0.0000971632	5,872
528 HARRIS COUNTY MUD 358	126,324,962	0.810000	1,023,232	0	1,023,232	0.0001415540	8,554
529 HARRIS COUNTY MUD 360	360,042,078	0.390000	1,404,164	0	1,404,164	0.0001942521	11,739
530 HARRIS COUNTY MUD 230	327,718,806	0.580000	1,900,769	0	1,900,769	0.0002629525	15,890
532 HARRIS COUNTY MUD 361	172,861,521	1.050000	1,815,046	0	1,815,046	0.0002510935	15,173
533 HARRIS COUNTY MUD 233	104,890,276	0.750000	786,677	0	786,677	0.0001088290	6,576
534 HARRIS COUNTY MUD 364	430,243,212	0.530000	2,280,289	0	2,280,289	0.0003154553	19,063
535 HARRIS COUNTY MUD 365	365,952,907	0.520000	1,902,955	0	1,902,955	0.0002632549	15,908
538 HARRIS COUNTY MUD 238	317,163,559	0.720000	2,283,578	0	2,283,578	0.0003159103	19,090
539 HARRIS COUNTY MUD 239	197,663,222	0.760000	1,502,241	0	1,502,241	0.0002078200	12,558
541 HARRIS COUNTY MUD 257	147,232,326	0.400000	588,929	0	588,929	0.0000814725	4,923
542 HARRIS COUNTY MUD 261	102,809,186	0.570000	586,012	0	586,012	0.0000810690	4,899
544 HARRIS COUNTY MUD 280	159,101,844	0.705000	1,121,668	0	1,121,668	0.0001551716	9,377
545 HARRIS COUNTY MUD 281	146,307,247	1.050000	1,536,226	0	1,536,226	0.0002125216	12,843
548 HARRIS COUNTY MUD 248	275,202,065	0.750000	2,064,015	0	2,064,015	0.0002855360	17,255
549 HARRIS COUNTY MUD 249	176,638,095	1.110000	1,960,683	0	1,960,683	0.0002712410	16,391
550 HARRIS COUNTY ESD 7	6,212,099,496	0.080000	4,969,679	0	4,969,679	0.0006875057	41,546
555 HARRIS COUNTY MUD 366	191,406,606	0.250000	478,517	0	478,517	0.0000661980	4,000
556 HARRIS COUNTY UD 6	323,207,662	0.240000	775,698	0	775,698	0.0001073102	6,485
564 HARRIS COUNTY UD 14	157,892,704	0.889000	1,403,666	0	1,403,666	0.0001941833	11,734
565 HARRIS COUNTY UD 15	109,793,554	0.930000	1,021,080	0	1,021,080	0.0001412563	8,536

ESTIMATED 2012 COST ALLOCATION TO TAXING UNITS

TAXING UNIT	2010 TAXABLE VALUE AS OF 07/15/11	2010 TOTAL TAX RATE	2010 TOTAL LEVY	2010 FROZEN LEVY LOSS	2010 ADJ. LEVY FOR CALC.	2012 ALLOCATION RATIO	2012 BUDGET ALLOCATION
566 HARRIS COUNTY UD 16	97,850,699	1.500000	1,467,760	0	1,467,760	0.0002030501	12,270
600 HARRIS COUNTY WCID - FONDREN RD	73,277,614	0.540000	395,699	0	395,699	0.0000547410	3,308
601 HARRIS COUNTY WCID 1	213,575,664	0.250000	533,939	0	533,939	0.0000738652	4,464
602 HARRIS COUNTY WCID 21	333,312,970	0.366000	1,219,925	0	1,219,925	0.0001687646	10,198
603 HARRIS COUNTY WCID 36	232,117,843	0.290000	673,142	0	673,142	0.0000931225	5,627
604 HARRIS COUNTY WCID 50	198,360,654	0.182890	362,782	0	362,782	0.0000501873	3,033
605 HARRIS COUNTY WCID 70	72,457,545	0.802000	581,110	0	581,110	0.0000803907	4,858
606 HARRIS COUNTY WCID 74	103,406,534	1.046000	1,081,632	0	1,081,632	0.0001496331	9,042
607 HARRIS COUNTY WCID 75	51,980,989	0.550000	285,895	0	285,895	0.0000395508	2,390
609 HARRIS COUNTY WCID 84	93,451,868	1.087000	1,015,822	0	1,015,822	0.0001405288	8,492
610 HARRIS COUNTY WCID 89	221,623,410	1.390000	3,080,565	0	3,080,565	0.0004261656	25,753
611 HARRIS COUNTY WCID 91	104,600,975	0.360000	376,564	0	376,564	0.0000520938	3,148
612 HARRIS COUNTY WCID 92	163,050,808	0.150000	244,576	0	244,576	0.0000338347	2,045
613 HARRIS COUNTY WCID 96	545,395,812	0.970000	5,290,340	0	5,290,340	0.0007318659	44,226
614 HARRIS COUNTY WCID 155	873,537,386	0.215000	1,878,105	0	1,878,105	0.0002598172	15,701
616 HARRIS COUNTY WCID 156	153,250,957	0.395000	605,341	0	605,341	0.0000837429	5,061
617 HARRIS COUNTY WCID 157	313,863,227	0.500000	1,569,316	0	1,569,316	0.0002170993	13,119
622 HARRIS COUNTY WCID 109	429,543,776	0.250000	1,073,859	0	1,073,859	0.0001485578	8,977
623 HARRIS COUNTY WCID 110	470,886,999	0.550000	2,589,879	0	2,589,879	0.0003582839	21,651
624 HARRIS COUNTY WCID 113	61,477,891	0.891000	547,768	0	547,768	0.0000757783	4,579
625 HARRIS COUNTY WCID 114	343,445,508	0.300000	1,030,337	0	1,030,337	0.0001425368	8,613
626 HARRIS COUNTY WCID 116	245,690,327	0.100000	245,690	0	245,690	0.0000339888	2,054
627 HARRIS COUNTY WCID 119	385,786,442	0.550000	2,121,825	0	2,121,825	0.0002935335	17,738
628 HARRIS COUNTY WCID 132	103,740,918	0.350000	363,093	0	363,093	0.0000502303	3,035
629 HARRIS COUNTY WCID 133	103,668,697	0.990000	1,026,320	0	1,026,320	0.0001419812	8,580
630 HARRIS COUNTY WCID 136	75,457,883	0.490000	369,744	0	369,744	0.0000511504	3,091
631 HARRIS COUNTY ESD 46	3,638,041,950	0.080000	2,910,433	0	2,910,433	0.0004026295	24,331
632 HARRIS COUNTY WCID 145	919,440,971	0.059800	549,826	0	549,826	0.0000760629	4,596
633 HARRIS COUNTY ESD 9	25,366,844,545	0.060000	15,220,106	0	15,220,106	0.0021055503	127,237
634 HARRIS COUNTY ESD 13	4,899,556,201	0.050000	2,449,778	0	2,449,778	0.0003389024	20,480
635 HARRIS COUNTY ESD 16	9,252,022,193	0.050000	4,626,011	0	4,626,011	0.0006399626	38,673
636 HARRIS COUNTY ESD 20	2,827,382,553	0.082400	2,329,763	0	2,329,763	0.0003222996	19,476
637 HARRIS COUNTY ESD 28	2,327,777,387	0.100000	2,327,777	0	2,327,777	0.0003220249	19,460
638 HARRIS COUNTY ESD 47	1,964,374,850	0.100000	1,964,375	0	1,964,375	0.0002717517	16,422
639 HARRIS COUNTY ESD 24	3,084,477,731	0.091940	2,835,869	0	2,835,869	0.0003923143	23,707
640 HARRIS COUNTY ESD 14	435,365,121	0.050000	217,683	0	217,683	0.0000301142	1,820
641 HARRIS COUNTY ESD 10	2,016,989,472	0.100000	2,016,990	0	2,016,990	0.0002790304	16,862
642 HARRIS COUNTY ESD 25	1,232,722,470	0.100000	1,232,722	0	1,232,722	0.0001705349	10,305
643 HARRIS COUNTY ESD 48	5,889,728,492	0.083800	4,935,593	0	4,935,593	0.0006827902	41,261
645 HARRIS COUNTY ESD 29	2,175,453,807	0.076100	1,655,520	0	1,655,520	0.0002290248	13,840
647 HARRIS COUNTY ESD 17	2,836,270,078	0.100000	2,836,270	0	2,836,270	0.0003923698	23,711
648 HARRIS COUNTY ESD 21	1,009,172,152	0.049500	499,540	0	499,540	0.0000691064	4,176
649 HARRIS COUNTY ESD 19	321,614,186	0.030000	96,484	0	96,484	0.0000133476	807

ESTIMATED 2012 COST ALLOCATION TO TAXING UNITS

TAXING UNIT	2010 TAXABLE VALUE AS OF 07/15/11	2010 TOTAL TAX RATE	2010 TOTAL LEVY	2010 FROZEN LEVY LOSS	2010 ADJ. LEVY FOR CALC.	2012 ALLOCATION RATIO	2012 BUDGET ALLOCATION
650 HARRIS-FORT BEND CO MUD 1	31,284,969	0.750000	234,637	0	234,637	0.0000324597	1,962
651 HEATHERLOCH MUD	178,421,709	0.375000	669,081	0	669,081	0.0000925608	5,593
652 HORSEPEN BAYOU MUD	353,961,333	0.750000	2,654,710	0	2,654,710	0.0003672527	22,193
654 HUNTER'S GLEN MUD	194,576,730	0.855000	1,663,631	0	1,663,631	0.0002301468	13,908
656 INTERSTATE MUD	339,805,577	0.435000	1,478,154	0	1,478,154	0.0002044879	12,357
657 INVERNESS FOREST ID	75,304,292	0.490000	368,991	0	368,991	0.0000510462	3,085
658 JACKRABBIT ROAD PUD	212,349,480	0.345000	732,606	0	732,606	0.0001013487	6,124
660 HARRIS-FORT BEND COUNTIES MUD 3	109,713,469	1.250000	1,371,418	0	1,371,418	0.0001897221	11,465
662 FORT BEND COUNTY MUD 30	57,281	0.975000	558	0	558	0.0000000773	5
665 HARRIS COUNTY ESD 15	426,012,070	0.030000	127,804	0	127,804	0.0000176804	1,068
666 HARRIS COUNTY ESD 11	27,591,551,030	0.030000	8,277,465	0	8,277,465	0.0011451050	69,198
667 HARRIS COUNTY ESD 50	3,128,686,513	0.050000	1,564,343	0	1,564,343	0.0002164113	13,078
668 HARRIS COUNTY ESD 12	2,199,092,682	0.025000	549,773	0	549,773	0.0000760557	4,596
669 HARRIS COUNTY ESD 80	1,329,665,789	0.042990	571,623	0	571,623	0.0000790784	4,779
670 HARRIS COUNTY ESD 60	3,768,676,427	0.050000	1,884,338	0	1,884,338	0.0002606795	15,753
671 HARRIS COUNTY ESD 1	8,102,810,534	0.100000	8,102,811	0	8,102,811	0.0011209433	67,738
672 HARRIS COUNTY ESD 2	3,784,650,933	0.030000	1,135,395	0	1,135,395	0.0001570706	9,492
673 HARRIS COUNTY ESD 3	1,012,094,211	0.030000	303,628	0	303,628	0.0000420040	2,538
674 HARRIS COUNTY ESD 4	683,034,647	0.100000	683,035	0	683,035	0.0000944911	5,710
675 HARRIS COUNTY ESD 5	1,192,794,028	0.028870	344,360	0	344,360	0.0000476387	2,879
676 HARRIS COUNTY ESD 6	2,230,403,174	0.010000	223,040	0	223,040	0.0000308554	1,865
677 HARRIS-FORT BEND ESD 100	1,999,658,679	0.090000	1,799,693	0	1,799,693	0.0002489696	15,045
678 WALLER-HARRIS ESD 200	541,673,480	0.094400	511,340	0	511,340	0.0000707388	4,275
679 HARRIS COUNTY ESD 8	1,313,734,048	0.050000	656,867	0	656,867	0.0000908710	5,491
681 KINGSBRIDGE MUD	12,144,722	0.780000	94,729	0	94,729	0.0000131048	792
682 KIRK MONT MUD	81,393,663	0.467000	380,108	0	380,108	0.0000525842	3,178
683 KLEIN PUD	186,300,525	0.428000	797,366	0	797,366	0.0001103077	6,666
684 KLEINWOOD MUD	257,434,423	0.630000	1,621,837	0	1,621,837	0.0002243650	13,558
691 LAKE MUD	134,940,998	0.670000	904,105	0	904,105	0.0001250739	7,558
692 LAKE FOREST UD	231,597,844	0.250000	578,995	0	578,995	0.0000800982	4,840
693 LANGHAM CREEK UD	344,838,041	0.680000	2,344,899	0	2,344,899	0.0003243934	19,603
694 LONGHORN TOWN UD	170,055,467	0.650000	1,105,360	0	1,105,360	0.0001529156	9,241
695 LOUETTA NORTH PUD	268,653,059	0.420000	1,128,343	0	1,128,343	0.0001560950	9,433
696 LOUETTA ROAD UD	82,220,684	0.490000	402,881	0	402,881	0.0000557346	3,368
697 LUCE BAYOU PUD	30,839,615	1.080000	333,068	0	333,068	0.0000460766	2,784
701 MALCOMSON ROAD UD	439,060,578	0.530000	2,327,021	0	2,327,021	0.0003219202	19,453
702 MASON CREEK UD	399,063,072	0.346000	1,380,758	0	1,380,758	0.0001910142	11,543
703 BRAZORIA COUNTY MUD 28	201,917	0.820000	1,656	0	1,656	0.0000002291	14
704 MAYDE CREEK MUD	175,502,380	0.896000	1,572,501	0	1,572,501	0.0002175399	13,146
705 MEMORIAL HILLS UD	70,361,387	1.010000	710,650	0	710,650	0.0000983114	5,941
706 MEMORIAL MUD	314,598,980	0.555000	1,746,024	0	1,746,024	0.0002415451	14,596
707 MEMORIAL VILLAGES WA	3,434,128,851	0.038240	1,313,211	0	1,313,211	0.0001816697	10,978
709 MILLS ROAD MUD	182,117,375	0.880000	1,602,633	0	1,602,633	0.0002217083	13,398

ESTIMATED 2012 COST ALLOCATION TO TAXING UNITS

TAXING UNIT	2010 TAXABLE VALUE AS OF 07/15/11	2010 TOTAL TAX RATE	2010 TOTAL LEVY	2010 FROZEN LEVY LOSS	2010 ADJ. LEVY FOR CALC.	2012 ALLOCATION RATIO	2012 BUDGET ALLOCATION
710 MISSION BEND MUD 1	125,989,805	0.250000	314,975	0	314,975	0.0000435736	2,633
711 MISSION BEND MUD 2	260,822,867	0.850000	2,216,994	0	2,216,994	0.0003066991	18,534
712 MORTON ROAD MUD	114,730,717	0.820000	940,792	0	940,792	0.0001301492	7,865
714 MOUNT HOUSTON ROAD MUD	122,150,633	1.300000	1,587,958	0	1,587,958	0.0002196782	13,275
718 NEWPORT MUD	363,697,446	0.640000	2,327,664	0	2,327,664	0.0003220091	19,459
721 NORTHHAMPTON MUD	338,790,684	0.610000	2,066,623	0	2,066,623	0.0002858968	17,277
722 NORTHBELT UD	255,582,741	0.500000	1,277,914	0	1,277,914	0.0001767867	10,683
724 NORTHEAST HARRIS COUNTY MUD 1	27,645,387	1.480000	409,152	0	409,152	0.0000566021	3,420
726 NORTH GREEN MUD	177,118,010	0.350000	619,913	0	619,913	0.0000857588	5,182
727 NORTH MISSION GLEN MUD	3,268,449	0.571100	18,666	0	18,666	0.0000025823	156
728 NORTH PARK PUD	148,042,013	0.460000	680,993	0	680,993	0.0000942087	5,693
730 NORTHWEST FREEWAY MUD	61,200,594	1.200000	734,407	0	734,407	0.0001015979	6,140
731 NORTHGATE CROSSING MUD 1	63,874,074	1.325000	846,332	0	846,332	0.0001170816	7,075
732 NORTHGATE CROSSING MUD 2	187,341,930	1.026000	1,922,128	0	1,922,128	0.0002659073	16,069
734 NORTHGATE CROSSING ROAD UD	247,214,611	0.234000	578,482	0	578,482	0.0000800273	4,836
745 NORTHWEST HARRIS COUNTY MUD 5	899,707,119	0.800000	7,197,657	0	7,197,657	0.0009957242	60,171
746 NORTHWEST HARRIS COUNTY MUD 6	187,635,045	0.390000	731,777	0	731,777	0.0001012340	6,118
749 NORTHWEST HARRIS COUNTY MUD 9	269,620,540	0.600000	1,617,723	0	1,617,723	0.0002237959	13,524
750 NORTHWEST HARRIS COUNTY MUD 10	341,003,377	0.870000	2,966,729	0	2,966,729	0.0004104175	24,801
752 NORTHWEST HARRIS COUNTY MUD 12	80,408,368	1.010000	812,125	0	812,125	0.0001123494	6,789
755 NORTHWEST HARRIS COUNTY MUD 15	189,403,497	0.830000	1,572,049	0	1,572,049	0.0002174774	13,142
756 NORTHWEST HARRIS COUNTY MUD 16	110,407,861	1.200000	1,324,894	0	1,324,894	0.0001832860	11,076
759 NORTHWEST HARRIS COUNTY MUD 19	226,468,123	1.090000	2,468,503	0	2,468,503	0.0003414928	20,636
760 NORTHWEST HARRIS COUNTY MUD 20	183,593,843	0.490000	899,610	0	899,610	0.0001244521	7,521
761 NORTHWEST HARRIS COUNTY MUD 21	110,045,599	0.300000	330,137	0	330,137	0.0000456711	2,760
762 NORTHWEST HARRIS COUNTY MUD 22	142,688,360	0.850000	1,212,851	0	1,212,851	0.0001677859	10,139
763 NORTHWEST HARRIS COUNTY MUD 23	96,452,623	0.860000	829,493	0	829,493	0.0001147521	6,934
764 NORTHWEST HARRIS COUNTY MUD 24	287,991,464	0.880000	2,534,325	0	2,534,325	0.0003505986	21,186
768 NORTHWEST HARRIS COUNTY MUD 28	92,400,947	0.680000	628,326	0	628,326	0.0000869227	5,253
769 NORTHWEST HARRIS COUNTY MUD 29	233,771,616	0.470000	1,098,727	0	1,098,727	0.0001519979	9,185
770 NORTHWEST HARRIS COUNTY MUD 30	252,092,102	0.800000	2,016,737	0	2,016,737	0.0002789955	16,860
771 NORTHWEST HARRIS COUNTY MUD 32	259,097,345	0.910000	2,357,786	0	2,357,786	0.0003261762	19,711
776 NORTHWEST HARRIS COUNTY MUD 36	157,647,040	0.830000	1,308,470	0	1,308,470	0.0001810139	10,939
777 NORTHWEST PARK CONSOLIDATED MUD	530,203,679	0.500000	2,651,018	0	2,651,018	0.0003667420	22,162
778 NOTTINGHAM COUNTRY MUD	686,029,147	0.395000	2,709,815	0	2,709,815	0.0003748760	22,654
779 NORTHWOOD MUD 1	9,965,355	1.250000	124,567	0	124,567	0.0000172326	1,041
781 OAKMONT PUD	161,938,354	1.250000	2,024,229	0	2,024,229	0.0002800320	16,922
783 PARKWAY UD	172,629,324	0.850000	1,467,349	0	1,467,349	0.0002029932	12,267
784 PINE BOUGH PUD	2,010,712	0.900000	18,096	0	18,096	0.0000025035	151
786 RANKIN ROAD WEST MUD	76,832,711	1.280000	983,459	0	983,459	0.0001360517	8,222
787 PINE VILLAGE PUD	24,646,596	2.450000	603,842	0	603,842	0.0000835355	5,048
788 PONDEROSA FOREST UD	237,912,159	0.100000	237,912	0	237,912	0.0000329128	1,989
789 POSTWOOD MUD	95,058,217	0.680000	646,396	0	646,396	0.0000894224	5,404

ESTIMATED 2012 COST ALLOCATION TO TAXING UNITS

TAXING UNIT	2010 TAXABLE VALUE AS OF 07/15/11	2010 TOTAL TAX RATE	2010 TOTAL LEVY	2010 FROZEN LEVY LOSS	2010 ADJ. LEVY FOR CALC.	2012 ALLOCATION RATIO	2012 BUDGET ALLOCATION
790 PRESTONWOOD FOREST UD	166,349,213	0.350000	582,222	0	582,222	0.0000805447	4,867
801 REID ROAD MUD 1	209,398,231	0.570000	1,193,570	0	1,193,570	0.0001651185	9,978
802 REID ROAD MUD 2	255,908,501	0.400000	1,023,634	0	1,023,634	0.0001416096	8,557
803 RENN ROAD MUD	102,240,886	0.665000	679,902	0	679,902	0.0000940577	5,684
804 RICEWOOD MUD	241,285,257	0.580000	1,399,455	0	1,399,455	0.0001936006	11,699
806 ROLLING CREEK UD	121,406,211	0.980000	1,189,781	0	1,189,781	0.0001645944	9,946
807 ROLLING FORK PUD	112,654,148	0.400000	450,617	0	450,617	0.0000623383	3,767
809 ROYALWOOD MUD	25,356,401	0.368830	93,522	0	93,522	0.0000129378	782
810 RICHEY ROAD MUD	181,949,076	0.250000	454,873	0	454,873	0.0000629271	3,803
811 REMINGTON MUD 1	780,849,990	0.630000	4,919,355	0	4,919,355	0.0006805438	41,125
822 SAGEMEADOW UD	198,576,839	0.379000	752,606	0	752,606	0.0001041156	6,292
823 SEQUOIA UD	44,263,678	0.250000	110,659	0	110,659	0.0000153086	925
824 SHASLA PUD	67,933,974	0.968000	657,601	0	657,601	0.0000909725	5,497
825 SOUTHWEST HARRIS COUNTY MUD 1	47,477,914	0.710000	337,093	0	337,093	0.0000466335	2,818
826 SPANISH COVE PUD	17,637,267	0.800000	141,098	0	141,098	0.0000195195	1,180
827 SPENCER ROAD PUD	271,256,773	0.500000	1,356,284	0	1,356,284	0.0001876284	11,338
829 SPRING CREEK FOREST PUD	153,539,730	0.495000	760,022	0	760,022	0.0001051414	6,354
831 SPRING MEADOWS MUD	133,937,993	1.210000	1,620,650	0	1,620,650	0.0002242008	13,548
832 SPRING WEST MUD	141,736,216	1.060000	1,502,404	0	1,502,404	0.0002078426	12,560
833 SHELDON ROAD MUD	110,890,442	0.980000	1,086,726	0	1,086,726	0.0001503378	9,085
841 TATTOR ROAD MUD	137,396,089	0.600000	824,377	0	824,377	0.0001140443	6,892
842 TERRANOVA WEST MUD	160,495,283	0.690000	1,107,417	0	1,107,417	0.0001532002	9,258
844 HARRIS COUNTY MUD 368	432,824,462	0.930000	4,025,268	0	4,025,268	0.0005568557	33,650
846 TIMBERLAKE ID	117,317,109	0.540000	633,512	0	633,512	0.0000876401	5,296
847 TIMBER LANE UD	409,614,532	0.910000	3,727,492	0	3,727,492	0.0005156615	31,161
848 TRAIL OF THE LAKES MUD	305,541,571	0.700000	2,138,791	0	2,138,791	0.0002958805	17,880
850 HARRIS COUNTY ID 3	1,419,865,463	0.150000	2,129,798	0	2,129,798	0.0002946364	17,805
851 WESTADOR MUD	230,472,223	0.165000	380,279	0	380,279	0.0000526078	3,179
861 WEST HARRIS COUNTY MUD 1	271,191,258	0.450000	1,220,361	0	1,220,361	0.0001688248	10,202
862 WEST HARRIS COUNTY MUD 2	128,214,450	0.460000	589,786	0	589,786	0.0000815911	4,931
864 WEST HARRIS COUNTY MUD 4	62,835,031	1.050000	659,768	0	659,768	0.0000912723	5,516
865 WEST HARRIS COUNTY MUD 5	57,489,216	1.200000	689,871	0	689,871	0.0000954367	5,767
866 WEST HARRIS COUNTY MUD 6	113,158,527	0.720000	814,741	0	814,741	0.0001127114	6,811
867 WEST HARRIS COUNTY MUD 7	139,178,829	0.900000	1,252,609	0	1,252,609	0.0001732861	10,472
869 WEST HARRIS COUNTY MUD 9	201,857,882	0.650000	1,312,076	0	1,312,076	0.0001815127	10,969
870 WEST HARRIS COUNTY MUD 10	299,122,119	0.650000	1,944,294	0	1,944,294	0.0002689737	16,254
871 WEST HARRIS COUNTY MUD 11	562,004,684	0.730000	4,102,634	0	4,102,634	0.0005675587	34,297
874 WEST HARRIS COUNTY MUD 14	151,903,200	0.660000	1,002,561	0	1,002,561	0.0001386944	8,381
875 WEST HARRIS COUNTY MUD 15	266,367,294	0.290000	772,465	0	772,465	0.0001068629	6,458
876 WEST HARRIS COUNTY MUD 16	20,034,369	0.500000	100,172	0	100,172	0.0000138578	837
877 WEST HARRIS COUNTY MUD 17	85,169,921	1.010000	860,216	0	860,216	0.0001190024	7,191
879 WEST HARRIS COUNTY MUD 21	122,936,558	1.150000	1,413,770	0	1,413,770	0.0001955811	11,819
893 W KEEGANS BAYOU ID	105,173,211	0.111000	116,742	0	116,742	0.0000161501	976

ESTIMATED 2012 COST ALLOCATION TO TAXING UNITS

TAXING UNIT	2010 TAXABLE VALUE AS OF 07/15/11	2010 TOTAL TAX RATE	2010 TOTAL LEVY	2010 FROZEN LEVY LOSS	2010 ADJ. LEVY FOR CALC.	2012 ALLOCATION RATIO	2012 BUDGET ALLOCATION
894 WESTLAKE MUD 1	148,217,999	0.600000	889,308	0	889,308	0.0001230269	7,434
895 WEST MEMORIAL MUD	186,233,200	0.450000	838,049	0	838,049	0.0001159358	7,006
896 WESTON MUD	325,283,440	0.620000	2,016,757	0	2,016,757	0.0002789983	16,860
897 WESTPARK MUD	145,465,952	0.650000	945,529	0	945,529	0.0001308045	7,904
899 WHITE OAK BEND MUD	55,779,360	1.010000	563,372	0	563,372	0.0000779369	4,710
901 WINDFERN FOREST UD	257,969,509	0.430000	1,109,269	0	1,109,269	0.0001534563	9,273
902 WOODCREEK MUD	121,621,254	0.600000	729,728	0	729,728	0.0001009506	6,100
907 NORTHPOINTE WATER CID	465,962,429	0.395000	1,840,552	0	1,840,552	0.0002546220	15,387
910 HARRIS-FORT BEND COUNTIES MUD 4	71,059,953	0.950000	675,070	0	675,070	0.0000933892	5,643
911 CINCO MUD 3	19,795,922	0.470000	93,041	0	93,041	0.0000128713	778
913 CINCO MUD 6	79,971,651	0.480000	383,864	0	383,864	0.0000531038	3,209
914 CINCO MUD 9	116,733,259	0.595000	694,563	0	694,563	0.0000960859	5,806
915 HARRIS-FORT BEND COUNTIES MUD 5	7,118,777	0.730000	51,967	0	51,967	0.0000071891	434
916 FT BEND WCID 2	22,722,078	0.180000	40,900	0	40,900	0.0000056581	342
917 WILLOW FORK DRNG DIST	217,462,926	0.190000	413,180	0	413,180	0.0000571593	3,454
488 TOTALS	\$2,261,855,946,428		\$7,315,507,849	\$86,943,336	\$7,228,564,513	1.0000000000	\$60,429,426