



***HARRIS COUNTY
APPRAISAL DISTRICT
HARRIS COUNTY
HOUSTON, TEXAS***

2014 BUDGET

August 2013

2014 BUDGET INTRODUCTION & HIGHLIGHTS

The 2014 adopted budget increases approximately \$4.2 million or 6.5%. The primary source of funding, taxing unit contributions increases \$2.8 million or 4.5%. The balance of funding is provided from a restricted reserve of \$1.4 million for future litigation.

This budget reflects a reorganization recommended by the newly appointed chief appraiser. The upper organization of the district has been streamlined, going from 5 departments to 3 and eliminating a middle management layer in the appraisal function. 16 positions have been added, which restores staffing to 2008 levels at 639 employees, replacing positions lost as the district cut its budget in prior years and adding badly needed additional staff for our information technology functions.

The budget provides enhanced funding for human resources, professional training, and internal auditing functions. All of these have suffered due to budget constraints in the last four years. 43 positions have been reclassified to reflect changed responsibilities at a total cost of \$151,958. 15 other positions change title with no salary increase.

Funding for supervisory training has been increased from \$25,000 to \$50,000. \$150,000 has been included for acquisition of new field devices and other computer hardware. A modest 5% increase for group health insurance rates (per employee) has been projected. The allowance to fund the district's career development program, which provides incentives for our licensed staff to seek advanced designations, is set at \$50,000. This amount provides one time payments for new designations and recurring payments for holders of advanced designations.

A new career ladder program designed to reduce turnover during the years in which a new appraiser goes through the state licensing program has been added. This is funded entirely from salary lapse and position turnover. Funds for Quality Service and Merit Salary increases and incentives have increased to \$600,000 and a two percent cost of living increase is included for all staff.

Harris County's real estate market is roaring back after several years in the doldrums. With an increasing market comes more new construction to inspect, more subdivisions and deed transactions to record, more applications for homestead and other exemptions, more protests, and more litigation. We have a highly technical workforce. More than half of our workers hold professional licenses and have skills that are highly marketable as our local real estate economy improves. With economic recovery continuing, it is critical for HCAD to adequately compensate and retain these highly qualified employees. If we do not, the result will be less accurate appraisals, slower turnaround in handling property owner complaints and transactions, and delays in certification of appraisal rolls and problem accounts. The 2% cost of living pay increase simply keeps pace with inflation. The included funds for better training, recognition of exceptional performance, and retention in an appraiser's early years are all essential to maintain the level of service expected.

RESOLUTION NO. 2013-02

**A RESOLUTION OF THE BOARD OF DIRECTORS OF THE HARRIS
COUNTY APPRAISAL DISTRICT APPROVING AND ADOPTING THE
2014 BUDGET OF SAID DISTRICT**

* * * *

WHEREAS, pursuant to the provisions of the Texas Property Tax code, a proposed budget for the Harris County Appraisal District for the year 2014 has heretofore been prepared by the chief appraiser of the district and timely submitted by him to the Board of Directors of such district and to the governing bodies of each taxing unit within such district; and

WHEREAS, following timely notice in writing furnished to the presiding officer of the governing body of each such taxing unit and published in a newspaper of general circulation in Harris County, Texas, in accordance with Section 6.062 of the Texas Property Tax Code, the Board of Directors of said district did on the 21th day of August, 2013, conduct a public hearing on such proposed budget; and

WHEREAS, at such public hearing any and all persons desiring to be heard on any matter relating to said proposed budget were heard and their comments and suggestions were duly noted and considered by the Board of Directors of said district; and

WHEREAS, the Board of Directors of the district now deems it necessary and appropriate to formally approve and adopt at this time the 2014 budget of the Harris County Appraisal District; now, therefore

**BE IT RESOLVED BY THE BOARD OF DIRECTORS OF THE HARRIS COUNTY
APPRAISAL DISTRICT:**

Section 1. That the facts and recitations set forth in the preamble of this Resolution be, and they are hereby, found to be true and correct and that they be, and they are hereby, adopted, ratified, and confirmed.

Section 2. That the proposed budget for the Harris County Appraisal District for the year 2014 as heretofore submitted to and considered by the Board of Directors of such district and as heretofore modified or changed by such Board of Directors of such district during its deliberations on such budget following the public hearing thereon, in the total amount of

\$68,676,380 (of which total sum it is anticipated that \$2,000,000 will be contributed from such district's general fund balance, that \$300,000 will be contributed from such district's internal service fund balance, that \$1,378,967 will be contributed from such district's general fund balance previously restricted for litigation expense, that \$30,000 will be interest earned, that \$600,000 will be from other income, and that the remaining \$64,367,413 will be paid to the district by the various taxing units participating in the district according to their respective proportionate shares calculated pursuant to the formula established by Section 6.06(d) of the Texas Property Tax Code) be, and it is hereby, approved and adopted as the official budget of said district for the year 2014.

Section 3. That the chief appraiser of the Harris County Appraisal District be, and he is hereby, authorized to make the interfund transfers between the general fund and the internal service fund as necessary for expenditures related to the group benefits fund.

Section 4. That the chief appraiser of the Harris County Appraisal District be, and he is hereby, authorized to transfer unencumbered balances from one budget account to another budget account during the 2014 fiscal year in amounts of \$25,000 or less. Amounts exceeding \$25,000 may be transferred under the following circumstances and conditions: A written request to effect such transfers exceeding \$25,000 shall be submitted by the chief appraiser to the Board of Directors. Such request shall identify the budget account from which it is proposed the transfer will be made, the budget account to which it is proposed the transfer will be made, and the need or justification for such transfer. Approval of such request by formal action of the Board of Directors must be obtained before the chief appraiser shall be authorized to make such transfer.

Section 5. That the chief appraiser of the Harris County Appraisal District shall commit that part of the district's general fund balance funds received in 2013 and prior years as penalties under the provisions of Section 22.28, Section 22.29, and Section 23.121(k) of the Texas Property Tax Code and not otherwise committed, for the purpose of funding a budget amendment, if necessary, for fees and legal expenses arising from arbitration and other post appraisal review board appeals conducted under the provisions of Chapter 41A and Chapter 42 of the Property Tax Code, and Chapter 2003, Government Code.

Section 6. That, for the purpose of authenticating the official 2014 budget of the Harris County Appraisal District adopted hereby, a copy of which is attached hereto and made a part

hereof for all purposes, the chairman and secretary of the Board of Directors of said district be, and they are hereby, authorized and directed to affix their signatures on the cover of the original of such budget under the following certification which they shall cause to be placed thereon:

"This is to certify that this is the official 2014 budget of the Harris County Appraisal District approved and adopted by the Board of Directors of said district on August 21, 2013."

Section 7. That the chief appraiser of the district be, and he is hereby, authorized and directed to place or cause to be placed the official, authenticated original of said 2014 budget among the public records of the district and to make the same available for inspection in the office of the district by any person requesting that right and privilege.

PASSED, APPROVED, AND ADOPTED this the 21st day of August, 2013.



Chairman, Board of Directors
Harris County Appraisal District

ATTEST:



Secretary, Board of Directors
Harris County Appraisal District

(SEAL)



***HARRIS COUNTY
APPRAISAL DISTRICT***

2014 BUDGET

January 1, 2014 through December 31, 2014

**REVENUES & EXPENDITURES
FOR ALL DEPARTMENTS**

**Sands L. Stiefer, Chief Appraiser
Houston, Texas
August 2013**

Contents

- 3 District Officials
Board of directors and chief appraiser
- 4 Plan of Organization
The departments and divisions of the district and the number of full time equivalent positions

FINANCIAL SECTION

- 6 2014 Budget
Expenditures for the general fund by line item account
- 8 Expenditure Summary & Method of Financing
Summarizes expenditures by account groups and an estimate of revenue used to finance the expenditures
- 9 Line Item Expenditures by Department
General fund expenditures by line item account for each of the district's 3 operating departments
- 11 2014 Budget with Comparisons
Comparison of the 2014 budget to the 2013 budget and 2012 actual expenditures by line item

TEXAS PROPERTY TAX CODE SECTION

- 14 Schedule of Positions
List of full time equivalent positions in alphabetical order; indicating the pay grade and number of positions for each position title
- 19 Schedule of Appraisal Review Board Members
Number of appraisal review board members eligible for payment
- 20 Salary Schedule and Provisions
Employee pay is determined by three salary schedules: Classified, Technical, and Director; list of line item positions; merit and quality service incentive salary increases; compensatory time; career development program; and, career ladder program

25 General Provisions

Provisions relating to mileage, expense allowances, commissioned security officers uniform cleaning, cell phone allowance, travel regulations, van pool subsidy, general counsel, and reappropriation of certain income

29 Employee Benefits Schedule

Provisions for employee benefits, including paid leave and vacation

32 Appraisal Review Board Provisions

Provisions relating to ARB Members and other appropriations

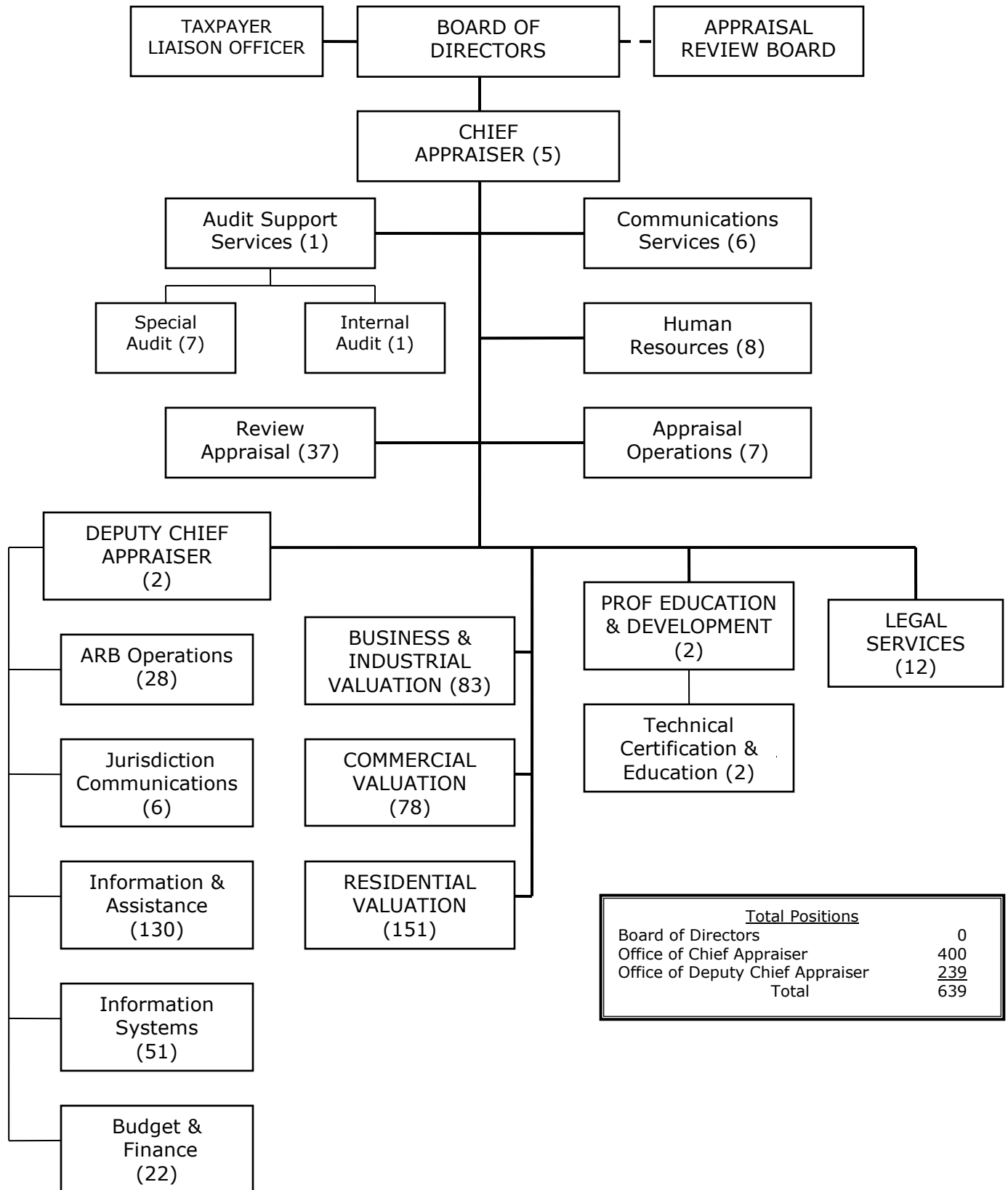
34 Capital Expenditures

List of capital items scheduled for acquisition

35 Estimated Cost Allocation to Taxing Units

List of taxing units allocated a portion of this budget and the estimated amount to be paid

PLAN OF ORGANIZATION – 2014



<u>Total Positions</u>	
Board of Directors	0
Office of Chief Appraiser	400
Office of Deputy Chief Appraiser	<u>239</u>
Total	639

FINANCIAL SECTION

2014 Budget – General Fund

Expenditure Summary and Method of Financing

General Fund – Line Item Expenditures by Department

2014 Budget with Comparisons

DISTRICT OFFICIALS

Harris County Appraisal District Board of Directors 2013

GLENN PETERS
Chairman

TONI TRUMBULL
Secretary

ED HEATHCOTT
Member

RAY HOLTZAPPLE
Member

LAWRENCE MARSHALL
Member

MIKE SULLIVAN
Member

Sands L. Stiefer
Chief Appraiser

2014 BUDGET
GENERAL FUND

Account Number	Account Name	2014 Budget
	Number of Positions	639.0
	Part-time & Seasonal FTEs	8.8
<u>SALARIES, WAGES & RELATED</u>		
	Salaries & Wages	\$32,577,517
	Allowance for Career Development	50,000
	Less Salary Lapse	(948,628)
	Allowance for Merit	600,000
	Reserve for Longevity	412,155
	Reserve for COLA	0
3010	Net Salaries & Wages	32,691,044
3011	ARB Board Members	2,450,000
3015	Contract & Seasonal Labor	0
3020	Shift Differential	32,000
3030	Overtime	160,350
3040	Part-time & Seasonal Wages	187,500
TOTAL SALARIES, WAGES & RELATED		35,520,894
<u>EMPLOYEE BENEFITS & RELATED</u>		
3501	Group Health Insurance	6,119,064
3503	Workers' Compensation Insurance	95,000
3504	Group Life & LTD Insurance	86,484
3505	Group Dental Insurance	217,387
3507	Unemployment Insurance	115,020
3520	Retirement	4,350,473
3526	FICA Medicare Only	476,808
3527	Social Security & Medicare	201,769
TOTAL EMPLOYEE BENEFITS & RELATED		11,662,005
<u>OFFICE & FIELD OPERATIONS</u>		
4001	Office Supplies	134,336
4003	Office Equipment & Maint.	395,200
4011	Telephone & Communication Service	246,100
4020	Copier Leases	94,000
4021	Copier Supplies & Maintenance	143,325
4030	Mapping Reproduction & Supplies	3,400
4040	Public Notice Advertising	18,000
4050	Security Services	162,750
4060	Field Travel, Vanpool & Other Exp	1,123,163
4070	Appraisal Supplies	12,308
4080	Vehicle Gasoline & Maintenance	34,000
4090	Records Storage & Supplies	1,500
4092	Records Conversion Services	0
4097	Employee Recognition Activities	12,000
4100	Postage, Mailing, & Handling Svcs.	2,107,000
4200	Professional Registration & Dues	64,400
4202	Seminars & Other Tuition	221,150

2014 BUDGET
GENERAL FUND

Account Number	Account Name	2014 Budget
4212	Education Travel & Expenses	82,000
4213	Books, Manuals & Publications	315,672
4501	Printing, Forms, & Stationery	81,850
4530	Paper, Copier & Printer	135,320
TOTAL OFFICE & FIELD OPERATIONS		5,387,474
 <u>COMPUTER OPERATIONS</u>		
5010	Computer Leasing	0
5020	CPU & Related Maintenance	105,000
5030	Other Computer Maintenance	11,000
5040	Computer Supplies	34,850
5050	Software Lease & Maintenance	1,172,097
5060	Teleprocessing Lines & Installation	17,500
TOTAL COMPUTER OPERATIONS		1,340,447
 <u>PROFESSIONAL SERVICES</u>		
5510	Financial Auditing	60,300
5520	Legal Services	7,183,967
5525	Arbitration Fees & Services	75,000
5526	State Office of Admin Hearings	5,000
5530	Appraisal Services	1,489,677
5550	Other Professional Services	605,340
5551	Mapping & Records Maintenance	1,104,722
TOTAL PROFESSIONAL SERVICES		10,524,006
 <u>OFFICE SPACE, UTILITIES & RELATED</u>		
6100	Office Space	2,421,904
6150	Utilities	715,000
6200	Building & Fixture Maintenance	819,650
6400	Casualty & Liability Insurance	135,000
TOTAL OFFICE SPACE, UTILITIES & RELATED		4,091,554
 <u>FIXED ASSETS PURCHASES</u>		
6501	Capital Purchases	150,000
TOTAL FIXED ASSETS PURCHASES		150,000
TOTAL BUDGET		\$68,676,380

EXPENDITURE SUMMARY AND METHOD OF FINANCING
2014 BUDGET

<u>BUDGETED EXPENDITURES</u>	2013 BUDGET	2014 BUDGET	Variance	%
<u>Account Groups</u>				
Number of Positions	623.0	639.0	16.0	2.6%
Part-time & Seasonal FTEs	7.4	8.8	1.4	18.9%
Salaries, Wages & Related	\$33,385,422	\$35,520,894	\$2,135,472	6.4%
Employee Benefits	11,025,514	11,662,005	636,491	5.8%
Office & Field Operations	5,310,616	5,387,474	76,858	1.4%
Computer Operations	1,290,947	1,340,447	49,500	3.8%
Professional Services	9,127,159	10,524,006	1,396,847	15.3%
Office Space, Utilities & Maint.	4,132,204	4,091,554	(40,650)	-1.0%
Capital Expenditures	225,000	150,000	(75,000)	-33.3%
TOTAL BUDGET	\$64,496,862	\$68,676,380	\$4,179,518	6.5%
 <u>FINANCING METHOD</u>				
Jurisdiction Allocations	\$61,566,862	\$64,367,413	\$2,800,551	4.5%
Interest Income	30,000	30,000	0	0.0%
Other Income	600,000	600,000	0	0.0%
Application of Restricted Funds	0	1,378,967	1,378,967	
Application of Unrestricted Funds				
General Fund	2,000,000	2,000,000	0	0.0%
Internal Service Fund	300,000	300,000	0	0.0%
TOTAL FINANCING METHOD	\$64,496,862	\$68,676,380	\$4,179,518	6.5%

GENERAL FUND - LINE ITEM EXPENDITURES BY DEPARTMENT
2014 BUDGET

Account Number	Account Name	TOTAL BUDGET	BOARD OF DIRECTORS	OFC CHIEF APPRAISER	DEP CHIEF APPRAISER
	Number of Positions	639.0	0.0	400.0	239.0
	Part-time & Seasonal FTEs	8.8	0.5	3.0	5.3
<u>SALARIES, WAGES & RELATED</u>					
	Salaries & Wages	\$32,577,517	0	20,508,671	12,068,846
	Allowance for Career Development	50,000	0	0	50,000
	Less Salary Lapse	(948,628)	0	(597,194)	(351,434)
	Allowance for Merit	600,000	0	0	600,000
	Reserve for Longevity	412,155	0	258,000	154,155
	Reserve for COLA	0	0	0	0
3010	Net Salaries & Wages	32,691,044	0	20,169,477	12,521,567
3011	ARB Board Members	2,450,000	2,450,000	0	0
3020	Shift Differential	32,000	0	0	32,000
3030	Overtime	160,350	0	66,350	94,000
3040	Part-time & Seasonal Wages	187,500	30,000	72,500	85,000
TOTAL SALARIES, WAGES & RELATED		35,520,894	2,480,000	20,308,327	12,732,567
<u>EMPLOYEE BENEFITS & RELATED</u>					
3501	Group Health Insurance	6,119,064	0	3,830,400	2,288,664
3503	Workers' Compensation Insurance	95,000	0	0	95,000
3504	Group Life & LTD Insurance	86,484	0	53,221	33,263
3505	Group Dental Insurance	217,387	0	136,080	81,307
3507	Unemployment Insurance	115,020	0	72,000	43,020
3520	Retirement	4,350,473	0	2,677,200	1,673,273
3526	FICA Medicare Only	476,808	0	293,418	183,390
3527	Social Security & Medicare	201,769	189,720	5,546	6,503
TOTAL EMPLOYEE BENEFITS & RELATED		11,662,005	189,720	7,067,865	4,404,420
<u>OFFICE & FIELD OPERATIONS</u>					
4001	Office Supplies	134,336	2,400	62,206	69,730
4003	Office Equipment & Maint.	395,200	0	0	395,200
4011	Telephone & Communication Service	246,100	0	0	246,100
4020	Copier Leases	94,000	0	0	94,000
4021	Copier Supplies & Maintenance	143,325	0	0	143,325
4030	Mapping Reproduction & Supplies	3,400	0	0	3,400
4040	Public Notice Advertising	18,000	0	0	18,000
4050	Security Services	162,750	0	0	162,750
4060	Field Travel, Vanpool & Other Exp	1,123,163	2,500	1,024,523	96,140
4070	Appraisal Supplies	12,308	0	12,308	0
4080	Vehicle Gasoline & Maintenance	34,000	0	0	34,000
4090	Records Storage & Supplies	1,500	0	0	1,500
4092	Records Conversion Services	0	0	0	0

GENERAL FUND - LINE ITEM EXPENDITURES BY DEPARTMENT
2014 BUDGET

Account Number	Account Name	TOTAL BUDGET	BOARD OF DIRECTORS	OFC CHIEF APPRAISER	DEP CHIEF APPRAISER
4097	Employee Recognition Activities	12,000	12,000	0	0
4100	Postage, Mailing, & Handling Svcs.	2,107,000	0	0	2,107,000
4200	Professional Registration & Dues	64,400	0	0	64,400
4202	Seminars & Other Tuition	221,150	16,000	33,750	171,400
4212	Education Travel & Expenses	82,000	4,500	38,000	39,500
4213	Books, Manuals & Publications	315,672	0	243,200	72,472
4501	Printing, Forms, & Stationery	81,850	0	0	81,850
4530	Paper, Copier & Printer	135,320	0	0	135,320
TOTAL OFFICE & FIELD OPERATIONS		5,387,474	37,400	1,413,987	3,936,087
<u>COMPUTER OPERATIONS</u>					
5010	Computer Leasing	0	0	0	0
5020	CPU & Related Maintenance	105,000	0	0	105,000
5030	Other Computer Maintenance	11,000	0	0	11,000
5040	Computer Supplies	34,850	0	0	34,850
5050	Software Lease & Maintenance	1,172,097	0	0	1,172,097
5060	Teleprocessing Lines & Installation	17,500	0	0	17,500
TOTAL COMPUTER OPERATIONS		1,340,447	0	0	1,340,447
<u>PROFESSIONAL SERVICES</u>					
5510	Financial Auditing	60,300	0	0	60,300
5520	Legal Services	7,183,967	7,183,967	0	0
5525	Arbitration Fees & Services	75,000	75,000	0	0
5526	State Office of Admin Hearings	5,000	5,000	0	0
5530	Appraisal Services	1,489,677	0	1,489,677	0
5550	Other Professional Services	605,340	26,000	77,000	502,340
5551	Mapping & Records Maintenance	1,104,722	0	0	1,104,722
TOTAL PROFESSIONAL SERVICES		10,524,006	7,289,967	1,566,677	1,667,362
<u>OFFICE SPACE, UTILITIES & RELATED</u>					
6100	Office Space	2,421,904	0	0	2,421,904
6150	Utilities	715,000	0	0	715,000
6200	Building & Fixture Maintenance	819,650	0	0	819,650
6400	Casualty & Liability Insurance	135,000	0	0	135,000
TOTAL OFFICE SPACE, UTILITIES & RELATED		4,091,554	0	0	4,091,554
<u>FIXED ASSETS PURCHASES</u>					
6501	Capital Purchases	150,000	0	0	150,000
TOTAL FIXED ASSETS PURCHASES		150,000	0	0	150,000
TOTAL BUDGET		<u>\$68,676,380</u>	<u>\$9,997,087</u>	<u>\$30,356,856</u>	<u>\$28,322,437</u>

2014 BUDGET WITH COMPARISONS
2013 BUDGET & 2012 ACTUAL

Account Number	Account Name	2012 ACTUAL	2013 BUDGET	2014 BUDGET
	Number of Positions	623	623	639
	Part-time & Seasonal FTEs	5.7	7.4	8.8
<u>SALARIES, WAGES & RELATED</u>				
	Salaries & Wages	\$28,198,398	\$30,680,688	\$32,577,517
	Allowance for Career Development	0	50,000	50,000
	Less Salary Lapse	0	(772,546)	(948,628)
	Allowance for Merit	0	90,000	600,000
	Reserve for Longevity	0	411,180	412,155
	Reserve for COLA			0
3010	Net Salaries & Wages	28,198,398	30,459,322	32,691,044
3011	ARB Board Members	1,888,351	2,450,000	2,450,000
3015	Contract & Seasonal Labor	0	0	0
3020	Shift Differential	301,634	32,000	32,000
3030	Overtime	137,379	217,600	160,350
3040	Part-time & Seasonal Wages	142,832	226,500	187,500
TOTAL SALARIES, WAGES & RELATED		30,668,594	33,385,422	35,520,894
<u>EMPLOYEE BENEFITS & RELATED</u>				
3501	Group Health Insurance	5,907,040	5,690,930	6,119,064
3503	Workers' Compensation Insurance	84,409	130,000	95,000
3504	Group Life & LTD Insurance	102,006	80,763	86,484
3505	Group Dental Insurance	216,804	216,804	217,387
3507	Unemployment Insurance	166,703	162,603	115,020
3520	Retirement	5,205,669	4,094,383	4,350,473
3526	FICA Medicare Only	433,065	445,278	476,808
3527	Social Security & Medicare	125,816	204,753	201,769
TOTAL EMPLOYEE BENEFITS & RELATED		12,241,512	11,025,514	11,662,005
<u>OFFICE & FIELD OPERATIONS</u>				
4001	Office Supplies	114,051	135,611	134,336
4003	Office Equipment & Maint.	386,127	388,200	395,200
4011	Telephone & Communication Service	202,266	241,700	246,100
4020	Copier Leases	89,122	94,000	94,000
4021	Copier Supplies & Maintenance	86,478	152,125	143,325
4030	Mapping Reproduction & Supplies	3,707	5,000	3,400
4040	Public Notice Advertising	12,197	19,900	18,000
4050	Security Services	109,284	168,725	162,750
4060	Field Travel, Vanpool & Other Exp	948,403	1,009,098	1,123,163
4070	Appraisal Supplies	6,538	10,249	12,308
4080	Vehicle Gasoline & Maintenance	23,656	34,000	34,000
4090	Records Storage & Supplies	375	8,000	1,500
4092	Records Conversion Services	0	0	0
4097	Employee Recognition Activities	14,170	6,000	12,000
4100	Postage, Mailing, & Handling Svcs.	1,792,409	2,107,000	2,107,000
4200	Professional Registration & Dues	59,907	70,000	64,400
4202	Seminars & Other Tuition	140,105	272,993	221,150
4212	Education Travel & Expenses	104,165	70,985	82,000
4213	Books, Manuals & Publications	246,397	306,550	315,672
4501	Printing, Forms, & Stationery	55,061	81,250	81,850
4530	Paper, Copier & Printer	112,489	125,230	135,320
TOTAL OFFICE & FIELD OPERATIONS		4,506,907	5,310,616	5,387,474

2014 BUDGET WITH COMPARISONS
2013 BUDGET & 2012 ACTUAL

Account Number	Account Name	2012 ACTUAL	2013 BUDGET	2014 BUDGET
<u>COMPUTER OPERATIONS</u>				
5010	Computer Leasing	0	0	0
5020	CPU & Related Maintenance	93,384	105,000	105,000
5030	Other Computer Maintenance	0	10,000	11,000
5040	Computer Supplies	11,093	34,850	34,850
5050	Software Lease & Maintenance	852,513	1,123,597	1,172,097
5060	Teleprocessing Lines & Installation	0	17,500	17,500
TOTAL COMPUTER OPERATIONS		956,990	1,290,947	1,340,447
<u>PROFESSIONAL SERVICES</u>				
5510	Financial Auditing	56,492	58,000	60,300
5520	Legal Services	4,162,474	5,805,000	7,183,967
5525	Arbitration Fees & Services	50,400	75,000	75,000
5526	State Office of Admin Hearings	0	15,000	5,000
5530	Appraisal Services	1,349,084	1,457,677	1,489,677
5550	Other Professional Services	575,950	611,760	605,340
5551	Mapping & Records Maintenance	870,000	1,104,722	1,104,722
TOTAL PROFESSIONAL SERVICES		7,064,400	9,127,159	10,524,006
<u>OFFICE SPACE, UTILITIES & RELATED</u>				
6100	Office Space	2,411,657	2,417,904	2,421,904
6150	Utilities	683,889	730,500	715,000
6200	Building & Fixture Maintenance	746,301	833,800	819,650
6400	Casualty & Liability Insurance	121,673	150,000	135,000
TOTAL OFFICE SPACE, UTILITIES & RELATED		3,963,520	4,132,204	4,091,554
<u>FIXED ASSETS PURCHASES</u>				
6501	Capital Purchases	739,880	225,000	150,000
TOTAL FIXED ASSETS PURCHASES		739,880	225,000	150,000
		<u>\$60,141,803</u>	<u>\$64,496,862</u>	<u>\$68,676,380</u>
TOTAL BUDGET				

TEXAS PROPERTY TAX CODE SECTION

The following schedules are provided pursuant to Section 6.06(a) of the Texas Property Tax Code:

Schedule of Positions

Schedule of Appraisal Review Board Members

Salary Schedule and Provisions

General Provisions

Employee Benefits Schedule – General & Special Provisions

Appraisal Review Board Provisions

2014 Capital Expenditures

2014 Estimated Cost Allocation to Taxing Units

SCHEDULE OF APPRAISAL DISTRICT POSITIONS - 2014 BUDGET

Position	Salary Group	Number of Positions
Accounting Specialist IV	17	3
Accounting Specialist V	18	1
Accounts Examiner II	17	2
Accounts Examiner III	18	1
Accounts Examiner IV	20	1
Admin of Tech Prog I	17	6
Admin Tech I	8	16
Admin Tech II	11	11
Admin Tech III	13	12
Admin Tech IV	15	11
Admin Tech V	17	2
Administrative Assistant I	17	2
Administrative Assistant II	18	2
Administrative Assistant III	19	1
ADP Equipment Oper III	12	2
ADP Equipment Oper IV	13	1
ADP Supervisor III	16	1
Agent Section Coordinator	21	1
Appraisal Data Analyst	T1	1
Appraisal Hearings Supervisor	T1	1
Appraisal Information Specialist I	19	1
Appraisal Information Specialist III	T1	1
Appraisal Operations Specialist	T2	1
Appraisal Support Technician I	19	1
Appraisal Support Technician III	T1	1
Appraiser I	15	46
Appraiser II	16	61
Appraiser III	17	43
Appraiser IV	18	13
ARB Administrative Assistant I	17	1
ARB Office Coordinator	21	1
ARB Support Specialist I	12	2
ARB Support Specialist II	14	2
ARB Support Supervisor	18	1
ARB Support Technician I	10	4
ARB Support Technician II	11	3
ARB Support Technician III	12	1
Assistant Chief Appraiser	-	1
Assistant Chief Financial Officer	D6	1
Assistant CIO for Applications	T5	1
Assistant CIO for Systems	T5	1
Assistant Director, Info & Assist	D1	1
Assistant Network Administrator	T1	1
Associate Chief Appraiser	T5	1
Associate Chief Appraiser, Bus & Indus	T5	1
Associate Chief Appraiser, Commercial	T5	1
Associate Chief Appraiser, Residential	T5	1
Audio Visual Specialist	15	1
Benefits Administrator	20	1
BIPD Project Specialist	T1	1

SCHEDULE OF APPRAISAL DISTRICT POSITIONS - 2014 BUDGET

Position	Salary Group	Number of Positions
CAMA Design Analyst I	T1	2
CAPPA Valuation Analyst II	18	5
CAPPA Valuation Analyst III	19	3
CAPPA Valuation Analyst IV	20	1
CAPPA Valuation Supervisor	21	1
Chief Appraiser	-	1
Chief Communications Officer	D3	1
Chief Financial Officer	T5	1
Chief Human Relations Officer	T3	1
Chief Information Officer	-	1
Chief Legal Officer	T5	1
Chief of Appraisal Operations	T5	1
Commercial Field Supervisor	20	1
Commercial Operations Manager	D3	1
Commercial Valuation Analyst II	18	10
Commercial Valuation Analyst III	19	11
Commercial Valuation Analyst IV	20	4
Commercial Valuation Analyst V	21	2
Commercial Valuation Manager	D3	1
Commercial Valuation Supervisor	21	2
Commissioned Security Officer II	14	1
Commissioned Security Officer III	15	3
Commissioned Security Officer IV	17	2
Community Relations Associate	19	1
Deputy Chief Appraiser	-	1
Development Section Supervisor	T3	1
Director, ARB Operations	D5	1
Director, Audit Support	D2	1
Director, Info & Assist	D3	1
Director, Jurisdiction Communications	D3	1
Div Director, Human Resources	D3	1
Div Director, Review Appraisal	T3	1
Div Director, Special Audit	D4	1
Engineer V	21	2
Executive Assistant	19	1
Executive Projects Director	T3	1
Exemption Coordinator	21	1
Exemption Specialist I	12	1
Exemption Specialist II	13	11
Exemption Specialist III	14	1
Exemption Specialist IV	17	5
Exemption Specialist V	18	1
Geographic Information Specialist II	17	5
Geographic Information Specialist III	18	4
GIS Programmer Analyst V	T1	1
Hearings Specialist I	14	1
Hearings Specialist II	15	2
Hearings Specialist III	16	1
Hearings Supervisor I	18	1
Hearings Technician I	11	3

SCHEDULE OF APPRAISAL DISTRICT POSITIONS - 2014 BUDGET

Position	Salary Group	Number of Positions
Hearings Technician II	12	2
HRIS Administrator	21	1
HRIS Systems Specialist	19	1
HRIS Systems Specialist II	20	1
I & A Counter Supervisor	19	1
Imaging Technician III	11	2
Industrial Valuation Specialist II	18	1
Industrial Valuation Specialist III	19	3
Industrial Valuation Specialist IV	20	3
Industrial Valuation Supervisor	21	1
Information Systems Liaison II	D2	1
Internal Auditor	21	1
IS Project Manager	T3	1
IS Special Projects Director	T2	2
IS Special Projects Director II	T3	1
Jurisdiction Coordinator II	18	3
Legal Assistant	16	1
Legal Counsel I	T1	1
Legal Counsel III	T3	3
Legal Counsel IV	T5	1
Manager, Ag Valuation	D2	1
Manager, Budget & Finance	21	1
Manager, Industrial Section	D3	1
Manager, Personal Property Section	D3	1
Manager, Purchasing & Facilities	D4	1
Manager, Review Appraisal	D6	1
Manager, Technical Certification & Education	21	1
Mgr, Personal Prop Corrections Section	D3	1
Network Administrator II	T2	1
Network Service Technician	18	1
New Subdivision Coordinator	21	1
Operations Support Spec I	8	5
Operations Support Spec II	9	6
Operations Support Spec III	10	4
Operations Support Spec IV	11	3
Ownership Research Supervisor	19	1
Paralegal III	16	1
Paralegal IV	18	1
Payroll Specialist II	19	2
Personal Property Field Supervisor	20	1
Problem Resolution Coordinator	21	1
Processing Supervisor	T1	1
Program Administrator II	18	1
Program Administrator IV	20	1
Programmer Analyst I	18	1
Programmer Analyst II	20	2
Programmer Analyst III	21	2
Programmer Analyst IV	T1	1
Programmer Analyst V	T2	8
Programmer Analyst VI	T3	4

SCHEDULE OF APPRAISAL DISTRICT POSITIONS - 2014 BUDGET

Position	Salary Group	Number of Positions
Programmer III	17	2
Public Affairs Officer I	16	1
Public Affairs Officer II	18	1
Public Affairs Officer V	21	1
Public Information Technician I	16	1
Public Information Technician II	17	1
Public Information Technician III	18	1
Purchaser II	15	2
Records Management Officer III	21	1
Records Management Specialist	13	1
Recruiter	19	1
Research Associate I	17	4
Research Associate II	19	2
Research Associate III	21	2
Research Coordinator	19	1
Research Specialist	18	1
Residential Field Manager	D3	1
Residential Field Supervisor	20	1
Residential Valuation Analyst III	19	4
Residential Valuation Analyst IV	20	5
Residential Valuation Analyst V	21	3
Residential Valuation Manager	D3	1
Residential Valuation Specialist	T1	1
Residential Valuation Supervisor	21	1
Review Appraiser I	19	6
Review Appraiser II	20	3
RPD Project Specialist	20	1
Security Manager	21	1
Senior Legal Counsel	T5	1
Senior Review Appraiser I	T1	4
Senior Review Appraiser III	T3	4
Software Project Manager	T2	1
Supervising Appraiser I	19	10
Supervising Appraiser II	20	5
Supervising Examiner	21	1
Supervising Paralegal II	21	1
Support Services Operations Analyst	21	1
Support Supervisor III	15	1
Support Supervisor IV	17	3
System Support Coordinator	21	1
Systems Analyst II	18	1
Systems Support Spec III	14	2
Systems Support Spec IV	16	3
Systems Support Spec V	17	1
Systems Support Spec VI	18	2
Systems Support Supv I	T1	1
Technical Assist Spec I	11	1
Technical Assist Spec II	12	5
Technical Assist Spec III	13	24
Technical Assist Spec IV	14	5

SCHEDULE OF APPRAISAL DISTRICT POSITIONS - 2014 BUDGET

Position	Salary Group	Number of Positions
Technical Assist Spec V	15	15
Technical Assist Spec VI	16	1
Telephone Center Coordinator	21	1
Telephone Information Spec I	12	5
Telephone Information Spec II	13	8
Telephone Information Spec III	15	6
Telephone Information Spec IV	16	1
Telephone Information Spec VI	18	1
Training & Development Specialist	21	1
		639

SCHEDULE OF APPRAISAL REVIEW BOARD MEMBERS
2014 BUDGET

<u>Position</u>	<u>Salary Group</u>	<u>Number of Positions</u>
ARB Member	per diem	<u>180</u>
TOTAL		<u>180</u>

2014 SALARY SCHEDULE AND PROVISIONS

A. Classified Positions Salary Schedule.

1. Salary groups C8 through C14:

SALARY GROUP

	C8	C9	C10	C11	C12	C13	C14
1	24,907	26,503	28,157	29,997	31,989	34,092	36,366
2	25,712	27,311	29,058	30,993	33,024	35,220	37,570
3	26,503	28,157	29,997	31,989	34,092	36,366	38,791
4	27,311	29,058	30,993	33,024	35,220	37,570	40,068
5	28,157	29,997	31,989	34,092	36,366	38,791	41,363
6	29,058	30,993	33,024	35,220	37,570	40,068	42,734
7	29,997	31,989	34,092	36,366	38,791	41,363	44,110
8	30,993	33,024	35,220	37,570	40,068	42,734	45,627
9	31,989	34,092	36,366	38,791	41,363	44,110	47,112
10	33,024	35,220	37,570	40,068	42,734	45,627	48,636
11	34,092	36,366	38,791	41,363	44,110	47,112	50,270
12	35,179	37,536	40,053	42,715	45,550	48,663	51,925
13	36,301	38,742	41,358	44,110	47,036	50,261	53,635
14	37,457	39,988	42,703	45,550	48,572	51,914	55,399
15	38,653	41,273	44,095	47,036	50,160	53,621	57,221

**S
T
E
P**

2. Salary Groups C15 through C21:

SALARY GROUP

	C15	C16	C17	C18	C19	C20	C21
1	38,791	41,363	44,110	48,172	51,425	54,848	58,550
2	40,068	42,734	45,627	49,788	53,099	56,653	60,486
3	41,363	44,110	47,112	51,425	54,848	58,550	62,496
4	42,734	45,627	48,636	53,099	56,653	60,486	64,525
5	44,110	47,112	50,270	54,848	58,550	62,496	66,683
6	45,627	48,636	51,923	56,653	60,486	64,525	68,933
7	47,112	50,270	53,613	58,550	62,496	66,683	71,163
8	48,636	51,923	55,378	60,486	64,525	68,933	73,584
9	50,270	53,613	57,178	62,496	66,683	71,163	75,975
10	51,923	55,378	59,038	64,525	68,933	73,584	78,442
11	53,613	57,178	60,957	66,683	71,163	75,975	80,993
12	55,377	59,058	62,960	68,886	73,513	78,491	83,663
13	57,199	61,003	65,030	71,161	75,942	81,092	86,423
14	59,079	63,012	67,168	73,513	78,449	83,778	89,272
15	61,022	65,085	69,376	75,944	81,040	86,554	92,217

**S
T
E
P**

B. Technical Positions Salary Schedule.

SALARY GROUP

	T1	T2	T3	T4	T5	T6	
S T E P	1	60,240	65,158	71,994	77,869	84,222	91,088
	2	62,650	67,764	74,873	80,982	87,591	94,741
	3	65,158	70,474	77,869	84,222	91,088	98,534
	4	67,764	73,292	80,982	87,591	94,741	102,469
	5	70,474	76,225	84,222	91,088	98,534	106,582
	6	73,292	79,273	87,591	94,741	102,469	110,826
	7	76,225	82,449	91,088	98,534	106,582	115,260
	8	79,273	85,739	94,741	102,469	110,826	119,870
	9	82,449	89,171	98,534	106,582	115,260	124,667
	10	85,739	92,735	102,469	110,826	119,870	129,653
	11	89,171	96,449	106,582	115,260	124,667	134,840
	12	92,735	100,308	110,826	119,870	129,653	140,234
	13	96,449	104,321	115,260	124,667	134,840	145,844
	14	100,308	108,493	119,870	129,653	140,234	151,677
	15	104,321	112,834	124,667	134,840	145,844	157,745

C. Director Positions Salary Schedule.

1. Director groups D1 through D5:

SALARY GROUP

	D1	D2	D3	D4	D5	
S T E P	1	60,418	61,698	63,271	67,993	72,251
	2	62,362	63,935	65,507	70,230	74,290
	3	64,380	65,955	67,530	72,251	76,458
	4	66,421	67,995	69,570	74,290	78,722
	5	68,588	70,161	71,738	76,458	80,965
	6	70,852	72,426	74,000	78,722	83,394
	7	73,093	74,667	76,242	80,965	85,798
	8	75,526	77,099	78,675	83,394	88,278
	9	77,926	79,503	81,076	85,798	90,840
	10	80,408	81,983	83,554	88,278	93,510
	11	82,970	84,546	86,118	90,840	96,259
	12	85,644	87,251	88,814	93,510	99,088
	13	88,403	90,045	91,596	96,259	102,002
	14	91,254	92,926	94,464	99,088	105,470
	15	94,195	95,899	97,421	102,002	109,055

2. Director groups D6 through D10:

SALARY GROUP

	D6	D7	D8	D9	D10	
1	76,458	80,965	85,798	90,840	96,259	
2	78,722	83,394	88,278	93,510	99,088	
3	80,965	85,798	90,840	96,259	102,002	
4	83,394	88,278	93,510	99,088	105,470	
5	85,798	90,840	96,259	102,002	109,055	
S	6	88,278	93,510	99,088	105,470	112,763
T	7	90,840	96,259	102,002	109,055	116,597
E	8	93,510	99,088	105,470	112,763	120,562
P	9	96,259	102,002	109,055	116,597	124,661
	10	99,088	105,470	112,763	120,562	128,899
	11	102,002	109,055	116,597	124,661	133,282
	12	105,470	112,763	120,562	128,899	137,814
	13	109,055	116,597	124,661	133,282	142,500
	14	112,763	120,562	128,899	137,814	148,200
	15	116,597	124,661	133,282	142,500	154,128

D. Schedule of Positions Outside the Classification Schedules.

Chief Appraiser	\$185,400
Deputy Chief Appraiser	\$155,530
Assistant Chief Appraiser	\$152,850
Chief Information Officer	\$153,700

E. It is expressly provided that the chief appraiser may, with the approval of the board of directors, grant merit salary increases to district employees. Such merit increases shall be subject to the following:

1. The maximum shall not exceed the amount specifically budgeted as "Allowance for Merit Increases".
2. For an employee to be eligible for a merit salary increase, the following criteria must be met:
 - (i) the employee must have been employed by the district for at least six continuous months prior to the award;
 - (ii) at least six months must have elapsed since the employee's last promotion;
 - (iii) the employee's job performance and productivity must be consistently above that normally expected or required as evidenced by performance evaluation; and,
 - (iv) an employee may not receive more than one merit salary increase in a single fiscal year.

- F. In lieu of a merit salary increase the chief appraiser may, with the approval of the board of directors, award quality service incentive salary increases, disbursed as a single payment, to employees under the following conditions:
1. The employee must have been employed by the district in a full-time position for at least 12 continuous months and must not have received a promotion or merit salary increase for a minimum of 6 months prior to the award;
 2. The employee's high level of performance must be documented by the performance evaluation system;
 3. The lump sum award may be no more than 6.8% of the employee's annual base rate of pay;
 4. Six months must have elapsed since the employee's last quality salary increase;
 5. Funding for such increases will be made only from the overall limits specified under Paragraph E, above; and,
 6. A quality salary increase is a one-time payment and does not increase the salary level for the following year.
- G. Career Development Program. The chief appraiser is authorized to award achievement pay according to the district's policy under the Career Development Program. The program provides for one-time achievement payment to employees having earned the Registered Professional Appraisal professional designation or, for non-appraisal employees, for completing approved coursework. Employees who receive or hold more than one advanced designation (RPA, IAAO, MAI, CAI, TALCB, CTA, CFE) may be awarded recurring annual achievement payments.
- H. The chief appraiser may substitute other classified position titles for those listed in this Schedule of Positions when the chief appraiser finds that such reclassifications are necessary for effective performance of the district's responsibilities. The chief appraiser is further authorized to reassign an employee serving in a classified position to another classified position or to move the employee to another rate within the employee's salary group range as necessary to maintain desirable salary relationships:
1. between and among employees of the district; or
 2. between employees of the district and employees who hold similar positions in the relevant labor market; or
 3. to retain staff essential to the district's succession plans.
- I. TDLR Career Ladder. The chief appraiser is authorized to promote staff upon reaching levels I, II, III and IV Property Tax Professional Appraiser designations with the Texas Department of Licensing and Regulation and satisfaction of such other requirements as the chief appraiser may impose. The schedule below (career ladder) is the minimum pay grade and step and does not preclude a promotion to a higher pay grade if the staff member is otherwise qualified for a

currently open position. Promotions under these TDLR milestones are made within the current occupied budgeted position and the salary differential is funded through salary lapse.

Position Title Or Equivalent	TDLR Designation	Minimum Pay Group	Minimum Pay Step	Minimum Months In Position & Designation
Appraiser Trainee II	Level I	14	1	6
Appraiser I	Level I	15	1	6
Appraiser I	Level II	15	2	12
Appraiser II	Level III	16	1	12
Appraiser III (RPA)	Level IV	17	1	

- J. The chief appraiser is authorized to pay a full-time employee who is a state approved instructor a stipend of \$500 if the employee teaches two or more state certification courses during a calendar year.
- K. The chief appraiser is authorized to pay salaried exempt employees straight time for compensatory time worked during periods when paid leave is restricted.

GENERAL PROVISIONS

A. Mileage Allowance.

1. Use of Privately Owned Vehicles. Employees, board members, or persons assigned to the district by another agency under contract who use their privately owned vehicles on official district business are authorized reimbursement at the rate authorized by the Internal Revenue Service as the standard mileage deduction rate (currently \$0.565/mile for 2013).
2. Monthly Vehicle Allowance. The chief appraiser is authorized to pay a monthly vehicle allowance for appraisal positions whose job responsibilities require that they spend the majority of their time outside the district headquarters in an amount not to exceed \$450 per month. Division directors shall annually prepare a list of the employees and position numbers for which the monthly allowance is authorized. The total amount paid under this provision may not exceed the amount allocated in this budget for that purpose.
3. Idling Allowance. Appraisers performing as group leaders, or who are assigned to pre-review, review and quality control functions are authorized an "idling allowance" of \$1.00 per hour in addition to reimbursement for actual mileage as provided in the district's appraisal manual.
4. Audit Support Services. Commissioned officers and employees assigned to the Audit Support Services Division who engage in investigations or field audits are entitled to a vehicle allowance not to exceed \$450 per month for official use of their personal vehicles.
5. Reimbursement at Standard Mileage Rate. If the monthly vehicle allowance is insufficient to reimburse a designated employee for miles actually driven in the conduct of district business, that employee's reimbursement for the period will be calculated at the standard mileage rate.
6. Other Provisions. An employee who is transferred from a position that is authorized a vehicle allowance may be transferred at a higher salary step to offset the loss of a vehicle allowance. If an employee who is authorized a vehicle allowance uses a district owned vehicle on any day, the vehicle allowance is prorated by the number of days the district owned vehicle is used whether part of a day or a whole day.

B. Expense Allowance. The following listed positions are authorized an expense allowance in lieu of a vehicle allowance, in-district mileage, and incidental in-district expenses at the monthly rate indicated:

Chief Appraiser	\$850
Deputy Chief Appraiser	\$550
Assistant Chief Appraiser	\$550
Chief, Appraisal Operations	\$550
Chief Information Officer	\$550
Chief Financial Officer	\$550
Director, Audit Support	\$550
Director, Jurisdiction Communications	\$550
Director, Information & Assistance	\$550

- C. Uniform Cleaning Reimbursement. Commissioned security officers who are required to regularly wear district-provided uniforms are entitled to reimbursement for the actual cost of professional uniform cleaning in an amount not to exceed \$45.00 per month.
- D. Cell Phone Allowance. In lieu of providing a district-owned cellular phone to an employee whose duties require it, the chief appraiser is authorized to pay a monthly cellular phone allowance as follows: \$10 to \$45 per month, depending on the number of minutes of business use projected, for basic cellular service, and an additional \$50 per month for data services if the chief appraiser determines that data services are appropriate. An employee who receives a cellular phone allowance under this provision must, at his or her own expense, obtain equipment and cellular services meeting minimum specifications that are approved by the chief appraiser or his designee. The equipment and service must be in working order at all times during the period for which an allowance is paid. The total amount paid under this provision may not exceed the amount allocated in this budget for cellular phone and data services.
- E. Travel Expenses.
 - 1. Non-overnight Travel.
 - a. The chief appraiser, a member of the board of directors, a district employee, or a person assigned to the district by another agency under contract who has been designated to represent the chief appraiser or a board member, or a district employee who is traveling with the chief appraiser or a board member may receive reimbursement of actual expenses for meals when traveling outside the district's boundaries. The meal receipts must be attached to the travel expense report if the amount claimed for a meal exceeds \$9.00.
 - b. Other employees may be reimbursed for meal expenses incurred on a day the employee conducts official business outside the district's boundaries for no fewer than six consecutive hours on the day the expenses are incurred in an amount not to exceed \$36 per day. However, the maximum reimbursement for breakfast may not exceed \$9.00, exceed \$17 for lunch, or exceed \$19 for dinner. Meal receipts must be attached to the travel expense report if the amount claimed for a meal exceeds \$9.00.
 - 2. Overnight Travel.
 - a. The chief appraiser, a member of the board of directors, a district employee or a person assigned to the district by another agency under contract who has been designated to represent the chief appraiser or a board member, or a district employee who is traveling with the chief appraiser or a board member may receive reimbursement for actual expenses for meals, lodging, and incidental expenses authorized by this section. In lieu of claiming actual expenses, a person may elect to be reimbursed in the manner provided for in subsection 2.b. of this section.
 - b. Other employees, as well as persons enumerated in subsection 2.a. of this section who elect to do so, may be reimbursed for actual expenses of lodging at a commercial lodging establishment and an allowance for meals in an

amount not to exceed the maximum per diem allowance authorized for that locality in the current federal travel regulations unless the chief appraiser determines, in advance of the travel, that local conditions necessitate a change in the lodging rate for a particular location. An employee may reduce the maximum meal reimbursement rate for a locality and use the reduction to increase the maximum lodging reimbursement rate for the locality, and may also be reimbursed for authorized incidental expenses. In calculating the applicable meal allowance for a particular locality, the amounts allowed for the first and last day of travel are reduced to 50% of the daily federal rate if the person begins travel after 1 p.m. on the first day or returns and ends travel before 1 p.m. on the last day.

- c. A person authorized to be reimbursed for overnight travel expenses may receive reimbursement for the person's actual expenses for meals and lodging when traveling outside the continental United States.
 - d. Persons who are authorized to claim actual expenses and elect to do so must provide lodging and meal receipts with their travel expense report. An employee who claims expenses on a per diem basis must submit lodging receipts with the travel expense report.
 - e. Allowable incidental expenses include taxes levied on lodging, taxi fare, airport limousine service, airport or other parking charges, and business-related telephone calls and/or reasonable internet connection charges. Receipts for incidental expenses must be attached to the travel expense report.
3. Transportation Expenses.
- a. Employees, board members, or persons assigned to the district by another agency under contract who travel outside the district by personal auto will be reimbursed for mileage at the same rate used for in-district mileage. Travel must be by the most direct route. If two or more employees are attending the same business function, they should travel together if possible to minimize mileage expense. A person's total mileage reimbursement for a trip may not exceed the cost of round trip air travel by coach or economy class. The chief appraiser may require an employee traveling outside the district to use a district-owned vehicle instead of the employee's personal vehicle or other form of conveyance.
 - b. Persons who travel by air must fly coach or economy class. All flight arrangements should be made through the district's travel coordinator in the Office of Chief Appraiser.
4. Purchase of Alcoholic Beverages Prohibited. A person who travels on official business may not claim reimbursement from district funds for the purchase of alcoholic beverages.
5. Completion of Travel Expense Reports. After completion of authorized out-of-district travel, the person may not be reimbursed for travel expenses until the person submits a written travel report on the form prescribed by the chief appraiser. The form must clearly outline the official purpose of the travel and summarize, on a daily basis, the duties performed and expenses incurred or per diem claimed.

- F. Reappropriations. Monies received by the district as payment for copying charges are reappropriated to the district to offset the cost of making such copies. Monies received by the district under a Grant or Interlocal Contract are appropriated to the district to pay the cost of conducting the activity or activities authorized by such Grant or Contract. To the extent penalties may be imposed under any section of the Tax Code, penalty monies actually received are reappropriated to the district to offset the cost of operations, less any amounts required by law to be remitted to the appropriate taxing units.
- G. Vanpool Subsidy. The district is a member of the METRO STAR Vanpool program. Employees who participate are authorized a monthly subsidy of \$35.00. Participation is limited to an appropriation of \$42,000.
- H. Employee Recognition Activities. There is appropriated the sum of \$12,000 to be used for service awards and other employee recognition activities as approved by the board of directors.
- I. General Counsel. Pursuant to §6.05(j), Property Tax Code, the board may employ a general counsel to the district to serve at the will of the board. The general counsel shall provide counsel directly to the board and perform other duties and responsibilities as determined by the board. The general counsel is entitled to compensation as authorized by the board and funds are provided in Account 5520 - Legal Services.

EMPLOYEE BENEFITS SCHEDULE
GENERAL & SPECIAL PROVISIONS

- A. Health and Dental Benefits. The district provides health and dental benefits for all full time regular employees. New employees are covered on the first day of the month following a 30-day waiting period. Under the district's Flexible Benefits Plan, employees may select from a variety of coverage, but must select basic health coverage. The cost of coverage selections under the plan, which exceeds the provided allowance, is borne by the employee. The board of directors determines the amount of the allowance for employees and retirees when health and dental contracts are renewed near the end of the year. Eligible retirees may continue coverage under the district's health plan until age 65 or eligible for Medicare. Retirees eligible for Medicare may enroll in a Medicare Supplement Plan offered by the Texas Association of Counties.
- B. Life and Disability Insurance. The district also provides life and disability insurance to all full time regular employees. The cost of life and disability insurance for the employee is paid by the district. Employees may purchase additional life and accidental death insurance for themselves and their dependents under the Flexible Benefits Plan. Retirees are not eligible for coverage under the life and disability plans.
- C. Texas County & District Retirement System (TCDRS). This budget provides funding for the employee retirement plan. The employee contribution rate is 7% of salary and the district contribution rate is composed of a TCDRS actuarial determination plus an amount for an annuitant COLA if authorized by the board of directors, and the supplemental death benefit component. The TCDRS Supplemental Death Benefits Fund provides for a lump-sum death benefit payment to the beneficiary of a deceased employee-member equal to a year's salary in addition to a return of the deceased's personal deposits and interest earnings or a Deferred Service Retirement pension benefit. Upon the death of a retired member, the beneficiary is provided a lump-sum payment equal to \$5,000.
- D. Workers' Compensation Insurance. All full time regular and part-time employees, and members of the board of directors and appraisal review board are protected with workers' compensation insurance. This budget provides coverage through participation in the Texas Municipal League Intergovernmental Risk Pool.
- E. Unemployment Insurance. The district provides unemployment insurance for all district employees.
- F. Social Security. District employees do not participate in the federal Old Age, Survivors, and Disability Insurance (OASDI) program. Part-time employees who are not members of the Texas County & District Retirement System are required to contribute to Social Security. This budget provides for the employer's matching amount.
- G. Federal Medicare Coverage. Most district employees participate in the Medicare portion of the Federal Insurance Contribution Act (Social Security). Employees contribute to this program at a rate of 1.45% of wages paid. Funding is provided in this budget for the employer's matching amount.

- H. Longevity Pay. All full time regular employees, beginning with the first pay period after their first year of service with the district, are entitled to longevity pay calculated on the basis of \$5.00 per month per year of service, not to exceed \$150.00 per month. Employees returning to employment with the district after a break in service of less than five years are not entitled to longevity pay until after completing one year of continuous service. After the one-year waiting period, the employee's prior service of whole years is included in the calculation of longevity pay.
- I. Sick Leave. All full time regular employees are entitled to sick leave subject to the following conditions:
1. An employee will earn sick leave entitlement beginning with the first day of employment with the district and ending on the last day of duty. Sick leave entitlement shall be earned at the rate of 3.6920 hours per regular pay period, not to exceed 12 days per year, and shall accumulate with the unused amount of such leave carried forward each pay period. Unpaid time does not earn sick leave.
 2. Sick leave may be taken any time after accrual, subject to the terms set forth in the district's sick leave policy.
 3. An employee who resigns, is dismissed, or separated from district employment may not be paid for unused sick leave, but the estate of a district employee who dies while employed by the district shall be paid one-half of the employee's unused sick leave, or for 80 hours of sick leave, whichever is less.
- J. Employee Vacations. All full time regular employees are entitled to vacation leave. Such entitlement is calculated on 26 pay periods per year in accordance with the following schedule:

<u>Years of District Service</u>	<u>Hours Earned Per Pay Period</u>	<u>Maximum Hours That Carry Over To Next Year</u>
First 2 years	3.23	168
2 to under 5 years	3.69	288
5 to under 10 years	4.15	324
10 to under 15 years	4.61	360
15 to under 20 years	5.53	432
20 to under 25 years	6.46	504
25 to under 30 years	7.38	576
30 or more years	8.30	647

Vacation with pay may not be granted until the employee has had continuous employment with the district for six months, although credit will be earned during that period. The chief appraiser may authorize additional unpaid vacation leave as a supplement to vacation with pay. An employee who resigns, is dismissed, or separated from district employment is entitled to be paid for all vacation time duly accrued at the time of separation, provided the employee has had continuous employment with the district for six months. For an employee who has a break in service, total HCAD employment is calculated in the same manner as with longevity pay. After a one-year waiting period, the employee's prior service of whole years is included in the calculation of vacation hours.

- K. Emergency Leave. The chief appraiser may grant emergency leave of up to three working days to a full time regular employee because of a death of the employee's spouse, parent, step-parent, child, step-child, brother, sister, grandparent, grandchild, spouse's parent, or spouse's children. The chief appraiser may grant leave for any other purpose that justifies emergency leave.
- L. Other Paid Leaves. Full time regular employees of the district are entitled to paid leaves for holidays, military duty, and jury duty in accordance with the district's policy on such leaves.

APPRAISAL REVIEW BOARD PROVISIONS

The Appraisal Review Board of Harris County (ARB) is authorized by Section 6.41 of the Texas Property Tax Code as an entity separate from the Harris County Appraisal District. The Code contains provisions about the separation of the two entities, and requires the board of directors to fund certain activities of the appraisal review board. ARB members are not employees of the district and are not eligible for appointment to the ARB if ever employed by the district. Other restrictions apply.

A. Appraisal Review Board Member Per Diem and Duties and Per Diem of ARB Officers.

1. ARB members are compensated at a flat per diem rate for each day of service on the appraisal review board that equals or exceeds eight hours, exclusive of lunch. The per diem rate for such members shall be paid as follows:

<u>Term of Service on the Board</u>	<u>Per Diem</u>
First Term	\$162 per day
Second Term	\$180 per day
Third and Subsequent Terms	\$198 per day

The board of directors may provide a per diem of up to \$205 per day for the chairman of the ARB. Service shall mean sitting as a member of a panel, participating at a meeting of the full board, or attending training required by law or approved by the board of directors. The board of directors may provide that service for an officer or member of the ARB includes such other activities as the board may prescribe. The chairman of the appraisal review board determines panel and training schedules for ARB members in consultation with the ARB administrator.

2. A member must serve for a minimum of eight hours, exclusive of lunch, to receive the full per diem. This is not intended to imply that member service is limited to 8 hours in a day. It is anticipated that members will serve the number of hours required to properly discharge their obligations. For service of two and one-quarter hours or less, a member shall receive a partial per diem payment of \$50. For service of more than two and one-quarter and less than eight hours, the member shall receive a payment calculated by multiplying the number of hours served by an hourly rate, which is computed by dividing the daily per diem rate by eight. Regardless of the number of hours served in excess of eight in a 24-hour period, a member will not be compensated at more than the maximum daily rate specified above.

B. Appropriation for ARB Member Per Diem and Related Items

1. Appropriation for ARB member per diem compensation is \$2,450,000.
2. Appropriation for ARB member coverage for Workers' Compensation Insurance is \$11,850.

3. Appropriation for the matching portion of OASDI and FICA, conditioned on a possible future determination that ARB members should be compensated as independent contractors, is \$189,720.
 4. There is no appropriation for unemployment insurance.
- C. Appropriation for Appraisal Review Board Attorney. The Appraisal Review Board shall use the services of the county attorney for legal counsel. In the event the county attorney is unable or declines to represent the board in a lawsuit to which the board is made a party, the board may employ and compensate private counsel, subject to a total appropriation of \$5,000.
 - D. Appropriation for Clerical Assistance. The appraisal office provides clerical assistance to the appraisal review board, including assisting the board with the scheduling and arranging of hearings. The appropriation for clerical assistance appears elsewhere in this budget.
 - E. Appropriation for Texas Comptroller ARB Training. The Property Tax Code provides for the Texas State Comptroller to provide mandatory training of ARB members. The amount of \$11,000 is appropriated for that purpose.
 - F. Appropriation for TALCB Licensed Appraiser Instruction. The ARB may contract with a Texas Appraiser Licensing and Certification Board (TALCB) licensed appraiser to instruct the members of the appraisal review board on valuation methodology if an appropriation for the instruction is provided. The amount of \$3,500 is appropriated for that purpose.
 - G. A member of the board of directors, the chief appraiser, or any other employee of the district may not communicate with a member of the appraisal review board about a course provided by the Comptroller or any other matter presented or discussed in training. In addition, the Property Tax Code prohibits communication with the appraisal review board by an officer or employee of a taxing unit or by an attorney who represents or whose law firm represents the appraisal district or a taxing unit that participates in the appraisal district.

2014 CAPITAL EXPENDITURES

ORG	ACCT	ITEM	QTY	NEW (N) REPL (R)	UNIT COST	TOTAL COST
8006	6501	Field devices	150	R	1,000	<u>150,000</u> \$150,000

2014 ESTIMATED COST ALLOCATION TO TAXING UNITS

The Harris County Appraisal District is funded by the taxing units it serves. As provided in Section 6.06(d), Tax Code, "(E)ach taxing unit participating in the district is allocated a portion of the budget equal to the proportion that the total dollar amount of property taxes imposed in the district by the unit for the tax year in which the budget proposal is prepared bears to the sum of the total dollar amount of property taxes imposed in the district by each participating unit for that year."

Section 6.06(d), Tax Code, requires "(E)ach taxing unit shall pay its allocation in four equal payments to be made at the end of each calendar quarter, and the first payment shall be made before January 1 of the year in which the budget takes effect." It has been the practice of the Harris County Appraisal District to invoice the taxing units for their quarterly payments approximately 45 days prior to the due date. Since the first quarter billing for 2014 will be prepared and delivered on or about November 15, 2012, and before the time some 2013 tax rates have been determined or received, the first quarter 2014 will be invoiced using incomplete information. The second quarter invoice will reflect the necessary corrections.

This estimate is prepared in June 2013 using 2012 tax rates and levies.

ESTIMATED 2014 COST ALLOCATION TO TAXING UNITS

JUR No.	TAXING UNIT	2012 TAXABLE VALUE @5/15/2013	2012 TOTAL TAX RATE	2012 TOTAL LEVY	2012 FROZEN LEVY LOSS	2012 ADJ. LEVY FOR CALC.	ALLOCATION RATIO	2014 BUDGET ALLOCATION
	<u>SCHOOL DISTRICTS</u>							
001	HOUSTON ISD	\$111,980,966,407	1.156700	1,295,283,838	33,149,937	1,262,133,901	0.1627090652	\$10,473,162
002	DEER PARK ISD	7,145,274,305	1.526700	109,086,903	702,000	108,384,903	0.0139725319	899,376
003	WALLER ISD	764,884,924	1.440000	11,014,343	256,174	10,758,169	0.0013868985	89,271
004	CYPRESS FAIRBANKS ISD	33,027,811,973	1.450000	478,903,274	15,712,742	463,190,532	0.0597126013	3,843,546
005	CROSBY ISD	1,327,488,663	1.440000	19,115,837	588,692	18,527,145	0.0023884426	153,738
006	CHANNELVIEW ISD	2,372,224,540	1.495600	35,478,990	563,093	34,915,897	0.0045012126	289,731
007	NEW CANEY ISD	55,576,202	1.540000	855,874	23,160	832,714	0.0001073501	6,910
008	ALIEF ISD	10,883,616,211	1.320000	143,663,734	719,403	142,944,331	0.0184277900	1,186,149
009	ALDINE ISD	13,715,992,881	1.328388	182,201,604	1,377,241	180,824,363	0.0233111265	1,500,477
012	NORTH FOREST ISD	1,544,478,441	1.443219	22,290,206	341,708	21,948,498	0.0028295093	182,128
015	GALENA PARK ISD	6,386,600,198	1.513400	96,654,807	265,123	96,389,684	0.0124261581	799,840
016	GOOSE CREEK ISD	6,175,973,723	1.332130	82,271,999	1,245,592	81,026,407	0.0104455882	672,355
017	KLEIN ISD	13,029,571,485	1.440000	187,625,829	2,665,069	184,960,760	0.0238443737	1,534,801
018	HUMBLE ISD	10,862,808,795	1.520000	165,114,694	3,377,869	161,736,825	0.0208504404	1,342,089
019	KATY ISD	12,727,328,193	1.526600	194,295,392	2,232,334	192,063,058	0.0247599724	1,593,735
020	LA PORTE ISD	6,208,729,372	1.330000	82,576,101	253,986	82,322,115	0.0106126254	683,107
021	PASADENA ISD	9,912,695,526	1.350000	133,821,390	2,168,485	131,652,905	0.0169721462	1,092,453
023	SHELDON ISD	4,317,584,357	1.430000	61,741,456	83,602	61,657,854	0.0079486747	511,636
024	SPRING ISD	7,236,411,795	1.570000	113,611,665	905,336	112,706,329	0.0145296323	935,235
025	SPRING BRANCH ISD	19,688,960,888	1.394500	274,562,560	14,771,682	259,790,878	0.0334911620	2,155,739
026	TOMBALL ISD	5,638,945,114	1.360000	76,689,654	1,126,947	75,562,707	0.0097412306	627,018
027	CLEAR CREEK ISD	10,609,175,011	1.360000	144,284,780	2,825,293	141,459,487	0.0182363701	1,173,828
028	DAYTON ISD	2,858,010	1.208000	34,525	737	33,788	0.0000043558	280
029	PEARLAND ISD	125,973,916	1.419400	1,788,074	105,289	1,682,785	0.0002169377	13,964
030	HUFFMAN ISD	817,397,962	1.445000	11,811,401	333,036	11,478,365	0.0014797432	95,247
031	STAFFORD MSD	6,388,874	1.250000	79,861	1,536	78,325	0.0000100973	650
	<u>COUNTY-WIDE UNITES</u>							
040	HARRIS COUNTY	290,354,409,481	0.400210	1,162,027,382	0	1,162,027,382	0.1498037482	9,642,480
041	HARRIS COUNTY FLOOD CONTROL	280,177,355,166	0.028090	78,701,819	0	78,701,819	0.0101459119	653,066
042	PORT OF HOUSTON AUTHORITY	280,141,234,148	0.019520	54,683,569	0	54,683,569	0.0070495788	453,763
043	HARRIS COUNTY HOSPITAL DIST	280,179,072,506	0.182160	510,374,198	0	510,374,198	0.0657953238	4,235,075
044	HARRIS COUNTY DPT OF EDUCATION	290,499,247,476	0.006617	19,222,335	0	19,222,335	0.0024780637	159,507
	<u>COLLEGE DISTRICTS</u>							
045	LONE STAR COLLEGE SYSTEM DISTRICT	91,255,987,529	0.119800	109,324,673	319,614	109,005,059	0.0140524799	904,522
046	LEE JR COLLEGE DISTRICT	6,078,338,365	0.241000	14,648,795	0	14,648,795	0.0018884619	121,555
047	SAN JACINTO COMMUNITY COLLEGE DISTRICT	39,414,291,564	0.185602	73,153,713	0	73,153,713	0.0094306731	607,028
048	HOUSTON COMMUNITY COLLEGE SYSTEM	127,964,741,799	0.097173	124,347,179	0	124,347,179	0.0160303223	1,031,830
	<u>CITIES</u>							

ESTIMATED 2014 COST ALLOCATION TO TAXING UNITS

JUR No.	TAXING UNIT	2012 TAXABLE VALUE @5/15/2013	2012 TOTAL TAX RATE	2012 TOTAL LEVY	2012 FROZEN LEVY LOSS	2012 ADJ. LEVY FOR CALC.	ALLOCATION RATIO	2014 BUDGET ALLOCATION
051	CITY OF BAYTOWN	2,349,836,003	0.822030	19,316,357	0	19,316,357	0.0024901846	160,287
052	CITY OF BELLAIRE	3,363,163,358	0.399900	13,449,290	0	13,449,290	0.0017338267	111,602
053	CITY OF BUNKER VILLAGE	1,431,408,889	0.297855	4,263,523	0	4,263,523	0.0005496357	35,379
054	CITY OF DEER PARK	1,821,860,687	0.720000	13,117,397	0	13,117,397	0.0016910404	108,848
056	CITY OF EL LAGO	183,441,717	0.613300	1,125,048	0	1,125,048	0.0001450365	9,336
058	CITY OF FRIENDSWOOD	478,191,437	0.597000	2,854,803	0	2,854,803	0.0003680294	23,689
057	CITY OF GALENA PARK	342,270,040	1.057450	3,619,335	0	3,619,335	0.0004665896	30,033
055	CITY OF HEDWIG VILLAGE	697,420,309	0.217338	1,515,759	0	1,515,759	0.0001954054	12,578
060	CITY OF HILSHIRE VILLAGE	137,027,686	0.605581	829,814	0	829,814	0.0001069762	6,886
061	CITY OF HOUSTON	151,320,250,621	0.638750	966,558,101	0	966,558,101	0.1246046596	8,020,480
062	CITY OF HUMBLE	1,293,719,838	0.200000	2,587,440	0	2,587,440	0.0003335620	21,471
065	CITY OF HUNTERS CREEK VILLAGE	1,925,034,866	0.190000	3,657,566	0	3,657,566	0.0004715182	30,350
066	CITY OF JACINTO CITY	377,535,536	0.766120	2,892,375	0	2,892,375	0.0003728730	24,001
070	CITY OF JERSEY VILLAGE	819,829,329	0.742500	6,087,233	0	6,087,233	0.0007847408	50,512
063	CITY OF KATY	537,316,623	0.586720	3,152,544	0	3,152,544	0.0004064129	26,160
071	CITY OF LA PORTE	2,346,271,553	0.710000	16,658,528	0	16,658,528	0.0021475483	138,232
067	CITY OF LEAGUE CITY	88,700,406	0.597000	529,541	0	529,541	0.0000682662	4,394
064	CITY OF MISSOURI CITY	188,891,463	0.544800	1,029,081	0	1,029,081	0.0001326649	8,539
072	CITY OF MORGANS POINT	175,672,836	0.646000	1,134,847	0	1,134,847	0.0001462998	9,417
073	CITY OF NASSAU BAY	466,971,876	0.732120	3,418,794	0	3,418,794	0.0004407367	28,369
074	CITY OF PASADENA	6,060,273,968	0.591593	35,852,157	179,453	35,672,704	0.0045987770	296,011
059	CITY OF PEARLAND	453,258,785	0.705100	3,195,928	0	3,195,928	0.0004120058	26,520
075	CITY OF PINEY POINT VILLAGE	1,737,046,839	0.215140	3,737,083	0	3,737,083	0.0004817692	31,010
076	CITY OF SEABROOK	859,922,234	0.665232	5,720,478	73,618	5,646,860	0.0007279697	46,858
077	CITY OF SHOREACRES	96,617,116	0.844381	815,817	0	815,817	0.0001051717	6,770
078	CITY OF SOUTH HOUSTON	495,667,172	0.708253	3,510,578	28,486	3,482,092	0.0004488969	28,894
079	CITY OF SOUTHSIDE PLACE	516,117,354	0.367833	1,898,450	0	1,898,450	0.0002447403	15,753
080	CITY OF SPRING VALLEY	704,780,251	0.539760	3,804,122	0	3,804,122	0.0004904116	31,567
082	CITY OF TAYLOR LAKE VILLAGE	338,670,489	0.348600	1,180,605	0	1,180,605	0.0001521987	9,797
083	CITY OF TOMBALL	1,376,894,534	0.341455	4,701,475	0	4,701,475	0.0006060946	39,013
086	CITY OF WALLER	56,111,586	0.536900	301,263	0	301,263	0.0000388376	2,500
084	CITY OF WEBSTER	1,401,908,814	0.285280	3,999,365	4,686	3,994,679	0.0005149775	33,148
085	CITY OF WEST UNIVERSITY PLACE	4,215,919,949	0.374110	15,772,178	0	15,772,178	0.0020332837	130,877
	SPECIAL DISTRICTS							
101	ADDICKS UD	185,664,508	0.655000	1,216,103	0	1,216,103	0.0001567750	10,091
110	BAKER ROAD MUD	196,782,964	0.500000	983,915	0	983,915	0.0001268422	8,165
111	BAMMEL UD	117,187,779	0.445000	521,486	0	521,486	0.0000672278	4,327
112	BARKER CYPRESS MUD	220,599,348	0.950000	2,095,694	0	2,095,694	0.0002701682	17,390
124	BAYBROOK MUD	190,580,577	1.110000	2,115,444	0	2,115,444	0.0002727143	17,554

ESTIMATED 2014 COST ALLOCATION TO TAXING UNITS

JUR No.	TAXING UNIT	2012 TAXABLE VALUE @5/15/2013	2012 TOTAL TAX RATE	2012 TOTAL LEVY	2012 FROZEN LEVY LOSS	2012 ADJ. LEVY FOR CALC.	ALLOCATION RATIO	2014 BUDGET ALLOCATION
116	BEECHNUT MUD	63,111,295	0.850000	536,446	0	536,446	0.0000691564	4,451
117	BILMA PUD	350,572,986	0.590000	2,068,381	0	2,068,381	0.0002666471	17,163
118	BISSONNET MUD	254,594,797	0.630000	1,603,947	0	1,603,947	0.0002067742	13,310
253	BRAZORIA COUNTY MUD 18	168,474,578	0.530000	892,915	0	892,915	0.0001151109	7,409
703	BRAZORIA COUNTY MUD 28	387,880	0.820000	3,181	0	3,181	0.0000004101	26
121	BRIDGESTONE MUD	838,082,453	0.750000	6,285,618	0	6,285,618	0.0008103158	52,158
153	CAMFIELD MUD	12,840,045	0.500000	64,200	0	64,200	0.0000082764	533
134	CASTLEWOOD MUD	121,520,936	0.850000	1,032,928	0	1,032,928	0.0001331608	8,571
135	CEDAR BAYOU PARK UD	22,173,067	0.100000	22,173	0	22,173	0.0000028585	184
136	CHARTERWOOD MUD	267,765,483	0.640000	1,713,699	0	1,713,699	0.0002209230	14,220
137	CHELFORD CITY MUD	96,468,637	0.430000	414,815	0	414,815	0.0000534762	3,442
138	CHELFORD ONE MUD	140,821,774	0.565000	795,643	0	795,643	0.0001025710	6,602
139	CHIMNEY HILL MUD	224,102,077	0.880000	1,972,098	0	1,972,098	0.0002542347	16,364
140	CIMARRON MUD	421,118,330	0.570000	2,400,374	0	2,400,374	0.0003094463	19,918
911	CINCO MUD 3	21,880,304	0.460000	100,649	0	100,649	0.0000129753	835
913	CINCO MUD 6	84,510,374	0.480000	405,650	0	405,650	0.0000522947	3,366
914	CINCO MUD 9	118,962,442	0.595000	707,827	0	707,827	0.0000912501	5,874
141	CLAY ROAD MUD	124,151,560	0.900000	1,117,364	0	1,117,364	0.0001440459	9,272
313	CLEAR BROOK CITY MUD	661,958,774	0.670000	4,435,124	0	4,435,124	0.0005717578	36,803
142	CLEAR LAKE CITY WATER AUTHORITY	4,193,428,537	0.280000	11,741,600	0	11,741,600	0.0015136783	97,432
131	CNP UTILITY DISTRICT	445,168,325	0.360000	1,602,606	0	1,602,606	0.0002066013	13,298
145	CORNERSTONE MUD	260,226,624	0.360000	936,816	0	936,816	0.0001207704	7,774
146	CROSBY MUD	209,567,001	0.570000	1,194,532	0	1,194,532	0.0001539941	9,912
147	CY - CHAMP PUD	318,139,754	0.510000	1,622,513	0	1,622,513	0.0002091676	13,464
148	CYPRESS CREEK UD	142,951,796	0.180000	257,313	0	257,313	0.0000331717	2,135
149	CYPRESS FOREST PUD	549,232,198	0.324000	1,779,512	0	1,779,512	0.0002294073	14,766
150	CYPRESS HILL MUD 1	459,825,061	0.960000	4,414,321	0	4,414,321	0.0005690759	36,630
151	CYPRESS KLEIN UD	203,981,952	0.240000	489,557	0	489,557	0.0000631117	4,062
152	CYPRESSWOOD UD	125,244,091	0.370000	463,403	0	463,403	0.0000597400	3,845
162	DOWDELL PUD	165,045,926	0.920000	1,518,423	0	1,518,423	0.0001957488	12,600
163	EL DORADO UD	80,205,746	0.580000	465,193	0	465,193	0.0000599708	3,860
164	EMERALD FOREST UD	259,260,063	0.690000	1,788,894	0	1,788,894	0.0002306168	14,844
165	ENCANTO REAL UD	46,774,120	0.987500	461,894	0	461,894	0.0000595455	3,833
171	FALLBROOK UD	187,664,313	0.367000	688,728	0	688,728	0.0000887880	5,715
172	FAULKEY GULLY MUD	455,679,728	0.526000	2,396,875	0	2,396,875	0.0003089952	19,889
174	FOREST HILLS MUD	50,460,391	1.360000	686,261	0	686,261	0.0000884699	5,695
662	FORT BEND COUNTY MUD 30	232,644	1.000000	2,326	0	2,326	0.0000002999	19
916	FORT BEND WCID 2	23,106,299	0.180000	41,591	0	41,591	0.0000053617	345
175	FOUNTAINHEAD MUD	183,653,304	0.670000	1,230,477	0	1,230,477	0.0001586280	10,210

ESTIMATED 2014 COST ALLOCATION TO TAXING UNITS

JUR No.	TAXING UNIT	2012 TAXABLE VALUE @5/15/2013	2012 TOTAL TAX RATE	2012 TOTAL LEVY	2012 FROZEN LEVY LOSS	2012 ADJ. LEVY FOR CALC.	ALLOCATION RATIO	2014 BUDGET ALLOCATION
176	FRY ROAD MUD	210,860,373	0.500000	1,054,302	0	1,054,302	0.0001359162	8,749
182	GRANT ROAD PUD	184,644,400	0.680000	1,255,582	0	1,255,582	0.0001618644	10,419
186	GREENS PARKWAY MUD	425,531,907	0.720000	3,063,830	0	3,063,830	0.0003949763	25,424
185	GREENS TRAIL MUD	205,013,405	0.260000	533,035	0	533,035	0.0000687167	4,423
183	GREENWOOD UD	59,687,019	1.075000	641,635	0	641,635	0.0000827169	5,324
671	HARRIS COUNTY ESD 1	8,662,148,225	0.100000	8,662,148	0	8,662,148	0.0011166882	71,878
672	HARRIS COUNTY ESD 2	3,948,587,025	0.030000	1,184,576	0	1,184,576	0.0001527106	9,830
673	HARRIS COUNTY ESD 3	1,075,048,342	0.060000	645,029	0	645,029	0.0000831545	5,352
674	HARRIS COUNTY ESD 4	700,211,784	0.100000	700,212	0	700,212	0.0000902684	5,810
675	HARRIS COUNTY ESD 5	1,183,692,368	0.025000	295,923	0	295,923	0.0000381492	2,456
676	HARRIS COUNTY ESD 6	2,629,738,035	0.009700	255,085	0	255,085	0.0000328845	2,117
550	HARRIS COUNTY ESD 7	6,355,940,357	0.082400	5,237,295	0	5,237,295	0.0006751703	43,459
679	HARRIS COUNTY ESD 8	1,562,982,453	0.050000	781,491	0	781,491	0.0001007466	6,485
633	HARRIS COUNTY ESD 9	26,635,981,563	0.060000	15,981,589	0	15,981,589	0.0020602801	132,615
641	HARRIS COUNTY ESD 10	2,266,847,634	0.100000	2,266,848	0	2,266,848	0.0002922326	18,810
666	HARRIS COUNTY ESD 11	28,193,881,676	0.030000	8,458,165	0	8,458,165	0.0010903915	70,186
668	HARRIS COUNTY ESD 12	2,596,290,661	0.023570	611,946	0	611,946	0.0000788895	5,078
634	HARRIS COUNTY ESD 13	4,952,006,272	0.090000	4,456,806	0	4,456,806	0.0005745529	36,982
640	HARRIS COUNTY ESD 14	486,840,641	0.050000	243,420	0	243,420	0.0000313807	2,020
665	HARRIS COUNTY ESD 15	462,161,403	0.050000	231,081	0	231,081	0.0000297900	1,918
635	HARRIS COUNTY ESD 16	9,478,924,298	0.050000	4,739,462	0	4,739,462	0.0006109918	39,328
647	HARRIS COUNTY ESD 17	2,814,889,633	0.100000	2,814,890	0	2,814,890	0.0003628839	23,358
649	HARRIS COUNTY ESD 19	351,101,045	0.030000	105,330	0	105,330	0.0000135787	874
636	HARRIS COUNTY ESD 20	2,854,889,981	0.100000	2,854,890	0	2,854,890	0.0003680406	23,690
648	HARRIS COUNTY ESD 21	1,070,567,132	0.050000	535,284	0	535,284	0.0000690066	4,442
639	HARRIS COUNTY ESD 24	3,366,205,877	0.100000	3,366,206	0	3,366,206	0.0004339573	27,933
642	HARRIS COUNTY ESD 25	1,187,210,436	0.100000	1,187,210	0	1,187,210	0.0001530502	9,851
637	HARRIS COUNTY ESD 28	2,317,963,897	0.100000	2,317,964	0	2,317,964	0.0002988223	19,234
645	HARRIS COUNTY ESD 29	2,212,895,125	0.100000	2,212,895	0	2,212,895	0.0002852772	18,363
631	HARRIS COUNTY ESD 46	3,671,541,312	0.080000	2,937,233	0	2,937,233	0.0003786559	24,373
638	HARRIS COUNTY ESD 47	2,009,286,709	0.100000	2,009,287	0	2,009,287	0.0002590289	16,673
643	HARRIS COUNTY ESD 48	6,179,754,183	0.090500	5,592,678	0	5,592,678	0.0007209848	46,408
667	HARRIS COUNTY ESD 50	3,566,613,696	0.050000	1,783,307	0	1,783,307	0.0002298965	14,798
670	HARRIS COUNTY ESD 60	3,920,417,906	0.050000	1,960,209	0	1,960,209	0.0002527020	16,266
669	HARRIS COUNTY ESD 80	1,357,467,750	0.046260	627,965	0	627,965	0.0000809546	5,211
206	HARRIS COUNTY FWSD 6	506,052,907	0.250000	1,265,132	0	1,265,132	0.0001630956	10,498
200	HARRIS COUNTY FWSD 1A	33,472,794	0.550000	184,100	0	184,100	0.0000237334	1,528
227	HARRIS COUNTY FWSD 27	50,141,570	0.735000	368,541	0	368,541	0.0000475108	3,058
247	HARRIS COUNTY FWSD 47	83,126,415	0.930000	773,076	0	773,076	0.0000996617	6,415

ESTIMATED 2014 COST ALLOCATION TO TAXING UNITS

JUR No.	TAXING UNIT	2012 TAXABLE VALUE @5/15/2013	2012 TOTAL TAX RATE	2012 TOTAL LEVY	2012 FROZEN LEVY LOSS	2012 ADJ. LEVY FOR CALC.	ALLOCATION RATIO	2014 BUDGET ALLOCATION
251	HARRIS COUNTY FWSD 51	377,686,909	0.345000	1,303,020	0	1,303,020	0.0001679799	10,812
258	HARRIS COUNTY FWSD 58	89,725,797	0.580000	520,410	0	520,410	0.0000670891	4,318
261	HARRIS COUNTY FWSD 61	737,046,084	0.370000	2,727,071	0	2,727,071	0.0003515627	22,629
264	HARRIS COUNTY ID 1	3,685,630,647	0.143500	5,288,880	0	5,288,880	0.0006818205	43,887
850	HARRIS COUNTY ID 3	1,617,219,660	0.150000	2,425,829	0	2,425,829	0.0003127278	20,129
178	HARRIS COUNTY ID 18	45,343,429	1.500000	680,151	0	680,151	0.0000876822	5,644
301	HARRIS COUNTY MUD 1	333,657,025	1.030000	3,436,667	0	3,436,667	0.0004430408	28,517
305	HARRIS COUNTY MUD 5	114,630,366	1.380000	1,581,899	0	1,581,899	0.0002039319	13,127
306	HARRIS COUNTY MUD 6	104,789,052	0.650000	681,129	0	681,129	0.0000878083	5,652
308	HARRIS COUNTY MUD 8	126,610,474	0.680000	860,951	0	860,951	0.0001109902	7,144
311	HARRIS COUNTY MUD 11	107,131,401	0.940000	1,007,035	0	1,007,035	0.0001298228	8,356
316	HARRIS COUNTY MUD 16	123,486,466	0.720000	889,103	0	889,103	0.0001146195	7,378
318	HARRIS COUNTY MUD 18	209,883,453	0.400000	839,534	0	839,534	0.0001082292	6,966
323	HARRIS COUNTY MUD 23	120,736,749	0.480000	579,536	0	579,536	0.0000747114	4,809
324	HARRIS COUNTY MUD 24	471,334,966	0.600000	2,828,010	0	2,828,010	0.0003645753	23,467
325	HARRIS COUNTY MUD 25	36,667,689	0.860000	315,342	0	315,342	0.0000406526	2,617
326	HARRIS COUNTY MUD 26	362,055,900	0.840000	3,041,270	0	3,041,270	0.0003920679	25,236
333	HARRIS COUNTY MUD 33	139,290,917	0.970000	1,351,122	0	1,351,122	0.0001741810	11,212
336	HARRIS COUNTY MUD 36	308,680,054	0.250000	771,700	0	771,700	0.0000994844	6,404
343	HARRIS COUNTY MUD 43	108,050,177	0.675000	729,339	0	729,339	0.0000940234	6,052
344	HARRIS COUNTY MUD 44	119,198,980	0.400000	476,796	0	476,796	0.0000614666	3,956
346	HARRIS COUNTY MUD 46	166,341,185	0.540000	898,242	0	898,242	0.0001157976	7,454
348	HARRIS COUNTY MUD 48	25,953,505	0.500000	129,768	0	129,768	0.0000167292	1,077
349	HARRIS COUNTY MUD 49	192,845,322	1.000000	1,928,453	0	1,928,453	0.0002486082	16,002
350	HARRIS COUNTY MUD 50	52,269,228	1.120000	585,415	0	585,415	0.0000754693	4,858
353	HARRIS COUNTY MUD 53	522,663,217	0.910000	4,756,235	0	4,756,235	0.0006131541	39,467
355	HARRIS COUNTY MUD 55	638,102,428	0.400000	2,552,410	0	2,552,410	0.0003290461	21,180
358	HARRIS COUNTY MUD 58	44,192,113	0.990000	437,502	0	437,502	0.0000564009	3,630
361	HARRIS COUNTY MUD 61	120,791,994	0.590000	712,673	0	712,673	0.0000918748	5,914
362	HARRIS COUNTY MUD 62	74,424,158	0.650000	483,757	0	483,757	0.0000623639	4,014
363	HARRIS COUNTY MUD 63	182,447,405	0.700000	1,277,132	0	1,277,132	0.0001646426	10,598
364	HARRIS COUNTY MUD 64	187,415,225	0.710000	1,330,648	0	1,330,648	0.0001715416	11,042
365	HARRIS COUNTY MUD 65	143,895,483	0.977000	1,405,859	0	1,405,859	0.0001812375	11,666
369	HARRIS COUNTY MUD 69	124,965,866	0.400000	499,863	0	499,863	0.0000644403	4,148
370	HARRIS COUNTY MUD 70	233,503,268	0.890000	2,078,179	0	2,078,179	0.0002679102	17,245
371	HARRIS COUNTY MUD 71	388,918,390	1.100000	4,278,102	0	4,278,102	0.0005515152	35,500
381	HARRIS COUNTY MUD 81	382,329,790	0.370000	1,414,620	0	1,414,620	0.0001823669	11,738
382	HARRIS COUNTY MUD 82	311,795,676	0.830000	2,587,904	0	2,587,904	0.0003336218	21,474
386	HARRIS COUNTY MUD 86	164,798,054	0.850000	1,400,783	0	1,400,783	0.0001805831	11,624

ESTIMATED 2014 COST ALLOCATION TO TAXING UNITS

JUR No.	TAXING UNIT	2012 TAXABLE VALUE @5/15/2013	2012 TOTAL TAX RATE	2012 TOTAL LEVY	2012 FROZEN LEVY LOSS	2012 ADJ. LEVY FOR CALC.	ALLOCATION RATIO	2014 BUDGET ALLOCATION
396	HARRIS COUNTY MUD 96	146,444,731	1.465000	2,145,415	0	2,145,415	0.0002765780	17,803
402	HARRIS COUNTY MUD 102	353,369,018	0.700000	2,473,583	0	2,473,583	0.0003188841	20,526
404	HARRIS COUNTY MUD 104	213,042,804	0.550000	1,171,735	0	1,171,735	0.0001510552	9,723
405	HARRIS COUNTY MUD 105	204,397,463	0.930000	1,900,896	0	1,900,896	0.0002450556	15,774
406	HARRIS COUNTY MUD 106	243,312,684	0.930000	2,262,808	0	2,262,808	0.0002917118	18,777
409	HARRIS COUNTY MUD 109	398,884,587	0.520000	2,074,200	0	2,074,200	0.0002673973	17,212
418	HARRIS COUNTY MUD 118	137,414,943	0.720000	989,388	0	989,388	0.0001275478	8,210
419	HARRIS COUNTY MUD 119	166,916,773	0.470000	784,509	0	784,509	0.0001011356	6,510
420	HARRIS COUNTY MUD 120	325,031,786	0.700000	2,275,223	0	2,275,223	0.0002933123	18,880
422	HARRIS COUNTY MUD 122	66,071,816	0.840000	555,003	0	555,003	0.0000715487	4,605
427	HARRIS COUNTY MUD 127	149,520,855	0.900000	1,345,688	0	1,345,688	0.0001734805	11,166
430	HARRIS COUNTY MUD 130	351,605,743	0.670000	2,355,758	0	2,355,758	0.0003036945	19,548
432	HARRIS COUNTY MUD 132	459,458,803	0.155000	712,161	0	712,161	0.0000918088	5,909
436	HARRIS COUNTY MUD 136	184,131,556	0.215000	395,883	0	395,883	0.0000510356	3,285
444	HARRIS COUNTY MUD 144	108,255,826	0.650000	703,663	0	703,663	0.0000907133	5,839
447	HARRIS COUNTY MUD 147	78,057,337	0.940000	733,739	0	733,739	0.0000945906	6,089
448	HARRIS COUNTY MUD 148	87,805,170	1.090000	957,076	0	957,076	0.0001233823	7,942
449	HARRIS COUNTY MUD 149	126,317,778	0.660000	833,697	0	833,697	0.0001074768	6,918
450	HARRIS COUNTY MUD 150	189,422,930	0.980000	1,856,345	0	1,856,345	0.0002393123	15,404
451	HARRIS COUNTY MUD 151	396,989,610	0.450000	1,786,453	0	1,786,453	0.0002303021	14,824
452	HARRIS COUNTY MUD 152	368,071,110	0.370000	1,361,863	0	1,361,863	0.0001755657	11,301
453	HARRIS COUNTY MUD 153	457,390,824	0.460000	2,103,998	0	2,103,998	0.0002712387	17,459
454	HARRIS COUNTY MUD 154	210,541,899	0.870000	1,831,715	0	1,831,715	0.0002361371	15,200
455	HARRIS COUNTY MUD 155	96,003,935	0.885000	849,635	0	849,635	0.0001095314	7,050
456	HARRIS COUNTY MUD 156	146,751,614	0.970000	1,423,491	0	1,423,491	0.0001835106	11,812
457	HARRIS COUNTY MUD 157	386,601,991	0.845000	3,266,787	0	3,266,787	0.0004211406	27,108
458	HARRIS COUNTY MUD 158	267,726,157	0.420000	1,124,450	0	1,124,450	0.0001449594	9,331
462	HARRIS COUNTY MUD 162	126,289,004	0.566500	715,427	0	715,427	0.0000922299	5,937
465	HARRIS COUNTY MUD 165	529,540,518	1.320000	6,989,935	0	6,989,935	0.0009011134	58,002
466	HARRIS COUNTY MUD 166	130,736,101	0.930000	1,215,846	0	1,215,846	0.0001567418	10,089
467	HARRIS COUNTY MUD 167	309,534,398	1.250000	3,869,180	0	3,869,180	0.0004987986	32,106
468	HARRIS COUNTY MUD 168	355,113,813	0.600000	2,130,683	0	2,130,683	0.0002746788	17,680
470	HARRIS COUNTY MUD 170	143,320,530	0.300000	429,962	0	429,962	0.0000554289	3,568
472	HARRIS COUNTY MUD 172	249,389,347	0.890000	2,219,565	0	2,219,565	0.0002861371	18,418
473	HARRIS COUNTY MUD 173	252,204,987	0.690000	1,740,214	0	1,740,214	0.0002243412	14,440
479	HARRIS COUNTY MUD 179	129,446,211	0.300000	388,339	0	388,339	0.0000500631	3,222
480	HARRIS COUNTY MUD 180	130,467,403	0.980000	1,278,581	0	1,278,581	0.0001648294	10,610
482	HARRIS COUNTY MUD 182	59,050,617	1.000000	590,506	0	590,506	0.0000761256	4,900
483	HARRIS COUNTY MUD 183	160,444,961	0.540000	866,403	0	866,403	0.0001116931	7,189

ESTIMATED 2014 COST ALLOCATION TO TAXING UNITS

JUR No.	TAXING UNIT	2012 TAXABLE VALUE @5/15/2013	2012 TOTAL TAX RATE	2012 TOTAL LEVY	2012 FROZEN LEVY LOSS	2012 ADJ. LEVY FOR CALC.	ALLOCATION RATIO	2014 BUDGET ALLOCATION
485	HARRIS COUNTY MUD 185	64,379,485	0.525000	337,992	0	337,992	0.0000435725	2,805
486	HARRIS COUNTY MUD 186	221,519,362	0.315000	697,786	0	697,786	0.0000899557	5,790
488	HARRIS COUNTY MUD 188	278,509,216	0.550000	1,531,801	0	1,531,801	0.0001974734	12,711
489	HARRIS COUNTY MUD 189	139,769,996	0.680000	950,436	0	950,436	0.0001225263	7,887
491	HARRIS COUNTY MUD 191	280,120,920	0.300000	840,363	0	840,363	0.0001083361	6,973
496	HARRIS COUNTY MUD 196	283,038,562	0.740000	2,094,485	0	2,094,485	0.0002700123	17,380
500	HARRIS COUNTY MUD 200	178,067,579	0.655000	1,166,343	0	1,166,343	0.0001503601	9,678
502	HARRIS COUNTY MUD 202	130,800,300	1.250000	1,635,004	0	1,635,004	0.0002107779	13,567
505	HARRIS COUNTY MUD 205	36,687,746	0.930000	341,196	0	341,196	0.0000439856	2,831
508	HARRIS COUNTY MUD 208	178,577,381	0.600000	1,071,464	0	1,071,464	0.0001381287	8,891
511	HARRIS COUNTY MUD 211	70,416,140	0.550000	387,289	0	387,289	0.0000499277	3,214
515	HARRIS COUNTY MUD 215	33,072,037	1.450000	479,545	0	479,545	0.0000618210	3,979
516	HARRIS COUNTY MUD 216	96,325,799	1.070000	1,030,686	0	1,030,686	0.0001328718	8,553
517	HARRIS COUNTY MUD 217	67,638,781	1.574000	1,064,634	0	1,064,634	0.0001372482	8,834
514	HARRIS COUNTY MUD 220	74,586,484	1.300000	969,624	0	969,624	0.0001249999	8,046
521	HARRIS COUNTY MUD 221	219,220,994	0.510000	1,118,027	0	1,118,027	0.0001441314	9,277
522	HARRIS COUNTY MUD 222	283,460,007	0.570000	1,615,722	0	1,615,722	0.0002082922	13,407
530	HARRIS COUNTY MUD 230	344,062,591	0.580000	1,995,563	0	1,995,563	0.0002572597	16,559
533	HARRIS COUNTY MUD 233	105,135,731	0.790000	830,572	0	830,572	0.0001070739	6,892
538	HARRIS COUNTY MUD 238	320,936,700	0.695000	2,230,510	0	2,230,510	0.0002875481	18,509
539	HARRIS COUNTY MUD 239	193,893,753	0.770000	1,492,982	0	1,492,982	0.0001924690	12,389
548	HARRIS COUNTY MUD 248	298,839,352	0.630000	1,882,688	0	1,882,688	0.0002427083	15,623
549	HARRIS COUNTY MUD 249	183,748,704	0.980000	1,800,737	0	1,800,737	0.0002321435	14,942
128	HARRIS COUNTY MUD 250	40,994,811	1.260000	516,535	0	516,535	0.0000665895	4,286
108	HARRIS COUNTY MUD 255	158,796,548	0.500000	793,983	0	793,983	0.0001023570	6,588
541	HARRIS COUNTY MUD 257	164,273,322	0.400000	657,093	0	657,093	0.0000847097	5,453
542	HARRIS COUNTY MUD 261	101,644,293	0.620000	630,195	0	630,195	0.0000812421	5,229
105	HARRIS COUNTY MUD 264	181,584,840	0.260000	472,121	0	472,121	0.0000608639	3,918
180	HARRIS COUNTY MUD 275	56,528,237	1.000000	565,282	0	565,282	0.0000728738	4,691
129	HARRIS COUNTY MUD 276	236,853,140	0.790000	1,871,140	0	1,871,140	0.0002412196	15,527
156	HARRIS COUNTY MUD 278	244,885,818	1.200000	2,938,630	0	2,938,630	0.0003788360	24,385
544	HARRIS COUNTY MUD 280	160,721,709	0.705000	1,133,088	0	1,133,088	0.0001460730	9,402
545	HARRIS COUNTY MUD 281	164,240,832	0.980000	1,609,560	0	1,609,560	0.0002074978	13,356
207	HARRIS COUNTY MUD 282	42,228,319	1.110000	468,734	0	468,734	0.0000604272	3,890
190	HARRIS COUNTY MUD 284	124,123,390	1.150000	1,427,419	0	1,427,419	0.0001840169	11,845
193	HARRIS COUNTY MUD 285	431,772,392	0.980000	4,231,369	0	4,231,369	0.0005454905	35,112
170	HARRIS COUNTY MUD 286	432,921,397	0.180000	779,259	0	779,259	0.0001004588	6,466
187	HARRIS COUNTY MUD 287	65,871,060	1.350000	889,259	0	889,259	0.0001146396	7,379
159	HARRIS COUNTY MUD 290	377,276,105	1.025000	3,867,080	0	3,867,080	0.0004985279	32,089

ESTIMATED 2014 COST ALLOCATION TO TAXING UNITS

JUR No.	TAXING UNIT	2012 TAXABLE VALUE @5/15/2013	2012 TOTAL TAX RATE	2012 TOTAL LEVY	2012 FROZEN LEVY LOSS	2012 ADJ. LEVY FOR CALC.	ALLOCATION RATIO	2014 BUDGET ALLOCATION
179	HARRIS COUNTY MUD 304	158,751,838	0.900000	1,428,767	0	1,428,767	0.0001841907	11,856
208	HARRIS COUNTY MUD 316	76,888,539	0.720000	553,597	0	553,597	0.0000713674	4,594
205	HARRIS COUNTY MUD 321	110,996,309	1.050000	1,165,461	0	1,165,461	0.0001502464	9,671
213	HARRIS COUNTY MUD 322	197,596,418	0.620000	1,225,098	0	1,225,098	0.0001579346	10,166
519	HARRIS COUNTY MUD 341	271,121,299	0.450000	1,220,046	0	1,220,046	0.0001572833	10,124
220	HARRIS COUNTY MUD 342	174,112,653	0.850000	1,479,958	0	1,479,958	0.0001907900	12,281
222	HARRIS COUNTY MUD 344	254,837,112	1.200000	3,058,045	0	3,058,045	0.0003942305	25,376
224	HARRIS COUNTY MUD 345	366,342,742	0.420000	1,538,640	0	1,538,640	0.0001983551	12,768
225	HARRIS COUNTY MUD 346	112,997,646	0.200000	225,995	0	225,995	0.0000291343	1,875
524	HARRIS COUNTY MUD 354	410,850,278	0.645000	2,649,984	0	2,649,984	0.0003416249	21,990
525	HARRIS COUNTY MUD 355	485,986,390	0.225000	1,093,469	0	1,093,469	0.0001409655	9,074
528	HARRIS COUNTY MUD 358	181,123,253	0.810000	1,467,098	0	1,467,098	0.0001891322	12,174
527	HARRIS COUNTY MUD 359	229,059,321	0.305000	698,631	0	698,631	0.0000900646	5,797
529	HARRIS COUNTY MUD 360	359,077,657	0.390000	1,400,403	0	1,400,403	0.0001805341	11,621
532	HARRIS COUNTY MUD 361	188,389,210	1.050000	1,978,087	0	1,978,087	0.0002550068	16,414
534	HARRIS COUNTY MUD 364	428,906,266	0.530000	2,273,203	0	2,273,203	0.0002930519	18,863
535	HARRIS COUNTY MUD 365	376,677,598	0.520000	1,958,724	0	1,958,724	0.0002525106	16,253
555	HARRIS COUNTY MUD 366	207,726,606	0.250000	519,317	0	519,317	0.0000669482	4,309
526	HARRIS COUNTY MUD 367	473,562,572	0.700000	3,314,938	0	3,314,938	0.0004273481	27,507
844	HARRIS COUNTY MUD 368	414,982,993	0.995000	4,129,081	0	4,129,081	0.0005323040	34,263
520	HARRIS COUNTY MUD 370	530,923,882	0.460000	2,442,250	0	2,442,250	0.0003148447	20,266
504	HARRIS COUNTY MUD 371	234,205,622	0.900000	2,107,851	0	2,107,851	0.0002717354	17,491
509	HARRIS COUNTY MUD 372	683,415,847	0.190000	1,298,490	0	1,298,490	0.0001673959	10,775
510	HARRIS COUNTY MUD 373	131,493,692	0.350000	460,228	0	460,228	0.0000593307	3,819
501	HARRIS COUNTY MUD 374	284,555,892	0.950000	2,703,281	0	2,703,281	0.0003484958	22,432
379	HARRIS COUNTY MUD 381	107,058,723	0.780000	835,058	0	835,058	0.0001076522	6,929
484	HARRIS COUNTY MUD 382	97,323,128	0.690000	671,530	0	671,530	0.0000865709	5,572
383	HARRIS COUNTY MUD 383	252,378,279	0.940000	2,372,356	0	2,372,356	0.0003058343	19,686
493	HARRIS COUNTY MUD 389	90,868,920	1.350000	1,226,730	0	1,226,730	0.0001581449	10,179
490	HARRIS COUNTY MUD 390	170,753,351	0.700000	1,195,273	0	1,195,273	0.0001540896	9,918
387	HARRIS COUNTY MUD 391	265,213,901	1.340000	3,553,866	0	3,553,866	0.0004581497	29,490
388	HARRIS COUNTY MUD 393	77,897,978	1.080000	841,298	0	841,298	0.0001084566	6,981
276	HARRIS COUNTY MUD 396	148,012,520	1.250000	1,850,157	0	1,850,157	0.0002385146	15,353
384	HARRIS COUNTY MUD 397	196,052,182	1.000000	1,960,522	0	1,960,522	0.0002527424	16,268
385	HARRIS COUNTY MUD 399	48,427,761	1.340000	648,932	0	648,932	0.0000836576	5,385
389	HARRIS COUNTY MUD 400	246,721,757	1.300000	3,207,383	0	3,207,383	0.0004134825	26,615
197	HARRIS COUNTY MUD 401	87,084,566	1.250000	1,088,557	0	1,088,557	0.0001403323	9,033
250	HARRIS COUNTY MUD 402	29,303,006	1.250000	366,288	0	366,288	0.0000472203	3,039
228	HARRIS COUNTY MUD 404	7,279,425	0.861250	62,694	0	62,694	0.0000080823	520

ESTIMATED 2014 COST ALLOCATION TO TAXING UNITS

JUR No.	TAXING UNIT	2012 TAXABLE VALUE @5/15/2013	2012 TOTAL TAX RATE	2012 TOTAL LEVY	2012 FROZEN LEVY LOSS	2012 ADJ. LEVY FOR CALC.	ALLOCATION RATIO	2014 BUDGET ALLOCATION
231	HARRIS COUNTY MUD 405	10,706,342	1.300000	139,182	0	139,182	0.0000179428	1,155
249	HARRIS COUNTY MUD 406	84,663,680	1.400000	1,185,292	0	1,185,292	0.0001528029	9,836
230	HARRIS COUNTY MUD 407	87,293,892	0.740000	645,975	0	645,975	0.0000832764	5,360
394	HARRIS COUNTY MUD 410	104,919,566	0.750000	786,897	0	786,897	0.0001014435	6,530
392	HARRIS COUNTY MUD 411	55,270,050	0.960000	530,592	0	530,592	0.0000684017	4,403
229	HARRIS COUNTY MUD 412	217,292,011	1.340000	2,911,713	0	2,911,713	0.0003753660	24,161
177	HARRIS COUNTY MUD 415	8,116,535	0.800000	64,932	0	64,932	0.0000083708	539
506	HARRIS COUNTY MUD 419	449,155,858	1.000000	4,491,559	0	4,491,559	0.0005790331	37,271
399	HARRIS COUNTY MUD 420	45,307,760	1.440000	652,432	0	652,432	0.0000841088	5,414
100	HARRIS COUNTY MUD 421	8,550,010	1.250000	106,875	0	106,875	0.0000137779	887
246	HARRIS COUNTY MUD 432	30,832,426	1.500000	462,486	0	462,486	0.0000596218	3,838
232	HARRIS COUNTY MUD 433	5,899,073	1.200000	70,789	0	70,789	0.0000091258	587
237	HARRIS COUNTY MUD 434	2,424,434	1.250000	30,305	0	30,305	0.0000039068	251
238	HARRIS COUNTY MUD 439	10,274,624	0.800000	82,197	0	82,197	0.0000105965	682
242	HARRIS COUNTY MUD 450	68,535,964	0.761250	521,730	0	521,730	0.0000672593	4,329
234	HARRIS COUNTY MUD 451	21,267,350	0.880000	187,153	0	187,153	0.0000241270	1,553
235	HARRIS COUNTY MUD 459	11,590,642	0.800000	92,725	0	92,725	0.0000119537	769
241	HARRIS COUNTY MUD 460	25,381,860	0.740000	187,826	0	187,826	0.0000242137	1,559
321	HARRIS COUNTY MUD 461	53,158,973	0.700000	372,113	0	372,113	0.0000479713	3,088
507	HARRIS COUNTY MUD 468	287,725,674	0.850000	2,445,668	0	2,445,668	0.0003152854	20,294
243	HARRIS COUNTY MUD 480	12,836,651	1.500000	192,550	0	192,550	0.0000248227	1,598
248	HARRIS COUNTY MUD 481	51,472,143	1.200000	617,666	0	617,666	0.0000796269	5,125
257	HARRIS COUNTY MUD 500	30,771,412	1.250000	384,643	0	384,643	0.0000495866	3,192
255	HARRIS COUNTY MUD 501	31,837,685	1.500000	477,565	0	477,565	0.0000615657	3,963
106	HARRIS COUNTY MUD 502	5,102,115	1.500000	76,532	0	76,532	0.0000098662	635
400	HARRIS COUNTY RID 1	76,708,977	0.300000	230,127	0	230,127	0.0000296670	1,910
556	HARRIS COUNTY UD 6	325,546,548	0.240000	781,312	0	781,312	0.0001007235	6,483
564	HARRIS COUNTY UD 14	206,532,583	0.889000	1,836,075	0	1,836,075	0.0002366992	15,236
565	HARRIS COUNTY UD 15	111,878,761	0.990000	1,107,600	0	1,107,600	0.0001427872	9,191
566	HARRIS COUNTY UD 16	101,117,391	1.500000	1,516,761	0	1,516,761	0.0001955345	12,586
601	HARRIS COUNTY WCID 1	241,681,316	0.230000	555,867	0	555,867	0.0000716601	4,613
602	HARRIS COUNTY WCID 21	331,371,719	0.366000	1,212,820	0	1,212,820	0.0001563517	10,064
603	HARRIS COUNTY WCID 36	275,464,768	0.310000	853,941	0	853,941	0.0001100865	7,086
604	HARRIS COUNTY WCID 50	195,240,888	0.182879	357,055	0	357,055	0.0000460300	2,963
605	HARRIS COUNTY WCID 70	74,403,346	0.780000	580,346	0	580,346	0.0000748158	4,816
606	HARRIS COUNTY WCID 74	89,960,198	1.030000	926,590	0	926,590	0.0001194521	7,689
607	HARRIS COUNTY WCID 75	52,909,994	0.520000	275,132	0	275,132	0.0000354689	2,283
609	HARRIS COUNTY WCID 84	127,536,695	1.087000	1,386,324	0	1,386,324	0.0001787191	11,504
610	HARRIS COUNTY WCID 89	237,760,120	1.390000	3,304,866	0	3,304,866	0.0004260496	27,424

ESTIMATED 2014 COST ALLOCATION TO TAXING UNITS

JUR No.	TAXING UNIT	2012 TAXABLE VALUE @5/15/2013	2012 TOTAL TAX RATE	2012 TOTAL LEVY	2012 FROZEN LEVY LOSS	2012 ADJ. LEVY FOR CALC.	ALLOCATION RATIO	2014 BUDGET ALLOCATION
611	HARRIS COUNTY WCID 91	102,087,347	0.360000	367,514	0	367,514	0.0000473784	3,050
612	HARRIS COUNTY WCID 92	155,718,723	0.150000	233,578	0	233,578	0.0000301119	1,938
613	HARRIS COUNTY WCID 96	567,201,075	0.960000	5,445,130	0	5,445,130	0.0007019636	45,184
622	HARRIS COUNTY WCID 109	436,729,653	0.250000	1,091,824	0	1,091,824	0.0001407534	9,060
623	HARRIS COUNTY WCID 110	518,331,745	0.540000	2,798,991	0	2,798,991	0.0003608343	23,226
624	HARRIS COUNTY WCID 113	62,172,503	0.891000	553,957	0	553,957	0.0000714138	4,597
625	HARRIS COUNTY WCID 114	342,097,331	0.300000	1,026,292	0	1,026,292	0.0001323053	8,516
626	HARRIS COUNTY WCID 116	251,646,742	0.100000	251,647	0	251,647	0.0000324413	2,088
627	HARRIS COUNTY WCID 119	378,009,620	0.590000	2,230,257	0	2,230,257	0.0002875155	18,507
628	HARRIS COUNTY WCID 132	100,689,767	0.440000	443,035	0	443,035	0.0000571142	3,676
629	HARRIS COUNTY WCID 133	103,393,690	0.990000	1,023,598	0	1,023,598	0.0001319580	8,494
630	HARRIS COUNTY WCID 136	56,604,708	0.830000	469,819	0	469,819	0.0000605671	3,899
632	HARRIS COUNTY WCID 145	923,937,049	0.069930	646,109	0	646,109	0.0000832937	5,361
614	HARRIS COUNTY WCID 155	935,766,888	0.200000	1,871,534	0	1,871,534	0.0002412704	15,530
616	HARRIS COUNTY WCID 156	146,078,895	0.400000	584,316	0	584,316	0.0000753276	4,849
617	HARRIS COUNTY WCID 157	467,251,776	0.500000	2,336,259	0	2,336,259	0.0003011808	19,386
600	HARRIS COUNTY WCID-FONDREN ROAD	66,274,888	0.580000	384,394	0	384,394	0.0000495545	3,190
395	HARRIS MONTGMRY CO MUD 386	883,020,512	0.940000	8,300,393	0	8,300,393	0.0010700522	68,876
650	HARRIS-FT BND CNTIES MUD 1	35,869,688	0.700000	251,088	0	251,088	0.0000323692	2,084
660	HARRIS-FT BND CNTIES MUD 3	137,707,816	1.240000	1,707,577	0	1,707,577	0.0002201337	14,169
910	HARRIS-FT BND CNTIES MUD 4	78,750,516	0.880000	693,005	0	693,005	0.0000893393	5,751
915	HARRIS-FT BND CNTIES MUD 5	7,145,254	0.710000	50,731	0	50,731	0.0000065400	421
677	HARRIS-FT BND ESD 100	1,922,955,788	0.090000	1,730,660	0	1,730,660	0.0002231095	14,361
651	HEATHERLOCH MUD	166,585,008	0.395000	658,011	0	658,011	0.0000848280	5,460
652	HORSEPEN BAYOU MUD	352,008,165	0.750000	2,640,061	0	2,640,061	0.0003403457	21,907
654	HUNTERS GLEN MUD	185,669,557	0.940000	1,745,294	0	1,745,294	0.0002249961	14,482
656	INTERSTATE MUD	384,813,291	0.420000	1,616,216	0	1,616,216	0.0002083559	13,411
657	INVERNESS FOREST ID	78,384,168	0.550000	431,113	0	431,113	0.0000555773	3,577
658	JACKRABBIT ROAD PUD	201,927,224	0.250000	504,818	0	504,818	0.0000650790	4,189
254	KINGS MANOR MUD	60,020,528	0.830000	498,170	0	498,170	0.0000642220	4,134
681	KINGSBRIDGE MUD	12,271,590	0.780000	95,718	0	95,718	0.0000123396	794
682	KIRKMONT MUD	73,662,504	0.540000	397,778	0	397,778	0.0000512799	3,301
683	KLEIN PUD	185,427,648	0.430000	797,339	0	797,339	0.0001027896	6,616
684	KLEINWOOD MUD	272,168,751	0.560000	1,524,145	0	1,524,145	0.0001964864	12,647
692	LAKE FOREST UD	232,378,314	0.250000	580,946	0	580,946	0.0000748931	4,821
691	LAKE MUD	149,346,525	0.700000	1,045,426	0	1,045,426	0.0001347720	8,675
693	LANGHAM CREEK UD	341,408,634	0.680000	2,321,579	0	2,321,579	0.0002992883	19,264
694	LONGHORN TOWN UD	172,999,491	0.630000	1,089,897	0	1,089,897	0.0001405050	9,044
695	LOUETTA NORTH PUD	260,248,006	0.360000	936,893	0	936,893	0.0001207804	7,774

ESTIMATED 2014 COST ALLOCATION TO TAXING UNITS

JUR No.	TAXING UNIT	2012 TAXABLE VALUE @5/15/2013	2012 TOTAL TAX RATE	2012 TOTAL LEVY	2012 FROZEN LEVY LOSS	2012 ADJ. LEVY FOR CALC.	ALLOCATION RATIO	2014 BUDGET ALLOCATION
696	LOUETTA ROAD UD	79,164,337	0.500000	395,822	0	395,822	0.0000510277	3,285
154	LOWER KIRBY PEARLAND MGMT DISTRICT	61,645,939	0.100000	61,646	0	61,646	0.0000079471	512
697	LUCE BAYOU PUD	31,914,199	1.060000	338,291	0	338,291	0.0000436111	2,807
701	MALCOMSON ROAD UD	442,270,356	0.530000	2,344,033	0	2,344,033	0.0003021830	19,451
702	MASON CREEK UD	420,592,558	0.346000	1,455,250	0	1,455,250	0.0001876048	12,076
704	MAYDE CREEK MUD	169,714,507	0.915000	1,552,888	0	1,552,888	0.0002001919	12,886
161	MEADOWHILL REGIONAL MUD	272,526,425	0.940000	2,561,748	0	2,561,748	0.0003302499	21,257
705	MEMORIAL HILLS UD	70,895,469	1.030000	730,223	0	730,223	0.0000941373	6,059
706	MEMORIAL MUD	319,102,497	0.540000	1,723,153	0	1,723,153	0.0002221417	14,299
707	MEMORIAL VILLAGES WATER AUTHORITY	3,629,840,281	0.040000	1,451,936	0	1,451,936	0.0001871776	12,048
709	MILLS ROAD MUD	175,497,724	0.920000	1,614,579	0	1,614,579	0.0002081448	13,398
710	MISSION BEND MUD 1	127,740,767	0.250000	319,352	0	319,352	0.0000411695	2,650
711	MISSION BEND MUD 2	254,642,645	0.850000	2,164,462	0	2,164,462	0.0002790335	17,961
712	MORTON ROAD MUD	111,508,876	0.840000	936,675	0	936,675	0.0001207523	7,773
714	MOUNT HOUSTON ROAD MUD	129,391,187	1.300000	1,682,085	0	1,682,085	0.0002168474	13,958
718	NEWPORT MUD	361,293,329	0.640000	2,312,277	0	2,312,277	0.0002980892	19,187
722	NORTH BELT UD	260,878,175	0.500000	1,304,391	0	1,304,391	0.0001681567	10,824
725	NORTH FOREST MUD	53,587,992	0.850000	455,498	0	455,498	0.0000587209	3,780
726	NORTH GREEN MUD	163,806,812	0.100000	163,807	0	163,807	0.0000211173	1,359
727	NORTH MISSION GLEN MUD	3,157,276	0.651100	20,557	0	20,557	0.0000026501	171
728	NORTH PARK PUD	168,049,182	0.430000	722,611	0	722,611	0.0000931560	5,996
721	NORTHAMPTON MUD	328,463,642	0.610000	2,003,628	0	2,003,628	0.0002582994	16,626
724	NORTHEAST HARRIS CNTY MUD 1	39,371,594	1.480000	582,700	0	582,700	0.0000751193	4,835
731	NORTHGATE CROSSING MUD 1	67,644,503	1.325000	896,290	0	896,290	0.0001155460	7,437
732	NORTHGATE CROSSING MUD 2	205,162,975	1.000000	2,051,630	0	2,051,630	0.0002644876	17,024
734	NORTHGATE CROSSING ROAD UD	268,906,704	0.215000	578,149	0	578,149	0.0000745326	4,797
907	NORTHPOINTE WCID	507,949,077	0.385000	1,955,604	0	1,955,604	0.0002521084	16,228
730	NORTHWEST FREEWAY MUD	55,995,604	1.290000	722,343	0	722,343	0.0000931215	5,994
745	NORTHWEST H C MUD 5	946,298,903	0.790000	7,475,761	0	7,475,761	0.0009637441	62,034
746	NORTHWEST H C MUD 6	222,670,668	0.390000	868,416	0	868,416	0.0001119526	7,206
749	NORTHWEST H C MUD 9	276,532,122	0.600000	1,659,193	0	1,659,193	0.0002138963	13,768
750	NORTHWEST H C MUD 10	379,098,265	0.870000	3,298,155	0	3,298,155	0.0004251845	27,368
752	NORTHWEST H C MUD 12	76,090,045	1.060000	806,554	0	806,554	0.0001039776	6,693
755	NORTHWEST H C MUD 15	195,970,261	0.830000	1,626,553	0	1,626,553	0.0002096885	13,497
756	NORTHWEST H C MUD 16	109,384,077	1.210000	1,323,547	0	1,323,547	0.0001706262	10,983
759	NORTHWEST H C MUD 19	235,465,517	1.120000	2,637,214	0	2,637,214	0.0003399787	21,884
760	NORTHWEST H C MUD 20	177,301,844	0.540000	957,430	0	957,430	0.0001234279	7,945
761	NORTHWEST H C MUD 21	112,154,641	0.250000	280,387	0	280,387	0.0000361463	2,327
762	NORTHWEST H C MUD 22	125,054,330	0.900000	1,125,489	0	1,125,489	0.0001450934	9,339

ESTIMATED 2014 COST ALLOCATION TO TAXING UNITS

JUR No.	TAXING UNIT	2012 TAXABLE VALUE @5/15/2013	2012 TOTAL TAX RATE	2012 TOTAL LEVY	2012 FROZEN LEVY LOSS	2012 ADJ. LEVY FOR CALC.	ALLOCATION RATIO	2014 BUDGET ALLOCATION
763	NORTHWEST H C MUD 23	89,216,085	0.930000	829,710	0	829,710	0.0001069628	6,885
764	NORTHWEST H C MUD 24	292,770,518	0.830000	2,429,995	0	2,429,995	0.0003132649	20,164
768	NORTHWEST H C MUD 28	91,107,400	0.680000	619,530	0	619,530	0.0000798672	5,141
769	NORTHWEST H C MUD 29	246,313,388	0.450000	1,108,410	0	1,108,410	0.0001428916	9,198
770	NORTHWEST H C MUD 30	250,432,350	0.800000	2,003,459	0	2,003,459	0.0002582776	16,625
771	NORTHWEST H C MUD 32	256,009,786	0.910000	2,329,689	0	2,329,689	0.0003003338	19,332
776	NORTHWEST H C MUD 36	148,572,334	0.866000	1,286,636	0	1,286,636	0.0001658678	10,676
779	NORTHWOOD MUD 1	29,368,681	1.250000	367,109	0	367,109	0.0000473262	3,046
778	NOTTINGHAM COUNTRY MUD	689,796,090	0.395000	2,724,695	0	2,724,695	0.0003512564	22,609
777	NW PARK CONSOLIDATED MUD	486,683,674	0.550000	2,676,760	0	2,676,760	0.0003450768	22,212
781	OAKMONT PUBLIC UTILITY DISTRICT	215,706,016	1.250000	2,696,325	0	2,696,325	0.0003475990	22,374
783	PARKWAY UD	165,527,743	1.020000	1,688,383	0	1,688,383	0.0002176593	14,010
787	PINE VILLAGE PUD	23,244,504	2.950000	685,713	0	685,713	0.0000883993	5,690
788	PONDEROSA FOREST UD	238,449,085	0.100000	238,449	0	238,449	0.0000307399	1,979
789	POSTWOOD MUD	78,446,004	0.880000	690,325	0	690,325	0.0000889938	5,728
790	PRESTONWOOD FOREST MUD	166,103,541	0.350000	581,362	0	581,362	0.0000749468	4,824
786	RANKIN ROAD WEST MUD	74,750,619	1.310000	979,233	0	979,233	0.0001262387	8,126
801	REID ROAD MUD 1	202,089,802	0.570000	1,151,912	0	1,151,912	0.0001484997	9,559
802	REID ROAD MUD 2	260,298,043	0.420000	1,093,252	0	1,093,252	0.0001409375	9,072
811	REMYNGTON MUD 1	753,208,341	0.650000	4,895,854	0	4,895,854	0.0006311532	40,626
803	RENN ROAD MUD	97,604,514	0.760000	741,794	0	741,794	0.0000956290	6,155
804	RICEWOOD MUD	244,403,508	0.580000	1,417,540	0	1,417,540	0.0001827434	11,763
810	RICHEY ROAD MUD	194,690,739	0.250000	486,727	0	486,727	0.0000627468	4,039
806	ROLLING CREEK UD	132,931,957	0.970000	1,289,440	0	1,289,440	0.0001662293	10,700
807	ROLLING FORK PUD	110,353,589	0.400000	441,414	0	441,414	0.0000569053	3,663
809	ROYALWOOD MUD	27,297,775	0.457160	124,795	0	124,795	0.0000160881	1,036
822	SAGEMEADOW UD	197,930,444	0.490000	969,859	0	969,859	0.0001250302	8,048
823	SEQUOIA UD	40,363,533	0.250000	100,909	0	100,909	0.0000130088	837
824	SHASLA PUD	60,991,859	1.095000	667,861	0	667,861	0.0000860979	5,542
833	SHELDON ROAD MUD	65,406,330	1.460000	954,932	0	954,932	0.0001231059	7,924
826	SPANISH COVE PUD	18,345,842	0.750000	137,594	0	137,594	0.0000177380	1,142
827	SPENCER ROAD PUD	269,324,605	0.490000	1,319,691	0	1,319,691	0.0001701291	10,951
829	SPRING CREEK FOREST PUD	155,011,265	0.495000	767,306	0	767,306	0.0000989179	6,367
831	SPRING MEADOWS MUD	140,619,607	1.210000	1,701,497	0	1,701,497	0.0002193499	14,119
832	SPRING WEST MUD	157,173,611	1.020000	1,603,171	0	1,603,171	0.0002066742	13,303
825	SW HARRIS COUNTY MUD 1	38,858,258	0.820000	318,638	0	318,638	0.0000410775	2,644
841	TATTOR ROAD MUD	128,845,713	0.640000	824,613	0	824,613	0.0001063057	6,843
842	TERRANOVA WEST MUD	169,553,542	0.690000	1,169,919	0	1,169,919	0.0001508211	9,708
125	THE WOODLANDS TOWNSHIP	893,260,472	0.317300	2,834,315	0	2,834,315	0.0003653881	23,519

ESTIMATED 2014 COST ALLOCATION TO TAXING UNITS

JUR No.	TAXING UNIT	2012 TAXABLE VALUE @5/15/2013	2012 TOTAL TAX RATE	2012 TOTAL LEVY	2012 FROZEN LEVY LOSS	2012 ADJ. LEVY FOR CALC.	ALLOCATION RATIO	2014 BUDGET ALLOCATION
847	TIMBER LANE UD	387,333,556	1.020000	3,950,802	0	3,950,802	0.0005093210	32,784
846	TIMBERLAKE ID	116,149,504	0.540000	627,207	0	627,207	0.0000808569	5,205
848	TRAIL OF THE LAKES MUD	298,647,196	0.700000	2,090,530	0	2,090,530	0.0002695025	17,347
678	WALLER HARRIS ESD 200	603,214,439	0.099500	600,198	0	600,198	0.0000773750	4,980
861	WEST HARRIS COUNTY MUD 1	315,017,610	0.410000	1,291,572	0	1,291,572	0.0001665041	10,717
862	WEST HARRIS COUNTY MUD 2	116,064,545	0.500000	580,323	0	580,323	0.0000748128	4,816
864	WEST HARRIS COUNTY MUD 4	60,426,087	1.090000	658,644	0	658,644	0.0000849097	5,465
865	WEST HARRIS COUNTY MUD 5	64,376,935	1.200000	772,523	0	772,523	0.0000995905	6,410
866	WEST HARRIS COUNTY MUD 6	107,243,387	0.760000	815,050	0	815,050	0.0001050729	6,763
867	WEST HARRIS COUNTY MUD 7	140,256,676	0.900000	1,262,310	0	1,262,310	0.0001627318	10,475
869	WEST HARRIS COUNTY MUD 9	208,270,926	0.600000	1,249,626	0	1,249,626	0.0001610966	10,369
870	WEST HARRIS COUNTY MUD 10	282,511,281	0.710000	2,005,830	0	2,005,830	0.0002585833	16,644
871	WEST HARRIS COUNTY MUD 11	637,576,405	0.730000	4,654,308	0	4,654,308	0.0006000141	38,621
874	WEST HARRIS COUNTY MUD 14	152,986,912	0.680000	1,040,311	0	1,040,311	0.0001341126	8,632
875	WEST HARRIS COUNTY MUD 15	329,707,205	0.290000	956,151	0	956,151	0.0001232630	7,934
876	WEST HARRIS COUNTY MUD 16	20,934,631	0.500000	104,673	0	104,673	0.0000134940	869
877	WEST HARRIS COUNTY MUD 17	80,845,472	1.310000	1,059,076	0	1,059,076	0.0001365317	8,788
879	WEST HARRIS COUNTY MUD 21	137,923,027	1.150000	1,586,115	0	1,586,115	0.0002044754	13,162
893	WEST KEEGANS BAYOU ID	107,769,392	0.100000	107,769	0	107,769	0.0000138931	894
895	WEST MEMORIAL MUD	188,825,123	0.450000	849,713	0	849,713	0.0001095415	7,051
851	WESTADOR MUD	224,091,953	0.172500	386,559	0	386,559	0.0000498336	3,208
894	WESTLAKE MUD 1	136,664,379	0.632500	864,402	0	864,402	0.0001114351	7,173
896	WESTON MUD	333,044,792	0.610000	2,031,573	0	2,031,573	0.0002619020	16,858
897	WESTPARK MUD	178,275,074	0.670000	1,194,443	0	1,194,443	0.0001539826	9,911
899	WHITE OAK BEND MUD	53,994,412	1.010000	545,344	0	545,344	0.0000703035	4,525
917	WILLOW FORK DRAINAGE DISTRICT	226,798,092	0.190000	430,916	0	430,916	0.0000555519	3,576
901	WINDFERN FOREST UD	260,853,158	0.480000	1,252,095	0	1,252,095	0.0001614149	10,390
902	WOODCREEK MUD	117,053,137	0.600000	702,319	0	702,319	0.0000905401	5,828
491	TOTALS	\$2,404,213,159,304		7,843,399,969	86,401,922	7,756,998,047	1.0000000002	\$64,367,413