



***HARRIS COUNTY
APPRAISAL DISTRICT
HARRIS COUNTY
HOUSTON, TEXAS***

2016 BUDGET

July 2015

RESOLUTION NO. 2015-03

**A RESOLUTION OF THE BOARD OF DIRECTORS OF THE HARRIS
COUNTY APPRAISAL DISTRICT APPROVING AND ADOPTING
THE 2016 BUDGET OF SAID DISTRICT**

* * * *

WHEREAS, pursuant to the provisions of the Texas Property Tax code, a proposed budget for the Harris County Appraisal District for the year 2016 has heretofore been prepared by the chief appraiser of the district and timely submitted by him to the Board of Directors of such district and to the governing bodies of each taxing unit within such district; and

WHEREAS, following timely notice in writing furnished to the presiding officer of the governing body of each such taxing unit and published in a newspaper of general circulation in Harris County, Texas, in accordance with Section 6.062 of the Texas Property Tax Code, the Board of Directors of said district did on the 15th day of July, 2015, conduct a public hearing on such proposed budget; and

WHEREAS, at such public hearing any and all persons desiring to be heard on any matter relating to said proposed budget were heard and their comments and suggestions were duly noted and considered by the Board of Directors of said district; and

WHEREAS, the Board of Directors of the district now deems it necessary and appropriate to formally approve and adopt at this time the 2016 budget of the Harris County Appraisal District; now, therefore

**BE IT RESOLVED BY THE BOARD OF DIRECTORS OF THE HARRIS COUNTY
APPRAISAL DISTRICT:**

Section 1. That the facts and recitations set forth in the preamble of this Resolution be, and they are hereby, found to be true and correct and that they be, and they are hereby, adopted, ratified, and confirmed.

Section 2. That the proposed budget for the Harris County Appraisal District for the year 2016 as heretofore submitted to and considered by the Board of Directors of such district and as heretofore modified or changed by such Board of Directors of such district during its deliberations on such budget following the public hearing thereon, in the total amount of \$77,706,380 will be paid to the district by the various taxing units participating in

the district according to their respective proportionate shares calculated pursuant to the formula established by Section 6.06(d) of the Texas Property Tax Code) be, and it is hereby, approved and adopted as the official budget of said district for the year 2016.

Section 3. That the chief appraiser of the Harris County Appraisal District be, and he is hereby, authorized to make the interfund transfers between the general fund and the internal service fund as necessary for expenditures related to the group benefits fund.

Section 4. That the chief appraiser of the Harris County Appraisal District be, and he is hereby, authorized to transfer unencumbered balances from one budget account to another budget account during the 2016 fiscal year in amounts of \$25,000 or less. Amounts exceeding \$25,000 may be transferred under the following circumstances and conditions: A written request to effect such transfers exceeding \$25,000 shall be submitted by the chief appraiser to the Board of Directors. Such request shall identify the budget account from which it is proposed the transfer will be made, the budget account to which it is proposed the transfer will be made, and the need or justification for such transfer. Approval of such request by formal action of the Board of Directors must be obtained before the chief appraiser shall be authorized to make such transfer.

Section 5. That, for the purpose of authenticating the official 2016 budget of the Harris County Appraisal District adopted hereby, a copy of which is attached hereto and made a part hereof for all purposes, the chairman and secretary of the Board of Directors of said district be, and they are hereby, authorized and directed to affix their signatures on the cover of the original of such budget under the following certification which they shall cause to be placed thereon:

"This is to certify that this is the official 2016 budget of the Harris County Appraisal District approved and adopted by the Board of Directors of said district on July 15, 2015."

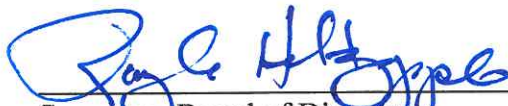
Section 6. That the chief appraiser of the district be, and he is hereby, authorized and directed to place or cause to be placed the official, authenticated original of said 2016 budget among the public records of the district and to make the same available for inspection in the office of the district by any person requesting that right and privilege.

PASSED, APPROVED, AND ADOPTED this the 15th day of July, 2015.



Chairman, Board of Directors
Harris County Appraisal District

ATTEST:



Secretary, Board of Directors
Harris County Appraisal District

(SEAL)





***HARRIS COUNTY
APPRAISAL DISTRICT***

2016 BUDGET

January 1, 2016 through December 31, 2016

**REVENUES & EXPENDITURES
FOR ALL DEPARTMENTS**

**Sands L. Stiefer, Chief Appraiser
Houston, Texas
July 2015**

Contents

- 3 District Officials
Board of directors and chief appraiser
- 4 Plan of Organization
The departments and divisions of the district and the number of full time equivalent positions

FINANCIAL SECTION

- 6 2016 Budget
Expenditures for the general fund by line item account
- 8 Expenditure Summary & Method of Financing
Summarizes expenditures by account groups and an estimate of revenue used to finance the expenditures
- 9 Line Item Expenditures by Department
General fund expenditures by line item account for each of the district's 3 operating departments
- 11 2016 Budget with Comparisons
Comparison of the 2016 budget to the 2015 budget and 2014 actual expenditures by line item

TEXAS PROPERTY TAX CODE SECTION

- 14 Schedule of Positions
List of full time equivalent positions in alphabetical order; indicating the pay grade and number of positions for each position title
- 17 Schedule of Appraisal Review Board Members
Number of appraisal review board members eligible for payment
- 18 Salary Schedule and Provisions
Employee pay is determined by three salary schedules: Classified, Technical, and Director; list of line item positions; merit and quality service incentive salary increases; compensatory time; career development program; and, career ladder program

21 General Provisions

Provisions relating to mileage, expense allowances, commissioned security officers uniform cleaning, cell phone allowance, travel regulations, van pool subsidy, general counsel, and reappropriation of certain income

25 Employee Benefits Schedule

Provisions for employee benefits, including paid leave and vacation

28 Appraisal Review Board Provisions

Provisions relating to ARB Members and other appropriations

30 Capital Expenditures

List of capital items scheduled for acquisition

31 Estimated Cost Allocation to Taxing Units

List of taxing units allocated a portion of this budget and the estimated amount to be paid

DISTRICT OFFICIALS

Harris County Appraisal District Board of Directors 2015

ED HEATHCOTT
Chairman

RAY HOLTZAPPLE
Secretary

MIKE SULLIVAN
Assistant Secretary

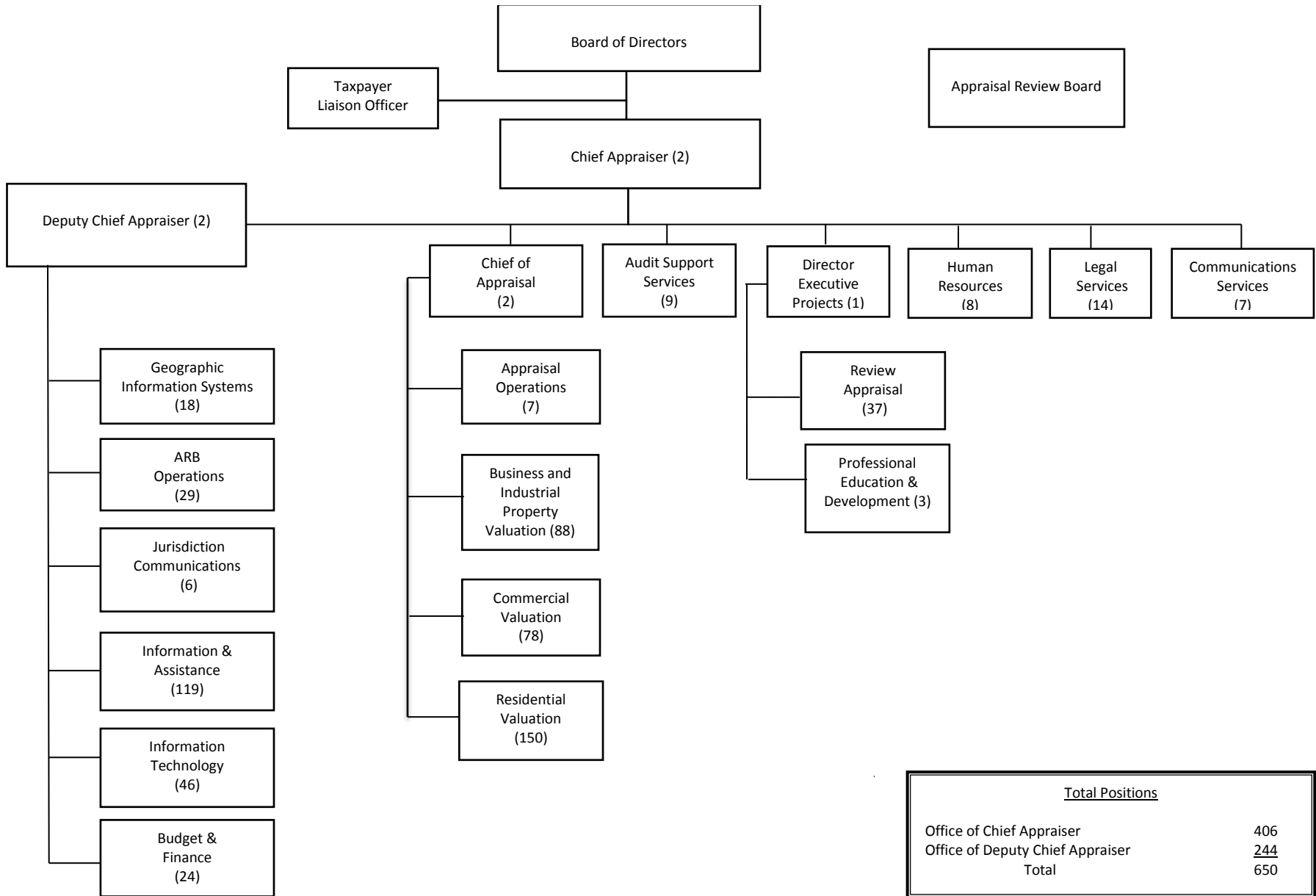
GLENN PETERS
Member

TONI TRUMBULL
Member

MIKE LUNCEFORD
Member

Sands L. Stiefer
Chief Appraiser

PLAN OF ORGANIZATION - 2016



<u>Total Positions</u>	
Office of Chief Appraiser	406
Office of Deputy Chief Appraiser	<u>244</u>
Total	650

FINANCIAL SECTION

2016 Budget – General Fund

Expenditure Summary and Method of Financing

General Fund – Line Item Expenditures by Department

2016 Budget with Comparisons

2016 BUDGET
GENERAL FUND

Account Number	Account Name	2016 Budget
	Number of Positions	650.0
	Part-time & Seasonal FTEs	8.7
<u>SALARIES, WAGES & RELATED</u>		
	Salaries & Wages	\$34,904,517
	Allowance for Career Development	\$95,000
	Less Salary Lapse	(\$1,037,878)
	Allowance for Merit	\$700,000
	Reserve for Longevity	\$389,350
	Allowance for Career Ladder	\$125,000
3010	Net Salaries & Wages	35,175,989
3011	ARB Board Members	\$2,700,000
3015	Contract & Seasonal Labor	\$0
3020	Shift Differential	\$32,000
3030	Overtime	\$229,483
3040	Part-time & Seasonal Wages	\$302,500
TOTAL SALARIES, WAGES & RELATED		<u>\$38,439,972</u>
<u>EMPLOYEE BENEFITS & RELATED</u>		
3501	Group Health Insurance	6,895,200
3503	Workers' Compensation Insurance	95,000
3504	Group Life & LTD Insurance	93,203
3505	Group Dental Insurance	226,980
3507	Unemployment Insurance	224,100
3520	Retirement	4,638,766
3526	FICA Medicare	557,378
3527	Social Security	186,155
TOTAL EMPLOYEE BENEFITS & RELATED		<u>12,916,782</u>
<u>OFFICE & FIELD OPERATIONS</u>		
4001	Office Supplies	155,586
4003	Office Equipment Maintenance	455,450
4011	Telephone & Communication Service	289,843
4020	Copier Leases	94,000
4021	Copier Supplies & Maintenance	145,390
4030	Mapping Reproduction & Supplies	5,000
4040	Public Notice Advertising	18,000
4050	Security Services	159,750
4060	Field Travel, Vanpool & Other Exp	1,080,868
4070	Appraisal Supplies	13,140
4080	Vehicle Gasoline & Maintenance	34,000
4090	Records Storage & Supplies	1,500
4092	Records Conversion Services	0
4097	Employee Recognition Activities	12,000
4100	Postage, Mailing, & Handling Svcs.	2,172,000
4200	Professional Registration & Dues	75,375
4202	Seminars & Other Tuition	227,027

2016 BUDGET
GENERAL FUND

Account Number	Account Name	2016 Budget
4212	Education Travel & Expenses	126,500
4213	Books, Manuals & Publications	252,632
4501	Printing, Forms, & Stationery	80,150
4530	Paper, Copier & Printer	135,483
TOTAL OFFICE & FIELD OPERATIONS		5,533,694
 <u>COMPUTER OPERATIONS</u>		
5010	Computer Leasing	0
5020	CPU & Related Maintenance	104,000
5030	Other Computer Maintenance	11,000
5040	Computer Supplies	33,850
5050	Software Lease & Maintenance	1,212,984
5060	Teleprocessing Lines & Installation	17,500
TOTAL COMPUTER OPERATIONS		1,379,334
 <u>PROFESSIONAL SERVICES</u>		
5510	Financial Auditing	60,300
5520	Legal Services	10,983,967
5525	Arbitration Fees & Services	200,000
5526	State Office of Admin Hearings	5,000
5530	Appraisal Services	1,506,295
5550	Other Professional Services	543,760
5551	Mapping & Records Maintenance	1,320,722
TOTAL PROFESSIONAL SERVICES		14,620,044
 <u>OFFICE SPACE, UTILITIES & RELATED</u>		
6100	Office Space	2,421,904
6150	Utilities	590,000
6200	Building & Fixture Maintenance	1,524,650
6400	Casualty & Liability Insurance	130,000
TOTAL OFFICE SPACE, UTILITIES & RELATED		4,666,554
 <u>FIXED ASSETS PURCHASES</u>		
6501	Capital Purchases	150,000
TOTAL FIXED ASSETS PURCHASES		150,000
TOTAL BUDGET		\$77,706,380

EXPENDITURE SUMMARY AND METHOD OF FINANCING
2016 BUDGET

<u>BUDGETED EXPENDITURES</u>	2015 BUDGET	2016 BUDGET	Variance	% Change
<u>Account Groups</u>				
Number of Positions	649.0	650.0	1.0	0.2%
Part-time & Seasonal FTEs	6.8	8.7	1.9	28.2%
Salaries, Wages & Related	37,233,772	38,439,972	1,206,200	3.2%
Employee Benefits	12,620,107	12,916,782	296,675	2.4%
Office & Field Operations	5,392,470	5,533,694	141,224	2.6%
Computer Operations	1,381,447	1,379,334	(2,113)	-0.2%
Professional Services	15,633,154	14,620,044	(1,013,110)	-6.5%
Office Space, Utilities & Maint.	4,166,554	4,666,554	500,000	12.0%
Capital Expenditures	150,000	150,000	0	0.0%
TOTAL BUDGET	76,577,504	77,706,380	1,128,876	1.5%
 <u>FINANCING METHOD</u>				
Jurisdiction Allocations	75,147,504	77,706,380	2,558,876	3.4%
Interest Income	30,000	0	(30,000)	-100.0%
Other Income	600,000	0	(600,000)	-100.0%
Application of Restricted Funds	0	0	0	0.0%
Application of Unrestricted Funds				
General Fund	750,000	0	(750,000)	-100.0%
Internal Service Fund	50,000	0	(50,000)	-100.0%
TOTAL FINANCING METHOD	76,577,504	77,706,380	1,128,876	1.5%

GENERAL FUND - LINE ITEM EXPENDITURES BY DEPARTMENT
2016 BUDGET

Account Number	Account Name	TOTAL BUDGET	BOARD OF DIRECTORS	OFC CHIEF APPRAISER	DEP CHIEF APPRAISER
	Number of Positions	650.0	0.0	406.0	244.0
	Part-time & Seasonal FTEs	8.7	0.0	4.9	3.8
<u>SALARIES, WAGES & RELATED</u>					
	Salaries & Wages	\$34,904,517	0	21,910,748	12,993,769
	Allowance for Career Development	95,000	0	0	95,000
	Less Salary Lapse	(1,037,878)	0	(651,511)	(386,367)
	Allowance for Merit	700,000	0	0	700,000
	Reserve for Longevity	389,350	0	243,194	146,156
	Allowance for Career Ladder	125,000	0	0	125,000
3010	Net Salaries & Wages	35,175,989	0	21,502,431	13,673,558
3011	ARB Board Members	2,700,000	2,700,000	0	0
3020	Shift Differential	32,000	0	0	32,000
3030	Overtime	229,483	0	105,683	123,800
3040	Part-time & Seasonal Wages	302,500	30,000	152,500	120,000
TOTAL SALARIES, WAGES & RELATED		38,439,972	2,730,000	21,760,614	13,949,358
<u>EMPLOYEE BENEFITS & RELATED</u>					
3501	Group Health Insurance	6,895,200	0	4,306,848	2,588,352
3503	Workers' Compensation Insurance	95,000	0	0	95,000
3504	Group Life & LTD Insurance	93,203	0	56,830	36,373
3505	Group Dental Insurance	226,980	0	141,776	85,204
3507	Unemployment Insurance	224,100	48,600	109,620	65,880
3520	Retirement	4,638,766	0	2,828,502	1,810,264
3526	FICA Medicare	557,378	39,585	315,528	202,265
3527	Social Security	186,155	169,260	9,455	7,440
TOTAL EMPLOYEE BENEFITS & RELATED		12,916,782	257,445	7,768,559	4,890,778
<u>OFFICE & FIELD OPERATIONS</u>					
4001	Office Supplies	155,586	1,000	81,629	72,957
4003	Office Equipment Maintenance	455,450	0	0	455,450
4011	Telephone & Communication Service	289,843	0	0	289,843
4020	Copier Leases	94,000	0	0	94,000
4021	Copier Supplies & Maintenance	145,390	0	0	145,390
4030	Mapping Reproduction & Supplies	5,000	0	0	5,000
4040	Public Notice Advertising	18,000	0	0	18,000
4050	Security Services	159,750	0	0	159,750
4060	Field Travel, Vanpool & Other Exp	1,080,868	3,000	1,011,828	66,040
4070	Appraisal Supplies	13,140	0	13,140	0
4080	Vehicle Gasoline & Maintenance	34,000	0	0	34,000
4090	Records Storage & Supplies	1,500	0	0	1,500
4092	Records Conversion Services	0	0	0	0
4097	Employee Recognition Activities	12,000	12,000	0	0
4100	Postage, Mailing, & Handling Svcs.	2,172,000	0	0	2,172,000
4200	Professional Registration & Dues	75,375	0	1,805	73,570
4202	Seminars & Other Tuition	227,027	16,000	65,143	145,884
4212	Education Travel & Expenses	126,500	3,800	84,200	38,500
4213	Books, Manuals & Publications	252,632	0	233,132	19,500
4501	Printing, Forms, & Stationery	80,150	0	0	80,150
4530	Paper, Copier & Printer	135,483	0	0	135,483
TOTAL OFFICE & FIELD OPERATIONS		5,533,694	35,800	1,490,877	4,007,017
<u>COMPUTER OPERATIONS</u>					
5010	Computer Leasing	0	0	0	0
5020	CPU & Related Maintenance	104,000	0	0	104,000
5030	Other Computer Maintenance	11,000	0	0	11,000
5040	Computer Supplies	33,850	0	0	33,850

GENERAL FUND - LINE ITEM EXPENDITURES BY DEPARTMENT
2016 BUDGET

Account Number	Account Name	TOTAL BUDGET	BOARD OF DIRECTORS	OFC CHIEF APPRAISER	DEP CHIEF APPRAISER
5050	Software Lease & Maintenance	1,212,984	0	0	1,212,984
5060	Teleprocessing Lines & Installation	17,500	0	0	17,500
TOTAL COMPUTER OPERATIONS		1,379,334	0	0	1,379,334
<u>PROFESSIONAL SERVICES</u>					
5510	Financial Auditing	60,300	0	0	60,300
5520	Legal Services	10,983,967	10,983,967	0	0
5525	Arbitration Fees & Services	200,000	200,000	0	0
5526	State Office of Admin Hearings	5,000	5,000	0	0
5530	Appraisal Services	1,506,295	0	1,506,295	0
5550	Other Professional Services	543,760	5,000	39,500	499,260
5551	Mapping & Records Maintenance	1,320,722	0	0	1,320,722
TOTAL PROFESSIONAL SERVICES		14,620,044	11,193,967	1,545,795	1,880,282
<u>OFFICE SPACE, UTILITIES & RELATED</u>					
6100	Office Space	2,421,904	0	0	2,421,904
6150	Utilities	590,000	0	0	590,000
6200	Building & Fixture Maintenance	1,524,650	0	0	1,524,650
6400	Casualty & Liability Insurance	130,000	0	0	130,000
TOTAL OFFICE SPACE, UTILITIES & RELATED		4,666,554	0	0	4,666,554
<u>FIXED ASSETS PURCHASES</u>					
6501	Capital Purchases	150,000	0	0	150,000
TOTAL FIXED ASSETS PURCHASES		150,000	0	0	150,000
TOTAL BUDGET		<u>\$77,706,380</u>	<u>\$14,217,212</u>	<u>\$32,565,845</u>	<u>\$30,923,323</u>

2016 BUDGET WITH COMPARISONS
2015 BUDGET & 2014 ACTUAL

Account Number	Account Name	2014 ACTUAL	2015 BUDGET	2016 BUDGET
	Number of Positions	649	649	650
	Part-time & Seasonal FTEs	8.8	6.8	9
<u>SALARIES, WAGES & RELATED</u>				
	Salaries & Wages	\$30,306,836	\$34,330,464	\$34,904,517
	Allowance for Career Development	0	75,000	95,000
	Less Salary Lapse	0	(1,020,806)	(1,037,878)
	Allowance for Merit	0	600,000	700,000
	Reserve for Longevity	0	347,864	389,350
	Allowance for Career Ladder	0	0	125,000
3010	Net Salaries & Wages	30,306,836	34,332,522	\$35,175,989
3011	ARB Board Members	2,596,823	2,450,000	2,700,000
3015	Contract & Seasonal Labor	0	0	0
3020	Shift Differential	296,099	32,000	32,000
3030	Overtime	202,298	176,750	229,483
3040	Part-time & Seasonal Wages	287,894	242,500	302,500
TOTAL SALARIES, WAGES & RELATED		33,689,951	37,233,772	\$38,439,972
<u>EMPLOYEE BENEFITS & RELATED</u>				
3501	Group Health Insurance	6,214,824	6,658,740	6,895,200
3503	Workers' Compensation Insurance	101,407	95,000	95,000
3504	Group Life & LTD Insurance	77,243	90,843	93,203
3505	Group Dental Insurance	221,131	226,632	226,980
3507	Unemployment Insurance	173,610	116,820	224,100
3520	Retirement	5,138,625	4,725,246	4,638,766
3526	FICA Medicare	488,404	539,891	557,378
3527	Social Security	179,073	166,935	186,155
TOTAL EMPLOYEE BENEFITS & RELATED		12,594,317	12,620,107	12,916,782
<u>OFFICE & FIELD OPERATIONS</u>				
4001	Office Supplies	107,720	147,436	155,586
4003	Office Equipment Maintenance	502,520	395,200	455,450
4011	Telephone & Communication Service	199,747	247,610	289,843
4020	Copier Leases	78,887	94,000	94,000
4021	Copier Supplies & Maintenance	86,585	145,390	145,390
4030	Mapping Reproduction & Supplies	849	5,000	5,000
4040	Public Notice Advertising	10,205	18,000	18,000
4050	Security Services	131,240	159,750	159,750
4060	Field Travel, Vanpool & Other Exp	937,407	1,080,518	1,080,868
4070	Appraisal Supplies	28,043	13,040	13,140
4080	Vehicle Gasoline & Maintenance	10,960	34,000	34,000
4090	Records Storage & Supplies	625	1,500	1,500
4092	Records Conversion Services	0	0	0
4097	Employee Recognition Activities	9,919	12,000	12,000
4100	Postage, Mailing, & Handling Svcs.	1,939,977	2,122,000	2,172,000
4200	Professional Registration & Dues	62,095	76,465	75,375
4202	Seminars & Other Tuition	149,270	227,754	227,027
4212	Education Travel & Expenses	115,410	126,500	126,500
4213	Books, Manuals & Publications	222,332	274,087	252,632
4501	Printing, Forms, & Stationery	65,193	80,150	80,150
4530	Paper, Copier & Printer	112,003	132,070	135,483
TOTAL OFFICE & FIELD OPERATIONS		4,770,985	5,392,470	5,533,694

2016 BUDGET WITH COMPARISONS
2015 BUDGET & 2014 ACTUAL

Account Number	Account Name	2014 ACTUAL	2015 BUDGET	2016 BUDGET
<u>COMPUTER OPERATIONS</u>				
5010	Computer Leasing	0	0	0
5020	CPU & Related Maintenance	9,981	104,000	104,000
5030	Other Computer Maintenance	0	11,000	11,000
5040	Computer Supplies	0	33,850	33,850
5050	Software Lease & Maintenance	1,043,300	1,215,097	1,212,984
5060	Teleprocessing Lines & Installation	0	17,500	17,500
TOTAL COMPUTER OPERATIONS		1,053,281	1,381,447	1,379,334
<u>PROFESSIONAL SERVICES</u>				
5510	Financial Auditing	42,997	60,300	60,300
5520	Legal Services	8,457,016	12,283,967	10,983,967
5525	Arbitration Fees & Services	164,700	75,000	200,000
5526	State Office of Admin Hearings	0	5,000	5,000
5530	Appraisal Services	1,439,554	1,557,195	1,506,295
5550	Other Professional Services	785,903	580,970	543,760
5551	Mapping & Records Maintenance	792,251	1,070,722	1,320,722
TOTAL PROFESSIONAL SERVICES		11,682,421	15,633,154	14,620,044
<u>OFFICE SPACE, UTILITIES & RELATED</u>				
6100	Office Space	2,418,994	2,421,904	2,421,904
6150	Utilities	444,005	590,000	590,000
6200	Building & Fixture Maintenance	1,036,540	1,024,650	1,524,650
6400	Casualty & Liability Insurance	120,872	130,000	130,000
TOTAL OFFICE SPACE, UTILITIES & RELATED		4,020,411	4,166,554	4,666,554
<u>FIXED ASSETS PURCHASES</u>				
6501	Capital Purchases	62,643	150,000	150,000
TOTAL FIXED ASSETS PURCHASES		62,643	150,000	150,000
		<u>\$67,874,008</u>	<u>\$76,577,504</u>	<u>\$77,706,380</u>
TOTAL BUDGET				

TEXAS PROPERTY TAX CODE SECTION

The following schedules are provided pursuant to Section 6.06(a) of the Texas Property Tax Code:

Schedule of Positions

Schedule of Appraisal Review Board Members

Salary Schedule and Provisions

General Provisions

Employee Benefits Schedule – General & Special Provisions

Appraisal Review Board Provisions

2016 Capital Expenditures

2016 Estimated Cost Allocation to Taxing Units

SCHEDULE OF APPRAISAL DISTRICT POSITIONS - 2016 BUDGET

Position	Salary Grade	Number of Positions
Accounting Specialist	16	3
Accounts Examiner	16	3
Admin Tech	8	45
Administrative Assistant	15	7
ADP Supervisor	15	1
Agent Section Coordinator	20	1
Appraisal Data Analyst	22	1
Appraisal Hearing Supervisor	21	1
Appraisal Information Specialist	21	2
Appraisal Operations Specialist	23	1
Appraisal Support Technician	19	2
Appraiser I	15	67
Appraiser II	16	27
Appraiser III	17	55
Appraiser IV	18	13
ARB Operations Manager	23	1
Assistant Chief Financial Officer	26	1
Assistant CIO for Applications	27	1
Assistant CIO for Systems	27	1
Assistant Director, Info & Assist	22	1
Assistant Field Manager	21	1
Assistant Network Administrator	21	1
Assistant Valuation Manager	21	1
Associate Chief Appraiser, Appraisal Operations	26	1
Associate Chief Appraiser, Bus & Indus	26	1
Associate Chief Appraiser, Commercial	26	1
Associate Chief Appraiser, Residential	26	1
Associate Chief Appraiser, Review	26	1
Audio Visual Specialist	15	1
Benefits Administrator	20	1
Budget & Finance Manager	23	1
Chief Appraiser	-	1
Chief Communications Officer	27	1
Chief Financial Officer	27	1
Chief Human Relations Officer	27	1
Chief Information Officer	-	1
Chief Legal Officer	28	1
Chief of Appraisal	-	1
Community Relations Representative	19	1
Corrections Manager	23	2
Counter Supervisor	20	1
Deputy Chief Appraiser	-	1
Director, ARB Operations	24	1
Director, Audit Support	24	1
Director, Executive Projects	27	1
Education & Development Manager	23	1
Engineer	21	2
Equipment Operator	12	3
Executive Assistant	19	1
Executive Projects Manager	27	1

SCHEDULE OF APPRAISAL DISTRICT POSITIONS - 2016 BUDGET

Position	Salary Grade	Number of Positions
Exemption Coordinator	20	1
Exemption Specialist	12	13
Field Manager	23	2
Field Supervisor	21	2
Geographic Information Specialist	15	10
GIS Analyst	22	3
GIS Programming Manager	25	1
Hearings Specialist	10	9
Hearings Supervisor	14	1
HR Generalist	18	1
HRIS Administrator	20	1
HRIS Systems Specialist	19	1
Human Resources Manager	23	1
Imaging Technician	10	2
Industrial Manager	23	1
Internal Auditor	20	1
Jurisdiction Coordinator	18	3
Legal Assistant	15	2
Legal Counsel	23	6
Mapping Supervisor	20	1
Network Administrator	25	1
Network Service Technician	18	1
New Subdivision Coordinator	20	1
Payroll Specialist	19	2
Personal Property Manager	23	1
Processing Supervisor	22	1
Program Administrator	17	1
Program Data Design Analyst	22	16
Project Specialist	20	2
Public Affairs Officer	15	1
Public Information Technician	16	3
Purchaser	14	2
Purchasing & Facilities Manager	23	1
Records Management Officer	20	1
Records Management Specialist	13	1
Recruiter	20	1
Research Associate	18	7
Residential Valuation Specialist	20	1
Resolution Coordinator	20	1
Review Appraisal Manager	23	1
Review Appraiser	20	13
Security Manager	23	1
Security Officer	14	4
Security Officer Captain	16	1
Security Officer Lieutenant	16	1
Senior Accounting Specialist	17	1
Senior Accounts Examiner	19	1
Senior Admin Tech	11	25
Senior Director, Info & Assist	26	1
Senior Director, Jurisdiction Communications	26	1

SCHEDULE OF APPRAISAL DISTRICT POSITIONS - 2016 BUDGET

Position	Salary Grade	Number of Positions
Senior Exemption Specialist	15	6
Senior Financial Officer	27	1
Senior Geographic Information Specialist	18	1
Senior GIS Analyst	24	1
Senior Hearings Specialist	13	1
Senior Legal Counsel	25	2
Senior Paralegal	17	1
Senior Program Data Design Analyst	25	4
Senior Public Affairs Officer	20	2
Senior Research Associate	20	3
Senior Review Appraiser	25	4
Senior Supervising Appraiser	20	4
Senior Support Supervisor	16	5
Senior Systems Support Spec	16	2
Senior Technical Assist Spec	14	20
Senior Telephone Information Spec	14	2
Senior Valuation Analyst	20	19
Special Audit Manager	23	1
Supervising Appraiser	19	10
Supervising Examiner	21	1
Supervising Paralegal	21	1
Support Coordinator	15	2
Support Specialist	10	10
Systems Support Coordinator	20	1
Systems Support Specialist	14	7
Systems Support Supervisor	21	1
Team Lead-CAMA	25	1
Team Lead-Data	25	1
Team Lead-Development	25	1
Team Lead-Relationships	25	1
Team Lead-Workflow	25	1
Technical Assistance Specialist	11	30
Technical Program Specialist	16	7
Telephone Center Coordinator	20	1
Telephone Information Spec	11	19
Training & Development Specialist	20	1
Valuation Analyst	18	43
Valuation Manager	23	3
Valuation Supervisor	22	4
	139	650

SCHEDULE OF APPRAISAL REVIEW BOARD MEMBERS
2016 BUDGET

Position	Salary Group	Number of Positions
ARB Member	per diem	<u>190</u>
TOTAL		<u>190</u>

2016 SALARY SCHEDULE AND PROVISIONS

A. Classified Positions Salary Schedule.

<i>Grade</i>	<i>Minimum</i>	<i>Midpoint</i>	<i>Maximum</i>
8	\$25,712	\$32,397	\$39,082
9	\$27,512	\$34,665	\$41,818
10	\$29,438	\$37,091	\$44,745
11	\$31,498	\$39,688	\$47,877
12	\$33,703	\$42,466	\$51,229
13	\$36,062	\$45,439	\$54,815
14	\$38,587	\$48,619	\$58,652
15	\$41,288	\$52,023	\$62,758
16	\$44,178	\$55,664	\$67,151
17	\$47,270	\$59,561	\$71,851
18	\$50,579	\$63,730	\$76,881
19	\$54,120	\$68,191	\$82,262
20	\$57,908	\$72,965	\$88,021
21	\$61,962	\$78,072	\$94,182
22	\$66,299	\$83,537	\$100,775
23	\$70,940	\$89,385	\$107,829
24	\$75,906	\$95,642	\$115,377
25	\$81,219	\$102,337	\$123,454
26	\$86,905	\$109,500	\$132,095
27	\$92,988	\$117,165	\$141,342
28	\$99,497	\$125,367	\$151,236
29	\$106,462	\$134,142	\$161,822
30	\$113,914	\$143,532	\$173,150

B. Schedule of Positions Outside the Classification Schedule.

Chief Appraiser	\$205,000
Deputy Chief Appraiser	\$175,000
Chief Information Officer	\$158,311
Chief of Appraisal	\$151,236

C. It is expressly provided that the chief appraiser may, with the approval of the board of directors, grant merit salary increases to district employees. Such merit increases shall be subject to the following:

1. The maximum merit salary increase for an employee may not exceed 6%.
2. The maximum limit shall not exceed the amount specifically budgeted as "Allowance for Merit Increases".
3. For an employee to be eligible for a merit salary increase, the following criteria must be met:
 - (i) the employee must have been employed by the district for at least six continuous months prior to the award;

- (ii) at least six months must have elapsed since the employee's last promotion;
 - (iii) the employee's job performance and productivity must be consistently above that normally expected or required as evidenced by performance evaluation; and,
 - (iv) an employee may not receive more than one merit salary increase in a single fiscal year.
- D. In lieu of a merit salary increase the chief appraiser may, with the approval of the board of directors, award quality service incentive salary increases, disbursed as a single payment, to employees under the following conditions:
 - 1. The employee must have been employed by the district in a full-time position for at least 12 continuous months and must not have received a promotion or merit salary increase for a minimum of 6 months prior to the award;
 - 2. The employee's high level of performance must be documented by the performance evaluation system;
 - 3. The lump sum award may be no more than 5% of the employee's annual base rate of pay;
 - 4. Six months must have elapsed since the employee's last quality salary increase;
 - 5. Funding for such increases will be made only from the overall limits specified under Paragraph C, above; and,
 - 6. A quality salary increase is a one-time payment and does not increase the salary level for the following year.
- E. Career Development Program. The chief appraiser is authorized to award achievement pay according to the district's policy under the Career Development Program. The program provides for one-time achievement payment to employees having earned the Registered Professional Appraisal professional designation or, for non-appraisal employees, for completing approved coursework, or employees having earned the Geographic Information Systems professional designation. Employees who receive or hold more than one advanced designation (RPA, IAAO, MAI, CAI, TALCB, CTA, CFE) may be awarded recurring annual achievement payments.
- F. TDLR Career Ladder Program. The chief appraiser is authorized to promote staff upon reaching levels I, II, III and IV Property Tax Professional Appraiser designations with the Texas Department of Licensing and Regulation (TDLR) and satisfaction of such other requirements as the chief appraiser may impose. The schedule below (career ladder) is the authorized salary increase or promotion upon reaching these TDLR milestones. The minimum months in designation varies dependent on TDLR rules. A promotion to the next pay grade under this plan must result in a salary increase of not less than 3%. This schedule does not preclude a promotion to a higher pay grade if the staff member is otherwise qualified for a currently open position requiring TDLR registration. Promotions under these TDLR milestones are made within the current occupied budgeted position and the salary differential is funded through salary lapse.

Position Title or Equivalent	TDLR Designation	Minimum Months in Position & Designation	Pay Grade for Position
Appraiser I	Level I	6	15
Appraiser I	Level II	6	15
Appraiser II	Level III	12	16
Appraiser III	Level IV RPA		17

- G. The chief appraiser is authorized to pay a full-time employee who is a state approved instructor a stipend of \$500 if the employee teaches two or more state certification courses during a calendar year.
- H The chief appraiser may substitute other classified position titles for those listed in this Schedule of Positions when the chief appraiser finds that such reclassifications are necessary for effective performance of the district’s responsibilities. The chief appraiser is further authorized to reassign an employee serving in a classified position to another classified position or to move the employee to another salary within the employee’s salary grade as necessary to maintain desirable salary relationships:
1. between and among employees of the district; or
 2. between employees of the district and employees who hold similar positions in the relevant labor market;
 3. to retain staff essential to the district’s succession plans; or,
 4. to establish a 90-day dual incumbency for a position for the purpose of knowledge transfer prior to resignation or retirement of one of the incumbents.
- I. The chief appraiser is authorized to pay salaried exempt employees straight time for compensatory time worked during periods when paid leave is restricted or when the chief appraiser finds it essential for effective performance of critical functions.
- J. The chief appraiser is authorized to pay a full-time employee a stipend of up to \$500 for translation services per calendar year to ensure quality services to the limited english proficient populations.

GENERAL PROVISIONS

A. Mileage Allowance.

1. Use of Privately Owned Vehicles. Employees, board members, or persons assigned to the district by another agency under contract who use their privately owned vehicles on official district business are authorized reimbursement at the rate authorized by the Internal Revenue Service as the standard mileage deduction rate (currently \$0.575/mile for 2015).
 - a. Phase Out of Mileage and Expense Allowances. The chief appraiser is authorized to develop a schedule for phasing out mileage and expense allowances as appropriate to reflect the district's increasing reliance on photographic reinspection of property. As appropriate under that schedule, the chief appraiser may increase the salary of an employee or position that receives an allowance to offset the phased reduction.
2. Monthly Vehicle Allowance. The chief appraiser is authorized to pay a monthly vehicle allowance for appraisal positions whose job responsibilities require that they spend the majority of their time outside the district headquarters in an amount not to exceed \$450 per month. Division directors shall annually prepare a list of the employees and position numbers for which the monthly allowance is authorized. The total amount paid under this provision may not exceed the amount allocated in this budget for that purpose.
3. Idling Allowance. Appraisers performing as group leaders, or who are assigned to pre-review, review and quality control functions are authorized an "idling allowance" of \$1.00 per hour in addition to reimbursement for actual mileage as provided in the district's appraisal manual.
4. Audit Support Services. Commissioned officers and employees assigned to the Audit Support Services Division who engage in investigations or field audits are entitled to a vehicle allowance not to exceed \$450 per month for official use of their personal vehicles.
5. Reimbursement at Standard Mileage Rate. If the monthly vehicle allowance is insufficient to reimburse a designated employee for miles actually driven in the conduct of district business, that employee's reimbursement for the period will be calculated at the standard mileage rate.
6. Other Provisions. An employee who is transferred from a position that is authorized a vehicle allowance may be transferred at a higher salary step to offset the loss of a vehicle allowance. If an employee who is authorized a vehicle allowance uses a district owned vehicle on any day, the vehicle allowance is prorated by the number of days the district owned vehicle is used whether part of a day or a whole day.

- B. Expense Allowance. The following listed positions are authorized an expense allowance in lieu of a vehicle allowance, in-district mileage, and incidental in-district expenses at the monthly rate indicated:

Chief Appraiser	\$850
Deputy Chief Appraiser	\$550
Chief of Appraisal	\$550
Associate Chief Appraiser, Appraisal Operations	\$550
Chief Information Officer	\$550
Chief Financial Officer	\$550
Director, Audit Support	\$550
Senior Director, Jurisdiction Communications	\$550
Senior Director, Information & Assistance	\$550

- C. Uniform Cleaning Reimbursement. Commissioned security officers who are required to regularly wear district-provided uniforms are entitled to reimbursement for the actual cost of professional uniform cleaning in an amount not to exceed \$45.00 per month.

- D. Cell Phone Allowance. In lieu of providing a district-owned cellular phone to an employee whose duties require it, the chief appraiser is authorized to pay a monthly cellular phone allowance as follows: \$10 to \$45 per month, depending on the number of minutes of business use projected, for basic cellular service, and an additional \$50 per month for data services if the chief appraiser determines that data services are appropriate. An employee who receives a cellular phone allowance under this provision must, at his or her own expense, obtain equipment and cellular services meeting minimum specifications that are approved by the chief appraiser or his designee. The equipment and service must be in working order at all times during the period for which an allowance is paid. The total amount paid under this provision may not exceed the amount allocated in this budget for cellular phone and data services.

- E. Travel Expenses.

1. Non-overnight Travel.

- a. The chief appraiser, a member of the board of directors, a district employee, or a person assigned to the district by another agency under contract who has been designated to represent the chief appraiser or a board member, or a district employee who is traveling with the chief appraiser or a board member may receive reimbursement of actual expenses for meals when traveling outside the district's boundaries. The meal receipts must be attached to the travel expense report if the amount claimed for a meal exceeds \$9.00.
- b. Other employees may be reimbursed for meal expenses incurred on a day the employee conducts official business outside the district's boundaries for no fewer than six consecutive hours on the day the expenses are incurred in an amount not to exceed \$36 per day. However, the maximum reimbursement for breakfast may not exceed \$9.00, exceed \$17 for lunch, or exceed \$19 for dinner. Meal receipts must be attached to the travel expense report if the amount claimed for a meal exceeds \$9.00.

2. Overnight Travel.

- a. The chief appraiser, a member of the board of directors, a district employee, or a district employee who is traveling with the chief appraiser or a board member may receive reimbursement for actual expenses for meals, lodging, and incidental expenses authorized by this section. In lieu of claiming actual expenses, a person may elect to be reimbursed in the manner provided for in subsection 2.b. of this section.
- b. Employees and members of the board of directors who elect to do so, may be reimbursed for actual expenses of lodging at a commercial lodging establishment and an allowance for meals in an amount not to exceed the maximum per diem allowance authorized for that locality in the current federal travel regulations unless the chief appraiser determines, in advance of the travel, that local conditions necessitate a change in the lodging rate for a particular location. An employee may reduce the maximum meal reimbursement rate for a locality and use the reduction to increase the maximum lodging reimbursement rate for the locality, and may also be reimbursed for authorized incidental expenses. In calculating the applicable meal allowance for a particular locality, the amounts allowed for the first and last day of travel are reduced to 50% of the daily federal rate if the person begins travel after 1 p.m. on the first day or returns and ends travel before 1 p.m. on the last day.
- c. A person authorized to be reimbursed for overnight travel expenses may receive reimbursement for the person's actual expenses for meals and lodging when traveling outside the continental United States.
- d. Persons who are authorized to claim actual expenses and elect to do so must provide lodging and meal receipts with their travel expense report. An employee who claims expenses on a per diem basis must submit lodging receipts with the travel expense report.
- e. Allowable incidental expenses include taxes levied on lodging, taxi fare, airport limousine service, airport or other parking charges, and business-related telephone calls and/or reasonable internet connection charges. Receipts for incidental expenses must be attached to the travel expense report.

3. Transportation Expenses.

- a. Employees and board members who travel outside the district by personal auto will be reimbursed for mileage at the same rate used for in-district mileage. Travel must be by the most direct route. If two or more employees are attending the same business function, they should travel together if possible to minimize mileage expense. A person's total mileage reimbursement for a trip may not exceed the cost of round trip air travel by coach or economy class. The chief appraiser may require an employee traveling outside the district to use a district-owned vehicle instead of the employee's personal vehicle or other form of conveyance.
- b. Persons who travel by air must fly coach or economy class. All flight arrangements should be made through the district's travel coordinator in the Office of Chief Appraiser.

4. Purchase of Alcoholic Beverages Prohibited. A person who travels on official business may not claim reimbursement from district funds for the purchase of alcoholic beverages.
 5. Completion of Travel Expense Reports. After completion of authorized out-of-district travel, the person may not be reimbursed for travel expenses until the person submits a written travel report on the form prescribed by the chief appraiser. The form must clearly outline the official purpose of the travel and summarize, on a daily basis, the duties performed and expenses incurred or per diem claimed.
- F. Reappropriations. Monies received by the district as payment for copying charges are reappropriated to the district to offset the cost of making such copies. Monies received by the district under a Grant or Interlocal Contract are appropriated to the district to pay the cost of conducting the activity or activities authorized by such Grant or Contract. To the extent penalties may be imposed under any section of the Tax Code, penalty monies actually received are reappropriated to the district to offset the cost of operations, less any amounts required by law to be remitted to the appropriate taxing units.
- G. Vanpool Subsidy. The district is a member of the METRO STAR Vanpool program. Employees who participate are authorized a monthly subsidy of \$35.00. Participation is limited to an appropriation of \$42,000.
- H. Employee Recognition Activities. There is appropriated the sum of \$12,000 to be used for service awards and other employee recognition activities as approved by the board of directors.
- I. General Counsel. Pursuant to §6.05(j), Property Tax Code, the board may employ a general counsel to the district to serve at the will of the board. The general counsel shall provide counsel directly to the board and perform other duties and responsibilities as determined by the board. The general counsel is entitled to compensation as authorized by the board and funds are provided in Account 5520 - Legal Services.

EMPLOYEE BENEFITS SCHEDULE
GENERAL & SPECIAL PROVISIONS

- A. Health and Dental Benefits. The district provides health and dental benefits for all full time regular employees. New employees are covered on the first day of the month following a 30-day waiting period. Under the district's Flexible Benefits Plan, employees may select from a variety of coverage, but must select basic health coverage. The cost of coverage selections under the plan, which exceeds the provided allowance, is borne by the employee. The board of directors determines the amount of the allowance for employees and retirees when health and dental contracts are renewed near the end of the year. Eligible retirees may continue coverage under the district's health plan until age 65 or eligible for Medicare. Retirees eligible for Medicare may enroll in a Medicare Supplement Plan offered by the Texas Association of Counties.
- B. Life and Disability Insurance. The district also provides life and disability insurance to all full time regular employees. The cost of life and disability insurance for the employee is paid by the district. Employees may purchase additional life and accidental death insurance for themselves and their dependents under the Flexible Benefits Plan. Retirees are not eligible for coverage under the life and disability plans.
- C. Texas County & District Retirement System (TCDRS). This budget provides funding for the employee retirement plan. The employee contribution rate is 7% of salary and the district contribution rate is composed of a TCDRS actuarial determination plus an amount for an annuitant COLA if authorized by the board of directors, and the supplemental death benefit component. The TCDRS Supplemental Death Benefits Fund provides for a lump-sum death benefit payment to the beneficiary of a deceased employee-member equal to a year's salary in addition to a return of the deceased's personal deposits and interest earnings or a Deferred Service Retirement pension benefit. Upon the death of a retired member, the beneficiary is provided a lump-sum payment equal to \$5,000.
- D. Workers' Compensation Insurance. All full time regular and part-time employees, and members of the board of directors and appraisal review board are protected with workers' compensation insurance. This budget provides coverage through participation in the Texas Municipal League Intergovernmental Risk Pool.
- E. Unemployment Insurance. The district provides unemployment insurance for all district employees.
- F. Social Security. District employees do not participate in the federal Old Age, Survivors, and Disability Insurance (OASDI) program. Part-time employees who are not members of the Texas County & District Retirement System are required to contribute to Social Security. This budget provides for the employer's matching amount.
- G. Federal Medicare Coverage. Most district employees participate in the Medicare portion of the Federal Insurance Contribution Act (Social Security). Employees contribute to this program at a rate of 1.45% of wages paid. Funding is provided in this budget for the employer's matching amount.

- H. Longevity Pay. All full time regular employees, beginning with the first pay period after their first year of service with the district, are entitled to longevity pay calculated on the basis of \$5.00 per month per year of service, not to exceed \$150.00 per month. Employees returning to employment with the district after a break in service of less than five years are not entitled to longevity pay until after completing one year of continuous service. After the one-year waiting period, the employee's prior service of whole years is included in the calculation of longevity pay.
- I. Sick Leave. All full time regular employees are entitled to sick leave subject to the following conditions:
1. An employee will earn sick leave entitlement beginning with the first day of employment with the district and ending on the last day of duty. Sick leave entitlement shall be earned at the rate of 3.6920 hours per regular pay period, not to exceed 12 days per year, and shall accumulate with the unused amount of such leave carried forward each pay period. Unpaid time does not earn sick leave.
 2. Sick leave may be taken any time after accrual, subject to the terms set forth in the district's sick leave policy.
 3. An employee who resigns, is dismissed, or separated from district employment may not be paid for unused sick leave, but the estate of a district employee who dies while employed by the district shall be paid one-half of the employee's unused sick leave, or for 80 hours of sick leave, whichever is less.
- J. Employee Vacations. All full time regular employees are entitled to vacation leave. Such entitlement is calculated on 26 pay periods per year in accordance with the following schedule:

<u>Years of District Service</u>	<u>Hours Earned Per Pay Period</u>	<u>Maximum Hours That Carry Over To Next Year</u>
First 2 years	3.23	168
2 to under 5 years	3.69	288
5 to under 10 years	4.15	324
10 to under 15 years	4.61	360
15 to under 20 years	5.53	432
20 to under 25 years	6.46	504
25 to under 30 years	7.38	576
30 or more years	8.30	647

Vacation with pay may not be granted until the employee has had continuous employment with the district for six months, although credit will be earned during that period. The chief appraiser may authorize additional unpaid vacation leave as a supplement to vacation with pay. An employee who resigns, is dismissed, or separated from district employment is entitled to be paid for all vacation time duly accrued at the time of separation, provided the employee has had continuous employment with the district for six months. For an employee who has a break in service, total HCAD employment is calculated in the same manner as with longevity pay. After a one-year waiting period, the employee's prior service of whole years is included in the calculation of vacation hours.

- K. Emergency Leave. The chief appraiser may grant emergency leave of up to three working days to a full time regular employee because of a death of the employee's spouse, parent, step-parent, child, step-child, brother, sister, grandparent, grandchild, spouse's parent, or spouse's children. The chief appraiser may grant leave for any other purpose that justifies emergency leave.
- L. Other Paid Leaves. Full time regular employees of the district are entitled to paid leaves for holidays, military duty, and jury duty in accordance with the district's policy on such leaves.

APPRAISAL REVIEW BOARD PROVISIONS

The Appraisal Review Board of Harris County (ARB) is authorized by Section 6.41 of the Texas Property Tax Code as an entity separate from the Harris County Appraisal District. The Code contains provisions about the separation of the two entities, and requires the board of directors to fund certain activities of the appraisal review board. ARB members are not employees of the district and are not eligible for appointment to the ARB if ever employed by the district. Other restrictions apply.

A. Appraisal Review Board Member Per Diem and Duties and Per Diem of ARB Officers.

1. ARB members are compensated at a flat per diem rate for each full day or half day of service on the appraisal review board that equals or exceeds eight hours, exclusive of lunch. A full day is defined as greater than four hours, exclusive of lunch. A half day is defined as less than four hours, exclusive of lunch. ARB members attending ARB meetings will receive half day per diem. ALG "ARB Leadership Group" team leaders will receive an additional \$49.50 per month for meeting attendance. The per diem rate for such members shall be paid as follows:

Years of Board Service	Full Day Per Diem	Half Day Per Diem
1st or 2nd Year	\$162 per full day	\$81 per half day
3rd or 4th Year	\$180 per full day	\$90 per half day
5 th Year or more	\$198 per full day	\$99 per half day

The board of directors may provide a per diem of up to \$205 per full day for the chairman of the ARB. Service shall mean sitting as a member of a panel, participating at a meeting of the full board, or attending training required by law or approved by the board of directors. The board of directors may provide that service for an officer or member of the ARB includes such other activities as the board may prescribe. The chairman of the appraisal review board determines panel and training schedules for ARB members in consultation with the ARB administrator.

2. A member must serve more than four hours, exclusive of lunch, and be discharged for the day by ARB Support personnel or by the ARB Executive office to receive the full day per diem. It is anticipated that members will serve the time required to properly discharge their obligations. For service of four hours or less, a member shall receive the half day per diem. Regardless of the number of hours served in excess of eight in a 24-hour period, a member will not be compensated at more than the full day per diem rate specified above.

B. Appropriation for ARB Member Per Diem and Related Items

1. Appropriation for ARB member per diem compensation is \$2,700,000.
2. Appropriation for ARB member coverage for Workers' Compensation Insurance is \$48,600.

- C. Appropriation for Appraisal Review Board Attorney. The Appraisal Review Board shall use the services of the county attorney for legal counsel. In the event the county attorney is unable or declines to represent the board in a lawsuit to which the board is made a party, the board may employ and compensate private counsel, subject to a total appropriation of \$5,000.
- D. Appropriation for Clerical Assistance. The appraisal office provides clerical assistance to the appraisal review board, including assisting the board with the scheduling and arranging of hearings. The appropriation for clerical assistance appears elsewhere in this budget.
- E. Appropriation for Texas Comptroller ARB Training. The Property Tax Code provides for the Texas State Comptroller to provide mandatory training of ARB members. The amount of \$12,500 is appropriated for that purpose.
- F. Appropriation for TALCB Licensed Appraiser Instruction. The ARB may contract with a Texas Appraiser Licensing and Certification Board (TALCB) licensed appraiser to instruct the members of the appraisal review board on valuation methodology if an appropriation for the instruction is provided. The amount of \$3,500 is appropriated for that purpose.
- G. A member of the board of directors, the chief appraiser, or any other employee of the district may not communicate with a member of the appraisal review board about a course provided by the Comptroller or any other matter presented or discussed in training. In addition, the Property Tax Code prohibits communication with the appraisal review board by an officer or employee of a taxing unit or by an attorney who represents or whose law firm represents the appraisal district or a taxing unit that participates in the appraisal district.

2016 CAPITAL EXPENDITURES

ORG	ACCT	ITEM	QTY	NEW (N) REPL (R)	UNIT COST	TOTAL COST
8006	6501	Field Appraiser Mobile Devices	150	N	1,000	150,000
						<u>\$150,000</u>

2016 ESTIMATED COST ALLOCATION TO TAXING UNITS

The Harris County Appraisal District is funded by the taxing units it serves. As provided in Section 6.06(d), Tax Code, "(E)ach taxing unit participating in the district is allocated a portion of the budget equal to the proportion that the total dollar amount of property taxes imposed in the district by the unit for the tax year in which the budget proposal is prepared bears to the sum of the total dollar amount of property taxes imposed in the district by each participating unit for that year."

Section 6.06(d), Tax Code, requires "(E)ach taxing unit shall pay its allocation in four equal payments to be made at the end of each calendar quarter, and the first payment shall be made before January 1 of the year in which the budget takes effect." It has been the practice of the Harris County Appraisal District to invoice the taxing units for their quarterly payments approximately 45 days prior to the due date. Since the first quarter billing for 2016 will be prepared and delivered on or about November 15, 2015, and before the time some 2015 tax rates have been determined or received, the first quarter 2016 will be invoiced using incomplete information. The second quarter invoice will reflect the necessary corrections.

This estimate is prepared in May 2015 using 2014 tax rates and levies.

ESTIMATED 2016 COST ALLOCATION TO TAXING UNITS

Jur No.	Taxing Unit	Tax Year	Taxable Value as of 04/10/2015	Tax Rate	Total Levy	Frozen Levy Loss	Adjusted Levy	Allocation Ratio	2016 Budget Allocation
<u>SCHOOL DISTRICTS</u>									
001	HOUSTON ISD	2014	\$139,720,642,091	1.20	\$1,672,036,924	\$43,443,648	\$1,628,593,276	0.1730009	\$13,502,874
002	DEER PARK ISD	2014	7,692,988,751	1.56	119,756,756	746,863	119,009,893	0.0126421	986,726
003	WALLER ISD	2014	909,335,491	1.44	13,094,431	294,783	12,799,648	0.0013597	106,124
004	CYPRESS FAIRBANKS ISD	2014	40,388,412,860	1.44	581,593,145	6,163,340	575,429,805	0.0611263	4,770,962
005	CROSBY ISD	2014	1,568,312,947	1.67	26,190,826	845,106	25,345,720	0.0026924	210,145
006	CHANNELVIEW ISD	2014	2,743,230,035	1.45	39,694,539	496,240	39,198,299	0.0041639	324,998
007	NEW CANEY ISD	2014	59,044,628	1.67	986,045	48,919	937,126	0.0000995	7,770
008	ALIEF ISD	2014	12,737,477,963	1.28	163,039,718	891,029	162,148,689	0.0172246	1,344,395
009	ALDINE ISD	2014	17,163,889,241	1.29	220,708,392	1,125,493	219,582,899	0.0233257	1,820,590
015	GALENA PARK ISD	2014	7,445,234,731	1.51	112,676,182	1,386,571	111,289,611	0.0118220	922,716
016	GOOSE CREEK ISD	2014	6,718,698,186	1.43	96,204,367	999,109	95,205,258	0.0101134	789,359
017	KLEIN ISD	2014	15,843,057,379	1.39	220,218,498	3,893,050	216,325,448	0.0229796	1,793,582
018	HUMBLE ISD	2014	12,825,557,802	1.52	194,948,479	4,677,889	190,270,590	0.0202119	1,577,558
019	KATY ISD	2014	16,336,060,647	1.53	249,386,302	2,658,440	246,727,862	0.0262092	2,045,652
020	LA PORTE ISD	2014	7,217,486,613	1.45	104,653,556	292,600	104,360,956	0.0110860	865,270
021	PASADENA ISD	2014	11,057,943,074	1.35	149,282,231	4,005,477	145,276,754	0.0154323	1,204,508
023	SHELDON ISD	2014	4,916,942,214	1.43	70,312,274	93,966	70,218,308	0.0074591	582,189
024	SPRING ISD	2014	9,040,754,840	1.51	136,515,398	2,496,102	134,019,296	0.0142365	1,111,171
025	SPRING BRANCH ISD	2014	24,269,879,915	1.39	338,443,475	15,620,376	322,823,099	0.0342926	2,676,567
026	TOMBALL ISD	2014	7,279,131,339	1.36	98,996,186	1,255,645	97,740,541	0.0103827	810,379
027	CLEAR CREEK ISD	2014	12,065,020,532	1.40	168,910,287	3,943,656	164,966,631	0.0175239	1,367,759
028	DAYTON ISD	2014	3,112,416	1.20	37,287	737	36,550	0.0000039	303
029	PEARLAND ISD	2014	143,767,979	1.42	2,035,323	145,536	1,889,787	0.0002007	15,668
030	HUFFMAN ISD	2014	933,966,053	1.40	13,075,525	312,716	12,762,809	0.0013558	105,818
031	STAFFORD MSD	2014	6,521,709	1.24	80,872	4,945	75,927	0.0000081	630
<u>COUNTY-WIDE UNITS</u>									
040	HARRIS COUNTY	2014	350,426,248,751	0.42	1,462,363,779	0	1,462,363,779	0.1553428	12,124,644
041	HARRIS COUNTY FLOOD CONTROL	2014	339,595,961,614	0.03	92,913,455	0	92,913,455	0.0098699	770,357
042	PORT OF HOUSTON AUTHORITY	2014	339,534,217,232	0.02	51,982,689	0	51,982,689	0.0055220	430,995
043	HARRIS COUNTY HOSPITAL DIST	2014	339,597,713,405	0.17	577,316,113	0	577,316,113	0.0613267	4,786,601
044	HARRIS COUNTY DPT OF EDUCATION	2014	350,587,421,157	0.01	21,031,739	0	21,031,739	0.0022341	174,377
<u>COLLEGE DISTRICTS</u>									
045	LONE STAR COLLEGE SYSTEM DISTRICT	2014	111,013,305,498	0.11	120,005,383	594,709	119,410,674	0.0126847	990,049
046	LEE JR COLLEGE DISTRICT	2014	6,597,524,957	0.26	17,199,748	0	17,199,748	0.0018271	142,605
047	SAN JACINTO COMMUNITY COLLEGE DISTRICT	2014	44,197,699,966	0.19	82,031,815	0	82,031,815	0.0087140	680,136
048	HOUSTON COMMUNITY COLLEGE SYSTEM	2014	156,627,206,023	0.11	167,418,821	0	167,418,821	0.0177844	1,388,091
<u>CITIES</u>									
051	CITY OF BAYTOWN	2014	2,625,266,841	0.82	21,580,481	0	21,580,481	0.0022924	178,927
052	CITY OF BELLAIRE	2014	4,001,588,983	0.39	15,750,254	0	15,750,254	0.0016731	130,587

ESTIMATED 2016 COST ALLOCATION TO TAXING UNITS

Jur No.	Taxing Unit	Tax Year	Taxable Value as of 04/10/2015	Tax Rate	Total Levy	Frozen Levy Loss	Adjusted Levy	Allocation Ratio	2016 Budget Allocation
053	CITY OF BUNKER VILLAGE	2014	1,725,484,374	0.28	4,880,619	0	4,880,619	0.0005185	40,466
054	CITY OF DEER PARK	2014	2,106,616,439	0.72	15,167,638	0	15,167,638	0.0016112	125,757
055	CITY OF HEDWIG VILLAGE	2014	809,848,461	0.20	1,590,818	0	1,590,818	0.0001690	13,190
056	CITY OF EL LAGO	2014	195,227,407	0.61	1,199,087	0	1,199,087	0.0001274	9,942
057	CITY OF GALENA PARK	2014	419,517,479	1.05	4,394,236	0	4,394,236	0.0004668	36,433
058	CITY OF FRIENDSWOOD	2014	529,150,878	0.59	3,129,398	0	3,129,398	0.0003324	25,946
059	CITY OF PEARLAND	2014	561,118,906	0.71	3,995,728	125,590	3,870,138	0.0004111	32,088
060	CITY OF HILSHIRE VILLAGE	2014	170,616,446	0.53	910,138	0	910,138	0.0000967	7,546
061	CITY OF HOUSTON	2014	186,304,942,423	0.63	1,175,733,231	0	1,175,733,231	0.1248948	9,748,154
062	CITY OF HUMBLE	2014	1,493,344,390	0.20	2,986,689	0	2,986,689	0.0003173	24,763
063	CITY OF KATY	2014	617,534,027	0.55	3,376,182	0	3,376,182	0.0003586	27,992
064	CITY OF MISSOURI CITY	2014	209,407,609	0.57	1,183,153	0	1,183,153	0.0001257	9,810
065	CITY OF HUNTERS CREEK VILLAGE	2014	2,241,203,608	0.18	4,125,652	0	4,125,652	0.0004383	34,206
066	CITY OF JACINTO CITY	2014	351,920,478	0.80	2,815,037	0	2,815,037	0.0002990	23,340
067	CITY OF LEAGUE CITY	2014	122,055,684	0.60	728,672	0	728,672	0.0000774	6,042
070	CITY OF JERSEY VILLAGE	2014	940,319,792	0.74	6,981,874	0	6,981,874	0.0007417	57,888
071	CITY OF LA PORTE	2014	2,773,696,033	0.71	19,693,242	0	19,693,242	0.0020920	163,279
072	CITY OF MORGANS POINT	2014	202,374,654	0.82	1,657,693	0	1,657,693	0.0001761	13,744
073	CITY OF NASSAU BAY	2014	519,932,694	0.74	3,858,525	0	3,858,525	0.0004099	31,992
074	CITY OF PASADENA	2014	6,717,378,886	0.58	38,752,827	179,453	38,573,374	0.0040975	319,817
075	CITY OF PINEY POINT VILLAGE	2014	2,031,087,040	0.26	5,182,115	0	5,182,115	0.0005505	42,966
076	CITY OF SEABROOK	2014	946,427,666	0.64	6,057,421	73,618	5,983,803	0.0006356	49,612
077	CITY OF SHOREACRES	2014	102,472,632	0.84	865,259	0	865,259	0.0000919	7,174
078	CITY OF SOUTH HOUSTON	2014	546,900,534	0.64	3,524,911	28,486	3,496,425	0.0003714	28,989
079	CITY OF SOUTHSIDE PLACE	2014	561,559,179	0.34	1,893,347	0	1,893,347	0.0002011	15,698
080	CITY OF SPRING VALLEY	2014	846,705,769	0.49	4,130,595	0	4,130,595	0.0004388	34,247
082	CITY OF TAYLOR LAKE VILLAGE	2014	360,002,501	0.33	1,190,168	0	1,190,168	0.0001264	9,868
083	CITY OF TOMBALL	2014	1,538,627,936	0.34	5,253,722	0	5,253,722	0.0005581	43,559
084	CITY OF WEBSTER	2014	1,670,329,211	0.25	4,154,777	4,686	4,150,091	0.0004409	34,409
085	CITY OF WEST UNIVERSITY PLACE	2014	4,813,843,305	0.36	17,416,004	0	17,416,004	0.0018501	144,398
086	CITY OF WALLER	2014	75,661,727	0.54	406,228	0	406,228	0.0000432	3,368
<u>SPECIAL DISTRICTS</u>									
100	HARRIS COUNTY MUD 421	2014	9,873,437	1.25	123,418	0	123,418	0.0000131	1,023
101	ADDICKS UD	2014	215,179,899	0.66	1,409,428	0	1,409,428	0.0001497	11,686
105	HARRIS COUNTY MUD 264	2014	202,827,276	0.25	507,068	0	507,068	0.0000539	4,204
106	HARRIS COUNTY MUD 502	2014	3,921,840	1.50	58,828	0	58,828	0.0000062	488
108	HARRIS COUNTY MUD 255	2014	185,455,786	0.28	519,276	0	519,276	0.0000552	4,305
110	BAKER ROAD MUD	2014	240,503,598	0.38	901,888	0	901,888	0.0000958	7,478
111	BAMMEL UD	2014	127,620,362	0.43	548,768	0	548,768	0.0000583	4,550
112	BARKER CYPRESS MUD	2014	267,864,892	0.90	2,410,784	0	2,410,784	0.0002561	19,988

ESTIMATED 2016 COST ALLOCATION TO TAXING UNITS

Jur No.	Taxing Unit	Tax Year	Taxable Value as of 04/10/2015	Tax Rate	Total Levy	Frozen Levy Loss	Adjusted Levy	Allocation Ratio	2016 Budget Allocation
115	HARRIS COUNTY MUD 499	2014	10,452,568	0.87	90,824	0	90,824	0.0000096	753
116	BEECHNUT MUD	2014	54,367,850	0.81	440,380	0	440,380	0.0000468	3,651
117	BILMA PUD	2014	394,949,190	0.57	2,251,210	0	2,251,210	0.0002391	18,665
118	BISSONNET MUD	2014	284,504,734	0.59	1,678,578	0	1,678,578	0.0001783	13,917
120	WEST RANCH MANAGEMENT DISTRICT	2014	0	0.65	0	0	0	0.0000000	0
121	BRIDGESTONE MUD	2014	1,067,416,620	0.71	7,578,658	0	7,578,658	0.0008051	62,836
124	BAYBROOK MUD	2014	243,837,283	1.11	2,706,594	0	2,706,594	0.0002875	22,441
125	THE WOODLANDS TOWNSHIP	2014	1,658,384,350	0.25	4,145,961	0	4,145,961	0.0004404	34,375
128	HARRIS COUNTY MUD 250	2014	44,133,750	1.26	556,085	0	556,085	0.0000591	4,611
129	HARRIS COUNTY MUD 276	2014	303,210,554	0.71	2,152,795	0	2,152,795	0.0002287	17,849
131	CNP UTILITY DISTRICT	2014	501,076,122	0.32	1,603,444	0	1,603,444	0.0001703	13,294
134	CASTLEWOOD MUD	2014	163,840,711	0.70	1,146,885	0	1,146,885	0.0001218	9,509
135	CEDAR BAYOU PARK UD	2014	25,127,640	0.10	24,123	0	24,123	0.0000026	200
136	CHARTERWOOD MUD	2014	342,330,067	0.54	1,848,582	0	1,848,582	0.0001964	15,327
137	CHELFORD CITY MUD	2014	105,528,687	0.43	448,497	0	448,497	0.0000476	3,719
138	CHELFORD ONE MUD	2014	155,072,908	0.57	876,162	0	876,162	0.0000931	7,264
139	CHIMNEY HILL MUD	2014	295,860,663	0.85	2,514,816	0	2,514,816	0.0002671	20,851
140	CIMARRON MUD	2014	522,545,267	0.57	2,978,508	0	2,978,508	0.0003164	24,695
141	CLAY ROAD MUD	2014	136,843,759	0.87	1,190,541	0	1,190,541	0.0001265	9,871
142	CLEAR LAKE CITY WATER AUTHOR	2014	4,597,161,871	0.28	12,872,053	0	12,872,053	0.0013674	106,724
145	CORNERSTONE MUD	2014	303,939,647	0.34	1,033,395	0	1,033,395	0.0001098	8,568
146	CROSBY MUD	2014	221,698,507	0.55	1,219,342	0	1,219,342	0.0001295	10,110
147	CY - CHAMP PUD	2014	426,357,233	0.47	1,995,352	0	1,995,352	0.0002120	16,544
148	CYPRESS CREEK UD	2014	155,982,897	0.18	280,769	0	280,769	0.0000298	2,328
149	CYPRESS FOREST PUD	2014	599,011,231	0.32	1,928,217	0	1,928,217	0.0002048	15,987
150	CYPRESS HILL MUD 1	2014	588,871,483	0.87	5,123,182	0	5,123,182	0.0005442	42,477
151	CYPRESS KLEIN UD	2014	222,858,702	0.20	445,717	0	445,717	0.0000473	3,695
152	CYPRESSWOOD UD	2014	138,271,953	0.36	497,779	0	497,779	0.0000529	4,127
153	CAMFIELD MUD	2014	15,196,364	0.50	75,982	0	75,982	0.0000081	630
154	LOWER KIRBY PEARLAND MGMT DISTRICT	2014	89,904,631	0.10	89,905	0	89,905	0.0000096	745
156	HARRIS COUNTY MUD 278	2014	300,079,756	1.09	3,270,869	0	3,270,869	0.0003475	27,119
159	HARRIS COUNTY MUD 290	2014	549,788,422	0.99	5,442,905	0	5,442,905	0.0005782	45,128
161	MEADOWHILL REGIONAL MUD	2014	329,247,187	0.79	2,601,053	0	2,601,053	0.0002763	21,566
162	DOWDELL PUD	2014	217,063,857	0.92	1,996,987	0	1,996,987	0.0002121	16,557
163	EL DORADO UD	2014	87,946,610	0.58	510,090	0	510,090	0.0000542	4,229
164	EMERALD FOREST UD	2014	292,683,898	0.68	1,990,251	0	1,990,251	0.0002114	16,501
165	ENCANTO REAL UD	2014	77,490,819	0.99	765,222	0	765,222	0.0000813	6,345
170	HARRIS COUNTY MUD 286	2014	525,116,989	0.16	840,187	0	840,187	0.0000893	6,966
171	FALLBROOK UD	2014	189,564,110	0.35	663,474	0	663,474	0.0000705	5,501
172	FAULKY GULLY MUD	2014	512,348,636	0.49	2,510,508	0	2,510,508	0.0002667	20,815

ESTIMATED 2016 COST ALLOCATION TO TAXING UNITS

Jur No.	Taxing Unit	Tax Year	Taxable Value as of 04/10/2015	Tax Rate	Total Levy	Frozen Levy Loss	Adjusted Levy	Allocation Ratio	2016 Budget Allocation
174	FOREST HILLS MUD	2014	61,967,013	1.25	774,588	0	774,588	0.0000823	6,422
175	FOUNTAINHEAD MUD	2014	209,635,705	0.65	1,362,632	0	1,362,632	0.0001447	11,298
176	FRY ROAD MUD	2014	239,843,931	0.49	1,163,243	0	1,163,243	0.0001236	9,645
177	HARRIS COUNTY MUD 415	2014	17,277,535	0.80	138,220	0	138,220	0.0000147	1,146
178	HARRIS COUNTY ID 18	2014	645,912,494	1.50	9,688,687	0	9,688,687	0.0010292	80,330
179	HARRIS COUNTY MUD 304	2014	171,739,655	0.85	1,459,787	0	1,459,787	0.0001551	12,103
180	HARRIS COUNTY MUD 275	2014	64,643,027	0.90	581,787	0	581,787	0.0000618	4,824
182	GRANT ROAD PUD	2014	257,676,337	0.63	1,610,477	0	1,610,477	0.0001711	13,353
183	GREENWOOD UD	2014	80,546,418	0.99	797,410	0	797,410	0.0000847	6,611
185	GREENS TRAIL MUD	2014	237,356,717	0.20	474,713	0	474,713	0.0000504	3,936
186	GREENS PARKWAY MUD	2014	575,865,614	0.51	2,936,915	0	2,936,915	0.0003120	24,350
187	HARRIS COUNTY MUD 287	2014	124,414,658	1.35	1,679,598	0	1,679,598	0.0001784	13,926
189	HARRIS COUNTY MUD 489	2014	88,673	1.00	887	0	887	0.0000001	7
190	HARRIS COUNTY MUD 284	2014	147,176,817	1.03	1,515,921	0	1,515,921	0.0001610	12,569
193	HARRIS COUNTY MUD 285	2014	523,311,405	0.90	4,709,803	0	4,709,803	0.0005003	39,050
197	HARRIS COUNTY MUD 401	2014	160,886,336	1.19	1,906,503	0	1,906,503	0.0002025	15,807
200	HARRIS COUNTY FWSD 1A	2014	36,040,980	0.55	198,225	0	198,225	0.0000211	1,644
205	HARRIS COUNTY MUD 321	2014	129,828,792	1.05	1,363,202	0	1,363,202	0.0001448	11,302
206	HARRIS COUNTY FWSD 6	2014	538,700,008	0.23	1,239,010	0	1,239,010	0.0001316	10,273
207	HARRIS COUNTY MUD 282	2014	113,123,581	1.11	1,255,672	0	1,255,672	0.0001334	10,411
208	HARRIS COUNTY MUD 316	2014	93,673,284	0.60	562,040	0	562,040	0.0000597	4,660
213	HARRIS COUNTY MUD 322	2014	226,082,345	0.60	1,356,494	0	1,356,494	0.0001441	11,247
220	HARRIS COUNTY MUD 342	2014	219,236,479	0.85	1,863,510	0	1,863,510	0.0001980	15,451
222	HARRIS COUNTY MUD 344	2014	319,415,560	1.00	3,194,156	0	3,194,156	0.0003393	26,483
224	HARRIS COUNTY MUD 345	2014	458,602,446	0.35	1,593,643	0	1,593,643	0.0001693	13,213
225	HARRIS COUNTY MUD 346	2014	123,668,790	0.10	123,669	0	123,669	0.0000131	1,025
227	HARRIS COUNTY FWSD 27	2014	53,518,656	0.71	377,307	0	377,307	0.0000401	3,128
228	HARRIS COUNTY MUD 404	2014	28,552,038	0.86	245,904	0	245,904	0.0000261	2,039
229	HARRIS COUNTY MUD 412	2014	291,488,014	1.08	3,148,071	0	3,148,071	0.0003344	26,101
230	HARRIS COUNTY MUD 407	2014	108,526,050	0.65	705,419	0	705,419	0.0000749	5,849
231	HARRIS COUNTY MUD 405	2014	27,391,531	1.30	356,090	0	356,090	0.0000378	2,952
232	HARRIS COUNTY MUD 433	2014	112,405,445	1.20	1,348,865	0	1,348,865	0.0001433	11,184
234	HARRIS COUNTY MUD 451	2014	33,747,717	0.88	296,980	0	296,980	0.0000315	2,462
235	HARRIS COUNTY MUD 459	2014	23,963,255	0.80	191,706	0	191,706	0.0000204	1,589
237	HARRIS COUNTY MUD 434	2014	25,113,604	1.25	313,920	0	313,920	0.0000333	2,603
238	HARRIS COUNTY MUD 439	2014	12,039,962	0.80	96,320	0	96,320	0.0000102	799
241	HARRIS COUNTY MUD 460	2014	31,323,558	0.74	231,794	0	231,794	0.0000246	1,922
242	HARRIS COUNTY MUD 450	2014	106,392,470	0.77	818,073	0	818,073	0.0000869	6,783
243	HARRIS COUNTY MUD 480	2014	33,615,415	1.48	497,508	0	497,508	0.0000528	4,125
246	HARRIS COUNTY MUD 432	2014	72,222,839	1.50	1,083,343	0	1,083,343	0.0001151	8,982

ESTIMATED 2016 COST ALLOCATION TO TAXING UNITS

Jur No.	Taxing Unit	Tax Year	Taxable Value as of 04/10/2015	Tax Rate	Total Levy	Frozen Levy Loss	Adjusted Levy	Allocation Ratio	2016 Budget Allocation
247	HARRIS COUNTY FWSD 47	2014	91,217,344	0.96	875,687	0	875,687	0.0000930	7,260
248	HARRIS COUNTY MUD 481	2014	77,550,932	1.20	930,611	0	930,611	0.0000989	7,716
249	HARRIS COUNTY MUD 406	2014	110,745,495	1.05	1,162,828	0	1,162,828	0.0001235	9,641
250	HARRIS COUNTY MUD 402	2014	2,554,032	1.25	31,925	0	31,925	0.0000034	265
251	HARRIS COUNTY FWSD 51	2014	420,809,720	0.30	1,262,429	0	1,262,429	0.0001341	10,467
253	BRAZORIA COUNTY MUD 18	2014	185,963,421	0.47	874,028	0	874,028	0.0000928	7,247
254	KINGS MANOR MUD	2014	63,105,291	0.79	498,532	0	498,532	0.0000530	4,133
255	HARRIS COUNTY MUD 501	2014	220,506,352	1.50	3,307,595	0	3,307,595	0.0003514	27,424
256	HARRIS COUNTY MUD 509	2014	4,082,541	0.85	34,702	0	34,702	0.0000037	288
257	HARRIS COUNTY MUD 500	2014	58,077,608	1.25	725,970	0	725,970	0.0000771	6,019
258	HARRIS COUNTY FWSD 58	2014	98,848,940	0.63	622,748	0	622,748	0.0000662	5,163
261	HARRIS COUNTY FWSD 61	2014	856,494,459	0.34	2,912,081	0	2,912,081	0.0003093	24,144
264	HARRIS COUNTY ID 1	2014	5,353,528,934	0.14	7,679,637	0	7,679,637	0.0008158	63,673
276	HARRIS COUNTY MUD 396	2014	279,446,116	1.06	2,962,129	0	2,962,129	0.0003147	24,559
301	HARRIS COUNTY MUD 1	2014	481,790,003	0.97	4,673,363	0	4,673,363	0.0004964	38,747
305	HARRIS COUNTY MUD 5	2014	131,639,859	1.27	1,671,826	0	1,671,826	0.0001776	13,861
306	HARRIS COUNTY MUD 6	2014	117,622,526	0.61	717,497	0	717,497	0.0000762	5,949
308	HARRIS COUNTY MUD 8	2014	137,365,183	0.64	879,137	0	879,137	0.0000934	7,289
311	HARRIS COUNTY MUD 11	2014	122,789,668	0.94	1,154,223	0	1,154,223	0.0001226	9,570
313	CLEAR BROOK CITY MUD	2014	719,775,158	0.67	4,822,494	0	4,822,494	0.0005123	39,984
316	HARRIS COUNTY MUD 16	2014	130,493,866	0.67	874,309	0	874,309	0.0000929	7,249
318	HARRIS COUNTY MUD 18	2014	232,710,294	0.42	977,383	0	977,383	0.0001038	8,104
319	HARRIS COUNTY MUD 494	2014	11,920,674	1.50	178,810	0	178,810	0.0000190	1,483
321	HARRIS COUNTY MUD 461	2014	136,867,916	0.80	1,094,943	0	1,094,943	0.0001163	9,078
323	HARRIS COUNTY MUD 23	2014	125,512,927	0.48	602,462	0	602,462	0.0000640	4,995
324	HARRIS COUNTY MUD 24	2014	555,777,733	0.57	3,167,933	0	3,167,933	0.0003365	26,266
325	HARRIS COUNTY MUD 25	2014	48,980,226	0.79	384,495	0	384,495	0.0000408	3,188
326	HARRIS COUNTY MUD 26	2014	472,275,526	0.80	3,778,204	0	3,778,204	0.0004013	31,326
327	HARRIS-WALLER CNTIES MUD 2	2014	10,333,086	0.95	98,164	0	98,164	0.0000104	814
331	HARRIS COUNTY MUD 529	2014	17,173,704	0.75	128,803	0	128,803	0.0000137	1,068
332	HARRIS COUNTY MUD 449	2014	9,589,582	1.50	143,844	0	143,844	0.0000153	1,193
333	HARRIS COUNTY MUD 33	2014	149,791,076	0.92	1,378,078	0	1,378,078	0.0001464	11,426
334	HARRIS COUNTY WCID 159	2014	581,069	0.50	2,905	0	2,905	0.0000003	24
336	HARRIS COUNTY MUD 36	2014	422,297,802	0.25	1,055,745	0	1,055,745	0.0001121	8,753
337	HARRIS COUNTY MUD 504	2014	7,008,348	1.39	97,416	0	97,416	0.0000103	808
338	HARRIS COUNTY ID 12	2014	10,557,527	0.55	58,066	0	58,066	0.0000062	481
339	HARRIS COUNTY MUD 530	2014	5,002,400	1.25	62,530	0	62,530	0.0000066	518
340	HARRIS COUNTY MUD 531	2014	1,801,984	1.35	24,327	0	24,327	0.0000026	202
341	PEARLAND MUNICIPAL MGMT DIST 2	2014	9,210,992	0.10	9,211	0	9,211	0.0000010	76
342	HARRIS COUNTY MUD 422	2014	33,002	1.50	495	0	495	0.0000001	4

ESTIMATED 2016 COST ALLOCATION TO TAXING UNITS

Jur No.	Taxing Unit	Tax Year	Taxable Value as of 04/10/2015	Tax Rate	Total Levy	Frozen Levy Loss	Adjusted Levy	Allocation Ratio	2016 Budget Allocation
343	HARRIS COUNTY MUD 43	2014	135,874,991	0.53	720,137	0	720,137	0.0000765	5,971
344	HARRIS COUNTY MUD 44	2014	134,638,920	0.43	578,947	0	578,947	0.0000615	4,800
345	HARRIS COUNTY ID 18 (DA 1)	2014	106,903,866	1.50	1,603,558	0	1,603,558	0.0001703	13,295
346	HARRIS COUNTY MUD 46	2014	188,887,789	0.54	1,019,994	0	1,019,994	0.0001084	8,457
347	NORTHAMPTON MUD (DA)	2014	10,765,269	0.64	68,898	0	68,898	0.0000073	571
348	HARRIS COUNTY MUD 48	2014	28,289,364	0.50	141,447	0	141,447	0.0000150	1,173
349	HARRIS COUNTY MUD 49	2014	275,983,468	0.97	2,677,040	0	2,677,040	0.0002844	22,196
350	HARRIS COUNTY MUD 50	2014	59,402,064	1.12	665,303	0	665,303	0.0000707	5,516
351	HARRIS COUNTY WCID 161	2014	180,128	0.85	1,531	0	1,531	0.0000002	13
353	HARRIS COUNTY MUD 53	2014	606,604,185	0.81	4,913,494	0	4,913,494	0.0005219	40,738
354	HARRIS-WALLER CNTIES MUD 3	2014	6,490	0.95	62	0	62	0.0000000	1
355	HARRIS COUNTY MUD 55	2014	687,491,640	0.40	2,749,967	0	2,749,967	0.0002921	22,800
356	HARRIS COUNTY MUD 495	2014	77,656	1.50	1,165	0	1,165	0.0000001	10
358	HARRIS COUNTY MUD 58	2014	65,928,100	0.95	626,317	0	626,317	0.0000665	5,193
359	HARRIS COUNTY MUD 537	2014	13,236,796	0.50	66,184	0	66,184	0.0000070	549
361	HARRIS COUNTY MUD 61	2014	198,134,323	0.57	1,129,366	0	1,129,366	0.0001200	9,364
362	HARRIS COUNTY MUD 62	2014	109,225,260	0.62	677,197	0	677,197	0.0000719	5,615
363	HARRIS COUNTY MUD 63	2014	334,018,278	0.52	1,736,895	0	1,736,895	0.0001845	14,401
364	HARRIS COUNTY MUD 64	2014	224,282,935	0.69	1,547,552	0	1,547,552	0.0001644	12,831
365	HARRIS COUNTY MUD 65	2014	198,346,993	0.93	1,844,627	0	1,844,627	0.0001959	15,294
366	GENERATION PARK MGMT DIST	2014	39,703,113	1.25	496,289	0	496,289	0.0000527	4,115
369	HARRIS COUNTY MUD 69	2014	135,679,861	0.40	542,719	0	542,719	0.0000577	4,500
370	HARRIS COUNTY MUD 70	2014	283,043,125	0.79	2,236,041	0	2,236,041	0.0002375	18,539
371	HARRIS COUNTY MUD 71	2014	486,320,832	1.06	5,155,001	0	5,155,001	0.0005476	42,741
379	HARRIS COUNTY MUD 381	2014	115,170,470	0.74	852,261	0	852,261	0.0000905	7,066
381	HARRIS COUNTY MUD 81	2014	451,629,782	0.37	1,671,030	0	1,671,030	0.0001775	13,855
382	HARRIS COUNTY MUD 82	2014	359,806,807	0.80	2,878,454	0	2,878,454	0.0003058	23,866
383	HARRIS COUNTY MUD 383	2014	321,738,174	0.89	2,863,470	0	2,863,470	0.0003042	23,741
384	HARRIS COUNTY MUD 397	2014	250,523,288	0.88	2,204,605	0	2,204,605	0.0002342	18,279
385	HARRIS COUNTY MUD 399	2014	61,379,101	1.21	742,687	0	742,687	0.0000789	6,158
386	HARRIS COUNTY MUD 86	2014	184,352,606	0.80	1,469,843	0	1,469,843	0.0001561	12,187
387	HARRIS COUNTY MUD 391	2014	376,131,770	1.26	4,739,260	0	4,739,260	0.0005034	39,294
388	HARRIS COUNTY MUD 393	2014	105,377,463	0.91	958,935	0	958,935	0.0001019	7,951
389	HARRIS COUNTY MUD 400	2014	352,688,450	1.07	3,773,766	0	3,773,766	0.0004009	31,289
392	HARRIS COUNTY MUD 411	2014	63,397,162	0.90	570,574	0	570,574	0.0000606	4,731
394	HARRIS COUNTY MUD 410	2014	156,843,282	0.69	1,082,219	0	1,082,219	0.0001150	8,973
395	HARRIS MONTGMRY CO MUD 386	2014	1,659,456,902	0.50	8,297,285	0	8,297,285	0.0008814	68,794
396	HARRIS COUNTY MUD 96	2014	196,061,943	1.27	2,489,987	0	2,489,987	0.0002645	20,645
399	HARRIS COUNTY MUD 420	2014	54,691,457	1.40	765,680	0	765,680	0.0000813	6,348
400	HARRIS COUNTY RID 1	2014	81,568,684	0.30	244,706	0	244,706	0.0000260	2,029

ESTIMATED 2016 COST ALLOCATION TO TAXING UNITS

Jur No.	Taxing Unit	Tax Year	Taxable Value as of 04/10/2015	Tax Rate	Total Levy	Frozen Levy Loss	Adjusted Levy	Allocation Ratio	2016 Budget Allocation
402	HARRIS COUNTY MUD 102	2014	381,978,155	0.70	2,673,847	0	2,673,847	0.0002840	22,169
404	HARRIS COUNTY MUD 104	2014	239,117,273	0.50	1,195,586	0	1,195,586	0.0001270	9,913
405	HARRIS COUNTY MUD 105	2014	252,050,779	0.90	2,268,457	0	2,268,457	0.0002410	18,808
406	HARRIS COUNTY MUD 106	2014	277,642,875	0.91	2,526,550	0	2,526,550	0.0002684	20,948
409	HARRIS COUNTY MUD 109	2014	443,335,865	0.52	2,305,346	0	2,305,346	0.0002449	19,114
418	HARRIS COUNTY MUD 118	2014	175,417,430	0.72	1,263,005	0	1,263,005	0.0001342	10,472
419	HARRIS COUNTY MUD 119	2014	179,235,193	0.49	869,291	0	869,291	0.0000923	7,207
420	HARRIS COUNTY MUD 120	2014	367,103,409	0.64	2,349,462	0	2,349,462	0.0002496	19,480
422	HARRIS COUNTY MUD 122	2014	70,942,947	0.75	532,072	0	532,072	0.0000565	4,411
427	HARRIS COUNTY MUD 127	2014	187,145,648	0.87	1,628,167	0	1,628,167	0.0001730	13,499
430	HARRIS COUNTY MUD 130	2014	458,161,804	0.62	2,840,603	0	2,840,603	0.0003017	23,552
432	HARRIS COUNTY MUD 132	2014	531,321,568	0.11	605,707	0	605,707	0.0000643	5,022
436	HARRIS COUNTY MUD 136	2014	203,517,774	0.20	398,895	0	398,895	0.0000424	3,307
444	HARRIS COUNTY MUD 144	2014	122,039,866	0.63	768,851	0	768,851	0.0000817	6,375
447	HARRIS COUNTY MUD 147	2014	89,342,070	0.91	813,013	0	813,013	0.0000864	6,741
448	HARRIS COUNTY MUD 148	2014	91,846,814	1.18	1,083,792	0	1,083,792	0.0001151	8,986
449	HARRIS COUNTY MUD 149	2014	139,932,912	0.52	727,651	0	727,651	0.0000773	6,033
450	HARRIS COUNTY MUD 150	2014	206,060,145	0.94	1,936,965	0	1,936,965	0.0002058	16,060
451	HARRIS COUNTY MUD 151	2014	424,030,434	0.42	1,780,928	0	1,780,928	0.0001892	14,766
452	HARRIS COUNTY MUD 152	2014	416,154,536	0.36	1,498,156	0	1,498,156	0.0001591	12,421
453	HARRIS COUNTY MUD 153	2014	509,686,334	0.46	2,344,557	0	2,344,557	0.0002491	19,439
454	HARRIS COUNTY MUD 154	2014	247,601,809	0.84	2,079,855	0	2,079,855	0.0002209	17,244
455	HARRIS COUNTY MUD 155	2014	110,427,885	0.92	1,015,937	0	1,015,937	0.0001079	8,423
456	HARRIS COUNTY MUD 156	2014	183,624,034	0.90	1,652,616	0	1,652,616	0.0001756	13,702
457	HARRIS COUNTY MUD 157	2014	439,131,426	0.80	3,513,051	0	3,513,051	0.0003732	29,127
458	HARRIS COUNTY MUD 158	2014	290,994,950	0.50	1,454,975	0	1,454,975	0.0001546	12,063
462	HARRIS COUNTY MUD 162	2014	139,453,022	0.55	766,992	0	766,992	0.0000815	6,359
463	HARRIS COUNTY MUD 163	2014	258,068,535	0.10	258,069	0	258,069	0.0000274	2,140
465	HARRIS COUNTY MUD 165	2014	765,568,967	1.32	10,105,510	0	10,105,510	0.0010735	83,786
466	HARRIS COUNTY MUD 166	2014	144,808,507	0.93	1,346,719	0	1,346,719	0.0001431	11,166
467	HARRIS COUNTY MUD 167	2014	401,044,326	1.20	4,812,532	0	4,812,532	0.0005112	39,901
468	HARRIS COUNTY MUD 168	2014	400,871,967	0.58	2,325,057	0	2,325,057	0.0002470	19,277
470	HARRIS COUNTY MUD 170	2014	154,988,397	0.29	449,466	0	449,466	0.0000477	3,727
472	HARRIS COUNTY MUD 172	2014	301,001,044	0.87	2,618,709	0	2,618,709	0.0002782	21,712
473	HARRIS COUNTY MUD 173	2014	286,250,977	0.63	1,803,381	0	1,803,381	0.0001916	14,952
479	HARRIS COUNTY MUD 179	2014	157,174,277	0.29	455,805	0	455,805	0.0000484	3,779
480	HARRIS COUNTY MUD 180	2014	153,056,439	0.83	1,270,368	0	1,270,368	0.0001349	10,533
482	HARRIS COUNTY MUD 182	2014	82,798,453	0.70	579,589	0	579,589	0.0000616	4,805
483	HARRIS COUNTY MUD 183	2014	170,239,163	0.53	902,268	0	902,268	0.0000958	7,481
484	HARRIS COUNTY MUD 382	2014	133,114,708	0.67	891,869	0	891,869	0.0000947	7,395

ESTIMATED 2016 COST ALLOCATION TO TAXING UNITS

Jur No.	Taxing Unit	Tax Year	Taxable Value as of 04/10/2015	Tax Rate	Total Levy	Frozen Levy Loss	Adjusted Levy	Allocation Ratio	2016 Budget Allocation
485	HARRIS COUNTY MUD 185	2014	76,225,196	0.62	468,785	0	468,785	0.0000498	3,887
486	HARRIS COUNTY MUD 186	2014	256,528,308	0.28	718,279	0	718,279	0.0000763	5,955
488	HARRIS COUNTY MUD 188	2014	342,388,167	0.49	1,677,702	0	1,677,702	0.0001782	13,910
489	HARRIS COUNTY MUD 189	2014	189,882,415	0.55	1,044,353	0	1,044,353	0.0001109	8,659
490	HARRIS COUNTY MUD 390	2014	227,585,246	0.70	1,593,097	0	1,593,097	0.0001692	13,209
491	HARRIS COUNTY MUD 191	2014	323,176,809	0.26	840,260	0	840,260	0.0000893	6,967
493	HARRIS COUNTY MUD 389	2014	123,140,783	1.31	1,613,144	0	1,613,144	0.0001714	13,375
496	HARRIS COUNTY MUD 196	2014	335,152,470	0.68	2,279,037	0	2,279,037	0.0002421	18,896
500	HARRIS COUNTY MUD 200	2014	222,263,838	0.65	1,433,602	0	1,433,602	0.0001523	11,886
501	HARRIS COUNTY MUD 374	2014	375,861,978	0.93	3,495,516	0	3,495,516	0.0003713	28,982
502	HARRIS COUNTY MUD 202	2014	133,655,704	1.25	1,670,696	0	1,670,696	0.0001775	13,852
504	HARRIS COUNTY MUD 371	2014	271,244,910	0.89	2,414,080	0	2,414,080	0.0002564	20,015
505	HARRIS COUNTY MUD 205	2014	40,126,692	0.87	349,102	0	349,102	0.0000371	2,894
506	HARRIS COUNTY MUD 419	2014	685,338,713	1.00	6,853,387	0	6,853,387	0.0007280	56,822
507	HARRIS COUNTY MUD 468	2014	428,739,880	0.79	3,387,045	0	3,387,045	0.0003598	28,082
508	HARRIS COUNTY MUD 208	2014	198,387,933	0.49	972,101	0	972,101	0.0001033	8,060
509	HARRIS COUNTY MUD 372	2014	745,626,661	0.18	1,304,847	0	1,304,847	0.0001386	10,819
510	HARRIS COUNTY MUD 373	2014	143,461,770	0.34	487,770	0	487,770	0.0000518	4,044
511	HARRIS COUNTY MUD 211	2014	72,583,082	0.57	413,724	0	413,724	0.0000439	3,430
514	HARRIS COUNTY MUD 220	2014	95,079,784	1.18	1,121,941	0	1,121,941	0.0001192	9,302
515	HARRIS COUNTY MUD 215	2014	34,943,104	0.50	174,716	0	174,716	0.0000186	1,449
516	HARRIS COUNTY MUD 216	2014	117,975,301	0.95	1,120,765	0	1,120,765	0.0001191	9,292
517	HARRIS COUNTY MUD 217	2014	75,348,814	1.48	1,115,162	0	1,115,162	0.0001185	9,246
519	HARRIS COUNTY MUD 341	2014	315,047,630	0.39	1,228,686	0	1,228,686	0.0001305	10,187
520	HARRIS COUNTY MUD 370	2014	628,558,765	0.38	2,388,523	0	2,388,523	0.0002537	19,804
521	HARRIS COUNTY MUD 221	2014	247,920,861	0.50	1,239,604	0	1,239,604	0.0001317	10,278
522	HARRIS COUNTY MUD 222	2014	318,979,864	0.42	1,339,715	0	1,339,715	0.0001423	11,108
524	HARRIS COUNTY MUD 354	2014	467,191,855	0.60	2,803,151	0	2,803,151	0.0002978	23,241
525	HARRIS COUNTY MUD 355	2014	634,017,547	0.12	760,821	0	760,821	0.0000808	6,308
526	HARRIS COUNTY MUD 367	2014	554,709,226	0.69	3,799,758	0	3,799,758	0.0004036	31,504
527	HARRIS COUNTY MUD 359	2014	250,848,651	0.27	677,291	0	677,291	0.0000719	5,616
528	HARRIS COUNTY MUD 358	2014	248,186,403	0.81	1,997,901	0	1,997,901	0.0002122	16,565
529	HARRIS COUNTY MUD 360	2014	400,598,269	0.39	1,562,333	0	1,562,333	0.0001660	12,954
530	HARRIS COUNTY MUD 230	2014	400,558,824	0.53	2,122,962	0	2,122,962	0.0002255	17,602
532	HARRIS COUNTY MUD 361	2014	249,053,431	1.00	2,490,534	0	2,490,534	0.0002646	20,649
533	HARRIS COUNTY MUD 233	2014	112,601,496	0.79	889,552	0	889,552	0.0000945	7,375
534	HARRIS COUNTY MUD 364	2014	491,040,009	0.49	2,381,544	0	2,381,544	0.0002530	19,746
535	HARRIS COUNTY MUD 365	2014	455,872,888	0.50	2,256,571	0	2,256,571	0.0002397	18,710
538	HARRIS COUNTY MUD 238	2014	391,890,355	0.64	2,488,504	0	2,488,504	0.0002643	20,633
539	HARRIS COUNTY MUD 239	2014	228,964,388	0.77	1,763,026	0	1,763,026	0.0001873	14,617

ESTIMATED 2016 COST ALLOCATION TO TAXING UNITS

Jur No.	Taxing Unit	Tax Year	Taxable Value as of 04/10/2015	Tax Rate	Total Levy	Frozen Levy Loss	Adjusted Levy	Allocation Ratio	2016 Budget Allocation
541	HARRIS COUNTY MUD 257	2014	181,293,909	0.50	906,470	0	906,470	0.0000963	7,516
542	HARRIS COUNTY MUD 261	2014	112,097,342	0.56	627,745	0	627,745	0.0000667	5,205
544	HARRIS COUNTY MUD 280	2014	180,206,645	0.67	1,198,374	0	1,198,374	0.0001273	9,936
545	HARRIS COUNTY MUD 281	2014	223,408,796	0.74	1,653,225	0	1,653,225	0.0001756	13,707
548	HARRIS COUNTY MUD 248	2014	357,841,113	0.55	1,968,126	0	1,968,126	0.0002091	16,318
549	HARRIS COUNTY MUD 249	2014	211,483,743	0.88	1,861,057	0	1,861,057	0.0001977	15,430
550	HARRIS COUNTY ESD 7	2014	8,557,715,011	0.07	6,161,555	0	6,161,555	0.0006545	51,086
555	HARRIS COUNTY MUD 366	2014	242,864,152	0.20	485,728	0	485,728	0.0000516	4,027
556	HARRIS COUNTY UD 6	2014	363,204,997	0.24	853,532	0	853,532	0.0000907	7,077
564	HARRIS COUNTY UD 14	2014	275,248,696	0.70	1,926,741	0	1,926,741	0.0002047	15,975
565	HARRIS COUNTY UD 15	2014	159,734,113	0.89	1,413,647	0	1,413,647	0.0001502	11,721
566	HARRIS COUNTY UD 16	2014	143,152,104	1.19	1,703,510	0	1,703,510	0.0001810	14,124
600	HARRIS COUNTY WCID-FONDREN ROAD	2014	72,508,844	0.60	435,053	0	435,053	0.0000462	3,607
601	HARRIS COUNTY WCID 1	2014	249,809,827	0.22	549,582	0	549,582	0.0000584	4,557
602	HARRIS COUNTY WCID 21	2014	362,065,013	0.37	1,325,158	0	1,325,158	0.0001408	10,987
603	HARRIS COUNTY WCID 36	2014	301,959,479	0.35	1,056,858	0	1,056,858	0.0001123	8,763
604	HARRIS COUNTY WCID 50	2014	208,383,731	0.21	443,649	0	443,649	0.0000471	3,678
605	HARRIS COUNTY WCID 70	2014	86,192,612	0.70	603,348	0	603,348	0.0000641	5,002
606	HARRIS COUNTY WCID 74	2014	101,540,066	1.00	1,015,401	0	1,015,401	0.0001079	8,419
607	HARRIS COUNTY WCID 75	2014	57,003,978	0.46	259,368	0	259,368	0.0000276	2,150
609	HARRIS COUNTY WCID 84	2014	261,030,197	0.89	2,323,169	0	2,323,169	0.0002468	19,262
610	HARRIS COUNTY WCID 89	2014	309,095,262	1.33	4,110,967	0	4,110,967	0.0004367	34,085
611	HARRIS COUNTY WCID 91	2014	114,127,935	0.36	410,861	0	410,861	0.0000436	3,407
612	HARRIS COUNTY WCID 92	2014	174,764,326	0.14	251,154	0	251,154	0.0000267	2,082
613	HARRIS COUNTY WCID 96	2014	737,314,377	0.89	6,562,098	0	6,562,098	0.0006971	54,407
614	HARRIS COUNTY WCID 155	2014	1,121,780,475	0.17	1,907,027	0	1,907,027	0.0002026	15,811
616	HARRIS COUNTY WCID 156	2014	163,771,781	0.38	622,333	0	622,333	0.0000661	5,160
617	HARRIS COUNTY WCID 157	2014	705,962,037	0.50	3,529,810	0	3,529,810	0.0003750	29,266
622	HARRIS COUNTY WCID 109	2014	481,048,290	0.25	1,202,621	0	1,202,621	0.0001278	9,971
623	HARRIS COUNTY WCID 110	2014	672,007,936	0.46	3,091,237	0	3,091,237	0.0003284	25,630
624	HARRIS COUNTY WCID 113	2014	72,278,058	0.79	570,997	0	570,997	0.0000607	4,734
625	HARRIS COUNTY WCID 114	2014	376,319,941	0.30	1,128,960	0	1,128,960	0.0001199	9,360
626	HARRIS COUNTY WCID 116	2014	284,565,840	0.10	284,566	0	284,566	0.0000302	2,359
627	HARRIS COUNTY WCID 119	2014	436,719,158	0.54	2,358,283	0	2,358,283	0.0002505	19,553
628	HARRIS COUNTY WCID 132	2014	120,011,292	0.48	576,054	0	576,054	0.0000612	4,776
629	HARRIS COUNTY WCID 133	2014	119,838,993	0.97	1,162,438	0	1,162,438	0.0001235	9,638
630	HARRIS COUNTY WCID 136	2014	69,287,028	0.78	540,439	0	540,439	0.0000574	4,481
631	HARRIS COUNTY ESD 46	2014	4,105,777,078	0.08	3,284,622	0	3,284,622	0.0003489	27,233
632	HARRIS COUNTY WCID 145	2014	1,048,582,350	0.06	617,196	0	617,196	0.0000656	5,117
633	HARRIS COUNTY ESD 9	2014	29,304,881,179	0.06	17,582,929	0	17,582,929	0.0018678	145,782

ESTIMATED 2016 COST ALLOCATION TO TAXING UNITS

Jur No.	Taxing Unit	Tax Year	Taxable Value as of 04/10/2015	Tax Rate	Total Levy	Frozen Levy Loss	Adjusted Levy	Allocation Ratio	2016 Budget Allocation
634	HARRIS COUNTY ESD 13	2014	5,862,163,416	0.09	5,111,806	0	5,111,806	0.0005430	42,383
635	HARRIS COUNTY ESD 16	2014	11,271,182,251	0.05	5,542,040	0	5,542,040	0.0005887	45,950
636	HARRIS COUNTY ESD 20	2014	3,439,193,951	0.10	3,439,194	0	3,439,194	0.0003653	28,515
637	HARRIS COUNTY ESD 28	2014	2,569,403,317	0.10	2,569,403	0	2,569,403	0.0002729	21,303
638	HARRIS COUNTY ESD 47	2014	2,514,188,097	0.10	2,429,686	0	2,429,686	0.0002581	20,145
639	HARRIS COUNTY ESD 24	2014	4,243,734,618	0.10	4,125,759	0	4,125,759	0.0004383	34,207
640	HARRIS COUNTY ESD 14	2014	513,689,176	0.05	256,845	0	256,845	0.0000273	2,130
641	HARRIS COUNTY ESD 10	2014	3,115,669,830	0.10	3,115,670	0	3,115,670	0.0003310	25,832
642	HARRIS COUNTY ESD 25	2014	1,319,364,820	0.10	1,319,365	0	1,319,365	0.0001402	10,939
643	HARRIS COUNTY ESD 48	2014	7,754,506,108	0.09	7,134,146	0	7,134,146	0.0007578	59,150
645	HARRIS COUNTY ESD 29	2014	2,455,586,842	0.10	2,364,730	0	2,364,730	0.0002512	19,606
647	HARRIS COUNTY ESD 17	2014	3,135,387,835	0.10	3,135,388	0	3,135,388	0.0003331	25,996
648	HARRIS COUNTY ESD 21	2014	1,299,880,120	0.05	649,940	0	649,940	0.0000690	5,389
649	HARRIS COUNTY ESD 19	2014	423,535,607	0.03	127,061	0	127,061	0.0000135	1,053
650	HARRIS-FT BND CNTIES MUD 1	2014	44,418,797	0.69	304,269	0	304,269	0.0000323	2,523
651	HEATHERLOCH MUD	2014	192,678,898	0.40	761,082	0	761,082	0.0000808	6,310
652	HORSEPEN BAYOU MUD	2014	401,659,879	0.70	2,811,619	0	2,811,619	0.0002987	23,311
654	HUNTERS GLEN MUD	2014	224,459,545	0.90	2,020,136	0	2,020,136	0.0002146	16,749
656	INTERSTATE MUD	2014	474,193,068	0.41	1,920,482	0	1,920,482	0.0002040	15,923
657	INVERNESS FOREST ID	2014	93,464,131	0.55	514,053	0	514,053	0.0000546	4,262
658	JACKRABBIT ROAD PUD	2014	219,161,969	0.30	657,486	0	657,486	0.0000698	5,451
660	HARRIS-FT BND CNTIES MUD 3	2014	240,885,871	1.07	2,577,479	0	2,577,479	0.0002738	21,370
662	FORT BEND COUNTY MUD 30	2014	224,021	0.97	2,173	0	2,173	0.0000002	18
664	HARRIS COUNTY ESD 75	2014	627,488,097	0.09	588,521	0	588,521	0.0000625	4,880
665	HARRIS COUNTY ESD 15	2014	633,435,362	0.05	307,089	0	307,089	0.0000326	2,546
666	HARRIS COUNTY ESD 11	2014	34,756,867,768	0.04	14,945,453	0	14,945,453	0.0015876	123,915
667	HARRIS COUNTY ESD 50	2014	4,520,607,653	0.05	2,249,093	0	2,249,093	0.0002389	18,648
668	HARRIS COUNTY ESD 12	2014	2,552,196,488	0.03	650,810	0	650,810	0.0000691	5,396
669	HARRIS COUNTY ESD 80	2014	1,566,742,192	0.04	656,465	0	656,465	0.0000697	5,443
670	HARRIS COUNTY ESD 60	2014	4,430,923,785	0.05	2,215,462	0	2,215,462	0.0002353	18,369
671	HARRIS COUNTY ESD 1	2014	12,281,575,537	0.10	12,281,576	0	12,281,576	0.0013046	101,828
672	HARRIS COUNTY ESD 2	2014	4,453,017,418	0.03	1,335,905	0	1,335,905	0.0001419	11,076
673	HARRIS COUNTY ESD 3	2014	1,316,852,946	0.06	761,668	0	761,668	0.0000809	6,315
674	HARRIS COUNTY ESD 4	2014	789,177,575	0.10	789,178	0	789,178	0.0000838	6,543
675	HARRIS COUNTY ESD 5	2014	1,398,575,497	0.02	279,715	0	279,715	0.0000297	2,319
676	HARRIS COUNTY ESD 6	2014	2,589,888,747	0.01	251,219	0	251,219	0.0000267	2,083
677	HARRIS-FT BND ESD 100	2014	1,942,758,745	0.09	1,717,399	0	1,717,399	0.0001824	14,239
678	WALLER HARRIS ESD 200	2014	708,244,608	0.10	704,703	0	704,703	0.0000749	5,843
679	HARRIS COUNTY ESD 8	2014	1,743,217,761	0.10	1,743,218	0	1,743,218	0.0001852	14,453
681	KINGSBRIDGE MUD	2014	13,959,942	0.78	108,888	0	108,888	0.0000116	903

ESTIMATED 2016 COST ALLOCATION TO TAXING UNITS

Jur No.	Taxing Unit	Tax Year	Taxable Value as of 04/10/2015	Tax Rate	Total Levy	Frozen Levy Loss	Adjusted Levy	Allocation Ratio	2016 Budget Allocation
682	KIRKMONT MUD	2014	80,971,697	0.56	455,061	0	455,061	0.0000483	3,773
683	KLEIN PUD	2014	214,911,493	0.43	924,119	0	924,119	0.0000982	7,662
684	KLEINWOOD MUD	2014	313,981,452	0.47	1,475,713	0	1,475,713	0.0001568	12,235
691	LAKE MUD	2014	215,459,200	0.68	1,465,123	0	1,465,123	0.0001556	12,148
692	LAKE FOREST UD	2014	259,958,165	0.25	649,895	0	649,895	0.0000690	5,388
693	LANGHAM CREEK UD	2014	382,102,548	0.66	2,535,250	0	2,535,250	0.0002693	21,020
694	LONGHORN TOWN UD	2014	198,930,804	0.55	1,094,119	0	1,094,119	0.0001162	9,071
695	LOUETTA NORTH PUD	2014	292,459,013	0.28	818,885	0	818,885	0.0000870	6,789
696	LOUETTA ROAD UD	2014	93,441,192	0.48	443,846	0	443,846	0.0000471	3,680
697	LUCE BAYOU PUD	2014	36,455,257	0.95	346,325	0	346,325	0.0000368	2,871
701	MALCOMSON ROAD UD	2014	540,701,375	0.48	2,595,367	0	2,595,367	0.0002757	21,519
702	MASON CREEK UD	2014	505,574,882	0.33	1,691,148	0	1,691,148	0.0001796	14,022
703	BRAZORIA COUNTY MUD 28	2014	48,526,320	0.82	397,916	0	397,916	0.0000423	3,299
704	MAYDE CREEK MUD	2014	202,654,823	0.93	1,884,690	0	1,884,690	0.0002002	15,626
705	MEMORIAL HILLS UD	2014	80,064,190	0.91	728,584	0	728,584	0.0000774	6,041
706	MEMORIAL MUD	2014	376,938,381	0.51	1,922,386	0	1,922,386	0.0002042	15,939
707	MEMORIAL VILLAGES WATER AUTHORITY	2014	4,238,949,137	0.03	1,465,405	0	1,465,405	0.0001557	12,150
709	MILLS ROAD MUD	2014	197,998,594	0.92	1,821,587	0	1,821,587	0.0001935	15,103
710	MISSION BEND MUD 1	2014	145,369,168	0.28	407,034	0	407,034	0.0000432	3,375
711	MISSION BEND MUD 2	2014	280,179,051	0.84	2,353,504	0	2,353,504	0.0002500	19,513
712	MORTON ROAD MUD	2014	130,984,662	0.75	982,385	0	982,385	0.0001044	8,145
714	MOUNT HOUSTON ROAD MUD	2014	154,344,912	1.30	2,006,484	0	2,006,484	0.0002131	16,636
718	NEWPORT MUD	2014	395,746,277	0.64	2,532,776	0	2,532,776	0.0002690	21,000
721	NORTHAMPTON MUD	2014	388,037,523	0.61	2,367,029	0	2,367,029	0.0002514	19,625
722	NORTH BELT UD	2014	296,322,950	0.50	1,481,615	0	1,481,615	0.0001574	12,284
724	NORTHEAST HARRIS CNTY MUD 1	2014	55,913,664	1.48	827,522	0	827,522	0.0000879	6,861
725	NORTH FOREST MUD	2014	59,468,671	0.80	475,749	0	475,749	0.0000505	3,944
727	NORTH MISSION GLEN MUD	2014	3,137,074	0.60	18,822	0	18,822	0.0000020	156
728	NORTH PARK PUD	2014	194,297,511	0.38	738,331	0	738,331	0.0000784	6,122
730	NORTHWEST FREEWAY MUD	2014	72,150,239	1.26	909,093	0	909,093	0.0000966	7,537
731	NORTHGATE CROSSING MUD 1	2014	83,164,909	1.25	1,035,403	0	1,035,403	0.0001100	8,585
732	NORTHGATE CROSSING MUD 2	2014	233,632,509	0.92	2,137,737	0	2,137,737	0.0002271	17,724
734	NORTHGATE CROSSING ROAD UD	2014	277,328,451	0.21	582,390	0	582,390	0.0000619	4,829
745	NORTHWEST H C MUD 5	2014	1,163,860,887	0.79	9,194,501	0	9,194,501	0.0009767	76,233
746	NORTHWEST H C MUD 6	2014	276,025,048	0.39	1,076,498	0	1,076,498	0.0001144	8,925
749	NORTHWEST H C MUD 9	2014	324,995,191	0.54	1,738,724	0	1,738,724	0.0001847	14,416
750	NORTHWEST H C MUD 10	2014	460,891,894	0.85	3,917,581	0	3,917,581	0.0004162	32,481
752	NORTHWEST H C MUD 12	2014	87,911,390	1.04	914,278	0	914,278	0.0000971	7,580
755	NORTHWEST H C MUD 15	2014	291,180,988	0.75	2,183,857	0	2,183,857	0.0002320	18,107
756	NORTHWEST H C MUD 16	2014	121,121,322	1.19	1,441,344	0	1,441,344	0.0001531	11,950

ESTIMATED 2016 COST ALLOCATION TO TAXING UNITS

Jur No.	Taxing Unit	Tax Year	Taxable Value as of 04/10/2015	Tax Rate	Total Levy	Frozen Levy Loss	Adjusted Levy	Allocation Ratio	2016 Budget Allocation
759	NORTHWEST H C MUD 19	2014	356,611,950	0.99	3,530,458	0	3,530,458	0.0003750	29,271
760	NORTHWEST H C MUD 20	2014	195,285,413	0.25	488,214	0	488,214	0.0000519	4,048
761	NORTHWEST H C MUD 21	2014	122,056,053	0.25	305,140	0	305,140	0.0000324	2,530
762	NORTHWEST H C MUD 22	2014	135,468,238	0.86	1,165,027	0	1,165,027	0.0001238	9,659
763	NORTHWEST H C MUD 23	2014	96,081,012	0.94	903,162	0	903,162	0.0000959	7,488
764	NORTHWEST H C MUD 24	2014	439,660,293	0.80	3,517,282	0	3,517,282	0.0003736	29,162
768	NORTHWEST H C MUD 28	2014	96,740,926	0.68	657,838	0	657,838	0.0000699	5,454
769	NORTHWEST H C MUD 29	2014	308,574,304	0.37	1,141,725	0	1,141,725	0.0001213	9,466
770	NORTHWEST H C MUD 30	2014	283,372,877	0.75	2,125,297	0	2,125,297	0.0002258	17,621
771	NORTHWEST H C MUD 32	2014	313,590,248	0.79	2,477,363	0	2,477,363	0.0002632	20,540
776	NORTHWEST H C MUD 36	2014	168,940,521	0.85	1,435,994	0	1,435,994	0.0001525	11,906
777	NW PARK CONSOLIDATED MUD	2014	576,842,568	0.48	2,768,844	0	2,768,844	0.0002941	22,957
778	NOTTINGHAM COUNTRY MUD	2014	813,274,005	0.38	3,049,778	0	3,049,778	0.0003240	25,286
779	NORTHWOOD MUD 1	2014	26,715,588	1.25	333,945	0	333,945	0.0000355	2,769
781	OAKMONT PUBLIC UTILITY DISTRICT	2014	368,291,156	1.10	4,051,203	0	4,051,203	0.0004303	33,589
783	PARKWAY UD	2014	210,251,898	0.92	1,934,317	0	1,934,317	0.0002055	16,038
786	RANKIN ROAD WEST MUD	2014	81,771,705	1.21	989,438	0	989,438	0.0001051	8,204
787	PINE VILLAGE PUD	2014	35,103,569	2.00	702,071	0	702,071	0.0000746	5,821
788	PONDEROSA FOREST UD	2014	266,183,698	0.10	266,184	0	266,184	0.0000283	2,207
789	POSTWOOD MUD	2014	92,962,424	0.48	446,220	0	446,220	0.0000474	3,700
790	PRESTONWOOD FOREST MUD	2014	189,396,910	0.35	662,889	0	662,889	0.0000704	5,496
801	REID ROAD MUD 1	2014	222,956,822	0.57	1,259,706	0	1,259,706	0.0001338	10,444
802	REID ROAD MUD 2	2014	323,282,047	0.40	1,293,128	0	1,293,128	0.0001374	10,721
803	RENN ROAD MUD	2014	106,465,169	0.75	798,489	0	798,489	0.0000848	6,620
804	RICEWOOD MUD	2014	286,637,375	0.53	1,519,178	0	1,519,178	0.0001614	12,596
806	ROLLING CREEK UD	2014	180,853,908	0.88	1,591,514	0	1,591,514	0.0001691	13,195
807	ROLLING FORK PUD	2014	116,626,747	0.40	466,507	0	466,507	0.0000496	3,868
809	ROYALWOOD MUD	2014	25,034,090	0.50	125,170	0	125,170	0.0000133	1,038
810	RICHEY ROAD MUD	2014	300,024,958	0.25	750,062	0	750,062	0.0000797	6,219
811	REMLINGTON MUD 1	2014	865,211,636	0.57	4,931,706	0	4,931,706	0.0005239	40,889
822	SAGEMEADOW UD	2014	219,854,778	0.52	1,143,245	0	1,143,245	0.0001214	9,479
823	SEQUOIA UD	2014	49,317,073	0.35	172,610	0	172,610	0.0000183	1,431
824	SHASLA PUD	2014	69,180,359	1.09	754,066	0	754,066	0.0000801	6,252
825	SW HARRIS COUNTY MUD 1	2014	46,784,484	0.79	369,597	0	369,597	0.0000393	3,064
826	SPANISH COVE PUD	2014	19,148,290	0.70	134,038	0	134,038	0.0000142	1,111
827	SPENCER ROAD PUD	2014	298,081,021	0.41	1,222,132	0	1,222,132	0.0001298	10,133
829	SPRING CREEK FOREST PUD	2014	162,969,577	0.48	774,105	0	774,105	0.0000822	6,418
831	SPRING MEADOWS MUD	2014	167,960,118	1.13	1,897,949	0	1,897,949	0.0002016	15,736
832	SPRING WEST MUD	2014	197,267,150	0.90	1,775,404	0	1,775,404	0.0001886	14,720
833	SHELDON ROAD MUD	2014	69,257,053	1.48	1,023,695	0	1,023,695	0.0001087	8,488

ESTIMATED 2016 COST ALLOCATION TO TAXING UNITS

Jur No.	Taxing Unit	Tax Year	Taxable Value as of 04/10/2015	Tax Rate	Total Levy	Frozen Levy Loss	Adjusted Levy	Allocation Ratio	2016 Budget Allocation
841	TATTOR ROAD MUD	2014	146,103,197	0.64	935,060	0	935,060	0.0000993	7,753
842	TERRANOVA WEST MUD	2014	195,667,614	0.68	1,330,540	0	1,330,540	0.0001413	11,032
844	HARRIS COUNTY MUD 368	2014	514,412,466	0.87	4,475,388	0	4,475,388	0.0004754	37,106
846	TIMBERLAKE ID	2014	120,621,432	0.54	651,356	0	651,356	0.0000692	5,400
847	TIMBER LANE UD	2014	487,779,556	1.01	4,926,574	0	4,926,574	0.0005233	40,847
848	TRAIL OF THE LAKES MUD	2014	350,268,500	0.70	2,451,880	0	2,451,880	0.0002605	20,329
850	HARRIS COUNTY ID 3	2014	2,227,384,580	0.15	3,341,077	0	3,341,077	0.0003549	27,701
851	WESTADOR MUD	2014	245,891,181	0.17	418,015	0	418,015	0.0000444	3,466
861	WEST HARRIS COUNTY MUD 1	2014	390,256,942	0.28	1,092,719	0	1,092,719	0.0001161	9,060
862	WEST HARRIS COUNTY MUD 2	2014	135,427,503	0.50	677,138	0	677,138	0.0000719	5,614
864	WEST HARRIS COUNTY MUD 4	2014	68,646,633	1.09	748,248	0	748,248	0.0000795	6,204
865	WEST HARRIS COUNTY MUD 5	2014	83,080,888	1.16	963,738	0	963,738	0.0001024	7,990
866	WEST HARRIS COUNTY MUD 6	2014	139,928,429	0.55	769,606	0	769,606	0.0000818	6,381
867	WEST HARRIS COUNTY MUD 7	2014	168,458,109	0.85	1,431,894	0	1,431,894	0.0001521	11,872
869	WEST HARRIS COUNTY MUD 9	2014	240,720,142	0.52	1,251,745	0	1,251,745	0.0001330	10,378
870	WEST HARRIS COUNTY MUD 10	2014	316,222,024	0.71	2,245,176	0	2,245,176	0.0002385	18,615
871	WEST HARRIS COUNTY MUD 11	2014	797,101,828	0.55	4,384,060	0	4,384,060	0.0004657	36,349
874	WEST HARRIS COUNTY MUD 14	2014	176,715,535	0.63	1,113,308	0	1,113,308	0.0001183	9,231
875	WEST HARRIS COUNTY MUD 15	2014	383,442,785	0.27	1,035,296	0	1,035,296	0.0001100	8,584
876	WEST HARRIS COUNTY MUD 16	2014	39,315,683	0.50	196,578	0	196,578	0.0000209	1,630
877	WEST HARRIS COUNTY MUD 17	2014	92,422,891	1.24	1,146,044	0	1,146,044	0.0001217	9,502
879	WEST HARRIS COUNTY MUD 21	2014	269,814,630	0.95	2,563,239	0	2,563,239	0.0002723	21,252
893	WEST KEEGANS BAYOU ID	2014	124,300,458	0.10	124,300	0	124,300	0.0000132	1,031
894	WESTLAKE MUD 1	2014	158,061,357	0.59	936,514	0	936,514	0.0000995	7,765
895	WEST MEMORIAL MUD	2014	225,464,583	0.45	1,014,591	0	1,014,591	0.0001078	8,412
896	WESTON MUD	2014	504,279,585	0.55	2,773,538	0	2,773,538	0.0002946	22,996
897	WESTPARK MUD	2014	234,874,659	0.65	1,526,685	0	1,526,685	0.0001622	12,658
899	WHITE OAK BEND MUD	2014	59,835,659	0.99	592,373	0	592,373	0.0000629	4,911
901	WINDFERN FOREST UD	2014	296,767,482	0.52	1,543,191	0	1,543,191	0.0001639	12,795
902	WOODCREEK MUD	2014	125,419,165	0.56	702,347	0	702,347	0.0000746	5,823
907	NORTHPOINTE WCID	2014	695,822,978	0.38	2,644,127	0	2,644,127	0.0002809	21,923
910	HARRIS-FT BND CNTIES MUD 4	2014	91,345,557	0.82	749,034	0	749,034	0.0000796	6,210
911	CINCO MUD 3	2014	25,768,163	0.42	108,226	0	108,226	0.0000115	897
913	CINCO MUD 6	2014	103,088,914	0.40	407,201	0	407,201	0.0000433	3,376
914	CINCO MUD 9	2014	136,661,241	0.53	724,305	0	724,305	0.0000769	6,005
915	HARRIS-FT BND CNTIES MUD 5	2014	6,460,588	0.65	41,994	0	41,994	0.0000045	348
916	FORT BEND WCID 2	2014	26,186,863	0.18	47,136	0	47,136	0.0000050	391
917	WILLOW FORK DRAINAGE DISTRICT	2014	267,148,715	0.19	507,583	0	507,583	0.0000539	4,208
513			\$2,909,251,417,973		\$9,510,635,679	\$96,848,780	\$9,413,786,899	1.0000000	\$78,050,907