



***HARRIS COUNTY
APPRAISAL DISTRICT
HARRIS COUNTY
HOUSTON, TEXAS***

2017 BUDGET

July 2016

RESOLUTION NO. 2016-01

**A RESOLUTION OF THE BOARD OF DIRECTORS OF THE HARRIS
COUNTY APPRAISAL DISTRICT APPROVING AND ADOPTING
THE 2017 BUDGET OF SAID DISTRICT**

* * * *

WHEREAS, pursuant to the provisions of the Texas Property Tax code, a proposed budget for the Harris County Appraisal District for the year 2017 has heretofore been prepared by the chief appraiser of the district and timely submitted by him to the Board of Directors of such district and to the governing bodies of each taxing unit within such district; and

WHEREAS, following timely notice in writing furnished to the presiding officer of the governing body of each such taxing unit and published in a newspaper of general circulation in Harris County, Texas, in accordance with Section 6.062 of the Texas Property Tax Code, the Board of Directors of said district did on the 20th day of July, 2016, conduct a public hearing on such proposed budget; and

WHEREAS, at such public hearing any and all persons desiring to be heard on any matter relating to said proposed budget were heard and their comments and suggestions were duly noted and considered by the Board of Directors of said district; and

WHEREAS, the Board of Directors of the district now deems it necessary and appropriate to formally approve and adopt at this time the 2017 budget of the Harris County Appraisal District; now, therefore

**BE IT RESOLVED BY THE BOARD OF DIRECTORS OF THE HARRIS COUNTY
APPRAISAL DISTRICT:**

Section 1. That the facts and recitations set forth in the preamble of this Resolution be, and they are hereby, found to be true and correct and that they be, and they are hereby, adopted, ratified, and confirmed.

Section 2. That the proposed budget for the Harris County Appraisal District for the year 2017 as heretofore submitted to and considered by the Board of Directors of such district and as heretofore modified or changed by such Board of Directors of such district during its deliberations on such budget following the public hearing thereon, in the total amount of \$81,496,171 will be paid to the district by the various taxing units participating in

the district according to their respective proportionate shares calculated pursuant to the formula established by Section 6.06(d) of the Texas Property Tax Code) be, and it is hereby, approved and adopted as the official budget of said district for the year 2017.

Section 3. That the chief appraiser of the Harris County Appraisal District be, and he is hereby, authorized to make the interfund transfers between the general fund and the internal service fund as necessary for expenditures related to the group benefits fund.

Section 4. That the chief appraiser of the Harris County Appraisal District be, and he is hereby, authorized to transfer unencumbered balances from one budget account to another budget account during the 2017 fiscal year in amounts of \$25,000 or less. Amounts exceeding \$25,000 may be transferred under the following circumstances and conditions: A written request to effect such transfers exceeding \$25,000 shall be submitted by the chief appraiser to the Board of Directors. Such request shall identify the budget account from which it is proposed the transfer will be made, the budget account to which it is proposed the transfer will be made, and the need or justification for such transfer. Approval of such request by formal action of the Board of Directors must be obtained before the chief appraiser shall be authorized to make such transfer.

Section 5. That, for the purpose of authenticating the official 2017 budget of the Harris County Appraisal District adopted hereby, a copy of which is attached hereto and made a part hereof for all purposes, the chairman and secretary of the Board of Directors of said district be, and they are hereby, authorized and directed to affix their signatures on the cover of the original of such budget under the following certification which they shall cause to be placed thereon:

"This is to certify that this is the official 2017 budget of the Harris County Appraisal District approved and adopted by the Board of Directors of said district on July 20, 2016."

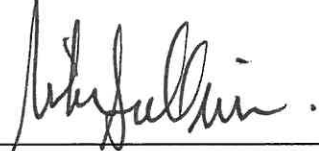
Section 6. That the chief appraiser of the district be, and he is hereby, authorized and directed to place or cause to be placed the official, authenticated original of said 2017 budget among the public records of the district and to make the same available for inspection in the office of the district by any person requesting that right and privilege.

PASSED, APPROVED, AND ADOPTED this the 20th day of July, 2016.



Chairman, Board of Directors
Harris County Appraisal District

ATTEST:



Secretary, Board of Directors
Harris County Appraisal District

(SEAL)



***HARRIS COUNTY
APPRAISAL DISTRICT***

2017 BUDGET

January 1, 2017 through December 31, 2017

**REVENUES & EXPENDITURES
FOR ALL DEPARTMENTS**

**Roland Altinger, Chief Appraiser
Houston, Texas
July 2016**

Contents

- 3 District Officials
Board of directors and chief appraiser
- 4 Plan of Organization
The departments and divisions of the district and the number of full time equivalent positions

FINANCIAL SECTION

- 6 2017 Budget
Expenditures for the general fund by line item account
- 8 Expenditure Summary & Method of Financing
Summarizes expenditures by account groups and an estimate of revenue used to finance the expenditures
- 9 Line Item Expenditures by Department
General fund expenditures by line item account for each of the district's 3 operating departments
- 11 2017 Budget with Comparisons
Comparison of the 2017 budget to the 2016 budget and 2015 actual expenditures by line item

TEXAS PROPERTY TAX CODE SECTION

- 14 Schedule of Positions
List of full time equivalent positions in alphabetical order; indicating the pay grade and number of positions for each position title
- 17 Schedule of Appraisal Review Board Members
Number of appraisal review board members eligible for payment
- 18 Salary Schedule and Provisions
Employee pay is determined by three salary schedules: Classified, Technical, and Director; list of line item positions; merit and quality service incentive salary increases; compensatory time; career development program; and, career ladder program

21 General Provisions

Provisions relating to mileage, expense allowances, commissioned security officers uniform cleaning, cell phone allowance, travel regulations, van pool subsidy, general counsel, and reappropriation of certain income

25 Employee Benefits Schedule

Provisions for employee benefits, including paid leave and vacation

28 Appraisal Review Board Provisions

Provisions relating to ARB Members and other appropriations

30 Capital Expenditures

List of capital items scheduled for acquisition

31 Estimated Cost Allocation to Taxing Units

List of taxing units allocated a portion of this budget and the estimated amount to be paid

DISTRICT OFFICIALS

Harris County Appraisal District Board of Directors 2016

ED HEATHCOTT
Chairman

MIKE SULLIVAN
Secretary

GLENN PETERS
Assistant Secretary

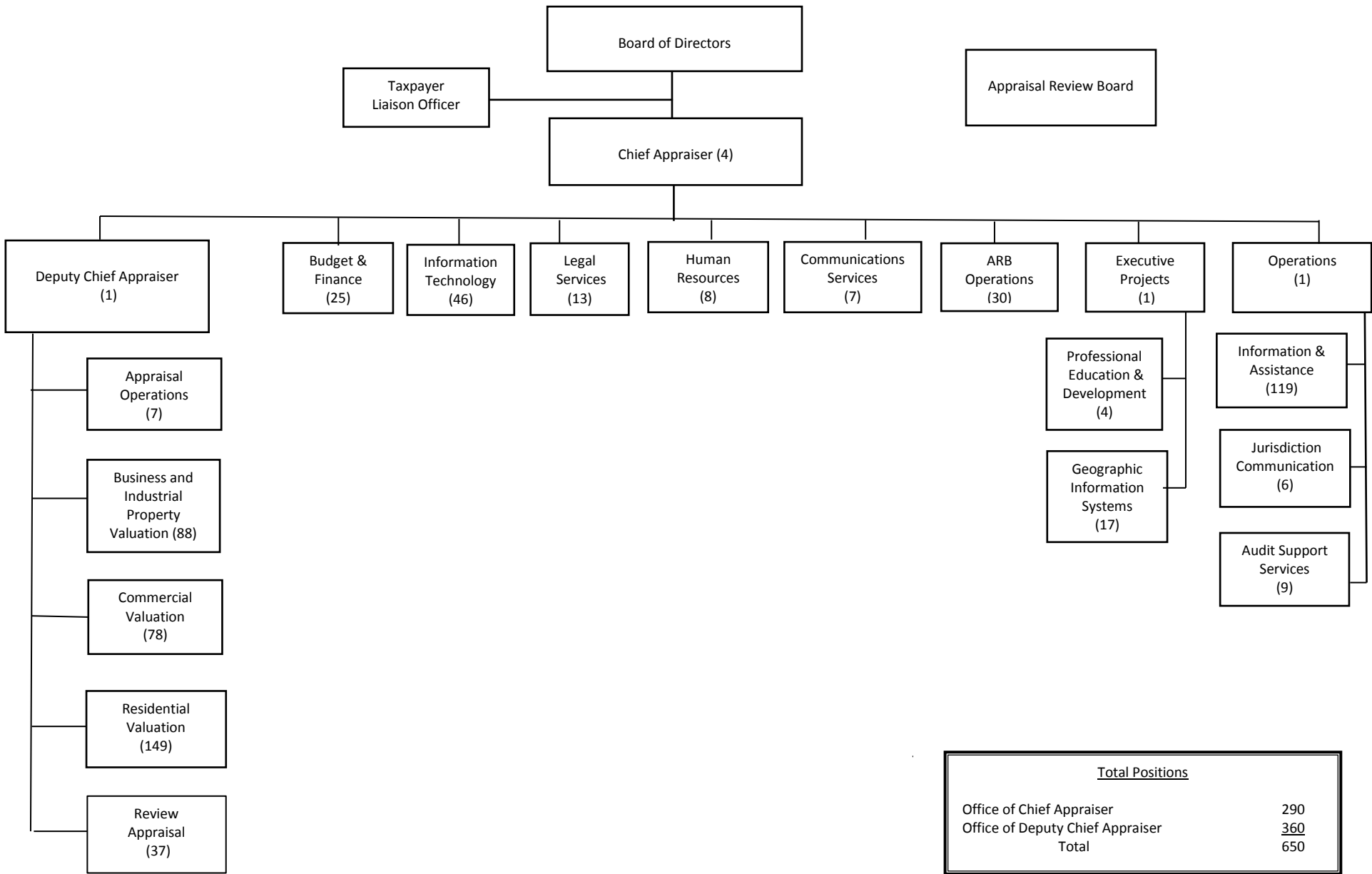
WANDA ADAMS
Member

PETE PAPE
Member

AL ODOM
Member

Roland Altinger
Chief Appraiser

PLAN OF ORGANIZATION - 2017



FINANCIAL SECTION

2017 Budget – General Fund

Expenditure Summary and Method of Financing

General Fund – Line Item Expenditures by Department

2017 Budget with Comparisons

2017 BUDGET
GENERAL FUND

Account Number	Account Name	2017 Budget
	Number of Positions	650.0
	Part-time & Seasonal FTEs	5.9
<u>SALARIES, WAGES & RELATED</u>		
	Salaries & Wages	\$35,748,177
	Allowance for Career Development	95,000
	Less Salary Lapse	(1,415,629)
	Allowance for Merit	900,000
	Reserve for Longevity	389,350
	Reserve for COLA	1,057,455
	Allowance for Career Ladder	175,000
3010	Net Salaries & Wages	36,949,353
3011	ARB Board Members	2,781,000
3015	Contract & Seasonal Labor	-
3020	Shift Differential	32,000
3030	Overtime	612,666
3040	Part-time & Seasonal Wages	213,220
TOTAL SALARIES, WAGES & RELATED		40,588,239
<u>EMPLOYEE BENEFITS & RELATED</u>		
3501	Group Health Insurance	7,410,000
3503	Workers' Compensation Insurance	95,000
3504	Group Life & LTD Insurance	98,860
3505	Group Dental Insurance	226,980
3507	Unemployment Insurance	226,800
3520	Retirement	5,571,435
3526	FICA Medicare	588,529
3527	Social Security	185,642
TOTAL EMPLOYEE BENEFITS & RELATED		14,403,246
<u>OFFICE & FIELD OPERATIONS</u>		
4001	Office Supplies	165,244
4003	Office Equipment Maintenance	455,450
4011	Telephone & Communication Service	289,843
4020	Copier Leases	94,000
4021	Copier Supplies & Maintenance	145,390
4030	Mapping Reproduction & Supplies	2,500
4040	Public Notice Advertising	18,000
4050	Security Services	159,750
4060	Field Travel, Vanpool & Other Exp	1,114,168
4070	Appraisal Supplies	13,370
4080	Vehicle Gasoline & Maintenance	34,000
4090	Records Storage & Supplies	1,500
4092	Records Conversion Services	0
4097	Employee Recognition Activities	12,000
4100	Postage, Mailing, & Handling Svcs.	2,172,000
4200	Professional Registration & Dues	75,795
4202	Seminars & Other Tuition	234,279

2017 BUDGET
GENERAL FUND

Account Number	Account Name	2017 Budget
4212	Education Travel & Expenses	161,373
4213	Books, Manuals & Publications	283,916
4501	Printing, Forms, & Stationery	80,150
4530	Paper, Copier & Printer	135,483
TOTAL OFFICE & FIELD OPERATIONS		5,648,211
 <u>COMPUTER OPERATIONS</u>		
5010	Computer Leasing	0
5020	CPU & Related Maintenance	104,000
5030	Other Computer Maintenance	11,000
5040	Computer Supplies	33,850
5050	Software Lease & Maintenance	1,212,984
5060	Teleprocessing Lines & Installation	17,500
TOTAL COMPUTER OPERATIONS		1,379,334
 <u>PROFESSIONAL SERVICES</u>		
5510	Financial Auditing	0
5520	Legal Services	10,983,967
5525	Arbitration Fees & Services	200,000
5526	State Office of Admin Hearings	5,000
5530	Appraisal Services	1,506,295
5550	Other Professional Services	573,925
5551	Mapping & Records Maintenance	0
TOTAL PROFESSIONAL SERVICES		14,660,587
 <u>OFFICE SPACE, UTILITIES & RELATED</u>		
6100	Office Space	2,421,904
6150	Utilities	590,000
6200	Building & Fixture Maintenance	1,524,650
6400	Casualty & Liability Insurance	130,000
TOTAL OFFICE SPACE, UTILITIES & RELATED		4,666,554
 <u>FIXED ASSETS PURCHASES</u>		
6501	Capital Purchases	150,000
TOTAL FIXED ASSETS PURCHASES		150,000
TOTAL BUDGET		81,496,171

EXPENDITURE SUMMARY AND METHOD OF FINANCING
2017 BUDGET

<u>BUDGETED EXPENDITURES</u>	2016 BUDGET	2017 BUDGET	Variance	% Change
<u>Account Groups</u>				
Number of Positions	650.0	650.0	0.0	0.00%
Part-time & Seasonal FTEs	8.7	5.9	(2.9)	-32.76%
Salaries, Wages & Related	38,439,972	40,588,239	2,148,267.0	5.59%
Employee Benefits	12,916,782	14,403,246	1,486,464.0	11.51%
Office & Field Operations	5,533,694	5,648,211	114,517.0	2.07%
Computer Operations	1,379,334	1,379,334	0.0	0.00%
Professional Services	14,620,044	14,660,587	40,543.0	0.28%
Office Space, Utilities & Maint.	4,666,554	4,666,554	0.0	0.00%
Capital Expenditures	150,000	150,000	0.0	0.00%
TOTAL BUDGET	77,706,380	81,496,171	3,789,791.0	4.88%
 <u>FINANCING METHOD</u>				
Jurisdiction Allocations	77,706,380	81,496,171	3,789,791.0	4.88%
Interest Income	0	0	0.0	0.00%
Other Income	0	0	0.0	0.00%
Application of Restricted Funds	0	0	0.0	0.00%
Application of Unrestricted Funds				
General Fund	0	0	0.0	0.00%
Internal Service Fund	0	0	0.0	0.00%
TOTAL FINANCING METHOD	77,706,380	81,496,171	3,789,791.0	4.88%

GENERAL FUND - LINE ITEM EXPENDITURES BY DEPARTMENT
2017 BUDGET

Account Number	Account Name	TOTAL BUDGET	BOARD OF DIRECTORS	OFC CHIEF APPRAISER	DEP CHIEF APPRAISER
	Number of Positions	650.0	0.0	327.0	323.0
	Part-time & Seasonal FTEs	5.9	0.0	4.9	0.0
<u>SALARIES, WAGES & RELATED</u>					
	Salaries & Wages	\$35,748,177	0	19,291,225	16,456,952
	Allowance for Career Development	95,000	0	95,000	0
	Less Salary Lapse	(1,415,629)	0	(763,934)	(651,695)
	Allowance for Merit	900,000	0	900,000	0
	Reserve for Longevity	389,350	0	196,472	192,878
	Reserve for COLA	1,057,455	0	563,746	493,709
	Allowance for Career Ladder	175,000	0	175,000	0
3010	Net Salaries & Wages	36,949,353	0	20,457,509	16,491,844
3011	ARB Board Members	2,781,000	2,781,000	0	0
3020	Shift Differential	32,000	0	32,000	0
3030	Overtime	612,666	0	495,800	116,866
3040	Part-time & Seasonal Wages	213,220	30,000	110,720	72,500
TOTAL SALARIES, WAGES & RELATED		40,588,239	2,811,000	21,096,029	16,681,210
<u>EMPLOYEE BENEFITS & RELATED</u>					
3501	Group Health Insurance	7,410,000	0	3,739,200	3,670,800
3503	Workers' Compensation Insurance	95,000	0	95,000	0
3504	Group Life & LTD Insurance	98,860	0	55,178	43,682
3505	Group Dental Insurance	226,980	0	114,537	112,443
3507	Unemployment Insurance	226,800	51,300	88,560	86,940
3520	Retirement	5,571,435	0	3,110,025	2,461,410
3526	FICA Medicare	588,529	40,760	305,892	241,877
3527	Social Security	185,642	174,282	6,865	4,495
TOTAL EMPLOYEE BENEFITS & RELATED		14,403,246	266,342	7,515,257	6,621,647
<u>OFFICE & FIELD OPERATIONS</u>					
4001	Office Supplies	165,244	1,000	120,224	44,020
4003	Office Equipment Maintenance	455,450	0	455,450	0
4011	Telephone & Communication Service	289,843	0	289,843	0
4020	Copier Leases	94,000	0	94,000	0
4021	Copier Supplies & Maintenance	145,390	0	145,390	0
4030	Mapping Reproduction & Supplies	2,500	0	2,500	0
4040	Public Notice Advertising	18,000	0	18,000	0
4050	Security Services	159,750	0	159,750	0
4060	Field Travel, Vanpool & Other Exp	1,114,168	3,000	159,560	951,608
4070	Appraisal Supplies	13,370	0	600	12,770
4080	Vehicle Gasoline & Maintenance	34,000	0	34,000	0
4090	Records Storage & Supplies	1,500	0	1,500	0
4092	Records Conversion Services	0	0	0	0
4097	Employee Recognition Activities	12,000	12,000	0	0
4100	Postage, Mailing, & Handling Svcs.	2,172,000	0	2,172,000	0
4200	Professional Registration & Dues	75,795	0	75,795	0
4202	Seminars & Other Tuition	234,279	16,000	196,914	21,365
4212	Education Travel & Expenses	161,373	3,800	107,213	50,360
4213	Books, Manuals & Publications	283,916	0	74,692	209,224
4501	Printing, Forms, & Stationery	80,150	0	80,150	0
4530	Paper, Copier & Printer	135,483	0	135,483	0
TOTAL OFFICE & FIELD OPERATIONS		5,648,211	35,800	4,323,064	1,289,347
<u>COMPUTER OPERATIONS</u>					
5010	Computer Leasing	0	0	0	0
5020	CPU & Related Maintenance	104,000	0	104,000	0
5030	Other Computer Maintenance	11,000	0	11,000	0
5040	Computer Supplies	33,850	0	33,850	0

GENERAL FUND - LINE ITEM EXPENDITURES BY DEPARTMENT
2017 BUDGET

Account Number	Account Name	TOTAL BUDGET	BOARD OF DIRECTORS	OFC CHIEF APPRAISER	DEP CHIEF APPRAISER
5050	Software Lease & Maintenance	1,212,984	0	1,212,984	0
5060	Teleprocessing Lines & Installation	17,500	0	17,500	0
TOTAL COMPUTER OPERATIONS		1,379,334	0	1,379,334	0
<u>PROFESSIONAL SERVICES</u>					
5510	Financial Auditing	0	0	0	0
5520	Legal Services	10,983,967	10,983,967	0	0
5525	Arbitration Fees & Services	200,000	200,000	0	0
5526	State Office of Admin Hearings	5,000	5,000	0	0
5530	Appraisal Services	1,506,295	0	0	1,506,295
5550	Other Professional Services	573,925	5,000	536,925	32,000
5551	Mapping & Records Maintenance	0	0	0	0
TOTAL PROFESSIONAL SERVICES		14,660,587	11,193,967	1,928,325	1,538,295
<u>OFFICE SPACE, UTILITIES & RELATED</u>					
6100	Office Space	2,421,904	0	2,421,904	0
6150	Utilities	590,000	0	590,000	0
6200	Building & Fixture Maintenance	1,524,650	0	1,524,650	0
6400	Casualty & Liability Insurance	130,000	0	130,000	0
TOTAL OFFICE SPACE, UTILITIES & RELATED		4,666,554	0	4,666,554	0
<u>FIXED ASSETS PURCHASES</u>					
6501	Capital Purchases	150,000	0	150,000	0
TOTAL FIXED ASSETS PURCHASES		150,000	0	150,000	0
TOTAL BUDGET		<u>\$81,496,171</u>	<u>\$14,307,109</u>	<u>\$41,058,563</u>	<u>\$26,130,499</u>

2017 BUDGET WITH COMPARISONS
2016 BUDGET & 2015 ACTUAL

Account Number	Account Name	2015 ACTUAL	2016 BUDGET	2017 BUDGET
	Number of Positions	649	650	650
	Part-time & Seasonal FTEs	8	9	6
<u>SALARIES, WAGES & RELATED</u>				
	Salaries & Wages	\$ 32,327,617	\$34,987,972	35,748,177
	Allowance for Career Development	0	95,000	95,000
	Less Salary Lapse	0	(1,121,333)	(1,415,629)
	Allowance for Merit	0	700,000	900,000
	Reserve for Longevity	0	389,350	389,350
	Allowance for Career Ladder	0	125,000	175,000
3010	Net Salaries & Wages	\$ 32,327,617	\$ 35,175,989	\$ 36,949,353
3011	ARB Board Members	2,776,734	2,700,000	2,781,000
3015	Contract & Seasonal Labor	0	0	0
3020	Shift Differential	292,074	32,000	32,000
3030	Overtime	236,335	229,483	612,666
3040	Part-time & Seasonal Wages	310,794	302,500	213,220
TOTAL SALARIES, WAGES & RELATED		\$ 35,943,555	\$ 38,439,972	\$ 40,588,239
<u>EMPLOYEE BENEFITS & RELATED</u>				
3501	Group Health Insurance	6,659,374	6,895,202	7,410,000
3503	Workers' Compensation Insurance	112,906	95,000	95,000
3504	Group Life & LTD Insurance	90,843	93,200	98,860
3505	Group Dental Insurance	226,669	226,980	226,980
3507	Unemployment Insurance	17,189	224,100	226,800
3520	Retirement	6,317,656	4,638,767	5,571,435
3526	FICA Medicare	513,550	557,378	588,529
3527	Social Security	191,427	186,155	185,642
TOTAL EMPLOYEE BENEFITS & RELATED		\$ 14,129,613	\$ 12,916,782	\$ 14,403,246
<u>OFFICE & FIELD OPERATIONS</u>				
4001	Office Supplies	115,839	155,586	165,244
4003	Office Equipment Maintenance	371,233	455,450	455,450
4011	Telephone & Communication Service	194,816	289,843	289,843
4020	Copier Leases	84,799	94,000	94,000
4021	Copier Supplies & Maintenance	95,213	145,390	145,390
4030	Mapping Reproduction & Supplies	265	5,000	2,500
4040	Public Notice Advertising	7,986	18,000	18,000
4050	Security Services	144,317	159,750	159,750
4060	Field Travel, Vanpool & Other Exp	946,000	1,080,868	1,114,168
4070	Appraisal Supplies	6,411	13,140	13,370
4080	Vehicle Gasoline & Maintenance	19,491	34,000	34,000
4090	Records Storage & Supplies	625	1,500	1,500
4092	Records Conversion Services	0	0	0
4097	Employee Recognition Activities	7,574	12,000	12,000
4100	Postage, Mailing, & Handling Svcs.	1,905,890	2,172,000	2,172,000
4200	Professional Registration & Dues	67,385	75,375	75,795
4202	Seminars & Other Tuition	160,466	227,027	234,279
4212	Education Travel & Expenses	129,685	126,500	161,373
4213	Books, Manuals & Publications	263,417	252,632	283,916
4501	Printing, Forms, & Stationery	83,954	80,150	80,150
4530	Paper, Copier & Printer	113,438	135,483	135,483
TOTAL OFFICE & FIELD OPERATIONS		\$ 4,718,803	\$ 5,533,694	\$ 5,648,211

2017 BUDGET WITH COMPARISONS
2016 BUDGET & 2015 ACTUAL

Account Number	Account Name	2015 ACTUAL	2016 BUDGET	2017 BUDGET
<u>COMPUTER OPERATIONS</u>				
5010	Computer Leasing	0	0	0
5020	CPU & Related Maintenance	121,822	104,000	104,000
5030	Other Computer Maintenance	33,738	11,000	11,000
5040	Computer Supplies	17,600	33,850	33,850
5050	Software Lease & Maintenance	1,446,042	1,212,984	1,212,984
5060	Teleprocessing Lines & Installation	4,212	17,500	17,500
TOTAL COMPUTER OPERATIONS		\$ 1,623,413	\$ 1,379,334	\$ 1,379,334
<u>PROFESSIONAL SERVICES</u>				
5510	Financial Auditing	55,750	60,300	0
5520	Legal Services	9,435,515	10,983,967	10,983,967
5525	Arbitration Fees & Services	161,050	200,000	200,000
5526	State Office of Admin Hearings	0	5,000	5,000
5530	Appraisal Services	1,477,839	1,506,295	1,506,295
5550	Other Professional Services	602,163	543,760	573,925
5551	Mapping & Records Maintenance	1,064,951	1,320,722	0
TOTAL PROFESSIONAL SERVICES		\$ 12,797,268	\$ 14,620,044	\$ 14,660,587
<u>OFFICE SPACE, UTILITIES & RELATED</u>				
6100	Office Space	2,420,208	2,421,904	2,421,904
6150	Utilities	433,190	590,000	590,000
6200	Building & Fixture Maintenance	1,299,232	1,524,650	1,524,650
6400	Casualty & Liability Insurance	131,088	130,000	130,000
TOTAL OFFICE SPACE, UTILITIES & RELATED		\$ 4,283,718	\$ 4,666,554	\$ 4,666,554
<u>FIXED ASSETS PURCHASES</u>				
6501	Capital Purchases	157,303	150,000	150,000
TOTAL FIXED ASSETS PURCHASES		\$ 157,303	\$ 150,000	\$ 150,000
TOTAL BUDGET		\$ 73,653,672	\$ 77,706,380	\$ 81,496,171

TEXAS PROPERTY TAX CODE SECTION

The following schedules are provided pursuant to Section 6.06(a) of the Texas Property Tax Code:

Schedule of Positions

Schedule of Appraisal Review Board Members

Salary Schedule and Provisions

General Provisions

Employee Benefits Schedule – General & Special Provisions

Appraisal Review Board Provisions

2017 Capital Expenditures

2017 Estimated Cost Allocation to Taxing Units

SCHEDULE OF APPRAISAL DISTRICT POSITIONS - 2017 BUDGET

Position	Salary Grade	Number of Positions
Accounting Specialist	16	3
Accounts Examiner	16	3
Admin Tech	8	44
Administrative Assistant	15	6
ADP Supervisor	15	1
Agent Section Coordinator	20	1
Appraisal Data Analyst	22	2
Appraisal Hearing Supervisor	21	1
Appraisal Information Specialist	21	2
Appraisal Operations Specialist	23	1
Appraisal Support Technician	19	2
Appraiser I	15	69
Appraiser II	16	22
Appraiser III	17	56
Appraiser IV	18	14
ARB Operations Manager	23	1
Assistant Chief Financial Officer	26	1
Assistant CIO for Applications	27	1
Assistant CIO for Systems	27	1
Assistant Commercial Valuation Manager	21	1
Assistant Director, Info & Assist	22	1
Assistant Field Manager	21	1
Assistant Network Administrator	21	1
Assistant Valuation Manager	21	1
Associate Chief Appraiser, Appraisal Operations	26	1
Associate Chief Appraiser, Bus & Indus	26	1
Associate Chief Appraiser, Commercial	26	1
Associate Chief Appraiser, Residential	26	1
Associate Chief Appraiser, Review	26	1
Audio Visual Specialist	15	1
Benefits Administrator	20	1
Budget & Finance Manager	23	1
Business Systems Administrator	18	1
Chief Appraiser	-	1
Chief Communications Officer	27	1
Chief Financial Officer	27	1
Chief Human Resources Officer	27	1
Chief Information Officer	-	1
Chief Legal Officer	28	1
Chief of Hearings	27	1
Chief of Operations	27	1
Chief, Executive Programs	27	1
Commercial Valuation Analyst	19	19
Commercial Valuation Manager	23	1
Commercial Valuation Supervisor	22	1
Community Relations Representative	19	1
Corrections Manager	23	2
Counter Supervisor	20	1
Deputy Chief Appraiser	-	1
Director, ARB Operations	24	1
Director, Audit Support	24	1

SCHEDULE OF APPRAISAL DISTRICT POSITIONS - 2017 BUDGET

Position	Salary Grade	Number of Positions
Education & Development Manager	23	1
Engineer	21	2
Equipment Operator	12	2
Executive Assistant	19	1
Executive Projects Manager	27	1
Exemption Coordinator	20	1
Exemption Specialist	12	13
Field Manager	23	2
Field Supervisor	21	1
Geographic Information Specialist	15	10
GIS Analyst	22	3
GIS Programming Manager	25	1
Hearings Specialist	10	8
Hearings Supervisor	14	1
HR Generalist	18	1
HRIS Administrator	20	1
HRIS Systems Specialist	19	1
Human Resources Manager	23	1
Industrial Manager	23	1
Internal Auditor	20	1
Jurisdiction Coordinator	18	3
Legal Assistant	15	1
Legal Counsel	23	6
Mapping Supervisor	20	1
Network Administrator	25	2
Network Service Technician	18	1
New Subdivision Coordinator	20	1
Paralegal	16	1
Payroll Specialist	19	2
Personal Property Manager	23	1
Processing Supervisor	22	1
Program Administrator	17	1
Program Data Design Analyst	22	15
Project Specialist	20	2
Public Affairs Officer	15	1
Public Information Technician	16	3
Purchaser	14	2
Purchasing & Facilities Manager	23	1
Records Management Officer	20	1
Records Management Specialist	11	2
Recruiter	20	1
Research Associate	18	6
Residential Valuation Specialist	20	1
Resolution Coordinator	20	1
Review Appraisal Manager	23	1
Review Appraiser	20	14
Security Manager	23	1
Security Officer	14	5
Security Officer Captain	16	1
Security Officer Lieutenant	16	1
Senior Accounting Specialist	17	1

SCHEDULE OF APPRAISAL DISTRICT POSITIONS - 2017 BUDGET

Position	Salary Grade	Number of Positions
Senior Accounts Examiner	19	1
Senior Admin Tech	11	25
Senior Commercial Valuation Anaylst	21	7
Senior Director, Info & Assist	26	1
Senior Director, Jurisdiction Communications	26	1
Senior Exemption Specialist	15	6
Senior Financial Officer	27	1
Senior Geographic Information Specialist	18	1
Senior GIS Analyst	24	1
Senior Hearings Specialist	13	1
Senior Legal Counsel	25	1
Senior Paralegal	17	1
Senior Program Data Design Analyst	25	4
Senior Public Affairs Officer	20	3
Senior Research Associate	20	4
Senior Review Appraiser	25	4
Senior Supervising Appraiser	20	6
Senior Support Supervisor	16	5
Senior Systems Support Spec	16	2
Senior Technical Assist Spec	14	20
Senior Telephone Information Spec	14	2
Senior Valuation Analyst	20	13
Sharepoint Administrator	25	1
Special Audit Manager	23	1
Supervising Appraiser	19	9
Supervising Examiner	21	1
Supervising Paralegal	21	1
Support Coordinator	15	2
Support Specialist	10	12
Systems Administrator	21	1
Systems Support Coordinator	20	1
Systems Support Specialist	14	4
Systems Support Supervisor	21	1
Team Lead-CAMA	25	1
Team Lead-Data	25	1
Team Lead-Development	25	1
Team Lead-Relationships	25	1
Technical Assistance Specialist	11	29
Technical Program Specialist	16	7
Technical Writer	21	1
Technology Project Specialist	22	1
Telephone Center Coordinator	20	1
Telephone Information Spec	11	19
Training & Development Coordinator	15	1
Training & Development Specialist	20	1
Valuation Analyst	18	22
Valuation Manager	23	2
Valuation Supervisor	22	2
	150	650

SCHEDULE OF APPRAISAL REVIEW BOARD MEMBERS
2017 BUDGET

<u>Position</u>	<u>Salary Group</u>	<u>Number of Positions</u>
ARB Member	per diem	<u>190</u>
TOTAL		<u>190</u>

2017 SALARY SCHEDULE AND PROVISIONS

A. Classified Positions Salary Schedule.

<i>Grade</i>	<i>Minimum</i>	<i>Midpoint</i>	<i>Maximum</i>
8	\$25,712	\$32,397	\$39,082
9	\$27,512	\$34,665	\$41,818
10	\$29,438	\$37,091	\$44,745
11	\$31,498	\$39,688	\$47,877
12	\$33,703	\$42,466	\$51,229
13	\$36,062	\$45,439	\$54,815
14	\$38,587	\$48,619	\$58,652
15	\$41,288	\$52,023	\$62,758
16	\$44,178	\$55,664	\$67,151
17	\$47,270	\$59,561	\$71,851
18	\$50,579	\$63,730	\$76,881
19	\$54,120	\$68,191	\$82,262
20	\$57,908	\$72,965	\$88,021
21	\$61,962	\$78,072	\$94,182
22	\$66,299	\$83,537	\$100,775
23	\$70,940	\$89,385	\$107,829
24	\$75,906	\$95,642	\$115,377
25	\$81,219	\$102,337	\$123,454
26	\$86,905	\$109,500	\$132,095
27	\$92,988	\$117,165	\$141,342
28	\$99,497	\$125,367	\$151,236
29	\$106,462	\$134,142	\$161,822
30	\$113,914	\$143,532	\$173,150

B. Schedule of Positions Outside the Classification Schedule.

Chief Appraiser	\$230,000
Deputy Chief Appraiser	\$175,000
Chief Information Officer	\$158,311

C. It is expressly provided that the chief appraiser may, with the approval of the board of directors, grant merit salary increases to district employees. Such merit increases shall be subject to the following:

1. The maximum merit salary increase for an employee may not exceed 6%.
2. The maximum limit shall not exceed the amount specifically budgeted as "Allowance for Merit Increases".
3. For an employee to be eligible for a merit salary increase, the following criteria must be met:
 - (i) the employee must have been employed by the district for at least six continuous months prior to the award;
 - (ii) at least six months must have elapsed since the employee's last promotion;

- (iii) the employee's job performance and productivity must be consistently above that normally expected or required as evidenced by performance evaluation; and,
 - (iv) an employee may not receive more than one merit salary increase in a single fiscal year.

- D. The chief appraiser may, with the approval of the board of directors, award quality service incentive salary increases, disbursed as a single payment, to employees under the following conditions:
 1. The employee must have been employed by the district in a full-time position for at least 6 continuous months and must not have received a promotion or merit salary increase for a minimum of 6 months prior to the award;
 2. The employee's high level of performance must be documented by the performance evaluation system;
 3. The lump sum award may be no more than 5% of the employee's annual base rate of pay;
 4. Six months must have elapsed since the employee's last quality salary increase;
 5. Funding for such increases will be made only from the overall limits specified under Paragraph C, above; and,
 6. A quality salary increase is a one-time payment and does not increase the salary level for the following year.

- E. The chief appraiser may, with the approval of the board of directors, award a quality service incentive salary increase and a merit salary increase concurrently. The combined award may not exceed 7% of the employee's annual base rate of pay.

- F. Career Development Program. The chief appraiser is authorized to award achievement pay according to the district's policy under the Career Development Program. The program provides for one-time achievement payment to employees having earned the Registered Professional Appraisal professional designation or, for non-appraisal employees, for completing approved coursework, or employees having earned the Geographic Information Systems professional designation. Employees who receive or hold more than one advanced designation (RPA, IAAO, MAI, CAI, TALCB, CTA, CFE) may be awarded recurring annual achievement payments.

- G. TDLR Career Ladder Program. The chief appraiser is authorized to promote staff upon reaching levels I, II, III and IV Property Tax Professional Appraiser designations with the Texas Department of Licensing and Regulation (TDLR) and satisfaction of such other requirements as the chief appraiser may impose. The schedule below (career ladder) is the authorized salary increase or promotion upon reaching these TDLR milestones. The minimum months in designation varies dependent on TDLR rules. A promotion to the next pay grade under this plan must result in a salary increase of not less than 3%. This schedule does not preclude a promotion to a higher pay grade if the staff member is otherwise

qualified for a currently open position requiring TDLR registration. Promotions under these TDLR milestones are made within the current occupied budgeted position and the salary differential is funded through salary lapse.

Position Title or Equivalent	TDLR Designation	Minimum Months in Position & Designation	Pay Grade for Position
Appraiser I	Level I	6	15
Appraiser I	Level II	6	15
Appraiser II	Level III	12	16
Appraiser III	Level IV RPA		17

- H. The chief appraiser is authorized to pay a full-time employee who is a state approved instructor a stipend of \$500 if the employee teaches two or more state certification courses during a calendar year.

- I. The chief appraiser may substitute other classified position titles for those listed in this Schedule of Positions when the chief appraiser finds that such reclassifications are necessary for effective performance of the district's responsibilities. The chief appraiser is further authorized to reassign an employee serving in a classified position to another classified position or to move the employee to another salary within the employee's salary grade as necessary to maintain desirable salary relationships:
 - 1. between and among employees of the district; or
 - 2. between employees of the district and employees who hold similar positions in the relevant labor market;
 - 3. to retain staff essential to the district's succession plans; or,
 - 4. to establish a 90-day dual incumbency for a position for the purpose of knowledge transfer prior to resignation or retirement of one of the incumbents.

- J. The chief appraiser is authorized to pay salaried exempt employees straight time for compensatory time worked during periods when paid leave is restricted or when the chief appraiser finds it essential for effective performance of critical functions.

- K. The chief appraiser is authorized to pay a full-time employee a stipend of up to \$500 for translation services per calendar year to ensure quality services to the limited english proficient populations.

GENERAL PROVISIONS

A. Mileage Allowance.

1. Use of Privately Owned Vehicles. Employees, board members, or persons assigned to the district by another agency under contract who use their privately owned vehicles on official district business are authorized reimbursement at the rate authorized by the Internal Revenue Service as the standard mileage deduction rate (currently \$0.54/mile for 2016).
 - a. Phase Out of Mileage and Expense Allowances. The chief appraiser is authorized to develop a schedule for phasing out mileage and expense allowances as appropriate to reflect the district's increasing reliance on photographic reinspection of property. As appropriate under that schedule, the chief appraiser may increase the salary of an employee or position that receives an allowance to offset the phased reduction.
2. Monthly Vehicle Allowance. The chief appraiser is authorized to pay a monthly vehicle allowance for appraisal positions whose job responsibilities require that they spend the majority of their time outside the district headquarters in an amount not to exceed \$450 per month. Division directors shall annually prepare a list of the employees and position numbers for which the monthly allowance is authorized. The total amount paid under this provision may not exceed the amount allocated in this budget for that purpose.
3. Idling Allowance. Appraisers performing as group leaders, or who are assigned to pre-review, review and quality control functions are authorized an "idling allowance" of \$1.00 per hour in addition to reimbursement for actual mileage as provided in the district's appraisal manual.
4. Audit Support Services. Commissioned officers and employees assigned to the Audit Support Services Division who engage in investigations or field audits are entitled to a vehicle allowance not to exceed \$450 per month for official use of their personal vehicles.
5. Reimbursement at Standard Mileage Rate. If the monthly vehicle allowance is insufficient to reimburse a designated employee for miles actually driven in the conduct of district business, that employee's reimbursement for the period will be calculated at the standard mileage rate.
6. Other Provisions. An employee who is transferred from a position that is authorized a vehicle allowance may be transferred at a higher salary step to offset the loss of a vehicle allowance. If an employee who is authorized a vehicle allowance uses a district owned vehicle on any day, the vehicle allowance is prorated by the number of days the district owned vehicle is used whether part of a day or a whole day.

- B. Expense Allowance. The following listed positions are authorized an expense allowance in lieu of a vehicle allowance, in-district mileage, and incidental in-district expenses at the monthly rate indicated:

Chief Appraiser	\$850
Deputy Chief Appraiser	\$550
Chief of Operations	\$550
Associate Chief Appraiser, Appraisal Operations	\$550
Chief Information Officer	\$550
Chief Financial Officer	\$550
Senior Director, Jurisdiction Communications	\$550
Senior Director, Information & Assistance	\$550

- C. Uniform Cleaning Reimbursement. Commissioned security officers who are required to regularly wear district-provided uniforms are entitled to reimbursement for the actual cost of professional uniform cleaning in an amount not to exceed \$45.00 per month.

- D. Cell Phone Allowance. In lieu of providing a district-owned cellular phone to an employee whose duties require it, the chief appraiser is authorized to pay a monthly cellular phone allowance as follows: \$10 to \$45 per month, depending on the number of minutes of business use projected, for basic cellular service, and an additional \$50 per month for data services if the chief appraiser determines that data services are appropriate. An employee who receives a cellular phone allowance under this provision must, at his or her own expense, obtain equipment and cellular services meeting minimum specifications that are approved by the chief appraiser or his designee. The equipment and service must be in working order at all times during the period for which an allowance is paid. The total amount paid under this provision may not exceed the amount allocated in this budget for cellular phone and data services.

- E. Travel Expenses.

1. Non-overnight Travel.

- a. The chief appraiser, a member of the board of directors, a district employee, or a person assigned to the district by another agency under contract who has been designated to represent the chief appraiser or a board member, or a district employee who is traveling with the chief appraiser or a board member may receive reimbursement of actual expenses for meals when traveling outside the district's boundaries. The meal receipts must be attached to the travel expense report if the amount claimed for a meal exceeds \$9.00.
- b. Other employees may be reimbursed for meal expenses incurred on a day the employee conducts official business outside the district's boundaries for no fewer than six consecutive hours on the day the expenses are incurred in an amount not to exceed \$36 per day. However, the maximum reimbursement for breakfast may not exceed \$9.00, exceed \$17 for lunch, or exceed \$19 for dinner. Meal receipts must be attached to the travel expense report if the amount claimed for a meal exceeds \$9.00.

2. Overnight Travel.

- a. The chief appraiser, a member of the board of directors, a district employee, or a district employee who is traveling with the chief appraiser or a board member may receive reimbursement for actual expenses for meals, lodging, and incidental expenses authorized by this section. In lieu of claiming actual expenses, a person may elect to be reimbursed in the manner provided for in subsection 2.b. of this section.
- b. Employees and members of the board of directors who elect to do so, may be reimbursed for actual expenses of lodging at a commercial lodging establishment and an allowance for meals in an amount not to exceed the maximum per diem allowance authorized for that locality in the current federal travel regulations unless the chief appraiser determines, in advance of the travel, that local conditions necessitate a change in the lodging rate for a particular location. An employee may reduce the maximum meal reimbursement rate for a locality and use the reduction to increase the maximum lodging reimbursement rate for the locality, and may also be reimbursed for authorized incidental expenses. In calculating the applicable meal allowance for a particular locality, the amounts allowed for the first and last day of travel are reduced to 50% of the daily federal rate if the person begins travel after 1 p.m. on the first day or returns and ends travel before 1 p.m. on the last day.
- c. A person authorized to be reimbursed for overnight travel expenses may receive reimbursement for the person's actual expenses for meals and lodging when traveling outside the continental United States.
- d. Persons who are authorized to claim actual expenses and elect to do so must provide lodging and meal receipts with their travel expense report. An employee who claims expenses on a per diem basis must submit lodging receipts with the travel expense report.
- e. Allowable incidental expenses include taxes levied on lodging, taxi fare, airport limousine service, airport or other parking charges, and business-related telephone calls and/or reasonable internet connection charges. Receipts for incidental expenses must be attached to the travel expense report.

3. Transportation Expenses.

- a. Employees and board members who travel outside the district by personal auto will be reimbursed for mileage at the same rate used for in-district mileage. Travel must be by the most direct route. If two or more employees are attending the same business function, they should travel together if possible to minimize mileage expense. A person's total mileage reimbursement for a trip may not exceed the cost of round trip air travel by coach or economy class. The chief appraiser may require an employee traveling outside the district to use a district-owned vehicle instead of the employee's personal vehicle or other form of conveyance.
- b. Persons who travel by air must fly coach or economy class. All flight arrangements should be made through the district's travel coordinator in the Office of Chief Appraiser.

4. Purchase of Alcoholic Beverages Prohibited. A person who travels on official business may not claim reimbursement from district funds for the purchase of alcoholic beverages.
 5. Completion of Travel Expense Reports. After completion of authorized out-of-district travel, the person may not be reimbursed for travel expenses until the person submits a written travel report on the form prescribed by the chief appraiser. The form must clearly outline the official purpose of the travel and summarize, on a daily basis, the duties performed and expenses incurred or per diem claimed.
- F. Reappropriations. Monies received by the district as payment for copying charges are reappropriated to the district to offset the cost of making such copies. Monies received by the district under a Grant or Interlocal Contract are appropriated to the district to pay the cost of conducting the activity or activities authorized by such Grant or Contract. To the extent penalties may be imposed under any section of the Tax Code, penalty monies actually received are reappropriated to the district to offset the cost of operations, less any amounts required by law to be remitted to the appropriate taxing units.
- G. Vanpool Subsidy. The district is a member of the METRO STAR Vanpool program. Employees who participate are authorized a monthly subsidy of \$35.00. Participation is limited to an appropriation of \$42,000.
- H. Employee Recognition Activities. There is appropriated the sum of \$12,000 to be used for service awards and other employee recognition activities as approved by the board of directors.
- I. General Counsel. Pursuant to §6.05(j), Property Tax Code, the board may employ a general counsel to the district to serve at the will of the board. The general counsel shall provide counsel directly to the board and perform other duties and responsibilities as determined by the board. The general counsel is entitled to compensation as authorized by the board and funds are provided in Account 5520 - Legal Services.

EMPLOYEE BENEFITS SCHEDULE
GENERAL & SPECIAL PROVISIONS

- A. Health, Dental and Vision Benefits. The district provides health, dental and vision benefits for all full time regular employees. New employees are covered on the first day of the month following a 30-day waiting period. Under the district's Flexible Benefits Plan, employees may select from a variety of coverage, but must select basic health coverage. The cost of coverage selections under the plan, which exceeds the provided allowance, is borne by the employee. The board of directors determines the amount of the allowance for employees and retirees when health, dental and vision contracts are renewed near the end of the year. Eligible retirees may continue coverage under the district's health plan until age 65 or eligible for Medicare. Retirees eligible for Medicare may enroll in a Medicare Supplement Plan offered by the Texas Association of Counties.
- B. Life and Disability Insurance. The district also provides life and disability insurance to all full time regular employees. The cost of life and disability insurance for the employee is paid by the district. Employees may purchase additional life and accidental death insurance for themselves and their dependents under the Flexible Benefits Plan. Retirees are not eligible for coverage under the life and disability plans.
- C. Texas County & District Retirement System (TCDRS). This budget provides funding for the employee retirement plan. The employee contribution rate is 7% of salary and the district contribution rate is composed of a TCERS actuarial determination plus an amount for an annuitant COLA if authorized by the board of directors, and the supplemental death benefit component. The TCERS Supplemental Death Benefits Fund provides for a lump-sum death benefit payment to the beneficiary of a deceased employee-member equal to a year's salary in addition to a return of the deceased's personal deposits and interest earnings or a Deferred Service Retirement pension benefit. Upon the death of a retired member, the beneficiary is provided a lump-sum payment equal to \$5,000.
- D. Workers' Compensation Insurance. All full time regular and part-time employees, and members of the board of directors and appraisal review board are protected with workers' compensation insurance. This budget provides coverage through participation in the Texas Municipal League Intergovernmental Risk Pool.
- E. Unemployment Insurance. The district provides unemployment insurance for all district employees.
- F. Social Security. District employees do not participate in the federal Old Age, Survivors, and Disability Insurance (OASDI) program. Part-time employees who are not members of the Texas County & District Retirement System are required to contribute to Social Security. This budget provides for the employer's matching amount.
- G. Federal Medicare Coverage. Most district employees participate in the Medicare portion of the Federal Insurance Contribution Act (Social Security). Employees contribute to this program at a rate of 1.45% of wages paid. Funding is provided in this budget for the employer's matching amount.

- H. Longevity Pay. All full time regular employees, beginning with the first pay period after their first year of service with the district, are entitled to longevity pay calculated on the basis of \$5.00 per month per year of service, not to exceed \$150.00 per month. Employees returning to employment with the district after a break in service of less than five years are not entitled to longevity pay until after completing one year of continuous service. After the one-year waiting period, the employee's prior service of whole years is included in the calculation of longevity pay.
- I. Sick Leave. All full time regular employees are entitled to sick leave subject to the following conditions:
1. An employee will earn sick leave entitlement beginning with the first day of employment with the district and ending on the last day of duty. Sick leave entitlement shall be earned at the rate of 3.6920 hours per regular pay period, not to exceed 12 days per year, and shall accumulate with the unused amount of such leave carried forward each pay period. Unpaid time does not earn sick leave.
 2. Sick leave may be taken any time after accrual, subject to the terms set forth in the district's sick leave policy.
 3. An employee who resigns, is dismissed, or separated from district employment may not be paid for unused sick leave, but the estate of a district employee who dies while employed by the district shall be paid one-half of the employee's unused sick leave, or for 80 hours of sick leave, whichever is less.
- J. Employee Vacations. All full time regular employees are entitled to vacation leave. Such entitlement is calculated on 26 pay periods per year in accordance with the following schedule:

<u>Years of District Service</u>	<u>Hours Earned Per Pay Period</u>	<u>Maximum Hours That Carry Over To Next Year</u>
First 2 years	3.23	168
2 to under 5 years	3.69	288
5 to under 10 years	4.15	324
10 to under 15 years	4.61	360
15 to under 20 years	5.53	432
20 to under 25 years	6.46	504
25 to under 30 years	7.38	576
30 or more years	8.30	647

Vacation with pay may not be granted until the employee has had continuous employment with the district for six months, although credit will be earned during that period. The chief appraiser may authorize additional unpaid vacation leave as a supplement to vacation with pay. An employee who resigns, is dismissed, or separated from district employment is entitled to be paid for all vacation time duly accrued at the time of separation, provided the employee has had continuous employment with the district for six months. For an employee who has a break in service, total HCAD employment is calculated in the same manner as with longevity pay. After a one-year waiting period, the employee's prior service of whole years is included in the calculation of vacation hours.

- K. Emergency Leave. The chief appraiser may grant emergency leave of up to three working days to a full time regular employee because of a death of the employee's spouse, parent, step-parent, child, step-child, brother, sister, grandparent, grandchild, spouse's parent, or spouse's children. The chief appraiser may grant leave for any other purpose that justifies emergency leave.

- L. Other Paid Leaves. Full time regular employees of the district are entitled to paid leaves for holidays, military duty, and jury duty in accordance with the district's policy on such leaves.

APPRAISAL REVIEW BOARD PROVISIONS

The Appraisal Review Board of Harris County (ARB) is authorized by Section 6.41 of the Texas Property Tax Code as an entity separate from the Harris County Appraisal District. The Code contains provisions about the separation of the two entities, and requires the board of directors to fund certain activities of the appraisal review board. ARB members are not employees of the district and are not eligible for appointment to the ARB if ever employed by the district. Other restrictions apply.

A. Appraisal Review Board Member Per Diem and Duties and Per Diem of ARB Officers.

1. ARB members are compensated at a flat per diem rate for each full day or half day of service on the appraisal review board that equals or exceeds eight hours, exclusive of lunch. A full day is defined as greater than four hours, exclusive of lunch. A half day is defined as less than four hours, exclusive of lunch. ARB members attending ARB meetings will receive half day per diem. ALG "ARB Leadership Group" team leaders will receive an additional \$49.50 per month for meeting attendance. The per diem rate for such members shall be paid as follows:

Years of Board Service	Full Day Per Diem	Half Day Per Diem
1st or 2nd Year	\$167 per full day	\$84 per half day
3rd or 4th Year	\$185 per full day	\$93 per half day
5 th Year or more	\$204 per full day	\$102 per half day

The board of directors may provide a per diem of up to \$211 per full day for the chairman of the ARB. Service shall mean sitting as a member of a panel, participating at a meeting of the full board, or attending training required by law or approved by the board of directors. The board of directors may provide that service for an officer or member of the ARB includes such other activities as the board may prescribe. The chairman of the appraisal review board determines panel and training schedules for ARB members in consultation with the ARB administrator.

2. A member must serve more than four hours, exclusive of lunch, and be discharged for the day by ARB Support personnel or by the ARB Executive office to receive the full day per diem. It is anticipated that members will serve the time required to properly discharge their obligations. For service of four hours or less, a member shall receive the half day per diem. Regardless of the number of hours served in excess of eight in a 24-hour period, a member will not be compensated at more than the full day per diem rate specified above.

B. Appropriation for ARB Member Per Diem and Related Items

1. Appropriation for ARB member per diem compensation is \$2,781,000.
2. Appropriation for ARB member coverage for Unemployment Insurance is \$51,300.

3. Appropriation for the matching portion of OASDI and FICA, is \$215,042.

- C. Appropriation for Appraisal Review Board Attorney. The Appraisal Review Board shall use the services of the county attorney for legal counsel. In the event the county attorney is unable or declines to represent the board in a lawsuit to which the board is made a party, the board may employ and compensate private counsel, subject to a total appropriation of \$5,000.
- D. Appropriation for Clerical Assistance. The appraisal office provides clerical assistance to the appraisal review board, including assisting the board with the scheduling and arranging of hearings. The appropriation for clerical assistance appears elsewhere in this budget.
- E. Appropriation for Texas Comptroller ARB Training. The Property Tax Code provides for the Texas State Comptroller to provide mandatory training of ARB members. The amount of \$12,500 is appropriated for that purpose.
- F. Appropriation for TALCB Licensed Appraiser Instruction. The ARB may contract with a Texas Appraiser Licensing and Certification Board (TALCB) licensed appraiser to instruct the members of the appraisal review board on valuation methodology if an appropriation for the instruction is provided. The amount of \$3,500 is appropriated for that purpose.
- G. A member of the board of directors, the chief appraiser, or any other employee of the district may not communicate with a member of the appraisal review board about a course provided by the Comptroller or any other matter presented or discussed in training. In addition, the Property Tax Code prohibits communication with the appraisal review board by an officer or employee of a taxing unit or by an attorney who represents or whose law firm represents the appraisal district or a taxing unit that participates in the appraisal district.

2017 CAPITAL EXPENDITURES

ORG	ACCT	ITEM	QTY	NEW (N) REPL (R)	UNIT COST	TOTAL COST
8006	6501	Field Appraiser Mobile Devices	150	N	1,000	150,000
						<u>\$150,000</u>

2017 ESTIMATED COST ALLOCATION TO TAXING UNITS

The Harris County Appraisal District is funded by the taxing units it serves. As provided in Section 6.06(d), Tax Code, "(E)ach taxing unit participating in the district is allocated a portion of the budget equal to the proportion that the total dollar amount of property taxes imposed in the district by the unit for the tax year in which the budget proposal is prepared bears to the sum of the total dollar amount of property taxes imposed in the district by each participating unit for that year."

Section 6.06(d), Tax Code, requires "(E)ach taxing unit shall pay its allocation in four equal payments to be made at the end of each calendar quarter, and the first payment shall be made before January 1 of the year in which the budget takes effect." It has been the practice of the Harris County Appraisal District to invoice the taxing units for their quarterly payments approximately 45 days prior to the due date. Since the first quarter billing for 2017 will be prepared and delivered on or about November 15, 2016, and before the time some 2016 tax rates have been determined or received, the first quarter 2017 will be invoiced using incomplete information. The second quarter invoice will reflect the necessary corrections.

This estimate is prepared in May 2016 using 2015 tax rates and levies.

ESTIMATED 2017 COST ALLOCATION TO TAXING UNITS

Jur No.	Taxing Unit	Tax Year	Taxable Value as of 10/7/2016	Tax Rate	Total Levy	Frozen Levy Loss	Adjusted Levy	Allocation Ratio	2017 Budget Allocation
<u>SCHOOL DISTRICTS</u>									
001	HOUSTON ISD	2015	163,486,963,805	1.197	1,956,448,496	52,377,775	1,904,070,721	0.1742324	14,199,270
002	DEER PARK ISD	2015	7,558,424,961	1.557	117,662,001	746,863	116,915,138	0.0106983	871,874
003	WALLER ISD	2015	1,216,992,196	1.440	17,524,688	254,438	17,270,250	0.0015803	128,790
004	CYPRESS FAIRBANKS ISD	2015	46,570,610,112	1.440	670,616,786	9,385,375	661,231,411	0.0605061	4,931,018
005	CROSBY ISD	2015	1,634,453,221	1.670	27,295,369	1,063,969	26,231,400	0.0024003	195,616
006	CHANNELVIEW ISD	2015	2,801,485,884	1.415	39,641,025	496,240	39,144,785	0.0035820	291,915
007	NEW CANEY ISD	2015	61,075,126	1.670	1,019,955	41,412	978,543	0.0000895	7,297
008	ALIEF ISD	2015	14,449,247,171	1.280	184,950,364	891,029	184,059,335	0.0168424	1,372,590
009	ALDINE ISD	2015	18,322,467,224	1.286	235,606,407	1,125,493	234,480,914	0.0214562	1,748,600
015	GALENA PARK ISD	2015	7,987,782,446	1.513	120,887,100	1,414,847	119,472,253	0.0109323	890,943
016	GOOSE CREEK ISD	2015	7,703,626,324	1.432	110,307,455	1,387,284	108,920,171	0.0099668	812,253
017	KLEIN ISD	2015	19,097,520,385	1.410	269,275,037	6,470,269	262,804,768	0.0240480	1,959,821
018	HUMBLE ISD	2015	14,773,246,085	1.520	224,553,340	6,664,161	217,889,179	0.0199380	1,624,871
019	KATY ISD	2015	20,437,030,705	1.517	309,948,008	2,658,440	307,289,568	0.0281186	2,291,558
020	LA PORTE ISD	2015	9,206,332,616	1.450	133,491,823	492,207	132,999,616	0.0121702	991,821
021	PASADENA ISD	2015	12,327,339,770	1.350	166,419,087	4,267,819	162,151,268	0.0148377	1,209,215
023	SHELDON ISD	2015	5,162,482,469	1.410	72,791,003	92,404	72,698,599	0.0066523	542,137
024	SPRING ISD	2015	11,384,610,653	1.470	167,349,223	3,073,656	164,275,567	0.0150321	1,225,056
025	SPRING BRANCH ISD	2015	30,536,440,509	1.395	425,830,663	21,905,668	403,924,995	0.0369612	3,012,200
026	TOMBALL ISD	2015	9,093,710,931	1.340	121,855,726	2,002,592	119,853,134	0.0109672	893,784
027	CLEAR CREEK ISD	2015	13,608,188,489	1.400	190,514,639	5,260,898	185,253,741	0.0169517	1,381,497
028	DAYTON ISD	2015	3,533,646	1.432	50,591	737	49,854	0.0000046	372
029	PEARLAND ISD	2015	164,482,220	1.416	2,328,410	192,237	2,136,173	0.0001955	15,930
030	HUFFMAN ISD	2015	1,045,161,693	1.400	14,632,264	417,940	14,214,324	0.0013007	106,001
031	STAFFORD MSD	2015	7,941,441	1.230	97,684	4,945	92,739	0.0000085	692
<u>COUNTY-WIDE UNITS</u>									
040	HARRIS COUNTY	2015	412,363,474,106	0.419	1,728,751,392	0	1,728,751,392	0.1581898	12,891,862
041	HARRIS COUNTY FLOOD CONTROL	2015	402,280,621,384	0.027	109,943,294	0	109,943,294	0.0100604	819,883
042	PORT OF HOUSTON AUTHORITY	2015	402,238,644,724	0.013	53,980,426	0	53,980,426	0.0049395	402,550
043	HARRIS COUNTY HOSPITAL DIST	2015	402,282,533,910	0.170	683,880,308	0	683,880,308	0.0625786	5,099,918
044	HARRIS COUNTY DPT OF EDUCATION	2015	412,426,872,186	0.005	22,361,785	0	22,361,785	0.0020462	166,759
<u>COLLEGE DISTRICTS</u>									
045	LONE STAR COLLEGE SYSTEM DISTRICT	2015	130,966,431,247	0.108	141,312,779	594,709	140,718,070	0.0128764	1,049,380
046	LEE JR COLLEGE DISTRICT	2015	7,785,102,548	0.250	19,478,327	239,146	19,239,181	0.0017605	143,473
047	SAN JACINTO COMMUNITY COLLEGE DISTRICT	2015	48,976,865,040	0.176	86,093,003	0	86,093,003	0.0078780	642,024
048	HOUSTON COMMUNITY COLLEGE SYSTEM	2015	183,914,933,645	0.102	187,486,562	0	187,486,562	0.0171560	1,398,148
<u>CITIES</u>									
051	CITY OF BAYTOWN	2015	3,065,492,402	0.822	25,199,267	244,695	24,954,572	0.0022835	186,094
052	CITY OF BELLAIRE	2015	4,770,552,518	0.381	18,151,952	0	18,151,952	0.0016610	135,365
053	CITY OF BUNKER VILLAGE	2015	2,104,094,740	0.278	5,846,332	0	5,846,332	0.0005350	43,598

ESTIMATED 2017 COST ALLOCATION TO TAXING UNITS

Jur No.	Taxing Unit	Tax Year	Taxable Value as of 10/7/2016	Tax Rate	Total Levy	Frozen Levy Loss	Adjusted Levy	Allocation Ratio	2017 Budget Allocation
054	CITY OF DEER PARK	2015	2,403,138,592	0.714	17,166,869	0	17,166,869	0.0015709	128,019
055	CITY OF HEDWIG VILLAGE	2015	988,867,979	0.210	2,079,698	0	2,079,698	0.0001903	15,509
056	CITY OF EL LAGO	2015	221,789,455	0.580	1,287,022	0	1,287,022	0.0001178	9,598
057	CITY OF GALENA PARK	2015	513,684,051	1.037	5,329,215	0	5,329,215	0.0004877	39,742
058	CITY OF FRIENDSWOOD	2015	612,462,513	0.569	3,483,074	0	3,483,074	0.0003187	25,974
059	CITY OF PEARLAND	2015	753,814,974	0.705	5,316,657	208,168	5,108,489	0.0004675	38,096
060	CITY OF HILSHIRE VILLAGE	2015	218,676,673	0.488	1,067,317	0	1,067,317	0.0000977	7,959
061	CITY OF HOUSTON	2015	216,613,655,707	0.601	1,302,108,007	0	1,302,108,007	0.1191497	9,710,243
062	CITY OF HUMBLE	2015	1,671,562,106	0.200	3,343,124	0	3,343,124	0.0003059	24,931
063	CITY OF KATY	2015	740,254,186	0.527	3,899,067	0	3,899,067	0.0003568	29,077
064	CITY OF MISSOURI CITY	2015	244,116,175	0.545	1,329,652	0	1,329,652	0.0001217	9,916
065	CITY OF HUNTERS CREEK VILLAGE	2015	2,750,269,830	0.184	5,062,752	0	5,062,752	0.0004633	37,755
066	CITY OF JACINTO CITY	2015	404,033,482	0.784	3,165,821	0	3,165,821	0.0002897	23,609
067	CITY OF LEAGUE CITY	2015	140,847,100	0.574	807,758	0	807,758	0.0000739	6,024
070	CITY OF JERSEY VILLAGE	2015	1,080,559,008	0.743	8,023,151	0	8,023,151	0.0007342	59,831
071	CITY OF LA PORTE	2015	3,062,051,356	0.710	21,740,565	0	21,740,565	0.0019894	162,126
072	CITY OF MORGANS POINT	2015	298,121,304	0.819	2,441,974	0	2,441,974	0.0002235	18,211
073	CITY OF NASSAU BAY	2015	587,885,002	0.742	4,362,812	0	4,362,812	0.0003992	32,535
074	CITY OF PASADENA	2015	7,761,812,640	0.575	44,660,539	179,453	44,481,086	0.0040703	331,710
075	CITY OF PINEY POINT VILLAGE	2015	2,454,980,531	0.255	6,263,637	0	6,263,637	0.0005732	46,710
076	CITY OF SEABROOK	2015	1,129,502,882	0.613	6,919,459	73,618	6,845,841	0.0006264	51,052
077	CITY OF SHOREACRES	2015	111,270,634	0.766	851,782	0	851,782	0.0000779	6,352
078	CITY OF SOUTH HOUSTON	2015	585,294,777	0.700	4,094,365	28,486	4,065,879	0.0003720	30,321
079	CITY OF SOUTHSIDE PLACE	2015	687,990,092	0.324	2,229,088	0	2,229,088	0.0002040	16,623
080	CITY OF SPRING VALLEY	2015	1,086,716,989	0.450	4,890,226	0	4,890,226	0.0004475	36,468
082	CITY OF TAYLOR LAKE VILLAGE	2015	419,762,320	0.307	1,290,349	0	1,290,349	0.0001181	9,623
083	CITY OF TOMBALL	2015	1,731,563,601	0.341	5,912,510	0	5,912,510	0.0005410	44,092
084	CITY OF WEBSTER	2015	1,913,213,179	0.234	4,485,911	4,686	4,481,225	0.0004101	33,418
085	CITY OF WEST UNIVERSITY PLACE	2015	5,860,063,929	0.332	19,443,106	0	19,443,106	0.0017791	144,994
086	CITY OF WALLER	2015	88,689,061	0.521	462,159	0	462,159	0.0000423	3,446
<u>SPECIAL DISTRICTS</u>									
100	HARRIS COUNTY MUD 421	2015	13,653,302	1.250	170,666	0	170,666	0.0000156	1,273
101	ADDICKS UD	2015	273,097,948	0.655	1,788,792	0	1,788,792	0.0001637	13,340
105	HARRIS COUNTY MUD 264	2015	238,251,331	0.360	857,705	0	857,705	0.0000785	6,396
106	HARRIS COUNTY MUD 502	2015	21,959,220	1.500	329,388	0	329,388	0.0000301	2,456
108	HARRIS COUNTY MUD 255	2015	203,486,250	0.270	549,413	0	549,413	0.0000503	4,097
110	BAKER ROAD MUD	2015	272,410,102	0.340	926,194	0	926,194	0.0000848	6,907
111	BAMMEL UD	2015	145,466,733	0.400	581,867	0	581,867	0.0000532	4,339
112	BARKER CYPRESS MUD	2015	309,577,429	0.890	2,755,239	0	2,755,239	0.0002521	20,547
115	HARRIS COUNTY MUD 499	2015	21,905,091	0.889	194,736	0	194,736	0.0000178	1,452
116	BEECHNUT MUD	2015	61,504,148	0.720	442,830	0	442,830	0.0000405	3,302

ESTIMATED 2017 COST ALLOCATION TO TAXING UNITS

Jur No.	Taxing Unit	Tax Year	Taxable Value as of 10/7/2016	Tax Rate	Total Levy	Frozen Levy Loss	Adjusted Levy	Allocation Ratio	2017 Budget Allocation
117	BILMA PUD	2015	454,574,062	0.560	2,545,615	0	2,545,615	0.0002329	18,983
118	BISSONNET MUD	2015	331,715,095	0.570	1,890,776	0	1,890,776	0.0001730	14,100
120	WEST RANCH MANAGEMENT DISTRICT	2015	0	0.650	0	0	0	0.0000000	0
121	BRIDGESTONE MUD	2015	1,363,816,881	0.600	8,182,901	0	8,182,901	0.0007488	61,023
124	BAYBROOK MUD	2015	264,236,703	1.110	2,933,027	0	2,933,027	0.0002684	21,873
125	THE WOODLANDS TOWNSHIP	2015	2,390,087,206	0.230	5,497,201	0	5,497,201	0.0005030	40,994
128	HARRIS COUNTY MUD 250	2015	52,654,963	1.230	647,656	0	647,656	0.0000593	4,830
129	HARRIS COUNTY MUD 276	2015	383,338,330	0.680	2,606,701	0	2,606,701	0.0002385	19,439
131	CNP UTILITY DISTRICT	2015	550,628,717	0.300	1,651,886	0	1,651,886	0.0001512	12,319
134	CASTLEWOOD MUD	2015	259,794,656	0.580	1,506,809	0	1,506,809	0.0001379	11,237
135	CEDAR BAYOU PARK UD	2015	30,029,360	0.093	27,837	0	27,837	0.0000025	208
136	CHARTERWOOD MUD	2015	394,786,143	0.440	1,737,059	0	1,737,059	0.0001590	12,954
137	CHELFORD CITY MUD	2015	122,175,836	0.425	519,247	0	519,247	0.0000475	3,872
138	CHELFORD ONE MUD	2015	180,929,115	0.535	967,971	0	967,971	0.0000886	7,218
139	CHIMNEY HILL MUD	2015	341,711,281	0.790	2,699,519	0	2,699,519	0.0002470	20,131
140	CIMARRON MUD	2015	774,483,905	0.420	3,252,832	0	3,252,832	0.0002977	24,257
141	CLAY ROAD MUD	2015	161,635,722	0.780	1,260,759	0	1,260,759	0.0001154	9,402
142	CLEAR LAKE CITY WATER AUTHORITY	2015	5,236,208,327	0.270	14,137,762	0	14,137,762	0.0012937	105,430
145	CORNERSTONE MUD	2015	355,253,208	0.330	1,172,336	0	1,172,336	0.0001073	8,742
146	CROSBY MUD	2015	255,261,209	0.550	1,403,937	0	1,403,937	0.0001285	10,470
147	CY - CHAMP PUD	2015	568,954,803	0.370	2,105,133	0	2,105,133	0.0001926	15,699
148	CYPRESS CREEK UD	2015	185,727,204	0.180	334,309	0	334,309	0.0000306	2,493
149	CYPRESS FOREST PUD	2015	681,171,258	0.293	1,995,832	0	1,995,832	0.0001826	14,884
150	CYPRESS HILL MUD 1	2015	755,601,160	0.790	5,969,249	0	5,969,249	0.0005462	44,515
151	CYPRESS KLEIN UD	2015	258,039,212	0.170	438,667	0	438,667	0.0000401	3,271
152	CYPRESSWOOD UD	2015	153,430,319	0.350	537,006	0	537,006	0.0000491	4,005
153	CAMFIELD MUD	2015	15,909,941	0.500	79,550	0	79,550	0.0000073	593
154	LOWER KIRBY PEARLAND MGMT DISTRICT	2015	162,628,577	0.700	1,138,400	0	1,138,400	0.0001042	8,489
156	HARRIS COUNTY MUD 278	2015	382,586,912	1.050	4,017,163	0	4,017,163	0.0003676	29,957
159	HARRIS COUNTY MUD 290	2015	721,271,468	0.890	6,419,316	0	6,419,316	0.0005874	47,871
161	MEADOWHILL REGIONAL MUD	2015	375,100,757	0.790	2,963,296	0	2,963,296	0.0002712	22,098
162	DOWDELL PUD	2015	334,956,437	0.900	3,014,608	0	3,014,608	0.0002759	22,481
163	EL DORADO UD	2015	104,474,353	0.510	532,819	0	532,819	0.0000488	3,973
164	EMERALD FOREST UD	2015	326,010,462	0.660	2,151,669	0	2,151,669	0.0001969	16,046
165	ENCANTO REAL UD	2015	230,178,679	0.988	2,273,014	0	2,273,014	0.0002080	16,951
170	HARRIS COUNTY MUD 286	2015	649,941,633	0.130	844,924	0	844,924	0.0000773	6,301
171	FALLBROOK UD	2015	213,951,157	0.320	684,644	0	684,644	0.0000626	5,106
172	FAULKY GULLY MUD	2015	594,464,921	0.420	2,496,753	0	2,496,753	0.0002285	18,619
174	FOREST HILLS MUD	2015	85,874,879	1.200	1,030,499	0	1,030,499	0.0000943	7,685
175	FOUNTAINHEAD MUD	2015	253,066,840	0.630	1,594,321	0	1,594,321	0.0001459	11,889
176	FRY ROAD MUD	2015	265,519,033	0.470	1,247,939	0	1,247,939	0.0001142	9,306

ESTIMATED 2017 COST ALLOCATION TO TAXING UNITS

Jur No.	Taxing Unit	Tax Year	Taxable Value as of 10/7/2016	Tax Rate	Total Levy	Frozen Levy Loss	Adjusted Levy	Allocation Ratio	2017 Budget Allocation
177	HARRIS COUNTY MUD 415	2015	31,638,329	0.800	253,107	0	253,107	0.0000232	1,888
178	HARRIS COUNTY ID 18	2015	1,707,607,931	1.500	25,614,119	0	25,614,119	0.0023438	191,013
179	HARRIS COUNTY MUD 304	2015	216,341,243	0.810	1,752,364	0	1,752,364	0.0001604	13,068
180	HARRIS COUNTY MUD 275	2015	77,110,827	0.900	693,997	0	693,997	0.0000635	5,175
182	GRANT ROAD PUD	2015	292,575,834	0.585	1,711,569	0	1,711,569	0.0001566	12,764
183	GREENWOOD UD	2015	129,745,752	0.900	1,167,712	0	1,167,712	0.0001069	8,708
185	GREENS TRAIL MUD	2015	286,354,423	0.190	544,073	0	544,073	0.0000498	4,057
186	GREENS PARKWAY MUD	2015	708,537,703	0.430	3,046,712	0	3,046,712	0.0002788	22,720
187	HARRIS COUNTY MUD 287	2015	227,467,575	1.350	3,070,812	0	3,070,812	0.0002810	22,900
189	HARRIS COUNTY MUD 489	2015	2,500	1.000	25	0	25	0.0000000	0
190	HARRIS COUNTY MUD 284	2015	178,920,947	0.940	1,681,857	0	1,681,857	0.0001539	12,542
193	HARRIS COUNTY MUD 285	2015	646,235,525	0.810	5,234,508	0	5,234,508	0.0004790	39,035
197	HARRIS COUNTY MUD 401	2015	272,725,324	1.130	3,081,796	0	3,081,796	0.0002820	22,982
200	HARRIS COUNTY FWSD 1A	2015	52,069,781	0.550	286,384	0	286,384	0.0000262	2,136
205	HARRIS COUNTY MUD 321	2015	187,994,532	1.050	1,973,943	0	1,973,943	0.0001806	14,720
206	HARRIS COUNTY FWSD 6	2015	645,983,427	0.230	1,485,762	0	1,485,762	0.0001360	11,080
207	HARRIS COUNTY MUD 282	2015	243,446,444	0.960	2,337,086	0	2,337,086	0.0002139	17,428
208	HARRIS COUNTY MUD 316	2015	112,450,583	0.530	595,988	0	595,988	0.0000545	4,444
213	HARRIS COUNTY MUD 322	2015	301,416,249	0.570	1,718,073	0	1,718,073	0.0001572	12,812
220	HARRIS COUNTY MUD 342	2015	263,695,306	0.840	2,215,041	0	2,215,041	0.0002027	16,518
222	HARRIS COUNTY MUD 344	2015	389,986,231	0.950	3,704,869	0	3,704,869	0.0003390	27,628
224	HARRIS COUNTY MUD 345	2015	569,755,824	0.310	1,766,243	0	1,766,243	0.0001616	13,171
225	HARRIS COUNTY MUD 346	2015	143,134,918	0.100	143,135	0	143,135	0.0000131	1,067
227	HARRIS COUNTY FWSD 27	2015	60,576,935	0.665	402,837	0	402,837	0.0000369	3,004
228	HARRIS COUNTY MUD 404	2015	67,260,169	0.861	579,278	0	579,278	0.0000530	4,320
229	HARRIS COUNTY MUD 412	2015	322,007,060	0.975	3,139,569	0	3,139,569	0.0002873	23,413
230	HARRIS COUNTY MUD 407	2015	131,090,002	0.610	799,649	0	799,649	0.0000732	5,963
231	HARRIS COUNTY MUD 405	2015	29,484,722	1.300	383,301	0	383,301	0.0000351	2,858
232	HARRIS COUNTY MUD 433	2015	323,920,922	1.200	3,887,051	0	3,887,051	0.0003557	28,987
234	HARRIS COUNTY MUD 451	2015	60,935,844	0.899	547,740	0	547,740	0.0000501	4,085
235	HARRIS COUNTY MUD 459	2015	40,222,284	0.800	321,778	0	321,778	0.0000294	2,400
236	HARRIS COUNTY MUD 416	2015	53,889,583	0.650	350,282	0	350,282	0.0000321	2,612
237	HARRIS COUNTY MUD 434	2015	85,041,450	1.250	1,063,018	0	1,063,018	0.0000973	7,927
238	HARRIS COUNTY MUD 439	2015	13,441,970	0.800	107,536	0	107,536	0.0000098	802
241	HARRIS COUNTY MUD 460	2015	58,108,993	0.740	430,007	0	430,007	0.0000393	3,207
242	HARRIS COUNTY MUD 450	2015	179,864,501	0.799	1,436,902	0	1,436,902	0.0001315	10,715
243	HARRIS COUNTY MUD 480	2015	59,113,569	1.480	874,881	0	874,881	0.0000801	6,524
246	HARRIS COUNTY MUD 432	2015	128,839,089	1.450	1,868,167	0	1,868,167	0.0001709	13,932
247	HARRIS COUNTY FWSD 47	2015	107,663,278	0.960	1,033,567	0	1,033,567	0.0000946	7,708
248	HARRIS COUNTY MUD 481	2015	96,834,384	1.200	1,162,013	0	1,162,013	0.0001063	8,666
249	HARRIS COUNTY MUD 406	2015	221,459,927	1.050	2,325,329	0	2,325,329	0.0002128	17,341

ESTIMATED 2017 COST ALLOCATION TO TAXING UNITS

Jur No.	Taxing Unit	Tax Year	Taxable Value as of 10/7/2016	Tax Rate	Total Levy	Frozen Levy Loss	Adjusted Levy	Allocation Ratio	2017 Budget Allocation
251	HARRIS COUNTY FWSD 51	2015	481,302,841	0.282	1,357,274	0	1,357,274	0.0001242	10,122
253	BRAZORIA COUNTY MUD 18	2015	218,409,667	0.390	851,798	0	851,798	0.0000779	6,352
254	KINGS MANOR MUD	2015	67,898,970	0.740	502,452	0	502,452	0.0000460	3,747
255	HARRIS COUNTY MUD 501	2015	457,248,369	1.450	6,630,101	0	6,630,101	0.0006067	49,443
256	HARRIS-BRAZORIA CO MUD 509	2015	41,975,199	0.820	344,197	0	344,197	0.0000315	2,567
257	HARRIS COUNTY MUD 500	2015	109,494,053	1.250	1,368,676	0	1,368,676	0.0001252	10,207
258	HARRIS COUNTY FWSD 58	2015	111,882,291	0.620	693,670	0	693,670	0.0000635	5,173
261	HARRIS COUNTY FWSD 61	2015	988,160,295	0.330	3,260,929	0	3,260,929	0.0002984	24,318
264	HARRIS COUNTY ID 1	2015	6,520,816,219	0.143	9,354,111	0	9,354,111	0.0008560	69,757
276	HARRIS COUNTY MUD 396	2015	356,028,369	0.890	3,168,652	0	3,168,652	0.0002899	23,630
301	HARRIS COUNTY MUD 1	2015	667,777,955	0.920	6,143,557	0	6,143,557	0.0005622	45,815
305	HARRIS COUNTY MUD 5	2015	170,811,355	1.240	2,118,061	0	2,118,061	0.0001938	15,795
306	HARRIS COUNTY MUD 6	2015	144,962,076	0.590	855,276	0	855,276	0.0000783	6,378
308	HARRIS COUNTY MUD 8	2015	151,949,713	0.583	885,107	0	885,107	0.0000810	6,601
311	HARRIS COUNTY MUD 11	2015	149,684,978	0.860	1,287,291	0	1,287,291	0.0001178	9,600
313	CLEAR BROOK CITY MUD	2015	857,990,658	0.670	5,748,537	0	5,748,537	0.0005260	42,869
316	HARRIS COUNTY MUD 16	2015	147,247,421	0.690	1,016,007	0	1,016,007	0.0000930	7,577
318	HARRIS COUNTY MUD 18	2015	278,527,953	0.400	1,114,112	0	1,114,112	0.0001019	8,308
319	HARRIS COUNTY MUD 494	2015	56,868,466	1.500	853,027	0	853,027	0.0000781	6,361
321	HARRIS COUNTY MUD 461	2015	176,848,293	0.600	1,061,090	0	1,061,090	0.0000971	7,913
323	HARRIS COUNTY MUD 23	2015	137,822,352	0.470	647,765	0	647,765	0.0000593	4,831
324	HARRIS COUNTY MUD 24	2015	721,323,278	0.540	3,895,146	0	3,895,146	0.0003564	29,047
325	HARRIS COUNTY MUD 25	2015	67,161,158	0.720	483,560	0	483,560	0.0000442	3,606
326	HARRIS COUNTY MUD 26	2015	642,689,793	0.760	4,884,442	0	4,884,442	0.0004470	36,425
327	HARRIS-WALLER CNTIES MUD 2	2015	41,660,070	0.950	395,771	0	395,771	0.0000362	2,951
331	HARRIS COUNTY MUD 529	2015	70,666,063	0.750	529,995	0	529,995	0.0000485	3,952
332	HARRIS COUNTY MUD 449	2015	108,752,782	1.500	1,631,292	0	1,631,292	0.0001493	12,165
333	HARRIS COUNTY MUD 33	2015	178,429,830	0.900	1,605,868	0	1,605,868	0.0001469	11,975
334	HARRIS COUNTY WCID 159	2015	1,263,570	0.500	6,318	0	6,318	0.0000006	47
336	HARRIS COUNTY MUD 36	2015	564,532,891	0.250	1,411,332	0	1,411,332	0.0001291	10,525
337	HARRIS COUNTY MUD 504	2015	52,295,228	1.390	726,904	0	726,904	0.0000665	5,421
338	HARRIS COUNTY ID 12	2015	9,561,214	0.550	52,587	0	52,587	0.0000048	392
339	HARRIS COUNTY MUD 530	2015	35,866,354	1.250	448,329	0	448,329	0.0000410	3,343
340	HARRIS COUNTY MUD 531	2015	17,915,809	1.350	241,863	0	241,863	0.0000221	1,804
341	PEARLAND MUNICIPAL MGMT DIST 2	2015	11,969,543	0.100	11,970	0	11,970	0.0000011	89
342	HARRIS COUNTY MUD 422	2015	358,962	1.500	5,384	0	5,384	0.0000005	40
343	HARRIS COUNTY MUD 43	2015	165,856,102	0.500	829,281	0	829,281	0.0000759	6,184
344	HARRIS COUNTY MUD 44	2015	146,609,410	0.410	601,099	0	601,099	0.0000550	4,483
346	HARRIS COUNTY MUD 46	2015	212,419,732	0.540	1,147,067	0	1,147,067	0.0001050	8,554
347	NORTHAMPTON MUD (DA)	2015	63,314,907	0.640	405,215	0	405,215	0.0000371	3,022
348	HARRIS COUNTY MUD 48	2015	33,633,728	0.483	162,451	0	162,451	0.0000149	1,211

ESTIMATED 2017 COST ALLOCATION TO TAXING UNITS

Jur No.	Taxing Unit	Tax Year	Taxable Value as of 10/7/2016	Tax Rate	Total Levy	Frozen Levy Loss	Adjusted Levy	Allocation Ratio	2017 Budget Allocation
349	HARRIS COUNTY MUD 49	2015	357,177,807	0.925	3,303,895	0	3,303,895	0.0003023	24,638
350	HARRIS COUNTY MUD 50	2015	61,192,379	1.120	685,355	0	685,355	0.0000627	5,111
351	HARRIS COUNTY WCID 161	2015	31,438,060	0.850	267,224	0	267,224	0.0000245	1,993
353	HARRIS COUNTY MUD 53	2015	701,948,246	0.740	5,194,417	0	5,194,417	0.0004753	38,736
354	HARRIS-WALLER CNTIES MUD 3	2015	0	0.930	0	0	0	0.0000000	0
355	HARRIS COUNTY MUD 55	2015	804,826,218	0.400	3,219,305	0	3,219,305	0.0002946	24,007
356	HARRIS COUNTY MUD 495	2015	2,535,183	1.500	38,028	0	38,028	0.0000035	284
357	INTERCONTINENTAL MUD	2015	90,002	1.250	1,125	0	1,125	0.0000001	8
358	HARRIS COUNTY MUD 58	2015	74,382,548	0.850	632,252	0	632,252	0.0000579	4,715
359	HARRIS COUNTY MUD 537	2015	34,570,461	0.500	172,852	0	172,852	0.0000158	1,289
360	HARRIS COUNTY MUD 319	2015	36,687	1.500	550	0	550	0.0000001	4
361	HARRIS COUNTY MUD 61	2015	324,412,297	0.500	1,622,061	0	1,622,061	0.0001484	12,096
362	HARRIS COUNTY MUD 62	2015	154,361,189	0.590	910,731	0	910,731	0.0000833	6,792
363	HARRIS COUNTY MUD 63	2015	311,748,357	0.500	1,558,742	0	1,558,742	0.0001426	11,624
364	HARRIS COUNTY MUD 64	2015	274,831,182	0.690	1,896,335	0	1,896,335	0.0001735	14,142
365	HARRIS COUNTY MUD 65	2015	326,527,150	0.840	2,742,828	0	2,742,828	0.0002510	20,454
366	GENERATION PARK MGMT DIST	2015	305,937,181	1.250	3,824,215	0	3,824,215	0.0003499	28,518
368	HARRIS COUNTY ID 015	2015	52,106,034	1.250	651,325	0	651,325	0.0000596	4,857
369	HARRIS COUNTY MUD 69	2015	162,320,352	0.400	649,281	0	649,281	0.0000594	4,842
370	HARRIS COUNTY MUD 70	2015	339,007,042	0.730	2,474,751	0	2,474,751	0.0002265	18,455
371	HARRIS COUNTY MUD 71	2015	652,585,492	0.970	6,330,079	0	6,330,079	0.0005792	47,205
375	HARRIS COUNTY MUD 213B	2015	3,561,711	0.800	28,494	0	28,494	0.0000026	212
376	HARRIS COUNTY MUD 457	2015	229,819	1.500	3,447	0	3,447	0.0000003	26
379	HARRIS COUNTY MUD 381	2015	133,642,946	0.700	935,501	0	935,501	0.0000856	6,976
381	HARRIS COUNTY MUD 81	2015	553,252,280	0.330	1,825,733	0	1,825,733	0.0001671	13,615
382	HARRIS COUNTY MUD 82	2015	457,464,061	0.700	3,202,248	0	3,202,248	0.0002930	23,880
383	HARRIS COUNTY MUD 383	2015	439,737,226	0.840	3,693,793	0	3,693,793	0.0003380	27,546
384	HARRIS COUNTY MUD 397	2015	318,327,221	0.760	2,419,287	0	2,419,287	0.0002214	18,041
385	HARRIS COUNTY MUD 399	2015	82,744,368	1.090	901,914	0	901,914	0.0000825	6,726
386	HARRIS COUNTY MUD 86	2015	218,720,871	0.700	1,531,046	0	1,531,046	0.0001401	11,418
387	HARRIS COUNTY MUD 391	2015	507,245,240	1.140	5,782,596	0	5,782,596	0.0005291	43,123
388	HARRIS COUNTY MUD 393	2015	135,062,374	0.860	1,161,536	0	1,161,536	0.0001063	8,662
389	HARRIS COUNTY MUD 400	2015	424,460,268	1.010	4,287,049	0	4,287,049	0.0003923	31,970
392	HARRIS COUNTY MUD 411	2015	81,186,576	0.800	649,493	0	649,493	0.0000594	4,843
394	HARRIS COUNTY MUD 410	2015	190,550,369	0.630	1,200,467	0	1,200,467	0.0001098	8,952
395	HARRIS MONTGMRY CO MUD 386	2015	2,396,810,374	0.465	11,145,168	0	11,145,168	0.0010198	83,113
396	HARRIS COUNTY MUD 96	2015	255,455,940	1.160	2,963,289	0	2,963,289	0.0002712	22,098
399	HARRIS COUNTY MUD 420	2015	65,424,972	1.290	843,982	0	843,982	0.0000772	6,294
400	HARRIS COUNTY RID 1	2015	96,866,356	0.300	290,599	0	290,599	0.0000266	2,167
402	HARRIS COUNTY MUD 102	2015	443,350,196	0.690	3,059,116	0	3,059,116	0.0002799	22,813
404	HARRIS COUNTY MUD 104	2015	294,915,922	0.480	1,415,596	0	1,415,596	0.0001295	10,557

ESTIMATED 2017 COST ALLOCATION TO TAXING UNITS

Jur No.	Taxing Unit	Tax Year	Taxable Value as of 10/7/2016	Tax Rate	Total Levy	Frozen Levy Loss	Adjusted Levy	Allocation Ratio	2017 Budget Allocation
405	HARRIS COUNTY MUD 105	2015	348,792,990	0.850	2,964,740	0	2,964,740	0.0002713	22,109
406	HARRIS COUNTY MUD 106	2015	308,187,638	0.880	2,712,051	0	2,712,051	0.0002482	20,225
409	HARRIS COUNTY MUD 109	2015	527,151,105	0.520	2,741,186	0	2,741,186	0.0002508	20,442
418	HARRIS COUNTY MUD 118	2015	213,720,064	0.640	1,367,808	0	1,367,808	0.0001252	10,200
419	HARRIS COUNTY MUD 119	2015	187,814,322	0.485	910,899	0	910,899	0.0000834	6,793
420	HARRIS COUNTY MUD 120	2015	444,834,512	0.580	2,580,040	0	2,580,040	0.0002361	19,240
422	HARRIS COUNTY MUD 122	2015	80,044,489	0.700	560,311	0	560,311	0.0000513	4,178
427	HARRIS COUNTY MUD 127	2015	224,150,823	0.780	1,748,376	0	1,748,376	0.0001600	13,038
430	HARRIS COUNTY MUD 130	2015	523,652,064	0.580	3,037,182	0	3,037,182	0.0002779	22,649
432	HARRIS COUNTY MUD 132	2015	598,989,855	0.102	613,366	0	613,366	0.0000561	4,574
436	HARRIS COUNTY MUD 136	2015	242,044,909	0.178	430,840	0	430,840	0.0000394	3,213
444	HARRIS COUNTY MUD 144	2015	140,575,410	0.615	864,539	0	864,539	0.0000791	6,447
447	HARRIS COUNTY MUD 147	2015	103,586,868	0.890	921,923	0	921,923	0.0000844	6,875
448	HARRIS COUNTY MUD 148	2015	127,429,071	1.030	1,312,519	0	1,312,519	0.0001201	9,788
449	HARRIS COUNTY MUD 149	2015	164,380,630	0.480	789,027	0	789,027	0.0000722	5,884
450	HARRIS COUNTY MUD 150	2015	233,478,756	0.840	1,961,222	0	1,961,222	0.0001795	14,625
451	HARRIS COUNTY MUD 151	2015	490,945,716	0.390	1,914,688	0	1,914,688	0.0001752	14,278
452	HARRIS COUNTY MUD 152	2015	494,821,692	0.340	1,682,394	0	1,682,394	0.0001539	12,546
453	HARRIS COUNTY MUD 153	2015	586,512,283	0.451	2,645,170	0	2,645,170	0.0002420	19,726
454	HARRIS COUNTY MUD 154	2015	305,418,306	0.780	2,382,263	0	2,382,263	0.0002180	17,765
455	HARRIS COUNTY MUD 155	2015	129,086,911	0.930	1,200,508	0	1,200,508	0.0001099	8,953
456	HARRIS COUNTY MUD 156	2015	223,478,958	0.870	1,944,267	0	1,944,267	0.0001779	14,499
457	HARRIS COUNTY MUD 157	2015	558,418,480	0.730	4,076,455	0	4,076,455	0.0003730	30,399
458	HARRIS COUNTY MUD 158	2015	341,934,181	0.550	1,880,638	0	1,880,638	0.0001721	14,025
462	HARRIS COUNTY MUD 162	2015	165,903,443	0.500	829,517	0	829,517	0.0000759	6,186
463	HARRIS COUNTY MUD 163	2015	299,056,786	0.097	290,085	0	290,085	0.0000265	2,163
465	HARRIS COUNTY MUD 165	2015	1,161,817,516	1.200	13,941,810	0	13,941,810	0.0012757	103,969
466	HARRIS COUNTY MUD 166	2015	162,876,764	0.870	1,417,028	0	1,417,028	0.0001297	10,567
467	HARRIS COUNTY MUD 167	2015	586,156,694	1.140	6,682,186	0	6,682,186	0.0006115	49,831
468	HARRIS COUNTY MUD 168	2015	460,067,865	0.530	2,438,360	0	2,438,360	0.0002231	18,184
470	HARRIS COUNTY MUD 170	2015	158,769,908	0.270	428,679	0	428,679	0.0000392	3,197
472	HARRIS COUNTY MUD 172	2015	335,410,357	0.780	2,616,201	0	2,616,201	0.0002394	19,510
473	HARRIS COUNTY MUD 173	2015	347,267,189	0.570	1,979,423	0	1,979,423	0.0001811	14,761
479	HARRIS COUNTY MUD 179	2015	186,906,723	0.280	523,339	0	523,339	0.0000479	3,903
480	HARRIS COUNTY MUD 180	2015	196,720,928	0.795	1,563,931	0	1,563,931	0.0001431	11,663
482	HARRIS COUNTY MUD 182	2015	88,760,557	0.400	355,042	0	355,042	0.0000325	2,648
483	HARRIS COUNTY MUD 183	2015	199,671,353	0.510	1,018,324	0	1,018,324	0.0000932	7,594
484	HARRIS COUNTY MUD 382	2015	169,818,708	0.630	1,069,858	0	1,069,858	0.0000979	7,978
485	HARRIS COUNTY MUD 185	2015	91,253,794	0.545	497,333	0	497,333	0.0000455	3,709
486	HARRIS COUNTY MUD 186	2015	288,321,684	0.240	691,972	0	691,972	0.0000633	5,160
488	HARRIS COUNTY MUD 188	2015	405,032,048	0.440	1,782,141	0	1,782,141	0.0001631	13,290

ESTIMATED 2017 COST ALLOCATION TO TAXING UNITS

Jur No.	Taxing Unit	Tax Year	Taxable Value as of 10/7/2016	Tax Rate	Total Levy	Frozen Levy Loss	Adjusted Levy	Allocation Ratio	2017 Budget Allocation
489	HARRIS COUNTY MUD 189	2015	217,906,602	0.490	1,067,742	0	1,067,742	0.0000977	7,963
490	HARRIS COUNTY MUD 390	2015	284,284,634	0.700	1,989,992	0	1,989,992	0.0001821	14,840
491	HARRIS COUNTY MUD 191	2015	350,589,182	0.245	858,943	0	858,943	0.0000786	6,405
493	HARRIS COUNTY MUD 389	2015	155,663,881	1.150	1,790,135	0	1,790,135	0.0001638	13,350
496	HARRIS COUNTY MUD 196	2015	409,101,579	0.640	2,618,250	0	2,618,250	0.0002396	19,525
500	HARRIS COUNTY MUD 200	2015	262,658,386	0.620	1,628,482	0	1,628,482	0.0001490	12,144
501	HARRIS COUNTY MUD 374	2015	436,876,867	0.920	4,019,267	0	4,019,267	0.0003678	29,973
502	HARRIS COUNTY MUD 202	2015	143,430,661	1.250	1,792,883	0	1,792,883	0.0001641	13,370
504	HARRIS COUNTY MUD 371	2015	298,544,111	0.880	2,627,188	0	2,627,188	0.0002404	19,592
505	HARRIS COUNTY MUD 205	2015	61,432,981	0.350	215,015	0	215,015	0.0000197	1,603
506	HARRIS COUNTY MUD 419	2015	893,656,557	0.970	8,668,469	0	8,668,469	0.0007932	64,644
507	HARRIS COUNTY MUD 468	2015	552,999,194	0.740	4,092,194	0	4,092,194	0.0003745	30,517
508	HARRIS COUNTY MUD 208	2015	230,836,545	0.440	1,015,681	0	1,015,681	0.0000929	7,574
509	HARRIS COUNTY MUD 372	2015	840,995,784	0.165	1,387,643	0	1,387,643	0.0001270	10,348
510	HARRIS COUNTY MUD 373	2015	159,754,238	0.335	535,177	0	535,177	0.0000490	3,991
511	HARRIS COUNTY MUD 211	2015	78,603,885	0.570	448,042	0	448,042	0.0000410	3,341
514	HARRIS COUNTY MUD 220	2015	169,218,186	1.050	1,776,791	0	1,776,791	0.0001626	13,250
515	HARRIS COUNTY MUD 215	2015	55,983,152	0.500	279,916	0	279,916	0.0000256	2,087
516	HARRIS COUNTY MUD 216	2015	221,792,109	0.700	1,552,545	0	1,552,545	0.0001421	11,578
517	HARRIS COUNTY MUD 217	2015	88,722,009	1.340	1,188,875	0	1,188,875	0.0001088	8,866
519	HARRIS COUNTY MUD 341	2015	356,190,911	0.370	1,317,906	0	1,317,906	0.0001206	9,828
520	HARRIS COUNTY MUD 370	2015	710,169,622	0.345	2,450,085	0	2,450,085	0.0002242	18,271
521	HARRIS COUNTY MUD 221	2015	287,615,043	0.470	1,351,791	0	1,351,791	0.0001237	10,081
522	HARRIS COUNTY MUD 222	2015	361,866,382	0.370	1,338,906	0	1,338,906	0.0001225	9,985
524	HARRIS COUNTY MUD 354	2015	539,446,126	0.545	2,939,981	0	2,939,981	0.0002690	21,924
525	HARRIS COUNTY MUD 355	2015	749,741,961	0.100	749,742	0	749,742	0.0000686	5,591
526	HARRIS COUNTY MUD 367	2015	624,131,797	0.670	4,181,683	0	4,181,683	0.0003826	31,184
527	HARRIS COUNTY MUD 359	2015	291,467,110	0.260	757,814	0	757,814	0.0000693	5,651
528	HARRIS COUNTY MUD 358	2015	320,852,640	0.805	2,582,864	0	2,582,864	0.0002363	19,261
529	HARRIS COUNTY MUD 360	2015	458,847,083	0.380	1,743,619	0	1,743,619	0.0001596	13,003
530	HARRIS COUNTY MUD 230	2015	485,754,134	0.520	2,525,921	0	2,525,921	0.0002311	18,837
532	HARRIS COUNTY MUD 361	2015	295,310,846	0.950	2,805,453	0	2,805,453	0.0002567	20,921
533	HARRIS COUNTY MUD 233	2015	130,519,455	0.790	1,031,104	0	1,031,104	0.0000944	7,689
534	HARRIS COUNTY MUD 364	2015	552,694,702	0.455	2,514,761	0	2,514,761	0.0002301	18,753
535	HARRIS COUNTY MUD 365	2015	509,447,446	0.485	2,470,820	0	2,470,820	0.0002261	18,426
538	HARRIS COUNTY MUD 238	2015	434,398,337	0.620	2,693,270	0	2,693,270	0.0002464	20,085
539	HARRIS COUNTY MUD 239	2015	276,557,405	0.690	1,908,246	0	1,908,246	0.0001746	14,230
541	HARRIS COUNTY MUD 257	2015	202,430,552	0.550	1,113,368	0	1,113,368	0.0001019	8,303
542	HARRIS COUNTY MUD 261	2015	134,661,300	0.520	700,239	0	700,239	0.0000641	5,222
544	HARRIS COUNTY MUD 280	2015	208,823,851	0.610	1,273,825	0	1,273,825	0.0001166	9,499
545	HARRIS COUNTY MUD 281	2015	276,946,992	0.640	1,772,461	0	1,772,461	0.0001622	13,218

ESTIMATED 2017 COST ALLOCATION TO TAXING UNITS

Jur No.	Taxing Unit	Tax Year	Taxable Value as of 10/7/2016	Tax Rate	Total Levy	Frozen Levy Loss	Adjusted Levy	Allocation Ratio	2017 Budget Allocation
548	HARRIS COUNTY MUD 248	2015	429,295,897	0.550	2,361,127	0	2,361,127	0.0002161	17,608
549	HARRIS COUNTY MUD 249	2015	268,847,683	0.840	2,258,321	0	2,258,321	0.0002066	16,841
550	HARRIS COUNTY ESD 7	2015	10,925,679,299	0.065	7,150,857	0	7,150,857	0.0006543	53,326
555	HARRIS COUNTY MUD 366	2015	252,436,229	0.200	504,872	0	504,872	0.0000462	3,765
556	HARRIS COUNTY UD 6	2015	420,300,221	0.230	966,691	0	966,691	0.0000885	7,209
564	HARRIS COUNTY UD 14	2015	301,181,440	0.600	1,807,089	0	1,807,089	0.0001654	13,476
565	HARRIS COUNTY UD 15	2015	230,069,412	0.815	1,875,066	0	1,875,066	0.0001716	13,983
566	HARRIS COUNTY UD 16	2015	206,537,897	1.100	2,271,917	0	2,271,917	0.0002079	16,942
600	HARRIS COUNTY WCID-FONDREN ROAD	2015	85,758,814	0.600	514,553	0	514,553	0.0000471	3,837
601	HARRIS COUNTY WCID 1	2015	249,516,149	0.220	548,936	0	548,936	0.0000502	4,094
602	HARRIS COUNTY WCID 21	2015	389,128,062	0.366	1,424,209	0	1,424,209	0.0001303	10,621
603	HARRIS COUNTY WCID 36	2015	313,517,963	0.350	1,097,313	0	1,097,313	0.0001004	8,183
604	HARRIS COUNTY WCID 50	2015	252,532,362	0.335	845,983	0	845,983	0.0000774	6,309
605	HARRIS COUNTY WCID 70	2015	100,890,439	0.620	625,521	0	625,521	0.0000572	4,665
606	HARRIS COUNTY WCID 74	2015	115,364,232	1.000	1,153,642	0	1,153,642	0.0001056	8,603
609	HARRIS COUNTY WCID 84	2015	236,190,754	0.810	1,913,145	0	1,913,145	0.0001751	14,267
610	HARRIS COUNTY WCID 89	2015	411,882,801	1.200	4,942,594	0	4,942,594	0.0004523	36,859
611	HARRIS COUNTY WCID 91	2015	129,617,340	0.360	466,622	0	466,622	0.0000427	3,480
612	HARRIS COUNTY WCID 92	2015	202,704,295	0.150	304,056	0	304,056	0.0000278	2,267
613	HARRIS COUNTY WCID 96	2015	864,784,699	0.860	7,437,148	0	7,437,148	0.0006805	55,461
614	HARRIS COUNTY WCID 155	2015	1,410,247,044	0.160	2,256,395	0	2,256,395	0.0002065	16,827
616	HARRIS COUNTY WCID 156	2015	175,159,052	0.360	630,573	0	630,573	0.0000577	4,702
617	HARRIS COUNTY WCID 157	2015	926,264,677	0.480	4,446,070	0	4,446,070	0.0004068	33,156
622	HARRIS COUNTY WCID 109	2015	544,935,652	0.250	1,362,339	0	1,362,339	0.0001247	10,159
623	HARRIS COUNTY WCID 110	2015	833,185,606	0.440	3,666,017	0	3,666,017	0.0003355	27,339
624	HARRIS COUNTY WCID 113	2015	77,451,401	0.740	573,140	0	573,140	0.0000524	4,274
625	HARRIS COUNTY WCID 114	2015	449,717,272	0.250	1,124,293	0	1,124,293	0.0001029	8,384
626	HARRIS COUNTY WCID 116	2015	307,534,182	0.100	307,534	0	307,534	0.0000281	2,293
627	HARRIS COUNTY WCID 119	2015	532,044,281	0.520	2,766,630	0	2,766,630	0.0002532	20,632
628	HARRIS COUNTY WCID 132	2015	139,660,194	0.470	656,403	0	656,403	0.0000601	4,895
629	HARRIS COUNTY WCID 133	2015	143,217,869	0.940	1,346,248	0	1,346,248	0.0001232	10,039
630	HARRIS COUNTY WCID 136	2015	88,676,314	0.740	656,205	0	656,205	0.0000600	4,894
631	HARRIS COUNTY ESD 46	2015	4,952,412,467	0.080	3,961,930	0	3,961,930	0.0003625	29,545
632	HARRIS COUNTY WCID 145	2015	1,213,531,830	0.057	696,446	0	696,446	0.0000637	5,194
633	HARRIS COUNTY ESD 9	2015	34,863,057,269	0.055	19,174,681	0	19,174,681	0.0017546	142,992
634	HARRIS COUNTY ESD 13	2015	6,831,181,925	0.088	6,029,201	0	6,029,201	0.0005517	44,962
635	HARRIS COUNTY ESD 16	2015	12,612,228,719	0.050	6,306,114	0	6,306,114	0.0005770	47,027
636	HARRIS COUNTY ESD 20	2015	4,088,525,569	0.100	4,088,526	0	4,088,526	0.0003741	30,489
637	HARRIS COUNTY ESD 28	2015	2,914,148,150	0.100	2,914,148	0	2,914,148	0.0002667	21,732
638	HARRIS COUNTY ESD 47	2015	3,219,684,223	0.095	3,064,689	0	3,064,689	0.0002804	22,854
639	HARRIS COUNTY ESD 24	2015	4,734,658,072	0.100	4,734,658	0	4,734,658	0.0004332	35,308

ESTIMATED 2017 COST ALLOCATION TO TAXING UNITS

Jur No.	Taxing Unit	Tax Year	Taxable Value as of 10/7/2016	Tax Rate	Total Levy	Frozen Levy Loss	Adjusted Levy	Allocation Ratio	2017 Budget Allocation
640	HARRIS COUNTY ESD 14	2015	574,132,279	0.050	287,066	0	287,066	0.0000263	2,141
641	HARRIS COUNTY ESD 10	2015	3,354,132,955	0.100	3,354,133	0	3,354,133	0.0003069	25,013
642	HARRIS COUNTY ESD 25	2015	1,417,644,198	0.100	1,417,644	0	1,417,644	0.0001297	10,572
643	HARRIS COUNTY ESD 48	2015	9,988,172,831	0.089	8,889,474	0	8,889,474	0.0008134	66,292
645	HARRIS COUNTY ESD 29	2015	2,789,447,210	0.090	2,519,429	0	2,519,429	0.0002305	18,788
647	HARRIS COUNTY ESD 17	2015	3,677,664,757	0.100	3,677,665	0	3,677,665	0.0003365	27,426
648	HARRIS COUNTY ESD 21	2015	1,607,479,830	0.100	1,607,480	0	1,607,480	0.0001471	11,987
649	HARRIS COUNTY ESD 19	2015	384,036,871	0.030	115,211	0	115,211	0.0000105	859
650	HARRIS-FT BND CNTIES MUD 1	2015	51,410,138	0.655	336,736	0	336,736	0.0000308	2,511
651	HEATHERLOCH MUD	2015	225,263,494	0.390	878,528	0	878,528	0.0000804	6,551
652	HORSEPEN BAYOU MUD	2015	472,945,404	0.550	2,601,200	0	2,601,200	0.0002380	19,398
654	HUNTERS GLEN MUD	2015	285,546,782	0.800	2,284,374	0	2,284,374	0.0002090	17,035
656	INTERSTATE MUD	2015	578,424,934	0.400	2,313,700	0	2,313,700	0.0002117	17,254
657	INVERNESS FOREST ID	2015	128,068,527	0.500	640,343	0	640,343	0.0000586	4,775
658	JACKRABBIT ROAD PUD	2015	259,669,540	0.300	779,009	0	779,009	0.0000713	5,809
660	HARRIS-FT BND CNTIES MUD 3	2015	425,386,595	0.970	4,126,250	0	4,126,250	0.0003776	30,771
662	FORT BEND COUNTY MUD 30	2015	228,563	0.920	2,103	0	2,103	0.0000002	16
664	HARRIS COUNTY ESD 75	2015	795,944,641	0.088	696,452	0	696,452	0.0000637	5,194
665	HARRIS COUNTY ESD 15	2015	966,532,668	0.050	483,266	0	483,266	0.0000442	3,604
666	HARRIS COUNTY ESD 11	2015	43,239,683,448	0.042	18,095,808	0	18,095,808	0.0016559	134,946
667	HARRIS COUNTY ESD 50	2015	4,961,435,614	0.050	2,480,718	0	2,480,718	0.0002270	18,500
668	HARRIS COUNTY ESD 12	2015	2,729,223,645	0.030	818,767	0	818,767	0.0000749	6,106
669	HARRIS COUNTY ESD 80	2015	1,638,288,362	0.042	684,477	0	684,477	0.0000626	5,104
670	HARRIS COUNTY ESD 60	2015	4,698,125,711	0.050	2,349,063	0	2,349,063	0.0002150	17,518
671	HARRIS COUNTY ESD 1	2015	14,174,868,112	0.100	14,174,868	0	14,174,868	0.0012971	105,707
672	HARRIS COUNTY ESD 2	2015	4,636,318,469	0.028	1,298,726	0	1,298,726	0.0001188	9,685
673	HARRIS COUNTY ESD 3	2015	1,632,423,962	0.060	979,454	0	979,454	0.0000896	7,304
674	HARRIS COUNTY ESD 4	2015	904,011,464	0.100	904,011	0	904,011	0.0000827	6,742
675	HARRIS COUNTY ESD 5	2015	1,453,048,471	0.020	290,610	0	290,610	0.0000266	2,167
676	HARRIS COUNTY ESD 6	2015	2,773,361,910	0.009	246,829	0	246,829	0.0000226	1,841
677	HARRIS-FT BND ESD 100	2015	2,293,783,860	0.080	1,823,788	0	1,823,788	0.0001669	13,601
678	WALLER HARRIS ESD 200	2015	989,358,344	0.100	984,412	0	984,412	0.0000901	7,341
679	HARRIS COUNTY ESD 8	2015	2,047,611,786	0.100	2,047,612	0	2,047,612	0.0001874	15,270
681	KINGSBRIDGE MUD	2015	15,756,629	0.710	111,872	0	111,872	0.0000102	834
682	KIRKMONT MUD	2015	89,826,117	0.535	480,570	0	480,570	0.0000440	3,584
683	KLEIN PUD	2015	262,649,619	0.430	1,129,393	0	1,129,393	0.0001033	8,422
684	KLEINWOOD MUD	2015	351,293,356	0.430	1,510,561	0	1,510,561	0.0001382	11,265
691	LAKE MUD	2015	308,987,405	0.620	1,915,722	0	1,915,722	0.0001753	14,286
692	LAKE FOREST UD	2015	314,017,716	0.250	785,044	0	785,044	0.0000718	5,854
693	LANGHAM CREEK UD	2015	433,090,580	0.630	2,728,471	0	2,728,471	0.0002497	20,347
694	LONGHORN TOWN UD	2015	243,493,476	0.500	1,217,467	0	1,217,467	0.0001114	9,079

ESTIMATED 2017 COST ALLOCATION TO TAXING UNITS

Jur No.	Taxing Unit	Tax Year	Taxable Value as of 10/7/2016	Tax Rate	Total Levy	Frozen Levy Loss	Adjusted Levy	Allocation Ratio	2017 Budget Allocation
695	LOUETTA NORTH PUD	2015	341,469,592	0.270	921,968	0	921,968	0.0000844	6,875
696	LOUETTA ROAD UD	2015	118,241,488	0.440	520,263	0	520,263	0.0000476	3,880
697	LUCE BAYOU PUD	2015	39,893,726	0.930	371,012	0	371,012	0.0000339	2,767
701	MALCOMSON ROAD UD	2015	696,052,886	0.440	3,062,633	0	3,062,633	0.0002802	22,839
702	MASON CREEK UD	2015	600,002,389	0.323	1,938,008	0	1,938,008	0.0001773	14,452
703	BRAZORIA COUNTY MUD 28	2015	97,135,709	0.820	796,513	0	796,513	0.0000729	5,940
704	MAYDE CREEK MUD	2015	245,267,728	0.930	2,280,990	0	2,280,990	0.0002087	17,010
705	MEMORIAL HILLS UD	2015	88,028,751	0.805	708,631	0	708,631	0.0000648	5,284
706	MEMORIAL MUD	2015	442,756,307	0.480	2,125,230	0	2,125,230	0.0001945	15,849
707	MEMORIAL VILLAGES WATER AUTHORITY	2015	5,169,846,775	0.030	1,570,289	0	1,570,289	0.0001437	11,710
709	MILLS ROAD MUD	2015	231,735,717	0.820	1,900,233	0	1,900,233	0.0001739	14,171
710	MISSION BEND MUD 1	2015	164,653,747	0.278	456,914	0	456,914	0.0000418	3,407
711	MISSION BEND MUD 2	2015	364,110,464	0.797	2,901,960	0	2,901,960	0.0002655	21,641
712	MORTON ROAD MUD	2015	156,508,287	0.690	1,079,907	0	1,079,907	0.0000988	8,053
714	MOUNT HOUSTON ROAD MUD	2015	175,727,091	1.300	2,284,452	0	2,284,452	0.0002090	17,036
718	NEWPORT MUD	2015	473,473,570	0.635	3,006,557	0	3,006,557	0.0002751	22,421
721	NORTHAMPTON MUD	2015	545,038,173	0.610	3,324,733	0	3,324,733	0.0003042	24,794
722	NORTH BELT UD	2015	333,078,264	0.500	1,665,391	0	1,665,391	0.0001524	12,419
724	NORTHEAST HARRIS CNTY MUD 1	2015	83,209,716	1.480	1,231,504	0	1,231,504	0.0001127	9,184
725	NORTH FOREST MUD	2015	67,730,917	0.718	486,308	0	486,308	0.0000445	3,627
727	NORTH MISSION GLEN MUD	2015	3,431,556	0.550	18,874	0	18,874	0.0000017	141
728	NORTH PARK PUD	2015	217,139,572	0.370	803,416	0	803,416	0.0000735	5,991
730	NORTHWEST FREEWAY MUD	2015	108,025,194	0.800	864,202	0	864,202	0.0000791	6,445
731	NORTHGATE CROSSING MUD 1	2015	130,347,761	1.130	1,472,930	0	1,472,930	0.0001348	10,984
732	NORTHGATE CROSSING MUD 2	2015	259,323,255	0.887	2,300,197	0	2,300,197	0.0002105	17,153
734	NORTHGATE CROSSING ROAD UD	2015	343,488,306	0.200	686,977	0	686,977	0.0000629	5,123
745	NORTHWEST HC MUD 5	2015	1,408,590,965	0.790	11,127,869	0	11,127,869	0.0010183	82,984
746	NORTHWEST HC MUD 6	2015	289,177,248	0.390	1,127,791	0	1,127,791	0.0001032	8,410
749	NORTHWEST HC MUD 9	2015	370,943,045	0.515	1,910,357	0	1,910,357	0.0001748	14,246
750	NORTHWEST HC MUD 10	2015	566,333,156	0.765	4,332,449	0	4,332,449	0.0003964	32,308
752	NORTHWEST HC MUD 12	2015	110,699,095	0.980	1,084,851	0	1,084,851	0.0000993	8,090
755	NORTHWEST HC MUD 15	2015	376,677,235	0.650	2,448,402	0	2,448,402	0.0002240	18,259
756	NORTHWEST HC MUD 16	2015	144,539,097	1.160	1,676,654	0	1,676,654	0.0001534	12,503
759	NORTHWEST HC MUD 19	2015	517,843,796	0.880	4,557,025	0	4,557,025	0.0004170	33,983
760	NORTHWEST HC MUD 20	2015	220,663,991	0.250	551,660	0	551,660	0.0000505	4,114
761	NORTHWEST HC MUD 21	2015	127,016,555	0.240	304,840	0	304,840	0.0000279	2,273
762	NORTHWEST HC MUD 22	2015	158,163,414	0.845	1,336,481	0	1,336,481	0.0001223	9,967
763	NORTHWEST HC MUD 23	2015	122,921,928	0.840	1,032,544	0	1,032,544	0.0000945	7,700
764	NORTHWEST HC MUD 24	2015	587,016,547	0.700	4,109,116	0	4,109,116	0.0003760	30,643
768	NORTHWEST HC MUD 28	2015	112,673,197	0.680	766,178	0	766,178	0.0000701	5,714
769	NORTHWEST HC MUD 29	2015	346,152,346	0.350	1,211,533	0	1,211,533	0.0001109	9,035

ESTIMATED 2017 COST ALLOCATION TO TAXING UNITS

Jur No.	Taxing Unit	Tax Year	Taxable Value as of 10/7/2016	Tax Rate	Total Levy	Frozen Levy Loss	Adjusted Levy	Allocation Ratio	2017 Budget Allocation
770	NORTHWEST HC MUD 30	2015	324,477,166	0.720	2,336,236	0	2,336,236	0.0002138	17,422
771	NORTHWEST HC MUD 32	2015	381,888,982	0.720	2,749,601	0	2,749,601	0.0002516	20,505
776	NORTHWEST HC MUD 36	2015	209,799,339	0.810	1,699,375	0	1,699,375	0.0001555	12,673
777	NW PARK CONSOLIDATED MUD	2015	681,502,727	0.450	3,066,762	0	3,066,762	0.0002806	22,870
778	NOTTINGHAM COUNTRY MUD	2015	972,132,586	0.345	3,353,857	0	3,353,857	0.0003069	25,011
779	NORTHWOOD MUD 1	2015	49,106,205	1.250	613,828	0	613,828	0.0000562	4,578
781	OAKMONT PUBLIC UTILITY DISTRICT	2015	454,385,960	1.000	4,543,860	0	4,543,860	0.0004158	33,885
783	PARKWAY UD	2015	280,617,528	0.820	2,301,064	0	2,301,064	0.0002106	17,160
786	RANKIN ROAD WEST MUD	2015	94,325,365	1.130	1,065,877	0	1,065,877	0.0000975	7,949
787	PINE VILLAGE PUD	2015	33,438,268	1.610	538,356	0	538,356	0.0000493	4,015
788	PONDEROSA FOREST UD	2015	299,468,135	0.100	299,468	0	299,468	0.0000274	2,233
789	POSTWOOD MUD	2015	113,025,158	0.430	486,008	0	486,008	0.0000445	3,624
790	PRESTONWOOD FOREST MUD	2015	215,437,931	0.350	754,033	0	754,033	0.0000690	5,623
801	REID ROAD MUD 1	2015	255,185,919	0.514	1,310,635	0	1,310,635	0.0001199	9,774
802	REID ROAD MUD 2	2015	474,429,138	0.370	1,755,388	0	1,755,388	0.0001606	13,091
803	RENN ROAD MUD	2015	120,498,010	0.750	903,735	0	903,735	0.0000827	6,739
804	RICEWOOD MUD	2015	339,700,722	0.475	1,613,578	0	1,613,578	0.0001477	12,033
806	ROLLING CREEK UD	2015	234,851,039	0.850	1,996,234	0	1,996,234	0.0001827	14,887
807	ROLLING FORK PUD	2015	136,971,875	0.390	534,190	0	534,190	0.0000489	3,984
809	ROYALWOOD MUD	2015	33,269,846	0.492	163,688	0	163,688	0.0000150	1,221
810	RICHEY ROAD MUD	2015	300,706,934	0.230	691,626	0	691,626	0.0000633	5,158
811	REMINGTON MUD 1	2015	1,037,225,620	0.520	5,393,573	0	5,393,573	0.0004935	40,222
822	SAGEMEADOW UD	2015	254,687,090	0.500	1,273,435	0	1,273,435	0.0001165	9,496
823	SEQUOIA UD	2015	67,701,278	0.470	318,196	0	318,196	0.0000291	2,373
824	SHASLA PUD	2015	83,346,187	1.010	841,796	0	841,796	0.0000770	6,278
825	SW HARRIS COUNTY MUD 1	2015	58,778,130	0.680	399,691	0	399,691	0.0000366	2,981
826	SPANISH COVE PUD	2015	21,810,802	0.700	152,676	0	152,676	0.0000140	1,139
827	SPENCER ROAD PUD	2015	348,415,611	0.380	1,323,979	0	1,323,979	0.0001212	9,873
829	SPRING CREEK FOREST PUD	2015	191,891,268	0.465	892,294	0	892,294	0.0000816	6,654
831	SPRING MEADOWS MUD	2015	213,601,429	1.020	2,178,735	0	2,178,735	0.0001994	16,248
832	SPRING WEST MUD	2015	236,802,905	0.820	1,941,784	0	1,941,784	0.0001777	14,481
833	SHELDON ROAD MUD	2015	69,254,662	1.341	928,816	0	928,816	0.0000850	6,926
841	TATTOR ROAD MUD	2015	176,446,421	0.640	1,129,257	0	1,129,257	0.0001033	8,421
842	TERRANOVA WEST MUD	2015	230,327,878	0.650	1,497,131	0	1,497,131	0.0001370	11,165
844	HARRIS COUNTY MUD 368	2015	643,450,001	0.790	5,083,255	0	5,083,255	0.0004651	37,907
846	TIMBERLAKE ID	2015	143,085,755	0.490	701,120	0	701,120	0.0000642	5,228
847	TIMBER LANE UD	2015	644,317,214	0.950	6,121,014	0	6,121,014	0.0005601	45,646
848	TRAIL OF THE LAKES MUD	2015	431,052,316	0.700	3,017,366	0	3,017,366	0.0002761	22,501
850	HARRIS COUNTY ID 3	2015	2,864,668,172	0.150	4,297,002	0	4,297,002	0.0003932	32,044
851	WESTADOR MUD	2015	267,864,398	0.170	455,369	0	455,369	0.0000417	3,396
861	WEST HARRIS COUNTY MUD 1	2015	370,855,750	0.280	1,038,396	0	1,038,396	0.0000950	7,744

ESTIMATED 2017 COST ALLOCATION TO TAXING UNITS

Jur No.	Taxing Unit	Tax Year	Taxable Value as of 10/7/2016	Tax Rate	Total Levy	Frozen Levy Loss	Adjusted Levy	Allocation Ratio	2017 Budget Allocation
862	WEST HARRIS COUNTY MUD 2	2015	206,383,907	0.480	990,643	0	990,643	0.0000906	7,388
864	WEST HARRIS COUNTY MUD 4	2015	77,010,868	1.080	831,717	0	831,717	0.0000761	6,202
865	WEST HARRIS COUNTY MUD 5	2015	105,837,063	1.090	1,153,624	0	1,153,624	0.0001056	8,603
866	WEST HARRIS COUNTY MUD 6	2015	159,468,131	0.400	637,873	0	637,873	0.0000584	4,757
867	WEST HARRIS COUNTY MUD 7	2015	226,137,040	0.840	1,899,551	0	1,899,551	0.0001738	14,166
869	WEST HARRIS COUNTY MUD 9	2015	277,294,416	0.470	1,303,284	0	1,303,284	0.0001193	9,719
870	WEST HARRIS COUNTY MUD 10	2015	372,606,207	0.710	2,645,504	0	2,645,504	0.0002421	19,728
871	WEST HARRIS COUNTY MUD 11	2015	973,488,656	0.500	4,867,443	0	4,867,443	0.0004454	36,298
874	WEST HARRIS COUNTY MUD 14	2015	195,379,283	0.580	1,133,200	0	1,133,200	0.0001037	8,451
875	WEST HARRIS COUNTY MUD 15	2015	357,504,099	0.250	893,760	0	893,760	0.0000818	6,665
876	WEST HARRIS COUNTY MUD 16	2015	30,883,101	0.500	154,416	0	154,416	0.0000141	1,152
877	WEST HARRIS COUNTY MUD 17	2015	111,249,208	1.190	1,323,866	0	1,323,866	0.0001211	9,873
879	WEST HARRIS COUNTY MUD 21	2015	415,232,564	0.850	3,529,477	0	3,529,477	0.0003230	26,320
893	WEST KEEGANS BAYOU ID	2015	141,024,567	0.095	133,973	0	133,973	0.0000123	999
894	WESTLAKE MUD 1	2015	181,372,357	0.563	1,020,220	0	1,020,220	0.0000934	7,608
895	WEST MEMORIAL MUD	2015	268,907,070	0.430	1,156,300	0	1,156,300	0.0001058	8,623
896	WESTON MUD	2015	702,989,063	0.480	3,374,348	0	3,374,348	0.0003088	25,164
897	WESTPARK MUD	2015	344,655,663	0.650	2,240,262	0	2,240,262	0.0002050	16,706
899	WHITE OAK BEND MUD	2015	69,031,549	0.940	648,897	0	648,897	0.0000594	4,839
901	WINDFERN FOREST UD	2015	345,477,869	0.500	1,727,389	0	1,727,389	0.0001581	12,882
902	WOODCREEK MUD	2015	167,338,625	0.560	937,096	0	937,096	0.0000857	6,988
907	NORTHPOINTE WCID	2015	996,599,926	0.350	3,488,100	0	3,488,100	0.0003192	26,012
910	KATY MANAGEMENT DISTRICT 1	2015	94,623,581	0.820	775,913	0	775,913	0.0000710	5,786
911	CINCO MUD 3	2015	28,081,006	0.400	112,324	0	112,324	0.0000103	838
913	CINCO MUD 6	2015	118,993,984	0.355	422,429	0	422,429	0.0000387	3,150
914	CINCO MUD 9	2015	158,409,832	0.430	681,162	0	681,162	0.0000623	5,080
915	HARRIS-FT BND CNTIES MUD 5	2015	10,674,922	0.590	62,982	0	62,982	0.0000058	470
916	FORT BEND WCID 2	2015	39,819,680	0.180	71,675	0	71,675	0.0000066	535
917	WILLOW FORK DRAINAGE DISTRICT	2015	304,682,413	0.185	563,662	0	563,662	0.0000516	4,203
516			<u>\$3,430,410,715,245</u>		<u>\$11,052,599,512</u>	<u>\$124,261,658</u>	<u>\$10,928,337,854</u>	<u>1.0000000</u>	<u>\$81,496,171</u>