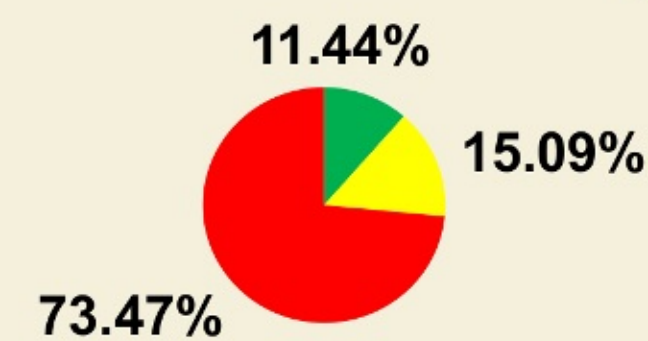
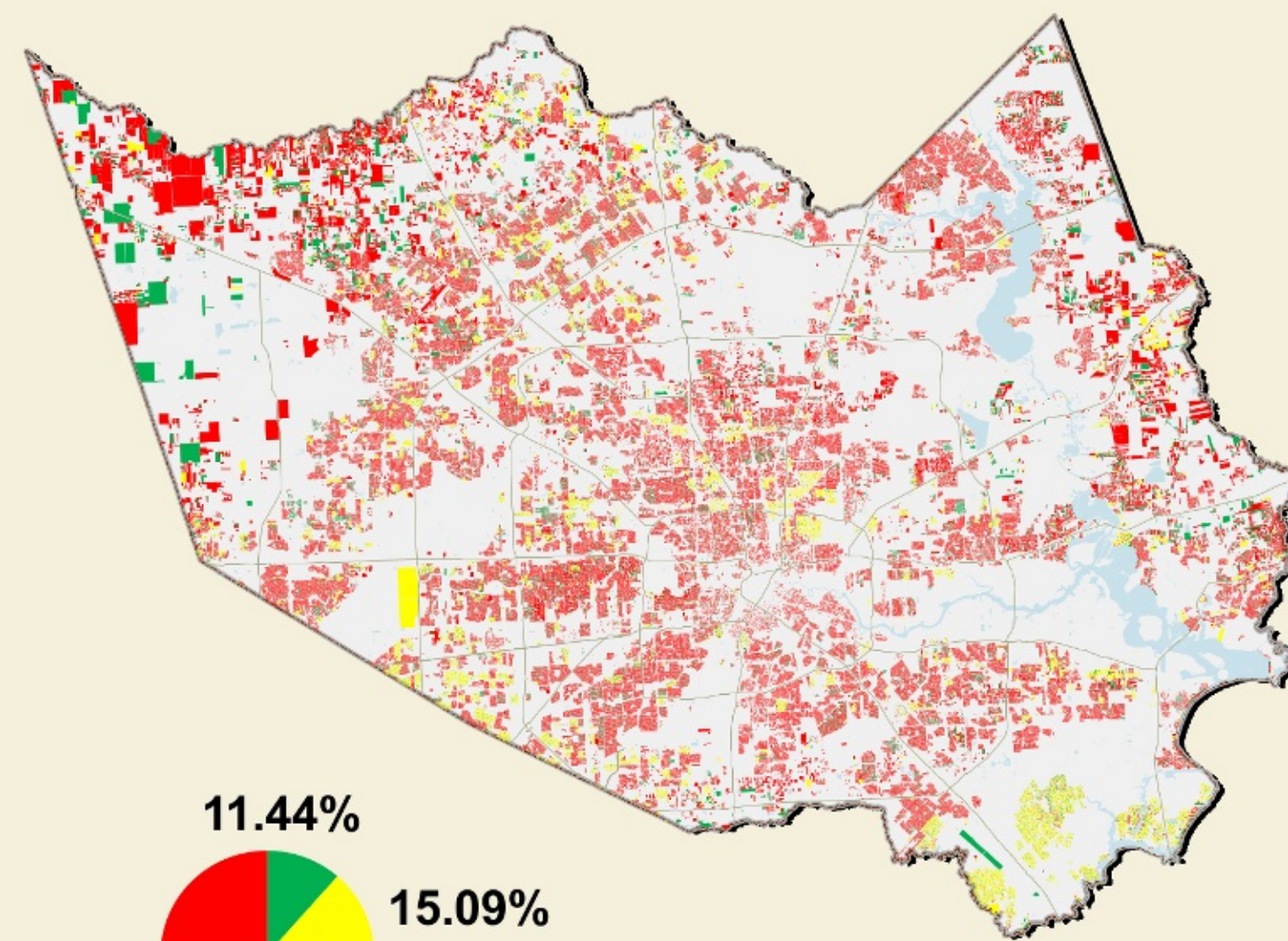
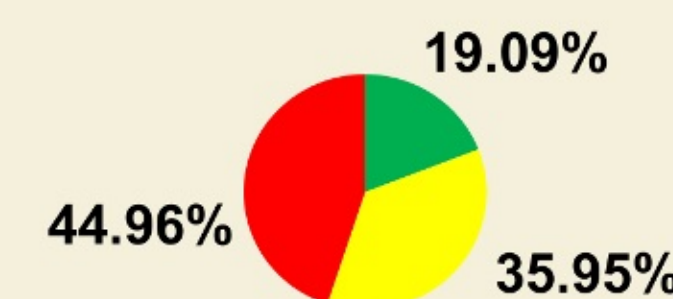
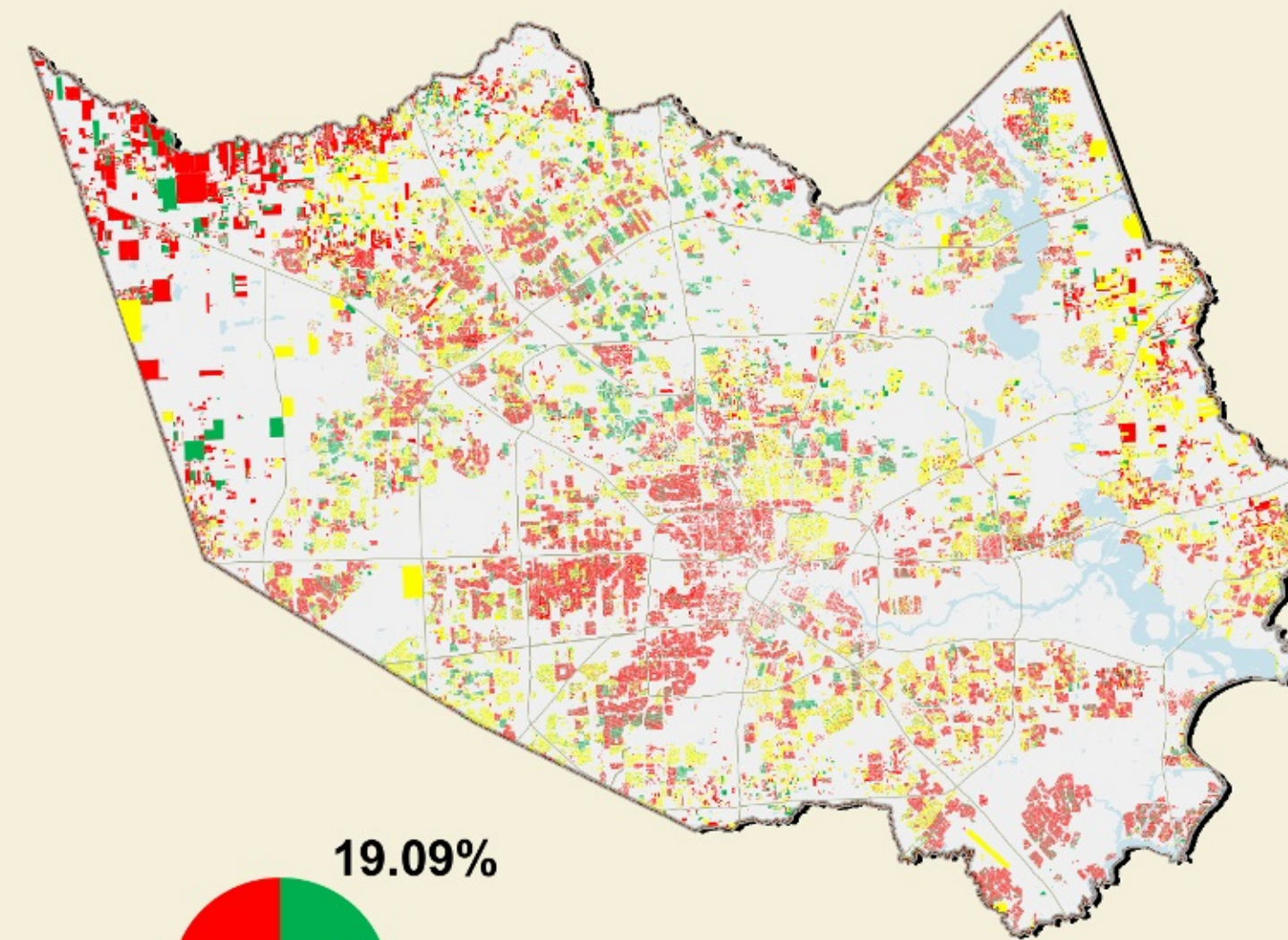


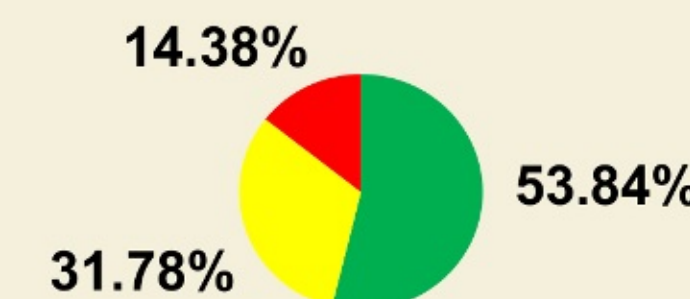
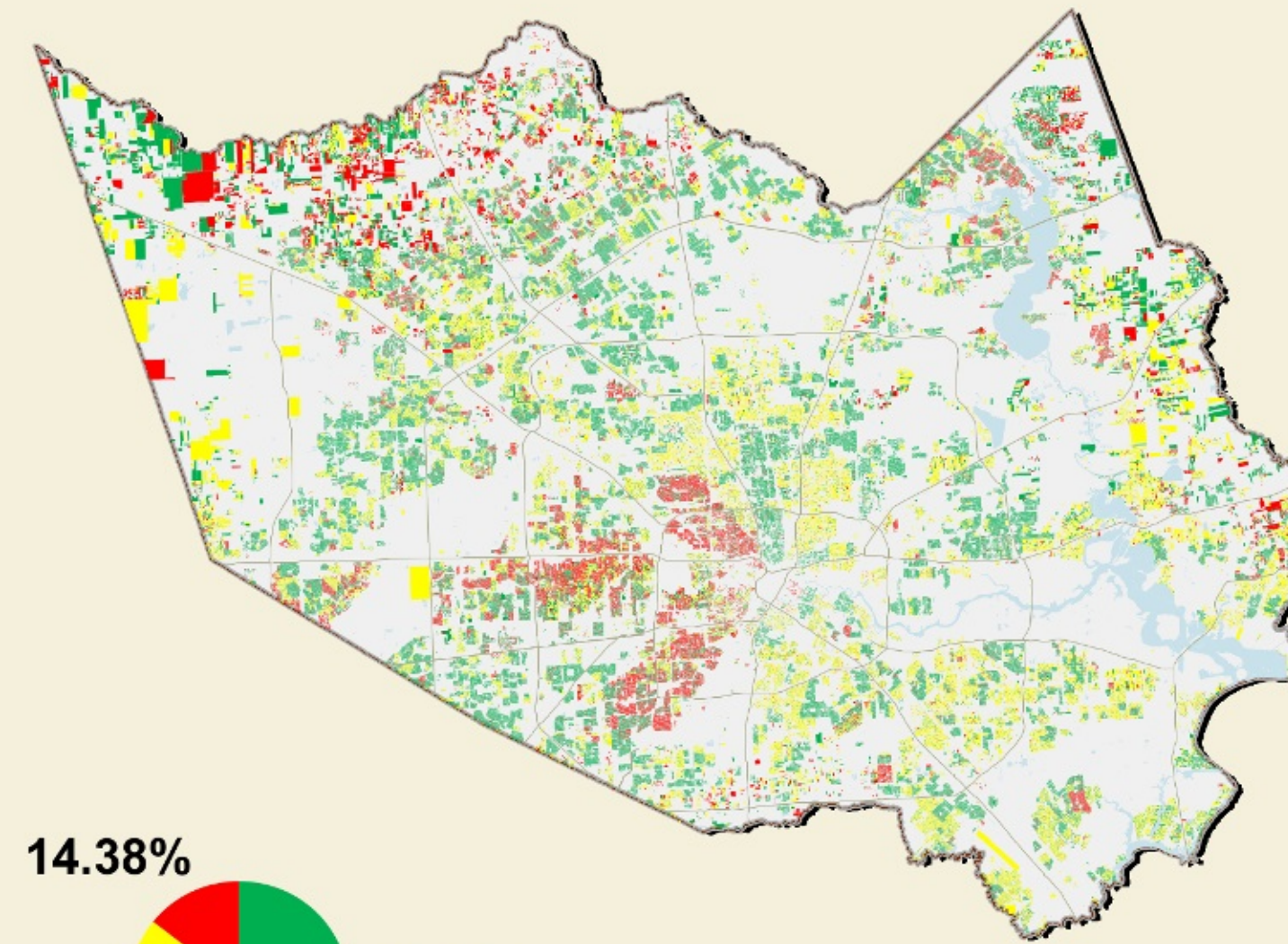
2007



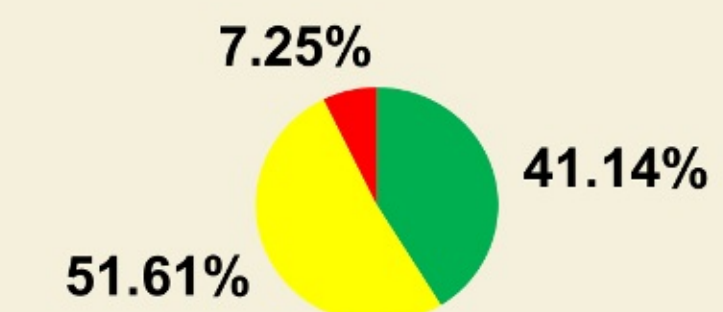
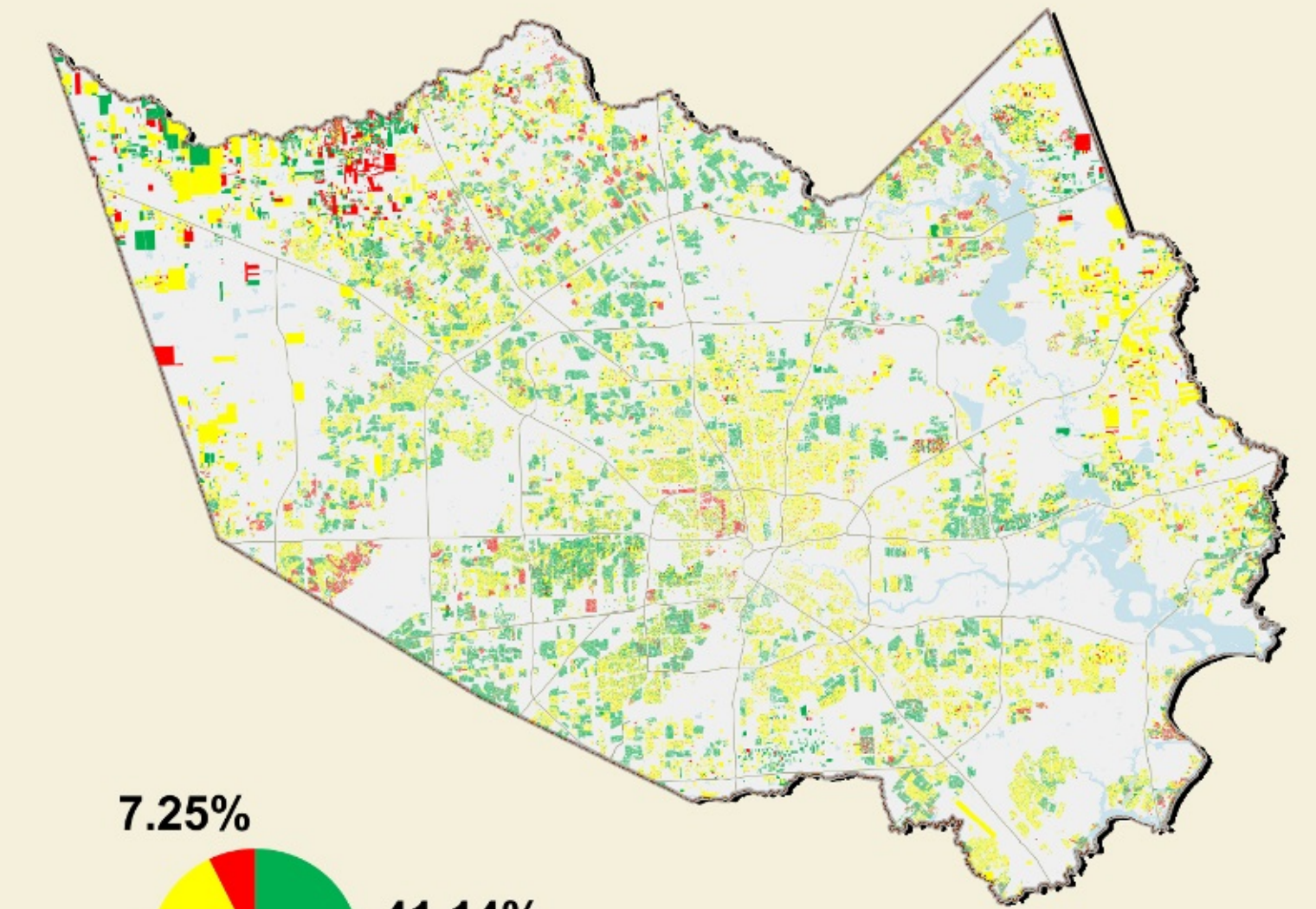
2008



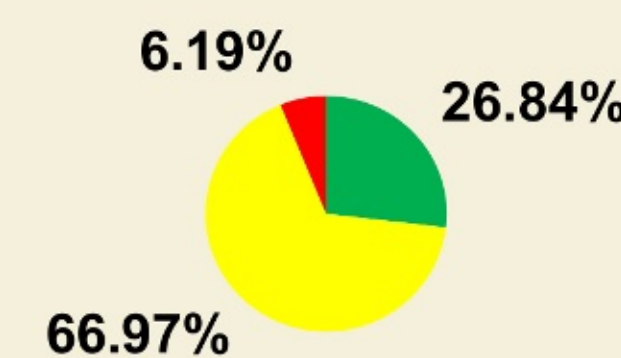
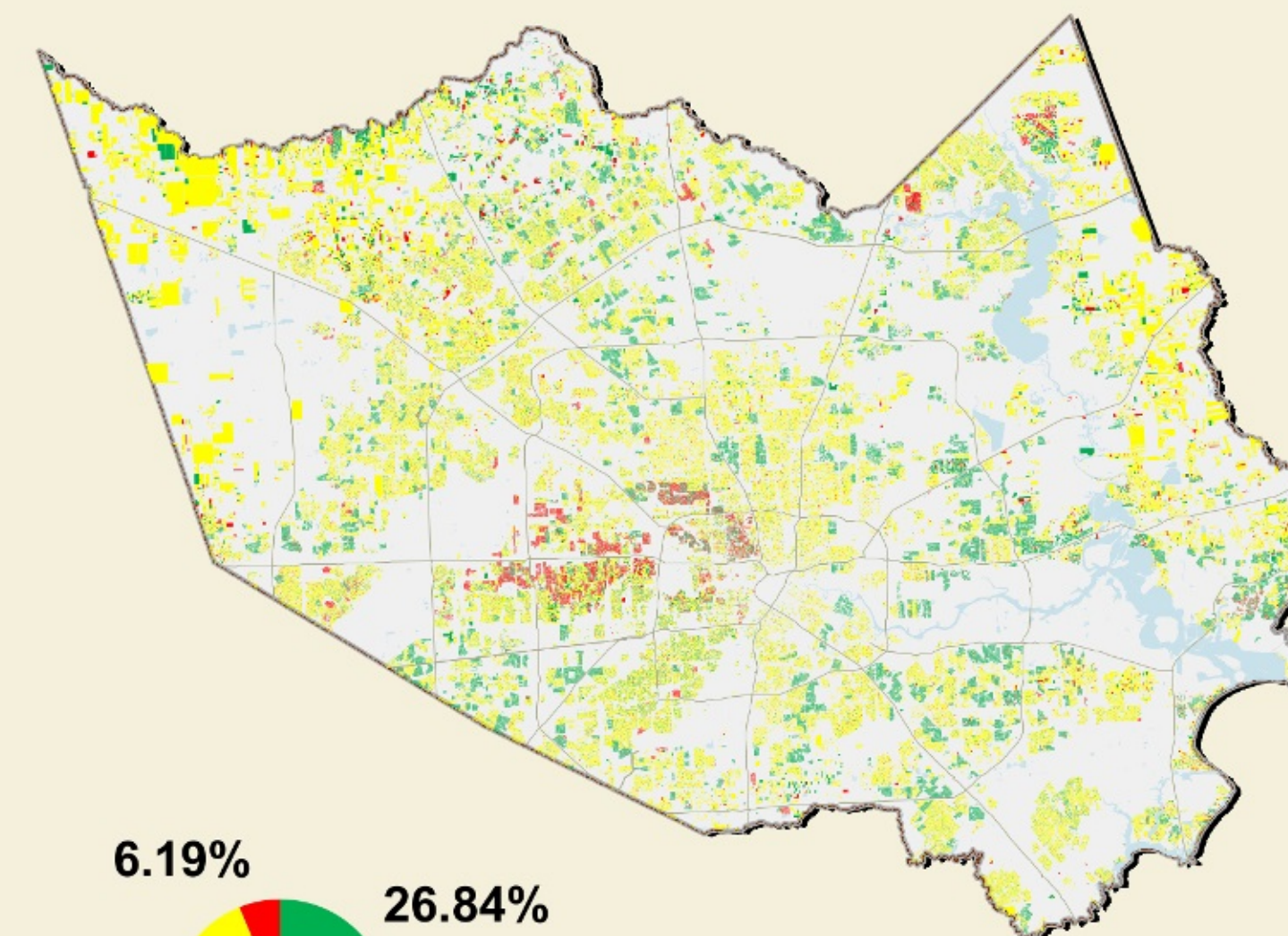
2009



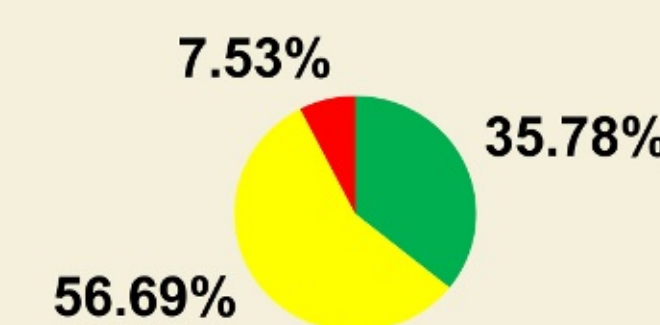
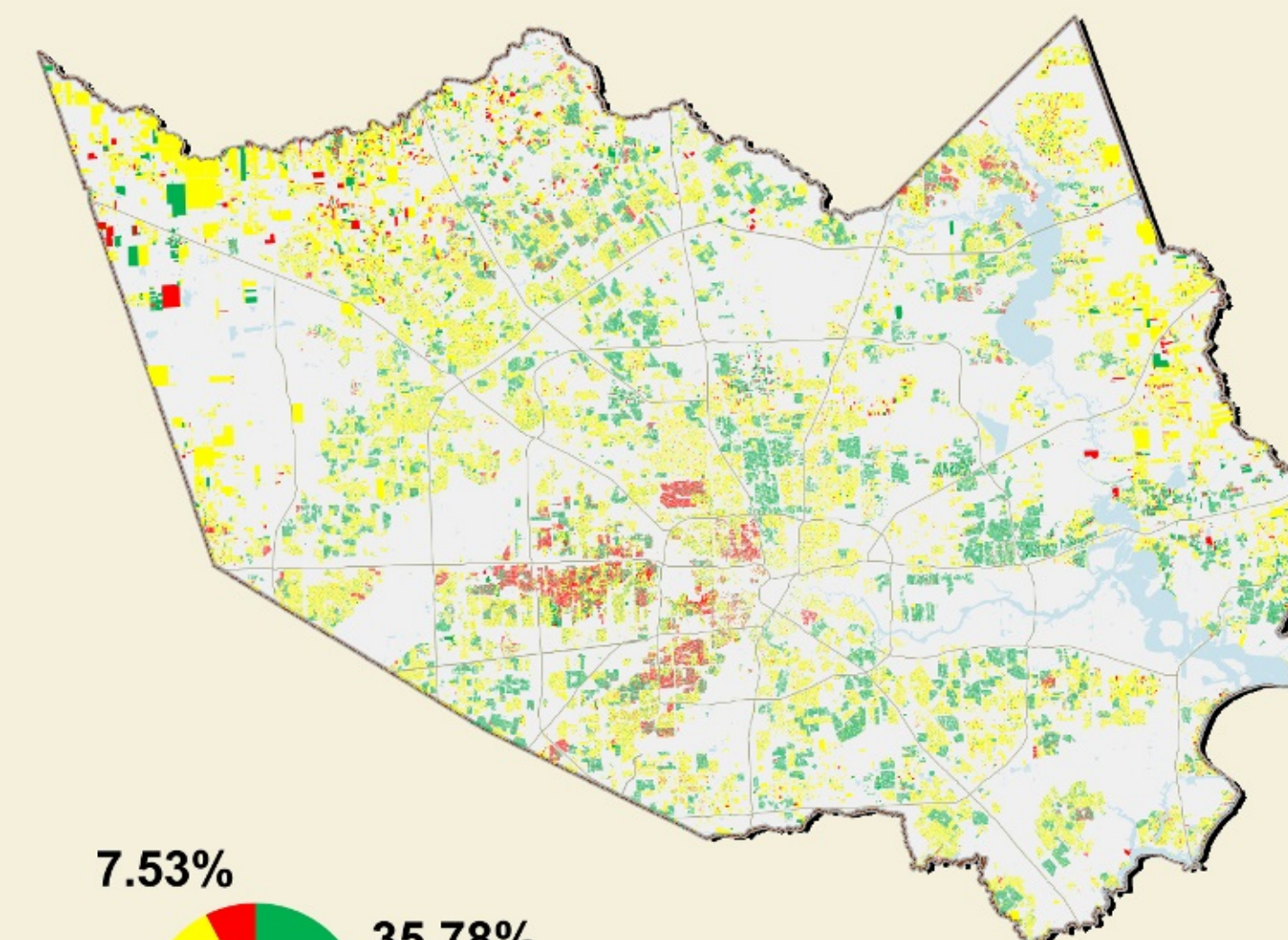
2010



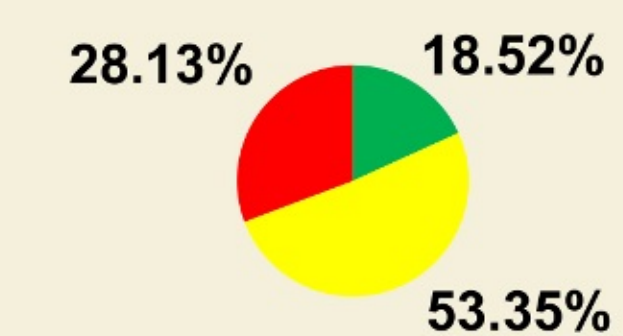
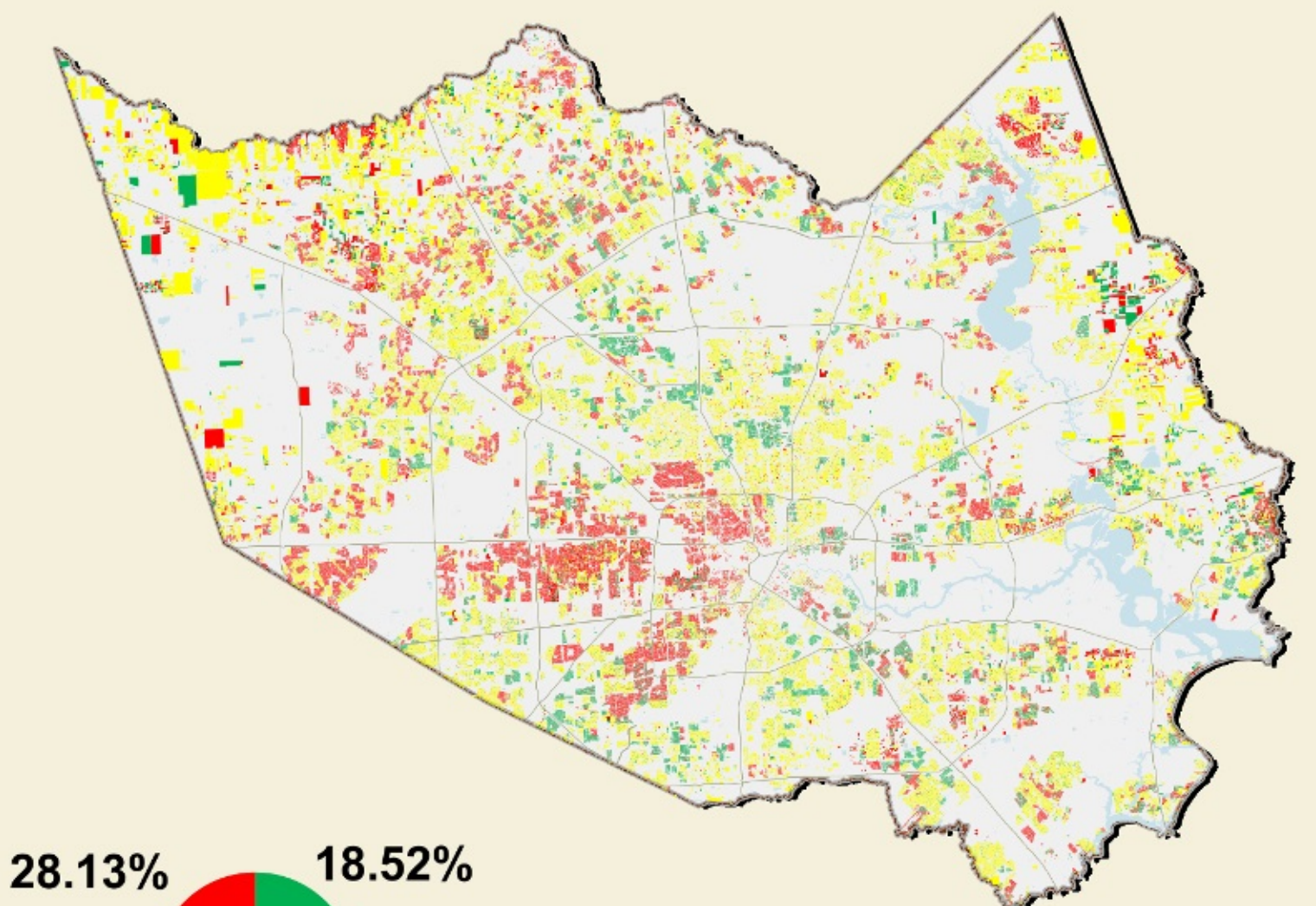
2011



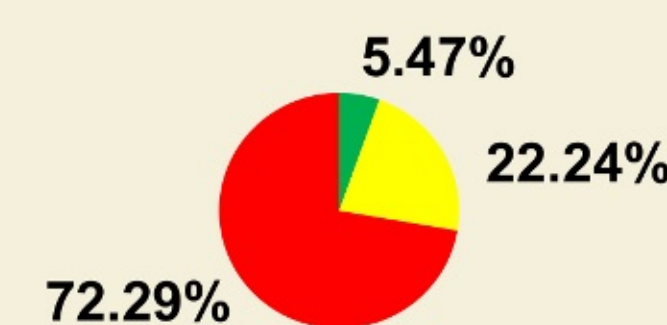
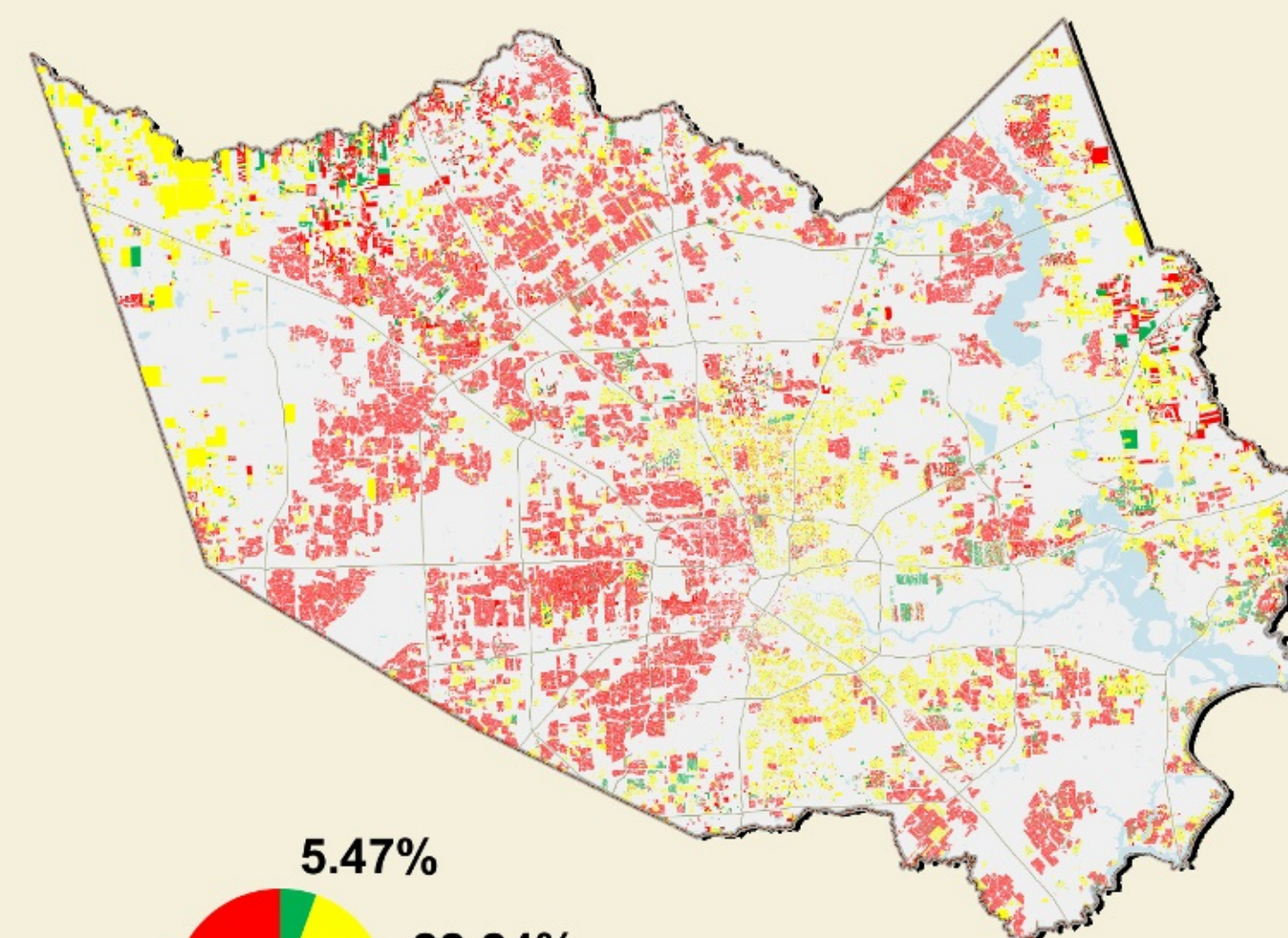
2012



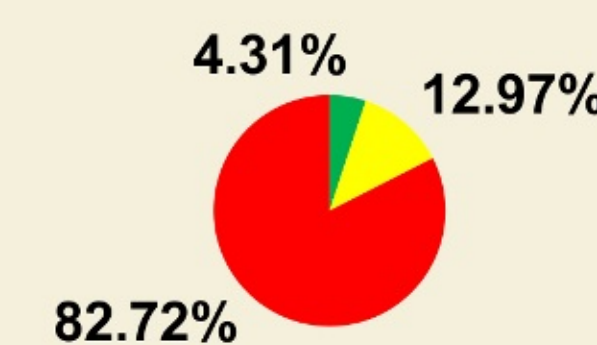
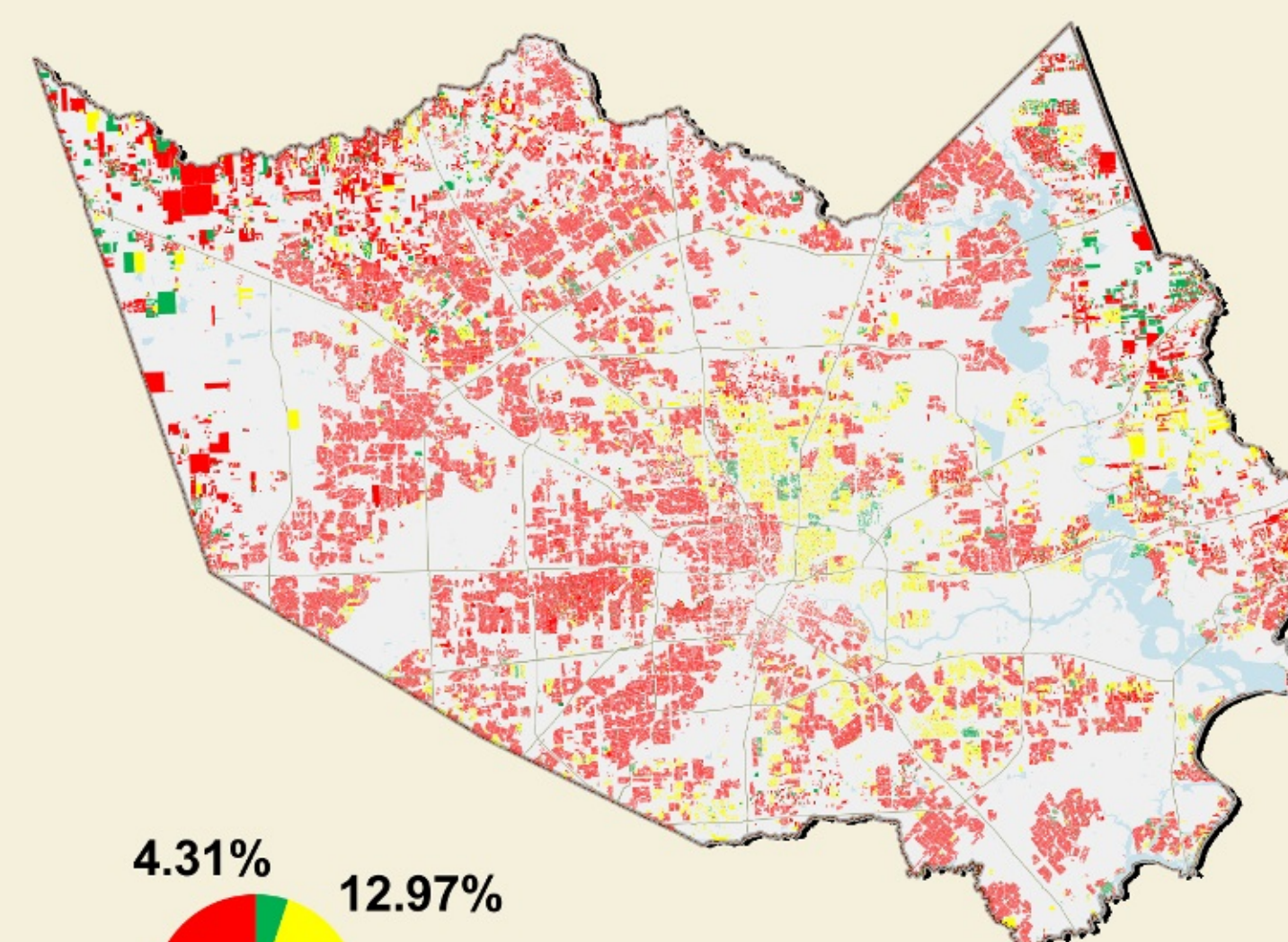
2013



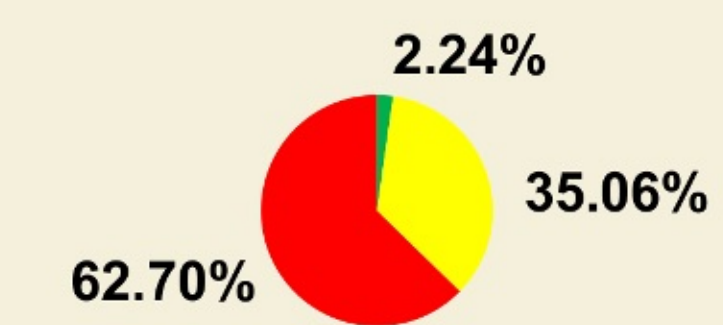
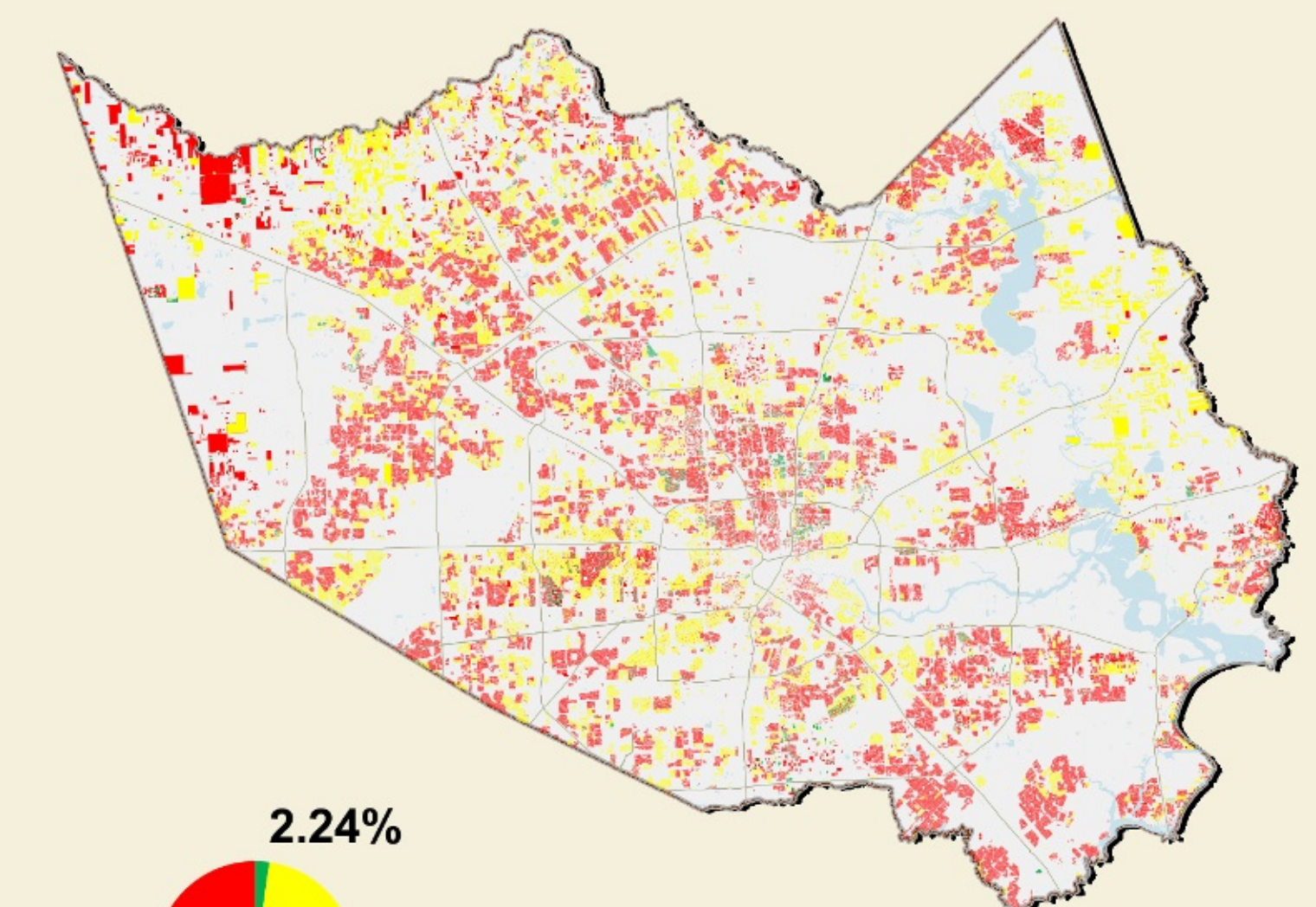
2014



2015



2016



Residential Properties From 2007 to 2016

10 Years Study of Market Value Changes
In Harris County



GIS User: tnguyen
Data Provider: A.O.D.
HARRIS COUNTY APPRAISAL DISTRICT
13013 Northwest Fwy
Houston, TX 77040-6305

Scale: Not To Scale / Plot Date: 4/6/2016
Residential Market Values
(A1 & A2)

Data as of April 5, 2016
2007 to 2015 Certified Market Values
2016 Noticed Values Subject to Change

Legend

- Decrease
- No Change
- Increase
- County
- Water
- Highway

Geospatial or map data maintained by the Harris County Appraisal District is for informational purposes and may **not** have been prepared for or be suitable for legal, engineering, or surveying purposes. It does **not** represent an on-the-ground survey and only represents the approximate location of property boundaries.